

### S U M M A R Y

(Amount in million)

<b>Table 1: Key Indicators of Export Receipts</b>	<b>Pak. Rs.</b>	<b>US \$</b>
May 2005	66,867	1,124
April 2005	73,077	1,230
%Change during May 2005 over April 2005	-8.5	-8.6
May 2004	55,895	969
%Change during May 2005 over May 2004	19.6	16.0
July 2004 – May 2005	754,657	12,719
July 2003 – May 2004	625,678	10,873
%Change during July 2004 – May 2005 over July 2003 – May 2004	20.6	17.0
Monthly average during July 2004 – May 2005	68,605	1,156
Monthly average during July 2003 – May 2004	56,880	988
FY04	691,827	12,015
FY03	628,655	10,750
%Change during FY04 over FY03	10.0	11.8
Monthly average during FY04	57,652	1,001
Monthly average during FY03	52,388	896

**Figure 1: Export Receipts**

**Period:** July - May

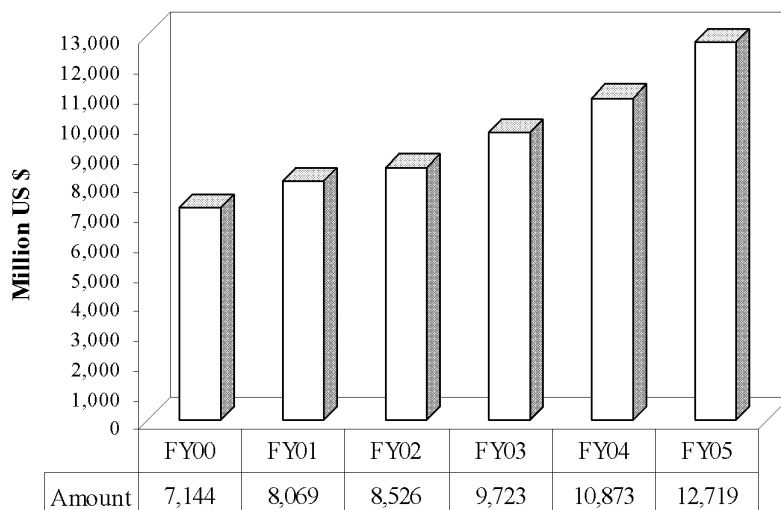


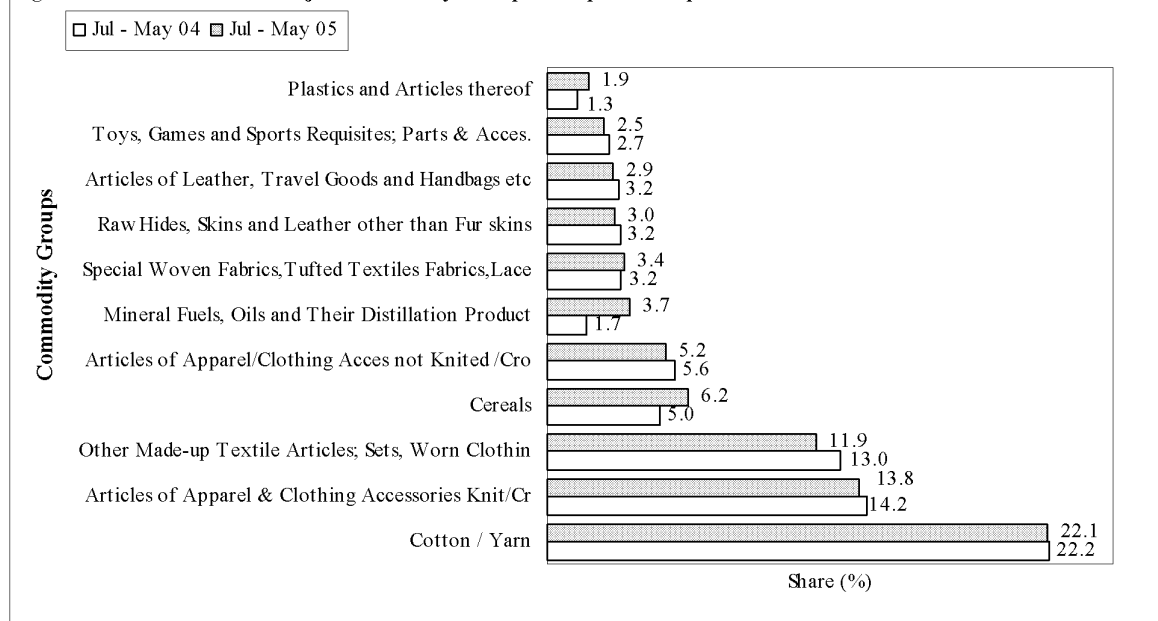
Table 2: Export Receipts by Major Commodity Groups

(Amount in million)

Commodity	May			July- May		
	2005	2005	2004	2004-2005	2003-2004	%
	Pak Rs.	US \$				Change
Cotton / Yarn	14,488	243	229	2,815	2,411	16.7
Articles of Apparel & Clothing Acc Kn/Cr	8,517	143	136	1,751	1,539	13.8
Other Made-up Tex Articles; Sets, Worn Clothing	7,876	132	120	1,512	1,412	7.1
Cereals	5,829	98	44	793	542	46.4
Articles of Apparel/Clothing Acc not Kn/Cr	3,360	56	44	666	612	8.8
Mineral Fuels, Oils & Their Distillation Product	2,426	41	31	465	189	146.3
Special Woven Fab, Tufted Tex Fab, Lace	2,260	38	33	428	348	22.9
Raw Hides, Skins & Leather other than Fur skins	1,929	32	33	381	352	8.2
Articles of Leather, Travel Goods & Handbags	1,904	32	30	373	347	7.3
Toys, Games and Sports Requisites; Parts & Acc.	1,730	29	31	316	299	5.8
Plastics and Articles thereof	1,552	26	14	236	144	63.8
Carpets and other Textile Floor Coverings	1,278	21	21	252	211	19.7
Optical, Photographic, Measuring & Medical Inst.	918	15	14	169	156	8.3
Man-Made Filaments	840	14	25	226	260	-13.0
Man-Made Staple Fibers	778	13	15	220	194	13.3
Organic Chemicals	761	13	1	64	36	76.4
Fish and Crustaceans	695	12	10	124	117	5.7
Tanning or Dyeing Extracts	606	10	1	72	9	744.9
All Others	9,119	153	136	1,857	1,696	9.5
<b>Total</b>	<b>66,867</b>	<b>1,124</b>	<b>969</b>	<b>12,719</b>	<b>10,873</b>	<b>17.0</b>

Kn: Knitted, Cr: Crocheted, Acc: Accessories, Tex: Textile, Fab: Fabrics

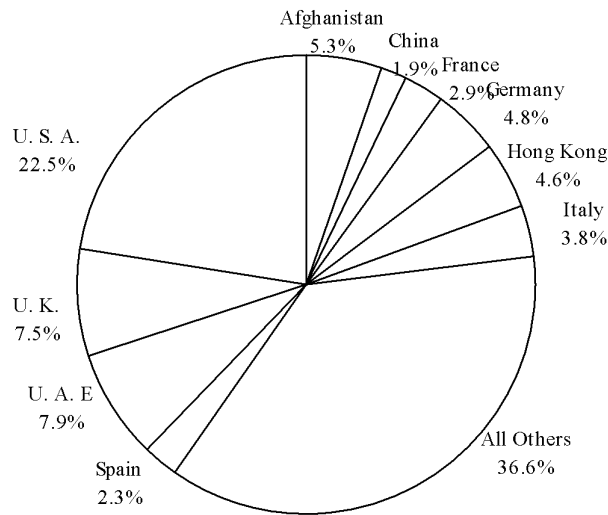
Figure 2: Percent Share of Major Commodity Groups in Export Receipts

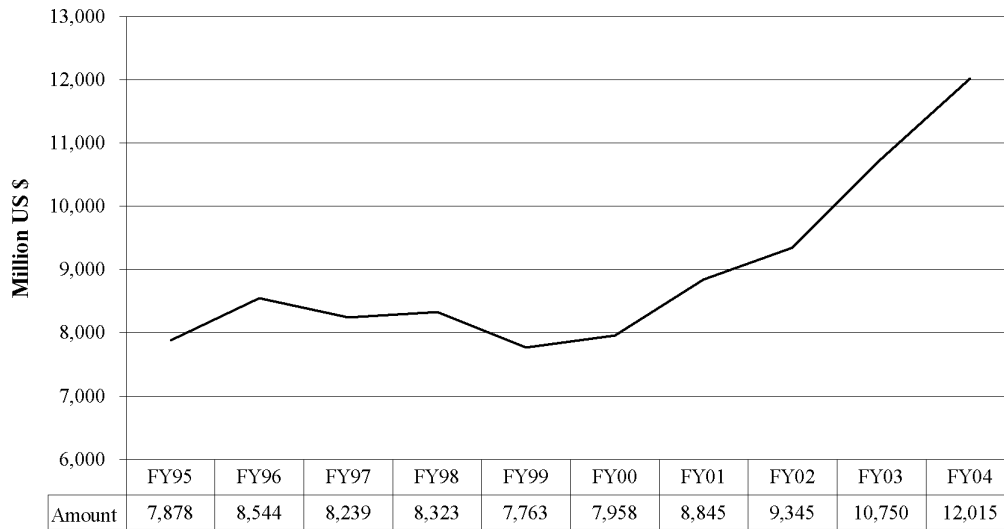
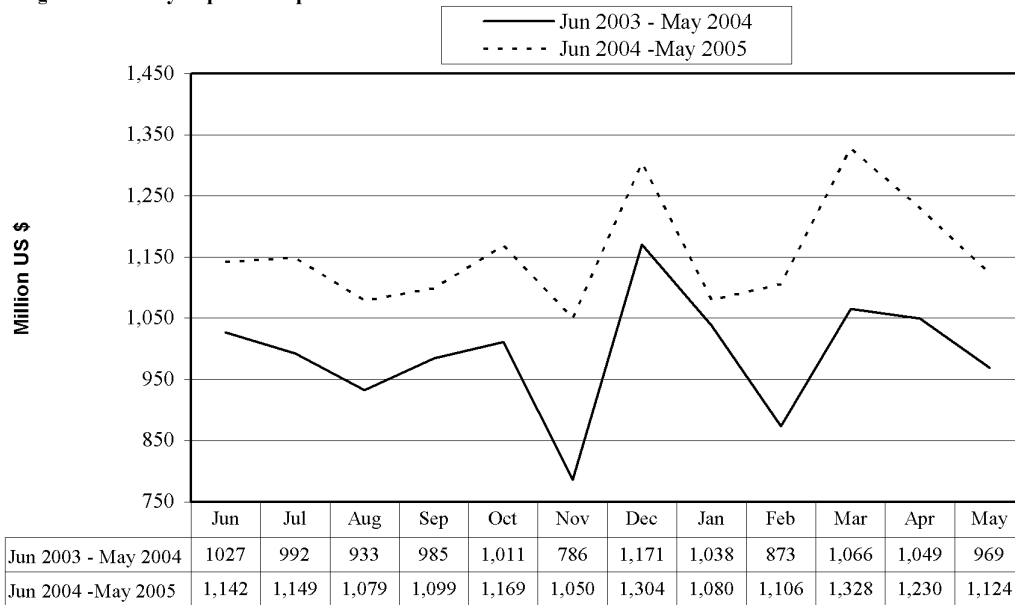


**Table 3: Export Receipts by Major Countries** (Amount in million)

Country	May			July - May		
	2005	2005	2004	2004-2005	2003-2004	% Change
	Pak Rs			US S		
U. S. A.	15,476	260	231	2,856	2,488	14.8
Afghanistan	4,900	82	42	668	361	85.0
U. K.	4,194	70	75	954	798	19.6
U. A. E	4,122	69	61	1,006	1,003	0.3
Italy	2,962	50	39	484	385	25.8
Germany	2,862	48	52	606	579	4.6
Hong Kong	2,498	42	56	581	574	1.3
China	1,898	32	24	247	225	9.5
France	1,582	27	25	363	313	16.3
Spain	1,470	25	25	297	261	14.0
Saudi Arabia	1,408	24	16	320	339	-5.3
Turkey	1,337	22	15	204	185	10.0
Belgium	1,311	22	20	266	221	20.4
South Korea	1,308	22	14	187	198	-5.5
Netherlands	1,210	20	20	258	250	2.9
All Others	18,330	308	255	3,422	2,694	27.0
<b>Total</b>	<b>66,867</b>	<b>1,124</b>	<b>969</b>	<b>12,719</b>	<b>10,873</b>	<b>17.0</b>

**Figure 3: % Share of Major Countries in Export Receipts**  
 Period: July 2004- May 2005



**Figure 4: Yearly Export Receipts****Figure 5: Monthly Export Receipts**

**Table 4: Export Receipts Series** (Million Rs)

Period	1995-96	1996-97	1997-98	1998-99	1999-00	2000-01	2001-02	2002-03	2003-04	2004-05
Annual	287,181.1	321,610.8	359,261.5	389,019.2	412,082.1	517,495.6	573,987.2	628,655.3	691,827.5	
Growth (%)	18.1	12.0	11.7	8.3	5.9	25.6	10.9	9.5	10.0	
<b>Quarter-wise</b>										
Quarter-I	63,324.7 (22.1)	70,512.1 (21.9)	85,907.9 (23.9)	92,523.2 (23.8)	92,763.8 (22.5)	118,869.7 (23.0)	144,370.5 (25.2)	157,696.1 (25.1)	168,165.9 (24.3)	195,257.1
Quarter-II	70,934.6 (24.7)	81,271.5 (25.3)	91,938.5 (25.6)	94,906.2 (24.4)	98,966.7 (24.0)	119,704.7 (23.1)	150,425.4 (26.2)	147,405.4 (23.4)	170,451.2 (24.6)	210,762.3
Quarter-III	77,922.1 (27.1)	83,132.8 (25.8)	91,762.1 (25.5)	101,948.1 (26.2)	109,361.2 (26.5)	136,849.1 (26.4)	137,656.1 (24.0)	152,416.7 (24.2)	170,881.2 (24.7)	208,694.2
Quarter-IV	74,999.8 (26.1)	86,694.2 (27.0)	89,653.0 (25.0)	99,641.7 (25.6)	110,990.4 (26.9)	142,072.1 (27.5)	141,535.2 (24.7)	171,137.2 (27.2)	182,329.2 (26.4)	
<b>Month-wise</b>										
July	21,907.2 (7.6)	23,884.4 (7.4)	29,859.6 (8.3)	30,114.1 (7.7)	32,118.9 (7.8)	36,566.6 (7.1)	46,206.5 (8.1)	54,731.1 (8.7)	57,308.1 (8.3)	66,983.6
August	22,441.0 (7.8)	22,410.5 (7.0)	28,053.3 (7.8)	30,789.3 (7.9)	28,909.1 (7.0)	41,241.3 (8.0)	51,444.5 (9.0)	52,468.8 (8.3)	53,894.1 (7.8)	63,440.2
September	18,976.5 (6.6)	24,217.2 (7.5)	27,995.0 (7.8)	31,619.8 (8.1)	31,735.8 (7.7)	41,061.8 (7.9)	46,719.5 (8.1)	50,496.2 (8.0)	56,963.7 (8.2)	64,833.3
October	22,347.2 (7.8)	27,890.8 (8.7)	33,014.4 (9.2)	32,445.0 (8.3)	31,735.8 (7.7)	39,986.2 (7.7)	57,750.7 (10.1)	50,772.7 (8.1)	58,193.6 (8.4)	70,199.6
November	23,749.5 (8.3)	25,545.2 (7.9)	28,551.8 (7.9)	30,154.9 (7.8)	31,941.1 (7.8)	38,842.6 (7.5)	48,957.5 (8.5)	49,925.9 (7.9)	45,059.3 (6.5)	62,910.2
December	24,837.9 (8.6)	28,135.5 (8.7)	30,372.3 (8.5)	32,306.2 (8.3)	35,289.7 (8.6)	40,875.9 (7.9)	43,717.3 (7.6)	46,706.8 (7.4)	67,198.3 (9.7)	77,652.5
January	27,000.0 (9.4)	25,433.7 (7.9)	28,095.3 (7.8)	33,520.1 (8.6)	35,796.5 (8.7)	48,728.2 (9.4)	47,703 (8.3)	54,668.6 (8.7)	59,554.7 (8.6)	64,194.9
February	23,466.1 (8.2)	26,727.5 (8.3)	31,554.7 (8.8)	33,477.2 (8.6)	34,895.6 (8.5)	41,297.8 (8.0)	44,534.4 (7.8)	46,788.2 (7.4)	50,093.8 (7.2)	65,651.6
March	27,456.0 (9.6)	30,971.6 (9.6)	32,112.1 (8.9)	34,950.8 (9.0)	38,669.1 (9.4)	46,823.1 (9.0)	45,418.7 (7.9)	50,959.9 (8.1)	61,232.8 (8.9)	78,847.8
April	24,201.8 (8.4)	29,725.5 (9.2)	31,557.4 (8.8)	36,146.0 (9.3)	33,202.6 (8.1)	44,794.7 (8.7)	45,944.7 (8.0)	53,358.9 (8.5)	60,284.2 (8.7)	73,076.6
May	25,337.6 (8.8)	28,658.7 (8.9)	28,788.7 (8.0)	31,055.4 (8.0)	35,401.3 (8.6)	48,124.0 (9.3)	46,348 (8.1)	58,454.1 (9.3)	55,895.0 (8.1)	66,867.2
June	25,460.4 (8.9)	28,310.0 (8.8)	29,306.9 (8.2)	32,440.3 (8.3)	42,386.5 (10.3)	49,153.3 (9.5)	49,242.5 (8.6)	59,324.1 (9.4)	66,149.9 (9.6)	

Notes: 1. Figures in parentheses are percentage to annual export receipts of the respective years

2. Due to rounding off separate items, totals may show minor differences

Table 5: Export Receipts Series

( Million US\$)

Period	1995-96	1996-97	1997-98	1998-99	1999-00	2000-01	2001-02	2002-03	2003-04	2004-05
Annual	8,543.9	8,239.1	8,323.1	7,762.8	7,958.4	8,844.5	9,344.9	10,750.0	12,015.3	
Growth (%)	8.5	-3.6	1.0	-6.7	2.5	11.1	5.7	15.0	11.8	
<b>Quarter-wise</b>										
Quarter-I	2,019.9 (23.7)	1,967.9 (23.9)	2,115.2 (25.4)	1,887.4 (24.3)	1,795.7 (22.6)	2,192.2 (24.8)	2,251.6 (24.1)	2,649.2 (24.6)	2,910.5 (24.2)	3,327.8
Quarter-II	2,111.1 (24.7)	2,058.1 (25.0)	2,109.0 (25.3)	1,883.1 (24.3)	1,912.0 (24.0)	2,073.9 (23.5)	2,450.9 (26.2)	2,511.5 (23.4)	2,967.7 (24.7)	3,523.0
Quarter-III	2,262.0 (26.5)	2,066.9 (25.1)	2,077.3 (25.0)	2,039.9 (26.3)	2,111.8 (26.5)	2,291.3 (25.9)	2,288.4 (24.5)	2,625.8 (24.4)	2,976.7 (24.8)	3,514.4
Quarter-IV	2,150.9 (25.2)	2,146.1 (26.1)	2,021.6 (24.3)	1,952.4 (25.2)	2,138.9 (26.9)	2,287.1 (25.9)	2,354.1 (25.2)	2,963.4 (27.6)	3,160.4 (26.3)	
<b>Month-wise</b>										
July	702.1 (8.2)	676.5 (8.2)	735.4 (8.8)	639.6 (8.2)	622.4 (7.8)	696.4 (7.9)	721.0 (7.7)	915.4 (8.5)	992.5 (8.3)	1,149.4
August	715.7 (8.4)	629.9 (7.7)	690.6 (8.3)	616.7 (7.9)	559.8 (7.0)	764.0 (8.6)	802.4 (8.6)	881.7 (8.2)	932.6 (7.8)	1,079.0
September	602.1 (7.1)	661.5 (8.0)	689.2 (8.3)	631.1 (8.1)	613.5 (7.7)	731.9 (8.3)	728.3 (7.8)	852.1 (7.9)	985.4 (8.2)	1,099.4
October	696.0 (8.2)	730.9 (8.9)	774.6 (9.3)	644.0 (8.3)	613.2 (7.7)	687.5 (7.8)	928.3 (9.9)	859.8 (8.0)	1,011.0 (8.4)	1,169.4
November	691.7 (8.1)	627.7 (7.6)	646.6 (7.8)	593.6 (7.7)	617.0 (7.8)	681.4 (7.7)	800.9 (8.6)	852.2 (7.9)	785.9 (6.5)	1,049.6
December	723.4 (8.5)	699.5 (8.5)	687.8 (8.3)	645.4 (8.3)	681.7 (8.6)	704.9 (8.0)	721.6 (7.7)	799.6 (7.4)	1,170.8 (9.7)	1,304.0
January	786.2 (9.2)	632.4 (7.7)	636.2 (7.6)	672.2 (8.7)	691.4 (8.7)	825.0 (9.3)	792.4 (8.5)	939.6 (8.7)	1,037.6 (8.6)	1,079.9
February	681.5 (8.0)	664.5 (8.1)	714.5 (8.6)	667.9 (8.6)	673.7 (8.5)	692.7 (7.8)	740.3 (7.9)	805.6 (7.5)	873.3 (7.3)	1,106.1
March	794.3 (9.3)	770.1 (9.4)	726.6 (8.6)	699.9 (9.0)	746.6 (9.4)	773.6 (8.8)	755.7 (8.1)	880.6 (8.2)	1,065.9 (8.9)	1,328.4
April	697.5 (8.2)	738.4 (9.0)	712.5 (8.6)	717.0 (9.2)	641.1 (8.1)	733.5 (8.3)	764.2 (8.2)	923.5 (8.6)	1,049.1 (8.7)	1,230.2
May	727.1 (8.5)	708.6 (8.6)	651.9 (7.8)	607.8 (7.8)	683.5 (8.6)	778.3 (8.8)	770.9 (8.3)	1,012.5 (9.4)	969.1 (8.1)	1,123.7
June	726.3 (8.5)	699.1 (8.5)	657.2 (7.9)	627.5 (8.1)	814.4 (10.2)	775.3 (8.8)	819.0 (8.8)	1,027.4 (9.6)	1,142.2 (9.5)	

Notes: 1. Figures in parentheses are percentage to annual export receipts of the respective years

2. Due to rounding off separate items, totals may show minor differences