

SUMMARY

(Amount in million)

Table 1: Key Indicators of Export Receipts	Pak. Rs.	US \$
December 2004	77,652	1,304
November 2004	62,910	1,050
%Change during December 2004 over November 2004	23.4	24.2
December 2003	67,198	1,171
%Change during December 2004 over December 2003	15.6	11.4
July 2004 – December 2004	406,019	6,851
July 2003 – December 2003	338,617	5,878
%Change during July 2004 – December 2004 over July 2003 – December 2003	19.9	16.6
Monthly average during July 2004 – December 2004	67,670	1,142
Monthly average during July 2003 – December 2003	56,436	980
FY04	691,827	12,015
FY03	628,655	10,750
%Change during FY04 over FY03	10.0	11.8
Monthly average during FY04	57,652	1,001
Monthly average during FY03	52,388	896

Figure 1: Export Receipts

Period: July- December

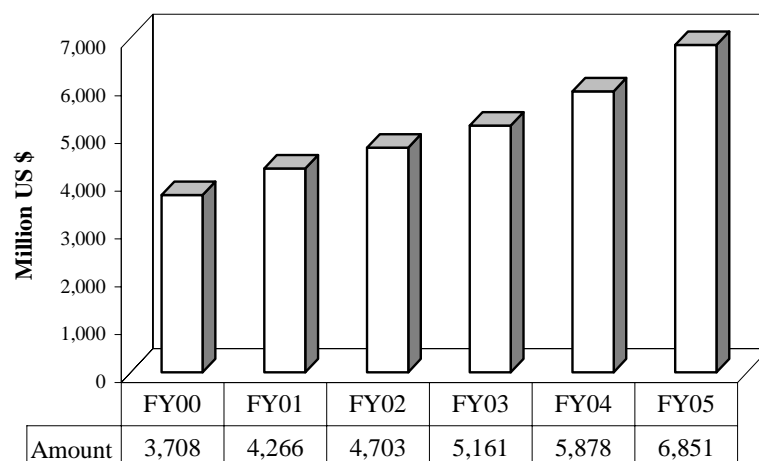


Table 2: Export Receipts by Major Commodity Groups

(Amount in million)

Commodity	December			July- December		
	2004	2004	2003	2004-2005	2003-2004	%
	Pak Rs.			US \$		Change
Cotton / Yarn	17,292	290	272	1,497	1,217	23.0
Other Made-up Tex Articles; Sets	9,435	158	151	837	815	2.7
Articles of Apparel & Clothing Acc Kn / Cr	9,382	158	149	995	838	18.7
Cereals	4,232	71	58	346	283	22.3
Articles of Apparel/Clothing Acc not Kn/Cr	3,897	65	67	372	358	3.9
Mineral Fuels, Oils & Distillation Products	3,080	52	15	245	78	214.1
Arms and Ammunition; Parts and Acc	2,855	48	0	53	3	1,666.7
Special Woven Fabrics, Tufted Text Fab	2,519	42	40	240	202	18.8
Raw Hides, Skins & Leather not Fur Skins	2,485	42	39	219	187	17.1
Articles of Leather, Travel Goods, Handbags	2,286	38	39	211	192	9.9
Toys, Games & Sports Requisites;	1,563	26	26	171	157	8.9
Carpets and other Tex Floor Coverings	1,520	26	28	133	125	6.4
Man-Made Filaments	1,442	24	36	127	143	-11.2
Man-Made Staple Fibers	1,324	22	20	111	97	14.4
Plastics and Articles thereof	1,123	19	20	108	78	38.5
Fish and Crustaceans	1,033	17	19	70	65	7.7
Optical, Photographic, Measuring & Medical	960	16	15	93	86	8.1
Sugars and Sugar Confectionery	855	14	5	77	39	97.4
All Others	10,369	176	172	946	915	3.4
Total	77,652	1,304	1,171	6,851	5,878	16.6

Kn: Knitted, Cr: Crocheted, Acc: Accessories, Tex: Textile, Fab: Fabrics

Figure 2: Percent Share of Major Commodity Groups in Export Receipts

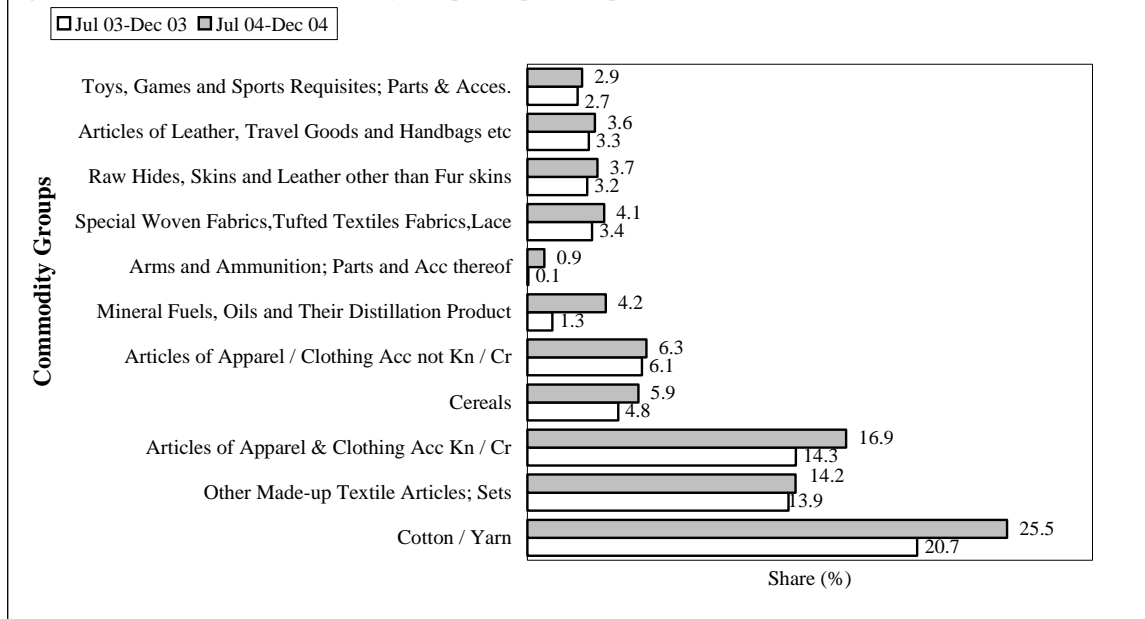


Table 3: Export Receipts by Major Countries

(Amount in million)

Country	December			July - December		
	2004	2004	2003	2004-2005	2003-2004	%
	Pak Rs			US \$		Change
U. S. A.	16,018	269	246	1,586	1,360	16.6
U. A. E.	5,811	98	126	550	638	-13.8
U. K.	5,085	85	86	559	429	30.3
Germany	4,147	70	51	339	309	9.7
Afghanistan	3,991	67	35	320	160	100.0
Hong Kong	3,320	56	61	332	293	13.3
Italy	2,763	46	41	255	203	25.6
France	2,393	40	31	208	175	18.9
Spain	1,886	32	33	167	146	14.4
Belgium	1,765	30	28	145	119	21.8
Netherlands	1,744	29	22	138	123	12.2
Saudi Arabia	1,743	29	40	171	213	-19.7
China	1,488	25	26	122	114	7.0
South Korea	1,288	22	27	87	97	-10.3
All Others	24,210	406	318	1,872	1,499	24.9
Total	77,652	1,304	1,171	6,851	5,878	16.6

Figure 3: % Share of Major Countries in Export Receipts

Period: July 2004 - December 2004

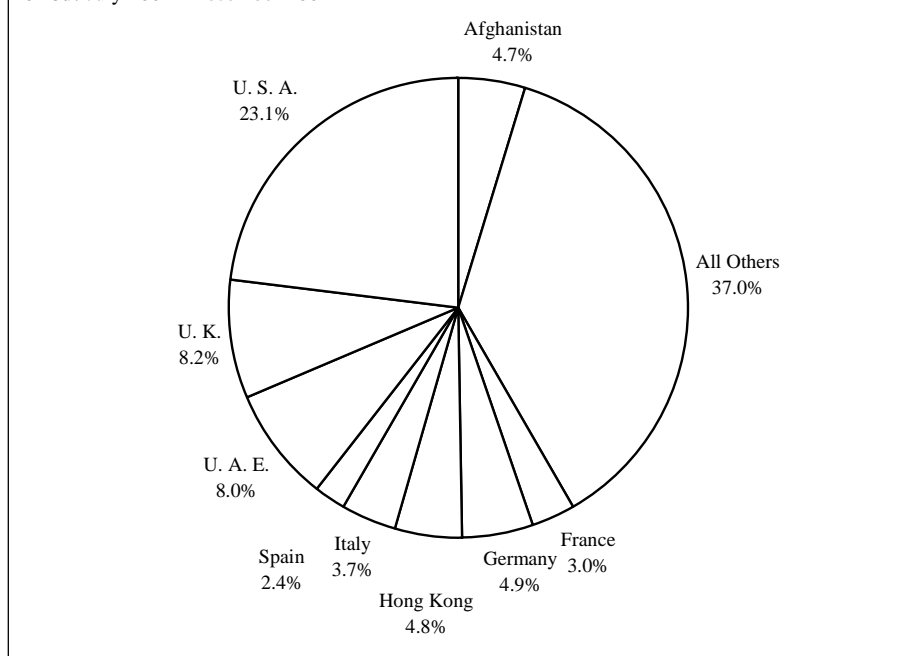


Figure 4: Yearly Export Receipts

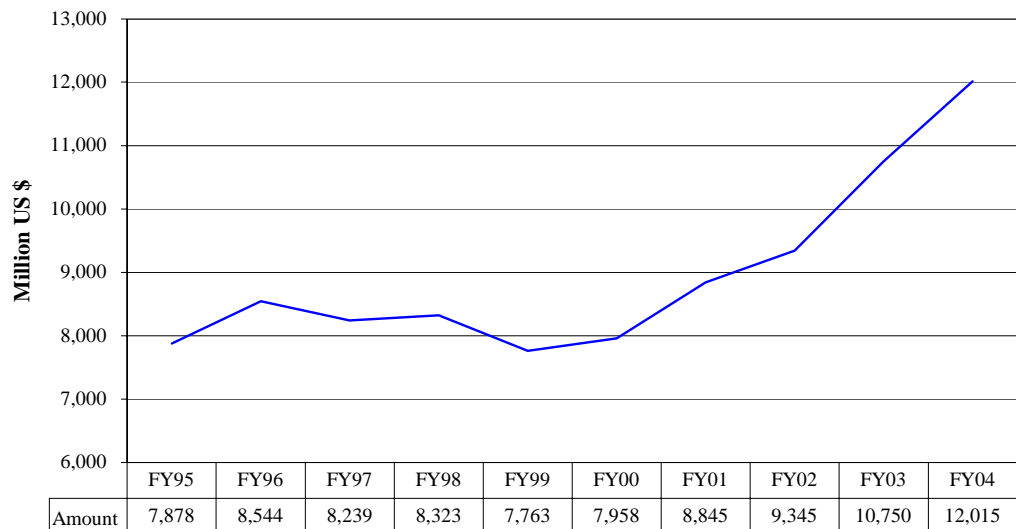


Figure 5: Monthly Export Receipts

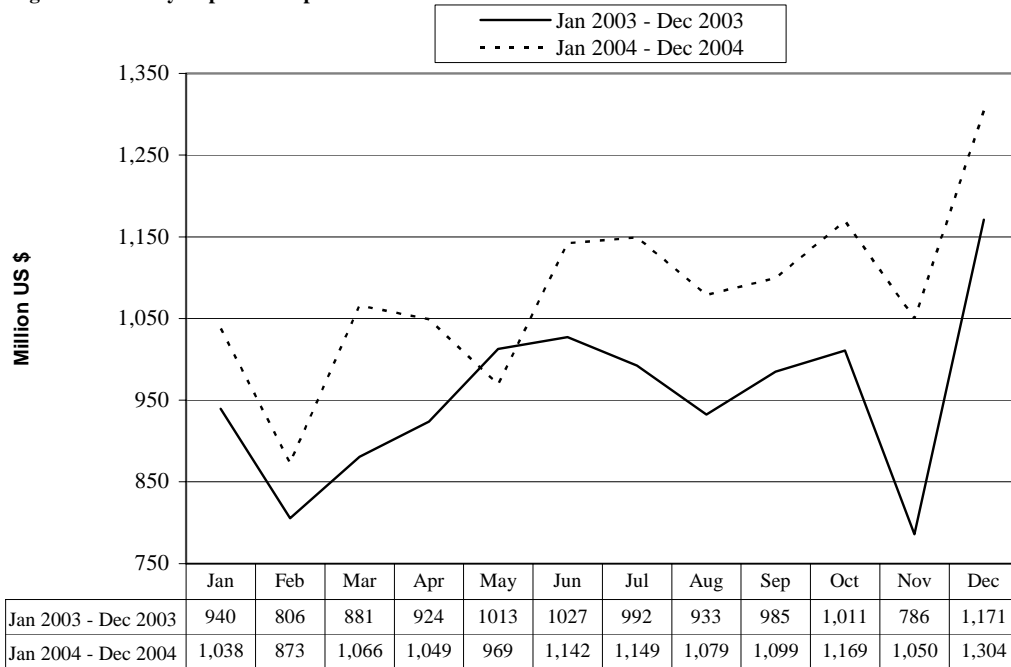


Table 4: Export Receipts Series

(Million Rs)

Period	1995-96	1996-97	1997-98	1998-99	1999-00	2000-01	2001-02	2002-03	2003-04	2004-05
Annual	287,181.1	321,610.8	359,261.5	389,019.2	412,082.1	517,495.6	573,987.2	628,655.3	691,827.5	
Growth (%)	18.1	12.0	11.7	8.3	5.9	25.6	10.9	9.5	10.0	
<u>Quarter-wise</u>										
Quarter-I	63,324.7 (22.1)	70,512.1 (21.9)	85,907.9 (23.9)	92,523.2 (23.8)	92,763.8 (22.5)	118,869.7 (23.0)	144,370.5 (25.2)	157,696.1 (25.1)	168,165.9 (24.3)	195,257.1
Quarter-II	70,934.6 (24.7)	81,271.5 (25.3)	91,938.5 (25.6)	94,906.2 (24.4)	98,966.7 (24.0)	119,704.7 (23.1)	150,425.4 (26.2)	147,405.4 (23.4)	170,451.2 (24.6)	210,762.3
Quarter-III	77,922.1 (27.1)	83,132.8 (25.8)	91,762.1 (25.5)	101,948.1 (26.2)	109,361.2 (26.5)	136,849.1 (26.4)	137,656.1 (24.0)	152,416.7 (24.2)	170,881.2 (24.7)	
Quarter-IV	74,999.8 (26.1)	86,694.2 (27.0)	89,653.0 (25.0)	99,641.7 (25.6)	110,990.4 (26.9)	142,072.1 (27.5)	141,535.2 (24.7)	171,137.2 (27.2)	182,329.2 (26.4)	
<u>Month-wise</u>										
July	21,907.2 (7.6)	23,884.4 (7.4)	29,859.6 (8.3)	30,114.1 (7.7)	32,118.9 (7.8)	36,566.6 (7.1)	46,206.5 (8.1)	54,731.1 (8.7)	57,308.1 (8.3)	66,983.6
August	22,441.0 (7.8)	22,410.5 (7.0)	28,053.3 (7.8)	30,789.3 (7.9)	28,909.1 (7.0)	41,241.3 (8.0)	51,444.5 (9.0)	52,468.8 (8.3)	53,894.1 (7.8)	63,440.2
September	18,976.5 (6.6)	24,217.2 (7.5)	27,995.0 (7.8)	31,619.8 (8.1)	31,735.8 (7.7)	41,061.8 (7.9)	46,719.5 (8.1)	50,496.2 (8.0)	56,963.7 (8.2)	64,833.3
October	22,347.2 (7.8)	27,890.8 (8.7)	33,014.4 (9.2)	32,445.0 (8.3)	31,735.8 (7.7)	39,986.2 (7.7)	57,750.7 (10.1)	50,772.7 (8.1)	58,193.6 (8.4)	70,199.6
November	23,749.5 (8.3)	25,545.2 (7.9)	28,551.8 (7.9)	30,154.9 (7.8)	31,941.1 (7.8)	38,842.6 (7.5)	48,957.5 (8.5)	49,925.9 (7.9)	45,059.3 (6.5)	62,910.2
December	24,837.9 (8.6)	28,135.5 (8.7)	30,372.3 (8.5)	32,306.2 (8.3)	35,289.7 (8.6)	40,875.9 (7.9)	43,717.3 (7.6)	46,706.8 (7.4)	67,198.3 (9.7)	77,652.5
January	27,000.0 (9.4)	25,433.7 (7.9)	28,095.3 (7.8)	33,520.1 (8.6)	35,796.5 (8.7)	48,728.2 (9.4)	47,703 (8.3)	54,668.6 (8.7)	59,554.7 (8.6)	
February	23,466.1 (8.2)	26,727.5 (8.3)	31,554.7 (8.8)	33,477.2 (8.6)	34,895.6 (8.5)	41,297.8 (8.0)	44,534.4 (7.8)	46,788.2 (7.4)	50,093.8 (7.2)	
March	27,456.0 (9.6)	30,971.6 (9.6)	32,112.1 (8.9)	34,950.8 (9.0)	38,669.1 (9.4)	46,823.1 (9.0)	45,418.7 (7.9)	50,959.9 (8.1)	61,232.8 (8.9)	
April	24,201.8 (8.4)	29,725.5 (9.2)	31,557.4 (8.8)	36,146.0 (9.3)	33,202.6 (8.1)	44,794.7 (8.7)	45,944.7 (8.0)	53,358.9 (8.5)	60,284.2 (8.7)	
May	25,337.6 (8.8)	28,658.7 (8.9)	28,788.7 (8.0)	31,055.4 (8.0)	35,401.3 (8.6)	48,124.0 (9.3)	46,348 (8.1)	58,454.1 (9.3)	55,895.0 (8.1)	
June	25,460.4 (8.9)	28,310.0 (8.8)	29,306.9 (8.2)	32,440.3 (8.3)	42,386.5 (10.3)	49,153.3 (9.5)	49,242.5 (8.6)	59,324.1 (9.4)	66,149.9 (9.6)	

Notes: 1. Figures in parentheses are percentage to annual export receipts of the respective years

2. Due to rounding off separate items, totals may show minor differences

Table 5: Export Receipts Series

(Million US\$)

Period	1995-96	1996-97	1997-98	1998-99	1999-00	2000-01	2001-02	2002-03	2003-04	2004-05
Annual	8,543.9	8,239.1	8,323.1	7,762.8	7,958.4	8,844.5	9,344.9	10,750.0	12,015.3	
Growth (%)	8.5	-3.6	1.0	-6.7	2.5	11.1	5.7	15.0	11.8	
Quarter-wise										
Quarter-I	2,019.9 (23.7)	1,967.9 (23.9)	2,115.2 (25.4)	1,887.4 (24.3)	1,795.7 (22.6)	2,192.2 (24.8)	2,251.6 (24.1)	2,649.2 (24.6)	2,910.5 (24.2)	3,327.8
Quarter-II	2,111.1 (24.7)	2,058.1 (25.0)	2,109.0 (25.3)	1,883.1 (24.3)	1,912.0 (24.0)	2,073.9 (23.5)	2,450.9 (26.2)	2,511.5 (23.4)	2,967.7 (24.7)	3523.0
Quarter-III	2,262.0 (26.5)	2,066.9 (25.1)	2,077.3 (25.0)	2,039.9 (26.3)	2,111.8 (26.5)	2,291.3 (25.9)	2,288.4 (24.5)	2,625.8 (24.4)	2,976.7 (24.8)	
Quarter-IV	2,150.9 (25.2)	2,146.1 (26.1)	2,021.6 (24.3)	1,952.4 (25.2)	2,138.9 (26.9)	2,287.1 (25.9)	2,354.1 (25.2)	2,963.4 (27.6)	3,160.4 (26.3)	
Month-wise										
July	702.1 (8.2)	676.5 (8.2)	735.4 (8.8)	639.6 (8.2)	622.4 (7.8)	696.4 (7.9)	721.0 (7.7)	915.4 (8.5)	992.5 (8.3)	1,149.4
August	715.7 (8.4)	629.9 (7.7)	690.6 (8.3)	616.7 (7.9)	559.8 (7.0)	764.0 (8.6)	802.4 (8.6)	881.7 (8.2)	932.6 (7.8)	1,079.0
September	602.1 (7.1)	661.5 (8.0)	689.2 (8.3)	631.1 (8.1)	613.5 (7.7)	731.9 (8.3)	728.3 (7.8)	852.1 (7.9)	985.4 (8.2)	1,099.4
October	696.0 (8.2)	730.9 (8.9)	774.6 (9.3)	644.0 (8.3)	613.2 (7.7)	687.5 (7.8)	928.3 (9.9)	859.8 (8.0)	1,011.0 (8.4)	1,169.4
November	691.7 (8.1)	627.7 (7.6)	646.6 (7.8)	593.6 (7.7)	617.0 (7.8)	681.4 (7.7)	800.9 (8.6)	852.2 (7.9)	785.9 (6.5)	1,049.6
December	723.4 (8.5)	699.5 (8.5)	687.8 (8.3)	645.4 (8.3)	681.7 (8.6)	704.9 (8.0)	721.6 (7.7)	799.6 (7.4)	1,170.8 (9.7)	1,304.0
January	786.2 (9.2)	632.4 (7.7)	636.2 (7.6)	672.2 (8.7)	691.4 (8.7)	825.0 (9.3)	792.4 (8.5)	939.6 (8.7)	1,037.6 (8.6)	
February	681.5 (8.0)	664.5 (8.1)	714.5 (8.6)	667.9 (8.6)	673.7 (8.5)	692.7 (7.8)	740.3 (7.9)	805.6 (7.5)	873.3 (7.3)	
March	794.3 (9.3)	770.1 (9.4)	726.6 (8.6)	699.9 (9.0)	746.6 (9.4)	773.6 (8.8)	755.7 (8.1)	880.6 (8.2)	1,065.9 (8.9)	
April	697.5 (8.2)	738.4 (9.0)	712.5 (8.6)	717.0 (9.2)	641.1 (8.1)	733.5 (8.3)	764.2 (8.2)	923.5 (8.6)	1,049.1 (8.7)	
May	727.1 (8.5)	708.6 (8.6)	651.9 (7.8)	607.8 (7.8)	683.5 (8.6)	778.3 (8.8)	770.9 (8.3)	1,012.5 (9.4)	969.1 (8.1)	
June	726.3 (8.5)	699.1 (8.5)	657.2 (7.9)	627.5 (8.1)	814.4 (10.2)	775.3 (8.8)	819.0 (8.8)	1,027.4 (9.6)	1,142.2 (9.5)	

Notes: 1. Figures in parentheses are percentage to annual export receipts of the respective years

2. Due to rounding off separate items, totals may show minor differences