

Diodotus
Euthydemus-I
Demetrius-I
Autonomous Local Copper Coinage of KPK
Euthydemus-II
Agathocles
Pantaleon
Antimachus-I
Apollodotus-I
Antimachus-II
Eukratides-I
Heliocles-I
Menander-I
Zoilus-I
Strato-I
Lysias
Antialcidas
Heliocles-II
Philoexnos
Diomedes
Amyntas
Menander-II
Archebios
Hermaeus
Posthumous Series in the name of Hermaeus
Apollodotus-II
Hippostratus
Dionysius
Zoilus-II
Strato-II

SBP 2007. 2291



Name of Ruler : MENANDER-I
Denomination : Indus-Standard Drachm
Metal : Mix debased
Weight : 2.1 gm
Diameter : 16.62 mm
Series : Indus Greek

C.No.82

Obverse

Diademed bust of king to right.
ΒΑΣΙΛΕΩΣ ΣΩΤΗΡΟΣ ΜΕΝΑΝΔΡΟΥ

Reverse

Athena Alkidemos standing to left
holding shield on outstretched left arm
and hurling thunderbolt with right.

Maharajasa tratarasa Menamdrasa



SBP 2008. 2453



Name of Ruler : MENANDER-I
Denomination : Indus-Standard Drachm
Metal : AR
Weight : 2.4 gm
Diameter : 15.24 mm
Series : Indus Greek

C.No.83

Obverse

Diademed bust of king to right.
ΒΑΣΙΛΕΩΣ ΣΩΤΗΡΟΣ ΜΕΝΑΝΔΡΟΥ

Reverse

Athena Alkidemos standing to right
holding shield on outstretched left arm.

Maharajasa tratarasa Menamdrasa

SBP 2008. 2452



Name of Ruler : MENANDER-I
Denomination : Indus-Standard Drachm
Metal : AR
Weight : 2.3 gm
Diameter : 15.53 mm
Series : Indus Greek

C.No.84

Obverse

Diademed bust of king to left seen
from the back, wielding spear with his
upraised right hand.

ΒΑΣΙΛΕΩΣ ΣΩΤΗΡΟΣ ΜΕΝΑΝΔΡΟΥ

Reverse

Athena Alkidemos standing to right holding
aegis on outstretched left arm, and hurling
thunderbolt with right hand.

Maharajasa tratarasa Menamdrasa



SBP 2010. 6219



Name of Ruler : MENANDER-I
Denomination : Indus-Standard Drachm
Metal : AR
Weight : 1.8 gm
Diameter : 16.44 mm
Series : Indus Greek

C.No.85

Obverse

Diademed, bare-headed bust of king left seen from behind, holding spear in right hand.

ΒΑΣΙΛΕΩΣ ΣΩΤΗΡΟΣ ΜΕΝΑΝΔΡΟΥ

Reverse

Athena Alkidemos standing left, holding horizontal shield on outstretched left arm hurling thunderbolt with right hand.

Maharajasa tratarasa Menamdrasa

SBP 2008. 2451



Name of Ruler : MENANDER-I
Denomination : Indus-Standard Drachm
Metal : AR
Weight : 2.3 gm
Diameter : 18.04 mm
Series : Indus Greek

C.No.86

Obverse

Diademed, helmeted bust of king right.

ΒΑΣΙΛΕΩΣ ΣΩΤΗΡΟΣ ΜΕΝΑΝΔΡΟΥ

Reverse

Athena Alkidemos standing to left holding shield on outstretched arm and hurling thunderbolt in other hand.

Maharajasa tratarasa Menamdrasa



SBP 2009. 4298



Name of Ruler : MENANDER-I
Denomination : Indus-Standard Octuple
Metal : AE
Weight : 11.4 gm
Dimension : 22.95 x 23.14 mm
Series : Indus Greek

C.No.87

Obverse

Helmeted bust of Athena right.

ΒΑΣΙΛΕΩΣ ΣΩΤΗΡΟΣ ΜΕΝΑΝΔΡΟΥ

Reverse

Winged Nike standing to right holding wreath and palm.

Maharajasa tratarasa Menamdrasa



SBP 2009. 4437



Name of Ruler : MENANDER-I
 Denomination : Indus-Standard Quadruple
 Metal : AE
 Weight : 8.1 gm
 Dimension : 20.55 x 20.30 mm
 Series : Indus Greek

C.No.88

Obverse

Helmeted bust of Athena to right.

ΒΑΣΙΛΕΩΣ ΣΩΤΗΡΟΣ ΜΕΝΑΝΔΡΟΥ

Reverse

Round shield with Gorgon head in centre.

Maharajasa tratarasa Menamdrasa

SBP 2009. 4405



Name of Ruler : MENANDER-I
 Denomination : Indus-Standard Quadruple
 Metal : AE
 Weight : 7.4 gm
 Dimension : 20.68 x 21.50 mm
 Series : Indus Greek

C.No.89

Obverse

Diademed bust of king to left wielding spear with his upraised right hand.

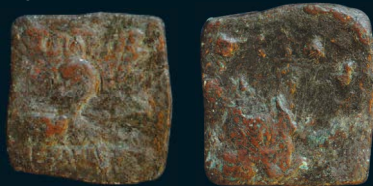
ΒΑΣΙΛΕΩΣ ΣΩΤΗΡΟΣ ΜΕΝΑΝΔΡΟΥ

Reverse

Athena Alkidemos standing to right holding shield on outstretched left arm and hurling thunderbolt with right hand.

Maharajasa tratarasa Menamdrasa

SBP 2007. 2275



Name of Ruler : MENANDER-I
 Denomination : Indus-Standard Quadruple
 Metal : AE
 Weight : 8.4 gm
 Dimension : 22.69 x 23.63 mm
 Series : Indus Greek

C.No.90

Obverse

Diademed bust of king to left seen from the back wielding spear with his upraised right hand.

ΒΑΣΙΛΕΩΣ ΣΩΤΗΡΟΣ ΜΕΝΑΝΔΡΟΥ

Reverse

(Eroded surface, very limited details visible) Athena Alkidemos standing to right, holding shield on outstretched left arm, and hurling thunderbolt with right hand.

Maharajasa tratarasa Menamdrasa

SBP 2009. 3805



Name of Ruler : MENANDER-I
Denomination : Indus-Standard Quadruple
Metal : AE
Weight : 7.5 gm
Dimension : 19.43 x 20.60 mm
Series : Indus Greek

C.No.91

Obverse

Helmeted bust of Athena right.
ΒΑΣΙΛΕΩΣ ΣΩΤΗΡΟΣ ΜΕΝΑΝΔΡΟΥ

Reverse

Winged Nike standing to right holding wreath and palm.

Maharajasa tratarasa Menamdrasa

SBP 2007. 2274



Name of Ruler : MENANDER-I
Denomination : Indus-Standard Quadruple
Metal : AE
Weight : 8.2 gm
Dimension : 21.52 x 21.73 mm
Series : Indus Greek

C.No.92

Obverse

Diademed bust of king to left seen from back wielding spear with his upraised right hand.

ΒΑΣΙΛΕΩΣ ΣΩΤΗΡΟΣ ΜΕΝΑΝΔΡΟΥ

Reverse

Athena Alkidemos standing to right holding shield on outstretched left arm and hurling thunderbolt with right hand.

Maharajasa tratarasa Menamdrasa



SBP 2009. 4222



Name of Ruler : MENANDER-I
Denomination : Indus-Standard Quadruple
Metal : AE
Weight : 8.6 gm
Dimension : 20.32 x 20.01 mm
Series : Indus Greek

C.No.93

Obverse

Helmeted bust of Athena right.
ΒΑΣΙΛΕΩΣ ΣΩΤΗΡΟΣ ΜΕΝΑΝΔΡΟΥ

Reverse

Winged Nike standing to right holding wreath and palm.

Maharajasa tratarasa Menamdrasa

SBP 2008. 2454



Name of Ruler : MENANDER-I
Denomination : Indus-Standard Dichalkon
Metal : AE
Weight : 4.8 gm
Dimension : 18.36 x 18.47 mm
Series : Indus Greek

C.No.94

Obverse

Helmeted bust of Athena right.
ΒΑΣΙΛΕΩΣ ΣΩΤΗΡΟΣ ΜΕΝΑΝΔΡΟΥ

Reverse

Winged Nike standing to right holding
wreath and palm.
Maharajasa tratarasa Menamdrasa

SBP 2009. 4607



Name of Ruler : MENANDER-I
Denomination : Indus-Standard Dichalkon
Metal : AE
Weight : 5.5 gm
Dimension : 20.22 x 19.31 mm
Series : Indus Greek

C.No.95

Obverse

Helmeted bust of Athena to right.
ΒΑΣΙΛΕΩΣ ΣΩΤΗΡΟΣ ΜΕΝΑΝΔΡΟΥ

Reverse

Round shield with Gorgon head in centre.
Maharajasa tratarasa Menamdrasa

SBP 2009. 5173



Name of Ruler : MENANDER-I
Denomination : Indus-Standard Dichalkon
Metal : AE
Weight : 4.8 gm
Dimension : 19.88 x 19.81 mm
Series : Indus Greek

C.No.96

Obverse

Helmeted bust of Athena to right.
ΒΑΣΙΛΕΩΣ ΣΩΤΗΡΟΣ ΜΕΝΑΝΔΡΟΥ

Reverse

Round shield with Gorgon head in centre.
Maharajasa tratarasa Menamdrasa

SBP 2010. 6221



Name of Ruler : MENANDER-I
 Denomination : Indus-Standard Dichalkon
 Metal : Mix debased
 Weight : 4.9 gm
 Diameter : 23.97 mm
 Series : Indus Greek

C.No.97

Obverse

Helmeted bust of Athena to right.
 ΒΑΣΙΛΕΩΣ ΣΩΤΗΡΟΣ ΜΕΝΑΝΔΡΟΥ

Reverse

Athena Alkidemos standing left, holding horizontal shield on outstretched left arm hurling thunderbolt with right hand.

Maharajasa tratarasa Menamdrasa



SBP 2007. 2164



Name of Ruler : MENANDER-I
 Denomination : Indus-Standard chalkon
 Metal : AE
 Weight : 3.1 gm
 Dimension : 16.74 x 13.97 mm
 Series : Indus Greek

C.No.98

Obverse

Elephant head to left.
 ΒΑΣΙΛΕΩΣ ΣΩΤΗΡΟΣ ΜΕΝΑΝΔΡΟΥ

Reverse

Club.

Maharajasa tratarasa Menamdrasa



SBP 2007. 2165



Name of Ruler : MENANDER-I
 Denomination : Indus-Standard chalkon
 Metal : AE
 Weight : 2.6 gm
 Dimension : 17.24 x 17.25 mm
 Series : Indus Greek

C.No.99

Obverse

Elephant head to left.
 ΒΑΣΙΛΕΩΣ ΣΩΤΗΡΟΣ ΜΕΝΑΝΔΡΟΥ

Reverse

Club.

Maharajasa tratarasa Menamdrasa

SBP 2007. 2166



Name of Ruler : MENANDER-I
Denomination : Indus-Standard Chalkous
Metal : AE
Weight : 2.1 gm
Dimension : 14.59 x 15.25 mm
Series : Indus Greek

C.No.100

Obverse

Elephant head to left.

ΒΑΣΙΛΕΩΣ ΣΩΤΗΡΟΣ ΜΕΝΑΝΔΡΟΥ

Reverse

Club.

Maharajasa tratarasa Menamdrasa

SBP 2007. 2167



Name of Ruler : MENANDER-I
Denomination : Indus-Standard Chalkous
Metal : AE
Weight : 2.5 gm
Dimension : 14.32 x 14.03 mm
Series : Indus Greek

C.No.101

Obverse

Elephant head to left.

ΒΑΣΙΛΕΩΣ ΣΩΤΗΡΟΣ ΜΕΝΑΝΔΡΟΥ

Reverse

Club.

Maharajasa tratarasa Menamdrasa

SBP 2007. 2168



Name of Ruler : MENANDER-I
Denomination : Indus-Standard Chalkous
Metal : AE
Weight : 1.3 gm
Dimension : 11.48 x 12.53 mm
Series : Indus Greek

C.No.102

Obverse

Elephant head to left.

ΒΑΣΙΛΕΩΣ ΣΩΤΗΡΟΣ ΜΕΝΑΝΔΡΟΥ

Reverse

Club.

Maharajasa tratarasa Menamdrasa

SBP 2007. 2169



Name of Ruler : MENANDER-I
Denomination : Indus-Standard Chalkous
Metal : AE
Weight : 2.1 gm
Dimension : 14.59 x 15.25 mm
Series : Indus Greek

C.No.103

Obverse

Elephant head to left.

ΒΑΣΙΛΕΩΣ ΣΩΤΗΡΟΣ ΜΕΝΑΝΔΡΟΥ

Reverse

Club.

Maharajasa tratarasa Menamdrasa

SBP 2009. 4171



Name of Ruler : MENANDER-I
Denomination : Indus-Standard Chalkous
Metal : AE
Weight : 2.2 gm
Dimension : 13.43 x 14.60 mm
Series : Indus Greek

C.No.104

Obverse

Elephant head to left

ΒΑΣΙΛΕΩΣ ΣΩΤΗΡΟΣ ΜΕΝΑΝΔΡΟΥ

Reverse

Club, monogram at left.

Maharajasa tratarasa Menamdrasa



SBP 2009. 4172



Name of Ruler : MENANDER-I
Denomination : Indus-Standard Chalkous
Metal : AE
Weight : 2.4 gm
Dimension : 13.81 x 12.91 mm
Series : Indus Greek

C.No.105

Obverse

Elephant head to left.

ΒΑΣΙΛΕΩΣ ΣΩΤΗΡΟΣ ΜΕΝΑΝΔΡΟΥ

Reverse

Club, monogram at left.

Maharajasa tratarasa Menamdrasa



SBP 2009. 4176



Name of Ruler : MENANDER-I
 Denomination : Indus-Standard Chalkous
 Metal : AE
 Weight : 2.3 gm
 Dimension : 12.81 x 13.34 mm
 Series : Indus Greek

C.No.106

Obverse

Reverse

Elephant head to left.

ΒΑΣΙΛΕΩΣ ΣΩΤΗΡΟΣ ΜΕΝΑΝΔΡΟΥ

Club, monogram at left.

Maharajasa tratarasa Menamdrasa



SBP 2009. 4182



Name of Ruler : MENANDER-I
 Denomination : Indus-Standard Chalkous
 Metal : AE
 Weight : 2.6 gm
 Dimension : 12.09 x 15.86 mm
 Series : Indus Greek

C.No.107

Obverse

Reverse

Elephant head to left.

ΒΑΣΙΛΕΩΣ ΣΩΤΗΡΟΣ ΜΕΝΑΝΔΡΟΥ

Club, monogram at left.

Maharajasa tratarasa Menamdrasa



SBP 2009. 4187



Name of Ruler : MENANDER-I
 Denomination : Indus-Standard Chalkous
 Metal : AE
 Weight : 1.6 gm
 Dimension : 13.40 x 14.93 mm
 Series : Indus Greek

C.No.108

Obverse

Reverse

Elephant head to left.

ΒΑΣΙΛΕΩΣ ΣΩΤΗΡΟΣ ΜΕΝΑΝΔΡΟΥ

Club, monogram at left.

Maharajasa tratarasa Menamdrasa



SBP 2009. 4188



Name of Ruler : MENANDER-I
Denomination : Indus-Standard Chalkous
Metal : AE
Weight : 1.5 gm
Dimension : 13.88 x 14.01 mm
Series : Indus Greek

C.No.109

Obverse

Elephant head to left.

ΒΑΣΙΛΕΩΣ ΣΩΤΗΡΟΣ ΜΕΝΑΝΔΡΟΥ

Reverse

Club, monogram at left.

Maharajasa tratarasa Menamdrasa



SBP 2009. 4191



Name of Ruler : MENANDER-I
Denomination : Indus-Standard Chalkous
Metal : AE
Weight : 2.4 gm
Dimension : 13.95 x 13.71 mm
Series : Indus Greek

C.No.110

Obverse

Elephant head to left.

ΒΑΣΙΛΕΩΣ ΣΩΤΗΡΟΣ ΜΕΝΑΝΔΡΟΥ

Reverse

Club, monogram at left

Maharajasa tratarasa Menamdrasa



SBP 2009. 4200



Name of Ruler : MENANDER-I
Denomination : Indus-Standard Chalkous
Metal : AE
Weight : 1.7 gm
Dimension : 12.05 x 13.52 mm
Series : Indus Greek

C.No.111

Obverse

Elephant head to left.

ΒΑΣΙΛΕΩΣ ΣΩΤΗΡΟΣ ΜΕΝΑΝΔΡΟΥ

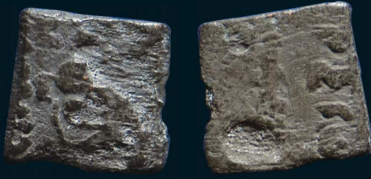
Reverse

Club, monogram at left.

Maharajasa tratarasa Menamdrasa



SBP 2009.4206



Name of Ruler : MENANDER-I
Denomination : Indus-Standard Chalkous
Metal : AE
Weight : 0.9 gm
Dimension : 10.70 x 10.27 mm
Series : Indus Greek

C.No.112

Obverse

Elephant head to left.

ΒΑΣΙΛΕΩΣ ΣΩΤΗΡΟΣ ΜΕΝΑΝΔΡΟΥ

Reverse

Club, monogram at left.

Maharajasa tratarasa Menamdrasa



SBP 2009. 4283



Name of Ruler : MENANDER-I
Denomination : Indus-Standard Chalkous
Metal : AE
Weight : 2.1 gm
Dimension : 15.61 x 15.52 mm
Series : Indus Greek

C.No.113

Obverse

Elephant head to left.

ΒΑΣΙΛΕΩΣ ΣΩΤΗΡΟΣ ΜΕΝΑΝΔΡΟΥ

Reverse

Club, monogram at left.

Maharajasa tratarasa Menamdrasa

SBP 2009. 4250



Name of Ruler : MENANDER-I
Denomination : Indus-Standard Chalkous
Metal : AE
Weight : 1.1 gm
Dimension : 12.41 x 13.65 mm
Series : Indus Greek

C.No.114

Obverse

Elephant head to left.

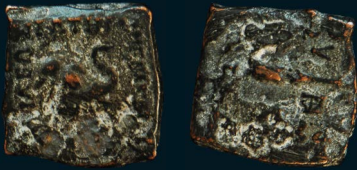
ΒΑΣΙΛΕΩΣ ΣΩΤΗΡΟΣ ΜΕΝΑΝΔΡΟΥ

Reverse

Club, monogram at left.

Maharajasa tratarasa Menamdrasa

SBP 2009. 4438



Name of Ruler : MENANDER-I
Denomination : Indus-Standard Chalkous
Metal : AE
Weight : 3.1 gm
Dimension : 14.36 x 14.87 mm
Series : Indus Greek

C.No.115

Obverse

Reverse

Elephant head to left.

ΒΑΣΙΛΕΩΣ ΣΩΤΗΡΟΣ ΜΕΝΑΝΔΡΟΥ

Club, monogram at left.

Maharajasa tratarasa Menamdrasa



SBP 2009. 4448



Name of Ruler : MENANDER-I
Denomination : Indus-Standard Chalkous
Metal : AE
Weight : 2.7 gm
Dimension : 13.01 x 13.31 mm
Series : Indus Greek

C.No.116

Obverse

Reverse

Elephant head to left.

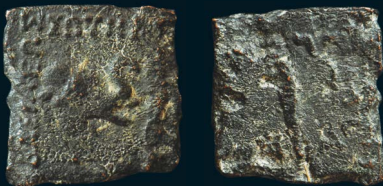
ΒΑΣΙΛΕΩΣ ΣΩΤΗΡΟΣ ΜΕΝΑΝΔΡΟΥ

Club, monogram at left.

Maharajasa tratarasa Menamdrasa



SBP 2009. 4451



Name of Ruler : MENANDER-I
Denomination : Indus-Standard Chalkous
Metal : AE
Weight : 2.4 gm
Dimension : 12.41 x 13.65 mm
Series : Indus Greek

C.No.117

Obverse

Reverse

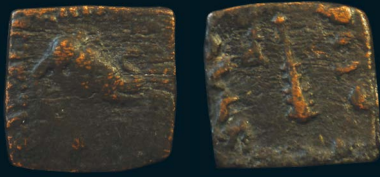
Elephant head to left.

ΒΑΣΙΛΕΩΣ ΣΩΤΗΡΟΣ ΜΕΝΑΝΔΡΟΥ

Club, monogram not visible.

Maharajasa tratarasa Menamdrasa

SBP 2009. 4621



Name of Ruler : MENANDER-I
Denomination : Indus-Standard Chalkous
Metal : AE
Weight : 1.9 gm
Dimension : 13.81 x 13.48 mm
Series : Indus Greek

C.No.118

Obverse

Elephant head to left.

ΒΑΣΙΛΕΩΣ ΣΩΤΗΡΟΣ ΜΕΝΑΝΔΡΟΥ

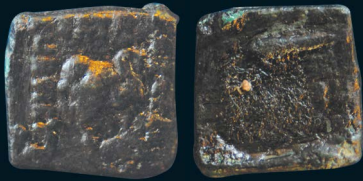
Reverse

Club, monogram at left.

Maharajasa tratarasa Menamdrasa



SBP 2007. 2175



Name of Ruler : MENANDER-I
Denomination : Indus-Standard Chalkous
Metal : AE
Weight : 2.8 gm
Dimension : 14.27 x 14.30 mm
Series : Indus Greek

C.No.119

Obverse

Elephant head to left.

ΒΑΣΙΛΕΩΣ ΣΩΤΗΡΟΣ ΜΕΝΑΝΔΡΟΥ

Reverse

Club.

Maharajasa tratarasa Menamdrasa