

Diodotus
Euthydemus-I
Demetrius-I
Autonomous Local Copper Coinage of KPK
Euthydemus-II
Agathocles
Pantaleon
Antimachus-I
Apollodotus-I
Antimachus-II
Eukratides-I
Heliocles-I
Menander-I
Zoilus-I
Strato-I
Lysias
Antialcidas
Heliocles-II
Philoexnos
Diomedes
Amyntas
Menander-II
Archebios
Hermaeus
Posthumous Series in the name of Hermaeus
Apollodotus-II
Hippostratus
Dionysius
Zoilus-II
Strato-II

SBP 2008. 2464



Name of Ruler : APOLLODOTUS-II
Denomination : Indus-Standard Drachm
Metal : AR
Weight : 2.5 gm
Diameter : 15.88 mm
Series : Indus Greek

C.No.196

Obverse

Diademed bust of king to right.

ΒΑΣΙΛΕΩΣ ΣΩΤΗΡΟΣ ΑΠΟΛΛΟΔΟΤΟΥ

Reverse

Athena Alkidemos standing to left holding shield on outstretched left arm, and hurling thunderbolt with right hand.

Maharajasa tratarasa Apaladatas



SBP 2009. 4638



Name of Ruler : APOLLODOTUS-II
Denomination : Indus-Standard Octuple
Metal : AE
Weight : 13.5 gm
Diameter : 28.13 mm
Series : Indus Greek

C.No.197

Obverse

Apollo standing three-quarters right, holding bow monogram at left.

ΒΑΣΙΛΕΩΣ ΣΩΤΗΡΟΣ ΑΠΟΛΛΟΔΟΤΟΥ

Reverse

Tripod, legend around.

Maharajasa tratarasa Apaladatas



SBP 2009. 4639



Name of Ruler : APOLLODOTUS-II
Denomination : Indus-Standard Octuple
Metal : AE
Weight : 13.2 gm
Diameter : 27.44 mm
Series : Indus Greek

C.No.198

Obverse

Apollo standing three-quarters right, holding bow.

ΒΑΣΙΛΕΩΣ ΣΩΤΗΡΟΣ ΑΠΟΛΛΟΔΟΤΟΥ

Reverse

Tripod, legend around.

Maharajasa tratarasa Apaladatas



SBP 2009. 4513



Name of Ruler : APOLLODOTUS-II
Denomination : Indus-Standard Octuple
Metal : AE
Weight : 14.20 gm
Diameter : 28.45 mm
Series : Indus Greek

C.No.199

Obverse

Apollo standing three-quarters right holding a bow.

ΒΑΣΙΛΕΩΣ ΣΩΤΗΡΟΣ ΑΠΟΛΛΟΔΟΤΟΥ



Reverse

Tripod, legend around.

Maharajasa tratarasa Apaladatasā

SBP 2009. 4508



Name of Ruler : APOLLODOTUS-II
Denomination : Indus-Standard Octuple
Metal : AE
Weight : 15.1 gm
Diameter : 28.24 mm
Series : Indus Greek

C.No.200

Obverse

Apollo standing three-quarters right holding a bow.

ΒΑΣΙΛΕΩΣ ΣΩΤΗΡΟΣ ΑΠΟΛΛΟΔΟΤΟΥ



Reverse

Tripod, legend around.

Maharajasa tratarasa Apaladatasā

SBP 2009. 4409



Name of Ruler : APOLLODOTUS-II
Denomination : Indus-Standard Octuple
Metal : AE
Weight : 13.3 gm
Diameter : 28.69 mm
Series : Indus Greek

C.No.201

Obverse

Apollo standing three-quarters right holding bow, monogram at left.

ΒΑΣΙΛΕΩΣ ΣΩΤΗΡΟΣ ΑΠΟΛΛΟΔΟΤΟΥ



Reverse

Tripod, legend around.

Maharajasa tratarasa Apaladatasā

SBP 2009. 4299



Name of Ruler : APOLLODOTUS-II
 Denomination : Indus-Standard Octuple
 Metal : AE
 Weight : 14.29 gm
 Diameter : 26.60 mm
 Series : Indus Greek

C.No.202

Obverse

Apollo standing three-quarters right holding a bow.

ΒΑΣΙΛΕΩΣ ΣΩΤΗΡΟΣ ΑΠΟΛΛΟΔΟΤΟΥ



Reverse

Tripod, legend around.

Maharajasa tratarasa Apaladatasa

SBP 2009. 4301



Name of Ruler : APOLLODOTUS-II
 Denomination : Indus-Standard Octuple
 Metal : AE
 Weight : 11 gm
 Diameter : 26.43 mm
 Series : Indus Greek

C.No.203

Obverse

Apollo standing three-quarters right holding a bow.

ΒΑΣΙΛΕΩΣ ΣΩΤΗΡΟΣ ΑΠΟΛΛΟΔΟΤΟΥ



Reverse

Tripod, legend around.

Maharajasa tratarasa Apaladatasa

SBP 2009. 4384



Name of Ruler : APOLLODOTUS-II
 Denomination : Indus-Standard Octuple
 Metal : AE
 Weight : 15.2 gm
 Diameter : 29.11 mm
 Series : Indus Greek

C.No.204

Obverse

Apollo standing three-quarters right holding a bow.

ΒΑΣΙΛΕΩΣ ΣΩΤΗΡΟΣ ΑΠΟΛΛΟΔΟΤΟΥ



Reverse

Tripod, legend around.

Maharajasa tratarasa Apaladatasa

SBP 2007. 20



Name of Ruler : APOLLODOTUS-II
Denomination : Indus-Standard Octuple
Metal : AE
Weight : 15.6 gm
Diameter : 24.78 mm
Series : Indus Greek

C.No.205

Obverse

Apollo standing three-quarters right holding a bow.

ΒΑΣΙΛΕΩΣ ΣΩΤΗΡΟΣ ΑΠΟΛΛΟΔΟΤΟΥ



Reverse

Tripod, legend around

Maharajasa tratarasa Apaladatasasa

SBP 2009. 4637



Name of Ruler : APOLLODOTUS-II
Denomination : Indus-Standard Octuple
Metal : AE
Weight : 14.4 gm
Diameter : 26.29 mm
Series : Indus Greek

C.No.206

Obverse

Apollo standing three-quarters right holding a bow.

ΒΑΣΙΛΕΩΣ ΣΩΤΗΡΟΣ ΑΠΟΛΛΟΔΟΤΟΥ



Reverse

Tripod, legend around.

Maharajasa tratarasa Apaladatasasa

SBP 2009. 4381



Name of Ruler : APOLLODOTUS-II
Denomination : Indus-Standard Octuple
Metal : AE
Weight : 11.7 gm
Diameter : 28.61 mm
Series : Indus Greek

C.No.207

Obverse

Apollo standing three-quarters right holding bow, monogram at left.

ΒΑΣΙΛΕΩΣ ΣΩΤΗΡΟΣ ΑΠΟΛΛΟΔΟΤΟΥ



Reverse

Tripod, legend around.

Maharajasa tratarasa Apaladatasasa

SBP 2008. 2465



Name of Ruler : APOLLODOTUS-II
 Denomination : Indus-Standard Quadruple
 Metal : AE
 Weight : 6.4 gm
 Dimension : 17.77 x 19.61 mm
 Series : Indus Greek

C.No.208

Obverse

Reverse

Apollo standing three-quarters right holding a bow and arrow, quiver on back.

ΒΑΣΙΛΕΩΣ ΣΩΤΗΡΟΣ ΚΑΙ ΦΙΛΟΠΑΤΟΡΟΣ
 ΑΠΟΛΛΟΔΟΤΟΥ

Tripod.

Maharajasa tratarasa Apaladatasā



SBP 2009. 4485



Name of Ruler : APOLLODOTUS-II
 Denomination : Indus-Standard Quadruple
 Metal : AE
 Weight : 8.5 gm
 Dimension : 18.18 x 23.58 mm
 Series : Indus Greek

C.No.209

Obverse

Reverse

Apollo standing three-quarters right holding a bow and arrow, quiver on back.

ΒΑΣΙΛΕΩΣ ΣΩΤΗΡΟΣ ΚΑΙ ΦΙΛΟΠΑΤΟΡΟΣ
 ΑΠΟΛΛΟΔΟΤΟΥ

Tripod.

Maharajasa tratarasa Apaladatasā



SBP 2009. 4156



Name of Ruler : APOLLODOTUS-II
 Denomination : Indus-Standard Dichalkon
 Metal : AE
 Weight : 3.5 gm
 Dimension : 16.29 x 17.21 mm
 Series : Indus Greek

C.No.210

Obverse

Reverse

Apollo standing three-quarters right holding a bow and arrow, quiver on back.

ΒΑΣΙΛΕΩΣ ΣΩΤΗΡΟΣ ΚΑΙ ΦΙΛΟΠΑΤΟΡΟΣ
 ΑΠΟΛΛΟΔΟΤΟΥ

Tripod.

Maharajasa tratarasa Apaladatasā



SBP 2009. 4398



Name of Ruler : APOLLODOTUS-II
 Denomination : Indus-Standard Dichalkon
 Metal : AE
 Weight : 4.6 gm
 Dimension : 16.69 x 17.13 mm
 Series : Indus Greek

C.No.211

Obverse

Apollo standing three-quarters right holding a bow and arrow, quiver on back.

ΒΑΣΙΛΕΩΣ ΣΩΤΗΡΟΣ ΚΑΙ ΦΙΛΟΠΑΤΟΡΟΣ
ΑΠΟΛΛΟΔΟΤΟΥ

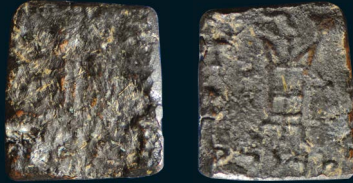
Reverse

Tripod.

Maharajasa tratarasa Apaladatasā



SBP 2009. 4174



Name of Ruler : APOLLODOTUS-II
 Denomination : Indus-Standard Dichalkon
 Metal : AE
 Weight : 2.4 gm
 Dimension : 14.70 x 16.64 mm
 Series : Indus Greek

C.No.212

Obverse

Apollo standing three-quarters right holding a bow and arrow, quiver on back.

ΒΑΣΙΛΕΩΣ ΣΩΤΗΡΟΣ ΚΑΙ ΦΙΛΟΠΑΤΟΡΟΣ
ΑΠΟΛΛΟΔΟΤΟΥ

Reverse

Tripod.

Maharajasa tratarasa Apaladatasā



SBP 2009. 4177



Name of Ruler : APOLLODOTUS-II
 Denomination : Indus-Standard Dichalkon
 Metal : AE
 Weight : 3.9 gm
 Dimension : 16.35 x 19.98 mm
 Series : Indus Greek

C.No.213

Obverse

Apollo standing three-quarters right holding a bow and arrow, quiver on back.

ΒΑΣΙΛΕΩΣ ΣΩΤΗΡΟΣ ΚΑΙ ΦΙΛΟΠΑΤΟΡΟΣ
ΑΠΟΛΛΟΔΟΤΟΥ

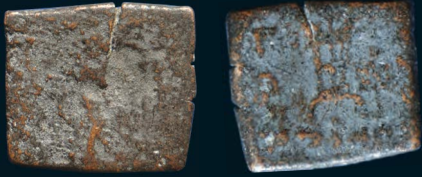
Reverse

Tripod.

Maharajasa tratarasa Apaladatasā



SBP 2009. 4225



Name of Ruler : APOLLODOTUS-II
 Denomination : Indus-Standard Dichalkon
 Metal : AE
 Weight : 3.6 gm
 Dimension : 15.51 x 17.31 mm
 Series : Indus Greek

C.No.214

Obverse

Apollo standing three-quarters right holding a bow and arrow, quiver on back.

ΒΑΣΙΛΕΩΣ ΣΩΤΗΡΟΣ ΚΑΙ ΦΙΛΟΠΑΤΟΡΟΣ
ΑΠΟΛΛΟΔΟΤΟΥ

Reverse

Tripod.

Maharajasa tratarasa Apaladatasasa



SBP 2009. 4270



Name of Ruler : APOLLODOTUS-II
 Denomination : Indus-Standard Dichalkon
 Metal : AE
 Weight : 3.5 gm
 Dimension : 15.36 x 19.08 mm
 Series : Indus Greek

C.No.215

Obverse

Apollo standing three-quarters right holding a bow and arrow, quiver on back.

ΒΑΣΙΛΕΩΣ ΣΩΤΗΡΟΣ ΚΑΙ ΦΙΛΟΠΑΤΟΡΟΣ
ΑΠΟΛΛΟΔΟΤΟΥ

Reverse

Tripod.

Maharajasa tratarasa Apaladatasasa



SBP 2009. 4271



Name of Ruler : APOLLODOTUS-II
 Denomination : Indus-Standard Dichalkon
 Metal : AE
 Weight : 4.0 gm
 Dimension : 15.33 x 15.76 mm
 Series : Indus Greek

C.No.216

Obverse

Apollo standing three-quarters right holding a bow and arrow, quiver on back.

ΒΑΣΙΛΕΩΣ ΣΩΤΗΡΟΣ ΚΑΙ ΦΙΛΟΠΑΤΟΡΟΣ
ΑΠΟΛΛΟΔΟΤΟΥ

Reverse

Tripod.

Maharajasa tratarasa Apaladatasasa



SBP 2009. 4269



Name of Ruler : APOLLODOTUS-II
 Denomination : Indus-Standard Dichalkon
 Metal : AE
 Weight : 4.1 gm
 Dimension : 14.99 x 16.96 mm
 Series : Indus Greek

C.No.217

Obverse

Apollo standing three-quarters right holding a bow and arrow, quiver on back.

ΒΑΣΙΛΕΩΣ ΣΩΤΗΡΟΣ ΚΑΙ ΦΙΛΟΠΑΤΟΡΟΣ
ΑΠΟΛΛΟΔΟΤΟΥ

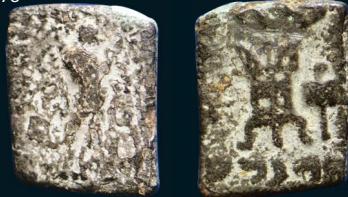
Reverse

Tripod.

Maharajasa tratarasa Apaladatasa



SBP 2009. 4278



Name of Ruler : APOLLODOTUS-II
 Denomination : Indus-Standard Dichalkon
 Metal : AE
 Weight : 4.1 gm
 Dimension : 13.89 x 17.09 mm
 Series : Indus Greek

C.No.218

Obverse

Apollo standing three-quarters right holding a bow and arrow, quiver on back.

ΒΑΣΙΛΕΩΣ ΣΩΤΗΡΟΣ ΚΑΙ ΦΙΛΟΠΑΤΟΡΟΣ
ΑΠΟΛΛΟΔΟΤΟΥ

Reverse

Tripod.

Maharajasa tratarasa Apaladatasa



SBP 2009. 4424



Name of Ruler : APOLLODOTUS-II
 Denomination : Indus-Standard Dichalkon
 Metal : AE
 Weight : 4.5gm
 Dimension : 16.18 x 18.58 mm
 Series : Indus Greek

C.No.219

Obverse

Apollo standing three-quarters right holding a bow and arrow, quiver on back.

ΒΑΣΙΛΕΩΣ ΣΩΤΗΡΟΣ ΚΑΙ ΦΙΛΟΠΑΤΟΡΟΣ
ΑΠΟΛΛΟΔΟΤΟΥ

Reverse

Tripod.

Maharajasa tratarasa Apaladatasa



SBP 2009. 4388



Name of Ruler : APOLLODOTUS-II
 Denomination : Indus-Standard Dichalkon
 Metal : AE
 Weight : 4.4 gm
 Dimension : 16.19 x 20.55 mm
 Series : Indus Greek

C.No.220

Obverse

Apollo standing three-quarters right holding a bow and arrow, quiver on back.

ΒΑΣΙΛΕΩΣ ΣΩΤΗΡΟΣ ΚΑΙ ΦΙΛΟΠΑΤΟΡΟΣ
ΑΠΟΛΛΟΔΟΤΟΥ

Reverse

Tripod.

Maharajasa tratarasa Apaladatasa



SBP 2009. 4398



Name of Ruler : APOLLODOTUS-II
 Denomination : Indus-Standard Dichalkon
 Metal : AE
 Weight : 4.6 gm
 Dimension : 16.77 x 17.12 mm
 Series : Indus Greek

C.No.221

Obverse

Apollo standing three-quarters right holding a bow and arrow, quiver on back.

ΒΑΣΙΛΕΩΣ ΣΩΤΗΡΟΣ ΚΑΙ ΦΙΛΟΠΑΤΟΡΟΣ
ΑΠΟΛΛΟΔΟΤΟΥ

Reverse

Tripod.

Maharajasa tratarasa Apaladatasa



SBP 2009. 4427



Name of Ruler : APOLLODOTUS-II
 Denomination : Indus-Standard Dichalkon
 Metal : AE
 Weight : 4.0 gm
 Dimension : 15.29 x 16.73 mm
 Series : Indus Greek

C.No.222

Obverse

Apollo standing three-quarters right holding a bow and arrow, quiver on back.

ΒΑΣΙΛΕΩΣ ΣΩΤΗΡΟΣ ΚΑΙ ΦΙΛΟΠΑΤΟΡΟΣ
ΑΠΟΛΛΟΔΟΤΟΥ

Reverse

Tripod.

Maharajasa tratarasa Apaladatasa



SBP 2009. 4428



Name of Ruler : APOLLODOTUS-II
 Denomination : Indus-Standard Dichalkon
 Metal : AE
 Weight : 3.2 gm
 Dimension : 14.18 x 15.87 mm
 Series : Indus Greek

C.No.223

Obverse

Reverse

Apollo standing three-quarters right holding a bow and arrow, quiver on back.

ΒΑΣΙΛΕΩΣ ΣΩΤΗΡΟΣ ΚΑΙ ΦΙΛΟΠΑΤΟΡΟΣ
 ΑΠΟΛΛΟΔΟΤΟΥ

Tripod.

Maharajasa tratarasa Apaladatasasa



SBP 2009. 4432



Name of Ruler : APOLLODOTUS-II
 Denomination : Indus-Standard Dichalkon
 Metal : AE
 Weight : 3.9 gm
 Dimension : 16.96 x 17.54 mm
 Series : Indus Greek

C.No.224

Obverse

Reverse

Apollo standing three-quarters right holding a bow and arrow, quiver on back.

ΒΑΣΙΛΕΩΣ ΣΩΤΗΡΟΣ ΚΑΙ ΦΙΛΟΠΑΤΟΡΟΣ
 ΑΠΟΛΛΟΔΟΤΟΥ

Tripod.

Maharajasa tratarasa Apaladatasasa



SBP 2009. 4433



Name of Ruler : APOLLODOTUS-II
 Denomination : Indus-Standard Dichalkon
 Metal : AE
 Weight : 4.3 gm
 Dimension : 14.69 x 16.20 mm
 Series : Indus Greek

C.No.225

Obverse

Reverse

Apollo standing three-quarters right holding a bow and arrow, quiver on back.

ΒΑΣΙΛΕΩΣ ΣΩΤΗΡΟΣ ΚΑΙ ΦΙΛΟΠΑΤΟΡΟΣ
 ΑΠΟΛΛΟΔΟΤΟΥ

Tripod.

Maharajasa tratarasa Apaladatasasa



SBP 2009. 4442



Name of Ruler : APOLLODOTUS-II
Denomination : Indus-Standard Dichalkon
Metal : AE
Weight : 2.8 gm
Dimension : 15.47 x 16.04 mm
Series : Indus Greek

C.No.226

Obverse

Reverse

Apollo standing three-quarters right holding a bow and arrow, quiver on back.

ΒΑΣΙΛΕΥΣ ΣΩΤΗΡΟΣ ΚΑΙ ΦΙΛΟΠΑΤΟΡΟΣ
ΑΠΟΛΛΟΔΟΤΟΥ

Tripod.

Maharajasa tratarasa Apaladatasasa



SBP 2009. 4445



Name of Ruler : APOLLODOTUS-II
Denomination : Indus-Standard Dichalkon
Metal : AE
Weight : 3.4 gm
Dimension : 14.55 x 20.59 mm
Series : Indus Greek

C.No.227

Obverse

Reverse

Apollo standing three-quarters right holding a bow and arrow, quiver on back.

ΒΑΣΙΛΕΥΣ ΣΩΤΗΡΟΣ ΚΑΙ ΦΙΛΟΠΑΤΟΡΟΣ
ΑΠΟΛΛΟΔΟΤΟΥ

Tripod.

Maharajasa tratarasa Apaladatasasa

SBP 2009. 4447



Name of Ruler : APOLLODOTUS-II
Denomination : Indus-Standard Dichalkon
Metal : AE
Weight : 6.9 gm
Dimension : 19.55 x 21.32 mm
Series : Indus Greek

C.No.228

Obverse

Reverse

Apollo standing three-quarters right holding a bow and arrow, quiver on back.

ΒΑΣΙΛΕΥΣ ΣΩΤΗΡΟΣ ΚΑΙ ΦΙΛΟΠΑΤΟΡΟΣ
ΑΠΟΛΛΟΔΟΤΟΥ

Tripod.

Maharajasa tratarasa Apaladatasasa



SBP 2009. 4479



Name of Ruler : APOLLODOTUS-II
 Denomination : Indus-Standard Dichalkon
 Metal : AE
 Weight : 4.2 gm
 Dimension : 16.65 x 19.62 mm
 Series : Indus Greek

C.No.229

Obverse

Apollo standing three-quarters right holding a bow and arrow, quiver on back.

ΒΑΣΙΛΕΩΣ ΣΩΤΗΡΟΣ ΚΑΙ ΦΙΛΟΠΑΤΟΡΟΣ
ΑΠΟΛΛΟΔΟΤΟΥ

Reverse

Tripod.

Maharajasa tratarasa Apaladatasasa



SBP 2009. 4153



Name of Ruler : APOLLODOTUS-II
 Denomination : Indus-Standard Dichalkon
 Metal : AE
 Weight : 3.4 gm
 Dimension : 15.36 x 15.83 mm
 Series : Indus Greek

C.No.230

Obverse

Apollo standing three-quarters right holding a bow and arrow, quiver on back.

ΒΑΣΙΛΕΩΣ ΣΩΤΗΡΟΣ ΚΑΙ ΦΙΛΟΠΑΤΟΡΟΣ
ΑΠΟΛΛΟΔΟΤΟΥ

Reverse

Tripod.

Maharajasa tratarasa Apaladatasasa



SBP 2009. 4499



Name of Ruler : APOLLODOTUS-II
 Denomination : Indus-Standard Dichalkon
 Metal : AE
 Weight : 4.4 gm
 Dimension : 15.10 x 16.72 mm
 Series : Indus Greek

C.No.231

Obverse

Apollo standing three-quarters right holding a bow and arrow, quiver on back.

ΒΑΣΙΛΕΩΣ ΣΩΤΗΡΟΣ ΚΑΙ ΦΙΛΟΠΑΤΟΡΟΣ
ΑΠΟΛΛΟΔΟΤΟΥ

Reverse

Tripod.

Maharajasa tratarasa Apaladatasasa

SBP 2009. 4603



Name of Ruler : APOLLODOTUS-II
 Denomination : Indus-Standard Dichalkon
 Metal : AE
 Weight : 4.1 gm
 Dimension : 16.44 x 16.18 mm
 Series : Indus Greek

C.No.232

Obverse

Reverse

Apollo standing three-quarters right holding a bow and arrow, quiver on back.

ΒΑΣΙΛΕΩΣ ΣΩΤΗΡΟΣ ΚΑΙ ΦΙΛΟΠΑΤΟΡΟΣ
 ΑΠΟΛΛΟΔΟΤΟΥ

Tripod.

Maharajasa tratarasa Apaladatasasa



SBP 2009. 4152



Name of Ruler : APOLLODOTUS-II
 Denomination : Indus-Standard Dichalkon
 Metal : AE
 Weight : 4.2 gm
 Dimension : 17.53 x 16.15 mm
 Series : Indus Greek

C.No.233

Obverse

Reverse

Apollo standing three-quarters right holding a bow and arrow, quiver on back.

ΒΑΣΙΛΕΩΣ ΣΩΤΗΡΟΣ ΚΑΙ ΦΙΛΟΠΑΤΟΡΟΣ
 ΑΠΟΛΛΟΔΟΤΟΥ

Tripod.

Maharajasa tratarasa Apaladatasasa



SBP 2009. 4151



Name of Ruler : APOLLODOTUS-II
 Denomination : Indus-Standard Dichalkon
 Metal : AE
 Weight : 4.6 gm
 Dimension : 13.46 x 18.02 mm
 Series : Indus Greek

C.No.234

Obverse

Reverse

Apollo standing three-quarters right holding a bow and arrow, quiver on back.

ΒΑΣΙΛΕΩΣ ΣΩΤΗΡΟΣ ΚΑΙ ΦΙΛΟΠΑΤΟΡΟΣ
 ΑΠΟΛΛΟΔΟΤΟΥ

Tripod.

Maharajasa tratarasa Apaladatasasa



SBP 2009. 4282



Name of Ruler : APOLLODOTUS-II
Denomination : Indus-Standard Chalkous
Metal : AE
Weight : 1.0 gm
Dimension : 13.56 x 13.70 mm
Series : Indus Greek

C.No.235

Obverse

Humped bull standing right
within rectangular border.

Reverse

Tripod, within rectangular
border.

SBP 2009. 4287



Name of Ruler : APOLLODOTUS-II
Denomination : Indus-Standard Chalkous
Metal : AE
Weight : 0.9 gm
Dimension : 11.87 x 12.85 mm
Series : Indus Greek

C.No.236

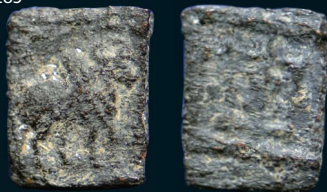
Obverse

Humped bull standing right
within rectangular border.

Reverse

Tripod, within rectangular
border.

SBP 2009. 4285



Name of Ruler : APOLLODOTUS-II
Denomination : Indus-Standard Chalkous
Metal : AE
Weight : 1.6 gm
Dimension : 10.95 x 13.71 mm
Series : Indus Greek

C.No.237

Obverse

Humped bull standing right
within rectangular border.

Reverse

Tripod, within rectangular
border.

SBP 2009. 4288



Name of Ruler : APOLLODOTUS-II
Denomination : Indus-Standard Chalkous
Metal : AE
Weight : 1.3 gm
Dimension : 12.59 x 13.98 mm
Series : Indus Greek

C.No.238

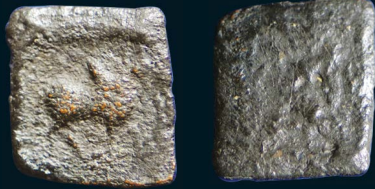
Obverse

Humped bull standing right
within rectangular border.

Reverse

Tripod, within rectangular
border.

SBP 2009. 4277



Name of Ruler : APOLLODOTUS-II
Denomination : Indus-Standard Chalkous
Metal : AE
Weight : 1.1 gm
Dimension : 11.55 x 12.70 mm
Series : Indus Greek

C.No.239

Obverse

Humped bull standing right
within rectangular border.

Reverse

Tripod, within rectangular
border.

SBP 2009. 4226



Name of Ruler : APOLLODOTUS-II
Denomination : Indus-Standard Chalkous
Metal : AE
Weight : 0.8 gm
Dimension : 12.65 x 14.11 mm
Series : Indus Greek

C.No.240

Obverse

Humped bull standing right
within rectangular border.

Reverse

Tripod, within rectangular
border.

SBP 2009. 4229



Name of Ruler : APOLLODOTUS-II
Denomination : Indus-Standard Chalkous
Metal : AE
Weight : 1.9 gm
Dimension : 14.20 x 14.60 mm
Series : Indus Greek

C.No.241

Obverse

Reverse

Humped bull standing right
within rectangular border.

Tripod, within rectangular
border.

SBP 2009. 4232



Name of Ruler : APOLLODOTUS-II
Denomination : Indus-Standard Chalkous
Metal : AE
Weight : 1.3 gm
Dimension : 13.65 x 13.71 mm
Series : Indus Greek

C.No.242

Obverse

Reverse

Humped bull standing right
within rectangular border.

Tripod, within rectangular
border.

SBP 2009. 4293



Name of Ruler : APOLLODOTUS-II
Denomination : Indus-Standard Chalkous
Metal : AE
Weight : 0.8 gm
Dimension : 11.09 x 12.98 mm
Series : Indus Greek

C.No.243

Obverse

Reverse

Humped bull standing right
within rectangular border.

Tripod, within rectangular
border.