

## Primary Income (Debit)

**Series Level Information** Current Account, Primary Income

**Title** Primary Income- Debit Transactions

**Unit** Million US Dollars

**Last update** July 21, 2020

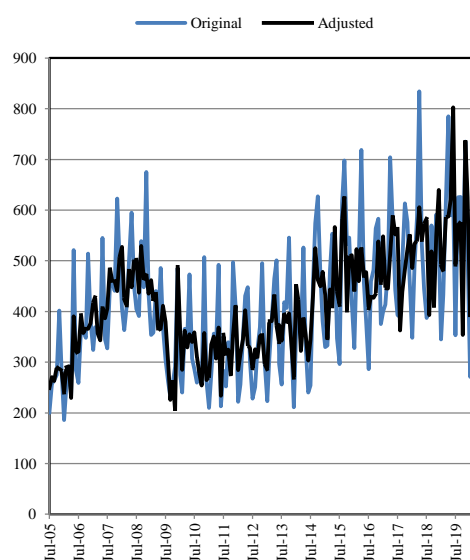
**Decimal** Zero

**Collection** Aggregated Flows

**Frequency** Monthly

**Source** State Bank of Pakistan, ITRS (Exchange Records), Exchange Companies

**Adjustments** Using X-12 ARIMA Methodology Data Adjusted for Calendar Effects Strike Days and Moving Holidays



Original Series												
Period	Jul	Aug	Sep	Oct	Nov	Dec	Jan	Feb	Mar	Apr	May	Jun
FY06	200	257	264	275	402	287	186	251	290	234	521	284
FY07	259	368	361	348	514	380	324	369	358	351	545	345
FY08	327	446	464	441	623	509	406	363	413	501	595	448
FY09	405	391	539	448	675	435	354	358	440	381	486	369
FY10	305	262	231	259	291	485	275	240	366	349	473	307
FY11	287	260	286	256	507	262	210	276	356	328	492	213
FY12	283	252	339	282	497	410	222	256	350	431	448	301
FY13	228	251	324	369	495	299	223	303	384	465	501	315
FY14	297	256	418	407	546	349	211	355	418	347	526	333
FY15	240	254	457	574	627	471	381	330	333	482	553	541
FY16	347	296	616	698	533	546	420	328	494	501	719	457
FY17	380	286	460	482	564	583	375	400	414	486	704	576
FY18	442	393	389	500	613	576	461	348	488	587	834	532
FY19	445	387	404	570	486	591	540	345	433	612	785	590
FY20	618	353	625	626	486	735	513	271	503	565	254	696

Seasonally Adjusted Series												
Period	Jul	Aug	Sep	Oct	Nov	Dec	Jan	Feb	Mar	Apr	May	Jun
FY06	249	271	263	290	287	284	239	290	292	229	390	318
FY07	321	393	358	366	366	377	418	429	357	343	409	387
FY08	405	486	458	460	440	507	527	424	410	484	448	501
FY09	502	437	529	462	474	435	462	421	436	363	366	411
FY10	380	302	226	263	204	489	358	285	362	329	355	340
FY11	359	311	277	254	358	265	271	335	351	307	369	234
FY12	354	315	325	274	354	412	284	316	345	402	334	327
FY13	286	325	308	351	355	296	285	381	381	433	372	339
FY14	374	342	396	379	396	339	268	454	422	322	388	354
FY15	304	345	432	525	463	450	478	432	345	443	407	567
FY16	438	412	580	626	401	509	511	440	523	460	526	469
FY17	477	406	430	427	434	538	456	548	446	445	513	589
FY18	552	563	363	439	482	522	552	486	533	541	606	540
FY19	573	583	393	519	408	549	640	490	479	586	588	620
FY20	803	491	570	577	353	738	625	389	466	521	185	698

Contact Person: Mr. Shamsul Arifeen, Additional Director  
 Phone No. 021-99221113  
 Email: shamsul.arifeen@sbp.org.pk  
 For Feedback: <http://www.sbp.org.pk/stats/survey/index.asp>