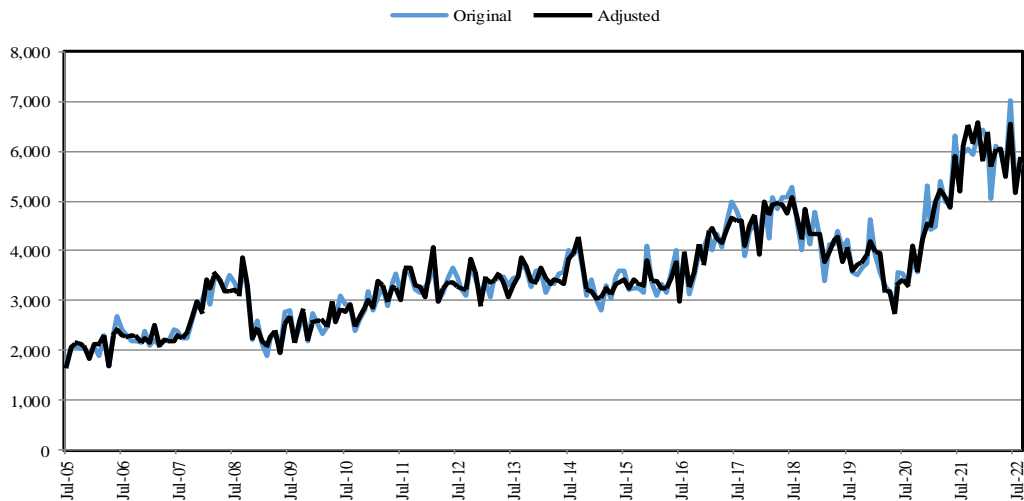


## Import of Goods

Amount in Million US\$

Original Series												
Period	Jul	Aug	Sep	Oct	Nov	Dec	Jan	Feb	Mar	Apr	May	Jun
FY06	1,767	2,074	2,058	2,045	2,049	1,951	2,063	1,879	2,297	1,674	2,352	2,684
FY07	2,408	2,302	2,196	2,197	2,154	2,391	2,099	2,218	2,103	2,175	2,204	2,426
FY08	2,399	2,256	2,252	2,593	2,948	2,966	3,318	2,910	3,520	3,384	3,237	3,499
FY09	3,366	3,158	3,694	3,227	2,225	2,594	2,138	1,875	2,249	2,359	1,994	2,786
FY10	2,815	2,183	2,470	2,747	2,184	2,736	2,533	2,341	2,474	2,914	2,633	3,102
FY11	2,920	2,925	2,392	2,613	2,805	3,191	2,791	3,074	3,288	2,904	3,350	3,543
FY12	3,172	3,673	3,522	3,230	3,172	3,276	3,366	3,712	2,984	3,158	3,452	3,653
FY13	3,446	3,232	3,098	3,742	3,425	3,117	3,402	3,077	3,392	3,441	3,468	3,317
FY14	3,458	3,468	3,715	3,617	3,265	3,594	3,596	3,159	3,354	3,329	3,531	3,582
FY15	4,021	3,932	4,092	3,570	3,100	3,409	3,015	2,799	3,294	3,045	3,470	3,610
FY16	3,596	3,222	3,257	3,254	3,152	4,101	3,357	3,086	3,321	3,168	3,577	4,027
FY17	3,119	3,916	3,125	3,482	3,940	4,082	4,327	4,021	4,348	4,072	4,583	4,986
FY18	4,799	4,530	3,884	4,395	4,515	4,297	4,930	4,260	5,066	4,846	5,075	5,074
FY19	5,290	4,606	4,008	4,680	4,142	4,776	4,285	3,407	4,118	4,135	4,384	4,038
FY20	4,222	3,556	3,497	3,648	3,762	4,629	3,931	3,581	3,310	3,144	2,805	3,560
FY21	3,534	3,343	3,821	3,557	4,225	5,302	4,412	4,476	5,392	4,975	4,934	6,302
FY22	5,371	5,967	6,057	5,930	6,339	6,431	6,203	5,039	6,117	5,997	5,559	7,033
FY23	5,348	5,750										

Seasonally Adjusted Series												
Period	Jul	Aug	Sep	Oct	Nov	Dec	Jan	Feb	Mar	Apr	May	Jun
FY06	1,696	2,053	2,167	2,112	2,053	1,819	2,129	2,126	2,294	1,693	2,333	2,422
FY07	2,310	2,278	2,311	2,266	2,162	2,233	2,166	2,495	2,106	2,204	2,182	2,195
FY08	2,302	2,230	2,368	2,669	2,966	2,777	3,420	3,256	3,530	3,437	3,195	3,179
FY09	3,225	3,123	3,875	3,316	2,247	2,436	2,198	2,090	2,258	2,400	1,962	2,540
FY10	2,691	2,163	2,583	2,818	2,218	2,574	2,599	2,599	2,486	2,968	2,581	2,842
FY11	2,783	2,911	2,489	2,677	2,867	3,005	2,857	3,398	3,297	2,966	3,269	3,260
FY12	3,021	3,668	3,654	3,307	3,266	3,080	3,441	4,084	2,986	3,235	3,351	3,378
FY13	3,285	3,232	3,217	3,825	3,542	2,927	3,465	3,374	3,384	3,538	3,353	3,080
FY14	3,304	3,469	3,871	3,690	3,392	3,366	3,648	3,464	3,333	3,430	3,400	3,341
FY15	3,841	3,942	4,275	3,643	3,230	3,184	3,047	3,079	3,254	3,138	3,335	3,374
FY16	3,433	3,244	3,415	3,324	3,298	3,804	3,387	3,408	3,258	3,258	3,441	3,770
FY17	2,975	3,965	3,280	3,571	4,126	3,762	4,367	4,447	4,241	4,174	4,425	4,661
FY18	4,590	4,600	4,095	4,521	4,726	3,931	4,983	4,711	4,915	4,956	4,921	4,742
FY19	5,068	4,683	4,246	4,830	4,324	4,348	4,333	3,767	3,983	4,217	4,267	3,768
FY20	4,055	3,612	3,731	3,772	3,916	4,198	3,973	3,963	3,194	3,197	2,741	3,320
FY21	3,421	3,291	4,116	3,607	4,222	4,535	4,472	4,981	5,212	5,065	4,865	5,895
FY22	5,198	6,095	6,519	6,160	6,572	5,800	6,386	5,699	6,005	6,062	5,480	6,539
FY23	5,153	5,856										



Contact Person: Syed Kamran Najam, Sr. Joint Director  
 Phone No: 021-99221468  
 Email: [feedback.statistics@sbp.org.pk](mailto:feedback.statistics@sbp.org.pk)