

Top movers in SPI basket during week V of August 2019

Year on Year (YoY) basis

Top ten commodities registered increase(percent)							
Sr. No	Items	Unit	Weights	Current Price	Percentage change in		
					Current week	Prev. week	Corr. week
					29-Aug-19	22-Aug-19	30-Aug-18
1	Garlic	Kg	0.36	252.23	101.48	105.98	-35.78
2	Gas Charges Up To 3.3719	Mmbtu	4.12	246.29	91.37	91.37	0.00
3	Chicken Live (Farm)	Kg	3.56	186.29	67.86	65.22	-14.16
4	Onions	Kg	1.42	64.42	67.80	65.68	-39.62
5	Cigarettes K-2	20'S	1.59	76.24	49.84	48.96	0.24
6	Moong Pulse Washed	Kg	0.61	170.21	48.77	49.69	-7.42
7	Sugar	Kg	2.73	76.12	37.72	36.97	0.82
8	Gur	Kg	0.06	112.52	32.69	34.64	0.20
9	Long Cloth, 57", Gul Ahmed/Al-Kara	Mtr	1.85	306.32	32.14	32.14	9.19
10	Mash Pulse Washed	Kg	0.55	181.66	25.48	24.88	-21.80

Top commodities registered decrease (percent)							
Sr. No	Items	Unit	Weights	Current Price	Percentage change in		
					Current week	Prev. week	Corr. week
					29-Aug-19	22-Aug-19	30-Aug-18
1	L.P.G.(11 Kg Cylinder)	Each	0.27	1248.24	-24.99	-17.08	46.62

Week on Week (WoW) basis

Top ten commodities registered increase (percent)									
Sr. No	Items	Unit	Weights	Current Price	Percentage change in			Impact in % points	
					Current week	Prev. week	Corr. week	Current week	
					29-Aug-19	22-Aug-19	30-Aug-18	29-Aug-19	
1	Veg.Ghee Loose	Kg	2.71	182.88	1.63	0.90	0.03	0.0270	
2	Bread Plain Mid.Size (340-400 Gm)	Each	1.23	48.82	1.20	2.01	0.68	0.0142	
3	Curd	Kg	1.35	109.21	0.95	0.11	0.00	0.0143	
4	Washing Soap 200-250 Gm	Cake	0.77	33.35	0.88	2.38	0.00	0.0084	
5	Wheat Flour Bag Avg. Qlt.	10 Kg	10.90	429.34	0.86	0.33	-0.06	0.0805	
6	Wheat	10 Kg	0.91	364.24	0.63	0.42	-0.09	0.0045	
7	Veg. Ghee (Tin)	2.5 Kg	2.71	542.35	0.49	0.33	0.00	0.0084	
8	Gur	Kg	0.06	112.52	0.46	0.62	1.94	0.0003	
9	Cooking Oil (Tin)	2.5 Ltr	2.30	567.71	0.40	0.37	0.00	0.0060	
10	Milk Fresh	Ltr	16.84	93.05	0.35	0.04	0.00	0.0651	

Top ten commodities registered decrease (percent)									
Sr. No	Items	Unit	Weights	Current Price	Percentage change in			Impact in % points	
					Current week	Prev. week	Corr. week	Current week	
					29-Aug-19	22-Aug-19	30-Aug-18	29-Aug-19	
1	Onions	Kg	1.42	64.42	-7.34	5.17	-8.51	-0.1634	
2	Bananas	Doz	1.39	73.30	-6.12	0.13	-1.66	-0.0691	
3	Tomatoes	Kg	1.18	49.93	-4.05	-8.85	-32.77	-0.0321	
4	Chicken Live (Farm)	Kg	3.56	186.29	-3.79	-7.93	-5.30	-0.1151	
5	Garlic	Kg	0.36	252.23	-1.72	-0.93	0.47	-0.0127	
6	Potatoes	Kg	1.25	40.87	-1.47	-0.43	1.09	-0.0184	
7	Masoor Pulse Washed	Kg	0.49	125.18	-0.41	-0.13	0.00	-0.0013	
8	Egg Hen (Farm)	Doz	1.19	97.93	-0.27	0.51	-0.69	-0.0024	
9	Moong Pulse Washed	Kg	0.61	170.21	-0.11	-0.04	0.51	-0.0008	
10	Sugar	Kg	2.73	76.12	-0.07	0.62	-0.61	-0.0018	

Domestic Commodity Prices (in Rupees)						Percentage change over		
Items	Unit	30-Aug-18	1-Aug-19	22-Aug-19	29-Aug-19	Previous week	Previous month	Previous year
Weekly SPI Index (Combined)		227.17	267.02	271.83	271.33	-0.2	1.6	19.4
Wheat	10 Kg	332.50	361.20	361.96	364.24	0.6	0.8	9.5
Wheat Flour Bag Avg. Qlt.	10 Kg	385.50	421.88	425.67	429.34	0.9	1.8	11.4
Rice Basmati Broken	Kg	76.61	81.31	81.46	81.46	0.0	0.2	6.3
Rice Irri-6/9	Kg	54.47	60.34	60.46	60.43	0.0	0.1	10.9
Mash Pulse Washed	Kg	144.77	178.72	181.47	181.66	0.1	1.6	25.5
Gram Pulse Washed	Kg	119.11	129.47	130.98	131.35	0.3	1.5	10.3
Beef	Kg	375.29	419.18	419.70	419.70	0.0	0.1	11.8
Mutton	Kg	783.67	865.25	868.30	868.30	0.0	0.4	10.8
Chicken Live (Farm)	Kg	110.98	148.70	193.62	186.29	-3.8	25.3	67.9
Egg Hen (Farm)	Doz	95.94	96.00	98.20	97.93	-0.3	2.0	2.1
Sugar	Kg	55.27	73.77	76.17	76.12	-0.1	3.2	37.7
Gur	Kg	84.80	108.86	112.01	112.52	0.5	3.4	32.7
Milk Fresh	Ltr	85.46	92.53	92.73	93.05	0.3	0.6	8.9
Veg. Ghee (Tin)	2.5 Kg	473.94	528.82	539.71	542.35	0.5	2.6	14.4
Cooking Oil (Tin)	2.5 Ltr	480.00	551.35	565.47	567.71	0.4	3.0	18.3
Tea Packet (Yellow Label)	200 Gm	204.05	219.51	219.51	219.51	0.0	0.0	7.6
Kerosene	Ltr	122.37	134.03	134.15	134.15	0.0	0.1	9.6
Gas Charges Up To 3.3719	Mmbtu	128.70	246.29	246.29	246.29	0.0	0.0	91.4
L.P.G.(11 Kg Cylinder)	Each	1664.12	1246.70	1248.93	1248.24	-0.1	0.1	-25.0
Elec.Chrg. 1-50	Unit	2.00	2.00	2.00	2.00	0.0	0.0	0.0
Petrol	Ltr	96.22	118.91	118.91	118.91	0.0	0.0	23.6
Diesel	Ltr	113.92	133.51	133.51	133.51	0.0	0.0	17.2
Urea Sona	50 Kg bag	1648.00	1885.00	1875.00	1874.00	-0.1	-0.6	13.7
DAP	50 Kg bag	3385.00	3591.00	3655.00	3654.00	0.0	1.8	7.9
Cement	50 Kg bag	578.00	587.00	578.00	573.00	-0.9	-2.4	-0.9
Furnace Oil*	Metric ton	80811.90	97069.05	97069.05	97069.05	0.0	0.0	20.1
Cotton [®]	Maund (37.32 Kg)	8160.00	8560.00	8060.00	8160.00	1.2	-4.7	0.0
Gold 24 ct [®]	10 Gm	48954.00	71245.00	75360.00	77160.00	2.4	8.3	57.6

Source:

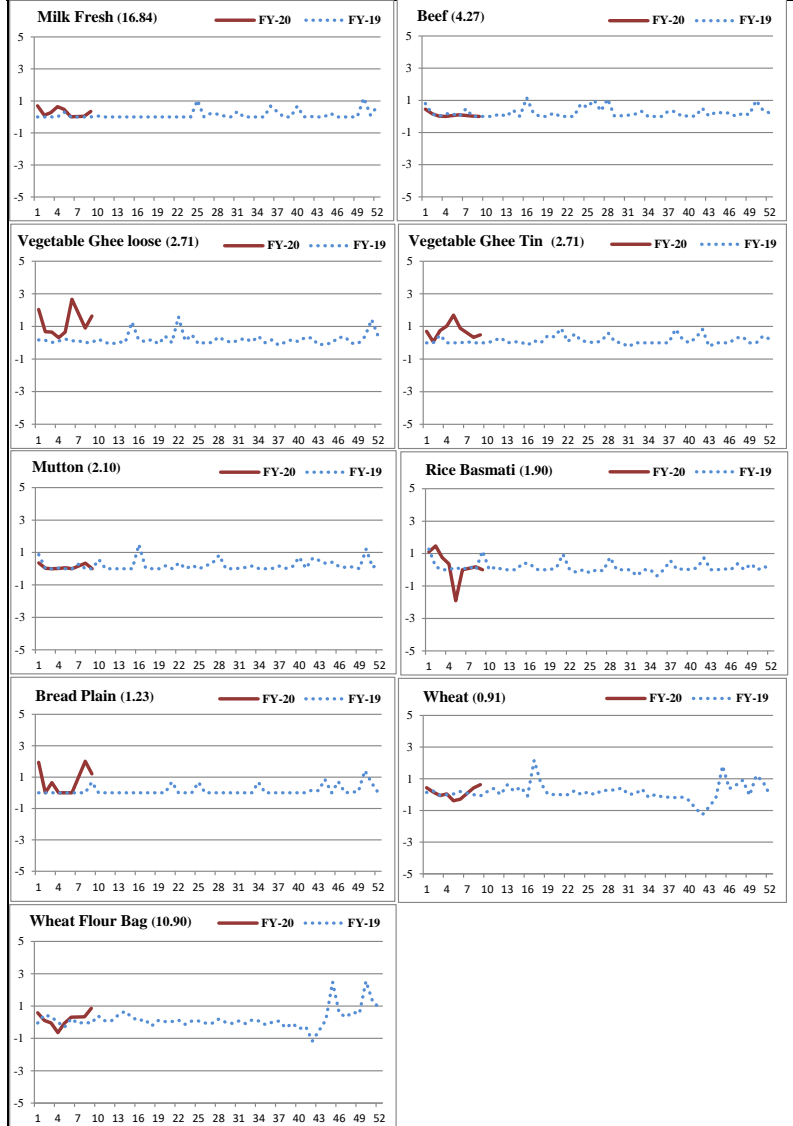
Pakistan Bureau of Statistics

*Pakistan State Oil (www.psopk.com)

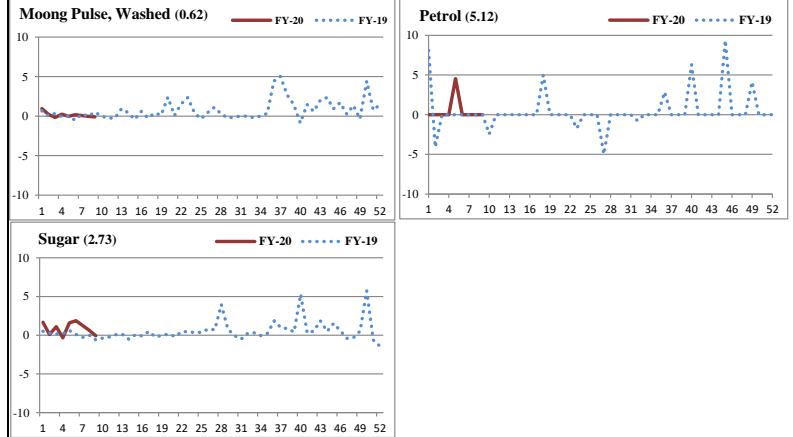
[®]Business Recorder (www.brecorder.com)

Trend of Top 25 SPI Items (Weight Wise)														
Sr. No.	Item	Unit	Weight	Prices Weekly			YoY% Change			YoY% Change Direction	WoW% Change			WoW% Change Direction
				30-Aug-18	22-Aug-19	29-Aug-19	30-Aug-18	22-Aug-19	29-Aug-19		30-Aug-18	22-Aug-19	29-Aug-19	
1	Milk Fresh	Ltr	16.84	85.46	92.73	93.05	4.33	8.51	8.88	↑	0.00	0.04	0.35	↑
2	Elec.Chrg. 1-50	Unit	11.51	2.00	2.00	2.00	0.00	0.00	0.00	→	0.00	0.00	0.00	→
3	Wheat Flour Bag Av. Qlt.	10 Kg	10.90	385.50	425.67	429.34	7.07	10.35	11.37	↑	-0.06	0.33	0.86	↑
4	Petrol	Ltr	5.12	96.22	118.91	118.91	36.93	23.58	23.58	↓	0.00	0.00	0.00	→
5	Beef	Kg	4.27	375.29	419.70	419.70	9.66	11.83	11.83	↑	0.00	0.01	0.00	↓
6	Gas Charges Up To 3.3719	Mmbtu	4.12	128.70	246.29	246.29	0.00	91.37	91.37	↑	0.00	0.00	0.00	→
7	Chicken Live (Farm)	Kg	3.56	110.98	193.62	186.29	-14.16	65.22	67.86	↑	-5.30	-7.93	-3.79	↑
8	Sugar	Kg	2.73	55.27	76.17	76.12	0.82	36.97	37.72	↑	-0.61	0.62	-0.07	↓
9	Veg. Ghee (Tin)	2.5 Kg	2.71	473.94	539.71	542.35	2.25	13.88	14.43	↑	0.00	0.33	0.49	↑
10	Veg.Ghee Loose	Kg	2.71	150.36	179.94	182.88	3.38	19.70	21.63	↑	0.03	0.90	1.63	↑
11	Cooking Oil (Tin)	2.5 Ltr	2.30	480.00	565.47	567.71	1.94	17.81	18.27	↑	0.00	0.37	0.40	↑
12	Tea Packet (Yellow Lable)	200 Gm	2.15	204.05	219.51	219.51	10.25	7.93	7.58	↓	0.32	0.00	0.00	→
13	Mutton	Kg	2.10	783.67	868.30	868.30	10.42	10.80	10.80	↑	0.00	0.34	0.00	↓
14	Rice Basmati Broken	Kg	1.90	76.61	81.46	81.46	9.02	7.57	6.33	↓	1.16	0.18	0.00	↓
15	Long Cloth (Coarse Latha)	Mtr	1.85	231.81	306.32	306.32	9.19	32.14	32.14	↑	0.00	0.00	0.00	→
16	Cigarettes K-2	20'S	1.59	50.88	76.24	76.24	0.24	48.96	49.84	↑	-0.59	0.00	0.00	↓
17	Lawn	Mtr	1.47	287.59	348.52	348.52	12.44	21.19	21.19	↑	0.00	0.00	0.00	→
18	Onions	Kg	1.42	38.39	69.52	64.42	-39.62	65.68	67.80	↑	-8.51	5.17	-7.34	↓
19	Bananas	Doz	1.39	72.14	78.08	73.30	-1.77	6.43	1.61	↑	-1.66	0.13	-6.12	↓
20	Curd	Kg	1.35	101.97	108.18	109.21	3.99	6.09	7.10	↑	0.00	0.11	0.95	↑
21	Tele. Local Call	Each	1.31	3.94	4.65	4.65	0.00	18.02	18.02	↑	0.00	0.00	0.00	→
22	Potatoes	Kg	1.25	33.28	41.48	40.87	-18.13	26.00	22.81	↑	1.09	-0.43	-1.47	↓
23	Bread Plain Mid.Size (340-400 Gr)	Each	1.23	42.85	48.24	48.82	4.21	13.35	13.93	↑	0.68	2.01	1.20	↓
24	Egg Hen (Farm)	Doz	1.19	95.94	98.20	97.93	-2.25	1.65	2.07	↑	-0.69	0.51	-0.27	↓
25	Tomatoes	Kg	1.18	47.05	52.04	49.93	-39.35	-25.64	6.12	↑	-32.77	-8.85	-4.05	↑

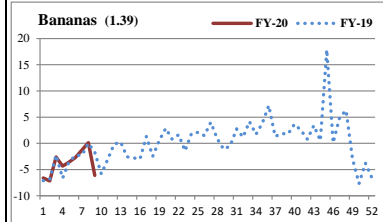
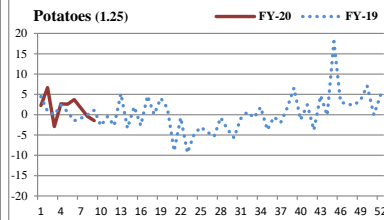
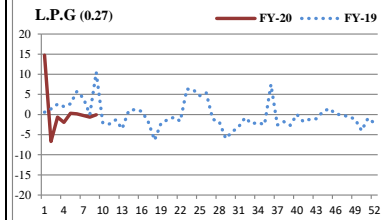
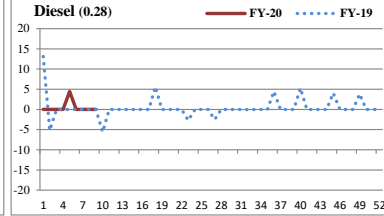
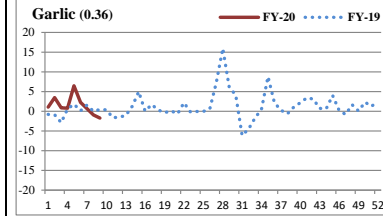
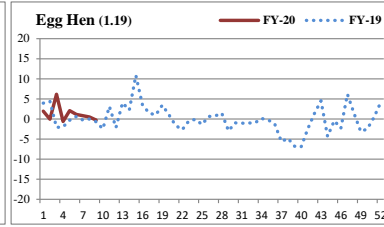
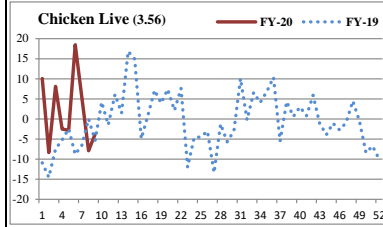
Weekly Trend in Major SPI Items (-5 to +5)%



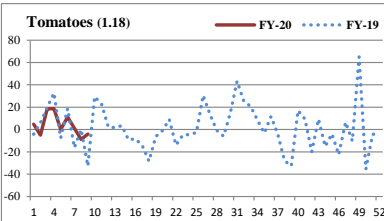
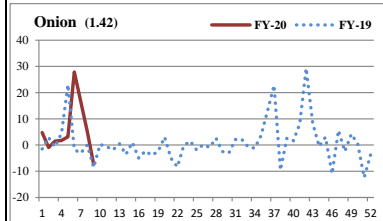
Weekly Trend in Major SPI Items (-10 to +10)%



Weekly Trend in Major SPI Items (-20 to +20)%



Weekly Trend in Major SPI Items (Beyond ± 20%)



Global Commodity Indices and Prices						Percentage change over		
Items	Unit	31-Aug-18	2-Aug-19	23-Aug-19	30-Aug-19	Previous week	Previous month	Previous year
S&P GSCI Commodity Index*		468.7	407.7	393.4	397.1	0.9	-2.6	-15.3
Bloomberg Commodity Index (BCOM)**		83.7	77.1	76.1	77.0	1.2	-0.1	-8.0
Energy (S&P Index)		239.9	193.4	185.2	187.7	1.3	-2.9	-21.7
Crude Oil (S&P Index)		382.6	305.1	296.9	302.0	1.7	-1.0	-21.1
NYMEX WTI (Sep 19)	US\$/barrel	69.4	55.7	54.2	55.1	1.7	-1.0	-20.6
ICE Brent (Oct 19)	US\$/barrel	77.6	61.9	59.3	60.4	1.8	-2.4	-22.2
Dubai Spot (Index)	US\$/barrel	75.2	60.8	58.7	59.6	1.5	-1.9	-20.7
Arab Light Spot Asia (Index)	US\$/barrel	77.3	63.6	61.5	62.6	1.7	-1.7	-19.0
Coal (DJ US Total Market Index)		74.9	33.9	32.3	34.0	5.2	0.1	-54.6
Coal (US)	US\$/MT	56.5	49.3	49.8	49.8	0.0	1.0	-11.8
Natural Gas (S&P Index)		136.5	99.3	101.0	107.0	6.0	7.7	-21.6
Natural Gas (Aug 19)	US\$/MMBTU	2.9	2.1	2.2	2.3	4.6	6.1	-23.4
Industrial metals (S&P Index)		340.2	314.1	314.6	317.5	0.9	1.1	-6.7
Aluminum (LME, 3m future)	US\$/MT	2125.0	1770.0	1770.0	1753.0	-1.0	-1.0	-17.5
Copper (LME, 3m future)	US\$/MT	5975.0	5729.5	5633.0	5676.0	0.8	-0.9	-5.0
Lead (LME, 3m future)	US\$/MT	2078.0	1952.0	2068.0	2017.0	-2.5	3.3	-2.9
Nickel (LME, 3m future)	US\$/MT	12800.0	14450.0	15660.0	17900.0	14.3	23.9	39.8
Tin (LME, 3m future)	US\$/MT	18990.0	16980.0	15880.0	16350.0	3.0	-3.7	-13.9
Zinc (LME, 3m future)	US\$/MT	2457.0	2350.0	2254.0	2205.0	-2.2	-6.2	-10.3
HR Coil Steel US (Aug 19)	US\$/MT	827.0	602.0	584.0	586.0	0.3	-2.7	-29.1
Precious metals (S&P Index)		1569.2	1881.6	1989.1	1987.7	-0.1	5.6	26.7
Gold (Spot)	US\$/Troy Ounce	1201.4	1440.6	1527.0	1520.3	-0.4	5.5	26.5
Platinum (Spot)	US\$/Troy Ounce	787.5	844.9	857.7	933.6	8.9	10.5	18.6
Silver (Spot)	US\$/Troy Ounce	14.5	16.2	17.4	18.4	5.5	13.4	26.4
Agriculture (S&P Index)		286.1	278.4	266.3	265.1	-0.5	-4.8	-7.3
Cotton (NYB-ICE, Dec 19)	US cents/pounds	82.3	59.4	58.2	58.8	1.1	-1.0	-28.5
Sugar (LIF, Oct 19)	US\$/MT	251.8	323.7	310.4	301.6	-2.8	-6.8	19.8
Corn (CBOT, Sep 19)	US\$/MT	143.7	157.3	141.6	140.9	-0.5	-10.4	-1.9
Rice (CBOT, Sep 19)	US\$/MT	238.8	258.1	242.1	257.3	6.3	-0.3	7.8
Wheat (CBOT, Sep 19)	US\$/MT	200.4	180.3	174.6	165.8	-5.0	-8.0	-17.3
Soybeans (CBOT, Sep 19)	US\$/MT	309.9	314.4	309.8	314.9	1.6	0.1	1.6
Palm oil (Bursa Malaysia, Sep 19)	US\$/MT	576.6	485.9	527.3	515.6	-2.2	6.1	-10.6
Others								
Urea Granular (US Gulf)	US\$/MT	295.0	260.0	251.0	257.0	2.4	-1.2	-12.9
DAP (US Gulf)	US\$/MT	439.0	332.0	326.0	326.0	0.0	-1.8	-25.7

Source: Bloomberg

LME: London Metal Exchange, CBOT: Chicago Board of Trade, NYMEX : New York Mercantile Exchange, DJ:Dow Jones

* The S&P GSCI(standard&poor's Goldman sachs commodity Index) is widely recognized as a leading measure of general price movements and inflation in the world economy.

It provides investors with a reliable and publicly available benchmark for investment performance in the commodity markets.

**Bloomberg Commodity Index(BCOM) reflects commodity futures price movements

