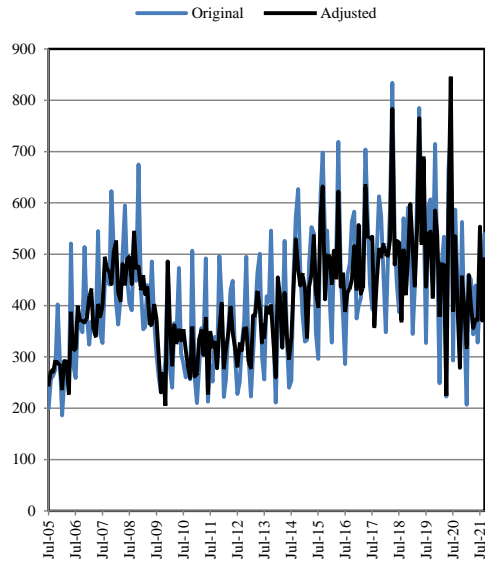


Primary Income (Debit)

Series Level Information	Current Account, Primary Income
Title	Primary Income- Debit Transactions
Unit	Million US Dollars
Last update	November 22, 2021
Decimal	Zero
Collection	Aggregated Flows
Frequency	Monthly
Source	State Bank of Pakistan, ITRS (Exchange Records), Exchange Companies
Adjustments	Using X-12 ARIMA Methodology Data Adjusted for Calendar Effects Strike Days and Moving Holidays



Original Series												
Period	Jul	Aug	Sep	Oct	Nov	Dec	Jan	Feb	Mar	Apr	May	Jun
FY06	200	257	264	275	402	287	186	251	290	234	521	284
FY07	259	368	361	348	514	380	324	369	358	351	545	345
FY08	327	446	464	441	623	509	406	363	413	501	595	448
FY09	405	391	539	448	675	435	354	358	440	381	486	369
FY10	305	262	231	259	291	485	275	240	366	349	473	307
FY11	287	260	286	256	507	262	210	276	356	328	492	213
FY12	283	252	339	282	497	410	222	256	350	431	448	301
FY13	228	251	324	369	495	299	223	303	384	465	501	315
FY14	297	256	418	407	546	349	211	355	418	347	526	333
FY15	240	254	457	574	627	471	381	330	333	482	553	541
FY16	347	296	616	698	533	546	420	328	494	501	719	457
FY17	380	286	460	482	564	583	375	400	414	486	704	576
FY18	442	393	389	500	613	576	461	348	488	587	834	532
FY19	445	387	404	570	486	591	540	345	433	612	785	590
FY20	592	327	592	607	467	715	490	249	479	534	223	663
FY21	739	293	587	440	307	563	363	207	460	451	344	439
FY22	328	419	408	539								

Seasonally Adjusted Series												
Period	Jul	Aug	Sep	Oct	Nov	Dec	Jan	Feb	Mar	Apr	May	Jun
FY06	246	274	271	293	288	284	238	292	291	228	385	312
FY07	316	399	370	370	367	376	416	431	355	340	403	379
FY08	399	493	471	467	442	505	524	426	409	481	442	491
FY09	495	442	544	471	476	433	459	422	434	361	363	403
FY10	374	305	231	268	205	486	354	285	362	327	355	332
FY11	354	314	283	259	359	262	267	334	351	304	375	228
FY12	349	317	331	278	354	405	279	315	346	398	347	318
FY13	281	325	313	355	356	290	279	381	381	428	396	328
FY14	365	337	399	383	400	333	260	455	419	318	425	339
FY15	295	338	432	529	471	439	460	434	339	437	461	535
FY16	426	398	576	632	412	498	496	443	507	452	622	437
FY17	462	388	426	433	451	516	432	557	423	437	634	534
FY18	531	534	358	446	510	495	519	500	497	528	783	480
FY19	526	523	369	509	421	494	598	513	438	550	765	521
FY20	688	437	540	544	415	585	538	378	482	479	224	574
FY21	846	389	535	398	279	455	395	319	459	401	356	373
FY22	372	554	371	490								

Contact Person: Mr. Shamsul Arifeen, Additional Director
 Phone No. 021-99221113
 Email: shamsul.arifeen@sbp.org.pk