

Current Account (Credit)

Series Level Information BOP - Current Account

Title Current Account- Credit Transactions

Unit Million US Dollars

Last update November 22, 2021

Decimal Zero

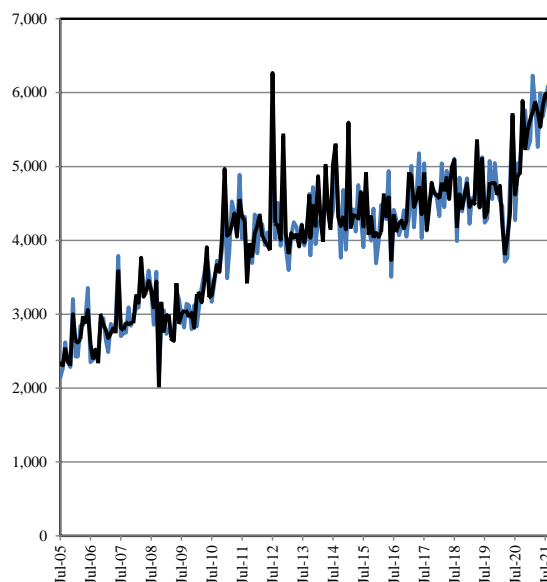
Collection Aggregated Flows

Frequency Monthly

Source State Bank of Pakistan, ITRS (Exchange Records), Exchange Companies, EAD, Ministry of Finance, Pakistani/Foreign Airlines & Shipping Companies etc.

Adjustments Using X-12 ARIMA Methodology Data Adjusted for Calendar Effects Strike Days and Moving Holidays

— Original — Adjusted



Original Series												
Period	Jul	Aug	Sep	Oct	Nov	Dec	Jan	Feb	Mar	Apr	May	Jun
FY06	2,141	2,269	2,621	2,347	2,285	3,206	2,428	2,426	2,844	2,851	2,975	3,358
FY07	2,352	2,383	2,515	2,455	2,903	2,946	2,644	2,486	2,871	2,763	2,899	3,789
FY08	2,701	2,739	2,752	3,094	2,844	2,936	3,088	3,092	3,713	3,360	3,334	3,590
FY09	3,323	2,859	3,577	2,163	2,858	3,053	2,733	2,795	2,770	2,693	3,318	3,201
FY10	2,959	2,819	3,143	3,120	2,797	3,124	2,834	3,109	3,365	3,555	3,760	3,541
FY11	3,169	3,423	3,725	3,597	3,877	4,712	3,488	3,838	4,526	4,373	4,076	4,889
FY12	4,024	4,321	3,545	3,932	3,691	4,351	3,824	4,210	4,216	3,936	4,106	4,088
FY13	3,892	5,191	4,018	4,509	3,925	4,737	3,891	3,597	4,065	4,246	4,177	3,949
FY14	4,219	3,931	4,070	4,629	3,796	4,721	3,950	4,260	4,244	4,149	4,645	4,539
FY15	4,228	4,409	5,149	4,543	3,765	4,683	3,874	4,606	4,351	4,420	4,119	4,750
FY16	4,321	3,909	4,690	4,179	3,995	4,430	3,688	3,977	4,479	4,349	4,287	4,938
FY17	3,505	4,414	4,282	4,070	4,180	4,408	4,050	4,329	5,009	4,177	4,614	5,180
FY18	4,031	5,043	4,131	4,519	4,622	4,672	4,569	4,328	5,043	4,449	4,943	4,795
FY19	4,889	5,106	3,990	4,849	4,393	4,601	4,842	4,224	4,573	4,527	5,341	4,456
FY20	5,124	4,239	4,292	5,074	4,558	5,047	4,654	4,541	4,468	3,712	3,766	4,779
FY21	5,685	4,274	5,043	5,039	5,510	5,762	5,241	5,352	6,231	5,834	5,263	5,993
FY22	5,676	5,846	6,088	5,756								

Seasonally Adjusted Series												
Period	Jul	Aug	Sep	Oct	Nov	Dec	Jan	Feb	Mar	Apr	May	Jun
FY06	2,333	2,306	2,540	2,362	2,316	3,000	2,639	2,616	2,664	2,971	2,877	3,056
FY07	2,605	2,388	2,523	2,343	2,986	2,864	2,785	2,678	2,742	2,809	2,767	3,596
FY08	2,816	2,782	2,891	2,868	2,881	2,891	3,251	3,154	3,764	3,236	3,297	3,453
FY09	3,324	3,079	3,444	2,018	3,165	2,773	2,984	2,992	2,663	2,640	3,421	2,881
FY10	3,001	3,052	3,039	2,959	3,020	2,817	3,261	3,289	3,160	3,424	3,906	3,228
FY11	3,258	3,483	3,668	3,572	4,051	4,967	4,061	4,088	4,204	4,363	4,049	4,553
FY12	4,322	4,266	3,420	3,959	3,786	4,093	4,199	4,348	4,063	3,991	3,939	3,868
FY13	3,986	6,266	4,223	4,203	4,009	5,427	4,085	3,818	4,096	4,033	4,091	3,916
FY14	4,204	3,970	4,164	4,613	4,035	4,470	4,191	4,869	4,319	3,982	5,020	4,380
FY15	4,155	5,038	5,305	4,320	4,195	4,324	4,148	5,592	4,172	4,340	4,328	4,297
FY16	4,655	4,179	4,913	4,077	4,320	4,037	4,099	4,048	4,121	4,609	4,324	4,598
FY17	3,735	4,348	4,128	4,225	4,269	4,165	4,255	4,916	4,874	4,453	4,562	4,724
FY18	4,353	4,918	4,142	4,429	4,781	4,621	4,618	4,564	4,779	4,670	4,851	4,558
FY19	4,994	5,088	4,190	4,621	4,434	4,606	4,770	4,453	4,530	4,500	5,357	4,444
FY20	5,110	4,311	4,388	4,772	4,777	4,774	4,615	4,738	4,222	3,810	4,042	4,362
FY21	5,708	4,620	4,878	4,910	5,886	5,239	5,503	5,639	5,736	5,877	5,731	5,536
FY22	5,811	5,978	5,992	5,624								

Note: Before analysing data, "Logistic Support" and "grants for budgetry support" are subtracted from Current Account Cr.