

6.1 Government of Pakistan Treasury Bills

Million Rupees

	Jun-18	Jun-19	2018		2019					
			Jul	Aug	Apr	May	Jun	Jul	Aug	
3 Months Treasury Bills										
Issue	1,368,012	134,468	3,531,887	1,031,774	1,066,820	3,726,239	134,468	2,111,839	2,104,299	
Discount Allowed	21,164	3,793	61,980	18,392	26,933	105,703	3,793	66,168	66,146	
Discharged	73,207	25,520	3,308,876	1,814,575	384,877	2,614,650	25,520	1,066,820	3,834,080	
Discount Paid	1,054	619	47,412	27,527	9,124	63,373	619	26,933	108,715	
Outstanding Balance	5,179,920	4,927,527	5,402,931	4,620,130	3,706,990	4,818,579	4,927,527	5,972,546	4,242,765	
6 Months Treasury Bills										
Issue	2,262	-	1,035	-	593	1,669	-	135,227	40,000	
Discount Allowed	77	-	41	-	33	106	-	9,337	2,780	
Discharged	77,954	668	-	-	3,113	-	668	-	1,425	
Discount Paid	2,336	34	-	-	137	-	34	-	75	
Outstanding Balance	70,472	3,687	71,507	71,507	2,685	4,355	3,687	138,914	177,489	
12 Months Treasury Bills										
Issue	-	443	-	-	-	-	443	98,903	660,228	
Discount Allowed	-	57	-	-	-	-	57	13,825	93,393	
Discharged	5,653	-	16,251	19,178	-	-	-	-	-	
Discount Paid	341	-	979	1,155	-	-	-	-	-	
Outstanding Balance	44,979	443	28,728	9,549	-	-	443	99,346	759,574	

Source: Domestic Markets & Monetary Management Department SBP

Note: Six months Government of Pakistan Treasury Bills restarted w. e. f. June 1998 and 3 & 12 Months Government of Pakistan Treasury Bills restarted w.e.f July 1998.

6.2 Sale / Purchase of Treasury Bills under Open Market Operation by SBP with Banks

SALE

(Billion Rupees)

PERIODS	2015-16		2016-17		2017-18		2018-19		2019-20	
	Bid Amount		Bid Amount		Bid Amount		Bid Amount		Bid Amount	
	Offered	Accepted	Offered	Accepted	Offered	Accepted	Offered	Accepted	Offered	Accepted
July	169.5	169.5	-	-	-	-	1,330.5	1,272.5	310.8	308.8
August	-	-	138.0	109.0	-	-	894.3	894.3	-	-
September	54.5	21.0	-	-	63.0	38.0	235.3	235.3		
October	41.5	28.0	179.7	95.5	113.8	105.0	2,478.3	2,225.7		
November	-	-	-	-	91.5	84.5	6,659.7	6,630.6		
December	63.3	43.0	178.7	150.0	-	-	2,319.5	2,319.5		
January	-	-	-	-	343.0	305.1	9,265.4	8,929.1		
February	-	-	59.0	20.9	-	-	5,226.9	5,200.8		
March	121.0	95.1	-	-	786.8	641.5	3,359.3	3,354.3		
April	116.9	61.9	-	-	165.9	123.3	3,257.3	3,163.8		
May	120.5	83.6	-	-	136.5	100.0	5,781.2	5,777.6		
June	66.8	44.3	51.6	40.0	-	-	111.0	105.0		
Average										
per month	62.8	45.5	50.6	34.6	141.7	116.4	3,409.9	3,342.4	155.4	154.4
per day	2.1	1.5	1.7	1.2	4.7	3.9	113.7	111.4	5.2	5.1

PURCHASE

PERIODS	2015-16		2016-17		2017-18		2018-19		2019-20	
	Amount		Amount		Amount		Amount		Amount	
	Offered	Injected	Offered	Injected	Offered	Injected	Offered	Injected	Offered	Injected
July	4,335.1	4,200.5	6,965.6	6,655.1	6,181.3	5,797.7	3,608.3	2,906.8	4,687.7	4,374.4
August	4,637.3	4,553.5	3,951.0	3,873.5	6,066.4	5,940.3	8,370.5	8,249.2	8,269.7	7,999.3
September	6,602.8	5,818.4	6,206.9	5,870.9	7,881.6	7,733.5	1,959.3	1,670.0		
October	7,058.8	6,668.1	4,024.4	3,960.4	6,245.0	5,968.4	99.5	71.0		
November	5,432.5	5,318.9	3,242.3	3,096.9	6,454.0	6,252.5	-	-		
December	6,465.0	6,121.8	4,551.0	4,234.6	8,943.3	8,590.5	6,569.7	5,555.1		
January	4,863.4	4,598.6	4,099.7	3,878.5	4,612.4	4,390.3	-	-		
February	5,585.2	5,253.8	4,127.9	3,953.7	5,946.7	5,522.7	3,257.4	3,066.0		
March	7,165.9	6,908.0	5,537.5	5,373.8	4,140.8	3,906.9	563.7	484.0		
April	6,258.7	6,108.9	5,270.7	5,195.4	3,523.0	3,105.1	548.5	442.0		
May	5,158.8	5,105.8	5,374.6	5,278.7	3,198.2	2,741.0	1,535.2	1,464.4		
June	7,564.2	6,943.7	7,385.0	7,049.8	7,129.4	6,586.2	3,977.5	3,399.7		
Average										
per month	5,927.3	5,633.3	5,061.4	4,868.4	5,860.2	5,544.6	2,540.8	2,275.7	6,478.7	6,186.8
per day	197.6	187.8	168.7	162.3	195.3	184.8	84.7	75.9	216.0	206.2

Source: Domestic Markets & Monetary Management Department, SBP

6.3 SBP Overnight Repo/ Reverse Repo Facilities

Cash Accommodation

(Million Rupees)

PERIODS	2015-16		2016-17		2017-18		2018-19		2019-20	
	SBP Overnight Reverse Repo (Ceiling)	SBP Overnight Repo (Floor)	SBP Overnight Reverse Repo (Ceiling)	SBP Overnight Repo (Floor)	SBP Overnight Reverse Repo (Ceiling)	SBP Overnight Repo (Floor)	SBP Overnight Reverse Repo (Ceiling)	SBP Overnight Repo (Floor)	SBP Overnight Reverse Repo (Ceiling)	SBP Overnight Repo (Floor)
July	244,850	6,400	164,950	6,650	7,800	-	167,100	107,000	99,550	355,750
August	137,300	1,000	269,000	5,200	37,200	-	46,900	39,500	186,000	-
September	540,000	81,850	70,500	-	40,800	3,500	277,900	-	-	-
October	204,100	7,700	28,100	6,000	67,000	13,500	265,300	82,500	-	-
November	76,600	2,000	800	25,650	45,900	-	54,600	-	-	-
December	298,100	61,650	36,650	11,700	150,400	38,500	276,800	-	-	-
January	121,600	-	110,100	-	-	12,400	49,900	162,000	-	-
February	96,200	18,350	11,600	33,900	12,400	-	109,400	4,700	-	-
March	288,600	92,400	39,100	22,800	47,000	47,800	57,275	16,150	-	-
April	77,900	-	45,000	61,800	95,000	-	692,600	201,900	-	-
May	44,000	4,000	25,000	173,000	92,900	63,800	205,100	115,200	-	-
June	625,500	255,000	134,850	18,650	242,500	-	257,000	104,200	-	-
Average										
per month	229,563	44,196	77,971	30,446	69,908	14,958	204,990	69,429	142,775	177,875
per day	7,652	1,473	2,599	1,015	2,330	499	6,833	2,314	4,759	5,929

SBP Overnight Repo/ Reverse Repo Rates

(Percent per annum)

PERIODS	2015-16		2016-17		2017-18		2018-19		2019-20	
	SBP Reverse Repo Rate ¹ (Ceiling)	SBP Repo Rate ² (Floor)	SBP Reverse Repo Rate ¹ (Ceiling)	SBP Repo Rate ² (Floor)	SBP Reverse Repo Rate ¹ (Ceiling)	SBP Repo Rate ² (Floor)	SBP Reverse Repo Rate ¹ (Ceiling)	SBP Repo Rate ² (Floor)	SBP Reverse Repo Rate ¹ (Ceiling)	SBP Repo Rate ² (Floor)
July	7.00	5.00	6.25	4.25	6.25	4.25	8.00	6.00	13.75	11.75
August	7.00	5.00	6.25	4.25	6.25	4.25	8.00	6.00	13.75	11.75
September	6.50	4.50	6.25	4.25	6.25	4.25	8.00	6.00	-	-
October	6.50	4.50	6.25	4.25	6.25	4.25	9.00	7.00	-	-
November	6.50	4.50	6.25	4.25	6.25	4.25	9.00	7.00	-	-
December	6.50	4.50	6.25	4.25	6.25	4.25	10.50	8.50	-	-
January	6.50	4.50	6.25	4.25	6.50	4.50	10.50	8.50	-	-
February	6.50	4.50	6.25	4.25	6.50	4.50	10.75	8.75	-	-
March	6.50	4.50	6.25	4.25	6.50	4.50	10.75	8.75	-	-
April	6.50	4.50	6.25	4.25	6.50	4.50	11.25	9.25	-	-
May	6.25	4.25	6.25	4.25	7.00	5.00	12.75	10.75	-	-
June	6.25	4.25	6.25	4.25	7.00	5.00	12.75	10.75	-	-

Source: Domestic Markets & Monetary Management Department, SBP

NOTE:1. SBP 3-day repo rate was renamed as SBP reverse repo rate w.e.f. August 17, 2009. SBP reverse repo rate (also known as policy rate or discount rate) is the rate at which banks borrow from SBP on an overnight basis.

2.SBP Repo rate (introduced w.e.f. August 17, 2009) is the rate at which banks deposit their end-of-day excess cash with SBP on an overnight basis.

6.4 Auction of Government of Pakistan Market Treasury Bills

(Million Rupees)

AUCTION SETTLEMENT DATE	3 Months Treasury Bills				6 Months Treasury Bills				12 Months Treasury Bills			
	Amount Offered	Amount Accepted	Cut-off Yield (%)	Weighted Average (%)	Amount Offered	Amount Accepted	Cut-off Yield (%)	Weighted Average (%)	Amount Offered	Amount Accepted	Cut-off Yield (%)	Weighted Average (%)
2018												
02-Aug-18	1,011,948	950,448	7.7500	7.7460	**	**	**	**	**	**	**	**
16-Aug-18	54,208	49,208	7.7500	7.7313	**	**	**	**	**	**	**	**
30-Aug-18	52,509	50,509	7.7500	7.7500	**	**	**	**	**	**	**	**
13-Sep-18	33,684	32,184	7.7500	7.7500	**	**	**	**	**	**	**	**
27-Sep-18	10,228	9,728	7.7500	7.7500	**	**	**	**	**	**	**	**
11-Oct-18	2,846,727	2,720,427	8.8000	8.7404	6,100	3,250	8.8492	8.8240	**	**	**	**
25-Oct-18	658,795	599,885	8.8000	8.7919	**	**	**	**	**	**	**	**
08-Nov-18	13,060	11,560	8.8000	8.7980	**	**	**	**	**	**	**	**
22-Nov-18	8,348	7,598	8.8000	8.7981	2,310	*	*	*	**	**	**	**
06-Dec-18	2,286,581	2,063,481	10.3013	10.2670	50,802	702	10.3499	10.3499	**	**	**	**
20-Dec-18	37,543	24,543	10.3013	10.2966	1,070	*	*	*	**	**	**	**
2019												
03-Jan-19	618,122	590,930	10.3013	10.3004	**	**	**	**	**	**	**	**
17-Jan-19	298,525	280,004	10.3013	10.3012	**	**	**	**	**	**	**	**
14-Feb-19	2,257,811	2,177,361	10.5500	10.5278	7,550	1,500	10.5999	10.5953	**	**	**	**
28-Feb-19	557,013	500,663	10.5500	10.5498	**	**	**	**	**	**	**	**
14-Mar-19	16,357	14,342	10.5500	10.5492	**	**	**	**	**	**	**	**
28-Mar-19	21,797	11,797	10.5500	10.5428	**	**	**	**	**	**	**	**
11-Apr-19	2,827,892	455,247	11.0000	10.9972	1,276	626	11.0899	11.0899	**	**	**	**
25-Apr-19	1,798,981	638,505	10.9799	10.9503	620	*	*	*	**	**	**	**
09-May-19	603,286	603,286	11.2491	11.0011	**	**	**	**	**	**	**	**
23-May-19	3,306,756	3,228,656	12.7495	12.5747	1,775	1,775	12.8010	12.6958	**	**	**	**
10-Jun-19	211,354	110,854	12.7493	12.7453	**	**	**	**	2,500	500	13.1500	13.1500
20-Jun-19	48,408	27,408	12.7491	12.7381	5,245	*	*	*	15,468	*	*	*
04-Jul-19	239,120	114,120	12.7495	12.7421	**	**	**	**	1,000	*	*	*
18-Jul-19	2,077,612	2,063,887	13.7499	13.6628	147,314	144,564	13.9500	13.8479	125,178	112,728	14.1000	14.0167
01-Aug-19	857,768	822,109	13.7499	13.7457	45,737	34,537	13.9500	13.9498	55,235	52,435	14.2400	14.1557
16-Aug-19	1,247,240	1,174,340	13.7499	13.7483	36,566	5,866	13.9500	13.9389	188,493	96,618	14.2499	14.2169
29-Aug-19	260,296	173,996	13.7499	13.7490	7,877	2,377	13.9399	13.9399	710,643	604,568	14.2400	14.1880

Source: Domestic Markets & Monetary Management Department, SBP

* = Bids Rejected
**= No Bids Received

6.5 Auction of Pakistan Investment Bonds (PIBs)

Fixed Rate

(Million Rupees)

AUCTION SETTLEMENT DATE	Tenure	Coupon Rate (%)	Amount Offered	Amount Accepted	Price Accepted = Rs.100	Cut-off Yield Accepted (%)	Weighted Yield Average Accepted (%)
21-Mar-19	3-Years	7.25	112,901.60	22,419.00	90.2012	12.2300	12.1981
	5-Years	8.00	55,230.00	24,608.40	84.9000	12.6405	12.5392
	10-Years	8.75	56,821.50	57,523.50	76.7277	13.1500	12.9681
	20-Years	10.75	-	-	-	-	-
18-Apr-19	3-Years	7.25	249,176.80	162,664.10	90.5387	12.2000	12.1419
	5-Years	8.00	164,734.50	-	-	-	-
	10-Years	8.75	145,472.50	-	-	-	-
	20-Years	10.75	-	-	-	-	-
30-May-19	3-Years	7.25	143,820.00	67,214.80	88.4534	13.6999	13.6117
	5-Years	8.00	116,273.50	36,183.10	82.20	13.8000	13.7145
	10-Years	8.75	205,016.60	29,753.80	75.06	13.6000	13.6000
	20-Years	10.75	-	-	-	-	-
27-Jun-19	3-Years	7.25	31,650.00	8,658.10	88.8323	13.6999	13.6770
	5-Years	8.00	82,224.70	35,046.30	82.4698	13.8000	13.7687
	10-Years	8.75	127,242.20	91,204.20	74.7608	13.7000	13.6820
	20-Years	10.75	-	-	-	-	-
25-Jul-19	3-Years	7.25	168,592.80	124,364.90	88.3519	14.2500	14.0206
	5-Years	8.00	268,747.50	72,091.80	82.7237	13.8000	13.7740
	10-Years	8.75	261,730.30	28,808.20	75.5024	13.5500	13.4548
	20-Years	10.75	-	-	-	-	-
22-Aug-19	3-Years	7.25	465,672.40	417,927.60	88.7331	14.2500	14.1519
	5-Years	8.00	293,951.40	65,221.40	83.6183	13.5500	13.4860
	10-Years	8.75	271,977.00	30,543.90	77.3050	13.1495	13.1017
	20-Years	10.75	2,758.80	*	-	-	-

Floating Rate

Face Value

SETTLEMENT DATE	Tenure	Amount Offered ¹	Amount Accepted ²	Cutoff Margin ³ (bps)
9-Aug-18	10-Year	151,525.00	108,275.60	70
17-Oct-18	10-Year	93,473.60	*	*
21-Feb-19	10-Year	164,825.00	88,903.00	70
21-Mar-19	10-Year	67,750.00	9,255.00	70
22-Mar-19	10-Year	67,750.00	9,255.00	70
18-Apr-19	10-Year	104,250.00	65,325.00	70
30-May-19	10-Year	68,500.00	25,007.00	70
30-Jun-19	10-Year	56,000.00	15,010.50	75
25-Jul-19	10-Year	128,150.00	84,150.00	75
22-Aug-19	10-Year	47,500.00	41,550.00	75

*= Bid Rejected

Source: Domestic Markets & Monetary Management Department, SBP

1-Amount offered only includes Competitive bids.

2-Amount accepted also includes Non-Competitive bids and Short selling. Securities will be issued at Face Value (Rs. 100)

3-This cut-off margin will be applicable to all accepted bids.

Note: No PIB (Floating Rate) Auction is conducted during the months of July, Sep, Nov, Dec 2018 & Jan 2019.

6.6 KIBOR

(Percent per annum)

PERIODS	1 Week		2 Weeks		1Month		3 Months		6 Months		9 Months		12 Months		
	Bid	Offer	Bid	Offer	Bid	Offer	Bid	Offer	Bid	Offer	Bid	Offer	Bid	Offer	
	2018 Jul	Month Average	6.69	7.19	6.71	7.21	6.76	7.26	6.94	7.19	7.04	7.29	7.12	7.62	7.24
	End-Month	7.32	7.82	7.37	7.87	7.47	7.97	7.66	7.91	7.77	8.02	7.85	8.35	7.95	8.45
Aug	Month Average	7.40	7.90	7.44	7.94	7.49	7.99	7.68	7.93	7.80	8.05	7.86	8.36	7.95	8.45
	End-Month	7.41	7.91	7.45	7.95	7.51	8.01	7.68	7.93	7.80	8.05	7.88	8.38	7.97	8.47
Sep	Month Average	7.43	7.93	7.51	8.01	7.61	8.11	7.81	8.06	7.98	8.23	8.14	8.64	8.27	8.77
	End-Month	7.52	8.02	7.71	8.21	7.92	8.42	8.07	8.32	8.34	8.59	8.43	8.93	8.56	9.06
Oct	Month Average	8.28	8.78	8.33	8.83	8.39	8.89	8.71	8.96	9.18	9.43	9.33	9.83	9.51	10.01
	End-Month	8.23	8.73	8.27	8.77	8.32	8.82	8.76	9.01	9.34	9.59	9.57	10.07	9.80	10.30
Nov	Month Average	8.30	8.80	8.34	8.84	8.44	8.94	9.08	9.33	9.62	9.87	9.84	10.34	10.01	10.51
	End-Month	8.49	8.99	8.65	9.15	8.92	9.42	9.35	9.60	9.77	10.02	9.94	10.44	10.16	10.66
Dec	Month Average	9.96	10.46	9.97	10.47	10.02	10.52	10.25	10.50	10.41	10.66	10.51	11.01	10.68	11.18
	End-Month	10.06	10.56	10.08	10.58	10.11	10.61	10.30	10.55	10.55	10.80	10.67	11.17	10.85	11.35
2019 Jan	Month Average	9.78	10.28	9.82	10.32	9.87	10.37	10.27	10.52	10.51	10.76	10.65	11.15	10.83	11.33
	End-Month	9.79	10.29	9.83	10.33	9.92	10.42	10.27	10.52	10.50	10.75	10.65	11.15	10.82	11.32
Feb	Month Average	10.10	10.60	10.14	10.64	10.17	10.67	10.46	10.71	10.60	10.85	10.75	11.25	10.92	11.42
	End-Month	10.13	10.63	10.15	10.65	10.19	10.69	10.48	10.73	10.59	10.84	10.75	11.25	10.95	11.45
Mar	Month Average	10.13	10.63	10.17	10.67	10.24	10.74	10.54	10.79	10.65	10.90	10.78	11.28	10.98	11.48
	End-Month	10.16	10.66	10.27	10.77	10.43	10.93	10.74	10.99	10.85	11.10	10.92	11.42	11.05	11.55
Apr	Month Average	10.48	10.98	10.52	11.02	10.58	11.08	10.87	11.12	11.00	11.25	11.09	11.59	11.15	11.66
	End-Month	10.49	10.99	10.53	11.03	10.58	11.08	10.85	11.10	11.00	11.25	11.09	11.59	11.15	11.65
May	Month Average	11.20	11.70	11.26	11.76	11.37	11.87	11.79	12.04	11.92	12.17	12.02	12.52	12.14	12.64
	End-Month	12.20	12.70	12.23	12.73	12.29	12.79	12.63	12.88	12.76	13.01	12.86	13.36	12.97	13.47
Jun	Month Average	12.24	12.74	12.27	12.77	12.32	12.82	12.68	12.93	12.81	13.06	12.92	13.42	13.06	13.56
	End-Month	12.27	12.77	12.32	12.82	12.37	12.87	12.72	12.97	12.86	13.11	12.97	13.47	13.13	13.63
Jul	Month Average	12.69	13.19	12.75	13.25	12.83	13.33	13.18	13.43	13.31	13.56	13.38	13.88	13.47	13.97
	End-Month	13.21	13.71	13.26	13.76	13.30	13.80	13.65	13.90	13.76	14.01	13.81	14.31	13.83	14.33
Aug	Month Average	13.21	13.71	13.27	13.77	13.31	13.81	13.66	13.91	13.82	14.07	13.88	14.38	13.94	14.44
	End-Month	13.21	13.71	13.26	13.76	13.31	13.81	13.68	13.93	13.83	14.08	13.89	14.39	13.95	14.45

KIBOR :Karachi Interbank Offered Rate

Source: Reuters

Archive Link: http://www.sbp.org.pk/ecodata/kibor_index.asp

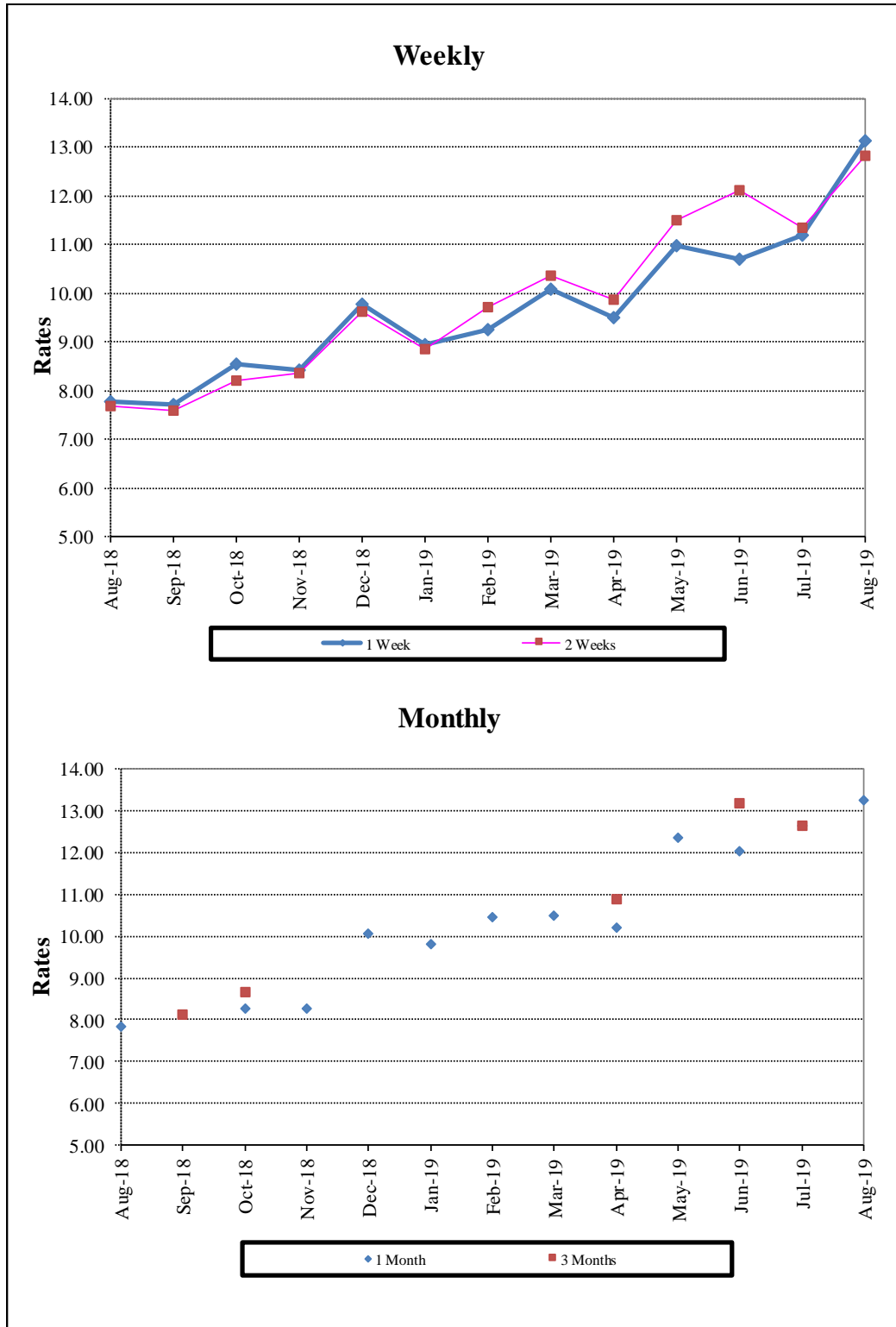
6.7 Inter-Bank Weighted Average Call Rates

		(Per Annum)					
PERIODS		Overnight	1 Week	2 Weeks	1 Month	3 Months	6 Months
2018	Jul	6.91	7.25	7.08	7.42	10.00	-
	Aug	7.61	7.77	7.69	7.83	-	7.75
	Sep	7.68	7.72	7.58	-	8.12	8.08
	Oct	8.37	8.55	8.19	8.26	8.65	9.24
	Nov	8.66	8.42	8.36	8.26	-	-
	Dec	10.06	9.78	9.63	10.06	-	-
	2019	Jan	9.62	8.94	8.86	9.81	-
Feb		9.83	9.27	9.70	10.44	-	-
Mar		10.37	10.08	10.35	10.50	-	9.00
Apr		10.29	9.50	9.86	10.19	10.87	-
May		10.96	10.96	11.50	12.33	-	10.92
Jun		11.47	10.71	12.12	12.03	13.18	-
Jul		12.10	11.20	11.35	12.65	12.62	12.96
Aug		13.19	13.13	12.84	13.23	-	13.61

Source: Domestic Markets & Monetary Management Department, SBP

Note: Weighted Average Call Rates of all the call deals executed during the month.

Inter- Bank Weighted Average Call Rates



6.8 SBP Mark to Market Rates Major Currencies

Date	US Dollar			Euro			Japanese Yen			UK Pound Sterling		
	Ready	1Week	1 Month	Ready	1Week	1 Month	Ready	1Week	1 Month	Ready	1Week	1 Month
1-Aug-19	159.4209	159.7530	160.9348	176.0964	176.5586	178.2031	1.4621	1.4660	1.4793	193.2182	193.6817	195.3386
2-Aug-19	159.1151	159.4494	160.6284	176.5780	177.0434	178.6890	1.4887	1.4925	1.5062	192.9748	193.4408	195.0933
5-Aug-19	158.9381	159.4884	160.4866	177.1525	177.8601	179.3365	1.4991	1.5050	1.5173	193.1098	193.8379	195.2874
6-Aug-20	158.6508	159.1735	160.2112	177.6651	178.3433	179.8538	1.4909	1.4965	1.5089	193.2922	193.9849	195.4719
7-Aug-19	158.2526	158.7289	159.9303	177.0293	177.6532	179.3273	1.4892	1.4944	1.5083	192.1582	192.7898	194.4525
8-Aug-19	158.2591	158.6785	159.8843	177.5035	178.0652	179.7470	1.4918	1.4965	1.5105	192.4985	193.0631	194.7353
9-Aug-19	158.4478	158.8217	160.0199	177.4457	177.9562	179.6277	1.4968	1.5011	1.5154	191.9279	192.4358	194.0935
16-Aug-19	158.9560	159.3335	160.5366	176.1948	176.7060	178.3699	1.4932	1.4974	1.5114	193.2110	193.7281	195.3998
17-Aug-19	158.6685	159.0405	160.2458	175.9634	176.4686	178.1327	1.4916	1.4958	1.5098	192.7902	193.2990	194.9697
19-Aug-19	158.6176	159.0387	160.2844	176.0576	176.6172	178.3517	1.4883	1.4930	1.5075	192.3159	192.8826	194.6129
20-Aug-19	158.5947	158.9909	160.2793	175.7229	176.2527	178.0156	1.4916	1.4960	1.5109	191.8044	192.3385	194.1058
21-Aug-19	158.5762	158.9707	160.3736	175.9720	176.4999	178.3778	1.4892	1.4936	1.5094	192.5750	193.1068	195.0094
22-Aug-19	158.2346	158.6317	160.0024	175.4506	175.9973	177.8215	1.4885	1.4931	1.5083	192.1601	192.7019	194.5569
23-Aug-19	157.5215	157.9065	159.2170	174.2031	174.7243	176.4937	1.4769	1.4812	1.4959	192.4598	192.9907	194.8033
26-Aug-19	157.3586	157.7384	158.9020	174.8883	175.4070	177.0455	1.4863	1.4906	1.5042	192.6620	193.1878	194.8226
27-Aug-19	157.2569	157.5774	158.7313	174.7439	175.1945	176.8054	1.4859	1.4897	1.5031	192.7105	193.1646	194.7784
28-Aug-19	157.2860	157.6203	158.8525	174.4223	174.8862	176.5694	1.4866	1.4905	1.5046	192.0226	192.4865	194.1762
29-Aug-19	157.2208	157.5368	158.7075	174.0749	174.5156	176.1316	1.4791	1.4828	1.4964	191.5736	192.0146	193.6400
30-Aug-19	156.8577	157.1511	158.2212	173.1552	173.5696	175.0719	1.4740	1.4775	1.4902	191.0841	191.4973	193.0036

Source: Domestic Markets & Monetary Management Department, SBP

6.8 SBP Mark to Market Rates Major Currencies

Date	Swiss Frank			Australian Dollar			Saudi Arabian Riyal			Kuwaiti Dinar		
	Ready	1Week	1 Month	Ready	1Week	1 Month	Ready	1Week	1 Month	Ready	1Week	1 Month
1-Aug-19	160.2623	160.6952	162.2387	109.2990	109.5551	110.4547	42.5049	42.5941	42.9125	523.1290	524.2040	528.0332
2-Aug-19	161.3008	161.7397	163.2925	108.0392	108.2910	109.1829	42.4171	42.5070	42.8285	522.8289	523.8843	527.7390
5-Aug-19	163.0135	163.6794	165.0920	107.3389	107.7371	108.5061	42.3699	42.5174	42.7907	522.6688	524.4166	527.6179
6-Aug-20	162.8357	163.4716	164.9057	107.7160	108.0957	108.8902	42.2956	42.4357	42.7196	521.6289	523.3023	526.6033
7-Aug-19	161.6307	162.2129	163.7914	106.4565	106.7992	107.6872	42.1894	42.3190	42.6430	520.1407	521.6646	525.4460
8-Aug-19	162.3837	162.9102	164.4996	107.4421	107.7497	108.6528	42.1912	42.3042	42.6296	520.4016	521.7413	525.5395
9-Aug-19	162.8530	163.3347	164.9195	107.8871	108.1668	109.0699	42.2415	42.3434	42.6646	521.0301	522.2188	525.9914
16-Aug-19	162.2000	162.6854	164.2736	107.7642	108.0442	108.9510	42.3792	42.4821	42.8046	522.3152	523.5072	527.2572
17-Aug-19	162.1714	162.6514	164.2372	107.5931	107.8699	108.7727	42.2998	42.3996	42.7225	521.4563	522.6009	526.3797
19-Aug-19	162.0697	162.5979	164.2542	107.4238	107.7339	108.6683	42.2924	42.4063	42.7397	521.2626	522.5827	526.4391
20-Aug-19	161.9884	162.4903	164.1700	107.4083	107.7014	108.6624	42.2863	42.3930	42.7383	521.3587	522.5974	526.5938
21-Aug-19	161.8042	162.3019	164.0832	107.6415	107.9334	108.9692	42.2825	42.3883	42.7629	521.4180	522.6464	526.9998
22-Aug-19	161.0203	161.5386	163.2615	106.9983	107.2951	108.2997	42.1914	42.2979	42.6639	520.2434	521.4690	525.7354
23-Aug-19	159.6610	160.1526	161.8253	106.4058	106.6912	107.6583	42.0018	42.1051	42.4550	517.8053	518.9998	523.0494
26-Aug-19	160.7668	161.2571	162.8173	106.3980	106.6793	107.5507	41.9589	42.0608	42.3705	518.0785	519.2673	522.8119
27-Aug-19	160.4499	160.8780	162.4125	106.2428	106.4837	107.3453	41.9318	42.0167	42.3238	517.6757	518.6707	522.2379
28-Aug-19	160.2343	160.6755	162.2746	106.0737	106.3245	107.2335	41.9396	42.0290	42.3573	517.6693	518.7101	522.5256
29-Aug-19	159.7773	160.1954	161.7335	106.0769	106.3151	107.1784	41.9200	42.0042	42.3152	517.3355	518.3153	521.9732
30-Aug-19	158.6585	159.0498	160.4849	105.4398	105.6623	106.4549	41.8243	41.9025	42.1889	515.9371	516.8473	520.1461

Source: Domestic Markets & Monetary Management Department, SBP

Archive Link: <http://www.sbp.org.pk/ecodata/rates/m2m/M2M-History.asp>

6.9 Secondary Market Transactions in Government Securities

(Billion Rupees)

SECURITIES / TRANSACTIONS	2018					2019								
	Aug	Sep	Oct	Nov	Dec	Jan	Feb	Mar	Apr	May	Jun	Jul	Aug	
PIBs														
Purchases	1,123.5	737.8	1,290.5	1,035.6	1,208.1	965.5	1,355.5	1,148.0	1,015.3	1,077.9	841.8	750.8	1,142.8	
Non Banks	Repo	4.4	6.8	27.1	30.0	9.1	45.1	30.3	15.3	17.6	33.2	4.1	27.5	0.6
	outright	129.6	33.7	117.1	54.4	111.9	83.6	182.0	112.9	101.9	122.9	130.0	138.9	93.2
Banks/PDs	Repo	158.4	254.8	856.1	751.6	437.7	674.1	603.6	780.3	596.8	537.0	333.7	268.6	265.2
	outright	92.8	101.4	184.7	168.4	252.2	154.6	243.4	215.6	285.3	284.0	202.8	190.1	310.4
SBP	Repo	738.3	341.2	105.4	31.2	397.2	8.1	296.3	23.8	13.6	100.9	171.2	125.7	473.4
Sales	1,123.5	737.8	1,290.5	1,035.6	1,208.1	965.5	1,355.5	1,148.0	1,015.3	1,077.9	841.8	750.8	1,142.8	
Non Banks	Repo	47.0	40.1	76.0	81.4	61.5	24.0	96.1	153.8	102.0	112.4	129.2	73.1	54.3
	outright	48.3	37.7	73.2	51.8	109.8	60.3	48.0	59.5	67.8	57.7	45.8	43.2	49.9
Banks/PDs	Repo	854.1	562.7	912.7	731.4	782.5	703.3	834.0	665.7	525.9	558.7	379.8	348.7	684.9
	outright	174.1	97.4	228.7	171.0	254.3	177.9	377.4	269.0	319.5	349.2	287.0	285.7	353.7
SBP	Repo	-	-	-	-	-	-	-	-	-	-	-	-	-
Net Position	-	-	-	-	-	-	-	-	-	-	-	-	-	
Treasury Bills														
Purchases	12,404.0	6,053.6	8,133.8	8,881.4	11,109.0	13,344.6	13,042.2	7,610.3	8,782.5	12,755.6	7,200.1	10,196.6	12,450.6	
Non Banks	Repo	88.4	111.8	121.8	175.9	124.5	319.5	172.1	57.6	64.8	208.6	99.6	184.2	108.7
	outright	556.8	183.0	961.8	208.0	379.2	890.2	838.9	345.7	687.0	885.6	340.1	561.2	1,036.5
Banks/PDs	Repo	2,851.9	3,524.0	4,786.9	7,971.7	4,794.2	10,659.6	7,188.2	5,869.9	5,958.0	7,936.7	2,496.7	3,891.5	2,294.6
	outright	1,349.2	628.2	2,032.4	505.1	1,547.3	1,433.4	1,963.9	819.6	1,243.7	2,128.2	871.8	1,310.9	1,628.9
SBP	Repo	7,557.7	1,606.6	230.9	20.7	4,263.7	41.8	2,879.2	517.5	829.0	1,596.6	3,392.0	4,248.8	7,382.0
Sales	12,404.0	6,053.6	8,133.8	8,881.4	11,109.0	13,344.6	13,042.2	7,610.3	8,782.5	12,755.6	7,200.1	10,196.6	12,450.6	
Non Banks	Repo	18.9	8.4	31.5	16.4	32.8	8.1	9.7	9.9	11.6	10.6	12.2	31.0	46.5
	outright	272.1	226.0	375.5	185.0	512.3	441.4	652.6	409.9	467.5	513.0	446.7	257.8	499.0
Banks/PDs	Repo	9,545.4	4,998.8	3,329.2	1,521.4	6,830.2	1,942.3	5,019.3	3,064.6	3,474.6	3,838.5	5,766.8	7,540.9	9,738.7
	outright	1,633.9	585.1	2,618.7	528.1	1,414.2	1,882.3	2,150.2	755.5	1,463.2	2,500.8	765.2	1,614.3	2,166.4
SBP	Repo	933.8	235.3	1,779.0	6,630.6	2,319.5	9,070.6	5,210.5	3,370.5	3,365.7	5,892.8	209.2	752.7	-
Net Position	-	-	-	-	-	-	-	-	-	-	-	-	-	

PDs: Primary Dealers

Source: Domestic Markets & Monetary Management Department, SBP

Note: Month-wise volume of repo/outright transactions during the month.