

6.1 Government of Pakistan Treasury Bills

Million Rupees

	2016				2017			
	Jun	Aug	Sep	Dec	Jun	Jul	Aug	Sep
3 Months Treasury Bills								
Issue	40,899.8	203,272.5	106,240.1	259,517.6	287,915.3	1,154,468.8	1,524,140.5	737,433.9
Discount Allowed	556.9	2,737.9	1,432.0	3,555.9	3,969.6	15,917.1	21,013.1	10,167.4
Discharged	21,042.0	196,947.7	61,417.3	40,039.1	238,038.4	548,760.2	556,269.0	670,940.0
Discount Paid	298.3	2,778.9	820.9	539.7	3,263.1	7,553.0	7,669.5	9,250.6
Outstanding Balance	242,874.9	339,690.2	384,512.9	815,942.2	1,364,405.8	1,970,114.4	2,937,985.9	3,004,479.8
6 Months Treasury Bills								
Issue	161,548.7	398,277.6	117,642.1	47,523.1	222,002.7	445,475.6	326,659.1	97,270.5
Discount Allowed	4,696.6	11,705.6	3,463.6	1,416.5	6,653.9	13,351.9	9,789.7	2,915.4
Discharged	41,671.8	64,241.9	141,961.3	161,548.7	47,523.1	490,016.4	649,715.8	211,058.2
Discount Paid	1,312.1	1,998.4	4,382.2	4,764.6	1,416.5	14,502.5	19,382.2	6,304.7
Outstanding Balance	816,882.6	1,291,522.9	1,267,203.6	1,049,790.1	1,838,875.8	1,794,335.0	1,471,278.3	1,357,490.6
12 Months Treasury Bills								
Issue	129,847.6	163,400.2	75,422.1	-	5,652.8	16,251.3	19,178.5	9,549.3
Discount Allowed	7,711.2	9,618.8	4,448.3	-	340.7	978.6	1,154.9	574.7
Discharged	7,620.8	328,430.9	70,197.8	940.7	129,847.6	224,113.8	195,810.9	43,011.3
Discount Paid	519.4	22,736.9	4,879.5	59.3	7,711.2	13,053.1	11,530.5	2,536.5
Outstanding Balance	1,712,268.0	1,692,699.1	1,697,923.4	1,537,189.6	884,431.4	676,568.9	499,936.4	466,474.4

Source: Domestic Markets & Monetary Management Department SBP

Note: Six months Government of Pakistan Treasury Bills restarted w. e. f. June 1998 and 3 & 12 Months Government of Pakistan Treasury Bills restarted w.e.f July 1998.

6.2 Sale / Purchase of Treasury Bills under Open Market Operation by SBP with Banks

SALE

(Billion Rupees)

PERIODS	2013-14		2014-15		2015-16		2016-17		2017-18	
	Bid Amount		Bid Amount		Bid Amount		Bid Amount		Bid Amount	
	Offered	Accepted	Offered	Accepted	Offered	Accepted	Offered	Accepted	Offered	Accepted
July	161.5	142.4	173.7	166.7	169.5	169.5	-	-	-	-
August	763.3	725.2	-	-	-	-	138.0	109.0	-	-
September	913.0	689.8	-	-	54.5	21.0	-	-	63.0	38.0
October	72.8	54.0	-	-	41.5	28.0	179.7	95.5	-	-
November	702.4	668.0	-	-	-	-	-	-	-	-
December	-	-	-	-	63.3	43.0	178.7	150.0	-	-
January	-	-	-	-	-	-	-	-	-	-
February	173.3	129.1	122.9	122.6	-	-	59.0	20.9	-	-
March	103.0	69.0	-	-	121.0	95.1	-	-	-	-
April	53.0	35.0	351.2	303.1	116.9	61.9	-	-	-	-
May	72.0	54.2	160.3	137.8	120.5	83.6	-	-	-	-
June	330.3	289.1	59.3	46.5	66.8	44.3	51.6	40.0	-	-
Average										
per month	278.7	238.0	72.3	64.7	62.8	45.5	50.6	34.6	21.0	12.7
per day	9.3	7.9	2.4	2.2	2.1	1.5	1.69	1.15	0.70	0.42

PURCHASE

PERIODS	2013-14		2014-15		2015-16		2016-17		2017-18	
	Amount		Amount		Amount		Amount		Amount	
	Offered	Offered	Offered	Injected	Offered	Injected	Offered	Injected	Offered	Injected
July	694.8	631.3	380.6	342.7	4,335.1	4,200.5	6,965.6	6,655.1	6,181.3	5,797.7
August	-	-	220.6	183.3	4,637.3	4,553.5	3,951.0	3,873.5	6,066.4	5,940.3
September	-	-	506.2	414.7	6,602.8	5,818.4	6,206.9	5,870.9	7,881.6	7,733.5
October	189.5	136.3	633.8	603.8	7,058.8	6,668.1	4,024.4	3,960.4	-	-
November	234.3	121.5	1,183.6	1,161.1	5,432.5	5,318.9	3,242.3	3,096.9	-	-
December	397.6	241.1	2,198.8	2,147.7	6,465.0	6,121.8	4,551.0	4,234.6	-	-
January	459.5	263.0	3,058.2	3,007.4	4,863.4	4,598.6	4,099.7	3,878.5	-	-
February	359.10	348.10	2,915.7	2,850.7	5,585.2	5,253.8	4,127.9	3,953.7	-	-
March	860.6	520.1	4,484.6	4,290.6	7,165.9	6,908.0	5,537.5	5,373.8	-	-
April	1,152.0	1,033.7	4,249.7	4,053.6	6,258.7	6,108.9	5,270.7	5,195.4	-	-
May	1,641.7	1,431.5	3,509.4	3,462.4	5,158.8	5,105.8	5,374.6	5,278.7	-	-
June	212.7	199.4	2,515.9	2,506.9	7,564.2	6,943.7	7,385.0	7,049.8	-	-
Average										
per month	516.8	410.5	2,154.7	2,085.4	5,927.3	5,633.3	5,061.4	4,868.4	6,709.7	6,490.5
per day	17.2	13.7	71.8	69.5	197.6	187.8	168.7	162.3	223.7	216.4

Source: Domestic Markets & Monetary Management Department, SBP

6.3 SBP Overnight Repo/ Reverse Repo Facilities

Cash Accommodation

(Million Rupees)

PERIODS	2013-14		2014-15		2015-16		2016-17		2017-18	
	SBP Overnight Reverse Repo (Ceiling)	SBP Overnight Repo (Floor)	SBP Overnight Reverse Repo (Ceiling)	SBP Overnight Repo (Floor)	SBP Overnight Reverse Repo (Ceiling)	SBP Overnight Repo (Floor)	SBP Overnight Reverse Repo (Ceiling)	SBP Overnight Repo (Floor)	SBP Overnight Reverse Repo (Ceiling)	SBP Overnight Repo (Floor)
July	171,300	45,400	190,400	48,150	244,850	6,400	164,950	6,650	7,800	-
August	31,550	54,500	137,950	45,000	137,300	1,000	269,000	5,200	37,200	-
September	47,700	319,100	362,450	70,300	540,000	81,850	70,500	-	40,800	3,500
October	327,700	22,000	244,650	314,950	204,100	7,700	28,100	6,000		
November	228,250	177,800	343,700	-	76,600	2,000	800	25,650		
December	421,950	-	582,050	54,400	298,100	61,650	36,650	11,700		
January	389,100	34,000	314,550	7,250	121,600	-	110,100	-		
February	307,000	203,800	74,450	63,250	96,200	18,350	11,600	33,900		
March	863,000	2,100	142,500	-	288,600	92,400	39,100	22,800		
April	423,050	8,000	139,650	87,250	77,900	-	45,000	61,800		
May	791,000	80,350	43,750	-	44,000	4,000	25,000	173,000		
June	83,150	137,200	118,850	38,900	625,500	255,000	134,850	18,650		
Average										
per month	340,396	90,354	224,579	60,788	229,563	44,196	77,971	30,446	28,600	1,167
per day	11,347	3,012	7,486	2,026	7,652	1,473	2,599	1,015	953	39

SBP Overnight Repo/ Reverse Repo Rates

(Percent per annum)

PERIODS	2013-14		2014-15		2015-16		2016-17		2017-18	
	SBP Reverse Repo Rate ¹ (Ceiling)	SBP Repo Rate ² (Floor)	SBP Reverse Repo Rate ¹ (Ceiling)	SBP Repo Rate ² (Floor)	SBP Reverse Repo Rate ¹ (Ceiling)	SBP Repo Rate ² (Floor)	SBP Reverse Repo Rate ¹ (Ceiling)	SBP Repo Rate ² (Floor)	SBP Reverse Repo Rate ¹ (Ceiling)	SBP Repo Rate ² (Floor)
July	9.0	6.5	10.0	7.5	7.00	5.00	6.25	4.25	6.25	4.25
August	9.0	6.5	10.0	7.5	7.00	5.00	6.25	4.25	6.25	4.25
September	9.5	7.0	10.0	7.5	6.50	4.50	6.25	4.25	6.25	4.25
October	9.5	7.0	10.0	7.5	6.50	4.50	6.25	4.25		
November	10.0	7.5	9.5	7.0	6.50	4.50	6.25	4.25		
December	10.0	7.5	9.5	7.0	6.50	4.50	6.25	4.25		
January	10.0	7.5	8.5	6.0	6.50	4.50	6.25	4.25		
February	10.0	7.5	8.5	6.0	6.50	4.50	6.25	4.25		
March	10.0	7.5	8.0	5.5	6.50	4.50	6.25	4.25		
April	10.0	7.5	8.0	5.5	6.50	4.50	6.25	4.25		
May	10.0	7.5	7.0	5.0	6.25	4.25	6.25	4.25		
June	10.0	7.5	7.0	5.0	6.25	4.25	6.25	4.25		

Source: Domestic Markets & Monetary Management Department, SBP

NOTE:1. SBP 3-day repo rate was renamed as SBP reverse repo rate w.e.f. August 17, 2009. SBP reverse repo rate (also known as policy rate or discount rate) is the rate at which banks borrow from SBP on an overnight basis.

2.SBP Repo rate (introduced w.e.f. August 17, 2009) is the rate at which banks deposit their end-of-day excess cash with SBP on an overnight basis.

6.4 Auction of Government of Pakistan Market Treasury Bills

(Million Rupees)

AUCTION SETTLEMENT DATE	3 Months Treasury Bills				6 Months Treasury Bills				12 Months Treasury Bills			
	Amount Offered	Amount Accepted	Cut-off Yield (%)	Weighted Average (%)	Amount Offered	Amount Accepted	Cut-off Yield (%)	Weighted Average (%)	Amount Offered	Amount Accepted	Cut-off Yield (%)	Weighted Average (%)
2016												
4-Aug-16	231,157	91,639	5.8571	5.8466	332,704	187,354	5.9046	5.8888	174,646	112,146	5.9148	5.8974
18-Aug-16	185,772	114,372	5.8571	5.8568	377,404	222,629	5.9046	5.899	130,373	60,873	5.9148	5.9128
1-Sep-16	128,243	67,093	5.8571	5.8571	144,655	82,855	5.9046	5.9046	47,323	34,323	5.9148	5.9148
15-Sep-16	47,934	19,534	5.8571	5.8571	47,927	35,327	5.9046	5.9046	38,213	34,213	5.9148	5.9131
29-Sep-16	53,430	21,045	5.8571	5.8571	20,974	2,924	5.9046	5.9046	16,085	11,335	5.9148	5.9148
13-Oct-16	70,217	14,917	5.8571	5.8571	37,481	27,181	5.9046	5.9046	37,179	33,279	5.9148	5.9148
27-Oct-16	128,336	75,536	5.9017	5.8777	42,664	2,364	5.9046	5.9046	23,410	21,910	5.9148	5.9148
10-Nov-16	298,590	278,190	5.9463	5.9189	87,970	32,770	5.9471	5.9243	27,056	Bids Rej.	Bids Rej.	Bids Rej.
24-Nov-16	264,069	195,363	5.9463	5.9463	195,991	105,891	5.9471	5.944	38,657	11,566	5.9485	5.9485
8-Dec-16	233,050	154,225	5.9463	5.9463	74,275	2,775	5.9471	5.9471	2,877	Bids Rej.	Bids Rej.	Bids Rej.
22-Dec-16	123,848	108,848	5.991	5.9649	76,165	45,165	6.0109	5.9792	2,525	Bids Rej.	Bids Rej.	Bids Rej.
2017												
5-Jan-17	185,949	14,631	5.9463	5.9463	362,756	223,851	5.9896	5.9758	109,826	25,665	5.9935	5.9935
19-Jan-17	280,380	161,651	5.9017	5.8821	635,868	280,668	5.9258	5.9033	208,235	112,528	5.9598	5.9313
2-Feb-17	385,376	297,326	5.9463	5.9211	269,956	248,956	5.9896	5.9714	104,535	75,535	5.9935	5.9489
16-Feb-17	379,251	292,101	5.9463	5.9417	226,073	214,073	5.9896	5.9893	155,829	152,829	5.9935	5.9927
2-Mar-17	264,139	196,776	5.9463	5.9463	223,819	206,069	5.9896	5.9896	5,038	3,038	5.9935	5.9935
16-Mar-17	199,202	146,552	5.9463	5.9463	170,809	146,309	5.9896	5.9896	20,775	Bids Rej.	Bids Rej.	Bids Rej.
30-Mar-17	100,249	94,749	5.991	5.9718	108,054	71,054	6.0109	5.9934	975	No Bids Rec.	No Bids Rec	No Bids Rec
13-Apr-17	284,838	270,838	5.991	5.9753	68,238	Bids Rej.	Bids Rej.	Bids Rej.	2,825	Bids Rej.	Bids Rej.	Bids Rej.
27-Apr-17	287,575	285,475	5.991	5.9851	99,660	89,660	6.0109	6.0082	36,819	7,819	6.027	5.9992
11-May-17	300,376	275,526	5.991	5.991	126,951	99,451	6.0109	6.0109	7,050	3,550	6.0273	6.0273
25-May-17	274,080	259,480	5.991	5.991	111,446	84,946	6.0109	6.0109	23,252	3,252	6.0499	6.0499
8-Jun-17	73,932	28,932	5.991	5.9904	193,368	133,368	6.0109	6.0109	5,438	2,938	6.0499	6.0499
22-Jun-17	309,953	262,953	5.991	5.991	113,789	95,289	6.0109	6.0109	5,056	3,056	6.0386	6.0386
6-Jul-17	462,988	417,238	5.991	5.991	156,013	127,013	6.0109	6.0109	17,666	10,666	6.0386	6.0386
20-Jul-17	761,148	753,148	5.991	5.9909	332,314	331,814	6.0109	6.0109	16,814	15,857	6.0386	6.0381
03-Aug-17	605,111	588,411	5.9910	5.9902	142,958	138,708	6.0109	6.0093	25,887	19,637	5.9910	6.0109
17-Aug-17	539,264	515,264	5.9910	5.9910	122,519	110,769	6.0109	6.0109	1,326	Bids Rejected	5.9910	6.0109
31-Aug-17	447,978	441,478	5.9910	5.9910	93,972	86,972	6.0109	6.0109	2,697	697	5.9910	6.0109
14-Sep-17	358,166	351,466	5.9910	5.9910	24,296	19,796	6.0109	6.0109	6,271	6,271	5.9910	6.0109
28-Sep-17	402,636	396,136	5.9910	5.9910	100,390	80,390	6.0109	6.0109	3,853	3,853	5.9910	6.0109

Source: Domestic Markets & Monetary Management Department, SBP

6.5 Auction of Pakistan Investment Bonds (PIBs)

(Million Rupees)

AUCTION SETTLEMENT DATE	Tenure	Coupon Rate (%)	Amount Offered	Amount Accepted	Price Accepted = Rs.100	Cut-off Yield Accepted (%)	Weighted Yield Average Accepted (%)
20-Apr-17	3-Years	7.00	21,630.50	-	-	-	-
	5-Years	7.75	7,066.00	-	-	-	-
	10-Years	8.75	2,736.00	-	-	-	-
	20-Years	10.75	-	-	-	-	-
18-May-17	3-Years	7.00	55,564.00	33,864.00	101.40	6.4060	6.3992
	5-Years	7.75	17,988.50	5,238.50	103.31	6.8974	6.8902
	10-Years	8.75	9,422.00	1,114.00	105.39	7.9358	7.9358
	20-Years	10.75	-	-	-	-	-
15-Jun-17	3-Years	7.00	74,422.90	68,322.90	101.37	6.4050	6.4043
	5-Years	7.75	7,200.00	3,500.00	103.27	6.8974	6.8952
	10-Years	8.75	8,910.00	3,210.00	105.37	7.9358	7.9356
	20-Years	10.75	-	-	-	-	-
26-Jul-17	3-Years	7.00	37,776.00	23,376.00	101.30	6.4091	6.4029
	5-Years	7.75	15,150.00	10,150.00	103.20	6.8961	6.8960
	10-Years	8.75	23,445.00	22,095.00	105.32	7.9360	7.9359
	20-Years	10.75	-	-	-	-	-
24-Aug-17	3-Years	7.00	20,117.90	-	-	-	-
	5-Years	7.75	2,526.50	-	-	-	-
	10-Years	8.75	3,191.50	-	-	-	-
	20-Years	10.75	-	-	-	-	-
21-Sep-17	3-Years	7.00	2,926.00	-	-	-	-
	5-Years	7.75	750.00	-	-	-	-
	10-Years	8.75	2,133.90	-	-	-	-
	20-Years	10.75	-	-	-	-	-

Source: Domestic Markets & Monetary Management Department, SBP

6.6 KIBOR

(Percent per annum)

PERIODS	1 Week		2 Weeks		1Month		3 Months		6 Months		9 Months		12 Months		
	Bid	Offer	Bid	Offer	Bid	Offer	Bid	Offer	Bid	Offer	Bid	Offer	Bid	Offer	
2016															
Sep	Month Average	5.71	6.21	5.73	6.23	5.74	6.24	5.78	6.03	5.80	6.05	5.82	6.32	5.85	6.35
	End-Month	5.74	6.24	5.74	6.24	5.75	6.25	5.79	6.04	5.81	6.06	5.83	6.33	5.86	6.36
Oct	Month Average	5.66	6.16	5.69	6.19	5.73	6.23	5.78	6.03	5.80	6.05	5.84	6.34	5.87	6.37
	End-Month	5.68	6.18	5.71	6.21	5.74	6.24	5.79	6.04	5.80	6.05	5.84	6.34	5.88	6.38
Nov	Month Average	5.69	6.19	5.71	6.21	5.75	6.25	5.82	6.07	5.84	6.09	5.87	6.37	5.90	6.40
	End-Month	5.72	6.22	5.73	6.23	5.76	6.26	5.85	6.10	5.87	6.12	5.89	6.39	5.91	6.41
Dec	Month Average	5.72	6.22	5.74	6.24	5.75	6.25	5.85	6.10	5.89	6.14	5.90	6.40	5.93	6.43
	End-Month	5.72	6.22	5.75	6.25	5.76	6.26	5.87	6.12	5.90	6.15	5.91	6.41	5.94	6.44
2017															
Jan	Month Average	5.73	6.23	5.75	6.25	5.75	6.25	5.84	6.09	5.87	6.12	5.88	6.38	5.91	6.41
	End-Month	5.74	6.24	5.76	6.26	5.76	6.26	5.84	6.09	5.87	6.12	5.88	6.38	5.90	6.40
Feb	Month Average	5.73	6.23	5.75	6.25	5.76	6.26	5.84	6.09	5.88	6.13	5.89	6.39	5.91	6.41
	End-Month	5.75	6.25	5.75	6.25	5.76	6.26	5.82	6.07	5.87	6.12	5.90	6.40	5.91	6.41
Mar	Month Average	5.73	6.23	5.75	6.25	5.76	6.26	5.83	6.08	5.88	6.13	5.90	6.40	5.91	6.41
	End-Month	5.76	6.26	5.76	6.26	5.77	6.27	5.87	6.12	5.91	6.16	5.92	6.42	5.94	6.44
Apr	Month Average	5.75	6.25	5.76	6.26	5.77	6.27	5.89	6.14	5.91	6.16	5.94	6.44	5.97	6.47
	End-Month	5.76	6.26	5.77	6.27	5.79	6.29	5.89	6.14	5.92	6.17	5.94	6.44	5.97	6.47
May	Month Average	5.73	6.23	5.75	6.25	5.77	6.27	5.88	6.13	5.90	6.15	5.93	6.43	5.95	6.45
	End-Month	5.74	6.24	5.75	6.25	5.77	6.27	5.89	6.14	5.91	6.16	5.92	6.42	5.94	6.44
Jun	Month Average	5.73	6.23	5.75	6.25	5.77	6.27	5.89	6.14	5.90	6.15	5.94	6.44	5.96	6.46
	End-Month	5.73	6.23	5.75	6.25	5.76	6.26	5.89	6.14	5.90	6.15	5.94	6.44	5.96	6.46
Jul	Month Average	5.71	6.21	5.75	6.25	5.77	6.27	5.89	6.14	5.89	6.14	5.94	6.44	5.96	6.46
	End-Month	5.71	6.21	5.75	6.25	5.78	6.28	5.89	6.14	5.90	6.15	5.94	6.44	5.96	6.46
Aug	Month Average	5.70	6.20	5.73	6.23	5.76	6.26	5.89	6.14	5.90	6.15	5.94	6.44	5.96	6.46
	End-Month	5.68	6.18	5.72	6.22	5.76	6.26	5.89	6.14	5.90	6.15	5.94	6.44	5.96	6.46
Sep	Month Average	5.70	6.20	5.73	6.23	5.76	6.26	5.90	6.15	5.91	6.16	5.95	6.45	5.97	6.47
	End-Month	5.70	6.20	5.74	6.24	5.76	6.26	5.90	6.15	5.91	6.16	5.95	6.45	5.97	6.47

KIBOR :Karachi Interbank Offered Rate

Source: Reuters

Archive Link: http://www.sbp.org.pk/ecodata/kibor_index.asp

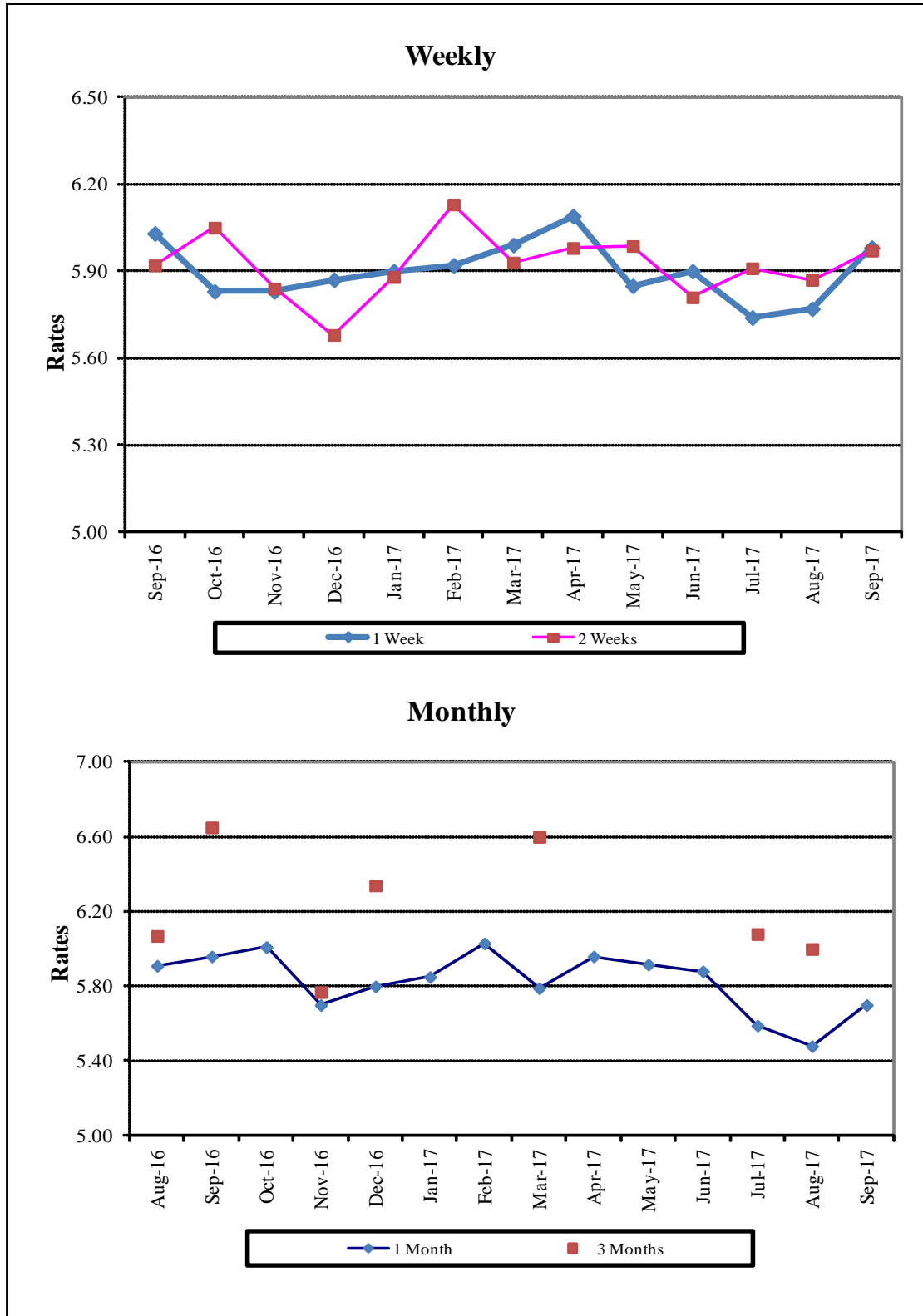
6.7 Inter-Bank Weighted Average Call Rates

		(Per Annum)					
PERIODS		Overnight	1 Week	2 Weeks	1 Month	3 Months	6 Months
2016	Sep	5.96	6.03	5.92	5.87	6.65	-
	Oct	5.75	5.83	6.05	6.01	-	5.68
	Nov	5.77	5.83	5.84	5.70	5.77	6.35
	Dec	5.69	5.87	5.68	5.80	6.34	5.79
2017	Jan	5.85	5.90	5.88	5.85	-	5.65
	Feb	5.74	5.92	6.13	6.03	-	-
	Mar	5.90	5.99	5.93	5.79	6.60	5.77
	Apr	5.87	6.09	5.98	5.96	-	-
	May	5.78	5.85	5.99	5.92	-	6.35
	Jun	5.79	5.90	5.81	5.88	-	-
	Jul	5.77	5.74	5.91	5.59	6.08	-
	Aug	5.76	5.77	5.87	5.48	6.00	5.80
	Sep	5.84	5.98	5.97	5.70	-	5.81

Source: Domestic Markets & Monetary Management Department, SBP

Note: Weighted Average Call Rates of all the call deals executed during the month.

Inter- Bank Weighted Average Call Rates



6.8 SBP Mark to Market Rates Major Currencies

Date	US Dollar			Euro			Japanese Yen			UK Pound Sterling		
	Ready	1Week	1 Month	Ready	1Week	1 Month	Ready	1Week	1 Month	Ready	1Week	1 Month
5-Sep-17	105.4067	105.4868	105.7076	125.2495	125.3879	125.8268	0.9632	0.9642	0.9674	136.2593	136.3914	136.8017
6-Sep-17	105.4029	105.4860	105.7007	125.9142	126.0569	126.4830	0.9697	0.9707	0.9739	137.5033	137.6406	138.0408
7-Sep-17	105.4075	105.4684	105.6978	126.1675	126.2838	126.7144	0.9676	0.9685	0.9716	137.6621	137.7703	138.1812
8-Sep-17	105.4122	105.4440	105.6425	127.0955	127.1779	127.5740	0.9785	0.9791	0.9820	138.7171	138.7878	139.1594
11-Sep-17	105.4024	105.4716	105.6673	126.6252	126.7524	127.1458	0.9718	0.9727	0.9755	138.9995	139.1193	139.4872
12-Sep-17	105.4073	105.4795	105.6815	126.0460	126.1771	126.5904	0.9606	0.9616	0.9646	139.7068	139.8322	140.2191
13-Sep-17	105.4085	105.4734	105.6609	126.2319	126.3540	126.7435	0.9570	0.9579	0.9607	139.8981	140.0136	140.3753
14-Sep-17	105.4064	105.4653	105.6727	125.4494	125.5638	125.9676	0.9546	0.9554	0.9583	139.1153	139.2223	139.6038
15-Sep-17	105.4064	105.4684	105.6606	125.9133	126.0309	126.4171	0.9482	0.9490	0.9518	142.9311	143.0448	143.4159
18-Sep-17	105.4094	105.4890	105.6854	125.8852	126.0243	126.4161	0.9465	0.9475	0.9503	142.9141	143.0532	143.4324
19-Sep-17	105.4104	105.4925	105.6985	126.3344	126.4781	126.8985	0.9442	0.9453	0.9483	142.2092	142.3519	142.7525
20-Sep-17	105.4068	105.4932	105.7104	126.6147	126.7646	127.1920	0.9467	0.9477	0.9508	143.0160	143.1652	143.5791
21-Sep-17	105.4140	105.5000	105.7323	125.5481	125.7047	126.1306	0.9378	0.9389	0.9419	142.3616	142.5186	142.9347
22-Sep-17	105.4180	105.5030	105.7305	126.3382	126.4957	126.9200	0.9414	0.9426	0.9456	142.9784	143.1351	143.5470
25-Sep-17	105.4219	105.5065	105.7261	125.4098	125.5723	125.9880	0.9400	0.9412	0.9442	142.6305	142.7910	143.1946
26-Sep-17	105.4266	105.5046	105.7117	124.6564	124.8109	125.2211	0.9438	0.9449	0.9479	142.0412	142.1953	142.5887
27-Sep-17	105.4287	105.4990	105.6983	123.7944	123.9430	124.3427	0.9338	0.9349	0.9377	141.2059	141.3564	141.7396
28-Sep-17	105.4166	105.4880	105.7080	124.0490	124.1880	124.5993	0.9344	0.9354	0.9383	140.9368	141.0719	141.4714
29-Sep-17	105.4094	105.4597	105.6711	124.3515	124.4570	124.8632	0.9367	0.9375	0.9405	141.0062	141.1059	141.4961

Source: Domestic Markets & Monetary Management Department, SBP

6.8 SBP Mark to Market Rates Major Currencies

Date	Swiss Frank			Australian Dollar			Saudi Arabian Riyal			Kuwaiti Dinar		
	Ready	1Week	1 Month	Ready	1Week	1 Month	Ready	1Week	1 Month	Ready	1Week	1 Month
5-Sep-17	109.7644	109.8942	110.3155	83.9933	84.0519	84.2024	28.1062	28.1268	28.1849	349.5787	349.8167	350.5004
6-Sep-17	110.5141	110.6481	111.0586	84.1747	84.2356	84.3822	28.1052	28.1266	28.1820	349.5949	349.8459	350.5071
7-Sep-17	110.6524	110.7633	111.1742	84.4894	84.5315	84.6909	28.1064	28.1219	28.1804	349.6336	349.8117	350.5104
8-Sep-17	111.2001	111.2806	111.6609	85.3680	85.3871	85.5233	28.1084	28.1162	28.1657	350.3232	350.4027	351.0127
11-Sep-17	111.0201	111.1397	111.5166	84.8279	84.8771	85.0115	28.1062	28.1239	28.1727	349.8837	350.0870	350.6758
12-Sep-17	110.1434	110.2662	110.6611	84.6104	84.6619	84.7990	28.1064	28.1249	28.1754	349.6676	349.8830	350.4907
13-Sep-17	109.7719	109.8864	110.2565	84.7326	84.7778	84.9030	28.1074	28.1240	28.1706	349.6715	349.8652	350.4223
14-Sep-17	109.0655	109.1724	109.5533	84.3989	84.4383	84.5817	28.1069	28.1218	28.1738	349.4908	349.6598	350.2867
15-Sep-17	109.7984	109.9094	110.2776	84.5729	84.6139	84.7430	28.1069	28.1230	28.1702	349.7810	349.9605	350.5373
18-Sep-17	109.8129	109.9422	110.3132	84.4224	84.4771	84.6088	28.1077	28.1281	28.1786	349.7910	350.0285	350.6283
19-Sep-17	109.3583	109.4901	109.8854	84.2440	84.3014	84.4397	28.1079	28.1291	28.1803	349.8521	350.1040	350.7247
20-Sep-17	109.8045	109.9422	110.3433	84.8367	84.8986	85.0493	28.1070	28.1293	28.1834	349.8401	350.1059	350.7683
21-Sep-17	108.4897	108.6350	109.0303	83.9043	83.9647	84.1273	28.1089	28.1311	28.1889	349.5740	349.8548	350.5597
22-Sep-17	108.8579	109.0025	109.3948	83.9127	83.9735	84.1311	28.1100	28.1319	28.1880	349.7612	350.0285	350.7282
25-Sep-17	108.4141	108.5625	108.9449	83.9053	83.9654	84.1170	28.1110	28.1328	28.1895	349.4612	349.7298	350.3997
26-Sep-17	108.6760	108.8182	109.2038	83.5137	83.5682	83.7068	28.1123	28.1323	28.1857	349.5577	349.8047	350.4244
27-Sep-17	108.1653	108.3030	108.6834	82.6983	82.7468	82.8796	28.1128	28.1301	28.1824	349.2173	349.4384	350.0331
28-Sep-17	108.2417	108.3716	108.7566	82.4727	82.5224	82.6710	28.1096	28.1281	28.1850	348.8884	349.1127	349.7720
29-Sep-17	108.5464	108.6470	109.0304	82.6515	82.6843	82.8239	28.1073	28.1199	28.1748	349.0381	349.1900	349.8234

Source: Domestic Markets & Monetary Management Department, SBP

Archive Link: <http://www.sbp.org.pk/ecodata/rates/m2m/M2M-History.asp>

6.9 Secondary Market Transactions in Government Securities

(Billion Rupees)

SECURITIES / TRANSACTIONS	2016				2017									
	Sep	Oct	Nov	Dec	Jan	Feb	Mar	Apr	May	Jun	Jul	Aug	Sep	
PIBs														
Purchases	3,426.9	2,359.0	2,019.3	2,696.1	2,392.6	2,520.5	2,705.6	5,354.8	3,067.1	3,413.3	2,427.3	2,166.5	2,712.5	
Non Banks	Repo	2.2	3.8	14.3	18.3	14.6	11.8	4.8	1.8	4.1	3.1	7.5	4.6	10.1
	outright	58.0	30.6	53.0	49.6	53.6	36.5	33.3	43.3	32.3	16.3	74.7	28.4	51.0
Banks/PDs	Repo	72.9	88.0	230.3	188.7	225.0	162.9	210.7	120.2	204.6	116.9	139.3	123.6	77.8
	outright	356.9	138.0	159.4	343.9	299.9	256.3	283.1	507.5	207.9	170.2	299.1	100.9	174.7
SBP	Repo	2,936.9	2,098.7	1,562.3	2,095.6	1,799.5	2,053.1	2,173.7	4,682.1	2,618.2	3,106.7	1,906.7	1,909.0	2,398.9
Sales		3,426.9	2,359.0	2,019.3	2,696.1	2,392.6	2,520.5	2,705.6	5,354.8	3,067.1	3,413.3	2,427.3	2,166.5	2,712.5
Non Banks	Repo	35.7	55.3	100.2	72.0	78.0	59.3	92.3	84.8	101.9	33.8	26.2	22.7	15.1
	outright	67.5	25.1	45.2	52.9	22.7	28.5	88.7	98.7	60.5	35.6	30.6	14.7	50.5
Banks/PDs	Repo	2,976.3	2,135.1	1,706.7	2,230.7	1,961.1	2,168.5	2,297.0	4,719.3	2,725.0	3,192.9	2,027.3	2,014.4	2,471.7
	outright	347.4	143.5	167.2	340.5	330.8	264.2	227.7	452.0	179.7	150.9	343.2	114.6	175.2
SBP	Repo	-	-	-	-	-	-	-	-	-	-	-	-	-
Net Position		-	-	-	-	-	-	-	-	-	-	-	-	-
Treasury Bills														
Purchases		4,828.1	3,901.7	3,596.4	4,760.6	4,493.0	4,574.7	5,391.0	4,743.2	5,886.5	6,829.6	6,704.7	8,074.0	8,904.6
Non Banks	Repo	34.4	58.2	92.2	158.8	104.8	72.1	53.4	24.5	82.8	84.5	50.9	59.4	64.2
	outright	119.5	96.9	174.4	174.9	155.7	254.9	174.0	52.0	188.7	114.4	287.4	278.5	138.6
Banks/PDs	Repo	1,244.5	1,308.2	1,380.5	1,693.9	1,482.7	1,869.6	1,231.9	1,490.4	1,869.6	1,870.2	1,418.9	1,695.8	1,646.3
	outright	425.3	548.5	413.9	557.5	560.7	832.9	692.6	289.2	1,060.0	682.6	1,048.6	1,973.7	1,680.1
SBP	Repo	3,004.4	1,889.9	1,535.4	2,175.6	2,189.1	1,545.2	3,239.2	2,887.1	2,685.5	4,077.9	3,898.8	4,066.7	5,375.4
Sales		4,828.1	3,901.7	3,596.4	4,760.6	4,493.0	4,574.7	5,391.0	4,743.2	5,886.5	6,829.6	6,704.7	8,074.0	8,904.6
Non Banks	Repo	146.3	155.7	91.2	93.7	88.1	103.1	130.6	72.6	153.0	68.0	128.6	117.1	76.5
	outright	75.4	46.4	60.5	189.8	45.9	79.9	145.3	58.2	118.6	153.0	75.6	140.5	150.3
Banks/PDs	Repo	4,137.0	1,137.4	2,891.2	3,772.9	3,688.5	2,946.1	4,371.0	4,017.4	4,311.8	5,906.0	5,240.0	5,704.8	6,967.8
	outright	469.4	2,460.8	527.8	542.6	670.5	1,008.0	721.3	283.0	1,130.1	644.0	1,260.4	2,111.6	1,668.4
SBP	Repo	-	101.5	25.7	161.7	-	437.7	22.8	312.1	173.0	58.7	-	-	41.5
Net Position		-	-	-	-	-	-	-	-	-	-	-	-	-

PDs: Primary Dealers

Source: Domestic Markets & Monetary Management Department, SBP

Note: Month-wise volume of repo/outright transactions during the month.