

6.1 Government of Pakistan Treasury Bills

	Million Rupees									
	2016				2017					
	Jun	Sep	Oct	Dec	Jun	Jul	Aug	Sep	Oct	
3 Months Treasury Bills										
Issue	40,899.8	106,240.1	89,247.1	259,517.6	287,915.3	1,154,468.8	1,524,140.5	737,433.9	1,497,491.0	
Discount Allowed	556.9	1,432.0	1,206.3	3,555.9	3,969.6	15,917.1	21,013.1	10,167.4	20,646.7	
Discharged	21,042.0	61,417.3	165,422.4	40,039.1	238,038.4	548,760.2	556,269.0	670,940.0	1,323,314.9	
Discount Paid	298.3	820.9	2,215.5	539.7	3,263.1	7,553.0	7,669.5	9,250.6	18,244.1	
Outstanding Balance	242,874.9	384,512.9	308,337.6	815,942.2	1,364,405.8	1,970,114.4	2,937,985.9	3,004,479.8	3,178,655.9	
6 Months Treasury Bills										
Issue	161,548.7	117,642.1	28,700.4	47,523.1	222,002.7	445,475.6	326,659.1	97,270.5	34,823.4	
Discount Allowed	4,696.6	3,463.6	845.0	1,416.5	6,653.9	13,351.9	9,789.7	2,915.4	1,043.7	
Discharged	41,671.8	141,961.3	25,367.2	161,548.7	47,523.1	490,016.4	649,715.8	211,058.2	87,051.6	
Discount Paid	1,312.1	4,382.2	780.8	4,764.6	1,416.5	14,502.5	19,382.2	6,304.7	2,608.0	
Outstanding Balance	816,882.6	1,267,203.6	1,270,536.8	1,049,790.1	1,838,875.8	1,794,335.0	1,471,278.3	1,357,490.6	1,305,262.5	
12 Months Treasury Bills										
Issue	129,847.6	75,422.1	52,114.7	-	5,652.8	16,251.3	19,178.5	9,549.3	-	
Discount Allowed	7,711.2	4,448.3	3,074.0	-	340.7	978.6	1,154.9	574.7	-	
Discharged	7,620.8	70,197.8	157,318.2	940.7	129,847.6	224,113.8	195,810.9	43,011.3	52,114.7	
Discount Paid	519.4	4,879.5	10,050.0	59.3	7,711.2	13,053.1	11,530.5	2,536.5	3,074.0	
Outstanding Balance	1,712,268.0	1,697,923.4	1,592,719.9	1,537,189.6	884,431.4	676,568.9	499,936.4	466,474.4	414,359.7	

Source: Domestic Markets & Monetary Management Department SBP

Note: Six months Government of Pakistan Treasury Bills restarted w. e. f. June 1998 and 3 & 12 Months Government of Pakistan Treasury Bills restarted w.e.f July 1998.

6.2 Sale / Purchase of Treasury Bills under Open Market Operation by SBP with Banks

SALE

(Billion Rupees)

PERIODS	2013-14		2014-15		2015-16		2016-17		2017-18	
	Bid Amount		Bid Amount		Bid Amount		Bid Amount		Bid Amount	
	Offered	Accepted	Offered	Accepted	Offered	Accepted	Offered	Accepted	Offered	Accepted
July	161.5	142.4	173.7	166.7	169.5	169.5	-	-	-	-
August	763.3	725.2	-	-	-	-	138.0	109.0	-	-
September	913.0	689.8	-	-	54.5	21.0	-	-	63.0	38.0
October	72.8	54.0	-	-	41.5	28.0	179.7	95.5	113.8	105.0
November	702.4	668.0	-	-	-	-	-	-	-	-
December	-	-	-	-	63.3	43.0	178.7	150.0	-	-
January	-	-	-	-	-	-	-	-	-	-
February	173.3	129.1	122.9	122.6	-	-	59.0	20.9	-	-
March	103.0	69.0	-	-	121.0	95.1	-	-	-	-
April	53.0	35.0	351.2	303.1	116.9	61.9	-	-	-	-
May	72.0	54.2	160.3	137.8	120.5	83.6	-	-	-	-
June	330.3	289.1	59.3	46.5	66.8	44.3	51.6	40.0	-	-
Average										
per month	278.7	238.0	72.3	64.7	62.8	45.5	50.6	34.6	44.2	35.8
per day	9.3	7.9	2.4	2.2	2.1	1.5	1.69	1.15	1.47	1.19

PURCHASE

PERIODS	2013-14		2014-15		2015-16		2016-17		2017-18	
	Amount		Amount		Amount		Amount		Amount	
	Offered	Offered	Offered	Injected	Offered	Injected	Offered	Injected	Offered	Injected
July	694.8	631.3	380.6	342.7	4,335.1	4,200.5	6,965.6	6,655.1	6,181.3	5,797.7
August	-	-	220.6	183.3	4,637.3	4,553.5	3,951.0	3,873.5	6,066.4	5,940.3
September	-	-	506.2	414.7	6,602.8	5,818.4	6,206.9	5,870.9	7,881.6	7,733.5
October	189.5	136.3	633.8	603.8	7,058.8	6,668.1	4,024.4	3,960.4	6,245.0	5,968.4
November	234.3	121.5	1,183.6	1,161.1	5,432.5	5,318.9	3,242.3	3,096.9	-	-
December	397.6	241.1	2,198.8	2,147.7	6,465.0	6,121.8	4,551.0	4,234.6	-	-
January	459.5	263.0	3,058.2	3,007.4	4,863.4	4,598.6	4,099.7	3,878.5	-	-
February	359.10	348.10	2,915.7	2,850.7	5,585.2	5,253.8	4,127.9	3,953.7	-	-
March	860.6	520.1	4,484.6	4,290.6	7,165.9	6,908.0	5,537.5	5,373.8	-	-
April	1,152.0	1,033.7	4,249.7	4,053.6	6,258.7	6,108.9	5,270.7	5,195.4	-	-
May	1,641.7	1,431.5	3,509.4	3,462.4	5,158.8	5,105.8	5,374.6	5,278.7	-	-
June	212.7	199.4	2,515.9	2,506.9	7,564.2	6,943.7	7,385.0	7,049.8	-	-
Average										
per month	516.8	410.5	2,154.7	2,085.4	5,927.3	5,633.3	5,061.4	4,868.4	6,593.5	6,360.0
per day	17.2	13.7	71.8	69.5	197.6	187.8	168.7	162.3	219.8	212.0

Source: Domestic Markets & Monetary Management Department, SBP

6.3 SBP Overnight Repo/ Reverse Repo Facilities

Cash Accommodation

(Million Rupees)

PERIODS	2013-14		2014-15		2015-16		2016-17		2017-18	
	SBP Overnight Reverse Repo (Ceiling)	SBP Overnight Repo (Floor)	SBP Overnight Reverse Repo (Ceiling)	SBP Overnight Repo (Floor)	SBP Overnight Reverse Repo (Ceiling)	SBP Overnight Repo (Floor)	SBP Overnight Reverse Repo (Ceiling)	SBP Overnight Repo (Floor)	SBP Overnight Reverse Repo (Ceiling)	SBP Overnight Repo (Floor)
July	171,300	45,400	190,400	48,150	244,850	6,400	164,950	6,650	7,800	-
August	31,550	54,500	137,950	45,000	137,300	1,000	269,000	5,200	37,200	-
September	47,700	319,100	362,450	70,300	540,000	81,850	70,500	-	40,800	3,500
October	327,700	22,000	244,650	314,950	204,100	7,700	28,100	6,000	67,000	13,500
November	228,250	177,800	343,700	-	76,600	2,000	800	25,650		
December	421,950	-	582,050	54,400	298,100	61,650	36,650	11,700		
January	389,100	34,000	314,550	7,250	121,600	-	110,100	-		
February	307,000	203,800	74,450	63,250	96,200	18,350	11,600	33,900		
March	863,000	2,100	142,500	-	288,600	92,400	39,100	22,800		
April	423,050	8,000	139,650	87,250	77,900	-	45,000	61,800		
May	791,000	80,350	43,750	-	44,000	4,000	25,000	173,000		
June	83,150	137,200	118,850	38,900	625,500	255,000	134,850	18,650		
Average										
per month	340,396	90,354	224,579	60,788	229,563	44,196	77,971	30,446	38,200	4,250
per day	11,347	3,012	7,486	2,026	7,652	1,473	2,599	1,015	1,273	142

SBP Overnight Repo/ Reverse Repo Rates

(Percent per annum)

PERIODS	2013-14		2014-15		2015-16		2016-17		2017-18	
	SBP Reverse Repo Rate ¹ (Ceiling)	SBP Repo Rate ² (Floor)	SBP Reverse Repo Rate ¹ (Ceiling)	SBP Repo Rate ² (Floor)	SBP Reverse Repo Rate ¹ (Ceiling)	SBP Repo Rate ² (Floor)	SBP Reverse Repo Rate ¹ (Ceiling)	SBP Repo Rate ² (Floor)	SBP Reverse Repo Rate ¹ (Ceiling)	SBP Repo Rate ² (Floor)
July	9.0	6.5	10.0	7.5	7.00	5.00	6.25	4.25	6.25	4.25
August	9.0	6.5	10.0	7.5	7.00	5.00	6.25	4.25	6.25	4.25
September	9.5	7.0	10.0	7.5	6.50	4.50	6.25	4.25	6.25	4.25
October	9.5	7.0	10.0	7.5	6.50	4.50	6.25	4.25	6.25	4.25
November	10.0	7.5	9.5	7.0	6.50	4.50	6.25	4.25		
December	10.0	7.5	9.5	7.0	6.50	4.50	6.25	4.25		
January	10.0	7.5	8.5	6.0	6.50	4.50	6.25	4.25		
February	10.0	7.5	8.5	6.0	6.50	4.50	6.25	4.25		
March	10.0	7.5	8.0	5.5	6.50	4.50	6.25	4.25		
April	10.0	7.5	8.0	5.5	6.50	4.50	6.25	4.25		
May	10.0	7.5	7.0	5.0	6.25	4.25	6.25	4.25		
June	10.0	7.5	7.0	5.0	6.25	4.25	6.25	4.25		

Source: Domestic Markets & Monetary Management Department, SBP

NOTE:1. SBP 3-day repo rate was renamed as SBP reverse repo rate w.e.f. August 17, 2009. SBP reverse repo rate (also known as policy rate or discount rate) is the rate at which banks borrow from SBP on an overnight basis.

2.SBP Repo rate (introduced w.e.f. August 17, 2009) is the rate at which banks deposit their end-of-day excess cash with SBP on an overnight basis.

6.4 Auction of Government of Pakistan Market Treasury Bills

(Million Rupees)

AUCTION SETTLEMENT DATE	3 Months Treasury Bills				6 Months Treasury Bills				12 Months Treasury Bills			
	Amount Offered	Amount Accepted	Cut-off Yield (%)	Weighted Average (%)	Amount Offered	Amount Accepted	Cut-off Yield (%)	Weighted Average (%)	Amount Offered	Amount Accepted	Cut-off Yield (%)	Weighted Average (%)
2016												
1-Sep-16	128,243	67,093	5.8571	5.8571	144,655	82,855	5.9046	5.9046	47,323	34,323	5.9148	5.9148
15-Sep-16	47,934	19,534	5.8571	5.8571	47,927	35,327	5.9046	5.9046	38,213	34,213	5.9148	5.9131
29-Sep-16	53,430	21,045	5.8571	5.8571	20,974	2,924	5.9046	5.9046	16,085	11,335	5.9148	5.9148
13-Oct-16	70,217	14,917	5.8571	5.8571	37,481	27,181	5.9046	5.9046	37,179	33,279	5.9148	5.9148
27-Oct-16	128,336	75,536	5.9017	5.8777	42,664	2,364	5.9046	5.9046	23,410	21,910	5.9148	5.9148
10-Nov-16	298,590	278,190	5.9463	5.9189	87,970	32,770	5.9471	5.9243	27,056	Bids Rej.	Bids Rej.	Bids Rej.
24-Nov-16	264,069	195,363	5.9463	5.9463	195,991	105,891	5.9471	5.944	38,657	11,566	5.9485	5.9485
8-Dec-16	233,050	154,225	5.9463	5.9463	74,275	2,775	5.9471	5.9471	2,877	Bids Rej.	Bids Rej.	Bids Rej.
22-Dec-16	123,848	108,848	5.991	5.9649	76,165	45,165	6.0109	5.9792	2,525	Bids Rej.	Bids Rej.	Bids Rej.
2017												
5-Jan-17	185,949	14,631	5.9463	5.9463	362,756	223,851	5.9896	5.9758	109,826	25,665	5.9935	5.9935
19-Jan-17	280,380	161,651	5.9017	5.8821	635,868	280,668	5.9258	5.9033	208,235	112,528	5.9598	5.9313
2-Feb-17	385,376	297,326	5.9463	5.9211	269,956	248,956	5.9896	5.9714	104,535	75,535	5.9935	5.9489
16-Feb-17	379,251	292,101	5.9463	5.9417	226,073	214,073	5.9896	5.9893	155,829	152,829	5.9935	5.9927
2-Mar-17	264,139	196,776	5.9463	5.9463	223,819	206,069	5.9896	5.9896	5,038	3,038	5.9935	5.9935
16-Mar-17	199,202	146,552	5.9463	5.9463	170,809	146,309	5.9896	5.9896	20,775	Bids Rej.	Bids Rej.	Bids Rej.
30-Mar-17	100,249	94,749	5.991	5.9718	108,054	71,054	6.0109	5.9934	975	No Bids Rec.	No Bids Rec.	No Bids Rec.
13-Apr-17	284,838	270,838	5.991	5.9753	68,238	Bids Rej.	Bids Rej.	Bids Rej.	2,825	Bids Rej.	Bids Rej.	Bids Rej.
27-Apr-17	287,575	285,475	5.991	5.9851	99,660	89,660	6.0109	6.0082	36,819	7,819	6.027	5.9992
11-May-17	300,376	275,526	5.991	5.991	126,951	99,451	6.0109	6.0109	7,050	3,550	6.0273	6.0273
25-May-17	274,080	259,480	5.991	5.991	111,446	84,946	6.0109	6.0109	23,252	3,252	6.0499	6.0499
8-Jun-17	73,932	28,932	5.991	5.9904	193,368	133,368	6.0109	6.0109	5,438	2,938	6.0499	6.0499
22-Jun-17	309,953	262,953	5.991	5.991	113,789	95,289	6.0109	6.0109	5,056	3,056	6.0386	6.0386
6-Jul-17	462,988	417,238	5.991	5.991	156,013	127,013	6.0109	6.0109	17,666	10,666	6.0386	6.0386
20-Jul-17	761,148	753,148	5.991	5.9909	332,314	331,814	6.0109	6.0109	16,814	15,857	6.0386	6.0381
03-Aug-17	605,111	588,411	5.9910	5.9902	142,958	138,708	6.0109	6.0093	25,887	19,637	5.9910	6.0109
17-Aug-17	539,264	515,264	5.9910	5.9910	122,519	110,769	6.0109	6.0109	1,326	Bids Rejected	5.9910	6.0109
31-Aug-17	447,978	441,478	5.9910	5.9910	93,972	86,972	6.0109	6.0109	2,697	697	5.9910	6.0109
14-Sep-17	358,166	351,466	5.9910	5.9910	24,296	19,796	6.0109	6.0109	6,271	6,271	5.9910	6.0109
28-Sep-17	402,636	396,136	5.9910	5.9910	100,390	80,390	6.0109	6.0109	3,853	3,853	5.9910	6.0109
12-Oct-17	842,848	806,848	5.9910	5.9910	6,266	6,266	6.0109	6.0109	No Bids Rec	No Bids Rec	No Bids Rec	No Bids Rec
26-Oct-17	941,746	711,290	5.9910	5.9910	29,602	29,602	6.0109	6.0109	No Bids Rec	No Bids Rec	No Bids Rec	No Bids Rec

Source: Domestic Markets & Monetary Management Department, SBP

6.5 Auction of Pakistan Investment Bonds (PIBs)

(Million Rupees)							
AUCTION SETTLEMENT DATE	Tenure	Coupon Rate (%)	Amount Offered	Amount Accepted	Price Accepted = Rs.100	Cut-off Yield Accepted (%)	Weighted Yield Average Accepted (%)
18-May-17	3-Years	7.00	55,564.00	33,864.00	101.40	6.4060	6.3992
	5-Years	7.75	17,988.50	5,238.50	103.31	6.8974	6.8902
	10-Years	8.75	9,422.00	1,114.00	105.39	7.9358	7.9358
	20-Years	10.75	-	-	-	-	-
15-Jun-17	3-Years	7.00	74,422.90	68,322.90	101.37	6.4050	6.4043
	5-Years	7.75	7,200.00	3,500.00	103.27	6.8974	6.8952
	10-Years	8.75	8,910.00	3,210.00	105.37	7.9358	7.9356
	20-Years	10.75	-	-	-	-	-
26-Jul-17	3-Years	7.00	37,776.00	23,376.00	101.30	6.4091	6.4029
	5-Years	7.75	15,150.00	10,150.00	103.20	6.8961	6.8960
	10-Years	8.75	23,445.00	22,095.00	105.32	7.9360	7.9359
	20-Years	10.75	-	-	-	-	-
24-Aug-17	3-Years	7.00	20,117.90	-	-	-	-
	5-Years	7.75	2,526.50	-	-	-	-
	10-Years	8.75	3,191.50	-	-	-	-
	20-Years	10.75	-	-	-	-	-
21-Sep-17	3-Years	7.00	2,926.00	-	-	-	-
	5-Years	7.75	750.00	-	-	-	-
	10-Years	8.75	2,133.90	-	-	-	-
	20-Years	10.75	-	-	-	-	-
19-Oct-17	3-Years	7.00	21,680.00	-	-	-	-
	5-Years	7.75	1,515.00	-	-	-	-
	10-Years	8.75	1,554.40	-	-	-	-
	20-Years	10.75	-	-	-	-	-

Source: Domestic Markets & Monetary Management Department, SBP

6.6 KIBOR

(Percent per annum)

PERIODS		1 Week		2 Weeks		1Month		3 Months		6 Months		9 Months		12 Months	
		Bid	Offer	Bid	Offer	Bid	Offer	Bid	Offer	Bid	Offer	Bid	Offer	Bid	Offer
2016															
Oct	Month Average	5.66	6.16	5.69	6.19	5.73	6.23	5.78	6.03	5.80	6.05	5.84	6.34	5.87	6.37
	End-Month	5.68	6.18	5.71	6.21	5.74	6.24	5.79	6.04	5.80	6.05	5.84	6.34	5.88	6.38
Nov	Month Average	5.69	6.19	5.71	6.21	5.75	6.25	5.82	6.07	5.84	6.09	5.87	6.37	5.90	6.40
	End-Month	5.72	6.22	5.73	6.23	5.76	6.26	5.85	6.10	5.87	6.12	5.89	6.39	5.91	6.41
Dec	Month Average	5.72	6.22	5.74	6.24	5.75	6.25	5.85	6.10	5.89	6.14	5.90	6.40	5.93	6.43
	End-Month	5.72	6.22	5.75	6.25	5.76	6.26	5.87	6.12	5.90	6.15	5.91	6.41	5.94	6.44
2017	Jan														
	Month Average	5.73	6.23	5.75	6.25	5.75	6.25	5.84	6.09	5.87	6.12	5.88	6.38	5.91	6.41
	End-Month	5.74	6.24	5.76	6.26	5.76	6.26	5.84	6.09	5.87	6.12	5.88	6.38	5.90	6.40
Feb	Month Average	5.73	6.23	5.75	6.25	5.76	6.26	5.84	6.09	5.88	6.13	5.89	6.39	5.91	6.41
	End-Month	5.75	6.25	5.75	6.25	5.76	6.26	5.82	6.07	5.87	6.12	5.90	6.40	5.91	6.41
Mar	Month Average	5.73	6.23	5.75	6.25	5.76	6.26	5.83	6.08	5.88	6.13	5.90	6.40	5.91	6.41
	End-Month	5.76	6.26	5.76	6.26	5.77	6.27	5.87	6.12	5.91	6.16	5.92	6.42	5.94	6.44
Apr	Month Average	5.75	6.25	5.76	6.26	5.77	6.27	5.89	6.14	5.91	6.16	5.94	6.44	5.97	6.47
	End-Month	5.76	6.26	5.77	6.27	5.79	6.29	5.89	6.14	5.92	6.17	5.94	6.44	5.97	6.47
May	Month Average	5.73	6.23	5.75	6.25	5.77	6.27	5.88	6.13	5.90	6.15	5.93	6.43	5.95	6.45
	End-Month	5.74	6.24	5.75	6.25	5.77	6.27	5.89	6.14	5.91	6.16	5.92	6.42	5.94	6.44
Jun	Month Average	5.73	6.23	5.75	6.25	5.77	6.27	5.89	6.14	5.90	6.15	5.94	6.44	5.96	6.46
	End-Month	5.73	6.23	5.75	6.25	5.76	6.26	5.89	6.14	5.90	6.15	5.94	6.44	5.96	6.46
Jul	Month Average	5.71	6.21	5.75	6.25	5.77	6.27	5.89	6.14	5.89	6.14	5.94	6.44	5.96	6.46
	End-Month	5.71	6.21	5.75	6.25	5.78	6.28	5.89	6.14	5.90	6.15	5.94	6.44	5.96	6.46
Aug	Month Average	5.70	6.20	5.73	6.23	5.76	6.26	5.89	6.14	5.90	6.15	5.94	6.44	5.96	6.46
	End-Month	5.68	6.18	5.72	6.22	5.76	6.26	5.89	6.14	5.90	6.15	5.94	6.44	5.96	6.46
Sep	Month Average	5.70	6.20	5.73	6.23	5.76	6.26	5.90	6.15	5.91	6.16	5.95	6.45	5.97	6.47
	End-Month	5.70	6.20	5.74	6.24	5.76	6.26	5.90	6.15	5.91	6.16	5.95	6.45	5.97	6.47
Oct	Month Average	5.70	6.20	5.73	6.23	5.76	6.26	5.90	6.15	5.92	6.17	5.96	6.46	5.97	6.47
	End-Month	5.73	6.23	5.75	6.25	5.77	6.27	5.89	6.14	5.92	6.17	5.95	6.45	5.96	6.46

KIBOR :Karachi Interbank Offered Rate

Source: Reuters

Archive Link: http://www.sbp.org.pk/ecodata/kibor_index.asp

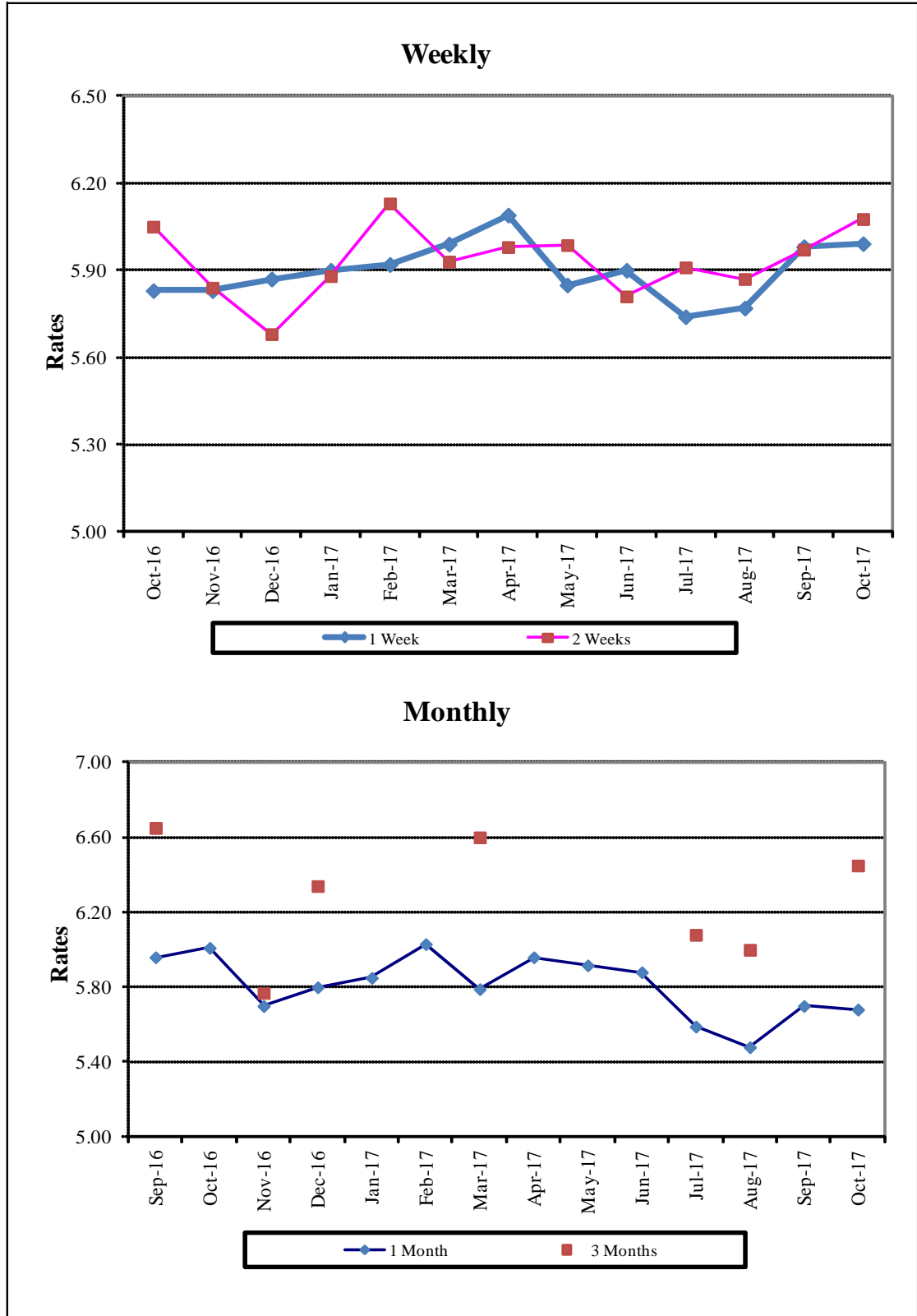
6.7 Inter-Bank Weighted Average Call Rates

		(Per Annum)					
PERIODS		Overnight	1 Week	2 Weeks	1 Month	3 Months	6 Months
2016	Oct	5.75	5.83	6.05	6.01	-	5.68
	Nov	5.77	5.83	5.84	5.70	5.77	6.35
	Dec	5.69	5.87	5.68	5.80	6.34	5.79
2017	Jan	5.85	5.90	5.88	5.85	-	5.65
	Feb	5.74	5.92	6.13	6.03	-	-
	Mar	5.90	5.99	5.93	5.79	6.60	5.77
	Apr	5.87	6.09	5.98	5.96	-	-
	May	5.78	5.85	5.99	5.92	-	6.35
	Jun	5.79	5.90	5.81	5.88	-	-
	Jul	5.77	5.74	5.91	5.59	6.08	-
	Aug	5.76	5.77	5.87	5.48	6.00	5.80
	Sep	5.84	5.98	5.97	5.70	-	5.81
	Oct	5.82	5.99	6.08	5.68	6.45	5.81

Source: Domestic Markets & Monetary Management Department, SBP

Note: Weighted Average Call Rates of all the call deals executed during the month.

Inter- Bank Weighted Average Call Rates



6.8 SBP Mark to Market Rates Major Currencies

Date	US Dollar			Euro			Japanese Yen			UK Pound Sterling		
	Ready	1Week	1 Month	Ready	1Week	1 Month	Ready	1Week	1 Month	Ready	1Week	1 Month
2-Oct-17	105.4266	105.4872	105.6699	123.8130	123.9321	124.3190	0.9345	0.9354	0.9381	140.3280	140.4429	140.8036
3-Oct-17	105.4234	105.4738	105.6607	123.8304	123.9355	124.3173	0.9322	0.9330	0.9356	139.6966	139.7966	140.1558
4-Oct-17	105.4104	105.4649	105.6630	123.9100	124.0182	124.4060	0.9366	0.9374	0.9401	139.8164	139.9209	140.2872
5-Oct-17	105.4059	105.4666	105.6600	123.9942	124.1099	124.4923	0.9358	0.9366	0.9393	138.9882	139.1008	139.4594
6-Oct-17	105.4238	105.4709	105.6514	123.3089	123.4088	123.7749	0.9329	0.9336	0.9363	137.8890	137.9836	138.3240
9-Oct-17	105.4340	105.4766	105.6573	123.8006	123.8949	124.2750	0.9362	0.9369	0.9395	138.5719	138.6606	139.0087
10-Oct-17	105.4396	105.4646	105.6342	124.1973	124.2716	124.6337	0.9380	0.9385	0.9411	139.0116	139.0778	139.4084
11-Oct-17	105.4200	105.4645	105.6390	124.5853	124.6851	125.0512	0.9391	0.9398	0.9423	139.0490	139.1436	139.4791
12-Oct-17	105.3918	105.4514	105.6287	124.9157	125.0324	125.4015	0.9379	0.9387	0.9412	139.5124	139.6259	139.9630
13-Oct-17	105.3547	105.4279	105.6086	124.6082	124.7395	125.1096	0.9395	0.9404	0.9430	140.1164	140.2453	140.5847
16-Oct-17	105.4013	105.4732	105.6618	124.2892	124.4189	124.8092	0.9426	0.9435	0.9463	140.2206	140.3491	140.7072
17-Oct-17	105.4119	105.4835	105.6676	124.0329	124.1615	124.5385	0.9400	0.9408	0.9435	139.7657	139.8929	140.2379
18-Oct-17	105.4068	105.4870	105.6814	123.6686	123.8061	124.1882	0.9355	0.9365	0.9391	138.6680	138.8055	139.1576
19-Oct-17	105.4182	105.4913	105.6836	124.4461	124.5754	124.9634	0.9353	0.9362	0.9389	138.6987	138.8260	139.1755
20-Oct-17	105.4330	105.4911	105.6764	124.4584	124.5710	124.9463	0.9304	0.9312	0.9338	138.6338	138.7421	139.0785
23-Oct-17	105.4362	105.5007	105.6916	123.8611	123.9814	124.3744	0.9259	0.9268	0.9295	138.9438	139.0609	139.4127
24-Oct-17	105.4454	105.5132	105.6974	123.9458	124.0699	124.4483	0.9272	0.9280	0.9306	138.8769	138.9982	139.3363
25-Oct-17	105.4505	105.5187	105.7193	124.0994	124.2239	124.6140	0.9235	0.9245	0.9271	139.0048	139.1248	139.4805
26-Oct-17	105.4383	105.5078	105.7082	124.5174	124.6439	125.0356	0.9277	0.9285	0.9313	139.2155	139.3358	139.6909
27-Oct-17	105.4068	105.4785	105.6703	122.5934	122.7211	123.0923	0.9243	0.9252	0.9277	138.0671	138.1891	138.5264
30-Oct-17	105.4223	105.4918	105.6867	122.6589	122.7840	123.1583	0.9283	0.9292	0.9318	138.7147	138.8330	139.1757
31-Oct-17	105.3608	105.4327	105.6256	122.6136	122.7411	123.1246	0.9303	0.9312	0.9338	139.2026	139.3241	139.6739

Source: Domestic Markets & Monetary Management Department, SBP

6.8 SBP Mark to Market Rates Major Currencies

Date	Swiss Frank			Australian Dollar			Saudi Arabian Riyal			Kuwaiti Dinar		
	Ready	1Week	1 Month	Ready	1Week	1 Month	Ready	1Week	1 Month	Ready	1Week	1 Month
2-Oct-17	108.5138	108.6273	108.9979	82.3803	82.4218	82.5398	28.1123	28.1279	28.1749	348.9214	349.1134	349.6572
3-Oct-17	108.0767	108.1782	108.5433	82.3093	82.3422	82.4633	28.1114	28.1245	28.1724	348.7956	348.9549	349.5078
4-Oct-17	108.2576	108.3599	108.7287	82.7630	82.7990	82.9309	28.1080	28.1219	28.1730	348.7525	348.9254	349.5117
5-Oct-17	107.9757	108.0840	108.4470	82.5328	82.5746	82.7025	28.1067	28.1224	28.1722	348.9683	349.1565	349.7285
6-Oct-17	107.6302	107.7244	108.0740	81.9406	81.9710	82.0881	28.1108	28.1228	28.1692	348.6815	348.8312	349.3595
9-Oct-17	107.7892	107.8791	108.2413	81.7746	81.8010	81.9153	28.1142	28.1250	28.1715	348.7617	348.8891	349.4192
10-Oct-17	107.8721	107.9454	108.2891	82.0478	82.0609	82.1679	28.1157	28.1221	28.1665	348.9644	349.0468	349.5760
11-Oct-17	108.1009	108.1964	108.5414	82.0695	82.0979	82.2100	28.1105	28.1221	28.1678	349.0151	349.1647	349.7059
12-Oct-17	108.1386	108.2490	108.5949	82.4111	82.4510	82.5652	28.1030	28.1185	28.1643	349.2109	349.4024	349.9608
13-Oct-17	108.0062	108.1286	108.4760	82.5559	82.6064	82.7236	28.0931	28.1123	28.1597	348.7411	348.9808	349.5473
16-Oct-17	108.0873	108.2080	108.5785	83.0193	83.0695	83.1912	28.1048	28.1237	28.1731	349.0341	349.2750	349.8619
17-Oct-17	107.8990	108.0187	108.3771	82.8274	82.8776	82.9973	28.1080	28.1267	28.1728	348.9194	349.1536	349.7331
18-Oct-17	107.4538	107.5811	107.9417	82.4387	82.4951	82.6230	28.1062	28.1273	28.1780	348.8560	349.1177	349.7301
19-Oct-17	107.7730	107.8937	108.2582	82.8745	82.9254	83.0518	28.1093	28.1285	28.1785	348.8012	349.0430	349.6490
20-Oct-17	107.3164	107.4223	107.7711	82.6753	82.7150	82.8362	28.1132	28.1284	28.1766	348.8506	349.0599	349.6381
23-Oct-17	106.8682	106.9795	107.3459	82.3298	82.3741	82.4973	28.1148	28.1317	28.1814	348.8953	349.1073	349.7202
24-Oct-17	106.8722	106.9872	107.3401	82.0260	82.0729	82.1914	28.1173	28.1351	28.1811	348.9260	349.1486	349.7419
25-Oct-17	106.2420	106.3561	106.7158	81.2391	81.2860	81.4180	28.1186	28.1359	28.1869	348.7697	348.9940	349.6381
26-Oct-17	106.4657	106.5813	106.9418	81.2560	81.3038	81.4363	28.1154	28.1336	28.1851	348.9025	349.1315	349.7888
27-Oct-17	105.3752	105.4921	105.8376	80.5572	80.6060	80.7307	28.1070	28.1258	28.1750	348.1073	348.3422	348.9659
30-Oct-17	105.7236	105.8390	106.1881	81.0223	81.0697	81.1981	28.1111	28.1294	28.1794	348.6769	348.9048	349.5277
31-Oct-17	105.6831	105.8010	106.1616	80.8064	80.8557	80.9814	28.0943	28.1120	28.1612	348.1850	348.4208	349.0546

Source: Domestic Markets & Monetary Management Department, SBP

Archive Link: <http://www.sbp.org.pk/ecodata/rates/m2m/M2M-History.asp>

6.9 Secondary Market Transactions in Government Securities

(Billion Rupees)

SECURITIES / TRANSACTIONS	2016			2017										
	Oct	Nov	Dec	Jan	Feb	Mar	Apr	May	Jun	Jul	Aug	Sep	Oct	
PIBs														
Purchases	2,359.0	2,019.3	2,696.1	2,392.6	2,520.5	2,705.6	5,354.8	3,067.1	3,413.3	2,427.3	2,166.5	2,712.5	2,328.0	
Non Banks	Repo	3.8	14.3	18.3	14.6	11.8	4.8	1.8	4.1	3.1	7.5	4.6	10.1	4.8
	outright	30.6	53.0	49.6	53.6	36.5	33.3	43.3	32.3	16.3	74.7	28.4	51.0	45.5
Banks/PDs	Repo	88.0	230.3	188.7	225.0	162.9	210.7	120.2	204.6	116.9	139.3	123.6	77.8	109.4
	outright	138.0	159.4	343.9	299.9	256.3	283.1	507.5	207.9	170.2	299.1	100.9	174.7	165.1
SBP	Repo	2,098.7	1,562.3	2,095.6	1,799.5	2,053.1	2,173.7	4,682.1	2,618.2	3,106.7	1,906.7	1,909.0	2,398.9	2,003.3
Sales	2,359.0	2,019.3	2,696.1	2,392.6	2,520.5	2,705.6	5,354.8	3,067.1	3,413.3	2,427.3	2,166.5	2,712.5	2,328.0	
Non Banks	Repo	55.3	100.2	72.0	78.0	59.3	92.3	84.8	101.9	33.8	26.2	22.7	15.1	25.1
	outright	25.1	45.2	52.9	22.7	28.5	88.7	98.7	60.5	35.6	30.6	14.7	50.5	34.4
Banks/PDs	Repo	2,135.1	1,706.7	2,230.7	1,961.1	2,168.5	2,297.0	4,719.3	2,725.0	3,192.9	2,027.3	2,014.4	2,471.7	2,092.4
	outright	143.5	167.2	340.5	330.8	264.2	227.7	452.0	179.7	150.9	343.2	114.6	175.2	176.2
SBP	Repo	-	-	-	-	-	-	-	-	-	-	-	-	-
Net Position		-	-	-	-	-	-	-	-	-	-	-	-	-
Treasury Bills														
Purchases	3,901.7	3,596.4	4,760.6	4,493.0	4,574.7	5,391.0	4,743.2	5,886.5	6,829.6	6,704.7	8,074.0	8,904.6	8,399.2	
Non Banks	Repo	58.2	92.2	158.8	104.8	72.1	53.4	24.5	82.8	84.5	50.9	59.4	64.2	68.6
	outright	96.9	174.4	174.9	155.7	254.9	174.0	52.0	188.7	114.4	287.4	278.5	138.6	361.3
Banks/PDs	Repo	1,308.2	1,380.5	1,693.9	1,482.7	1,869.6	1,231.9	1,490.4	1,869.6	1,870.2	1,418.9	1,695.8	1,646.3	1,793.4
	outright	548.5	413.9	557.5	560.7	832.9	692.6	289.2	1,060.0	682.6	1,048.6	1,973.7	1,680.1	2,143.8
SBP	Repo	1,889.9	1,535.4	2,175.6	2,189.1	1,545.2	3,239.2	2,887.1	2,685.5	4,077.9	3,898.8	4,066.7	5,375.4	4,032.1
Sales	3,901.7	3,596.4	4,760.6	4,493.0	4,574.7	5,391.0	4,743.2	5,886.5	6,829.6	6,704.7	8,074.0	8,904.6	8,399.2	
Non Banks	Repo	155.7	91.2	93.7	88.1	103.1	130.6	72.6	153.0	68.0	128.6	117.1	76.5	80.7
	outright	46.4	60.5	189.8	45.9	79.9	145.3	58.2	118.6	153.0	75.6	140.5	150.3	126.8
Banks/PDs	Repo	1,137.4	2,891.2	3,772.9	3,688.5	2,946.1	4,371.0	4,017.4	4,311.8	5,906.0	5,240.0	5,704.8	6,967.8	5,695.0
	outright	2,460.8	527.8	542.6	670.5	1,008.0	721.3	283.0	1,130.1	644.0	1,260.4	2,111.6	1,668.4	2,378.3
SBP	Repo	101.5	25.7	161.7	-	437.7	22.8	312.1	173.0	58.7	-	-	41.5	118.5
Net Position		-	-	-	-	-	-	-	-	-	-	-	-	-

PDs: Primary Dealers

Source: Domestic Markets & Monetary Management Department, SBP

Note: Month-wise volume of repo/outright transactions during the month.