

## 7.1 KSE 100 & All Shares Index

Sector Name	Jun-13	Jun-14	Jun-15	2014	2015			
				Dec	Jan	Feb	Mar	Apr
<b>KSE 100 Index (1991 = 1,000)</b>	<b>21,005.69</b>	<b>29,652.53</b>	<b>34,398.86</b>	<b>32,131.28</b>	<b>34,443.87</b>	<b>33,632.19</b>	<b>30,233.87</b>	<b>33,729.96</b>
<b>KSE All Shares Index (1995 = 1,000)</b>	<b>14,987.53</b>	<b>21,973.16</b>	<b>24,036.72</b>	<b>23,397.91</b>	<b>24,730.26</b>	<b>24,131.61</b>	<b>21,703.09</b>	<b>23,588.90</b>
1. Oil & Gas	17,385.78	19,975.20	14,817.71	16,020.17	16,302.06	16,285.56	14,323.66	15,281.45
2. Chemicals	11,356.80	15,931.96	22,318.58	18,723.85	21,791.85	21,781.96	19,596.28	21,589.82
3. Forestry & Paper	14,860.59	22,169.07	25,692.91	23,466.41	26,258.03	23,489.88	22,340.43	22,278.66
4. Industrial Metals & Mining	8,336.64	9,234.00	11,948.88	10,436.84	12,315.58	11,848.66	10,022.65	10,571.69
5. Construction & Materials	25,522.95	37,888.59	54,253.70	48,348.71	52,294.71	49,870.04	44,831.51	50,705.78
6. General Industrials	11,756.27	20,318.98	26,709.99	26,422.56	29,777.85	27,685.86	23,612.19	24,996.35
7. Electronic & Electrical Equipment	13,295.40	20,639.20	33,546.66	32,627.34	33,873.45	32,968.69	26,698.83	28,313.32
8. Industrial Engineering	10,236.00	11,966.80	19,721.25	16,820.99	17,293.38	17,120.63	14,826.31	16,993.47
9. Industrial Transportation	15,443.41	22,285.74	26,541.29	27,415.89	32,212.22	29,462.28	25,317.15	27,073.25
10. Support Services	37,582.39	51,744.89	110,329.65	52,582.64	57,096.94	52,004.80	53,702.20	66,414.47
11. Automobile & Parts	16,151.05	26,005.69	50,383.75	44,435.47	46,946.31	47,754.42	42,585.17	50,455.78
12. Beverages	33,897.86	85,855.19	85,555.32	104,431.65	104,529.42	104,005.87	91,351.95	86,605.35
13. Food Producers	49,110.72	64,194.28	71,499.07	67,747.06	75,000.28	72,789.76	69,035.17	70,407.25
14. Household Goods	11,110.14	19,913.97	28,764.16	20,278.78	23,261.32	24,096.43	20,831.49	24,389.47
15. Leisure Goods	6,324.49	11,331.33	10,427.57	12,718.49	12,955.48	12,277.68	12,262.65	12,262.65
16. Personal Goods	18,825.48	23,400.43	23,614.06	25,848.03	26,674.21	25,750.08	21,985.21	22,772.31
17. Tobacco	12,810.53	86,761.41	72,406.80	79,726.02	77,085.71	76,814.18	73,174.46	68,893.58
18. Health Care Equipment & Services	23,371.61	76,715.13	132,652.08	115,998.82	145,932.26	144,845.03	127,762.17	128,913.05
19. Pharma & Bio-Tech	17,289.33	28,696.09	36,435.07	37,777.47	38,255.03	36,221.06	29,390.57	32,544.30
20. Media	2,570.34	5,720.40	8,476.56	7,754.88	9,188.14	8,344.71	7,259.10	6,917.10
21. Travel & Leisure	13,331.48	12,477.64	18,263.84	14,494.88	16,026.59	16,429.10	14,976.61	16,693.23
22. Fixed Line Telecommunication	11,073.08	12,124.04	9,845.60	10,937.80	12,274.99	11,037.41	9,945.64	9,857.79
23. Electricity	16,841.63	17,704.00	27,077.76	24,332.33	25,855.45	26,329.24	24,499.71	27,785.58
24. Gas, Water & Multi-utilities	10,182.89	15,881.03	18,553.35	17,824.80	18,460.92	16,480.57	16,106.29	16,007.83
25. Banks	9,736.50	14,406.93	13,457.28	15,081.39	15,451.28	14,715.56	12,535.65	14,074.02
26. Non-Life Insurance	8,052.43	10,128.37	10,706.66	11,967.15	12,550.51	11,777.51	10,120.61	10,665.39
27. Life Insurance	8,693.32	18,368.45	29,674.26	30,205.61	32,027.81	29,640.35	26,925.20	28,995.64
28. Real Estate Investment & Services	6,603.51	6,223.43	10,274.33	5,219.19	6,041.61	5,483.91	4,919.42	4,971.34
29. Real Estate Investment Trust			10,388.34					
30. Financial Services	4,306.13	4,122.66	5,749.46	4,534.41	5,145.82	5,263.83	4,717.50	5,283.85
31. Equity Investment Instruments	13,546.54	11,096.48	9,722.16	9,517.86	10,038.19	10,130.00	8,937.09	9,006.76
32. Software & Computer Services	10,183.05	9,188.00	15,415.03	11,747.57	14,347.99	16,409.24	14,033.55	13,517.39
33. Technology Hardware & Equipment	10,994.06	26,062.82	41,648.57	31,749.28	36,000.94	37,636.49	29,645.05	30,763.57

As per last working day

Source: The Karachi Stock Exchange

## 7.1 KSE 100 & All Shares Index

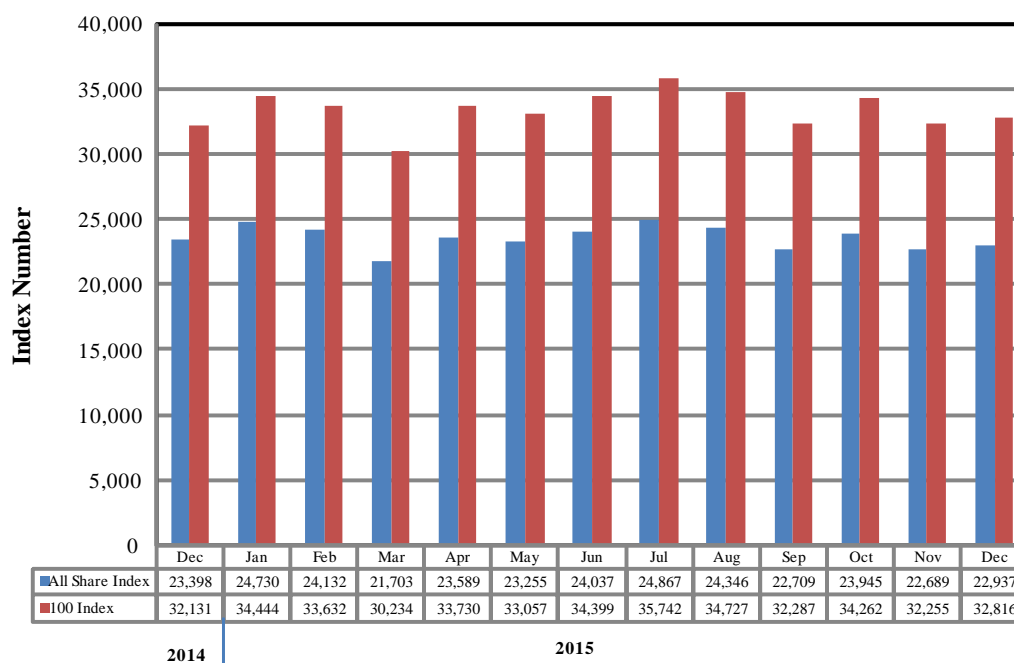
Sector Name	2015							
	May	Jun	Jul	Aug	Sep	Oct	Nov	Dec
<b>KSE 100 Index (1991 = 1,000)</b>	<b>33,056.79</b>	<b>34,398.86</b>	<b>35,741.52</b>	<b>34,726.51</b>	<b>32,287.41</b>	<b>34,261.61</b>	<b>32,255.20</b>	<b>32,816.31</b>
<b>KSE All Shares Index (1995 = 1,000)</b>	<b>23,255.34</b>	<b>24,036.72</b>	<b>24,867.05</b>	<b>24,345.61</b>	<b>22,708.70</b>	<b>23,945.47</b>	<b>22,688.92</b>	<b>22,936.80</b>
1. Oil & Gas	15,036.02	14,817.71	13,878.14	12,427.75	10,824.57	11,875.86	10,813.31	10,945.70
2. Chemicals	20,657.31	22,318.58	23,868.26	24,037.49	21,984.87	22,798.00	20,800.73	21,219.67
3. Forestry & Paper	23,532.39	25,692.91	28,646.69	26,250.61	23,352.49	25,058.00	24,860.86	23,682.13
4. Industrial Metals & Mining	10,789.96	11,948.88	13,076.11	14,292.41	12,295.90	13,658.37	13,231.70	14,808.74
5. Construction & Materials	49,205.70	54,253.70	56,299.21	56,499.87	53,672.78	54,962.68	50,707.85	54,605.93
6. General Industrials	25,040.26	26,709.99	27,932.47	27,179.22	25,344.46	26,526.74	27,589.16	26,322.85
7. Electronic & Electrical Equipment	26,028.50	33,546.66	37,967.35	37,762.37	32,174.35	33,406.55	28,155.15	32,676.80
8. Industrial Engineering	17,644.03	19,721.25	20,532.78	21,180.53	19,933.06	20,818.86	20,289.89	19,738.14
9. Industrial Transportation	26,504.43	26,541.29	27,675.72	28,125.17	29,804.54	173,366.61	258,883.64	263,350.90
10. Support Services	77,537.71	110,329.65	147,274.74	134,454.11	118,289.53	115,861.05	115,080.95	108,122.42
11. Automobile & Parts	50,709.13	50,383.75	51,807.25	50,771.46	46,719.73	52,724.49	49,949.51	50,358.34
12. Beverages	83,171.92	85,555.32	86,681.36	88,831.35	92,846.71	94,974.08	86,422.27	82,976.96
13. Food Producers	69,283.24	71,499.07	76,593.04	76,097.31	72,103.57	69,852.49	65,165.51	62,306.66
14. Household Goods	25,388.40	28,764.16	30,018.40	30,441.14	26,749.45	27,352.28	24,604.41	24,789.13
15. Leisure Goods	10,111.59	10,427.57	10,585.55	13,192.46	11,517.74	11,454.53	12,165.50	11,770.52
16. Personal Goods	21,684.11	23,614.06	23,880.42	23,612.93	22,755.44	23,503.94	22,572.41	21,944.38
17. Tobacco	76,489.19	72,406.80	68,927.11	81,879.15	82,152.56	86,013.52	89,962.86	92,476.29
18. Health Care Equipment & Services	135,807.71	132,652.08	131,962.61	144,823.81	140,608.71	153,825.25	172,366.59	162,820.13
19. Pharma & Bio-Tech	33,648.17	36,435.07	37,362.71	41,513.20	39,854.45	41,906.19	40,391.47	42,116.18
20. Media	7,734.47	8,476.56	9,027.07	9,258.47	8,569.12	8,043.91	7,160.53	6,912.65
21. Travel & Leisure	17,054.29	18,263.84	18,297.37	18,091.47	13,608.25	13,950.36	13,582.13	13,638.27
22. Fixed Line Telecommunication	9,903.39	9,845.60	10,619.80	9,200.21	8,353.51	8,440.29	7,705.80	7,909.39
23. Electricity	27,155.70	27,077.76	28,184.54	28,556.10	27,418.98	27,591.30	27,007.35	26,660.52
24. Gas, Water & Multi-utilities	15,522.12	18,553.35	23,944.44	19,887.28	17,902.32	18,966.66	18,582.98	16,388.06
25. Banks	13,347.10	13,457.28	14,588.96	13,811.12	12,530.40	13,413.87	12,609.77	12,713.72
26. Non-Life Insurance	10,528.72	10,706.66	12,241.53	12,058.13	11,513.50	12,024.59	11,385.88	11,754.84
27. Life Insurance	28,413.83	29,674.26	33,572.58	36,104.92	35,897.87	35,192.23	34,930.89	33,595.28
28. Real Estate Investment & Services	5,067.12	10,274.33	9,649.46	11,361.74	9,927.58	12,085.04	12,295.36	13,579.23
29. Real Estate Investment Trust		10,388.34	10,388.34	9,746.74	9,963.77	9,539.16	9,812.78	10,124.13
30. Financial Services	5,068.53	5,749.46	6,365.26	5,929.34	5,348.20	5,790.60	5,386.91	5,553.69
31. Equity Investment Instruments	8,916.67	9,722.16	9,818.70	9,648.58	9,048.37	8,528.51	8,155.83	8,229.33
32. Software & Computer Services	13,612.42	15,415.03	20,466.60	22,105.22	19,362.41	19,345.52	17,565.82	21,429.15
33. Technology Hardware & Equipment	29,372.40	41,648.57	46,605.44	46,324.99	41,224.50	42,455.86	43,313.80	45,091.58

As per last working day.

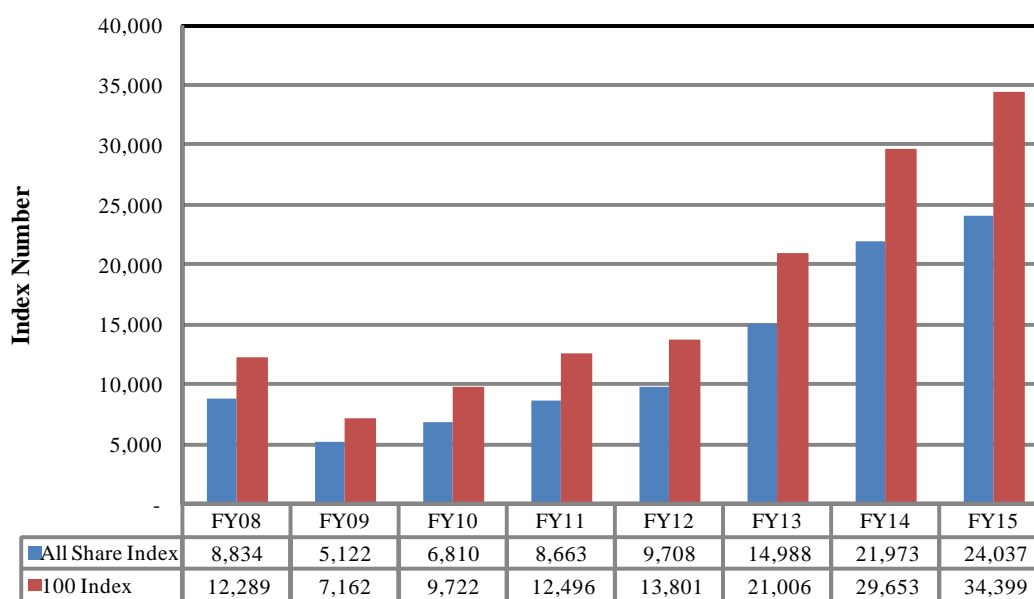
Source: The Karachi Stock Exchange

# Karachi Stock Exchange Index

## Monthly



## Annual



## 7.2 Karachi Stock Exchange Indicators

Month	KSE 100 Index (1991 = 1,000)				
	FY12	FY13	FY14	FY15	FY16
Jul	12,190.37	14,577.00	23,312.78	30,314.07	35,741.52
Aug	1,1070.58	15,391.58	22,160.85	28,567.74	34,726.51
Sep	11,761.97	15,444.82	21,832.68	29,726.39	32,287.41
Oct	11,868.88	15,910.11	22,775.85	30,376.53	34,261.61
Nov	11,532.83	16,573.86	24,302.19	31,197.98	32,255.20
Dec	11,347.66	16,905.33	25,261.14	32,131.28	32,816.31
Jan	11,874.89	17,242.74	26,784.34	34,443.87	
Feb	12,877.88	18,173.67	25,783.28	33,632.19	
Mar	13,761.76	18,043.31	27,159.91	30,233.87	
Apr	13,990.38	18,982.42	28,912.98	33,729.96	
May	13,786.62	21,823.05	29,737.69	33,056.79	
Jun	13,801.41	21,005.69	29,652.53	34,398.86	
Month	KSE All Share Index (1995 = 1,000)				
	FY12	FY13	FY14	FY15	FY16
Jul	8,449.87	10,264.58	16,614.91	22,264.59	24,867.05
Aug	7,693.59	10,844.53	16,023.32	21,014.45	24,345.61
Sep	8,159.12	10,897.78	15,836.86	21,778.18	22,708.70
Oct	8,215.84	11,156.81	16,594.63	22,269.40	23,945.47
Nov	7,984.53	11,691.52	18,010.72	22,706.46	22,688.92
Dec	7,856.82	11,964.24	18,664.04	23,397.91	22,936.80
Jan	8,225.97	12,207.26	20,244.31	24,730.26	
Feb	8,946.64	12,768.64	19,282.40	24,131.61	
Mar	9,649.95	12,802.46	20,396.67	21,703.09	
Apr	9,812.71	13,497.01	21,597.74	23,588.90	
May	9,714.33	15,355.44	21,960.78	23,255.34	
Jun	9,708.31	14,987.53	21,973.16	24,036.72	
Month	Karachi Meezan Index 30 (KMI-30) Index (Base: June 2008)				
	FY12	FY13	FY14	FY15	FY16
Jul	21,203.61	25,121.52	40,774.47	48,982.88	58,553.60
Aug	20,061.90	27,236.72	37,950.47	46,494.76	57,835.02
Sep	21,313.30	27,458.04	36,825.25	48,379.38	54,084.96
Oct	22,166.78	27,821.39	38,688.00	48,699.15	57,362.34
Nov	21,166.76	28,516.64	40,669.34	49,786.79	53,483.00
Dec	20,137.71	29,125.55	42,431.05	50,735.12	55,604.30
Jan	21,622.44	29,695.20	44,186.56	53,901.99	
Feb	22,885.39	31,362.24	42,886.67	53,624.30	
Mar	23,571.97	31,598.72	44,607.78	49,363.34	
Apr	24,225.87	32,963.96	46,095.26	55,234.87	
May	23,976.43	37,642.68	46,986.24	54,667.97	
Jun	23,776.48	36,713.89	47,686.55	57,271.34	

As per last working day.

## 7.3 Market Capitalization of KSE all Shares

(Million Rupees)

Sector Name		Jun-13	Jun-14	Jun-15	2014	2015			
					Dec	Jan	Feb	Mar	Apr
1	Oil & Gas	1,639,745	1,964,955	1,472,912	1,575,900	1,603,628	1,602,006	1,409,014	1,503,231
2	Chemicals	397,449	557,606	785,646	658,173	766,018	766,757	689,818	759,994
3	Forestry & Paper	5,896	11,600	14,272	13,035	14,586	13,048	12,410	12,375
4	Industrial Metals & Mining	21,437	24,079	31,159	27,216	32,115	30,897	26,136	27,568
5	Construction & Materials	255,102	385,685	567,292	502,961	544,011	520,300	467,733	529,814
6	General Industrials	50,374	85,566	115,058	111,269	125,398	118,635	101,180	107,111
7	Electronic & Electrical Equipment	1,950	3,027	4,921	4,786	4,969	4,836	3,916	4,153
8	Industrial Engineering	34,306	46,240	80,732	64,996	66,821	66,154	57,288	69,566
9	Industrial Transportation	28,845	42,239	70,354	72,672	85,386	78,097	67,109	71,764
10	Support Services	3,927	5,407	13,607	6,485	7,042	6,414	6,623	8,191
11	Automobile & Parts	76,424	124,851	242,098	213,516	225,581	229,464	204,626	242,445
12	Beverages	10,144	28,514	29,000	35,398	35,431	35,254	30,964	29,356
13	Food Producers	743,847	706,761	808,875	766,276	848,215	823,215	781,000	796,523
14	Household Goods	17,585	38,875	63,185	44,545	51,097	52,931	45,760	53,575
15	Leisure Goods	294	527	485	592	603	571	570	570
16	Personal Goods	270,658	353,157	362,769	393,409	406,340	392,262	334,911	346,901
17	Tobacco	53,872	364,856	304,491	335,270	324,167	323,025	307,719	289,717
18	Health Care Equipment & Services	2,226	7,307	12,634	11,048	13,899	13,796	12,169	12,278
19	Pharma & Bio Tech.	84,748	147,640	193,510	200,006	202,534	191,766	155,603	172,846
20	Media	2,707	10,557	15,643	14,311	16,956	15,400	13,396	12,765
21	Travel & Leisure	43,435	40,653	59,505	47,226	52,216	53,527	48,795	54,388
22	Fixed Line Telecommunication	91,248	99,908	81,132	90,133	101,152	90,954	81,957	81,233
23	Electricity	186,079	195,607	317,904	285,672	303,554	309,116	287,637	326,214
24	Gas, Water & Multi-utilities	29,918	46,659	54,511	52,370	54,239	48,421	47,321	47,032
25	Banks	952,405	1,509,218	1,421,098	1,588,275	1,627,708	1,550,204	1,322,944	1,485,296
26	Non-Life Insurance	71,305	109,717	117,541	129,538	135,853	127,485	109,550	116,473
27	Life Insurance	15,308	34,808	56,233	57,240	60,693	56,169	51,023	54,947
28	Real Estate Investment & Services	1,367	1,288	2,127	1,080	1,251	1,135	1,018	1,029
29	Real Estate Investment Trust			24,483					
30	Financial Services	24,301	39,200	54,140	42,688	48,444	49,555	44,422	49,755
31	Equity Investment Instruments	33,495	29,217	27,568	25,802	28,415	28,675	25,299	25,505
32	Software & Computer Services	2,553	2,600	9,168	3,324	4,060	9,211	7,880	8,039
33	Technology Hardware & Equipment	1,788	4,368	6,979	5,320	6,033	6,307	4,968	5,155
<b>TOTAL</b>		<b>5,154,738</b>	<b>7,022,692</b>	<b>7,421,032</b>	<b>7,380,532</b>	<b>7,798,415</b>	<b>7,615,587</b>	<b>6,760,759</b>	<b>7,305,809</b>

As per last working day

Source: The Karachi Stock Exchange

## 7.3 Market Capitalization of KSE all Shares

(Million Rupees)

Sector Name		2015							
		May	Jun	Jul	Aug	Sep	Oct	Nov	Dec
1	Oil & Gas	1,494,613	1,472,912	1,379,517	1,235,345	1,075,986	1,180,486	1,074,867	1,088,026
2	Chemicals	727,168	785,646	840,198	846,155	773,900	802,584	732,578	747,332
3	Forestry & Paper	13,072	14,272	15,913	14,581	12,972	13,919	13,810	13,155
4	Industrial Metals & Mining	28,137	31,159	34,098	37,270	32,064	36,061	34,934	53,741
5	Construction & Materials	514,140	567,292	589,383	591,483	561,887	575,391	530,848	571,657
6	General Industrials	107,865	115,058	120,324	117,079	109,175	114,268	118,845	114,021
7	Electronic & Electrical Equipment	3,818	4,921	5,569	5,539	4,719	4,900	4,130	4,793
8	Industrial Engineering	72,229	80,732	84,055	86,706	81,600	86,451	84,255	81,963
9	Industrial Transportation	70,256	70,354	80,928	82,243	68,146	77,909	67,897	77,855
10	Support Services	9,563	13,607	18,163	16,582	16,884	16,537	20,114	18,898
11	Automobile & Parts	243,662	242,098	248,939	243,962	224,493	253,346	240,012	241,976
12	Beverages	28,192	29,000	29,381	30,110	31,471	32,192	29,293	28,126
13	Food Producers	783,807	808,875	866,503	869,578	823,941	798,218	746,856	714,091
14	Household Goods	55,769	63,185	65,940	66,869	58,759	60,282	54,226	54,633
15	Leisure Goods	470	485	492	614	536	533	566	547
16	Personal Goods	332,865	362,769	374,438	370,243	356,798	369,552	355,147	345,869
17	Tobacco	321,658	304,491	289,857	344,324	345,474	361,711	378,319	388,888
18	Health Care Equipment & Services	12,935	12,634	12,569	13,794	13,392	14,651	16,417	15,508
19	Pharma & Bio Tech.	178,709	193,510	198,437	220,481	211,671	229,656	223,249	232,782
20	Media	14,274	15,643	16,659	17,086	15,814	14,845	13,215	12,757
21	Travel & Leisure	55,564	59,505	59,615	58,944	44,337	45,452	44,252	44,435
22	Fixed Line Telecommunication	81,609	81,132	87,512	75,814	68,837	69,552	63,500	65,177
23	Electricity	318,819	317,904	330,898	335,260	321,910	323,933	317,077	313,006
24	Gas, Water & Multi-utilities	45,605	54,511	70,350	58,430	52,598	55,725	54,598	48,149
25	Banks	1,408,578	1,421,098	1,549,718	1,467,091	1,331,047	1,424,895	1,339,479	1,350,522
26	Non-Life Insurance	115,588	117,541	134,392	132,377	126,399	132,010	125,710	129,784
27	Life Insurance	53,844	56,233	63,620	68,419	68,026	66,689	66,194	63,663
28	Real Estate Investment & Services	1,049	2,127	1,997	2,352	2,055	2,502	2,545	2,811
29	Real Estate Investment Trust		24,483	24,483	22,971	23,482	22,482	23,126	23,860
30	Financial Services	47,728	54,140	59,938	55,834	50,361	54,655	50,845	55,448
31	Equity Investment Instruments	25,250	27,568	27,842	27,359	25,658	24,206	23,339	23,550
32	Software & Computer Services	8,095	9,168	12,172	13,183	11,547	11,537	10,475	12,779
33	Technology Hardware & Equipment	4,922	6,979	7,810	7,763	6,908	7,114	7,258	7,556
<b>TOTAL</b>		<b>7,179,853</b>	<b>7,421,032</b>	<b>7,701,710</b>	<b>7,535,841</b>	<b>6,952,847</b>	<b>7,284,244</b>	<b>6,867,976</b>	<b>6,947,358</b>

As per last working day

Source: The Karachi Stock Exchange

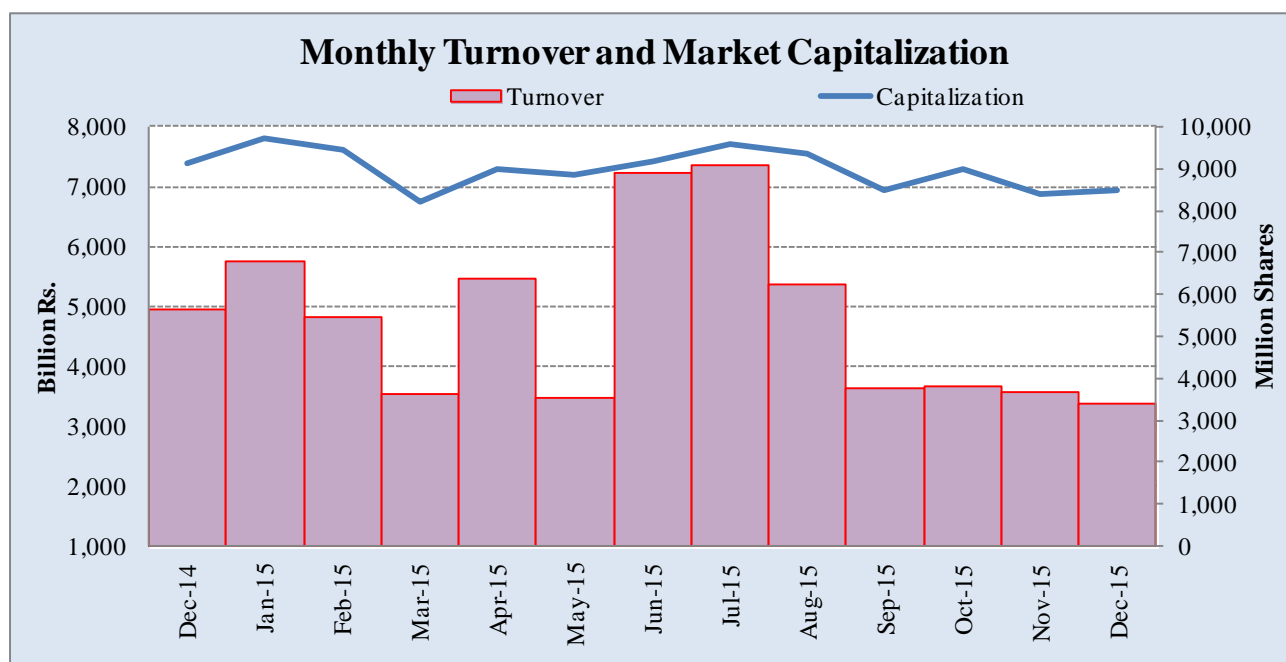
## 7.4 Turnover of Shares at Karachi Stock Exchange

(Million Nos.)

Month	Monthly Turnover at Ready Counter of the KSE				
	FY12*	FY13	FY14	FY15	FY16
Jul	1,677.19	2,275.63	6,601.48	2,297.59	9,091.73
Aug	1,240.82	3,476.54	3,804.03	2,691.58	6,247.91
Sep	1,685.82	3,240.06	4,721.86	3,470.43	3,746.73
Oct	2,314.53	3,014.51	2,341.31	3,691.08	3,784.60
Nov	1,043.66	4,857.91	2,869.33	4,701.90	3,670.15
Dec	1,232.17	3,600.49	4,758.79	5,621.23	3,395.26
Jan	1,986.80	3,858.08	7,163.83	6,809.66	
Feb	4,207.41	5,683.67	4,686.10	5,460.27	
Mar	8,244.90	4,643.78	4,801.15	3,638.57	
Apr	7,113.63	4,142.79	6,746.38	6,370.97	
May	4,657.19	7,827.77	3,693.95	3,550.78	
Jun	2,607.28	7,697.54	4,392.36	8,900.05	
<b>Total</b>	<b>38,011.40</b>	<b>54,318.77</b>	<b>56,580.57</b>	<b>57,204.10</b>	<b>29,936.36</b>

\*Revised-Turnover includes off-market transactions.

Source : The Karachi Stock Exchange



## 7.5 Financial Statement Analysis of Non-Financial Sector

### Overall\*

(Million Rupees)

ITEMS	2010	2011	2012	2013	2014
<b>A.Non-Current Assets (A1+A3+A5+A6+A7)</b>	<b>2,401,658.9</b>	<b>2,561,199.1</b>	<b>2,694,994.6</b>	<b>3,111,780.9</b>	<b>3,429,769.7</b>
1.Capital work in progress	393,354.0	238,079.7	195,227.3	183,142.6	215,437.9
2.Operating fixed assets at cost	2,711,252.1	3,123,687.8	3,313,859.9	3,525,738.9	3,837,744.0
3.Operating fixed assets after deducting accumulated depreciation	1,654,398.1	1,939,945.9	2,053,625.3	2,189,541.3	2,368,154.6
4.Depreciation for the year	128,404.7	158,989.7	167,363.1	170,334.3	187,759.1
5.Intangible assets	101,391.0	98,872.6	106,237.9	128,929.1	165,072.4
6.Long term investments	178,808.3	205,387.3	236,791.0	509,270.5	558,922.5
7.Other non-current assets	73,707.4	78,913.7	103,113.0	100,897.3	122,182.2
<b>B.Current Assets (B1+B2+B3+B4+B5)</b>	<b>1,750,058.3</b>	<b>2,110,251.7</b>	<b>2,628,277.6</b>	<b>2,299,852.3</b>	<b>2,702,540.7</b>
1.Cash & bank balance	180,832.2	162,448.2	157,761.7	216,287.6	227,769.4
2.Inventories	390,336.1	552,001.6	552,224.6	596,184.4	590,270.9
3.Trade Debt	735,610.2	814,571.1	1,216,874.3	765,019.4	1,059,257.6
4.Short term investments	97,156.2	119,009.0	132,312.4	167,127.6	211,124.9
5.Other current assets	346,123.7	462,221.9	569,104.5	555,233.3	614,117.9
<b>C.Current Liabilities (C1+C2)</b>	<b>1,695,720.5</b>	<b>1,974,394.7</b>	<b>2,431,040.1</b>	<b>2,239,479.0</b>	<b>2,601,232.8</b>
1.Short term Secured loans	504,843.2	633,573.5	724,000.6	653,307.1	810,129.9
2.Other current liabilities	1,190,877.3	1,340,821.2	1,707,039.5	1,586,172.0	1,791,102.9
<b>D.Non-Current Liabilities (D1+D2+D3+D4+D5)</b>	<b>1,035,668.2</b>	<b>1,071,758.3</b>	<b>1,102,094.6</b>	<b>1,119,116.2</b>	<b>1,179,715.0</b>
1.Long term secured loans	489,220.8	534,143.1	563,532.1	547,753.5	524,002.6
2.Long term unsecured loans	100,020.3	76,618.5	68,238.8	62,957.4	52,003.5
3.Debentures/TFCs	37,640.2	42,577.4	31,640.2	21,912.6	17,798.8
4.Employees benefit obligations	45,156.4	52,238.4	80,034.0	86,387.1	93,276.5
5.Other non-current liabilities	363,630.6	366,180.9	358,649.4	400,105.6	492,633.7
<b>E.Shareholders Equity (E1+E2+E3)</b>	<b>1,420,328.5</b>	<b>1,625,297.8</b>	<b>1,790,137.4</b>	<b>2,053,037.9</b>	<b>2,351,362.6</b>
1.Issued, Subscribed & Paid up capital	535,555.0	589,101.2	619,783.6	634,232.1	669,228.3
i).Ordinary Shares	518,806.3	571,993.1	606,767.6	625,303.6	661,577.4
ii).Preference shares	16,748.7	17,108.2	13,016.0	8,928.4	7,650.9
2.Reserves	676,969.1	798,630.9	887,251.1	1,124,784.8	1,355,614.3
i).Capital Reserve	128,132.2	166,096.5	170,529.0	233,382.8	249,063.3
ii).Revenue Reserve	547,710.0	632,534.4	716,722.1	891,402.0	1,106,551.1
3.Surplus on revaluation of fixed assets	207,804.5	237,565.7	283,102.8	294,021.1	326,519.9
<b>F.Operation:</b>					
1.Sales	4,195,296.5	5,044,542.8	5,678,343.1	6,183,225.5	6,768,207.1
i).Local sales (Net)	3,757,466.1	4,451,052.9	5,146,961.3	5,527,093.7	6,055,075.1
ii).Export Sales (Net)	437,830.4	593,490.0	531,381.8	656,131.8	713,132.0
2.Cost of sales	3,568,974.0	4,296,499.1	4,762,006.0	5,238,208.5	5,804,233.8
i).Cost of material	1,917,329.5	2,288,498.8	2,539,759.0	2,830,855.0	3,057,926.3
ii).Other input cost	1,649,963.2	2,008,000.3	2,222,247.0	2,407,353.5	2,746,307.5
3.Gross Profit	626,322.5	748,043.7	916,337.1	945,017.0	963,973.3
4.General, administrative and other expenses	262,917.5	308,725.8	334,823.0	383,414.8	392,209.8
i).Selling & distribution expenses	119,465.0	134,116.3	148,653.3	166,597.0	167,934.1
ii).Administrative and other expenses	143,452.5	174,609.6	186,169.7	216,817.8	224,275.6
5.Financial expenses	140,063.3	174,205.3	201,895.2	185,306.4	181,548.0
of which: Interest expenses	102,436.1	141,431.5	149,879.1	141,147.0	144,507.5
6.Net profit before tax	320,803.0	378,432.6	510,596.6	520,202.9	556,819.4
7.Tax provision (current year)	98,378.8	127,435.7	126,965.6	137,617.7	159,146.0
8.Total amount of dividend	123,384.9	146,811.7	158,758.1	202,755.8	212,971.2
9.Total value of bonus shares issued	15,957.0	9,176.4	5,636.4	8,185.1	2,992.1
10.Cash flows from operations	330,953.5	270,264.7	279,939.5	745,344.6	371,439.0
<b>G.Miscellaneous</b>					
1.Total capital employed (E+D)	2,455,996.7	2,697,056.2	2,892,232.0	3,172,154.1	3,531,077.6
2.Total fixed liabilities (D1+D3)	526,861.0	576,720.5	595,172.3	569,666.1	541,801.4
3.Retention in business (F7-F8-F9)	99,039.2	104,185.3	224,872.9	179,829.5	184,702.2
4.Contractual Liabilities (G2+C1)	1,031,704.2	1,210,294.0	1,319,172.9	1,222,973.2	1,351,931.3
5.Salaries, wages and employee benefits	186,722.1	240,843.7	228,827.2	294,728.2	316,108.2
<b>H.Key Performance Indicators</b>					
1.Acid test or quick ratio[(B1+B3+B4) to C]	0.6	0.6	0.6	0.5	0.6
2.Financial expenses as % of sales (F6 as % of F1)	3.3	3.5	3.6	3.0	2.7
3.Trade Debt as % of sales (B3 as % of F1)	17.5	16.2	21.4	12.4	15.7
4.Assets turnover ratio [F1 to (A+B)]	1.0	1.1	1.1	1.1	1.1
5.Current ratio (B to C)	1.0	1.1	1.1	1.0	1.0
6.Cost of goods sold to sales (F2 as % of F1)	85.1	85.2	83.9	84.7	85.8
7.Debt equity ratio [(C+D) to E]	1.9	1.9	2.0	1.6	1.6
8.Return on assets [F7 as % of avg.(A+B)]	8.3	8.6	10.2	9.7	9.7
9.Return of equity (F7 as % of avg. E)	24.6	24.9	29.9	27.1	25.3
10.Return on capital employed ( F7 as % of avg. G1)	13.8	14.7	18.3	17.2	16.6
11.Dividend cover ratio [(F7-F8) to F9]	1.8	1.7	2.4	1.9	1.9
12.Inventory Turnover Ratio (F1 to B2)	10.8	9.1	10.3	10.4	11.5
13.Interest cover ratio [(F7+ F6(i)) to F6(i)]	4.1	3.7	4.4	4.7	4.9
14.Net profit margin (F7 as % of F1)	7.7	7.5	9.0	8.4	8.2
15.Earning per share after tax (Rs./share) [(F7-F8)/No. of Ord. shares]	4.3	4.4	6.3	6.1	6.1
16.Break-up value shares (Rs./share) (E/No. of Ord. shares)	27.2	28.2	29.3	32.6	36.3

\* Companies listed at KSE



## 7.6 Financial Statement Analysis of Non-Financial Sector

### Private Overall\*

(Million Rupees)

ITEMS	2010	2011	2012	2013	2014
<b>A.Non-Current Assets (A1+A3+A5+A6+A7)</b>	<b>1,927,153.0</b>	<b>2,032,690.2</b>	<b>2,122,466.0</b>	<b>2,277,687.7</b>	<b>2,566,095.3</b>
1.Capital work in progress	345,901.9	197,602.0	158,709.2	115,190.2	133,908.3
2.Operating fixed assets at cost	2,167,251.0	2,508,159.1	2,689,324.0	2,900,552.6	3,182,329.0
3.Operating fixed assets after deducting accumulated depreciation	1,323,674.1	1,563,356.1	1,642,565.5	1,765,360.0	1,938,369.4
4.Depreciation for the year	99,122.6	125,827.0	129,756.7	137,557.2	153,850.8
5.Intangible assets	39,132.9	36,197.8	37,663.2	46,895.3	83,295.1
6.Long term investments	170,511.0	181,279.3	207,407.5	278,390.8	325,165.6
7.Other non-current assets	47,933.0	54,254.9	76,120.6	71,851.3	85,357.0
<b>B.Current Assets (B1+B2+B3+B4+B5)</b>	<b>1,223,081.8</b>	<b>1,490,337.0</b>	<b>1,761,896.4</b>	<b>1,627,147.6</b>	<b>1,874,051.7</b>
1.Cash & bank balance	159,153.9	136,172.3	140,355.3	187,278.3	189,815.8
2.Inventories	325,241.9	449,723.5	456,366.8	487,510.7	501,058.5
3.Trade Debt	407,627.1	483,579.3	654,247.7	435,589.0	573,792.8
4.Short term investments	67,476.6	96,760.7	96,444.6	134,569.8	180,375.7
5.Other current assets	263,582.3	324,101.1	414,482.0	382,199.9	429,008.9
<b>C.Current Liabilities (C1+C2)</b>	<b>1,247,133.1</b>	<b>1,475,594.8</b>	<b>1,722,243.6</b>	<b>1,530,915.3</b>	<b>1,832,419.9</b>
1.Short term Secured loans	436,970.2	562,304.5	586,381.9	569,318.6	648,071.1
2.Other current liabilities	810,163.0	913,290.3	1,135,861.8	961,596.8	1,184,348.8
<b>D.Non-Current Liabilities (D1+D2+D3+D4+D5)</b>	<b>773,617.8</b>	<b>778,187.5</b>	<b>808,233.3</b>	<b>819,688.5</b>	<b>857,389.5</b>
1.Long term secured loans	455,017.4	466,183.0	476,526.2	472,105.3	433,139.4
2.Long term unsecured loans	90,769.0	67,294.4	59,152.5	53,871.1	42,917.2
3.Debentures/TFCs	19,395.5	29,851.9	25,580.5	21,912.6	17,798.8
4.Employees benefit obligations	29,956.3	32,695.4	49,766.5	51,999.4	53,054.9
5.Other non-current liabilities	178,479.6	182,162.9	197,207.6	219,800.1	310,479.2
<b>E.Shareholders Equity (E1+E2+E3)</b>	<b>1,129,483.8</b>	<b>1,269,244.9</b>	<b>1,353,885.4</b>	<b>1,554,231.5</b>	<b>1,750,337.6</b>
1.Issued, Subscribed & Paid up capital	440,937.0	487,809.0	516,575.2	526,990.3	558,371.1
i).Ordinary Shares	424,195.8	470,708.3	503,566.7	518,061.9	550,720.2
ii).Preference shares	16,741.2	17,100.7	13,008.5	8,928.4	7,650.9
2.Reserves	507,393.6	582,538.2	604,509.1	788,676.8	917,172.9
i).Capital Reserve	119,699.3	154,569.5	162,020.2	223,654.8	240,666.1
ii).Revenue Reserve	386,567.5	427,968.7	442,488.9	565,022.0	676,506.8
3.Surplus on revaluation of fixed assets	181,153.2	198,897.8	232,801.1	238,564.3	274,793.5
<b>F.Operation:</b>					
1.Sales	2,856,365.7	3,547,703.6	3,874,672.0	4,283,052.0	4,720,616.5
i).Local sales (Net)	2,418,535.4	2,954,213.6	3,343,290.2	3,626,920.2	4,007,484.5
ii).Export Sales (Net)	437,830.4	593,490.0	531,381.8	656,131.8	713,132.0
2.Cost of sales	2,424,105.6	2,998,670.2	3,326,266.0	3,599,097.4	4,058,377.3
i).Cost of material	1,721,363.0	2,184,086.0	2,419,587.3	2,656,450.5	2,889,806.8
ii).Other input cost	701,061.2	814,584.1	906,678.7	942,646.9	1,168,570.5
3.Gross Profit	432,260.2	549,033.4	548,406.0	683,954.6	662,239.2
4.General, administrative and other expenses	208,403.4	245,258.7	274,527.5	299,044.1	320,756.1
i).Selling & distribution expenses	106,246.1	117,316.3	127,133.3	145,567.9	146,323.4
ii).Administrative and other expenses	102,157.2	127,942.4	147,394.3	153,476.2	174,432.6
5.Financial expenses	109,408.7	140,166.7	164,082.9	149,841.7	142,784.4
of which: Interest expenses	88,716.8	123,958.1	126,849.1	114,238.0	115,017.0
6.Net profit before tax	174,241.3	238,238.1	180,994.1	323,215.6	294,317.7
7.Tax provision (current year)	57,814.5	78,399.6	63,357.5	65,817.8	71,079.6
8.Total amount of dividend	86,523.7	104,052.5	107,686.0	144,843.4	142,404.2
9.Total value of bonus shares issued	12,287.4	7,287.3	1,406.0	3,746.1	2,045.1
10.Cash flows from operations	203,559.9	163,689.1	203,064.2	397,363.1	320,400.8
<b>G.Miscellaneous</b>					
1.Total capital employed (E+D)	1,903,101.6	2,047,432.4	2,162,118.7	2,373,919.9	2,607,727.1
2.Total fixed liabilities (D1+D3)	474,412.9	496,034.9	502,106.7	494,017.9	450,938.2
3.Retention in business (F7-F8-F9)	29,903.2	55,786.0	9,950.6	112,554.4	80,833.9
4.Contractual Liabilities (G2+C1)	911,383.1	1,058,339.4	1,088,488.6	1,063,336.5	1,099,009.3
5.Salaries, wages and employee benefits	143,173.7	180,401.3	183,603.6	221,827.1	237,183.5
<b>H.Key Performance Indicators</b>					
1.Acid test or quick ratio[(B1+B3+B4) to C]	0.5	0.5	0.5	0.5	0.5
2.Financial expenses as % of sales (F6 as % of F1)	3.8	4.0	4.2	3.5	3.0
3.Trade Debt as % of sales (B3 as % of F1)	14.3	13.6	16.9	10.2	12.2
4.Assets turnover ratio [F1 to (A+B)]	0.9	1.0	1.0	1.1	1.1
5.Current ratio (B to C)	1.0	1.0	1.0	1.1	1.0
6.Cost of goods sold to sales (F2 as % of F1)	84.9	84.5	85.9	84.0	86.0
7.Debt equity ratio [(C+D) to E]	1.8	1.8	1.9	1.5	1.5
8.Return on assets [F7 as % of avg.(A+B)]	6.0	7.1	4.9	8.3	7.1
9.Return of equity (F7 as % of avg. E)	16.8	19.9	13.8	22.3	17.8
10.Return on capital employed ( F7 as % of avg. G1)	9.8	12.1	8.6	14.3	11.8
11.Dividend cover ratio [(F7-F8) to F9]	1.4	1.5	1.1	1.8	1.6
12.Inventory Turnover Ratio (F1 to B2)	8.8	7.9	8.5	8.8	9.4
13.Interest cover ratio [(F7+ F6(i)) to F6(i)]	3.0	2.9	2.4	3.8	3.6
14.Net profit margin (F7 as % of F1)	6.1	6.7	4.7	7.6	6.2
15.Earning per share after tax (Rs./share) [(F7-F8)/No. of Ord. shares]	2.7	3.4	2.3	4.9	4.0
16.Break-up value shares (Rs./share) (E/No. of Ord. shares)	26.4	26.7	26.7	29.8	31.6

\* Companies listed at KSE

## 7.7 Financial Statement Analysis of Non-Financial Sector

### Public Overall\*

(Million Rupees)

ITEMS	2010	2011	2012	2013	2014
<b>A.Non-Current Assets (A1+A3+A5+A6+A7)</b>	<b>474,506.0</b>	<b>528,509.0</b>	<b>572,528.6</b>	<b>834,093.2</b>	<b>863,674.4</b>
1.Capital work in progress	47,452.1	40,477.6	36,518.1	67,952.4	81,529.6
2.Operating fixed assets at cost	544,001.0	615,528.7	624,535.8	625,186.4	655,415.0
3.Operating fixed assets after deducting accumulated depreciation	330,724.0	376,589.8	411,059.9	424,181.3	429,785.3
4.Depreciation for the year	29,282.1	33,162.7	37,606.4	32,777.1	33,908.4
5.Intangible assets	62,258.1	62,674.8	68,574.7	82,033.8	81,777.3
6.Long term investments	8,297.3	24,108.0	29,383.5	230,879.7	233,757.0
7.Other non-current assets	25,774.4	24,658.8	26,992.5	29,046.0	36,825.2
<b>B.Current Assets (B1+B2+B3+B4+B5)</b>	<b>526,976.5</b>	<b>619,914.7</b>	<b>866,381.2</b>	<b>672,704.7</b>	<b>828,489.1</b>
1.Cash & bank balance	21,678.3	26,275.9	17,406.4	29,009.4	37,953.6
2.Inventories	65,094.2	102,278.1	95,857.8	108,673.7	89,212.4
3.Trade Debt	327,983.1	330,991.8	562,626.6	329,430.4	485,464.9
4.Short term investments	29,679.6	22,248.3	35,867.8	32,557.8	30,749.2
5.Other current assets	82,541.4	138,120.7	154,622.5	173,033.4	185,108.9
<b>C.Current Liabilities (C1+C2)</b>	<b>448,587.4</b>	<b>498,799.9</b>	<b>708,796.5</b>	<b>708,563.7</b>	<b>768,812.9</b>
1.Short term Secured loans	67,873.1	71,269.0	137,618.8	83,988.5	162,058.8
2.Other current liabilities	380,714.3	427,531.0	571,177.7	624,575.2	606,754.1
<b>D.Non-Current Liabilities (D1+D2+D3+D4+D5)</b>	<b>262,050.4</b>	<b>293,570.8</b>	<b>293,861.3</b>	<b>299,427.7</b>	<b>322,325.5</b>
1.Long term secured loans	34,203.4	67,960.1	87,005.9	75,648.2	90,863.2
2.Long term unsecured loans	9,251.2	9,324.2	9,086.3	9,086.3	9,086.3
3.Debentures/TFCs	18,244.7	12,725.5	6,059.7	-	-
4.Employees benefit obligations	15,200.1	19,543.0	30,267.5	34,387.7	40,221.6
5.Other non-current liabilities	185,151.0	184,018.0	161,441.8	180,305.5	182,154.4
<b>E.Shareholders Equity (E1+E2+E3)</b>	<b>290,844.7</b>	<b>356,052.9</b>	<b>436,252.0</b>	<b>498,806.5</b>	<b>601,025.1</b>
1.Issued, Subscribed & Paid up capital	94,618.0	101,292.3	103,208.4	107,241.7	110,857.2
i).Ordinary Shares	94,610.5	101,284.8	103,200.9	107,241.7	110,857.2
ii).Preference shares	7.5	7.5	7.5	-	-
2.Reserves	169,575.5	216,092.7	282,742.0	336,108.0	438,441.4
i).Capital Reserve	8,432.9	11,527.0	8,508.8	9,728.0	8,397.2
ii).Revenue Reserve	161,142.6	204,565.7	274,233.2	326,380.0	430,044.3
3.Surplus on revaluation of fixed assets	26,651.3	38,667.9	50,301.7	55,456.8	51,726.4
<b>F.Operation:</b>					
1.Sales	1,338,930.8	1,496,839.2	1,803,671.1	1,900,173.5	2,047,590.6
i).Local sales (Net)	1,338,930.8	1,496,839.2	1,803,671.1	1,900,173.5	2,047,590.6
ii).Export Sales (Net)	-	-	-	-	-
2.Cost of sales	1,144,868.4	1,297,829.0	1,435,740.0	1,639,111.1	1,745,856.6
i).Cost of material	195,966.4	104,412.8	120,171.7	174,404.6	168,119.5
ii).Other input cost	948,902.0	1,193,416.2	1,315,568.3	1,464,706.6	1,577,737.1
3.Gross Profit	194,062.4	199,010.3	367,931.1	261,062.4	301,734.0
4.General, administrative and other expenses	54,514.1	63,467.1	60,295.5	84,370.7	71,453.7
i).Selling & distribution expenses	13,218.9	16,799.9	21,520.0	21,029.0	21,610.7
ii).Administrative and other expenses	41,295.2	46,667.2	38,775.4	63,341.6	49,843.0
5.Financial expenses	30,654.6	34,038.7	37,812.3	35,464.7	38,763.6
of which: Interest expenses	13,719.3	17,473.4	23,029.9	26,909.0	29,490.5
6.Net profit before tax	146,561.6	140,194.5	329,602.6	196,987.3	262,501.8
7.Tax provision (current year)	40,564.3	49,036.1	63,608.2	71,799.8	88,066.5
8.Total amount of dividend	36,861.3	42,759.2	51,072.1	57,912.4	70,567.0
9.Total value of bonus shares issued	3,669.6	1,889.0	4,230.3	4,439.1	947.0
10.Cash flows from operations	127,393.5	106,575.7	76,875.3	347,981.5	51,038.2
<b>G.Miscellaneous</b>					
1.Total capital employed (E+D)	552,895.1	649,623.8	730,113.3	798,234.2	923,350.6
2.Total fixed liabilities (D1+D3)	52,448.1	80,685.7	93,065.6	75,648.2	90,863.2
3.Retention in business (F7-F8-F9)	69,136.1	48,399.3	214,922.3	67,275.1	103,868.3
4.Contractual Liabilities (G2+C1)	120,321.2	151,954.6	230,684.4	159,636.7	252,922.0
5.Salaries, wages and employee benefits	43,548.4	60,442.3	45,223.6	72,901.1	78,924.6
<b>H.Key Performance Indicators</b>					
1.Acid test or quick ratio[(B1+B3+B4) to C]	0.9	0.8	0.9	0.6	0.7
2.Financial expenses as % of sales (F6 as % of F1)	2.3	2.3	2.1	1.9	1.9
3.Trade Debt as % of sales (B3 as % of F1)	24.5	22.1	31.2	17.3	23.7
4.Assets turnover ratio [F1 to (A+B)]	1.3	1.3	1.3	1.3	1.2
5.Current ratio (B to C)	1.2	1.2	1.2	1.0	1.1
6.Cost of goods sold to sales (F2 as % of F1)	85.5	86.7	79.6	86.3	85.3
7.Debt equity ratio [(C+D) to E]	2.4	2.2	2.3	2.0	1.8
8.Return on assets [F7 as % of avg.(A+B)]	15.6	13.0	25.5	13.4	16.4
9.Return of equity (F7 as % of avg. E)	54.2	43.3	83.2	42.1	47.7
10.Return on capital employed ( F7 as % of avg. G1)	27.4	23.3	47.8	25.8	30.5
11.Dividend cover ratio [(F7-F8) to F9]	2.9	2.1	5.2	2.2	2.5
12.Inventory Turnover Ratio (F1 to B2)	20.6	14.6	18.8	17.5	23.0
13.Interest cover ratio [(F7+ F6(i)) to F6(i)]	11.7	9.0	15.3	8.3	9.9
14.Net profit margin (F7 as % of F1)	11.0	9.4	18.3	10.4	12.8
15.Earning per share after tax (Rs./share) [(F7-F8)/No. of Ord. shares]	11.2	9.0	25.8	11.7	18.7
16.Break-up value shares (Rs./share) (E/No. of Ord. shares)	30.7	35.2	42.3	46.5	64.6

\* Companies listed at KSE