

8.1 Combined Consumer Price Index Numbers

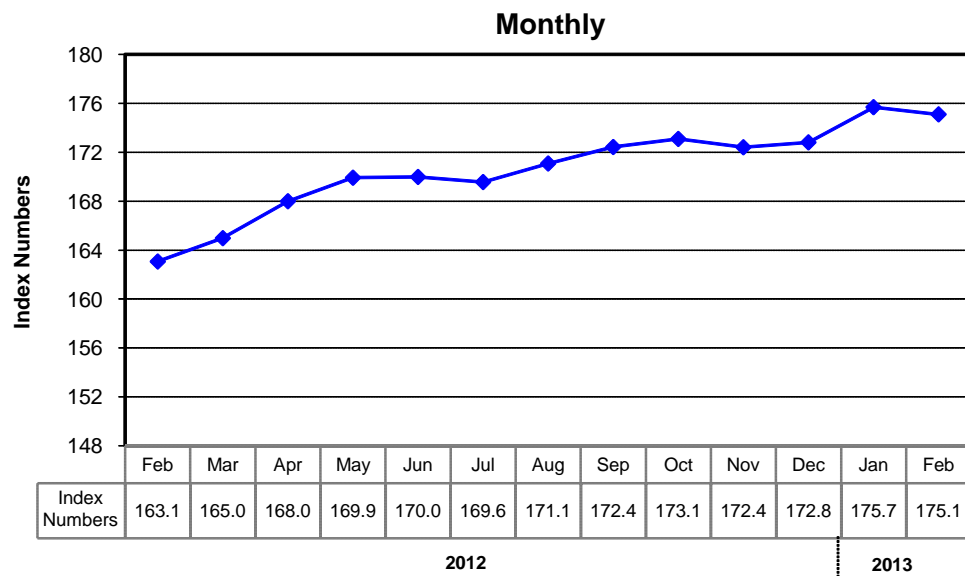
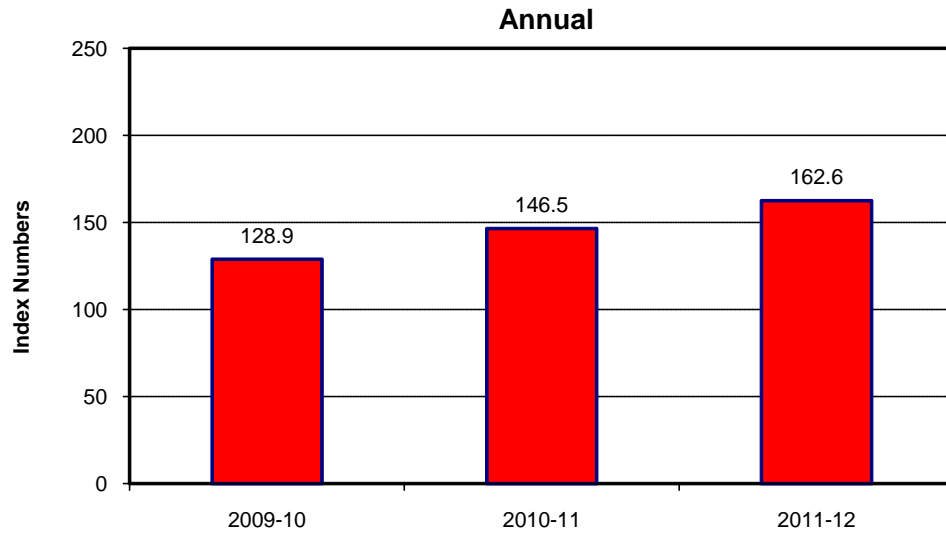
By Commodity Groups - All Urban

(2007-08=100)

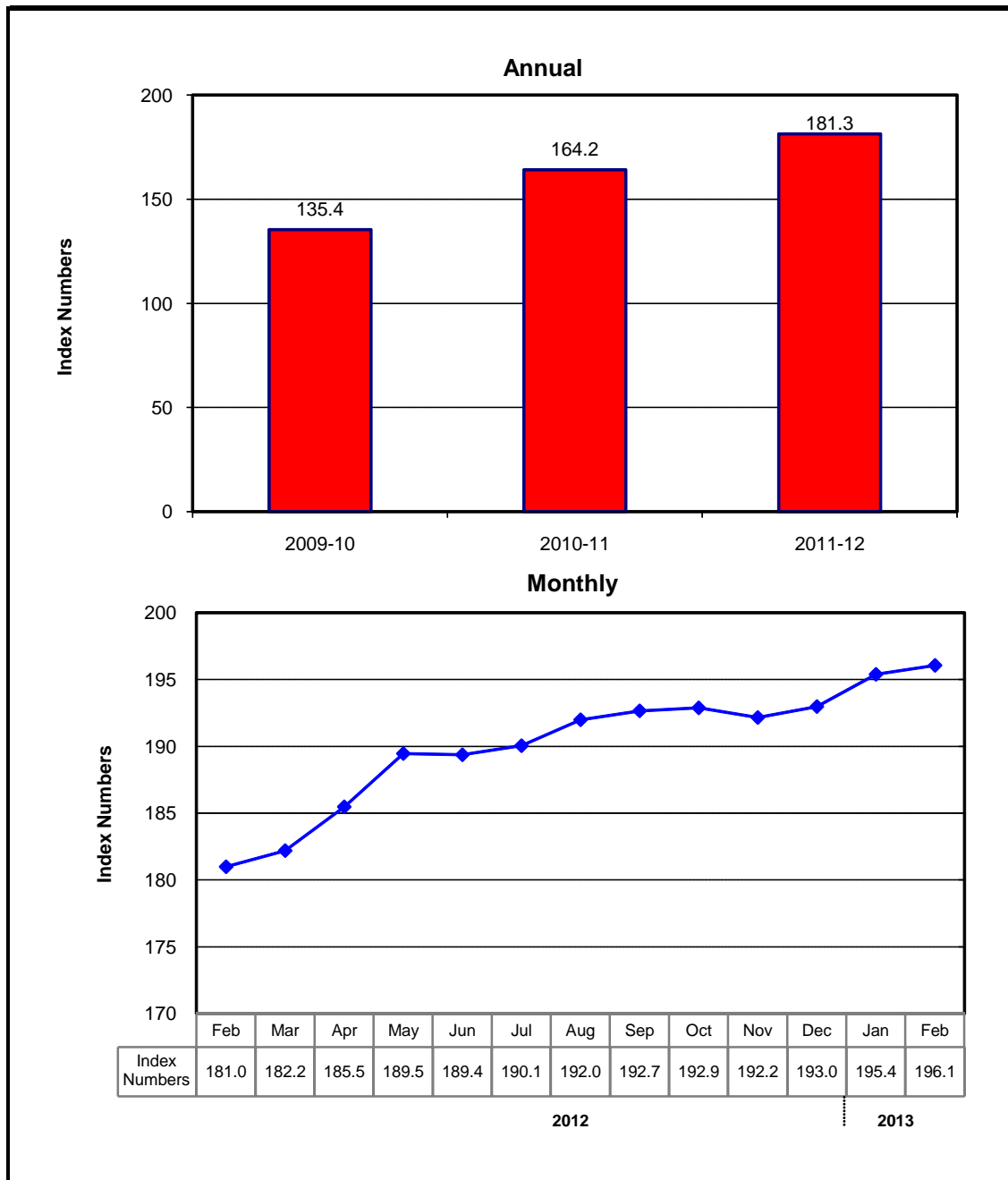
YEAR / MONTH	General	Food and Non- Alcoholic Beverages	Alcoholic and Beverages Tobacco	Clothing and Footwear	Housing Water, Elec, Gas and other Fuels	Furnishing & Household Equip. Mai- ntance etc	Health	Transport	Communi- cation	Recre- ation and Culture	Educational	Restaurants And Hotels	Misc.
2009-10	128.85	139.10	136.71	119.19	122.14	123.89	114.32	132.79	109.65	127.87	119.39	140.36	133.63
2010-11	146.45	164.61	151.64	133.32	135.27	135.59	123.79	149.01	122.47	134.62	128.17	164.04	152.45
2011-12	162.57	182.77	165.01	153.45	146.17	160.28	137.97	171.39	122.93	145.35	143.83	185.82	181.47
2012 Mar.	164.98	183.98	163.53	159.35	147.65	166.88	141.00	178.37	122.42	144.41	145.10	191.63	188.59
Apr.	168.00	188.00	168.74	161.68	149.07	168.78	141.74	185.94	122.36	146.51	151.36	192.76	188.70
May	169.93	188.29	169.22	163.22	153.27	171.52	144.07	185.93	122.38	163.95	151.31	193.79	188.15
Jun.	169.99	187.05	188.05	164.08	153.35	173.20	147.42	182.98	123.62	164.37	152.28	195.10	190.51
Jul	169.57	190.58	189.36	165.67	147.92	174.01	149.84	178.58	123.56	164.63	152.71	196.24	190.67
Aug.	171.09	192.43	189.91	167.23	147.95	174.05	152.39	186.61	123.56	165.19	153.60	196.56	192.44
Sep.	172.44	193.80	190.34	168.51	147.99	175.40	153.94	194.25	123.56	165.24	153.87	197.85	195.65
Oct.	173.10	193.56	190.43	170.38	149.95	176.84	155.13	191.22	123.68	165.94	154.48	200.30	198.94
Nov.	172.42	192.84	190.69	172.18	150.01	178.63	156.08	180.75	123.75	166.19	154.78	201.11	200.34
Dec.	172.82	192.71	191.04	175.58	150.10	180.08	156.76	181.04	123.85	166.69	154.93	202.44	201.20
2013 Jan.	175.70	196.52	191.17	177.05	152.73	180.97	157.50	186.75	128.62	166.96	155.07	204.48	201.76
Feb.	175.11	193.70	191.17	178.43	152.79	181.91	158.02	188.35	128.63	167.30	155.83	207.28	202.74
Mar.	175.82	194.76	191.16	179.42	152.91	182.47	158.49	189.11	128.63	170.63	157.68	208.05	202.64

Source : Pakistan Bureau of Statistics

Index Numbers of Consumer Prices (2007- 08=100)



Index Numbers of Wholesale Prices (2007- 08=100)



8.2 Index Numbers of Wholesale Prices by Commodity Groups (2007-08=100)

YEAR / MONTH		General	Agriculture Forestry & Fishery Products	Ores & Minerals, Electricity Gas & Water	Food Products, Beverages and Tobacco, Textiles, Apparel and Leather Products	Other Transportable Goods except Metal Products, Machinery and Equipments	Metal Products Machinery & Equipments
2009-10		135.40	142.02	139.76	135.02	135.41	111.10
2010-11		164.17	183.20	159.13	166.49	155.77	128.10
2011-12		181.29	185.03	182.74	176.07	194.64	152.55
2012	Mar.	182.20	178.44	188.10	174.81	204.15	155.23
	Apr.	185.48	183.68	188.10	177.32	208.92	156.18
	May	189.46	185.78	214.79	179.06	207.39	156.46
	Jun.	189.37	189.25	215.23	180.94	199.83	157.22
	Jul.	190.05	197.57	206.19	182.41	195.56	158.63
	Aug.	191.99	196.79	207.36	183.90	202.63	158.17
	Sep.	192.66	194.63	207.86	184.53	207.14	157.74
	Oct.	192.88	194.13	207.79	185.83	206.53	158.67
	Nov.	192.16	189.19	207.85	187.56	206.43	159.04
	Dec.	192.98	192.97	208.45	188.44	204.13	159.19
	Jan.	195.39	196.33	216.13	190.57	204.00	159.07
	Feb.	196.06	198.37	215.52	190.68	204.80	159.08
	Mar.	196.57	199.84	214.54	190.65	206.04	158.87

Source : Pakistan Bureau of Statistics

8.3 Combined Sensitive Price Indicator (SPI) by Income Groups (2007-08 =100)

YEAR / MONTH		INCOME GROUP					Combined
		Group-I	Group-II	Group-III	Group-IV	Group-V	
		Up to Rs.8,000	Rs.8,001 to Rs.12,000	Rs.12,001 To Rs.18,000	Rs.18,001 to Rs.35,000	Above Rs.35,000	
2009-10		136.82	138.05	140.26	140.03	142.54	139.84
2010-11		159.47	161.20	160.54	166.24	168.82	164.02
2011-12		170.77	174.10	173.67	181.09	185.59	178.67
2012	Mar.	172.09	175.25	174.92	183.33	188.73	180.79
	Apr.	174.97	178.27	178.05	186.59	192.12	184.03
	May	174.72	179.47	178.88	187.24	193.03	184.88
	Jun.	177.14	183.99	182.69	190.50	195.71	188.14
	Jul.	178.05	184.66	183.65	184.94	185.01	183.98
	Aug.	180.34	186.89	185.92	187.33	187.77	186.47
	Sep.	182.53	188.75	187.58	188.89	189.52	188.21
	Oct.	181.77	187.94	186.74	187.98	188.58	187.32
	Nov.	181.82	188.00	186.79	188.03	188.57	187.35
	Dec.	181.91	188.29	187.22	188.65	189.42	187.95
2013	Jan.	185.40	191.66	190.30	191.70	192.05	190.89
	Feb.	185.53	191.63	190.18	191.51	191.94	190.79
	Mar.	186.98	192.97	191.50	192.74	193.02	192.01

Note: SPI figures revised as it is computed on 53 items instead of 51 items.

Source : Pakistan Bureau of Statistics

8.4 Bullion Prices

			(Rupees per 10 Grams)	
YEAR / MONTH			Karachi	
			GOLD TEZABI	SILVER TEZABI
2007-08			16,695	306
2008-09			22,195	329
2009-10			29,587	215
2010-11			37,658	776
2011-12			48,444	937
2012 Mar.			49,754	945
Apr.			48,811	901
May			47,419	833
Jun.			48,937	798
Jul.			48,720	807
Aug.			49,506	828
Sep.			52,537	965
Oct.			53,424	963
Nov.			53,664	966
Dec.			53,467	972
2013 Jan.			53,490	968
Feb.			52,968	955
Mar.			51,560	907

Figures are monthly / yearly averages

Source: Daily Dawn/Business Recorder