

8.1 Combined Consumer Price Index Numbers

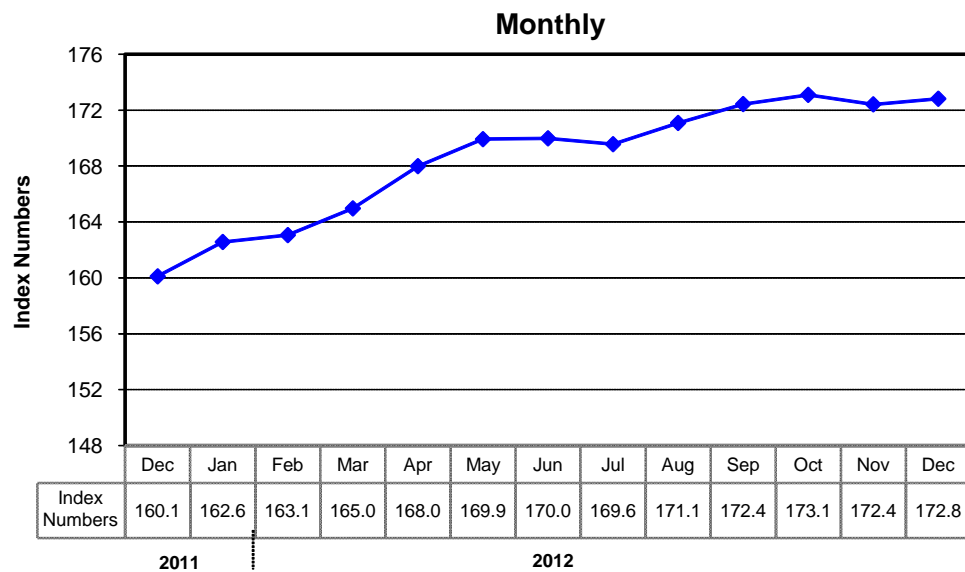
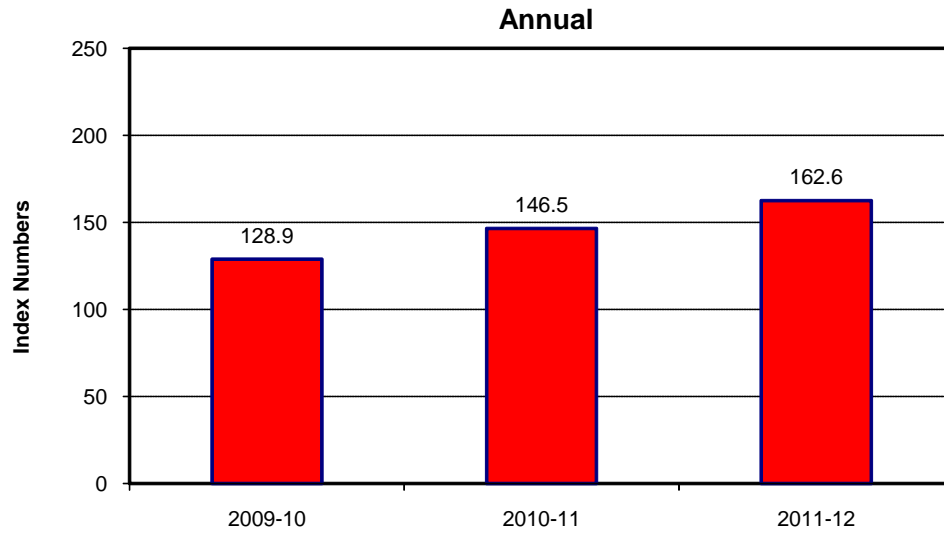
By Commodity Groups - All Urban

(2007-08=100)

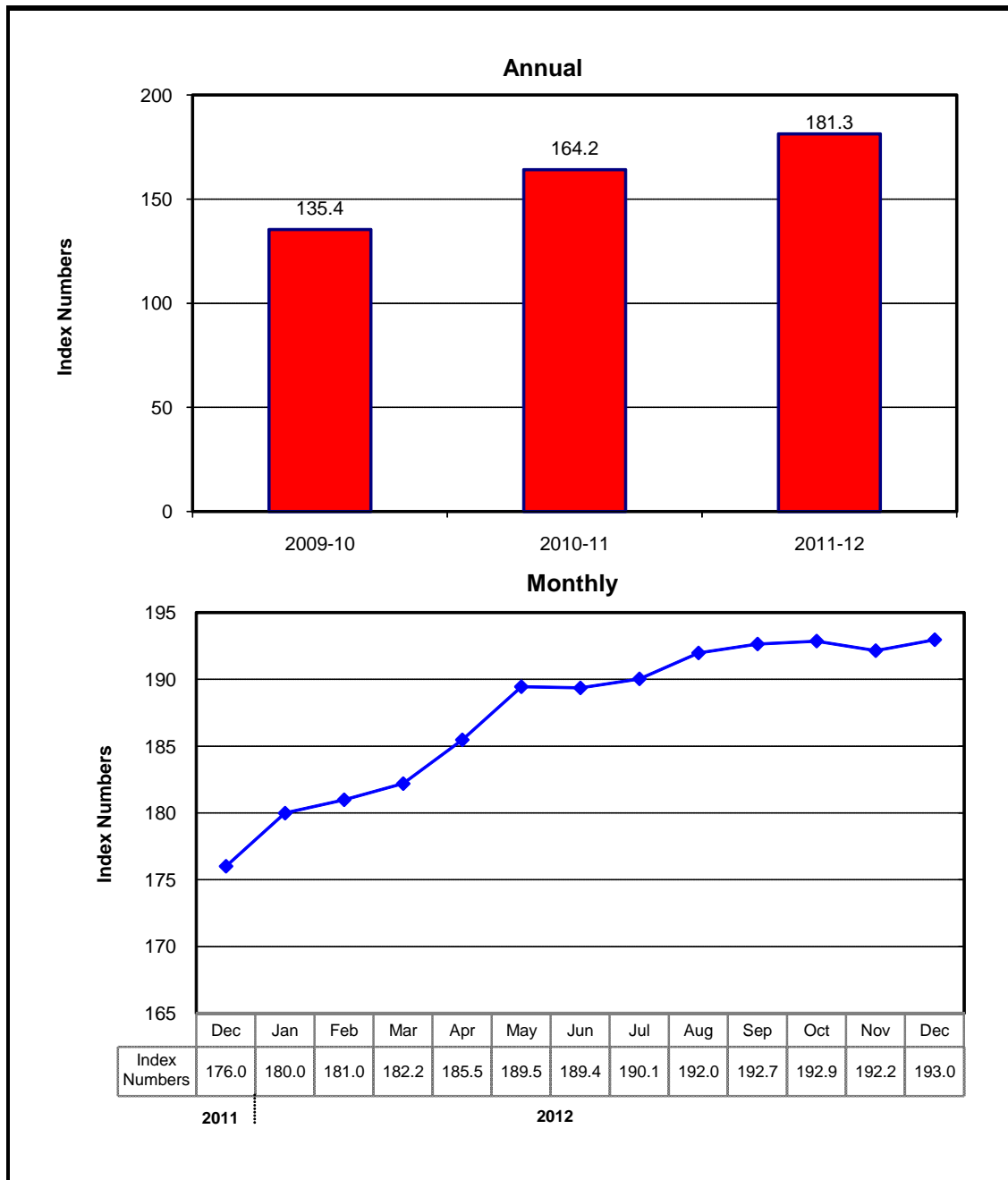
YEAR / MONTH		General	Food And Non- Alcoholic Beverages	Alcoholic Beverages and Tobacco	Clothing and Footwear	Housing Water, Elec, Gas and other Fuels	Furnishing & Household Equip. Mai- ntance etc	Health	Transport	Communi- cation	Recre- ation and Culture	Educational	Restaurants And Hotels	Misc.
2009-10		128.85	139.10	136.71	119.19	122.14	123.89	114.32	132.79	109.65	127.87	119.39	140.36	133.63
2010-11		146.45	164.61	151.64	133.32	135.27	135.59	123.79	149.01	122.47	134.62	128.17	164.04	152.45
2011-12		162.57	182.77	165.01	153.45	146.17	160.28	137.97	171.39	122.93	145.35	143.83	185.82	181.47
2011	Dec.	160.12	179.79	161.68	151.61	144.16	160.35	137.16	166.18	123.10	141.43	140.80	182.94	180.79
2012	Jan.	162.58	182.60	161.68	153.60	147.43	162.82	138.53	168.41	122.32	141.98	141.09	185.23	182.60
	Feb.	163.07	181.19	161.27	154.19	147.59	165.48	139.60	174.98	122.34	143.03	143.82	188.82	186.70
	Mar.	164.98	183.98	163.53	159.35	147.65	166.88	141.00	178.37	122.42	144.41	145.10	191.63	188.59
	Apr.	168.00	188.00	168.74	161.68	149.07	168.78	141.74	185.94	122.36	146.51	151.36	192.76	188.70
	May	169.93	188.29	169.22	163.22	153.27	171.52	144.07	185.93	122.38	163.95	151.31	193.79	188.15
	Jun.	169.99	187.05	188.05	164.08	153.35	173.20	147.42	182.98	123.62	164.37	152.28	195.10	190.51
	Jul	169.57	190.58	189.36	165.67	147.92	174.01	149.84	178.58	123.56	164.63	152.71	196.24	190.67
	Aug.	171.09	192.43	189.91	167.23	147.95	174.05	152.39	186.61	123.56	165.19	153.60	196.56	192.44
	Sep.	172.44	193.80	190.34	168.51	147.99	175.40	153.94	194.25	123.56	165.24	153.87	197.85	195.65
	Oct.	173.10	193.56	190.43	170.38	149.95	176.84	155.13	191.22	123.68	165.94	154.48	200.30	198.94
	Nov.	172.42	192.84	190.69	172.18	150.01	178.63	156.08	180.75	123.75	166.19	154.78	201.11	200.34
	Dec.	172.82	192.71	191.04	175.58	150.10	180.08	156.76	181.04	123.85	166.69	154.93	202.44	201.20

Source : Pakistan Bureau of Statistics

(2007- 08=100)



Index Numbers of Wholesale Prices (2007- 08=100)



8.2 Index Numbers of Wholesale Prices by Commodity Groups (2007-08=100)

YEAR / MONTH		General	Agriculture Forestry & Fishery Products	Ores & Minerals, Electricity Gas & Water	Food Products, Beverages and Tobacco, Textiles, Apparel and Leather Products	Other Transportable Goods except Metal Products, Machinery and Equipments	Metal Product Machinery & Equipment
2009-10		135.40	142.02	139.76	135.02	135.41	111.10
2010-11		164.17	183.20	159.13	166.49	155.77	128.10
2011-12		181.29	185.03	182.74	176.07	194.64	152.55
2011	Dec.	176.01	178.32	170.51	170.36	192.97	153.46
2012	Jan.	179.99	180.98	185.61	172.47	196.36	154.15
	Feb.	180.99	179.07	187.55	173.34	200.50	154.87
	Mar.	182.20	178.44	188.10	174.81	204.15	155.23
	Apr.	185.48	183.68	188.10	177.32	208.92	156.18
	May	189.46	185.78	214.79	179.06	207.39	156.46
	Jun.	189.37	189.25	215.23	180.94	199.83	157.22
	Jul.	190.05	197.57	206.19	182.41	195.56	158.63
	Aug.	191.99	196.79	207.36	183.90	202.63	158.17
	Sep.	192.66	194.63	207.86	184.53	207.14	157.74
	Oct.	192.88	194.13	207.79	185.83	206.53	158.67
	Nov.	192.16	189.19	207.85	187.56	206.43	159.04
	Dec.	192.98	192.97	208.45	188.44	204.13	159.19

Source : Pakistan Bureau of Statistics

8.3 Combined Sensitive Price Indicator (SPI) by Income Groups (2007-08 =100)

YEAR / MONTH		INCOME GROUP					Combined
		Group-I	Group-II	Group-III	Group-IV	Group-V	
		Up to Rs.8,000	Rs.8,001 to Rs.12,000	Rs.12,001 To Rs.18,000	Rs.18,001 to Rs.35,000	Above Rs.35,000	
2009-10		136.82	138.05	140.26	140.03	142.54	139.84
2010-11		159.47	161.20	160.54	166.24	168.82	164.02
2011-12		170.77	174.10	173.67	181.09	185.59	178.67
2011	Dec.	168.09	170.75	170.48	177.31	181.46	175.04
2012	Jan.	169.77	172.85	172.56	180.87	185.98	178.25
	Feb.	169.56	172.79	172.60	181.14	186.80	178.63
	Mar.	172.09	175.25	174.92	183.33	188.73	180.79
	Apr.	174.97	178.27	178.05	186.59	192.12	184.03
	May	174.72	179.47	178.88	187.24	193.03	184.88
	Jun.	177.14	183.99	182.69	190.50	195.71	188.14
	Jul.	178.05	184.66	183.65	184.94	185.01	183.98
	Aug.	180.34	186.89	185.92	187.33	187.77	186.47
	Sep.	182.53	188.75	187.58	188.89	189.52	188.21
	Oct.	181.77	187.94	186.74	187.98	188.58	187.32
	Nov.	181.82	188.00	186.79	188.03	188.57	187.35
	Dec.	181.91	188.29	187.22	188.65	189.42	187.95

Note: SPI figures revised as it is computed on 53 items instead of 51 items.

Source : Pakistan Bureau of Statistics

8.4 Bullion Prices

			(Rupees per 10 Grams)	
YEAR / MONTH			Karachi	
			GOLD TEZABI	SILVER TEZABI
2007-08			16,695	306
2008-09			22,195	329
2009-10			29,587	215
2010-11			37,658	776
2011-12			48,444	937
2011	Dec.		47,839	884
2012	Jan.		48,240	876
	Feb.		50,701	943
	Mar.		49,754	945
	Apr.		48,811	901
	May		47,419	833
	Jun.		48,937	798
	Jul.		48,720	807
	Aug.		49,506	828
	Sep.		52,537	965
	Oct.		53,424	963
	Nov.		53,664	966
	Dec.		53,467	972

Figures are monthly / yearly averages

Source: Daily Dawn