

7.1 KSE 100 & All Share Index

Sector Name	Jun-11	Jun-12	Jun-13	2012				
				Jun.	Jul.	Aug.	Sep.	Oct.
KSE 100 Index (1991 = 1,000)	12,496.03	13,801.41	21,005.69	13,801.41	14,577.00	15,391.58	15,444.82	15,910.11
KSE General Index (1995 = 1,000)	8,663.10	9,708.31	14,987.53	9,708.31	10,264.58	10,844.53	10,897.78	11,156.81
1. Oil & Gas	13,077.44	12,992.54	17,385.78	12,992.54	13,546.31	14,679.49	13,916.09	13,924.03
2. Chemicals	12,955.86	10,606.24	11,356.80	10,606.24	10,804.30	10,982.25	10,712.96	10,820.38
3. Forestry & Paper	9,181.25	10,500.87	14,860.59	10,500.87	11,138.20	12,218.76	12,346.11	13,324.44
4. Industrial Metals & Mining	7,569.61	6,092.12	8,336.64	6,092.12	6,009.89	6,950.61	7,075.43	6,617.17
5. Construction & Materials	7,738.12	12,820.48	25,522.95	12,820.48	14,223.18	15,530.80	15,733.26	16,415.44
6. General Industrials	8,873.13	8,119.98	11,756.27	8,119.98	8,460.87	9,054.93	8,939.51	9,166.69
7. Electronic & Electrical Equipment	9,250.52	7,995.48	13,295.40	7,995.48	9,447.58	10,113.58	11,818.86	11,126.66
8. Industrial Engineering	11,113.24	9,225.14	10,236.00	9,225.14	9,777.78	10,048.71	9,269.03	9,717.13
9. Industrial Transportation	6,580.87	9,728.60	15,443.41	9,728.60	10,369.41	10,334.91	10,000.30	10,218.77
10. Support Services	9,441.63	12,613.49	37,582.39	12,613.49	12,908.54	14,937.05	13,388.03	13,793.74
11. Automobile & Parts	9,724.07	10,587.79	16,151.05	10,587.79	11,259.26	12,584.62	11,862.42	11,170.23
12. Beverages	11,067.49	11,427.11	33,897.86	11,427.11	14,445.84	14,239.38	16,254.19	22,306.03
13. Food Producers	27,076.67	27,601.63	49,110.72	27,601.63	29,412.09	30,412.15	32,268.28	33,947.82
14. Household Goods	8,416.83	10,934.17	11,110.14	10,934.17	10,935.93	11,286.99	10,930.68	11,219.52
15. Leisure Goods	6,610.48	4,191.60	6,324.49	4,191.60	4,014.64	4,321.14	4,814.08	4,662.41
16. Personal Goods	9,793.32	10,466.05	18,825.48	10,466.05	11,235.33	12,246.31	11,870.37	13,026.34
17. Tobacco	8,374.42	5,706.00	12,810.53	5,706.00	5,268.33	5,810.18	5,583.77	5,964.48
18. Health Care Equipment & Services	17,999.14	16,445.11	23,371.61	16,445.11	17,033.81	21,250.14	24,803.54	20,189.45
19. Pharma & Bio-Tech	8,013.90	7,825.21	17,289.33	7,825.21	9,851.23	10,574.33	10,365.94	10,195.09
20. Media	3,638.07	1,740.11	2,570.34	1,740.11	1,740.39	2,050.79	2,239.14	2,176.41
21. Travel & Leisure	9,156.95	7,931.39	13,331.48	7,931.39	7,939.83	8,377.58	8,054.00	7,778.02
22. Fixed Line Telecommunication	6,985.01	6,762.74	11,073.08	6,762.74	6,900.10	9,012.28	9,562.40	8,288.99
23. Electricity	10,085.46	10,758.03	16,841.63	10,758.03	11,205.61	12,552.26	12,481.86	12,137.58
24. Gas, Water & Multi-utilities	10,794.54	9,514.72	10,182.89	9,514.72	10,183.72	10,159.64	11,072.97	11,291.12
25. Banks	7,893.87	8,203.88	9,736.50	8,203.88	8,875.73	8,734.92	8,282.64	8,402.63
26. Non-Life Insurance	6,106.79	6,121.82	8,052.43	6,121.82	6,465.81	6,609.32	6,848.14	7,667.67
27. Life Insurance	6,391.39	7,328.04	8,693.32	7,328.04	7,412.47	7,925.76	7,865.87	8,734.27
28. Real Estate Investment & Services	3,379.11	3,130.19	6,603.51	3,130.19	3,045.51	4,760.76	4,672.50	4,553.21
29. Financial Services	2,674.91	4,009.19	4,306.13	4,009.19	4,535.34	4,482.85	4,156.92	4,287.25
30. Equity Investment Instruments	6,416.82	8,661.29	13,546.54	8,661.29	9,513.87	9,973.01	9,584.15	9,236.73
31. Software & Computer Services	6,412.62	4,303.28	10,183.05	4,303.28	4,836.09	5,077.42	6,807.50	5,757.53
32. Technology Hardware & Equipment	9,242.77	14,004.20	10,994.06	14,004.20	12,601.55	11,942.55	11,915.84	11,875.73

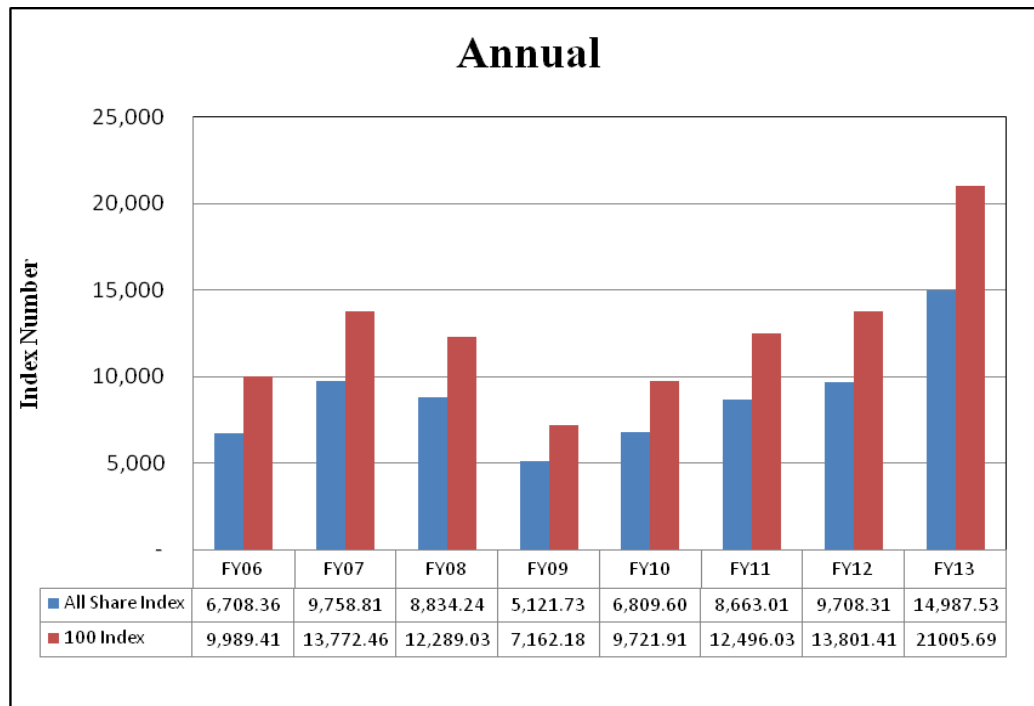
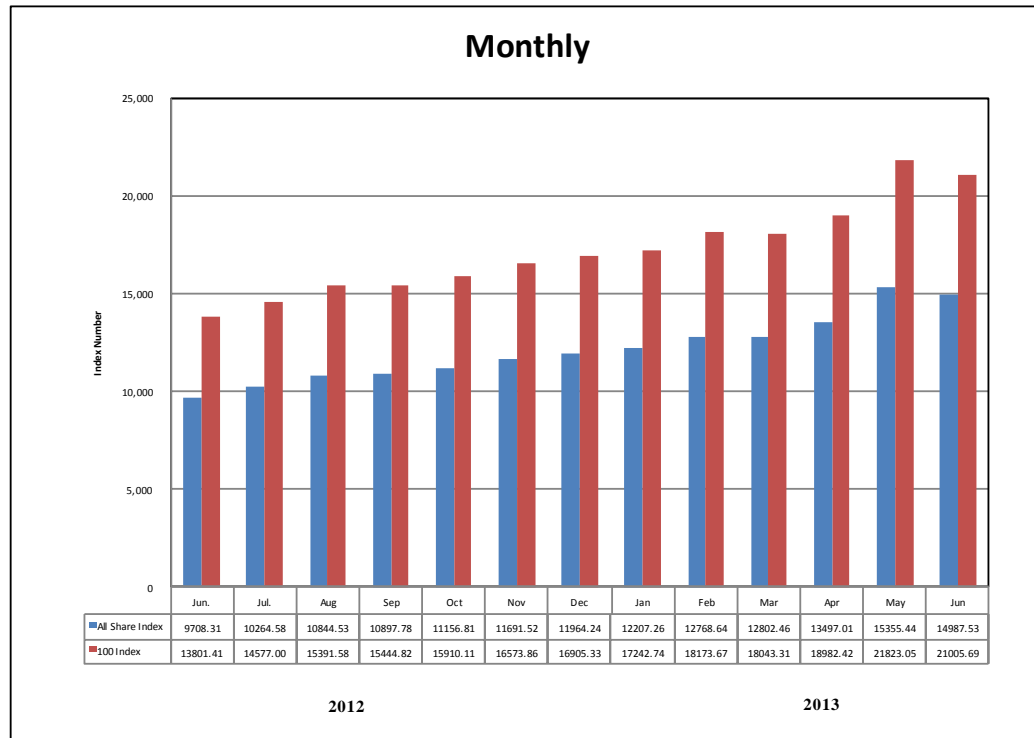
As per last working day.

7.1 KSE 100 & All Share Index

Sector Name	2012		2013					
	Nov.	Dec.	Jan.	Feb.	Mar.	Apr.	May	Jun.
KSE 100 Index (1991 = 1,000)	16,573.86	16,905.33	17,242.74	18,173.67	18,043.31	18,982.42	21,823.05	21,005.69
KSE General Index (1995 = 1,000)	11,691.52	11,964.24	12,207.26	12,768.64	12,802.46	13,497.01	15,355.44	14,987.53
1. Oil & Gas	14,323.89	14,664.45	14,777.36	15,728.36	15,147.00	15,273.29	18,217.93	17,385.78
2. Chemicals	10,831.56	11,032.51	11,118.23	11,325.94	11,262.20	11,751.02	12,368.74	11,356.80
3. Forestry & Paper	12,912.29	12,947.26	12,404.53	12,034.38	11,706.22	14,123.48	14,818.00	14,860.59
4. Industrial Metals & Mining	6,681.41	6,853.70	6,781.10	6,541.63	6,482.22	7,324.63	7,718.74	8,336.64
5. Construction & Materials	17,373.65	17,482.88	18,548.10	19,049.96	20,470.65	20,504.94	23,916.53	25,522.95
6. General Industrials	9,559.76	9,531.66	9,448.01	10,158.73	9,965.29	11,034.23	12,345.42	11,756.27
7. Electronic & Electrical Equipment	10,457.26	10,106.53	10,006.57	9,781.88	9,434.99	10,159.82	11,619.05	13,295.40
8. Industrial Engineering	10,322.74	10,789.65	11,367.21	10,201.86	9,929.03	9,692.36	10,210.02	10,236.00
9. Industrial Transportation	13,827.44	14,688.03	15,584.78	13,546.59	13,552.90	14,646.48	15,338.62	15,443.41
10. Support Services	16,080.40	20,616.85	26,149.12	27,144.91	28,988.98	39,905.96	43,557.23	37,582.39
11. Automobile & Parts	11,904.30	12,253.16	12,753.62	13,951.13	14,197.38	16,108.96	18,552.69	16,151.05
12. Beverages	21,008.60	18,776.07	19,216.01	20,529.80	20,720.53	31,517.42	37,311.73	33,897.86
13. Food Producers	35,176.40	36,012.59	37,055.31	38,541.50	42,267.31	49,017.78	50,035.00	49,110.72
14. Household Goods	10,650.27	10,667.11	10,511.41	10,382.44	10,367.21	12,232.94	12,451.60	11,110.14
15. Leisure Goods	8,659.67	9,659.75	7,662.72	6,947.00	6,082.77	6,138.06	6,596.24	6,324.49
16. Personal Goods	14,851.39	15,032.36	15,196.74	15,742.12	16,374.59	17,907.28	18,570.74	18,825.48
17. Tobacco	6,017.14	5,975.46	7,366.02	7,520.57	9,644.65	11,698.76	11,339.62	12,810.53
18. Health Care Equipment & Services	24,299.74	21,515.37	23,212.51	23,689.80	23,371.60	26,553.75	23,901.97	23,371.61
19. Pharma & Bio-Tech	10,942.83	11,162.53	10,768.39	11,216.22	11,152.86	13,050.28	14,256.97	17,289.33
20. Media	2,082.01	2,326.70	2,189.10	2,200.76	2,169.52	1,983.61	2,794.48	2,570.34
21. Travel & Leisure	8,094.42	9,065.71	8,598.53	11,317.62	12,170.03	10,859.19	14,164.42	13,331.48
22. Fixed Line Telecommunication	8,967.23	8,595.51	9,218.21	11,705.37	10,214.62	9,160.34	11,141.64	11,073.08
23. Electricity	12,503.71	12,649.33	13,492.04	14,197.22	13,876.25	14,473.30	17,373.56	16,841.63
24. Gas, Water & Multi-utilities	11,460.39	11,125.45	10,997.45	10,139.11	8,608.21	8,173.24	11,016.26	10,182.89
25. Banks	8,911.07	9,217.81	9,429.01	9,546.07	8,123.89	8,367.12	9,986.60	9,736.50
26. Non-Life Insurance	7,897.12	7,427.31	7,379.25	7,710.18	7,521.83	7,803.77	8,418.38	8,052.43
27. Life Insurance	9,473.38	9,763.79	8,941.21	9,323.32	8,437.64	8,390.73	9,277.34	8,693.32
28. Real Estate Investment & Services	4,525.81	4,759.03	4,862.81	6,064.58	5,669.20	5,286.99	6,940.77	6,603.51
29. Financial Services	4,911.35	4,845.40	4,922.61	5,168.91	4,467.69	4,158.31	4,747.34	4,306.13
30. Equity Investment Instruments	9,838.61	10,307.84	10,495.67	10,542.54	10,611.76	11,182.50	13,416.01	13,546.54
31. Software & Computer Services	5,976.94	5,986.34	6,174.41	7,562.86	6,528.55	7,948.36	8,659.85	10,183.05
32. Technology Hardware & Equipment	11,354.76	12,076.13	9,484.57	9,097.19	9,030.40	8,389.17	10,820.41	10,994.06

As per last working day.

Karachi Stock Exchange Index



7.2 Karachi Stock Exchange Indicators

Month	KSE 100 Index (1991 = 1,000)				
	FY09	FY10	FY11	FY12	FY13
Jul.	10,583.58	7,720.93	10,519.02	12,190.37	14,577.00
Aug.	9,208.26	8,675.67	9,813.05	11,070.58	15,391.58
Sep.	9,179.68	9,349.68	10,013.31	11,761.97	15,444.82
Oct.	9,182.88	9,159.18	10,598.40	11,868.88	15,910.11
Nov.	9,187.10	9,206.21	11,234.76	11,532.83	16,573.86
Dec.	5,865.01	9,386.92	12,022.46	11,347.66	16,905.33
Jan.	5,377.42	9,614.19	12,359.36	11,874.89	17,242.74
Feb.	5,727.46	9,657.79	11,289.23	12,877.88	18,173.67
Mar.	6,860.22	10,178.43	11,809.54	13,761.76	18,043.31
Apr.	7,202.10	10,428.12	12,057.54	13,990.38	18,982.42
May	7,276.61	9,326.42	12,123.15	13,786.62	21,823.05
Jun.	7,162.18	9,721.91	12,496.03	13,801.41	21,005.69

Month	KSE All Share Index (1995 = 1,000)				
	FY09	FY10	FY11	FY12	FY13
Jul.	7,636.25	5,515.95	7,348.91	8,449.87	10,264.58
Aug.	6,655.99	6,154.81	6,849.60	7,693.59	10,844.53
Sep.	6,640.66	6,651.16	6,996.83	8,159.12	10,897.78
Oct.	6,638.96	6,513.12	7,382.41	8,215.84	11,156.81
Nov.	6,641.61	6,529.44	7,818.10	7,984.53	11,691.52
Dec.	4,400.76	6,665.55	8,359.31	7,856.82	11,964.24
Jan.	4,016.84	6,821.14	8,569.04	8,225.97	12,207.26
Feb.	4,221.57	6,844.07	7,855.24	8,946.64	12,768.64
Mar.	4,931.51	7,182.37	8,225.74	9,649.95	12,802.46
Apr.	5,168.77	7,331.68	8,397.81	9,812.71	13,497.01
May	5,216.66	6,546.90	8,439.75	9,714.33	15,355.44
Jun.	5,121.73	6,809.60	8,663.01	9,708.31	14,987.53

Month	Karachi Meezan Index 30 (KMI-30) Index (Base: June 2008)*				
	FY09	FY10	FY11	FY12	FY13
Jul.	-	11,674.75	15,973.54	21,203.61	25,121.52
Aug.	-	11,674.75	15,205.07	20,061.90	27,236.72
Sep.	11,224.87	13,648.34	15,682.85	21,313.30	27,458.04
Oct.	11,224.18	13,245.82	16,715.36	22,166.78	27,821.39
Nov.	11,224.18	13,436.50	17,999.33	21,166.76	28,516.64
Dec.	6,703.46	13,754.06	19,071.59	20,137.71	29,125.55
Jan.	6,894.75	14,215.79	20,003.28	21,622.44	29,695.20
Feb.	7,623.74	14,363.02	18,671.73	22,885.39	31,362.24
Mar.	9,572.12	15,429.59	20,063.68	23,571.97	31,598.72
Apr.	10,167.69	15,776.16	20,415.39	24,225.87	32,963.96
May	10,609.34	14,311.59	20,628.89	23,976.43	37,642.68
Jun.	10,647.69	14,573.54	20,936.20	23,776.48	36,713.89

MI-30 was introduced by the KSE in Sep 2008.
As per last working day.

7.3 Market Capitalization of KSE all Shares

(Million Rupees)

Sector Name		Jun-11	Jun-12	Jun-13	2012				
					Jun.	Jul.	Aug.	Sep.	Oct.
1	Oil & Gas	1,130,488	1,157,464	1,639,745	1,157,464	1,206,797	1,307,751	1,304,690	1,305,435
2	Chemicals	381,534	373,511	397,449	373,511	376,975	383,184	374,917	378,677
3	Forestry & Paper	2,973	3,400	5,896	3,400	3,607	3,957	3,998	4,754
4	Industrial Metals & Mining	15,160	12,201	21,437	12,201	12,037	17,873	18,194	17,016
5	Construction & Materials	64,111	120,112	255,102	120,112	139,577	152,410	154,396	163,540
6	General Industrials	36,585	35,275	50,374	35,275	36,756	39,337	38,835	40,563
7	Electronic & Electrical Equipment	1,357	1,173	1,950	1,173	1,386	1,483	1,734	1,632
8	Industrial Engineering	35,132	29,163	34,306	29,163	30,910	31,767	29,302	30,718
9	Industrial Transportation	12,292	18,171	28,845	18,171	19,368	19,304	18,679	19,087
10	Support Services	987	1,318	3,927	1,318	1,349	1,561	1,399	1,441
11	Automobile & Parts	41,244	46,889	76,424	46,889	49,863	55,732	53,049	49,953
12	Beverages	2,831	3,110	10,144	3,110	3,931	3,875	4,424	6,675
13	Food Producers	385,429	416,531	743,847	416,531	444,143	459,246	487,462	512,944
14	Household Goods	4,500	7,746	17,585	7,746	7,748	7,996	7,744	7,949
15	Leisure Goods	307	195	294	195	187	201	224	217
16	Personal Goods	124,571	140,368	270,658	140,368	150,897	164,499	167,610	186,236
17	Tobacco	35,217	23,995	53,872	23,995	22,155	24,433	23,481	25,082
18	Health Care Equipment & Services	1,714	1,566	2,226	1,566	1,622	2,024	2,362	1,923
19	Pharma & Bio Tech.	32,592	36,574	84,748	36,574	46,043	49,423	48,449	48,317
20	Media	3,141	1,832	2,707	1,832	1,833	2,160	2,358	2,292
21	Travel & Leisure	29,082	25,841	43,435	25,841	25,868	27,295	26,240	25,341
22	Fixed Line Telecommunication	57,464	55,729	91,248	55,729	56,860	74,266	78,799	68,306
23	Electricity	103,102	118,679	186,079	118,679	123,616	138,472	137,695	133,897
24	Gas, Water & Multi-utilities	29,119	26,916	29,918	26,916	28,808	28,740	31,324	31,941
25	Banks	666,020	752,983	952,405	752,983	814,648	801,725	760,214	771,227
26	Non-Life Insurance	45,858	51,364	71,305	51,364	54,251	55,454	58,485	65,484
27	Life Insurance	10,378	11,899	15,308	11,899	12,036	12,869	12,772	14,182
28	Real Estate Investment & Services	699	648	1,367	648	630	985	967	943
29	Financial Services	13,553	21,794	24,301	21,794	24,654	24,369	22,819	23,534
30	Equity Investment Instruments	19,556	20,514	33,495	20,514	22,533	23,621	22,700	22,186
31	Software & Computer Services	1,594	1,070	2,553	1,070	1,202	1,262	1,692	1,431
32	Technology Hardware & Equipment	69	105	1,788	105	2,049	1,942	1,938	1,931
TOTAL		3,288,659	3,518,136	5,154,738	3,518,136	3,724,341	3,919,216	3,898,952	3,964,854

As per last working day

Source: The Karachi Stock Exchange

7.3 Market Capitalization of KSE all Shares

(Million Rupees)

Sector Name		2012		2013					
		Nov.	Dec.	Jan.	Feb.	Mar.	Apr.	May	Jun.
1	Oil & Gas	1,342,923	1,374,855	1,385,441	1,474,601	1,428,595	1,440,506	1,718,230	1,639,745
2	Chemicals	379,068	386,100	389,100	396,369	394,137	411,244	432,863	397,449
3	Forestry & Paper	4,607	4,619	4,426	4,294	4,176	5,039	5,287	5,896
4	Industrial Metals & Mining	17,181	17,624	17,437	16,822	16,669	18,835	19,849	21,437
5	Construction & Materials	173,086	174,741	185,388	190,405	204,605	204,947	239,046	255,102
6	General Industrials	42,871	42,746	42,370	45,558	44,690	47,800	52,494	50,374
7	Electronic & Electrical Equipment	1,534	1,483	1,468	1,435	1,384	1,490	1,704	1,950
8	Industrial Engineering	32,633	34,109	35,935	34,191	33,277	32,484	34,219	34,306
9	Industrial Transportation	25,827	27,435	29,109	25,303	25,314	27,357	28,650	28,845
10	Support Services	1,680	2,154	2,732	2,837	3,029	4,170	4,551	3,927
11	Automobile & Parts	53,236	54,796	57,034	62,389	63,491	72,039	82,967	76,424
12	Beverages	6,287	5,619	5,751	6,144	6,201	9,432	11,166	10,144
13	Food Producers	531,695	544,334	560,875	583,371	640,005	742,220	757,698	743,847
14	Household Goods	16,787	16,814	16,569	16,365	16,341	19,362	19,708	17,585
15	Leisure Goods	403	449	356	323	283	285	307	294
16	Personal Goods	212,871	215,465	217,821	226,261	235,421	257,457	266,995	270,658
17	Tobacco	25,304	25,128	30,976	31,626	40,558	49,196	47,686	53,872
18	Health Care Equipment & Services	2,314	2,049	2,211	2,256	2,226	2,529	2,276	2,226
19	Pharma & Bio Tech.	51,860	52,902	51,034	53,156	52,856	63,969	69,884	84,748
20	Media	2,192	2,450	2,305	2,317	2,285	2,089	2,943	2,707
21	Travel & Leisure	26,372	29,537	28,014	36,873	39,651	35,380	46,149	43,435
22	Fixed Line Telecommunication	73,895	70,831	75,963	96,458	84,174	75,486	91,813	91,248
23	Electricity	138,151	139,760	149,071	156,862	153,315	159,912	191,956	186,079
24	Gas, Water & Multi-utilities	32,420	31,473	31,111	28,682	25,291	24,013	32,366	29,918
25	Banks	818,924	848,873	868,324	879,105	794,005	817,780	976,870	952,405
26	Non-Life Insurance	67,443	64,023	63,609	66,461	64,837	69,104	74,546	71,305
27	Life Insurance	15,382	15,854	14,518	15,139	14,858	14,775	16,336	15,308
28	Real Estate Investment & Services	937	985	1,007	1,255	1,173	1,094	1,437	1,367
29	Financial Services	26,960	26,598	27,235	28,597	24,718	23,006	26,265	24,301
30	Equity Investment Instruments	23,881	25,020	25,476	26,044	26,239	27,650	33,172	33,495
31	Software & Computer Services	1,486	1,488	1,535	1,880	1,623	1,979	2,156	2,553
32	Technology Hardware & Equipment	1,847	1,964	1,542	1,480	1,469	1,364	1,760	1,788
TOTAL		4,152,057	4,242,278	4,325,743	4,514,859	4,446,896	4,663,993	5,293,349	5,154,738

As per last working day

Source: The Karachi Stock Exchange

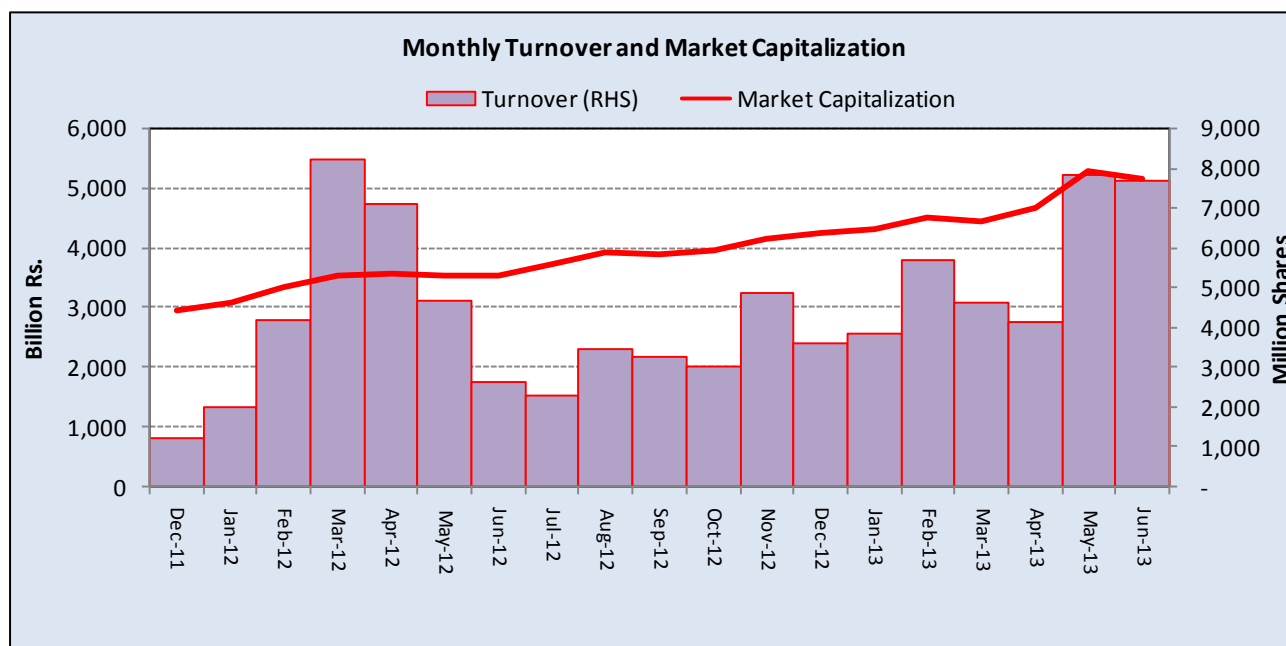
7.4 Turnover of Shares at Karachi Stock Exchange

(Million Nos.)

Month	Monthly Turnover at Ready Counter of the KSE				
	FY09	FY10*	FY11*	FY12*	FY13
Jul.	2,029.34	3,938.21	1,667.74	1,677.19	2,275.63
Aug.	2,162.73	3,198.70	1,339.58	1,240.82	3,476.54
Sep.	540.41	5,087.84	1,389.61	1,685.82	3,240.06
Oct.	322.61	4,887.35	2,710.44	2,314.53	3,014.51
Nov.	137.16	2,395.24	2,369.12	1,043.66	4,857.91
Dec.	900.99	2,700.00	3,301.44	1,232.17	3,600.49
Jan.	3,302.92	3,900.34	3,926.15	1,986.80	3,858.08
Feb.	3,218.12	3,290.38	2,107.85	4,207.41	5,683.67
Mar.	3,805.28	3,702.59	2,424.15	8,244.90	4,643.78
Apr.	6,490.73	4,615.47	1,817.56	7,113.63	4,142.79
May	2,729.38	2,267.85	2,089.50	4,657.19	7,827.77
Jun.	2,693.11	2,975.17	2,875.01	2,607.28	7,697.54
Total	28,332.78	42,959.14	28,018.15	38,011.40	54,318.77

*Revised-Turnover includes off-market transactions.

Source : The Karachi Stock Exchange



7.5 Financial Statement Analysis of Non-Financial Sector

Overall

(Million Rupees)

ITEMS	2007	2008	2009	2010	2011
A.Non-Current Assets (A1+A3+A5+A6+A7)	1,211,065.8	1,388,602.8	2,126,247.7	2,296,798.6	2,577,953.3
1.Capital work in progress	-	-	335,536.3	308,027.3	252,818.6
2.Operating fixed assets at cost	1,863,049.7	2,090,354.5	2,355,025.5	2,556,850.1	3,129,145.3
3.Operating fixed assets after deducting accumulated depreciation	1,160,345.2	1,329,643.7	1,458,033.9	1,596,529.9	1,915,393.4
4.Depreciation for the year	86,225.3	96,644.8	110,921.0	117,858.1	150,883.3
5.Intangible assets	50,720.6	58,955.6	89,797.5	101,538.7	103,669.3
6.Long term investments	-	3.4	163,563.5	203,501.3	224,655.8
7.Other non-current assets	-	-	79,316.4	87,201.4	81,416.3
B.Current Assets (B1+B2+B3+B4+B5)	1,196,256.0	1,493,811.9	1,455,518.7	1,717,466.0	2,074,105.4
1.Cash & bank balance	169,690.2	172,892.1	166,163.5	177,682.0	161,069.2
2.Inventories	271,532.6	362,027.0	348,195.0	380,344.1	542,930.0
3.Trade Debt	249,058.6	365,627.3	551,532.8	729,126.9	803,291.5
4.Short term investments	239,471.2	250,034.0	79,141.3	93,638.8	106,875.3
5.Other current assets	266,503.3	343,231.5	310,486.2	336,674.2	459,939.4
C.Current Liabilities (C1+C2)	1,041,342.8	1,422,133.5	1,400,046.1	1,670,138.5	1,976,003.6
1.Short term Secured loans	294,263.2	420,103.8	430,904.8	467,677.4	589,881.4
2.Other current liabilities	747,079.5	1,002,029.6	969,141.3	1,202,461.1	1,386,122.3
D.Non-Current Liabilities (D1+D2+D3+D4+D5)	352,081.3	422,795.5	986,966.5	946,382.0	1,080,701.3
1.Long term secured loans	-	86.7	431,996.5	377,927.0	517,950.3
2.Long term unsecured loans	-	-	114,175.2	107,474.9	106,562.1
3.Debentures/TFCs	45,095.4	49,685.8	50,796.3	44,763.9	28,577.2
4.Employees benefit obligations	-	-	51,455.3	61,483.5	40,536.2
5.Other non-current liabilities	306,985.9	373,023.0	338,543.2	354,732.7	387,075.5
E.Shareholders Equity (E1+E2+E3)	1,013,897.7	1,037,485.6	1,194,753.9	1,397,744.1	1,595,353.7
1.Issued, Subscribed & Paid up capital	404,678.0	429,007.3	478,837.3	528,563.2	571,219.2
i).Ordinary Shares	394,509.6	419,555.4	468,331.1	514,344.5	554,761.0
ii).Preference shares	10,168.4	9,451.9	10,506.2	14,218.7	16,458.2
2.Reserves	609,219.7	608,367.3	559,558.1	660,013.2	785,901.5
i).Capital Reserve	-	-	116,752.6	131,463.4	150,608.0
ii).Revenue Reserve	-	(62.0)	433,698.5	515,868.9	633,241.5
3.Surplus on revaluation of fixed assets	-	111.0	156,358.4	209,167.7	238,233.0
F.Operation:					
1.Sales	2,837,922.7	3,356,261.5	3,608,115.6	4,127,410.9	5,001,126.2
i).Local sales (Net)	2,632,698.1	3,104,620.4	3,240,654.1	3,688,311.2	4,419,654.2
ii).Export Sales (Net)	205,224.6	251,641.1	367,461.5	439,099.7	581,472.0
2.Cost of sales	2,431,127.0	2,859,768.5	3,075,281.3	3,520,254.6	4,258,028.2
i).Cost of material	-	660.5	1,581,556.5	1,868,548.6	2,369,084.8
ii).Other input cost	-	54.4	1,492,028.5	1,649,981.8	1,888,943.4
3.Gross Profit	406,795.7	496,492.9	532,834.3	607,156.3	743,098.0
4.General, administrative and other expenses	185,378.1	270,162.0	255,522.1	257,205.0	308,630.1
i).Selling & distribution expenses	-	6.9	97,040.9	106,664.7	132,229.7
ii).Administrative and other expenses	185,378.1	270,155.1	158,481.2	150,540.3	176,400.4
5.Salaries, wages and employee benefits	-	30.4	162,227.2	195,486.5	229,475.9
6.Financial expenses	67,127.4	95,936.5	149,689.9	138,228.6	175,694.6
of which: Interest expenses	-	1.9	111,894.6	101,067.1	135,323.0
7.Net profit before tax	229,298.4	202,877.5	211,565.9	309,496.5	370,022.8
8.Tax provision (current year)	60,628.3	91,995.2	77,630.0	97,335.3	128,074.2
9.Total amount of dividend	97,589.8	106,194.2	118,297.5	123,594.4	143,758.6
10.Total value of bonus shares issued	2,995.8	4,765.0	7,707.8	19,265.7	8,511.6
11.Cash flows from operations	-	14.7	309,734.2	333,313.7	288,365.9
G.Miscellaneous					
1.Total capital employed (E+D)	1,365,979.0	1,460,281.2	2,181,720.3	2,344,126.1	2,676,055.0
2.Total fixed liabilities (D1+D3)	45,095.4	49,772.6	482,792.8	422,690.9	546,527.4
3.Retention in business (F7-F8-F9)	71,080.2	4,688.2	15,638.4	88,566.7	98,190.0
4.Contractual Liabilities (G2+C1)	339,358.7	469,876.4	913,697.6	890,368.3	1,136,408.8
H.Key Performance Indicators					
1.Acid test or quick ratio[(B1+B3+B4) to C]	0.6	0.6	0.6	0.6	0.5
2.Financial expenses as % of sales (F6 as % of F1)	2.4	2.9	4.2	3.4	3.5
3.Trade Debt as % of sales (B3 as % of F1)	8.8	10.9	15.3	17.7	16.1
4.Assets turnover ratio [F1 to (A+B)]	1.2	1.2	1.0	1.0	1.1
5.Current ratio (B to C)	1.2	1.1	1.0	1.0	1.1
6.Cost of goods sold to sales (F2 as % of F1)	85.7	85.2	85.2	85.3	85.1
7.Debt equity ratio [(C+D) to E]	1.4	1.8	2.0	1.9	1.9
8.Return on assets [F7 as % of avg.(A+B)]	10.2	7.7	6.6	8.2	8.4
9.Return of equity (F7 as % of avg. E)	24.0	19.8	19.0	23.9	24.7
10.Return on capital employed (F7 as % of avg. G1)	18.0	14.4	11.6	13.7	14.5
11.Dividend cover ratio [(F7-F8) to F9]	1.7	1.0	1.1	1.7	1.7
12.Inventory Turnover Ratio (F1 to B2)	10.5	9.3	10.4	10.9	9.2
13.Interest cover ratio [(F7+ F6(i)) to F6(i)]	-	-	2.9	4.1	3.7
14.Net profit margin (F7 as % of F1)	8.1	6.0	5.9	7.5	7.4
15.Operating cash flow to debt ratio [F11 to (C+D)]	-	-	0.1	0.1	0.1
16.Earning per share after tax (Rs./share) [(F7-F8)/No. of Ord. shares]	4.3	2.7	2.9	4.1	4.3
17.Break-up value shares (Rs./share) (E/No. of Ord. shares)	25.8	24.8	25.4	27.1	28.6

* Companies listed at KSE

7.6 Financial Statement Analysis of Non-Financial Sector

Private Overall

(Million Rupees)

ITEMS	2007	2008	2009	2010	2011
A.Non-Current Assets (A1+A3+A5+A6+A7)	942,329.1	1,076,264.8	1,659,385.0	1,822,648.8	2,048,178.2
1.Capital work in progress	-	-	298,757.9	269,488.4	212,847.1
2.Operating fixed assets at cost	1,473,193.7	1,641,235.5	1,833,532.5	2,019,960.2	2,527,436.0
3.Operating fixed assets after deducting accumulated depreciation	920,823.3	1,054,614.0	1,123,680.1	1,269,723.1	1,550,336.8
4.Depreciation for the year	66,381.7	74,578.8	83,996.7	91,880.6	120,473.7
5.Intangible assets	21,505.8	21,647.4	37,322.5	39,280.6	40,994.5
6.Long term investments	-	3.4	153,677.2	193,544.7	182,319.7
7.Other non-current assets	-	-	45,947.3	50,612.2	61,680.0
B.Current Assets (B1+B2+B3+B4+B5)	923,248.6	1,137,493.8	1,047,943.5	1,191,688.1	1,454,644.0
1.Cash & bank balance	140,585.1	145,111.7	147,975.6	156,010.4	134,795.2
2.Inventories	235,366.3	297,817.7	301,316.9	315,763.6	441,168.6
3.Trade Debt	160,085.8	232,019.2	319,100.9	401,412.9	472,682.2
4.Short term investments	200,009.6	209,965.4	60,291.4	63,734.6	84,632.3
5.Other current assets	187,201.9	252,579.8	219,258.7	254,766.7	321,365.7
C.Current Liabilities (C1+C2)	783,896.9	1,059,182.4	1,042,562.1	1,214,360.1	1,466,327.9
1.Short term Secured loans	249,183.5	361,617.7	382,178.8	421,024.6	518,707.5
2.Other current liabilities	534,713.3	697,564.8	660,383.3	793,335.5	947,620.5
D.Non-Current Liabilities (D1+D2+D3+D4+D5)	262,447.9	305,483.3	719,702.5	682,634.4	786,822.4
1.Long term secured loans	-	86.7	381,099.3	344,756.6	449,990.1
2.Long term unsecured loans	-	-	105,376.9	98,223.6	97,237.9
3.Debentures/TFCs	31,384.0	37,255.7	31,145.7	27,256.5	15,851.7
4.Employees benefit obligations	-	-	26,761.5	29,479.8	21,130.6
5.Other non-current liabilities	231,063.9	268,140.8	175,319.2	182,917.9	202,612.1
E.Shareholders Equity (E1+E2+E3)	819,233.0	849,092.9	945,063.9	1,117,342.5	1,249,671.9
1.Issued, Subscribed & Paid up capital	318,182.6	341,224.0	388,373.6	433,945.2	469,926.9
i).Ordinary Shares	308,014.1	331,772.1	377,874.9	419,734.1	453,476.3
ii).Preference shares	10,168.4	9,451.9	10,498.7	14,211.2	16,450.7
2.Reserves	501,050.4	507,758.0	444,618.6	500,873.9	580,175.1
i).Capital Reserve	-	-	108,605.2	123,260.3	142,097.1
ii).Revenue Reserve	-	(62.0)	326,906.4	364,932.7	436,025.9
3.Surplus on revaluation of fixed assets	-	111.0	112,071.7	182,523.3	199,569.9
F.Operation:					
1.Sales	1,951,927.6	2,261,072.4	2,414,935.2	2,788,746.9	3,510,395.8
i).Local sales (Net)	1,746,703.0	2,009,432.9	2,047,473.7	2,349,647.2	2,928,923.8
ii).Export Sales (Net)	205,224.6	251,639.5	367,461.5	439,099.7	581,472.0
2.Cost of sales	1,678,644.1	1,942,315.4	2,042,738.5	2,375,515.6	2,965,453.4
i).Cost of material	-	660.5	1,392,215.4	1,672,724.1	2,143,003.0
ii).Other input cost	-	54.4	648,826.9	701,067.2	822,450.4
3.Gross Profit	273,283.5	318,757.0	372,196.7	413,231.3	544,942.4
4.General, administrative and other expenses	133,259.2	186,234.3	195,255.4	202,823.6	245,624.3
i).Selling & distribution expenses	-	6.9	84,183.9	93,493.1	115,626.1
ii).Administrative and other expenses	133,259.2	186,227.4	111,071.5	109,330.5	129,998.2
5.Salaries, wages and employee benefits	-	30.4	122,521.3	144,016.3	179,936.8
6.Financial expenses	55,508.4	82,255.8	127,617.1	107,574.1	141,658.4
of which: Interest expenses	-	1.9	97,102.7	87,536.5	121,860.5
7.Net profit before tax	140,859.9	101,910.2	106,936.6	162,939.6	230,958.1
8.Tax provision (current year)	32,990.6	52,453.3	44,827.2	56,779.2	79,071.5
9.Total amount of dividend	49,838.1	46,261.7	70,594.2	86,733.2	100,999.4
10.Total value of bonus shares issued	2,252.8	3,942.0	6,048.1	15,596.1	6,622.6
11.Cash flows from operations	-	14.7	235,536.3	208,607.5	184,472.7
G.Miscellaneous					
1.Total capital employed (E+D)	1,081,680.9	1,154,576.2	1,664,766.4	1,799,976.9	2,036,494.3
2.Total fixed liabilities (D1+D3)	31,384.0	37,342.4	412,245.0	372,013.1	465,841.8
3.Retention in business (F7-F8-F9)	58,031.3	3,195.3	(8,484.8)	19,427.2	50,887.2
4.Contractual Liabilities (G2+C1)	280,567.6	398,960.1	794,423.8	793,037.6	984,549.2
H.Key Performance Indicators					
1.Acid test or quick ratio[(B1+B3+B4) to C]	0.6	0.6	0.6	0.5	0.5
2.Financial expenses as % of sales (F6 as % of F1)	2.6	2.8	3.6	5.3	3.5
3.Trade Debt as % of sales (B3 as % of F1)	6.0	8.2	10.3	13.2	16.1
4.Assets turnover ratio [F1 to (A+B)]	1.2	1.1	1.0	0.9	1.1
5.Current ratio (B to C)	1.1	1.2	1.1	1.0	1.1
6.Cost of goods sold to sales (F2 as % of F1)	85.4	86.0	85.9	84.6	85.1
7.Debt equity ratio [(C+D) to E]	1.4	1.3	1.6	1.9	1.9
8.Return on assets [F7 as % of avg.(A+B)]	10.6	8.9	5.0	4.4	8.4
9.Return of equity (F7 as % of avg. E)	25.5	20.8	12.2	11.9	24.7
10.Return on capital employed (F7 as % of avg. G1)	18.4	15.5	9.1	7.6	14.5
11.Dividend cover ratio [(F7-F8) to F9]	2.1	2.2	1.1	0.9	1.7
12.Inventory Turnover Ratio (F1 to B2)	7.4	8.3	7.6	8.0	9.2
13.Interest cover ratio [(F7+ F6(i)) to F6(i)]	-	-	-	2.1	3.7
14.Net profit margin (F7 as % of F1)	8.4	7.2	4.5	4.4	7.4
15.Operating cash flow to debt ratio [F11 to (C+D)]	-	-	-	0.1	0.1
16.Earning per share after tax (Rs./share) [(F7-F8)/No. of Ord. shares]	5.3	3.5	1.5	1.6	4.3
17.Break-up value shares (Rs./share) (E/No. of Ord. shares)	28.6	26.8	25.7	24.9	28.6

7.6 Financial Statement Analysis of Non-Financial Sector

Public Overall

(Million Rupees)

ITEMS	2007	2008	2009	2010	2011
A.Non-Current Assets (A1+A3+A5+A6+A7)	268,736.7	312,338.0	466,862.8	474,149.8	529,775.1
1.Capital work in progress	-	-	36,778.4	38,538.9	39,971.5
2.Operating fixed assets at cost	389,856.0	449,119.0	521,493.0	536,889.8	601,709.3
3.Operating fixed assets after deducting accumulated depreciation	239,521.9	275,029.8	334,353.9	326,806.9	365,056.5
4.Depreciation for the year	19,843.6	22,066.0	26,924.3	25,977.5	30,409.5
5.Intangible assets	29,214.8	37,308.2	52,475.1	62,258.1	62,674.8
6.Long term investments	-	-	9,886.3	9,956.7	42,336.1
7.Other non-current assets	-	-	33,369.2	36,589.2	19,736.2
B.Current Assets (B1+B2+B3+B4+B5)	273,007.4	356,318.0	407,575.2	525,777.9	619,461.4
1.Cash & bank balance	29,105.2	27,780.4	18,187.9	21,671.6	26,274.0
2.Inventories	36,166.4	64,209.2	46,878.1	64,580.5	101,761.4
3.Trade Debt	88,972.8	133,608.1	232,431.8	327,714.0	330,609.3
4.Short term investments	39,461.6	40,068.6	18,849.8	29,904.2	22,242.9
5.Other current assets	79,301.4	90,651.6	91,227.5	81,907.5	138,573.7
C.Current Liabilities (C1+C2)	257,445.9	362,951.0	357,484.0	455,778.5	509,675.7
1.Short term Secured loans	45,079.7	58,486.2	48,726.0	46,652.9	71,173.9
2.Other current liabilities	212,366.2	304,464.9	308,758.0	409,125.6	438,501.8
D.Non-Current Liabilities (D1+D2+D3+D4+D5)	89,633.4	117,312.3	267,264.0	263,747.6	293,878.9
1.Long term secured loans	-	-	50,897.3	33,170.4	67,960.1
2.Long term unsecured loans	-	-	8,798.3	9,251.2	9,324.2
3.Debentures/TFCs	13,711.4	12,430.1	19,650.6	17,507.5	12,725.5
4.Employees benefit obligations	-	-	24,693.8	32,003.7	19,405.7
5.Other non-current liabilities	75,922.0	104,882.1	163,224.0	171,814.8	184,463.4
E.Shareholders Equity (E1+E2+E3)	194,664.7	188,392.7	249,690.0	280,401.6	345,681.9
1.Issued, Subscribed & Paid up capital	86,495.4	87,783.3	90,463.7	94,618.0	101,292.3
i).Ordinary Shares	86,495.4	87,783.3	90,456.2	94,610.5	101,284.8
ii).Preference shares	-	-	7.5	7.5	7.5
2.Reserves	108,169.3	100,609.4	114,939.6	159,139.3	205,726.4
i).Capital Reserve	-	-	8,147.4	8,203.1	8,510.9
ii).Revenue Reserve	-	-	106,792.1	150,936.2	197,215.5
3.Surplus on revaluation of fixed assets	-	-	44,286.7	26,644.4	38,663.2
F.Operation:					
1.Sales	885,995.1	1,095,189.1	1,193,180.4	1,338,664.0	1,490,730.4
i).Local sales (Net)	885,995.1	1,095,187.5	1,193,180.4	1,338,664.0	1,490,730.4
ii).Export Sales (Net)	-	1.6	-	-	-
2.Cost of sales	752,482.9	917,453.1	1,032,542.7	1,144,739.0	1,292,574.8
i).Cost of material	-	-	189,341.1	195,824.5	226,081.8
ii).Other input cost	-	-	843,201.6	948,914.6	1,066,493.0
3.Gross Profit	133,512.2	177,735.9	160,637.6	193,925.0	198,155.6
4.General, administrative and other expenses	52,118.9	83,927.7	60,266.7	54,381.5	63,005.8
i).Selling & distribution expenses	-	-	12,857.1	13,171.7	16,603.6
ii).Administrative and other expenses	52,118.9	83,927.7	47,409.7	41,209.8	46,402.2
5.Salaries, wages and employee benefits	-	-	39,705.9	51,470.1	49,539.1
6.Financial expenses	11,619.0	13,680.7	22,072.8	30,654.5	34,036.2
of which: Interest expenses	-	-	14,791.9	13,530.7	13,462.5
7.Net profit before tax	88,438.4	100,967.3	104,629.4	146,556.9	139,064.7
8.Tax provision (current year)	27,637.7	39,541.9	32,802.8	40,556.1	49,002.7
9.Total amount of dividend	47,751.8	59,932.5	47,703.3	36,861.3	42,759.2
10.Total value of bonus shares issued	743.0	823.0	1,659.7	3,669.6	1,889.0
11.Cash flows from operations	-	-	74,197.9	124,706.2	103,893.1
G.Miscellaneous					
1.Total capital employed (E+D)	284,298.2	305,705.0	516,953.9	544,149.2	639,560.8
2.Total fixed liabilities (D1+D3)	13,711.4	12,430.1	70,547.8	50,677.9	80,685.7
3.Retention in business (F7-F8-F9)	13,048.9	1,492.9	24,123.2	69,139.5	47,302.9
4.Contractual Liabilities (G2+C1)	58,791.1	70,916.3	119,273.8	97,330.7	151,859.6
H.Key Performance Indicators					
1.Acid test or quick ratio[(B1+B3+B4) to C]	0.8	0.6	0.6	0.8	0.5
2.Financial expenses as % of sales (F6 as % of F1)	1.0	1.3	1.3	1.9	3.5
3.Trade Debt as % of sales (B3 as % of F1)	10.3	10.0	12.2	19.5	16.1
4.Assets turnover ratio [F1 to (A+B)]	1.4	1.6	1.6	1.4	1.1
5.Current ratio (B to C)	1.2	1.1	1.0	1.1	1.1
6.Cost of goods sold to sales (F2 as % of F1)	82.8	84.9	83.8	86.5	85.1
7.Debt equity ratio [(C+D) to E]	1.2	1.8	2.6	2.5	1.9
8.Return on assets [F7 as % of avg.(A+B)]	20.5	15.2	16.7	13.6	8.4
9.Return of equity (F7 as % of avg. E)	43.0	40.8	52.7	47.8	24.7
10.Return on capital employed (F7 as % of avg. G1)	35.3	29.3	34.2	25.4	14.5
11.Dividend cover ratio [(F7-F8) to F9]	1.5	1.3	1.0	1.5	1.7
12.Inventory Turnover Ratio (F1 to B2)	27.2	24.5	17.1	25.5	9.2
13.Interest cover ratio [(F7+ F6(i)) to F6(i)]	-	-	-	8.1	3.7
14.Net profit margin (F7 as % of F1)	12.1	10.0	9.2	8.8	7.4
15.Operating cash flow to debt ratio [F11 to (C+D)]	-	-	-	0.1	0.1
16.Earning per share after tax (Rs./share) [(F7-F8)/No. of Ord. shares]	3.3	7.0	7.0	7.9	4.3
17.Break-up value shares (Rs./share) (E/No. of Ord. shares)	14.3	22.5	21.5	27.6	28.6