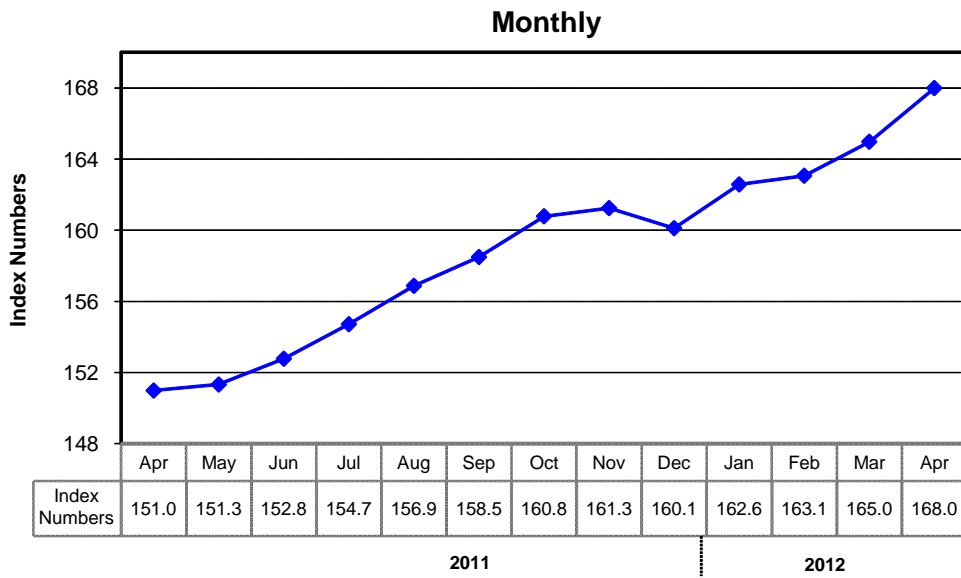
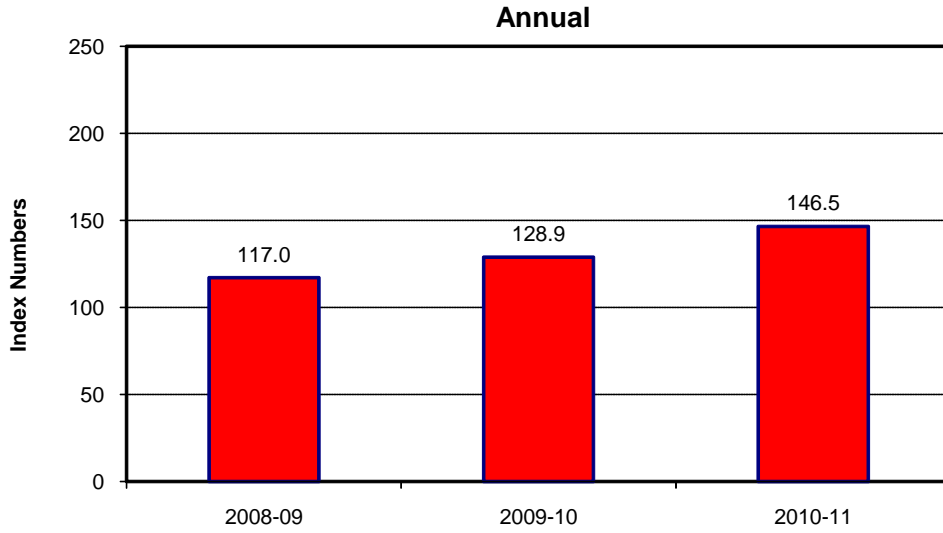


8.1 Combined Consumer Price Index Numbers By Commodity Groups - All Urban (2007-08=100)

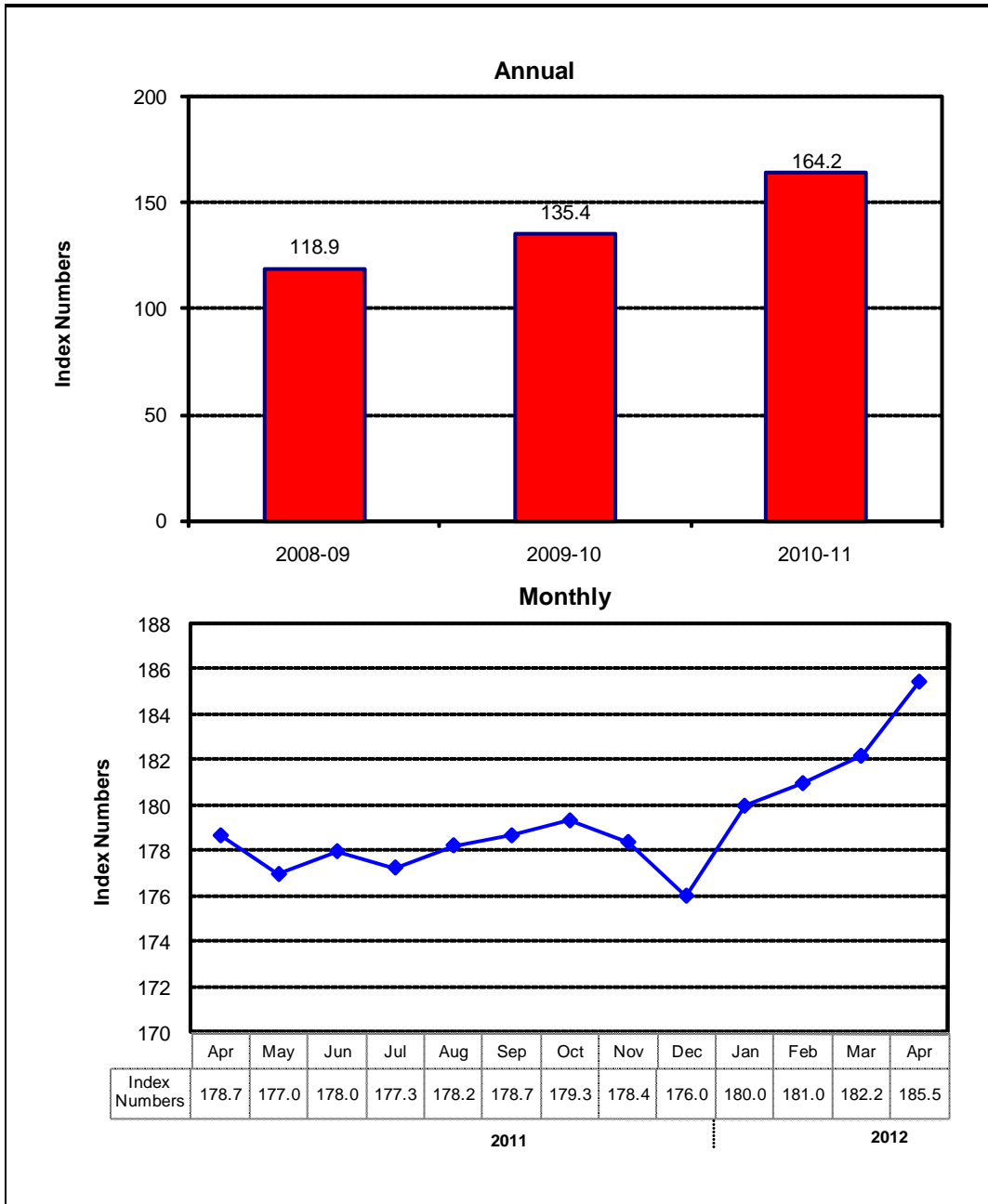
YEAR / MONTH	General	Food And Non- Alcoholic Beverages	Alcoholic Beverages and Tobacco	Clothing and Footwear	Housing Water, Elec, Gas and other Fuels	Furnishing & Household Equip. Mai- ntance etc	Health	Transport	Communi- cation	Recre- ation and Culture	Educac- ion	Resta- urants And Hotels	Misc.
2008-09	117.03	123.48	113.64	111.74	112.01	115.97	108.03	125.15	105.59	114.27	108.15	123.53	117.65
2009-10	128.85	139.10	136.71	119.19	122.14	123.89	114.32	132.79	109.65	127.87	119.39	140.36	133.63
2010-11	146.45	164.61	151.64	133.32	135.27	135.59	123.79	149.01	122.47	134.62	128.17	164.04	152.45
2011													
Apr.	150.99	169.83	151.54	140.04	138.15	140.28	127.13	155.73	123.14	136.53	134.06	173.04	160.35
May.	151.33	169.26	151.57	140.69	138.27	141.13	128.55	158.71	123.74	137.72	134.85	174.47	163.19
Jun.	152.78	170.14	158.40	142.15	138.47	141.67	129.03	168.11	123.70	138.45	136.56	175.62	165.45
Jul.	154.72	175.28	160.33	143.03	140.08	144.82	129.63	158.64	123.45	138.85	138.92	177.90	165.50
Aug.	156.88	177.95	160.77	144.70	141.65	148.31	131.80	161.69	123.34	139.07	139.75	178.46	172.21
Sep.	158.50	180.91	161.56	146.68	141.80	149.49	133.64	162.97	123.33	139.53	140.24	180.17	177.73
Oct.	160.79	184.02	161.57	148.92	143.95	154.18	135.22	165.39	123.37	140.30	140.35	180.73	176.45
Nov.	161.25	184.17	161.67	150.36	144.03	157.52	135.85	165.16	123.19	140.74	140.91	182.32	179.71
Dec.	160.12	179.79	161.68	151.61	144.16	160.35	137.16	166.18	123.10	141.43	140.80	182.94	180.79
2012													
Jan.	162.58	182.60	161.68	153.60	147.43	162.82	138.53	168.41	122.32	141.98	141.09	185.23	182.60
Feb.	163.07	181.19	161.27	154.19	147.59	165.48	139.60	174.98	122.34	143.03	143.82	188.82	186.70
Mar.	164.98	183.98	163.53	159.35	147.65	166.88	141.00	178.37	122.42	144.41	145.10	191.63	188.59
Apr.	168.00	188.00	168.74	161.68	149.07	168.78	141.74	185.94	122.36	146.51	151.36	192.76	188.70

Source : Pakistan Bureau of Statistics

Index Numbers of Consumer Prices (2007-08=100)



Index Numbers of Wholesale Prices (2007-08=100)



8.2 Index Numbers of Wholesale Prices by Commodity Groups (2007-08=100)

YEAR / MONTH		General	Agriculture Forestry & Fishery Products	Ores & Minerals, Electricity Gas & Water	Food Products, Beverages and Tobacco, Textiles, Apparel and Leather Products	Other Transportable Goods except Metal Products, Machinery and Equipments	Metal Product Machinery & Equipment
2008-09		118.93	119.10	125.31	114.57	125.21	109.07
2009-10		135.40	142.02	139.76	135.02	135.41	111.10
2010-11		164.17	183.20	159.13	166.49	155.85	128.10
2011	Apr.	178.69	200.14	162.00	181.25	175.89	136.30
	May	176.97	189.83	162.41	177.44	182.34	143.65
	Jun.	177.98	192.88	161.94	177.71	182.86	144.53
	Jul.	177.26	189.78	162.42	178.83	180.83	145.93
	Aug.	178.24	189.98	170.01	176.26	184.17	146.74
	Sep.	178.68	190.20	170.24	176.66	184.43	148.70
	Oct.	179.34	189.95	170.17	177.12	186.58	150.03
	Nov.	178.39	184.98	170.09	175.63	189.50	151.66
	Dec.	176.01	178.32	170.51	170.36	192.97	153.46
2012	Jan.	179.99	180.98	185.61	172.47	196.36	154.15
	Feb.	180.99	179.07	187.55	173.34	200.50	154.87
	Mar.	182.20	178.44	188.10	174.81	204.15	155.23
	Apr.	185.48	183.68	188.10	177.32	208.92	156.18

Source : Pakistan Bureau of Statistics

8.3 Combined Sensitive Price Indicator (SPI) by Income Groups (2007-08 =100)

YEAR / MONTH	INCOME GROUP					Combined	
	Group-I	Group-II	Group-III	Group-IV	Group-V		
	Up to Rs.8000	Rs.8001 to Rs.12000	Rs.12001 To Rs.18000	Rs.18001 to Rs.35000	Above Rs.35000		
2008-09	121.14	121.78	123.32	123.28	125.65	123.26	
2009-10	136.82	138.05	140.26	140.03	142.54	139.84	
2010-11	159.47	161.20	160.54	166.24	168.82	164.02	
2011	Apr.	162.72	164.73	164.18	169.84	172.99	167.83
	May	161.65	164.09	163.84	169.92	173.81	167.97
	Jun.	161.52	163.96	163.87	170.14	174.02	168.09
	Jul.	165.36	168.05	167.88	173.57	176.75	171.45
	Aug.	166.74	169.69	169.41	176.29	180.11	173.86
	Sep.	168.98	171.50	170.93	177.44	180.75	175.02
	Oct.	170.27	172.72	172.23	178.81	182.35	176.45
	Nov.	171.53	173.93	173.42	179.94	183.30	177.53
	Dec.	168.09	170.75	170.48	177.31	181.46	175.04
2012	Jan.	169.77	172.85	172.56	180.87	185.98	178.25
	Feb.	169.56	172.79	172.60	181.14	186.80	178.63
	Mar.	172.09	175.25	174.92	183.33	188.73	180.79
	Apr.	174.97	178.27	178.05	186.59	192.12	184.03

Note: SPI figures revised as it is computed on 53 items instead of 51 items.

Source : Pakistan Bureau of Statistics

8.4 Bullion Prices

(Rupees per 10 Grams)

YEAR / MONTH	Karachi	
	GOLD TEZABI	SILVER TEZABI
2006-07	12,619	228
2007-08	16,695	306
2008-09	22,195	329
2009-10	29,587	215
2010-11	37,658	776
2011		
Apr.	40,171	1,168
May	41,738	1,100
Jun.	42,326	1,034
Jul.	43,299	1,026
Aug.	49,366	1,097
Sep.	51,023	1,080
Oct.	47,438	935
Nov.	48,506	927
Dec.	47,839	884
2012		
Jan.	48,240	876
Feb.	50,701	943
Mar.	49,754	945
Apr.	48,811	901

Figures are monthly / yearly averages

Source: Daily Dawn