

## 8.1 Combined Consumer Price Index Numbers

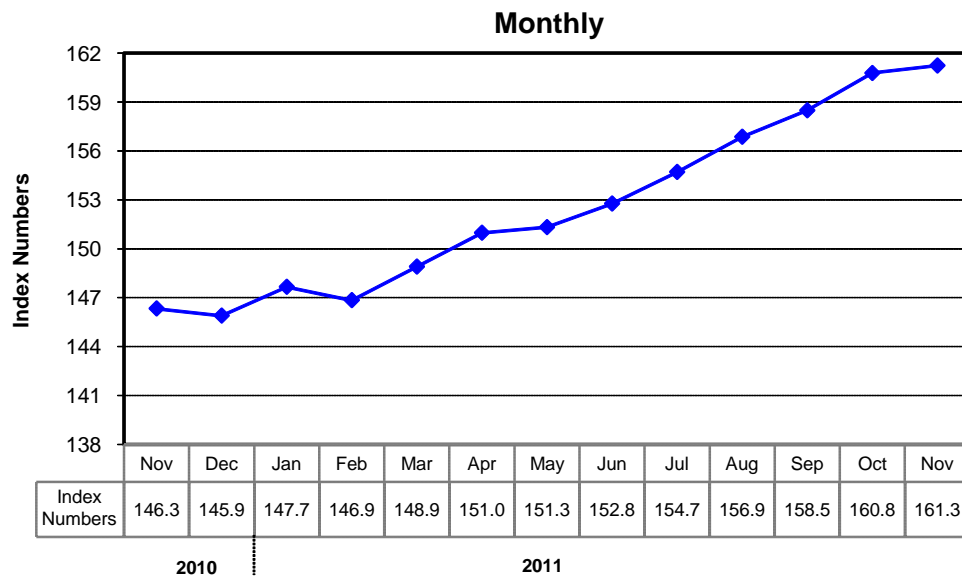
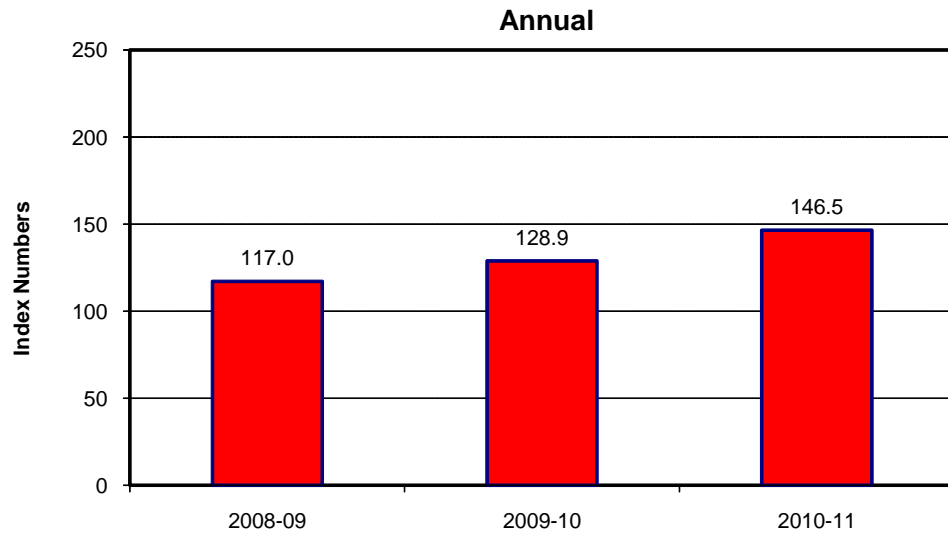
### By Commodity Groups - All Urban

(2007-08=100)

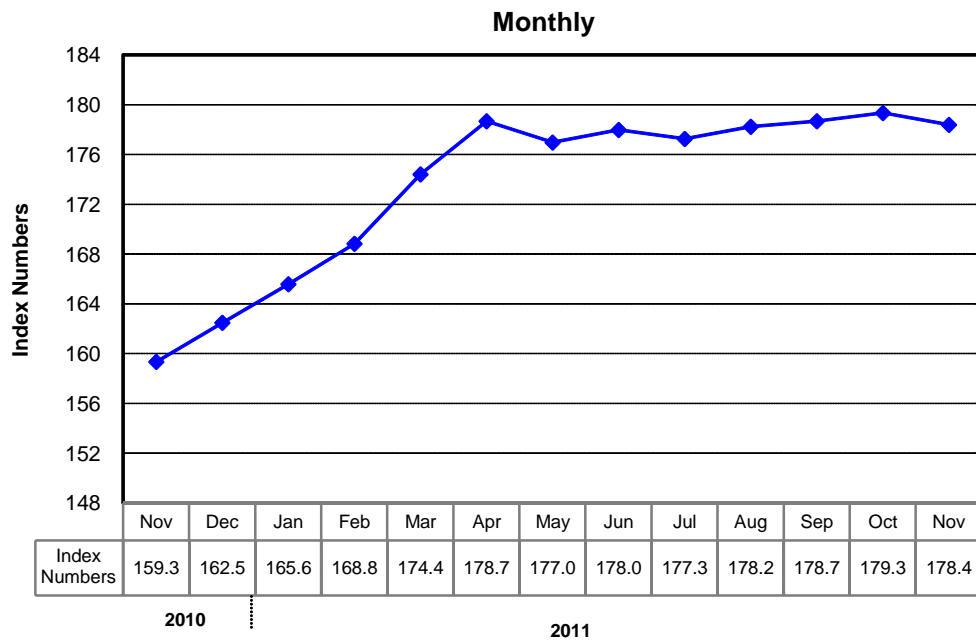
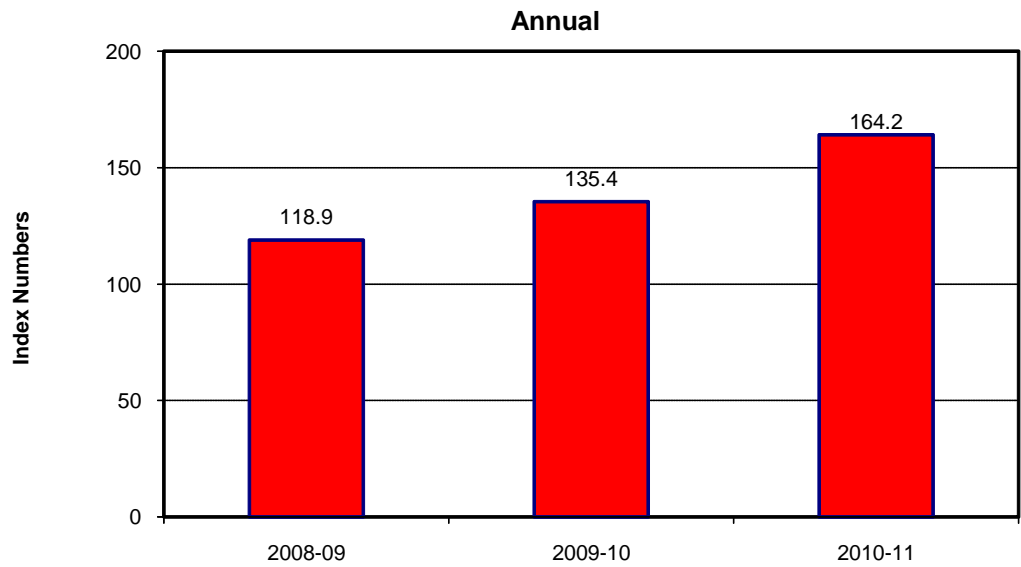
YEAR / MONTH		General	Food	Alcoholic		Housing	Furnishing				Recre-	Educ-	Resta-	
			And Non-	Beverages	Clothing	Water, Elec,	& Household				ation	-	urants	
			Alcoholic	and	and	Gas and	Equip. Mai-	Helath	Transport	Comm-	and	ion	And	Misc.
			Beverages	Tobacco	Footwear	other Fuels	tance etc			nication	Culture		Hotels	
2008-09		117.03	123.48	113.64	111.74	112.01	115.97	108.03	125.15	105.59	114.27	108.15	123.53	117.65
2009-10		128.85	139.10	136.71	119.19	122.14	123.89	114.32	132.79	109.65	127.87	119.39	140.36	133.63
2010-11		146.45	164.61	151.64	133.32	135.27	135.59	123.79	149.01	122.47	134.62	128.17	164.04	152.45
2010	Nov.	146.34	167.40	151.30	130.71	134.11	133.44	122.77	145.95	122.17	133.86	125.90	161.18	150.45
	Dec.	145.90	164.14	151.31	132.00	135.43	134.27	124.02	146.26	122.15	134.04	126.55	165.03	152.12
2011	Jan.	147.67	167.06	151.35	133.18	136.92	135.56	124.79	146.65	122.82	134.61	127.32	168.53	152.90
	Feb.	146.85	163.85	151.43	134.10	137.01	136.43	125.30	147.29	123.04	134.94	128.49	169.37	153.37
	Mar.	148.91	167.55	151.45	136.66	137.29	139.53	125.87	149.77	123.12	135.63	129.66	172.31	157.00
	Apr.	150.99	169.83	151.54	140.04	138.15	140.28	127.13	155.73	123.14	136.53	134.06	173.04	160.35
	May.	151.33	169.26	151.57	140.69	138.27	141.13	128.55	158.71	123.74	137.72	134.85	174.47	163.19
	Jun.	152.78	170.14	158.40	142.15	138.47	141.67	129.03	168.11	123.70	138.45	136.56	175.62	165.45
	Jul.	154.72	175.28	160.33	143.03	140.08	144.82	129.63	158.64	123.45	138.85	138.92	177.90	165.50
	Aug.	156.88	177.95	160.77	144.70	141.65	148.31	131.80	161.69	123.34	139.07	139.75	178.46	172.21
	Sep.	158.50	180.91	161.56	146.68	141.80	149.49	133.64	162.97	123.33	139.53	140.24	180.17	177.73
	Oct.	160.79	184.02	161.57	148.92	143.95	154.18	135.22	165.39	123.37	140.30	140.35	180.73	176.45
	Nov.	161.25	184.17	161.67	150.36	144.03	157.52	135.85	165.16	123.19	140.74	140.91	182.32	179.71

Source : Federal Bureau of Statistics

## Index Numbers of Consumer Prices (2007- 08=100)



**(2007- 08=100)**



## 8.2 Index Numbers of Wholesale Prices by Commodity Groups (2007-08=100 )

YEAR / MONTH		General	Agriculture Forestry & Fishery Products	Ores & Minerals, Electricity Gas & Water	Food Products, Beverages and Tobacco, Textiles, Apparel and Leather Products	Other Transportable Goods except Metal Products, Machinery and Equipments	Metal Product Machinery & Equipment
2008-09		<b>118.93</b>	119.10	125.31	114.57	125.21	109.07
2009-10		<b>135.40</b>	142.02	139.76	135.02	135.41	111.10
2010-11		<b>164.17</b>	183.20	159.13	166.49	155.85	128.10
2010	Nov.	<b>159.34</b>	179.17	155.70	162.98	146.98	124.50
	Dec.	<b>162.48</b>	183.81	160.78	165.42	148.69	126.70
2011	Jan.	<b>165.58</b>	188.37	161.43	169.07	151.59	127.33
	Feb.	<b>168.83</b>	191.81	161.45	172.93	156.12	129.01
	Mar.	<b>174.41</b>	198.54	161.88	179.46	163.18	131.15
	Apr.	<b>178.68</b>	200.16	162.00	181.25	176.89	136.30
	May	<b>176.97</b>	189.83	162.41	177.44	182.34	143.65
	Jun.	<b>177.98</b>	192.88	161.94	177.71	182.86	144.53
	Jul.	<b>177.26</b>	189.78	178.83	162.42	180.83	145.93
	Aug.	<b>178.24</b>	189.98	176.26	170.01	184.17	146.74
	Sep.	<b>178.68</b>	190.20	170.24	176.66	184.43	148.70
	Oct.	<b>179.34</b>	189.95	170.17	177.12	186.58	150.03
	Nov.	<b>178.39</b>	184.98	170.09	175.63	189.50	151.66

Source : Federal Bureau of Statistics

### 8.3 Combined Sensitive Price Indicator (SPI) by Income Groups (2007-08 =100)

YEAR / MONTH		INCOME GROUP					Combined
		Group-I	Group-II	Group-III	Group-IV	Group-V	
		Up to Rs.8000	Rs.8001 to Rs.12000	Rs.12001 To Rs.18000	Rs.18001 to Rs.35000	Above Rs.35000	
2008-09		121.14	121.78	123.32	123.28	125.65	<b>123.26</b>
2009-10		136.82	138.05	140.26	140.03	142.54	<b>139.84</b>
2010-11		159.47	161.20	160.54	166.26	168.82	<b>164.02</b>
2010	Nov.	165.30	166.21	164.91	170.01	171.04	<b>167.56</b>
	Dec.	163.20	164.40	163.47	168.89	170.68	<b>166.52</b>
2011	Jan.	163.32	164.62	163.77	169.30	171.29	<b>166.95</b>
	Feb.	161.15	162.54	161.70	167.29	169.47	<b>164.99</b>
	Mar.	162.20	164.09	163.45	168.93	171.55	<b>166.80</b>
	Apr.	162.72	164.72	164.18	169.84	172.98	<b>167.83</b>
	May	161.65	164.09	163.84	169.92	173.81	<b>167.97</b>
	Jun.	161.52	163.96	163.87	170.14	174.02	<b>168.09</b>
	Jul.	165.36	168.05	167.88	173.57	176.75	<b>171.45</b>
	Aug.	166.73	169.69	169.41	176.28	180.10	<b>173.84</b>
	Sep.	168.98	171.50	170.93	177.44	180.75	<b>175.02</b>
	Oct.	170.28	172.72	172.24	178.82	182.35	<b>176.45</b>
	Nov.	171.53	173.93	173.42	179.94	183.30	<b>177.53</b>

Note: SPI figures revised as it is computed on 53 items instead of 51 items.

Source : Federal Bureau of Statistics

## 8.4 Bullion Prices

			(Rupees per 10 Grams)	
YEAR / MONTH			Karachi	
			GOLD TEZABI	SILVER TEZABI
2006-07			12,619	228
2007-08			16,695	306
2008-09			22,195	329
2009-10			29,587	215
2010-11			37,658	776
2010	Nov.		37,671	677
	Dec.		37,026	776
2011	Jan.		38,168	806
	Feb.		37,885	805
	Mar.		39,017	892
	Apr.		40,171	1,168
	May		41,738	1,100
	Jun.		42,326	1,034
	Jul.		43,299	1,026
	Aug.		49,366	1,097
	Sep.		51,023	1,080
	Oct.		47,438	935
	Nov.		48,506	927

Figures are monthly / yearly averages

Source: Daily Dawn