

8.1 Combined Consumer Price Index Numbers

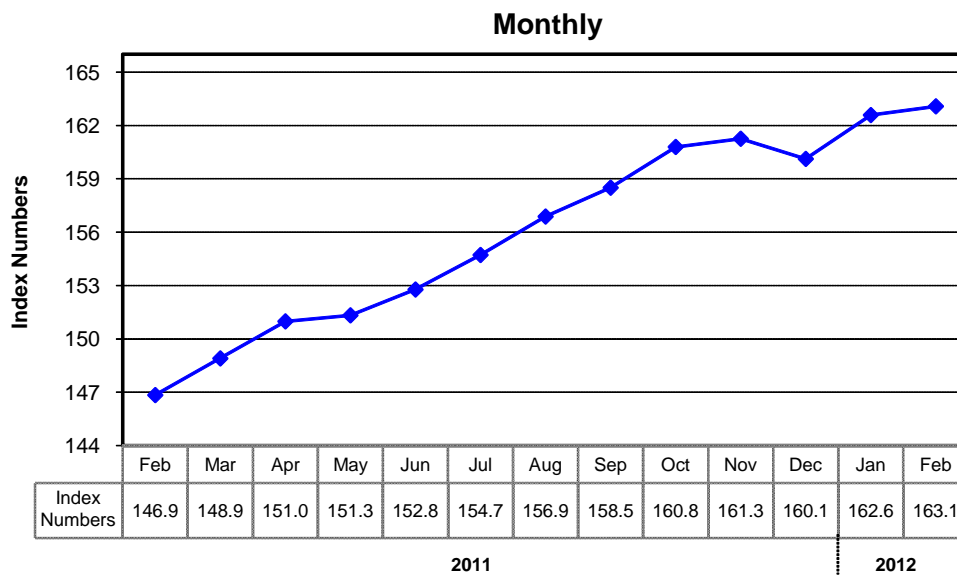
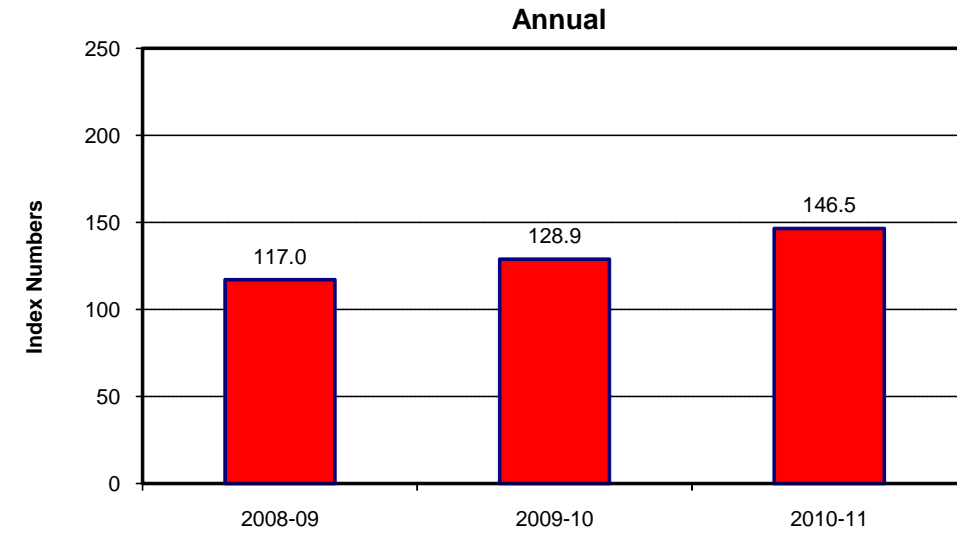
By Commodity Groups - All Urban

(2007-08=100)

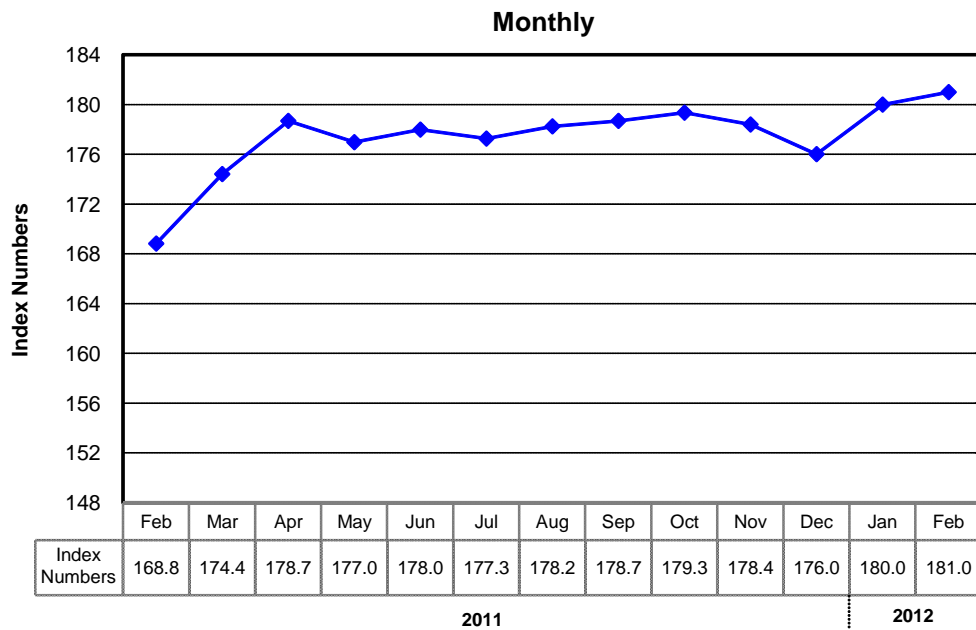
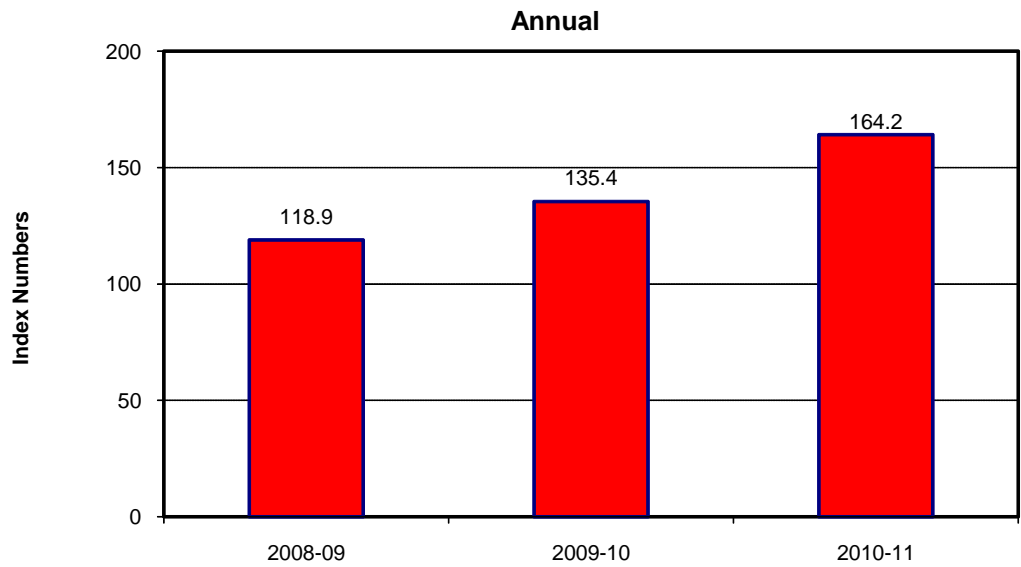
YEAR / MONTH		General	Food And Non-Alcoholic Beverages	Alcoholic Beverages and Tobacco	Clothing and Footwear	Housing Water, Elec, Gas and other Fuels	Furnishing & Household Equip. Maintenance etc	Health	Transport	Communication	Recreation and Culture	Education	Restaurants And Hotels	Misc.
2008-09		117.03	123.48	113.64	111.74	112.01	115.97	108.03	125.15	105.59	114.27	108.15	123.53	117.65
2009-10		128.85	139.10	136.71	119.19	122.14	123.89	114.32	132.79	109.65	127.87	119.39	140.36	133.63
2010-11		146.45	164.61	151.64	133.32	135.27	135.59	123.79	149.01	122.47	134.62	128.17	164.04	152.45
2011	Feb.	146.85	163.85	151.43	134.10	137.01	136.43	125.30	147.29	123.04	134.94	128.49	169.37	153.37
	Mar.	148.91	167.55	151.45	136.66	137.29	139.53	125.87	149.77	123.12	135.63	129.66	172.31	157.00
	Apr.	150.99	169.83	151.54	140.04	138.15	140.28	127.13	155.73	123.14	136.53	134.06	173.04	160.35
	May.	151.33	169.26	151.57	140.69	138.27	141.13	128.55	158.71	123.74	137.72	134.85	174.47	163.19
	Jun.	152.78	170.14	158.40	142.15	138.47	141.67	129.03	168.11	123.70	138.45	136.56	175.62	165.45
	Jul.	154.72	175.28	160.33	143.03	140.08	144.82	129.63	158.64	123.45	138.85	138.92	177.90	165.50
	Aug.	156.88	177.95	160.77	144.70	141.65	148.31	131.80	161.69	123.34	139.07	139.75	178.46	172.21
	Sep.	158.50	180.91	161.56	146.68	141.80	149.49	133.64	162.97	123.33	139.53	140.24	180.17	177.73
	Oct.	160.79	184.02	161.57	148.92	143.95	154.18	135.22	165.39	123.37	140.30	140.35	180.73	176.45
	Nov.	161.25	184.17	161.67	150.36	144.03	157.52	135.85	165.16	123.19	140.74	140.91	182.32	179.71
	Dec.	160.12	179.79	161.68	151.61	144.16	160.35	137.16	166.18	123.10	141.43	140.80	182.94	180.79
2012	Jan.	162.58	182.60	161.68	153.60	147.43	162.82	138.53	168.41	122.32	141.98	141.09	185.23	182.60
	Feb.	163.07	181.19	161.27	154.19	147.59	165.48	139.60	174.98	122.34	143.03	143.82	188.82	186.70

Source : Pakistan Bureau of Statistics

Index Numbers of Consumer Prices (2007- 08=100)



Index Numbers of Wholesale Prices (2007- 08=100)



8.2 Index Numbers of Wholesale Prices by Commodity Groups (2007-08=100)

YEAR / MONTH		General	Agriculture Forestry & Fishery Products	Ores & Minerals, Electricity Gas & Water	Food Products, Beverages and Tobacco, Textiles, Apparel and Leather Products	Other Transportable Goods except Metal Products, Machinery and Equipments	Metal Product Machinery & Equipment
2008-09		118.93	119.10	125.31	114.57	125.21	109.07
2009-10		135.40	142.02	139.76	135.02	135.41	111.10
2010-11		164.17	183.20	159.13	166.49	155.85	128.10
2011	Feb.	168.83	191.81	161.45	172.93	156.12	129.01
	Mar.	174.41	198.54	161.88	179.46	163.18	131.15
	Apr.	178.68	200.16	162.00	181.25	176.89	136.30
	May	176.97	189.83	162.41	177.44	182.34	143.65
	Jun.	177.98	192.88	161.94	177.71	182.86	144.53
	Jul.	177.26	189.78	162.42	178.83	180.83	145.93
	Aug.	178.24	189.98	170.01	176.26	184.17	146.74
	Sep.	178.68	190.20	170.24	176.66	184.43	148.70
	Oct.	179.34	189.95	170.17	177.12	186.58	150.03
	Nov.	178.39	184.98	170.09	175.63	189.50	151.66
	Dec.	176.01	178.32	170.51	170.36	192.97	153.46
	Jan.	179.99	180.98	185.61	172.47	196.36	154.15
2012	Feb.	180.99	179.07	187.55	173.34	200.50	154.87

Source : Pakistan Bureau of Statistics

8.3 Combined Sensitive Price Indicator (SPI) by Income Groups (2007-08 =100)

YEAR / MONTH		INCOME GROUP					Combined
		Group-I	Group-II	Group-III	Group-IV	Group-V	
		Up to Rs.8000	Rs.8001 to Rs.12000	Rs.12001 To Rs.18000	Rs.18001 to Rs.35000	Above Rs.35000	
2008-09		121.14	121.78	123.32	123.28	125.65	123.26
2009-10		136.82	138.05	140.26	140.03	142.54	139.84
2010-11		159.47	161.20	160.54	166.24	168.82	164.02
2011	Feb.	161.15	162.54	161.70	167.29	169.47	164.99
	Mar.	162.20	164.09	163.45	168.93	171.55	166.80
	Apr.	162.72	164.72	164.18	169.84	172.98	167.83
	May	161.65	164.09	163.84	169.92	173.81	167.97
	Jun.	161.52	163.96	163.87	170.14	174.02	168.09
	Jul.	165.36	168.05	167.88	173.57	176.75	171.45
	Aug.	166.74	169.69	169.41	176.29	180.11	173.86
	Sep.	168.98	171.50	170.93	177.44	180.75	175.02
	Oct.	170.27	172.72	172.23	178.81	182.35	176.45
	Nov.	171.53	173.93	173.42	179.94	183.30	177.53
	Dec.	168.09	170.75	170.48	177.31	181.46	175.04
2012	Jan.	169.77	172.85	172.56	180.87	185.98	178.25
	Feb.	169.56	172.79	172.60	181.14	186.80	178.63

Note: SPI figures revised as it is computed on 53 items instead of 51 items.

Source : Pakistan Bureau of Statistics

8.4 Bullion Prices

			(Rupees per 10 Grams)	
YEAR / MONTH			Karachi	
			GOLD TEZABI	SILVER TEZABI
2006-07			12,619	228
2007-08			16,695	306
2008-09			22,195	329
2009-10			29,587	215
2010-11			37,658	776
2011	Feb.		37,885	805
	Mar.		39,017	892
	Apr.		40,171	1,168
	May		41,738	1,100
	Jun.		42,326	1,034
	Jul.		43,299	1,026
	Aug.		49,366	1,097
	Sep.		51,023	1,080
	Oct.		47,438	935
	Nov.		48,506	927
	Dec.		47,839	884
2012	Jan.		48,240	876
	Feb.		50,701	943

Figures are monthly / yearly averages

Source: Daily Dawn