

8.1 Combined Consumer Price Index Numbers

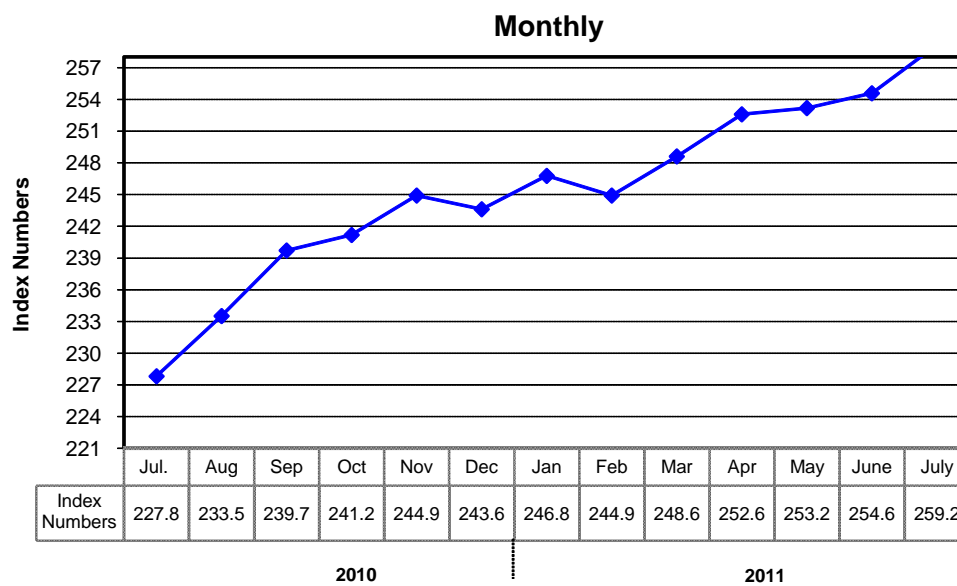
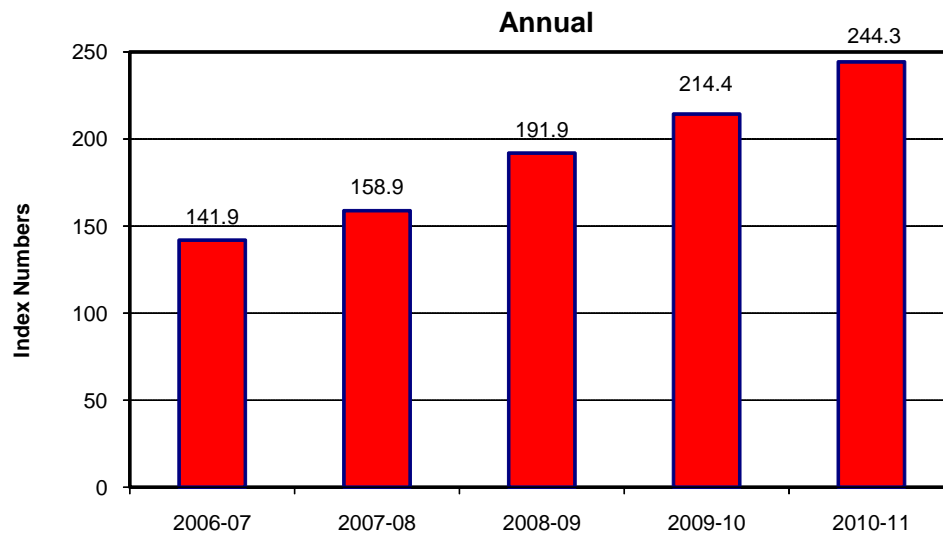
By Commodity Groups - All Urban

(2000-01=100)

YEAR / MONTH	General	Food and Beverages	Apparel Textile and Footwear	House Rent	Fuel and Lighting	Household Furniture and Equipment	Transport and Communi- cation	Recreation & Entertai- nment	Education	Cleaning, Laundry and Personal Appearance	Medicare
2006-07	141.87	148.21	123.70	141.21	149.43	131.64	148.96	105.76	133.82	124.53	120.91
2007-08	158.90	174.36	133.79	154.47	158.48	141.08	155.55	107.86	140.88	138.28	132.23
2008-09	191.90	215.69	152.82	180.90	198.92	159.58	192.55	120.00	165.27	163.17	147.25
2009-10	214.41	242.59	162.47	205.88	226.90	169.76	204.15	127.09	185.74	180.52	157.02
2010-11	244.26	286.15	181.97	220.90	261.67	187.04	233.52	139.63	197.14	203.16	180.67
2010 Jul.	227.79	258.19	173.11	213.98	251.82	177.79	221.99	139.12	193.61	190.23	167.20
Aug.	233.50	271.35	173.92	215.05	252.08	179.47	222.20	139.25	193.66	190.23	167.69
Sep.	239.69	285.63	175.04	215.77	252.69	180.62	222.01	139.25	193.70	191.61	169.67
Oct.	241.17	285.89	176.54	216.73	256.98	182.40	227.96	139.28	194.24	195.47	170.04
Nov.	244.84	292.20	178.08	217.91	259.06	184.47	228.79	139.45	194.75	200.02	178.98
Dec.	243.60	286.64	179.84	219.32	263.60	185.96	229.20	139.56	194.79	201.77	181.45
2011 Jan.	246.76	292.52	181.46	220.82	265.58	187.75	229.49	139.61	195.46	202.36	183.71
Feb.	244.93	286.26	183.07	222.39	266.04	189.50	230.63	139.71	195.73	202.78	184.68
Mar.	248.55	292.03	185.96	224.01	265.98	191.75	234.58	139.80	195.83	209.13	185.11
Apr.	252.58	296.04	189.61	226.06	267.74	193.62	246.60	140.02	201.94	214.65	189.82
May.	253.17	292.73	193.07	228.29	269.88	195.48	254.81	140.22	204.28	218.00	194.27
Jun.	254.57	294.29	193.99	230.50	268.53	195.63	253.95	140.32	207.64	221.63	195.38
Jul.	259.15	303.58	195.82	232.78	270.48	198.34	252.20	141.77	207.68	222.60	196.19

Source : Federal Bureau of Statistics

(2000 - 01=100)



(2000- 01=100)



8.2 Index Numbers of Wholesale Prices by Commodity Groups (2000-01=100)

YEAR / MONTH		General	Food	Raw Materials	Fuel, Lighting and Lubricants	Manufactures	Building Materials
2006-07		146.18	145.67	138.85	184.10	119.91	151.93
2007-08		170.15	173.27	156.57	223.34	128.33	177.18
2008-09		201.10	213.54	184.45	258.96	140.67	213.00
2009-10		226.49	239.01	238.11	296.48	154.94	201.40
2010-11		279.30	285.93	374.44	348.19	197.39	226.61
2010	Jul.	246.48	256.40	299.80	309.51	172.38	216.33
	Aug.	252.93	267.12	302.27	317.83	173.16	214.88
	Sep.	258.22	279.03	309.74	313.03	175.40	215.35
	Oct.	266.19	283.96	327.07	325.57	182.66	219.69
	Nov.	275.46	290.52	356.30	332.06	193.44	222.70
	Dec.	278.38	286.07	386.42	335.15	200.05	224.13
2011	Jan.	282.96	291.06	402.36	338.54	201.97	225.32
	Feb.	288.24	289.24	434.70	349.84	206.86	225.57
	Mar.	297.86	294.48	458.34	366.57	215.17	228.81
	Apr.	304.58	296.72	450.47	390.47	220.30	238.63
	May	299.85	296.11	382.68	399.37	216.65	242.36
	Jun.	300.50	300.50	383.08	400.28	210.61	245.60
	Jul.	298.57	309.27	339.86	389.47	209.47	250.07

Source : Federal Bureau of Statistics

8.3 Combined Sensitive Price Indicator (SPI) by Income Groups (2000-01 =100)

YEAR / MONTH		INCOME GROUP				Combined
		Group-I	Group-II	Group-III	Group-IV	
		Up to Rs.3000	Rs.3001 to Rs.5000	Rs.5001 to Rs.12000	Above Rs.12000	
2006-07		151.34	150.44	149.97	152.32	149.29
2007-08		176.77	175.15	172.60	170.45	170.55
2008-09		218.16	216.02	213.77	208.87	209.29
2009-10		247.22	245.28	242.77	235.70	236.87
2010-11		292.16	288.90	285.08	276.78	278.96
2010	Jul.	264.02	262.34	260.53	254.77	255.13
	Aug.	271.58	269.75	267.49	260.62	261.70
	Sep.	283.30	280.91	277.62	267.95	270.75
	Oct.	289.49	286.80	282.84	271.45	275.31
	Nov.	300.46	296.90	291.97	279.89	284.33
	Dec.	298.53	294.87	290.30	279.19	282.83
2011	Jan.	299.92	296.26	291.71	281.37	284.47
	Feb.	296.54	292.83	288.54	278.71	281.56
	Mar.	298.89	295.07	290.89	282.64	284.83
	Apr.	300.53	296.53	292.15	286.07	287.28
	May	299.58	295.50	291.64	287.90	287.89
	Jun.	303.07	299.08	295.31	290.82	291.41
	Jul.	309.81	306.06	301.86	295.52	297.13

Note: SPI figures revised as it is computed on 53 items instead of 51 items.

Source : Federal Bureau of Statistics

8.4 Bullion Prices

			(Rupees per 10 Grams)	
YEAR / MONTH			Karachi	
			GOLD TEZABI	SILVER TEZABI
2006-07			12,619	228
2007-08			16,695	306
2008-09			22,195	329
2009-10			29,587	215
2010-11			37,658	776
2010	Jul.		33,150	478
	Aug.		33,087	482
	Sep.		34,692	519
	Oct.		36,968	579
	Nov.		37,671	677
	Dec.		37,026	776
2011	Jan.		38,168	806
	Feb.		37,885	805
	Mar.		39,017	892
	Apr.		40,171	1,168
	May		41,738	1,100
	Jun.		42,326	1,034
	Jul.		43,299	1,026

Figures are monthly / yearly averages

Source: Daily Dawn