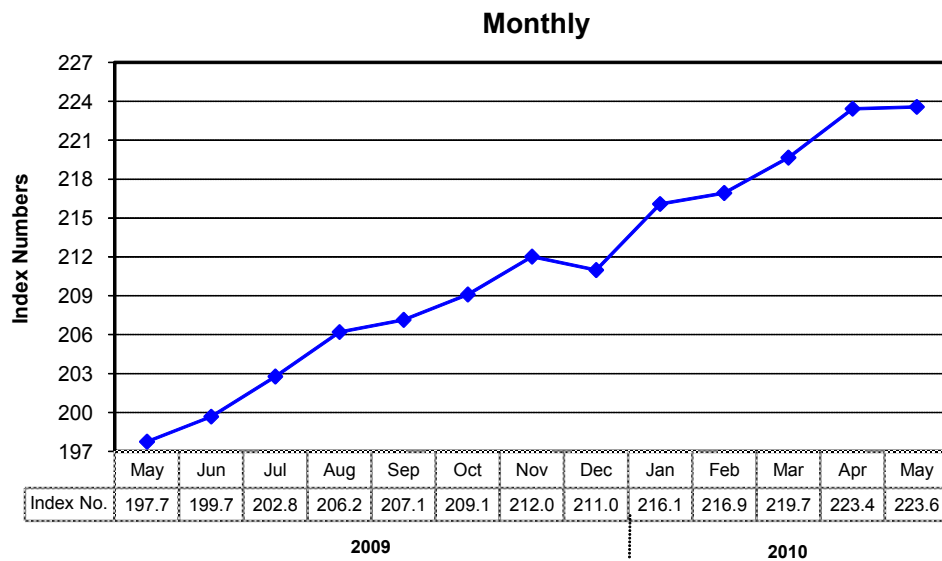
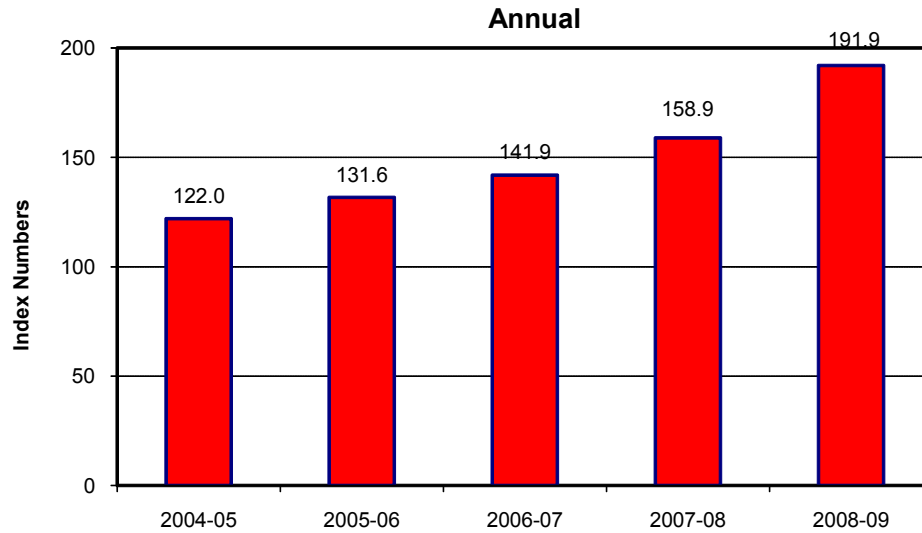


8.1 Combined Consumer Price Index Numbers by Commodity Groups - All Urban (2000-01=100)

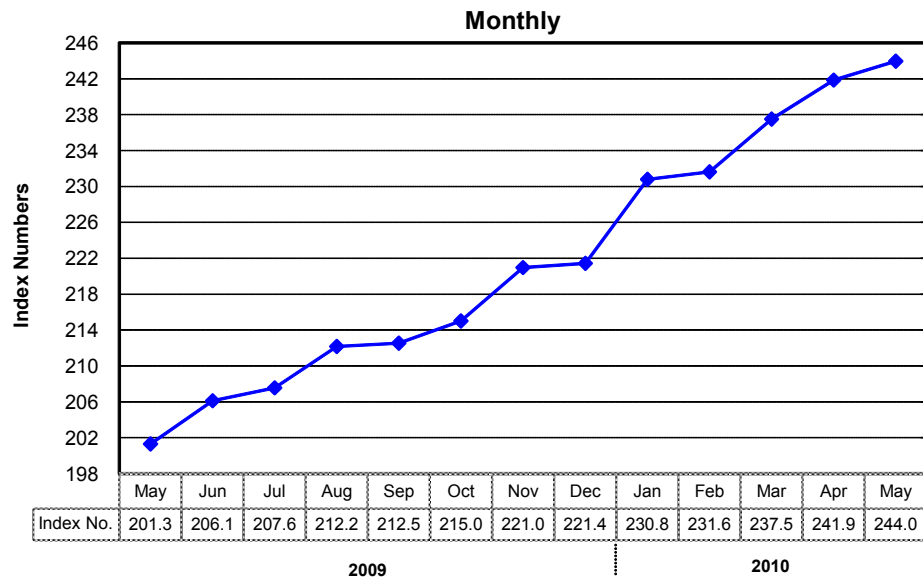
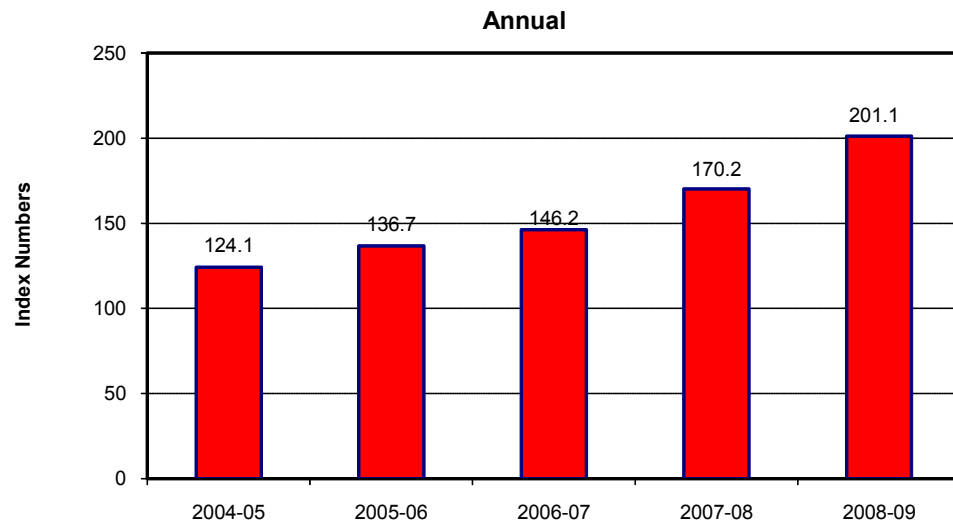
YEAR / MONTH		General	Food and Beverages	Apparel Textile and Footwear	House Rent	Fuel and Lighting	Household Furniture and Equipment	Transport and Communication	Recreation & Entertainment	Education	Cleaning, Laundry and Personal Appearance	Medicare
2004-05		121.98	125.69	112.98	120.42	125.77	117.34	125.11	105.93	117.55	115.90	107.94
2005-06		131.64	134.39	117.58	132.36	137.09	123.41	145.90	105.65	125.03	119.49	110.66
2006-07		141.87	148.21	123.70	141.21	149.43	131.64	148.96	105.76	133.82	124.53	120.91
2007-08		158.90	174.36	133.79	154.47	158.48	141.08	155.55	107.86	140.88	138.28	132.23
2008-09		191.90	215.69	152.82	1,784.53	198.92	159.58	192.55	120.00	165.27	163.17	147.25
2009	May	197.74	220.04	156.09	192.23	207.85	164.49	185.24	121.53	178.21	170.35	150.63
	Jun.	199.69	222.23	156.49	194.38	208.26	164.82	190.98	121.62	178.50	171.41	150.63
	Jul.	202.77	228.93	156.96	196.70	206.77	164.83	189.66	121.62	178.57	171.56	150.64
	Aug.	206.21	234.69	157.79	198.69	207.84	165.37	194.45	121.65	181.06	172.64	150.64
	Sep.	207.14	235.59	158.97	200.50	209.16	166.11	192.13	121.69	181.81	174.20	150.86
	Oct.	209.11	238.12	159.13	202.29	212.12	166.77	192.39	121.69	182.80	176.86	153.89
	Nov.	212.02	242.40	159.95	203.90	213.97	168.10	197.68	122.61	183.65	179.64	153.91
	Dec.	210.99	238.16	160.70	205.61	215.18	169.01	197.26	122.62	185.19	181.14	153.98
2010	Jan.	216.09	242.91	161.48	207.22	244.09	170.02	203.09	122.70	185.65	182.79	158.16
	Feb.	216.93	243.17	162.53	208.78	243.96	171.14	205.36	126.43	185.97	183.71	158.79
	Mar.	219.65	247.55	163.88	210.08	243.82	171.82	212.24	126.54	186.28	184.18	159.10
	Apr.	223.44	252.53	167.51	211.25	242.79	173.31	224.60	139.17	191.30	185.00	163.25
	May	223.58	252.62	169.75	212.37	240.78	174.72	219.79	139.17	193.18	186.02	164.47

Source : Federal Bureau of Statistics

Index Numbers of Consumer Prices (2000 - 01=100)



Index Numbers of Wholesale Prices (2000-01=100)



8.2 Index Numbers of Wholesale Prices by Commodity Groups (2000-01=100)

YEAR / MONTH		General	Food	Raw Materials	Fuel,Lighting and Lubricants	Manufactures	Building Materials
2004-05		124.14	125.03	110.44	138.01	113.05	143.79
2005-06		136.68	133.78	121.93	174.57	115.39	144.18
2006-07		146.18	145.67	138.85	184.10	119.91	151.93
2007-08		170.15	173.27	156.57	223.34	128.33	177.18
2008-09		201.10	213.54	184.45	258.96	140.67	213.00
2009	May	201.29	217.50	197.90	249.60	141.25	194.06
	Jun.	206.13	219.81	196.93	269.94	141.24	194.63
	Jul.	207.57	224.31	193.88	267.47	141.07	201.15
	Aug.	212.16	229.52	197.76	275.45	143.57	198.98
	Sep.	212.53	230.34	195.69	276.34	144.39	194.80
	Oct.	215.01	232.35	197.29	283.96	145.36	190.23
	Nov.	220.98	236.69	208.71	294.39	150.65	187.33
	Dec.	221.43	235.06	226.19	290.11	152.91	186.76
2010	Jan.	230.80	241.37	235.19	313.87	156.61	196.26
	Feb.	231.64	242.67	250.35	304.47	159.31	200.37
	Mar.	237.51	246.68	274.70	312.23	161.77	202.43
	Apr.	241.88	248.53	285.83	318.67	164.72	217.18
	May	243.98	248.81	295.35	316.79	170.15	221.07

Source : Federal Bureau of Statistics

8.3 Combined Sensitive Price Indicator (SPI) by Income Groups (2000-01 =100)

YEAR / MONTH		INCOME GROUP				
		Group-I	Group-II	Group-III	Group-IV	Combined
		Up to Rs.3000	Rs.3001 to Rs.5000	Rs.5001 to Rs.12000	Above Rs.12000	
2004-05		127.59	127.50	127.01	127.35	126.52
2005-06		136.56	136.15	135.99	139.80	136.43
2006-07		151.34	150.44	149.97	152.32	149.29
2007-08		176.77	175.15	172.60	170.45	170.55
2008-09		218.16	216.02	213.77	208.87	209.29
2009	May	222.94	221.20	218.79	211.21	212.62
	Jun.	225.54	223.81	221.44	213.19	215.09
	Jul.	231.80	230.03	227.71	220.42	222.00
	Aug.	235.70	233.79	231.24	222.78	225.18
	Sep.	237.02	235.14	232.80	225.77	227.34
	Oct.	237.86	236.09	233.60	225.56	227.73
	Nov.	243.79	241.74	238.44	229.13	232.14
	Dec.	245.40	242.66	238.85	230.46	232.81
2010	Jan.	252.46	250.81	247.78	239.00	240.25
	Feb.	253.87	251.97	249.06	241.94	242.37
	Mar.	255.84	254.02	251.47	244.42	244.98
	Apr.	256.94	255.08	253.00	247.23	247.50
	May	256.78	254.90	253.61	250.68	249.51

Note: SPI figures revised as it is computed on 53 items instead of 51 items.

Source : Federal Bureau of
Statistics

8.4 Bullion Prices

(Rupees per 10 Grams)

YEAR / MONTH		GOLD TEZABI		SILVER TEZABI	
		Karachi	Lahore	Karachi	Lahore
2004-05		8,216	8,238	118	138
2005-06		10,317	10,307	180	176
2006-07		12,619	12,603	228	231
2007-08		16,695	16,635	306	306
2008-09		22,195	22,176	329	330
2009	May	23,899	23,773	329	324
	Jun.	24,592	24,643	340	341
	Jul.	24,603	24,611	341	344
	Aug.	25,088	25,154	350	350
	Sep.	26,215	---	382	---
	Oct.	28,073	---	425	---
	Nov.	30,671	---	454	---
	Dec.	31,048	---	482	---
	Jan.	31,289	---	487	---
	Feb.	30,704	---	461	---
2010	Mar.	30,555	30,000	458	471
	Apr.	30,910	---	468	---
	May	32,346	---	475	---

Figures are monthly / yearly averages

Source: Daily Business Recorder