

2.1 Pakistan Monetary Survey (Depository Corporation Survey)

(Million Rupees)

Items	2008			
	Jun.	Jul.	Aug.	Sep.
Net Foreign Assets	798,657	731,891	679,876	628,683
Claims on nonresidents	1,134,936	1,083,297	1,045,715	1,009,905
less: Liabilities to nonresidents	336,279	351,406	365,839	381,222
Domestic claims (a+b)	4,670,595	4,693,709	4,831,831	4,931,819
a-Net Claims on general government (1+2)	1,472,918	1,551,344	1,635,117	1,589,503
1- Net claims on central government	1,641,335	1,718,643	1,819,861	1,764,848
Claims on central government	1,906,184	1,970,246	2,059,971	2,049,983
less: Liabilities to central government	264,850	251,603	240,110	285,135
2-Net claims on provincial governments	(168,416)	(167,298)	(184,744)	(175,345)
Claims on provincial governments	46,753	42,088	46,753	35,259
less: Liabilities to provincial governments	215,169	209,386	231,497	210,604
b-Claims on other sectors	3,197,677	3,142,364	3,196,714	3,342,316
Other financial corporations	114,454	105,184	114,047	108,087
Public non financial corporations	188,725	178,845	188,725	240,152
Other non financial corporations	2,161,487	2,137,160	2,161,617	2,278,442
Other resident sectors	733,012	721,176	732,325	715,636
Broad money liabilities (a+b+c+d)	4,537,886	4,429,337	4,560,921	4,519,105
a.Currency outside depository corporations	976,781	989,374	1,001,248	1,102,591
b.Transferable deposits	2,314,327	2,207,550	2,314,395	2,113,807
Other financial corporations	40,402	44,096	40,400	28,115
Public non financial corporations	142,629	112,479	142,629	115,638
Other non financial corporations	855,286	819,519	855,356	745,900
Other resident sectors	1,276,011	1,231,456	1,276,011	1,224,154
less: Central bank float	-	-	-	-
c.Other Deposits	1,230,210	1,215,920	1,228,907	1,286,272
Other financial corporations	40,885	36,425	40,872	46,120
Public non financial corporations	170,149	153,708	170,149	149,628
Other non financial corporations	468,230	451,392	468,230	503,979
Other resident sectors	550,947	574,395	549,656	586,544
d.Securities other than shares included in broad money	16,568	16,493	16,371	16,435
Other financial corporations	4,702	4,710	4,702	4,683
Public non financial corporations	868	872	868	881
Other non financial corporations	4,885	4,848	4,885	4,808
Other resident sectors	6,113	6,063	5,915	6,063
Deposits excluded from broad money	24,676	24,779	24,823	24,833
of which: Other financial corporations	-	-	-	-
Securities other than shares excluded from broad money	-	-	-	-
of which: Other financial corporations	-	-	-	-
Loans	13,137	14,980	13,137	14,212
of which: Other financial corporations	3,782	5,625	3,782	4,861
Financial Derivatives	3,053	2,101	3,053	2,591
of which: Other financial corporations	942	-	942	-
Trade credit & advances	246	620	246	1,230
of which: Other financial corporations	-	-	-	-
Shares & other equity	968,609	1,090,584	1,046,118	1,076,457
Other items (net)	(69,819)	(135,562)	(136,100)	(75,466)
Other liabilities (includes central bank float)	972,616	1,012,509	977,043	1,000,681
less: Other assets	1,059,336	1,140,245	1,078,381	1,114,668
plus: Consolidation adjustment	16,901	(7,826)	(34,762)	38,521

2.1 Pakistan Monetary Survey (Depository Corporation Survey)

(Million Rupees)

Items	2008			2009	
	Oct.	Nov.	Dec.	Jan.	Feb.
Net Foreign Assets	465,146	447,053	514,859	511,981	502,254
Claims on nonresidents	843,612	1,050,184	1,138,531	1,160,187	1,151,714
less: Liabilities to nonresidents	378,466	603,131	623,671	648,206	649,460
Domestic claims (a+b)	5,043,179	5,172,010	5,157,008	5,132,951	5,202,980
a-Net Claims on general government (1+2)	1,669,459	1,773,470	1,706,039	1,745,887	1,833,724
1- Net claims on central government	1,876,340	1,990,149	1,929,007	1,974,362	2,074,378
Claims on central government	2,143,776	2,242,373	2,236,349	2,241,050	2,351,266
less: Liabilities to central government	267,436	252,224	307,342	266,689	276,888
2-Net claims on provincial governments	(206,881)	(216,679)	(222,968)	(228,475)	(240,654)
Claims on provincial governments	30,744	24,870	22,851	24,169	19,321
less: Liabilities to provincial governments	237,625	241,549	245,819	252,643	259,975
b-Claims on other sectors	3,373,720	3,398,540	3,450,969	3,387,064	3,369,255
Other financial corporations	103,225	100,844	102,971	92,994	104,536
Public non financial corporations	250,245	250,266	259,737	253,037	261,643
Other non financial corporations	2,305,733	2,325,889	2,354,846	2,327,551	2,289,317
Other resident sectors	714,518	721,541	733,416	713,483	713,760
Broad money liabilities (a+b+c+d)	4,452,741	4,521,745	4,628,914	4,569,998	4,617,669
a.Currency outside depository corporations	1,103,663	1,116,319	1,127,591	1,122,436	1,126,552
b.Transferable deposits	2,056,763	2,112,869	2,181,909	2,149,553	2,189,666
Other financial corporations	27,868	29,502	34,149	37,528	35,873
Public non financial corporations	125,751	129,538	116,300	118,358	133,566
Other non financial corporations	704,355	730,665	778,102	760,604	770,351
Other resident sectors	1,198,788	1,223,164	1,253,358	1,233,062	1,249,876
less: Central bank float	-	-	-	-	-
c.Other Deposits	1,275,871	1,275,707	1,303,263	1,282,271	1,285,586
Other financial corporations	37,241	26,490	24,985	23,079	23,876
Public non financial corporations	148,204	139,285	150,904	142,283	144,621
Other non financial corporations	512,788	523,100	507,313	523,629	521,233
Other resident sectors	577,639	586,832	620,061	593,280	595,856
d.Securities other than shares included in broad money	16,444	16,851	16,150	15,739	15,864
Other financial corporations	4,729	4,418	4,613	4,645	4,697
Public non financial corporations	886	877	839	610	614
Other non financial corporations	4,755	5,349	4,667	4,523	4,611
Other resident sectors	6,074	6,206	6,031	5,961	5,942
Deposits excluded from broad money	27,821	27,811	27,839	27,837	27,803
of which: Other financial corporations	-	-	-	-	-
Securities other than shares excluded from broad money	-	-	-	-	-
of which: Other financial corporations	-	-	-	-	-
Loans	12,731	12,176	13,420	12,151	12,513
of which: Other financial corporations	3,380	2,825	3,441	2,818	3,180
Financial Derivatives	2,581	2,571	2,561	19,488	6,624
of which: Other financial corporations	-	-	-	-	-
Trade credit & advances	5,627	7,618	8,480	5,254	24
of which: Other financial corporations	-	-	-	-	-
Shares & other equity	1,070,558	1,118,412	1,141,065	1,176,170	1,203,882
Other items (net)	(52,479)	(56,035)	(133,452)	(155,457)	(163,234)
Other liabilities (includes central bank float)	1,165,591	1,151,053	1,149,249	1,136,469	1,139,323
less: Other assets	1,268,816	1,204,996	1,269,131	1,271,487	1,258,493
plus: Consolidation adjustment	50,746	(2,092)	(13,570)	(20,440)	(44,064)

Note: Depository Corporations include SBP, Banks, DFIs and Deposit Accepting Non Bank Financial Companies. Therefore, these estimates are not comparable with Analytical Accounts of Banking sector (published up to June 2008) and monetary aggregates of weekly monetary survey based on data of SBP and Scheduled banks. Methodological changes are given at the following link:

<http://www.sbp.org.pk/departments/stats/ntb.htm>

2.2 Analytical Accounts of State Bank of Pakistan (Central Bank Survey)

(Million Rupees)

Items	2008			
	Jun.	Jul.	Aug.	Sep.
Net foreign assets	611,547	552,047	499,587	450,292
Claims on nonresidents	899,780	850,919	810,560	766,550
a) Monetary Gold, Coin and Bullion	130,971	135,973	131,337	143,112
b) Holdings of SDRs	14,769	15,424	15,844	16,153
c) Foreign currency	11,074	16,396	20,551	25,048
d) Deposits	594,251	559,974	508,794	452,451
e) Securities other than shares (Foreign)	30,121	-	7,239	688
f) Loans	-	-	-	-
g) Financial derivatives	-	-	-	-
h) Other	118,594	123,152	126,795	129,098
<i>Of which: Quota-IMF</i>	115,304	119,783	123,502	125,614
less: Liabilities to nonresidents	288,233	298,871	310,972	316,258
a) Deposits	81,679	85,927	91,504	93,857
b) Securities other than shares	115,517	119,319	123,200	125,817
c) Loans	91,037	93,625	96,268	96,584
d) Financial derivatives	-	-	-	-
e) Other	-	-	-	-
Claims on Other Depository Corporations	221,362	230,162	205,422	270,156
Net claims on General Government	997,727	1,047,524	1,159,926	1,233,990
Net claims on Central Government	1,031,569	1,086,584	1,210,095	1,269,863
Claims on Central Government	1,076,805	1,111,283	1,230,592	1,296,153
a) Securities other than Shares	1,071,347	1,105,855	1,225,187	1,290,784
b) Other claims	5,458	5,428	5,405	5,369
less: Liabilities to Central Government	45,236	24,698	20,497	26,289
a) Deposits	45,236	24,698	20,497	26,289
b) Other liabilities	-	-	-	-
Net claims on Provincial Government	(33,842)	(39,061)	(50,170)	(35,873)
Claims on Provincial and Local Government	-	-	-	-
a) Securities other than Shares	-	-	-	-
b) Other claims	-	-	-	-
less: Liabilities to Provincial and Local Government	33,842	39,061	50,170	35,873
a) Deposits	33,842	39,061	50,170	35,873
b) Other liabilities	-	-	-	-
Claims on other sectors	26,395	27,417	27,666	27,728
a) Other financial corporations	15,404	14,998	14,998	14,998
b) Public non-financial corporations	550	550	550	550
c) Other non-financial corporations	-	1,453	1,728	1,713
d) Other resident sectors	10,440	10,416	10,390	10,466
Monetary base	1,469,632	1,411,665	1,426,497	1,548,689
a) Currency in Circulation	1,045,857	1,056,721	1,070,325	1,168,082
b) Liabilities to Other Depository Corporations	423,775	354,944	356,172	380,606
1) Reserve deposits	423,775	354,944	356,172	380,606
2) Other liabilities	-	-	-	-

2.2 Analytical Accounts of State Bank of Pakistan (Central Bank Survey)

(Million Rupees)

Items	2008			
	Jun.	Jul.	Aug.	Sep.
Deposits included in broad money	1,991	713	778	706
Transferable deposits	14	23	82	69
a) Other financial corporations	4	2	2	2
b) Public non-financial corporations	-	-	-	-
c) Other non-financial corporations	10	22	80	67
d) Other resident sectors	-	-	-	-
Other deposits	1,976	690	697	637
a) Other financial corporations	589	590	602	543
b) Public non-financial corporations	-	-	-	-
c) Other non-financial corporations	-	-	-	-
d) Other resident sectors	1,388	100	95	93
Securities other than shares included in broad money	-	-	-	-
a) Other financial corporations	-	-	-	-
b) Public non-financial corporations	-	-	-	-
c) Other non-financial corporations	-	-	-	-
d) Other resident sectors	-	-	-	-
Deposits excluded from broad money	16,632	24,779	24,823	24,833
<i>Of which: Other financial corporations</i>	-	-	-	-
Securities other than shares excluded from broad money	-	-	-	-
<i>Of which: Other financial corporations</i>	-	-	-	-
Loans	-	-	-	-
<i>Of which: Other financial corporations</i>	-	-	-	-
Financial derivatives	2,040	2,040	2,040	2,540
<i>Of which: Other financial corporations</i>	-	-	-	-
Trade credit and advances	-	-	-	-
<i>Of which: Other financial corporations</i>	-	-	-	-
Shares and Other equity	322,861	419,712	389,011	408,508
a) Funds contributed by owners	100	100	100	100
b) Retained earnings	96,441	188,208	162,219	169,750
c) General & special reserves	76,279	76,279	76,279	76,279
d) SDR allocation	1,526	1,526	1,526	1,526
e) Valuation adjustment	148,515	153,599	148,887	160,853
Other items (net)	43,874	(1,759)	49,450	(3,109)
Other liabilities	554,004	552,327	560,188	529,737
<i>Less: Other Assets</i>	510,130	554,086	510,738	532,847

2.2 Analytical Accounts of State Bank of Pakistan (Central Bank Survey)

(Million Rupees)

Items	2008			2009	
	Oct.	Nov.	Dec.	Jan.	Feb.
Net foreign assets	291,208	250,889	327,422	335,611	331,686
Claims on nonresidents	611,507	802,120	893,512	923,268	918,477
a) Monetary Gold, Coin and Bullion	123,632	133,004	141,715	150,374	157,507
b) Holdings of SDRs	16,298	14,176	14,549	13,968	13,048
c) Foreign currency	9,030	17,164	35,395	45,278	42,523
d) Deposits	333,806	374,819	317,493	345,020	318,038
e) Securities other than shares (Foreign)	-	138,061	254,963	243,230	262,503
f) Loans	-	-	-	-	-
g) Financial derivatives	-	-	-	-	-
h) Other	128,742	124,896	129,397	125,397	124,858
<i>Of which: Quota-IMF</i>	125,573	121,578	125,938	121,800	121,146
less: Liabilities to nonresidents	320,299	551,231	566,090	587,657	586,791
a) Deposits	98,138	94,964	95,275	134,609	136,177
b) Securities other than shares	126,533	367,098	377,176	367,290	363,977
c) Loans	95,627	89,169	93,638	85,758	86,637
d) Financial derivatives	-	-	-	-	-
e) Other	-	-	-	-	-
Claims on Other Depository Corporations	270,753	256,111	314,494	307,971	316,093
Net claims on General Government	1,283,577	1,365,183	1,231,391	1,264,423	1,307,483
Net claims on Central Government	1,345,097	1,422,510	1,287,090	1,327,673	1,366,241
Claims on Central Government	1,365,552	1,442,957	1,354,093	1,348,106	1,391,399
a) Securities other than Shares	1,360,199	1,437,620	1,348,779	1,342,801	1,386,103
b) Other claims	5,353	5,336	5,315	5,305	5,296
less: Liabilities to Central Government	20,454	20,446	67,004	20,433	25,158
a) Deposits	20,454	20,446	67,004	20,433	25,158
b) Other liabilities	-	-	-	-	-
Net claims on Provincial Government	(61,521)	(57,327)	(55,699)	(63,249)	(58,758)
Claims on Provincial and Local Government	-	-	-	-	-
a) Securities other than Shares	-	-	-	-	-
b) Other claims	-	-	-	-	-
less: Liabilities to Provincial and Local Government	61,521	57,327	55,699	63,249	58,758
a) Deposits	61,521	57,327	55,699	63,249	58,758
b) Other liabilities	-	-	-	-	-
Claims on other sectors	26,451	26,984	26,077	26,258	26,352
a) Other financial corporations	15,393	15,392	15,393	15,392	15,392
b) Public non-financial corporations	545	1,045	6	6	6
c) Other non-financial corporations	-	-	-	-	-
d) Other resident sectors	10,513	10,547	10,678	10,859	10,954
Monetary base	1,427,649	1,421,397	1,445,153	1,431,992	1,432,986
a) Currency in Circulation	1,174,246	1,188,079	1,205,289	1,186,535	1,190,891
b) Liabilities to Other Depository Corporations	253,403	233,318	239,864	245,456	242,095
1) Reserve deposits	253,403	233,318	239,864	245,456	242,095
2) Other liabilities	-	-	-	-	-

2.2 Analytical Accounts of State Bank of Pakistan (Central Bank Survey)

(Million Rupees)

Items	2008			2009	
	Oct.	Nov.	Dec.	Jan.	Feb.
Deposits included in broad money	2,678	2,774	2,595	1,889	1,874
Transferable deposits	1,419	1,417	1,411	664	661
a) Other financial corporations	4	5	5	5	5
b) Public non-financial corporations	-	-	-	-	-
c) Other non-financial corporations	22	19	14	32	30
d) Other resident sectors	1,393	1,393	1,393	627	627
Other deposits	1,258	1,357	1,184	1,225	1,213
a) Other financial corporations	497	490	505	550	574
b) Public non-financial corporations	-	-	-	-	-
c) Other non-financial corporations	-	-	-	-	-
d) Other resident sectors	761	867	679	675	639
Securities other than shares included in broad money	-	-	-	-	-
a) Other financial corporations	-	-	-	-	-
b) Public non-financial corporations	-	-	-	-	-
c) Other non-financial corporations	-	-	-	-	-
d) Other resident sectors	-	-	-	-	-
Deposits excluded from broad money	27,821	27,811	27,839	27,837	27,803
<i>Of which: Other financial corporations</i>	-	-	-	-	-
Securities other than shares excluded from broad	-	-	-	-	-
<i>Of which: Other financial corporations</i>	-	-	-	-	-
Loans	-	-	-	-	-
<i>Of which: Other financial corporations</i>	-	-	-	-	-
Financial derivatives	2,540	2,540	2,540	2,540	2,540
<i>Of which: Other financial corporations</i>	-	-	-	-	-
Trade credit and advances	-	-	-	-	-
<i>Of which: Other financial corporations</i>	-	-	-	-	-
Shares and Other equity	398,465	421,951	441,833	477,781	511,442
a) Funds contributed by owners	100	100	100	100	100
b) Retained earnings	179,502	193,464	204,485	135,192	161,604
c) General & special reserves	76,279	76,279	76,289	172,729	172,729
d) SDR allocation	1,526	1,526	1,526	1,526	1,526
e) Valuation adjustment	141,058	150,582	159,434	168,234	175,483
Other items (net)	12,836	22,695	(20,577)	(7,776)	4,970
Other liabilities	669,483	658,846	671,788	665,267	659,275
<i>Less: Other Assets</i>	656,648	636,151	692,365	673,043	654,305

1. The table shows monetary statistics of the Central Bank (State Bank of Pakistan) according to the guidelines of IMF Monetary and Financial Statistics Manual (MFSM 2000). Compilation methodology is available at:

<http://www.sbp.org.pk/departments/Guidelines.htm>

2. General Government includes Central and Provincial Governments.

3. Provincial Governments includes Local & Provincial Governments.

4. The data may not tally with the table 2 at http://www.sbp.org.pk/ecodata/Ana_Acc_Sbp.pdf and table 2.2 of Statistical Bulletin due to difference in classification and Sectorization.

5. Note Explaining major changes is available at: <http://www.sbp.org.pk/departments/stats/ntb.htm>

2.3 Analytical Accounts of Shheduled Banks

Other Depository Corporations

(Million Rupees)

Item	2008			
	Jun.	Jul.	Aug.	Sep.
Net foreign assets	187,110	179,844	180,289	178,391
Claims on nonresidents	235,156	232,378	235,156	243,355
a) Foreign currency	11,037	10,948	11,037	16,413
b) Deposits	137,879	138,095	137,879	137,331
c) Securities other than shares	86,055	83,221	86,055	89,610
d) Loans	-	-	-	-
e) Financial derivatives	-	-	-	-
f) Other	185	114	185	-
less: Liabilities to nonresidents	48,046	52,534	54,867	64,964
a) Deposits	32,216	34,239	32,216	38,405
b) Securities other than shares	-	-	-	-
c) Loans	15,760	18,230	15,795	26,507
d) Financial derivatives	-	-	-	-
e) Other	69	66	6,856	52
Claims on Central bank	490,761	423,606	490,761	437,385
a) Currency	69,077	67,348	69,077	65,491
b) Reserve deposits	45,391	44,220	45,391	42,186
c) Other claims	376,293	312,038	376,293	329,708
Net Claims on General Government	475,192	503,821	475,192	355,512
Net claims on Central Government	609,766	632,058	609,766	494,984
Claims on Central Government	829,379	858,963	829,379	753,830
a) Securities other than Shares	737,477	785,139	737,477	662,829
b) Other claims	91,902	73,825	91,902	91,001
less: Liabilities to Central Government	219,613	226,905	219,613	258,846
a) Deposits	219,613	226,905	219,613	258,846
b) Other liabilities	-	-	-	-
Net claims on Provincial Governments	(134,574)	(128,237)	(134,574)	(139,472)
Claims on Provincial Governments	46,753	42,088	46,753	35,259
a) Securities other than Shares	75	75	75	75
b) Other claims	46,678	42,012	46,678	35,184
less: Liabilities to Provincial Governments	181,327	170,325	181,327	174,731
a) Deposits	181,325	170,323	181,325	174,729
b) Other liabilities	2	2	2	2
Claims on other sectors	3,171,282	3,114,947	3,169,047	3,314,589
a) Other financial corporations	99,049	90,186	99,049	93,089
b) Public non-financial corporations	188,174	178,294	188,174	239,602
c) Other non-financial corporations	2,161,487	2,135,707	2,159,889	2,276,729
d) Other resident sectors	722,572	710,760	721,935	705,170

2.3 Analytical Accounts of Shheduled Banks

Other Depository Corporations

(Million Rupees)

Item	2008			
	Jun.	Jul.	Aug.	Sep.
Liabilities to central bank	233,224	232,754	233,224	252,725
Deposits included in broad money	3,542,547	3,422,757	3,542,523	3,399,374
Transferable deposits	2,314,313	2,207,526	2,314,313	2,113,738
a) Other financial corporations	40,398	44,094	40,398	28,113
b) Public non-financial corporations	142,629	112,479	142,629	115,638
c) Other non-financial corporations	855,276	819,497	855,276	745,833
d) Other resident sectors	1,276,011	1,231,456	1,276,011	1,224,154
Other deposits	1,228,234	1,215,231	1,228,210	1,285,635
a) Other financial corporations including	40,297	35,835	40,270	45,577
b) Public non-financial corporations	170,149	153,708	170,149	149,628
c) Other non-financial corporations	468,230	451,392	468,230	503,979
d) Other resident sectors	549,559	574,295	549,561	586,451
Securities other than shares, included in broad money	16,568	16,493	16,371	16,435
a) Other financial corporations	4,702	4,710	4,702	4,683
b) Public non-financial corporations	868	872	868	881
c) Other non-financial corporations	4,885	4,848	4,885	4,808
d) Other resident sectors	6,113	6,063	5,915	6,063
Deposits excluded from broad money	-	-	-	-
Of which: Other financial corporations	-	-	-	-
Securities other than shares, excluded from broad money	-	-	-	-
Of which: Other financial corporations	-	-	-	-
Loans	13,137	14,980	13,137	14,212
Of which: Other financial corporations	3,782	5,625	3,782	4,861
Financial derivatives	1,013	61	1,013	51
Of which: Other financial corporations	942	-	942	-
Trade credit and advances	246	620	246	1,230
Of which: Other financial corporations	-	-	-	-
Shares and other equity	645,748	670,873	657,107	667,948
a) Funds contributed by owners	303,165	316,563	303,451	319,821
b) Retained earnings	120,659	131,420	129,549	133,360
c) General and special reserves	169,349	165,037	169,651	170,117
d) Valuation adjustment	52,576	57,852	54,457	44,650
Other items (net)	(127,646)	(135,081)	(147,841)	(63,639)
Other liabilities	418,612	460,182	416,855	470,944
less: Other assets	549,206	586,159	567,643	581,822
plus: Consolidation adjustment	2,947	(9,104)	2,947	47,239

2.3 Analytical Accounts of Shheduled Banks

Other Depository Corporations

(Million Rupees)

Item	2008			2009	
	Oct.	Nov.	Dec.	Jan.	Feb.
Net foreign assets	173,938	196,164	187,438	176,370	170,567
Claims on nonresidents	232,105	248,064	245,019	236,919	233,236
a) Foreign currency	13,736	19,042	19,729	14,009	13,872
b) Deposits	131,876	139,481	137,047	140,676	136,260
c) Securities other than shares	86,492	89,540	88,243	82,234	83,104
d) Loans	-	-	-	-	-
e) Financial derivatives	-	-	-	-	-
f) Other	-	-	-	-	-
less: Liabilities to nonresidents	58,167	51,900	57,581	60,550	62,669
a) Deposits	40,443	34,252	42,171	43,413	42,940
b) Securities other than shares	-	-	-	-	7
c) Loans	17,668	17,497	15,132	14,109	17,117
d) Financial derivatives	-	-	-	2,637	2,224
e) Other	56	151	278	390	382
Claims on Central bank	333,663	314,047	322,998	309,504	308,074
a) Currency	70,584	71,760	77,698	64,100	64,339
b) Reserve deposits	31,014	26,698	28,309	18,143	25,955
c) Other claims	232,066	215,589	216,991	227,262	217,781
Net Claims on General Government	385,883	408,287	474,648	481,464	526,241
Net claims on Central Government	531,243	567,638	641,917	646,689	708,137
Claims on Central Government	778,225	799,416	882,255	892,945	959,867
a) Securities other than Shares	664,519	671,720	749,157	762,529	829,540
b) Other claims	113,705	127,696	133,098	130,416	130,327
less: Liabilities to central government	246,982	231,778	240,338	246,256	251,730
a) Deposits	246,982	231,778	240,338	246,256	251,730
b) Other liabilities	-	-	-	-	-
Net claims on Provincial Governments	(145,360)	(159,352)	(167,269)	(165,225)	(181,896)
Claims on Provincial Governments	30,744	24,870	22,851	24,169	19,321
a) Securities other than Shares	75	75	-	-	-
b) Other claims	30,669	24,795	22,851	24,168	19,321
less: Liabilities to Provincial Governments	176,104	184,222	190,121	189,394	201,217
a) Deposits	176,102	184,220	190,119	189,392	201,215
b) Other liabilities	2	2	2	2	2
Claims on other sectors	3,347,269	3,371,556	3,424,893	3,360,806	3,342,903
a) Other financial corporations	87,832	85,452	87,578	77,601	89,144
b) Public non-financial corporations	249,699	249,222	259,731	253,031	261,637
c) Other non-financial corporations	2,305,733	2,325,889	2,354,846	2,327,551	2,289,317
d) Other resident sectors	704,005	710,994	722,738	702,623	702,806

2.3 Analytical Accounts of Shheduled Banks

Other Depository Corporations

(Million Rupees)

Item	2008			2009	
	Oct.	Nov.	Dec.	Jan.	Feb.
Liabilities to Central bank	256,732	265,159	304,793	298,986	287,680
Deposits included in broad money	3,329,956	3,385,801	3,482,578	3,429,934	3,473,379
Transferable deposits	2,055,344	2,111,452	2,180,498	2,148,889	2,189,005
a) Other financial corporations	27,864	29,497	34,145	37,524	35,868
b) Public non-financial corporations	125,751	129,538	116,300	118,358	133,566
c.) Other non-financial corporations	704,334	730,646	778,088	760,572	770,321
d) Other resident sectors	1,197,395	1,221,771	1,251,965	1,232,435	1,249,249
Other deposits	1,274,613	1,274,349	1,302,080	1,281,046	1,284,374
a) Other financial corporations including	36,744	26,000	24,481	22,529	23,302
b) Public non-financial corporations	148,204	139,285	150,904	142,283	144,621
c) Other non-financial corporations	512,788	523,100	507,313	523,629	521,233
d) Other resident sectors	576,877	585,965	619,381	592,605	595,218
Securities other than shares, included in broad money	16,444	16,851	16,150	15,739	15,864
a) Other financial corporations	4,729	4,418	4,613	4,645	4,697
b) Public non-financial corporations	886	877	839	610	614
c) Other non-financial corporations	4,755	5,349	4,667	4,523	4,611
d) Other resident sectors	6,074	6,206	6,031	5,961	5,942
Deposits excluded from broad money	-	-	-	-	-
Of which: Other financial corporations	-	-	-	-	-
Securities other than shares, excluded from broad	-	-	-	-	-
Of which: Other financial corporations	-	-	-	-	-
Loans	12,731	12,176	13,420	12,151	12,513
Of which: Other financial corporations	3,380	2,825	3,441	2,818	3,180
Financial derivatives	41	31	21	16,948	4,084
Of which: Other financial corporations	-	-	-	-	-
Trade credit and advances	5,627	7,618	8,480	5,254	24
Of which: Other financial corporations	-	-	-	-	-
Shares and other equity	672,093	696,462	699,231	698,389	692,441
a) Funds contributed by owners	320,010	333,653	346,008	351,706	353,164
b) Retained earnings	131,003	139,337	134,867	127,520	106,388
c) General and special reserves	172,940	180,199	182,055	180,918	183,073
d) Valuation adjustment	48,140	43,273	36,301	38,245	49,816
Other items (net)	(41,618)	(78,808)	(97,738)	(138,748)	(138,150)
Other liabilities	496,108	492,207	477,462	471,202	480,048
less: Other assets	612,169	568,845	576,766	598,443	604,188
plus: Consolidation adjustment	74,443	(2,171)	1,566	(11,506)	(14,011)

Note: Other Depository Corporations include the data of Banks, DFIs, and Deposit Accepting Non Bank Financial Companies. Therefore, the estimates are not comparable with Analytical Accounts of Banking Sector (up to June 2008) and monetary aggregates of weekly monetary survey based on data of SBP and Scheduled Banks

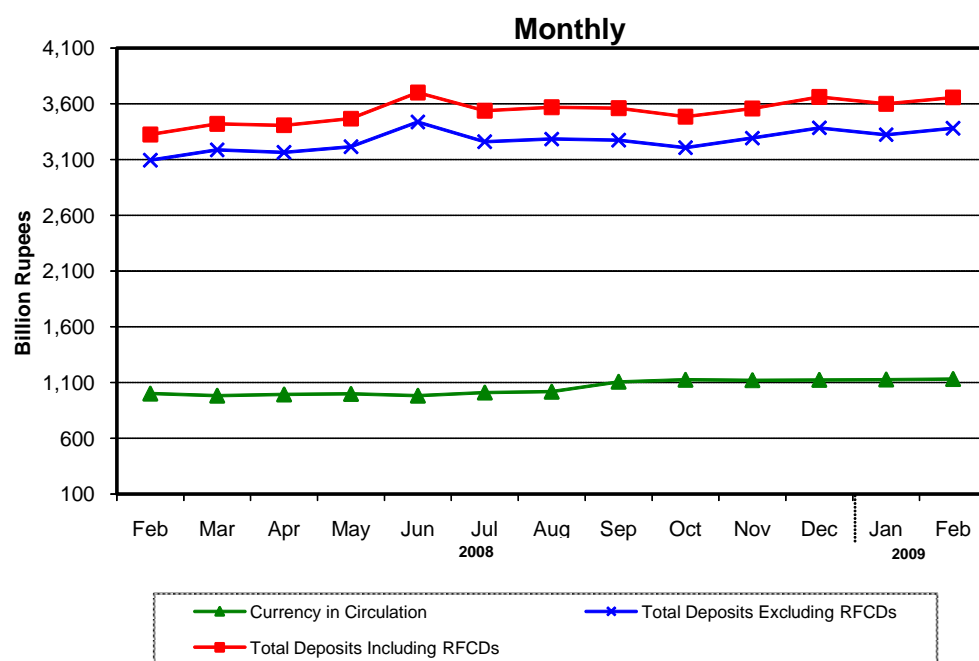
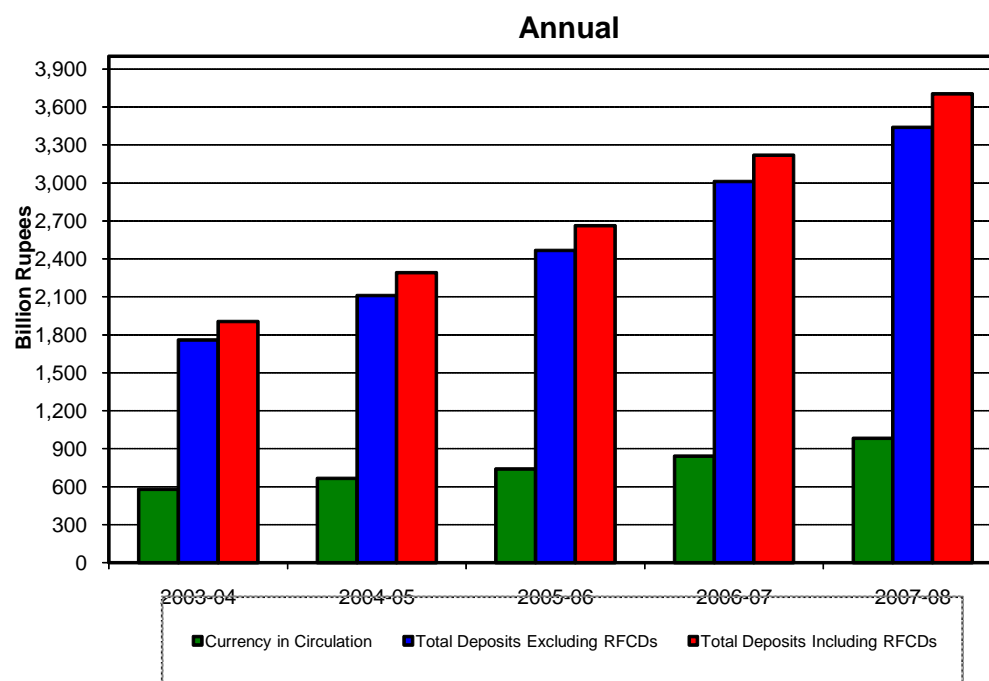
2. General Government includes Central and Provincial Government

3. Provincial Governments includes Provincial and Local Governmnets

4. The data may not tally with the table 3 at http://www.sbp.org.pk/ecodata/Ana_Acc_bkg.pdf and table 2.3 of Statistical Bulletin due to difference in classification and Sectorization

5. Note Explaining major changes is available at: <http://www.sbp.org.pk/departments/stats/ntb.htm>

Monetary Statistics



2.4 Monetary Statistics

(Million Rupees)

Last Saturday/ Last working day		Currency in Circulation	Other Deposits with SBP ¹	Currency in tills of Scheduled Banks	Banks' Deposits with SBP	Reserve Money (M ₀) (1+2+3+4)	Total Deposits Excluding RFCDs	Resident Foreign Currency Deposits	Total Deposits Including RFCDs	Broad Money (M ₂) (1+2+8)	Money Multi- plier (9/5)
		1	2	3	4	5	6	7	8	9	10
2004	Jun.	578,116	2,116	36,432	156,204	772,868	1,759,566	145,694	1,905,260	2,485,492	3.22
	Dec.	655,283	5,499	38,836	196,348	895,966	1,895,052	172,493	2,067,545	2,728,327	3.05
2005	Jun.	665,901	3,335	43,472	196,302	909,010	2,111,113	180,295	2,291,408	2,960,644	3.26
	Dec.	731,749	3,327	42,527	207,750	985,352	2,266,913	189,525	2,456,438	3,191,513	3.24
2006	Jun.	740,390	4,931	48,439	207,574	1,001,334	2,466,083	195,501	2,661,584	3,406,905	3.40
	Dec.	874,260	4,798	48,367	264,356	1,191,781	2,596,030	198,719	2,794,749	3,673,807	3.08
2007	Jun.	840,181	7,012	58,072	305,169	1,210,434	3,010,650	207,312	3,217,962	4,065,155	3.36
	Dec.	1,007,831	5,153	68,371	286,560	1,367,915	3,165,819	228,042	3,393,861	4,406,846	3.22
2008	Jun.	982,325	4,261	68,966	424,549	1,480,101	3,439,126	263,430	3,702,556	4,689,143	3.17
	Dec.	1,124,219	5,040	86,649	240,583	1,456,491	3,386,356	276,283	3,662,639	4,791,898	3.29
2008	Feb.	1,001,090	5,615	54,429	275,255	1,336,389	3,094,386	231,863	3,326,249	4,332,954	3.24
	Mar.	982,001	3,850	63,761	288,535	1,338,147	3,187,355	234,882	3,422,237	4,408,088	3.29
	Apr.	993,061	4,294	56,757	289,827	1,343,940	3,165,770	243,252	3,409,022	4,406,377	3.28
	May.	997,813	4,213	59,380	310,255	1,371,659	3,215,395	252,852	3,468,248	4,470,273	3.26
	Jun.	982,325	4,261	68,966	424,549	1,480,101	3,439,126	263,430	3,702,556	4,689,143	3.17
	Jul.	1,010,388	4,214	59,907	344,651	1,419,160	3,261,229	278,803	3,540,032	4,554,634	3.21
	Aug.	1,017,881	4,237	57,930	348,361	1,428,409	3,285,357	284,728	3,570,085	4,592,203	3.21
	Sep.	1,107,349	3,544	66,255	381,425	1,558,573	3,275,826	287,072	3,562,898	4,673,791	3.00
	Oct.	1,124,846	5,060	66,314	263,633	1,459,853	3,207,398	278,248	3,485,646	4,615,553	3.16
	Nov.	1,121,131	5,210	72,502	242,611	1,441,454	3,293,729	264,630	3,558,359	4,684,700	3.25
	Dec.	1,124,219	5,040	86,649	240,583	1,456,491	3,386,356	276,283	3,662,639	4,791,898	3.29
	Jan.	1,127,351	4,286	64,773	246,081	1,442,491	3,324,617	277,375	3,601,992	4,733,629	3.28
	Feb. ^P	1,131,689	4,254	64,799	242,742	1,443,484	3,381,627	277,375	3,659,002	4,794,945	3.32

1- Excluding IMF A/c Nos. 1 & 2, SAF loan account, counterpart funds, deposits of foreign central banks, foreign governments, international organizations and deposit money banks.

Note : i - Data is based on weekly returns. The quarterly data covers the period up to the last working day and the Monthly data up to the last Saturday of the month.

ii-Compilation of M1 based on weekly data has been discontinued. Now M1 is being compiled on the basis of monthly returns and is given in Table 2.1

2.5 Analysis of Causative Factors for Changes in Monetary Statistics

(Million Rupees)

Description	2005-06			2006-07		
	Jul.-Dec.	Jan.-Jun.	Total	Jul.-Dec.	Jan.-Jun.	Total
1. Public Sector	64,281	22,598	86,879	19,945	72,899	92,844
i) Budgetary support	80,232	(13,169)	67,063	37,278	64,737	102,015
ii) Commodity operations	(15,123)	35,048	19,926	(15,934)	6,724	(9,210)
iii) Effect of Zakat fund etc.	(829)	719	(110)	(1,400)	1,438	39
2. Credit to Non-Government Sector (A+B+C)	294,145	114,255	408,401	251,333	134,371	385,705
(A) Credit to private Sector	297,651	104,146	401,797	250,782	114,936	365,718
i) Commercial Banks	295,864	121,548	417,411	248,065	115,526	363,591
ii) Specialized Banks	1,787	(17,402)	(15,615)	2,717	(589)	2,128
(B) Credit to Public Sector Enterprise (PSEs)	(1,994)	9,636	7,643	(1,379)	21,068	19,689
i) Autonomous Bodies	(2,641)	7,396	4,755	4,475	16,694	21,169
ii) Others	(38)	2,437	2,399	(5,660)	4,433	(1,227)
iii) PSEs Special Account-Debt Replacement with SBP	686	(197)	489	(194)	(59)	(253)
(C) Other Financial Institutions (SBP Credit to NBFIs)	(1,512)	473	(1,038)	1,930	(1,632)	298
3. Counterpart Funds	14	(21)	(7)	34	(7)	27
4. Other Items (net)	(60,902)	(61,514)	(122,416)	6,640	(101,517)	(94,877)
5. Domestic Credit Expansion (+) / Contraction (-) (1+2+3+4)	297,539	75,318	372,857	277,953	105,746	383,699
6. Foreign Assets (net)	(66,670)	140,073	73,403	(11,050)	285,601	274,551
7. Monetary Expansion ((5+6)	230,869	215,392	446,260	266,903	391,347	658,250

	2008						
	Feb.	Mar.	Apr.	May.	Jun.	Jul.	Aug.
1. Public Sector	67,993	37,559	47,772	73,125	150,726	38,418	72,042
i) Budgetary support	64,102	12,708	24,091	31,284	190,065	58,239	72,259
ii) Commodity operations	3,596	23,780	23,772	42,024	(39,831)	(19,949)	(423)
iii) Effect of Zakat fund etc.	295	1,071	(91)	(183)	492	128	206
2. Credit to Non-Government Sector (A+B+C)	44,423	71,648	33,898	31,600	(3,145)	(50,021)	54,293
(A) Credit to private Sector	28,395	79,840	18,017	12,384	24,746	(42,486)	19,329
i) Commercial Banks	30,839	75,981	17,924	10,786	24,107	(43,009)	19,100
ii) Specialized Banks	(2,443)	3,860	93	1,599	639	523	230
(B) Credit to Public Sector Enterprise (PSEs)	15,836	(7,064)	15,833	19,147	(27,847)	(7,573)	34,967
i) Autonomous Bodies	4,764	(566)	(2,361)	6,038	2,084	(5,496)	3,388
ii) Others	11,073	(6,498)	18,194	13,203	(29,930)	(1,993)	31,579
iii) PSEs Special Account-Debt Replacement with SBP	0	0	0	(93)	0	(84)	0
(C) Other Financial Institutions (SBP Credit to NBFIs)	191	(1,129)	48	68	(44)	39	(3)
3. Counterpart Funds	(2)	0	0	(2)	(7)	0	0
4. Other Items (net)	(26,084)	2,006	(48,507)	36,505	13,673	(81,806)	(14,033)
5. Domestic Credit Expansion (+) / Contraction (-) (1+2+3+4)	86,328	111,213	33,162	141,228	161,247	(93,410)	112,302
6. Foreign Assets (net)	(55,064)	(36,078)	(34,874)	(77,332)	57,623	(41,099)	(74,733)
7. Monetary Expansion (+) / Contraction (-) (5+6)	31,264	75,134	(1,711)	63,896	218,870	(134,509)	37,569

Note 1.The composition of autonomous bodies has changed over the years. At present, WAPDA, OGDC, KESC, PTCL, PIA, and Pak. Steel are included in the autonomous bodies.
2.The data has been revised due to inclusion of privatization commission account with NBP in government deposits since Jun 2003 to Jun 2006 (half yearly basis) and Jun 2006 on monthly basis upto end-Jun 2007.

2.5 Analysis of Causative Factors for Changes in Monetary Statistics

(Million Rupees)

Description	2007-08 ^P			2008-09 ^P	
	Jul.-Dec.	Jan.-Jun.	Total	Jul.-Dec.	Total
1. Public Sector	201,602	382,213	583,815	219,510	219,510
i) Budgetary support	228,608	325,966	554,574	210,295	210,295
ii) Commodity operations	(26,000)	54,652	28,652	10,877	10,877
iii) Effect of Zakat fund etc.	(1,006)	1,594	588	(1,662)	(1,662)
2. Credit to Non-Government Sector (A+B+C)	274,965	166,705	441,670	264,394	264,394
(A) Credit to private Sector	261,354	147,073	408,427	203,143	203,143
i) Commercial Banks	259,406	142,837	402,243	204,753	204,753
ii) Specialized Banks	1,948	4,236	6,184	(1,610)	(1,610)
(B) Credit to Public Sector Enterprise (PSEs)	12,518	20,488	33,005	61,344	61,344
i) Autonomous Bodies	18,492	10,747	29,239	13,523	13,523
ii) Others	(5,949)	9,834	3,884	47,907	47,907
iii) PSEs Special Account-Debt Replacement with SBP	(25)	(93)	(118)	(86)	(86)
(C) Other Financial Institutions (SBP Credit to NBFIs)	1,093	(855)	238	(91)	(91)
3. Counterpart Funds	(12)	(12)	(24)	0	0
4. Other Items (net)	5,717	(89,809)	(84,092)	(89,249)	(89,249)
5. Domestic Credit Expansion (+) / Contraction (-) (1+2+3+4)	482,273	459,096	941,369	394,653	394,653
6. Foreign Assets (net)	(140,582)	(176,799)	(317,381)	(291,897)	(291,897)
7. Monetary Expansion ((5+6)	341,691	282,297	623,988	102,756	102,756

	2008				2009	
	Sep.	Oct.	Nov.	Dec.	Jan.	Feb. ^P
1. Public Sector	30,204	12,615	122,498	(56,267)	54,334	95,982
i) Budgetary support	27,987	(8,206)	117,727	(57,711)	54,598	93,629
ii) Commodity operations	3,708	21,504	4,725	1,312	201	2,253
iii) Effect of Zakat fund etc.	(1,492)	(683)	46	133	(465)	100
2. Credit to Non-Government Sector (A+B+C)	117,839	54,698	24,700	62,885	(46,588)	(22,811)
(A) Credit to private Sector	89,978	50,126	29,788	56,408	(45,264)	(24,812)
i) Commercial Banks	90,522	51,498	31,089	55,553	(46,774)	(25,908)
ii) Specialized Banks	(543)	(1,373)	(1,302)	855	1,510	1,096
(B) Credit to Public Sector Enterprise (PSEs)	27,870	4,620	(5,058)	6,518	(1,333)	2,029
i) Autonomous Bodies	11,782	554	1,443	1,852	91	1,603
ii) Others	16,088	4,066	(6,501)	4,668	(1,424)	426
iii) PSEs Special Account-Debt Replacement with SBP	0	0	0	(2)	0	0
(C) Other Financial Institutions (SBP Credit to NBFIs)	(9)	(48)	(29)	(41)	9	(27)
3. Counterpart Funds	0	0	0	0	0	0
4. Other Items (net)	(16,995)	(14,251)	2,662	35,174	(73,398)	1,965
5. Domestic Credit Expansion (+) / Contraction (-) (1+2+3+4)	131,048	53,062	149,860	41,791	(65,651)	75,136
6. Foreign Assets (net)	(73,066)	(102,612)	(65,793)	65,406	3,482	(13,821)
7. Monetary Expansion ((5+6)	57,982	(49,550)	84,067	107,197	(62,170)	61,315

2.6 Liabilities and Assets of the State Bank of Pakistan Issue Department

(Million Rupees)

Last Saturday/ Last working day		LIABILITIES		Total Liabilities / Assets	ASSETS					Rupee Coins / Notes
		Notes held in the Banking Department	Notes in Circulation		Gold and Foreign Assets					
					(2)					
					(1) Gold Coins and Bullion	Approved Foreign Exchange	(3) India Notes	Total		
2004	Jun. Dec.	160.8 126.0	611,742.9 690,946.2	611,903.7 691,072.2	47,532.1 47,532.1	514,138.8 434,236.5	543.8 543.8	562,214.7 482,312.4	2,799.2 3,067.7	
2005	Jun. Dec.	145.6 156.6	705,720.1 769,617.5	705,865.7 769,774.1	53,870.0 53,870.0	484,308.4 426,373.5	593.0 593.0	538,771.4 480,836.5	2,961.2 2,469.6	
2006	Jun. Dec.	139.3 140.9	784,235.9 917,808.9	784,375.2 917,949.9	76,317.3 76,317.3	567,347.6 561,728.7	562.6 562.6	644,227.4 638,608.5	2,865.5 2,640.0	
2007	Jun. Dec.	135.6 187.7	893,292.8 1,076,328.6	893,428.4 1,076,516.3	81,277.1 99,127.4	697,851.6 699,199.5	638.2 638.2	779,767.0 798,965.2	3,012.3 2,730.4	
2008	Jun. Dec.	160.7 205.8	1,050,148.2 1,225,792.0	1,050,308.9 1,225,997.8	122,618.6 133,004.4	465,771.5 147,248.2	638.2 683.7	589,028.4 280,936.3	2,722.5 2,576.5	
2008	Feb. Mar.	130.4 183.1	1,050,242.4 1,041,863.2	1,050,372.8 1,042,046.3	119,671.5 125,700.4	623,222.0 570,056.8	638.2 638.2	743,531.9 696,395.5	2,686.9 2,660.3	
	Apr. May. Jun.	145.5 165.5 160.7	1,044,472.9 1,051,806.8 1,050,148.2	1,044,618.4 1,051,972.3 1,050,308.9	121,351.9 122,618.6 122,618.6	557,199.1 439,025.4 465,771.5	638.2 638.2 638.2	679,189.3 562,282.3 589,028.4	2,632.4 2,586.4 2,722.5	
	Jul. Aug. Sep.	110.5 161.1 194.4	1,065,302.6 1,070,325.3 1,139,853.1	1,065,413.1 1,070,486.4 1,140,047.6	130,970.6 131,336.6 131,336.6	420,659.6 367,347.6 228,808.9	683.7 683.7 683.7	552,313.9 499,368.0 360,829.2	2,691.8 2,665.0 2,626.2	
	Oct. Nov. Dec.	110.8 138.7 205.8	1,185,624.3 1,188,079.1 1,225,792.0	1,185,735.2 1,188,217.8 1,225,997.8	143,111.6 133,004.4 133,004.4	189,572.8 212,797.2 147,248.2	683.7 683.7 683.7	333,368.0 346,485.3 280,936.3	2,613.8 2,596.5 2,576.5	
2009	Jan. Feb.	150.9 186.5	1,186,535.4 1,190,890.9	1,186,686.3 1,191,077.4	150,374.5 157,507.4	200,811.4 177,027.5	683.7 683.7	351,869.6 322,913.0	2,564.9 2,556.0	

2.6 Liabilities and Assets of the State Bank of Pakistan

Issue Department

(Million Rupees)

Last Saturday/ Last working day	A S S E T S								
	Domestic Assets				With Reserve Bank of India pending transfer to Pakistan				
	Govt. of Pakistan Securities	Exchange & other Commercial Papers	Total		Gold and Bullion	Sterling Securities	Govt. of India Securities	Rupee Coin	Total
2004 Jun.	45,671.5	78.5	48,549.2		773.1	350.1	12.8	3.8	1,139.8
Dec.	204,473.9	78.5	207,620.1		773.1	350.1	12.8	3.8	1,139.8
2005 Jun.	162,802.6	78.5	165,842.3		876.2	357.8	13.9	4.1	1,252.0
Dec.	285,137.5	78.5	287,685.7		876.2	357.8	13.9	4.1	1,252.0
2006 Jun.	135,585.4	78.5	138,529.4		1,240.4	360.9	13.2	3.9	1,618.4
Dec.	275,004.4	78.5	277,722.9		1,240.4	360.9	13.2	3.9	1,618.4
2007 Jun.	108,830.3	78.5	111,921.1		1,320.9	400.1	15.0	4.4	1,740.3
Dec.	272,714.7	78.5	275,523.6		1,608.1	400.1	15.0	4.4	2,027.5
2008 Jun.	456,070.5	78.5	458,871.9		1,989.2	400.1	15.0	4.4	2,408.6
Dec.	939,781.7	78.5	942,436.7		2,157.7	446.5	16.0	4.7	2,624.9
2008 Feb.	301,714.8	78.5	304,480.1		1,941.4	400.1	15.0	4.4	2,360.8
Mar.	340,453.3	78.5	343,192.2		2,039.2	400.1	15.0	4.4	2,458.6
Apr.	360,330.1	78.5	363,041.0		1,968.7	400.1	15.0	4.4	2,388.1
May.	484,616.5	78.5	487,281.4		1,989.2	400.1	15.0	4.4	2,408.6
Jun.	456,070.5	78.5	458,871.9		1,989.2	400.1	15.0	4.4	2,408.6
Jul.	507,737.1	78.5	510,507.4		2,124.7	446.5	16.0	4.5	2,591.9
Aug.	565,777.1	78.5	568,520.6		2,130.6	446.5	16.0	4.5	2,597.8
Sep.	773,915.8	78.5	776,620.6		2,130.6	446.5	16.0	4.7	2,597.8
Oct.	846,886.0	78.5	849,578.3		2,321.7	446.5	16.0	4.7	2,788.9
Nov.	836,432.6	78.5	839,107.6		2,157.7	446.5	16.0	4.7	2,624.9
Dec.	939,781.7	78.5	942,436.7		2,157.7	446.5	16.0	4.7	2,624.9
2009 Jan.	829,266.7	78.5	831,910.1		2,439.7	446.5	16.0	4.7	2,906.7
Feb.	850,201.9	78.5	852,836.4		2,555.2	446.5	16.0	4.7	3,022.4

1 Gold is valued at end financial year (June) on the basis of closing London Market Rate.

Source: Finance Department SBP

2. Approved Foreign Exchanges includes SDR held with IMF w.e.f June2004

3. Receivable from Reserve Bank of India.

2.7 Liabilities and Assets of the State Bank of Pakistan

Banking Department

		(Million Rupees)											
Last Saturday/ Last working day		L I A B I L I T I E S								D e p o s i t s			
		Capital Paid-up	Reserve Fund	Rural Credit Fund	Industrial Credit Fund	Export Credit Fund	Loans Guar- antee Fund	Housing Credit Fund	Federal Govt.	Provincial Govts.	Banks	Others	Total
2004	Jun.	100.0	5,414.5	2,600.0	1,600.0	1,500.0	900.0	4,700.0	2,681.5	34,207.5	156,204.2	273,562.7	466,655.8
	Dec.	100.0	5,414.5	2,600.0	1,600.0	1,500.0	900.0	4,700.0	2,272.7	44,738.5	196,347.7	290,348.5	533,707.4
2005	Jun.	100.0	5,414.5	2,600.0	1,600.0	1,500.0	900.0	4,700.0	47,286.1	45,632.0	196,302.3	273,550.2	562,770.6
	Dec.	100.0	15,414.5	2,600.0	1,600.0	1,500.0	900.0	4,700.0	86,850.0	58,127.1	207,749.7	273,412.8	626,139.6
2006	Jun.	100.0	15,414.5	2,600.0	1,600.0	1,500.0	900.0	4,700.0	69,952.5	66,644.6	207,574.3	273,897.5	618,068.8
	Dec.	100.0	34,556.5	2,600.0	1,600.0	1,500.0	900.0	4,700.0	49,197.5	50,380.5	264,356.0	272,486.9	636,420.8
2007	Jun.	100.0	55,838.8	2,600.0	1,600.0	1,500.0	900.0	4,700.0	72,131.9	62,565.7	305,168.6	273,718.3	713,584.5
	Dec.	100.0	64,978.6	2,600.0	1,600.0	1,500.0	900.0	4,700.0	34,481.4	22,104.5	256,759.3	277,267.5	590,612.7
2008	Jun.	100.0	64,978.6	2,600.0	1,600.0	1,500.0	900.0	4,700.0	65,642.1	29,571.1	328,435.3	333,480.1	757,128.6
	Dec.	100.0	64,988.5	2,600.0	1,600.0	1,500.0	900.0	4,700.0	15,545.6	45,371.8	255,499.8	602,580.5	918,997.7
2008	Feb.	100.0	64,978.6	2,600.0	1,600.0	1,500.0	900.0	4,700.0	43,637.6	46,439.3	275,255.0	277,528.5	642,860.4
	Mar.	100.0	64,978.6	2,600.0	1,600.0	1,500.0	900.0	4,700.0	40,928.6	52,995.9	285,531.0	280,686.9	660,142.4
	Apr.	100.0	64,978.6	2,600.0	1,600.0	1,500.0	900.0	4,700.0	34,342.1	56,004.8	289,827.4	288,732.8	668,907.1
	May.	100.0	64,978.6	2,600.0	1,600.0	1,500.0	900.0	4,700.0	26,895.6	87,288.3	310,254.7	297,889.9	722,328.5
	Jun.	100.0	64,978.6	2,600.0	1,600.0	1,500.0	900.0	4,700.0	65,642.1	29,571.1	328,435.3	333,480.1	757,128.6
	Jul.	100.0	64,988.5	2,600.0	1,600.0	1,500.0	900.0	4,700.0	14,089.5	33,326.2	353,382.0	342,552.2	743,349.9
	Aug.	100.0	64,988.5	2,600.0	1,600.0	1,500.0	900.0	4,700.0	127.0	63,714.4	357,093.1	359,800.2	780,734.7
	Sep.	100.0	64,988.5	2,600.0	1,600.0	1,500.0	900.0	4,700.0	103.0	25,809.3	377,147.3	363,451.2	766,510.8
	Oct.	100.0	64,988.5	2,600.0	1,600.0	1,500.0	900.0	4,700.0	13,098.8	42,243.8	263,633.2	368,374.3	687,350.1
	Nov.	100.0	64,988.5	2,600.0	1,600.0	1,500.0	900.0	4,700.0	76.9	70,261.9	242,611.1	601,034.2	913,984.1
	Dec.	100.0	64,988.5	2,600.0	1,600.0	1,500.0	900.0	4,700.0	15,545.6	45,371.8	255,499.8	602,580.5	918,997.7
	Jan.	100.0	161,429.0	2,600.0	1,600.0	1,500.0	900.0	4,700.0	62.7	78,008.7	246,081.1	636,537.1	960,689.6
	Feb.	100.0	161,429.0	2,600.0	1,600.0	1,500.0	900.0	4,700.0	4,788.1	75,768.6	242,741.9	635,592.1	958,890.7

2.7 Liabilities and Assets of the State Bank of Pakistan

Banking Department

(Million Rupees)											
Last Saturday/ Last working day		LIABILITIES				Total Liabilities/ Assets	A S S E T S				
		Allocation of Special Drawing Rights	Bills Payable	Re- valuation Accounts	Other Liabi- lities		Notes and Coins ¹	Bills Purchased and Discounted			
								Internal			
								Export Sector	Others	Total	
2004	Jun.	1,526.0	494.4	45,205.6	38,946.0	569,642.3	160.8	3.6	33.4	37.0	
	Dec.	1,526.0	251.0	45,205.6	57,064.6	654,569.0	126.0	3.6	33.4	37.0	
2005	Jun.	1,526.0	1,099.7	51,646.6	54,792.1	688,649.3	145.6	3.6	33.4	37.0	
	Dec.	1,526.0	118.5	51,646.6	87,784.8	794,029.9	156.6	3.6	33.4	37.0	
2006	Jun.	1,526.0	472.7	74,406.9	183,199.2	904,488.6	139.3	3.6	33.4	37.0	
	Dec.	1,526.0	152.8	74,406.9	112,684.2	871,147.1	140.9	3.6	33.4	37.0	
2007	Jun.	1,526.0	571.9	79,440.9	176,548.6	1,038,910.7	135.6	3.6	33.4	37.0	
	Dec.	1,526.0	493.5	97,408.6	124,938.3	891,357.7	187.7	3.6	33.4	37.0	
2008	Jun.	1,526.0	1,335.1	121,280.9	285,918.0	1,243,567.2	160.7	3.6	33.4	37.0	
	Dec.	1,526.0	199.3	131,835.1	307,338.0	1,436,284.6	205.8	3.6	33.4	37.0	
2008	Feb.	1,526.0	203.2	118,286.0	152,003.0	991,257.2	130.4	3.6	33.4	37.0	
	Mar.	1,526.0	271.6	124,412.7	213,788.8	1,076,520.2	183.1	3.6	33.4	37.0	
	Apr.	1,526.0	173.2	119,993.6	221,414.9	1,088,393.3	145.2	3.6	33.4	37.0	
	May.	1,526.0	150.9	121,280.9	230,109.8	1,151,774.7	165.5	3.6	33.4	37.0	
	Jun.	1,526.0	1,335.1	121,280.9	285,918.0	1,243,567.2	160.7	3.6	33.4	37.0	
	Jul.	1,526.0	159.4	129,768.3	229,537.7	1,180,729.8	110.5	3.6	33.4	37.0	
	Aug.	1,526.0	210.1	130,140.4	252,803.8	1,241,803.5	161.1	3.6	33.4	37.0	
	Sep.	1,526.0	182.9	130,140.4	255,436.4	1,230,185.1	194.4	3.6	33.4	37.0	
	Oct.	1,526.0	200.9	142,106.3	267,049.6	1,174,621.4	110.8	3.6	33.4	37.0	
	Nov.	1,526.0	262.8	131,835.1	302,487.9	1,426,484.4	138.7	3.6	33.4	37.0	
	Dec.	1,526.0	199.3	131,835.1	307,338.0	1,436,284.6	205.8	3.6	33.4	37.0	
	2009	Jan.	1,526.0	152.7	149,487.0	219,629.9	1,504,314.2	150.9	3.6	33.4	37.0
		Feb.	1,526.0	371.1	156,735.7	260,791.1	1,551,143.5	186.5	3.6	33.4	37.0

¹ Includes all coins of various denominations

(Contd.)

2.7 Liabilities and Assets of the State Bank of Pakistan Banking Department

(Million Rupees)

Last Saturday/ Last working day		A S S E T S								
		Balance held outside Pakistan	SDR held with IMF	Govt. Debtor Balances	Loans and Advances to Scheduled Banks					Total (a)
					Agri- cultural Sector	Indus- trial Sector	Export Sector	Housing Sector	Others	
2004	Jun.	132,021.4	-	5,533.1	58,005.3	2,328.8	88,292.3	66.9	13,194.5	161,887.8
	Dec.	147,057.8	2,284.8	7,241.5	60,737.4	1,169.4	102,522.5	-	9,179.9	173,609.2
2005	Jun.	139,513.0	1,774.6	10,814.0	59,753.3	1,498.5	109,446.9	-	11,288.6	181,987.3
	Dec.	167,964.8	1,370.3	14,503.1	63,627.6	3,066.9	106,386.3	-	13,102.5	186,183.4
2006	Jun.	121,824.0	1,088.6	16,404.3	62,194.7	7,297.3	107,982.2	-	16,104.3	193,578.5
	Dec.	128,433.7	758.6	6,560.1	63,183.5	41,382.5	131,733.6	-	14,416.2	250,715.8
2007	Jun.	152,719.3	418.5	10,820.4	62,228.2	42,149.7	134,621.3	-	14,420.1	253,419.3
	Dec.	151,435.5	314.0	23,628.8	57,776.5	40,386.3	100,060.1	-	14,232.1	212,455.0
2008	Jun.	143,807.9	3,349.9	23,141.4	49,777.3	39,465.3	100,963.9	-	14,233.9	204,440.4
	Dec.	410,477.0	1,889.2	24,012.9	58,229.7	36,433.2	154,529.6	-	17,697.8	266,890.4
2008	Feb.	140,671.2	83.4	17,270.9	49,777.3	39,593.4	97,357.4	-	14,233.9	200,962.0
	Mar.	150,526.5	58.0	17,434.2	49,777.5	40,624.3	94,889.2	-	14,233.9	199,524.9
	Apr.	137,422.3	60.6	18,030.9	49,777.3	39,854.8	98,264.3	-	14,233.9	202,130.3
	May.	166,984.4	26.0	15,480.9	49,777.3	40,009.4	100,215.2	-	14,233.9	204,235.8
	Jun.	143,807.9	3,349.9	23,141.4	49,777.3	39,465.3	100,963.9	-	14,233.9	204,440.4
	Jul.	161,285.3	3,249.0	24,468.8	57,778.0	38,579.5	98,860.2	-	14,235.8	209,453.5
	Aug.	132,617.8	3,312.5	13,547.0	57,778.0	38,077.5	68,059.2	-	14,235.8	178,150.5
	Sep.	198,540.1	3,420.0	26,252.4	57,778.0	37,721.2	99,211.3	-	14,047.8	208,758.9
	Oct.	170,628.7	3,360.7	13,457.5	57,778.3	36,406.2	103,092.5	-	14,047.8	211,324.9
	Nov.	310,480.7	1,826.0	12,935.1	57,778.0	36,507.1	134,282.1	-	14,047.8	242,615.0
	Dec.	410,477.0	1,889.2	24,012.9	58,229.7	36,433.2	154,529.6	-	17,697.8	266,890.4
	Jan.	392,727.2	1,596.4	14,759.2	58,230.5	35,612.5	159,186.2	-	16,049.7	269,078.8
	Feb.	415,706.4	742.2	17,010.4	58,230.5	35,893.3	158,273.7	-	14,049.7	266,447.2

2.7 Liabilities and Assets of the State Bank of Pakistan

Banking Department

(Concl'd.)
(Million Rupees)

(in million Rupees)

Last Saturday/ Last working day		A S S E T S										
		Loans and Advances to Non-Bank Financial Institutions				Other Loans And Advances (a+b)	I n v e s t m e n t s					Other Assets
							Indus- trial Sector	Housing Sector	Others	Total (b)	Sche- duled Banks	
2004	Jun.	4,418.0	12,607.3	4,219.8	21,245.1	183,132.9	34,000.8	1,747.1	87,524.9	1,291.2	124,564.0	124,193.1
	Dec.	608.1	12,607.3	3,416.7	16,632.1	190,241.3	34,000.8	1,747.1	149,989.0	1,331.2	187,068.1	120,512.6
2005	Jun.	595.0	11,242.3	3,416.7	15,254.0	197,241.4	28,273.8	1,673.4	168,392.0	933.5	199,272.6	139,850.8
	Dec.	358.3	11,242.3	2,141.7	13,742.3	199,925.7	28,273.8	1,673.4	249,452.0	890.9	280,290.1	129,782.4
2006	Jun.	831.7	11,242.3	2,141.7	14,215.7	207,794.2	24,664.3	1,673.4	380,997.3	1,043.2	408,378.1	148,823.1
	Dec.	2,832.0	11,242.3	2,071.7	16,146.0	266,861.8	25,104.3	1,673.4	292,215.7	1,029.5	320,022.9	148,332.1
2007	Jun.	2,831.3	11,242.3	-	14,073.6	267,492.9	18,058.5	2,113.4	351,843.9	1,051.0	373,066.8	234,220.1
	Dec.	2,784.4	11,242.3	-	14,026.7	226,481.7	15,568.9	3,313.4	299,369.8	1,126.0	319,378.0	169,895.0
2008	Jun.	1,409.2	11,242.3	-	12,651.5	217,091.9	15,568.7	3,813.4	586,497.2	1,049.5	606,928.8	249,049.6
	Dec.	1,324.2	11,242.3	-	12,566.5	279,456.9	16,068.7	3,813.4	430,108.0	1,082.0	451,072.0	269,133.8
2008	Feb.	2,926.6	11,242.3	-	14,168.9	215,130.9	16,068.8	3,313.4	439,709.3	1,126.0	460,217.5	157,716.0
	Mar.	1,332.2	11,242.3	-	12,574.5	212,099.4	15,568.9	3,813.4	482,455.5	1,049.5	502,887.2	193,295.0
	Apr.	1,345.3	11,242.3	-	12,587.6	214,717.9	15,568.9	3,813.4	533,924.4	1,049.5	554,356.2	163,623.0
	May.	1,413.5	11,242.3	-	12,655.8	216,891.6	15,568.7	3,813.4	513,477.4	1,049.4	533,909.0	218,280.4
	Jun.	1,409.2	11,242.3	-	12,651.5	217,091.9	15,568.7	3,813.4	586,497.2	1,049.5	606,928.8	249,049.6
	Jul.	1,407.8	11,242.3	-	12,650.1	222,103.6	15,568.7	3,813.4	571,732.0	1,068.4	592,182.4	177,293.1
	Aug.	1,404.8	11,242.3	-	12,647.1	190,797.6	15,568.7	3,813.4	661,618.9	1,068.4	682,069.3	219,261.2
	Sep.	1,395.8	11,242.3	-	12,638.1	221,396.4	15,568.7	3,813.4	514,862.3	1,068.4	535,312.7	245,031.6
	Oct.	1,347.5	11,242.3	-	12,589.8	223,914.7	15,568.7	3,813.4	488,524.7	1,082.0	508,988.7	254,123.5
	Nov.	1,318.8	11,242.3	-	12,561.1	255,176.1	16,068.7	3,813.4	601,460.1	1,082.0	622,424.1	223,466.6
	Dec.	1,324.2	11,242.3	-	12,566.5	279,456.9	16,068.7	3,813.4	430,108.0	1,082.0	451,072.0	269,133.8
2009	Jan.	1,286.4	11,242.2	-	12,528.7	281,607.5	16,068.0	3,813.4	514,087.4	1,082.0	535,050.7	278,385.2
	Feb.	1,259.0	11,242.3	-	12,501.3	278,948.5	16,067.0	3,813.4	536,729.0	1,082.0	557,691.3	280,821.3

Source: Finance Department SBP

2.8 Scheduled Bank's Consolidated Position

Based on weekly position Liabilities & Assets (All Banks)

(Million Rupees)

Financial Position	2006		2007		2008			
	Jun.	Dec.	Jun.	Dec.	Mar.	Apr.	May.	Jun.
ASSETS								
Cash & Balances With Treasury Banks	273,896	332,452	397,352	343,718	366,313	374,557	403,802	418,933
Balances With Other Banks	120,345	140,575	200,104	134,651	124,899	113,389	110,084	175,322
Lending To Financial Institutions	226,451	192,343	269,120	213,872	244,966	228,993	208,879	222,891
Investments - Net	794,584	775,546	1,115,913	1,210,920	1,107,028	1,060,154	975,761	1,007,529
Advances – Net of Provision	2,005,658	2,281,866	2,350,810	2,505,900	2,635,298	2,689,720	2,781,618	2,759,886
Gross Advances	2,127,388	2,409,478	2,484,495	2,651,173	2,812,732	2,870,619	2,964,509	2,943,319
Less: Provision for Non- Performing Advances	121,730	127,611	133,686	145,272	177,435	180,899	182,890	183,433
Operating Fixed Assets	72,659	107,745	127,031	146,135	183,539	199,810	200,529	202,262
Deferred Tax Assets	6,760	7,988	8,144	10,849	16,341	16,920	17,289	17,696
Other Assets	172,644	217,731	233,167	262,530	261,662	257,687	287,678	269,879
TOTAL ASSETS	3,672,997	4,056,246	4,701,641	4,828,576	4,940,045	4,941,230	4,985,640	5,074,397
LIABILITIES								
Bills Payable	47,282	55,177	56,992	69,242	63,154	57,618	58,440	64,752
Borrowings	361,080	420,080	497,065	439,335	456,102	428,801	433,961	389,585
Deposits and Other Accounts	2,786,731	2,999,895	3,460,811	3,565,537	3,628,142	3,650,050	3,696,208	3,832,454
Sub-ordinated Loans	21,721	26,967	27,488	27,171	37,582	41,506	41,608	41,169
Liabilities Against Assets Subject to Finance Lease	740	898	1,068	886	793	762	724	711
Other Liabilities	133,514	150,308	165,221	175,317	194,285	181,720	189,922	184,355
Deferred Tax Liabilities	8,554	7,357	8,700	9,921	12,360	14,407	13,605	13,568
TOTAL LIABILITIES	3,359,621	3,660,683	4,217,345	4,287,409	4,392,418	4,374,863	4,434,469	4,526,592
NET ASSETS	313,376	395,563	484,296	541,167	547,626	566,367	551,172	547,805
REPRESENTED BY:								
Paid up Capital / Head Office Capital Account	119,860	165,477	205,895	228,874	246,379	249,963	253,859	253,859
Reserves	89,780	102,928	129,050	108,921	130,699	131,606	127,971	127,816
Unappropriated / Unremitted Profit	33,428	63,520	68,707	115,538	89,138	91,304	94,396	92,790
Surplus/ (Deficit) On Revaluation Of Assets	70,308	63,638	80,645	87,835	81,410	93,493	74,944	73,339
TOTAL	313,376	395,563	484,296	541,167	547,626	566,367	551,172	547,805

Format of weekly statement of position has been redesigned from the month of July 05.

2.8 Scheduled Bank's Consolidated Position

Based on weekly position Liabilities & Assets (All Banks)

Financial Position	(Million Rupees)						
	2008						2009
	Jul.	Aug.	Sep.	Oct.	Nov.	Dec.	Jan. Feb.
ASSETS							
Cash & Balances With Treasury Banks	432,181	437,760	466,893	350,217	346,365	359,285	340,125 338,064
Balances With Other Banks	175,316	152,502	159,102	143,971	160,461	163,284	176,511 178,226
Lending To Financial Institutions	172,479	202,109	180,911	190,202	221,982	165,985	201,350 209,263
Investments - Net	1,060,396	1,030,846	930,875	921,043	929,016	980,984	1,030,607 1,094,731
Advances – Net of Provision	2,663,071	2,707,918	2,831,945	2,892,673	2,920,045	2,928,896	2,914,845 2,884,694
Gross Advances	2,848,844	2,899,138	3,027,122	3,092,451	3,131,312	3,141,028	3,127,435 3,099,980
Less: Provision for Non-Performing Advances	185,773	191,220	195,177	199,777	211,267	212,132	212,590 215,286
Operating Fixed Assets	209,625	209,059	211,751	213,577	218,119	222,072	222,168 222,375
Deferred Tax Assets	19,016	21,132	20,999	20,986	23,463	23,922	29,032 29,133
Other Assets	260,913	314,973	305,841	285,827	307,457	293,211	298,888 321,297
TOTAL ASSETS	4,992,997	5,076,298	5,108,316	5,018,496	5,126,908	5,137,638	5,213,526 5,277,783
LIABILITIES							
Bills Payable	57,197	76,053	70,969	65,839	61,605	64,580	58,134 59,501
Borrowings	364,722	377,992	434,061	424,428	446,815	426,065	442,365 433,501
Deposits and Other Accounts	3,777,585	3,788,611	3,781,524	3,681,110	3,756,126	3,801,411	3,852,605 3,897,208
Sub-ordinated Loans	40,630	40,892	40,975	41,143	41,006	38,895	38,934 38,978
Liabilities Against Assets Subject to Finance Lease	706	637	606	597	535	522	494 473
Other Liabilities	179,826	213,818	211,326	225,023	230,313	218,287	215,060 223,206
Deferred Tax Liabilities	12,963	12,906	12,336	11,736	11,023	9,350	9,944 9,960
TOTAL LIABILITIES	4,433,628	4,510,909	4,551,798	4,449,878	4,547,422	4,559,111	4,617,535 4,662,827
NET ASSETS	559,369	565,389	556,518	568,618	579,486	578,527	595,990 614,956
REPRESENTED BY:							
Paid up Capital / Head Office Capital Account	257,911	266,394	266,394	270,536	278,516	282,579	294,531 294,964
Reserves	129,263	136,219	136,258	136,676	140,287	142,935	146,488 147,236
Unappropriated / Unremitted Profit	107,654	109,327	100,569	108,158	111,708	109,957	120,166 122,591
Surplus/ (Deficit) On Revaluation Of Assets	64,540	53,449	53,298	53,248	48,975	43,057	34,805 50,165
TOTAL	559,369	565,389	556,518	568,618	579,486	578,527	595,990 614,956

Source: Off-Site Supervision Enforcement Department SBP

2.9 Scheduled Banks' Liquidity Position

All Banks¹

(Million Rupees)

Last Saturday		LIQUID LIABILITIES IN PAKISTAN			LIQUID ASSETS MAINTAINED IN PAKISTAN			
		Demand Liabilities	Time Liabilities	Total	Cash in Pakistan	Balance With SBP	Balance With Agents of SBP	Unencumbered Approved Securities ²
2004	Jun.	958,869	965,782	1,924,652	33,908	162,595	4,689	484,641
	Dec.	1,062,884	995,135	2,058,019	39,440	126,506	4,186	408,263
2005	Jun.	1,131,465	1,138,439	2,269,904	42,461	120,668	5,621	529,035
	Dec.	1,289,884	1,244,768	2,534,652	50,145	146,530	15,173	515,681
2006	Jun.	1,281,332	1,421,594	2,702,926	55,454	159,210	7,529	567,416
	Dec.	2,314,909	693,303	3,008,212	61,755	215,476	16,473	567,984
2007	Jun.	2,837,195	566,181	3,403,376	76,609	253,059	24,369	821,057
	Dec.	3,009,848	476,569	3,486,417	85,334	223,426	11,605	812,343
2008	Jun.	3,163,881	610,127	3,774,008	75,314	304,179	17,121	761,174
	Dec.	3,100,733	647,571	3,748,304	92,704	183,106	13,033	738,076
2008	Jan.	2,987,951	495,691	3,483,642	71,209	221,509	9,019	839,135
	Feb.	2,996,277	513,613	3,509,890	67,038	249,753	8,359	792,137
	Mar.	3,014,867	541,722	3,556,589	65,052	260,815	9,361	761,002
	Apr.	3,007,245	558,280	3,565,525	66,793	265,356	9,793	731,904
	May.	3,041,693	567,121	3,608,814	71,994	281,310	14,564	661,869
	Jun.	3,163,881	610,127	3,774,008	75,314	304,179	17,121	761,174
	Jul.	3,051,562	605,236	3,656,798	72,171	290,295	10,064	789,307
	Aug.	3,093,817	613,923	3,707,740	75,271	285,137	11,599	759,058
	Sep.	3,045,834	625,490	3,671,324	81,593	310,176	10,563	640,698
	Oct.	2,955,821	637,489	3,593,310	79,294	186,692	13,994	644,100
	Nov.	3,050,910	649,791	3,700,701	93,518	175,452	12,846	671,941
	Dec.	3,100,733	647,571	3,748,304	92,704	183,106	13,033	738,076
2009	Jan.	3,118,464	663,633	3,782,097	78,909	170,943	14,599	803,400

2.9 Scheduled Banks' Liquidity Position

All Banks¹

(Million Rupees)

(million Rupees)

Last Saturday		LIQUID ASSETS MAINTAINED IN PAKISTAN					Minimum of Assets required to be held under Section 29 of the Banking Companies Ordinance	Excess of Assets being held over the minimum required under Section 29 of the Banking Companies Ordinance
		Foreign Banks Deposits with SBP under section 13(3) of the Banking Companies Ordinance			Share Capital M F B	Total		
		Cash	Unencumbered Approved Securities ²	Foreign Currency				
2004	Jun.	190	3,601	10,341	1,705	701,670	382,784	318,886
	Dec.	60	129	14,280	1,705	594,569	408,376	186,193
2005	Jun.	60	4,239	15,919	1,675	719,678	450,694	268,984
	Dec.	156	4,020	17,660	1,705	751,070	503,471	247,599
2006	Jun.	156	4,014	19,172	1,705	814,656	537,716	276,940
	Dec.	156	3,981	13,524	1,685	881,034	719,116	161,918
2007	Jun.	0	727	13,397	1,655	1,190,873	821,095	369,778
	Dec.	0	0	10,867	1,658	1,145,233	828,870	316,363
2008	Jun.	0	0	12,651	1,658	1,172,097	990,894	181,203
	Dec.	0	5,018	18,512	1,658	1,052,107	735,487	316,620
2008	Jan.	0	0	11,318	1,658	1,153,848	826,986	326,862
	Feb.	0	0	11,318	1,658	1,130,264	862,262	268,002
	Mar.	0	0	11,330	1,658	1,109,218	871,631	237,587
	Apr.	0	0	12,651	1,658	1,088,155	872,226	215,929
	May.	0	0	12,651	1,658	1,044,046	948,559	95,487
	Jun.	0	0	12,651	1,658	1,172,097	990,894	181,203
	Jul.	0	0	12,702	1,658	1,176,197	964,746	211,451
	Aug.	0	0	12,702	1,658	1,145,425	971,664	173,761
	Sep.	0	0	12,702	1,658	1,057,390	959,998	97,392
	Oct.	0	0	15,599	2,202	941,881	739,096	202,786
	Nov.	0	5,018	16,344	1,976	977,095	724,113	252,982
	Dec.	0	5,018	18,512	1,658	1,052,107	735,487	316,620
2009	Jan.	0	5,018	19,224	1,658	1,093,751	739,445	354,306

1 Excluding Indian Banks

Source: Off-Site Supervision Enforcement Department SBP

2 Valued at a price not exceeding current market price

Note : Figures of Demand and Time Liabilities of Scheduled Banks shown in this table may not tally with the corresponding provisional figures appearing in the table 2.7

MFB : Macro Finance Bank (Khushali Bank)

2.10 NBFCs Consolidated Financial Position

(Million Rupees)

Assets/ Liabilities	Mar-08 ^P			Jun-08 ^P		
	DFIs	NBFCs	Total	DFIs	NBFCs	Total
1. Currency and Deposits	23,072	81,827	104,899	22,657	83,329	105,986
a. Currency	-	815	815	-	1,139	1,139
b. Transferable Deposits	12,359	55,658	68,017	5,068	51,053	56,121
c. Restricted Deposits	90	3,146	3,236	125	3,864	3,989
d. Other Deposits	10,623	22,208	32,831	17,464	27,273	44,737
2. Investment in securities other than shares	21,368	54,365	75,733	22,614	59,667	82,281
a. Short-term	7,047	9,250	16,297	8,591	6,015	14,606
b. Long-term	14,321	45,115	59,436	14,023	53,652	67,675
3. Loans extended (Advances)	47,315	136,583	183,898	44,075	133,249	177,324
a. Short-term	14,844	54,915	69,759	14,137	48,981	63,118
b. Long-term	32,471	81,668	114,139	29,938	84,268	114,206
4. Investment in shares	21,540	215,380	236,920	16,189	185,551	201,740
a. Quoted	19,778	212,195	231,973	14,255	182,615	196,870
b. Non quoted	1,762	3,185	4,947	1,934	2,936	4,870
5. Insurance Technical Reserve	-	-	-	-	-	-
a. Life	-	-	-	-	-	-
b. Non-life	-	-	-	-	-	-
6. Financial Derivatives	-	238	238	-	187	187
7. Other accounts receivable	3,846	31,077	34,923	4,438	30,323	34,761
8. Non-financial assets	3,001	14,683	17,684	3,031	13,004	16,035
a. Produced assets	2,885	7,831	10,716	2,912	7,877	10,789
i. Fixed assets	2,885	7,168	10,053	2,912	7,312	10,224
ii. Inventories	-	153	153	-	172	172
iii. Valuables	-	-	-	-	-	-
iv. Other produced assets	-	510	510	-	393	393
b. Non-produced assets	116	6,852	6,968	119	5,127	5,246
i. Land	115	2,979	3,094	119	1,019	1,138
ii. Other-non-produced assets	1	3,873	3,874	-	4,108	4,108
Total Assets/ Liabilities	120,142	534,153	654,295	113,006	505,310	618,316
1. Deposits	13,277	30,542	43,819	13,304	34,859	48,163
a. Restricted deposits	202	10,586	10,788	206	11,792	11,998
b. Other deposits	13,075	19,956	33,031	13,098	23,067	36,165
2. Securities other than shares (bonds/debentures etc)	4,917	16,110	21,027	3,417	17,076	20,493
a. Short-term	167	2,673	2,840	167	3,082	3,249
b. long-term	4,750	13,437	18,187	3,250	13,994	17,244
3. Loans (Borrowings)	39,592	53,756	93,348	42,632	57,030	99,662
a. Short-term	19,748	24,855	44,603	20,363	27,362	47,725
b. Long-term	19,844	28,901	48,745	22,269	29,668	51,937
4. Financial Derivatives	-	(63)	(63)	-	(75)	(75)
5. Other accounts payable	8,663	42,434	51,097	10,209	39,504	49,713
6. Shares and other equity	53,693	391,374	445,067	43,445	356,916	400,361
a. Quoted	2,000	217,202	219,202	2,000	183,646	185,646
b. Non quoted	31,293	44,542	75,835	31,293	68,410	99,703
c. Retained earnings	3,608	63,773	67,381	(4,694)	58,567	53,873
d. Current year result	6,237	20,096	26,333	6,453	9,326	15,779
e. General and special reserves	8,461	38,103	46,564	9,097	33,031	42,128
f. Valuation adjustments	2,094	7,658	9,752	(704)	3,936	3,232

2.10 NBFCs Consolidated Financial Position

Assets/ Liabilities	(Million Rupees)					
	Sep-08 ^P			Dec-08 ^P		
	DFIs	NBFCs	Total	DFIs	NBFCs	Total
1. Currency and Deposits	13,555	90,799	104,354	14,442	72,731	87,173
a. Currency	1	656	657	1	845	846
b. Transferable Deposits	2,033	51,656	53,688	6,684	45,670	52,354
c. Restricted Deposits	122	8,484	8,605	129	5,655	5,784
d. Other Deposits	11,399	30,003	41,403	7,629	20,561	28,190
2. Investment in securities other than shares	22,156	62,071	84,227	23,358	57,277	80,635
a. Short-term	8,853	7,935	16,787	8,848	6,301	15,150
b. Long-term	13,303	54,136	67,440	14,510	50,976	65,485
3. Loans extended (Advances)	42,115	116,790	158,905	44,582	110,021	154,603
a. Short-term	11,481	33,145	44,625	12,802	30,561	43,363
b. Long-term	30,635	83,645	114,280	31,780	79,460	111,240
4. Investment in shares	15,638	141,038	156,677	11,167	109,686	120,853
a. Quoted	13,135	137,789	150,924	9,272	105,568	114,841
b. Non quoted	2,504	3,249	5,753	1,895	4,117	6,012
5. Insurance Technical Reserve	-	-	-	-	-	-
a. Life	-	-	-	-	-	-
b. Non-life	-	-	-	-	-	-
6. Financial Derivatives	-	7	7	-	21	21
7. Other accounts receivable	3,485	26,485	29,971	5,872	44,716	50,588
8. Non-financial assets	3,290	12,433	15,723	3,396	12,699	16,096
a. Produced assets	3,157	8,579	11,736	3,259	8,857	12,116
i. Fixed assets	3,147	7,857	11,004	3,247	8,147	11,394
ii. Inventories	-	200	200	-	202	202
iii. Valuables	-	-	-	-	-	-
iv. Other produced assets	10	522	532	11	508	519
b. Non-produced assets	133	3,855	3,988	137	3,842	3,980
i. Land	10	925	935	10	999	1,009
ii. Other-non-produced assets	123	2,930	3,053	127	2,843	2,970
Total Assets/ Liabilities	100,240	449,624	549,864	102,817	407,151	509,968
1. Deposits	7,965	27,785	35,749	7,234	22,775	30,008
a. Restricted deposits	200	9,349	9,550	183	5,545	5,729
b. Other deposits	7,764	18,436	26,200	7,051	17,229	24,280
2. Securities other than shares (bonds/debentures etc)	2,650	16,563	19,213	2,650	23,891	26,541
a. Short-term	-	2,760	2,760	-	2,875	2,875
b. Long-term	2,650	13,803	16,453	2,650	21,016	23,666
3. Loans (Borrowings)	38,539	55,695	94,233	35,139	58,459	93,598
a. Short-term	16,363	27,293	43,657	15,085	30,311	45,396
b. Long-term	22,176	28,401	50,577	20,053	28,149	48,202
4. Financial Derivatives	-	-	-	-	-	-
5. Other accounts payable	8,822	44,219	53,042	7,499	48,613	56,112
6. Shares and other equity	42,265	305,362	347,626	50,295	253,413	303,708
a. Quoted	2,000	172,861	174,861	3,229	149,779	153,008
b. Non quoted	32,293	64,490	96,783	39,521	55,450	94,972
c. Retained earnings	(5,181)	47,370	42,189	(2,081)	45,652	43,571
d. Current year result	4,934	(13,360)	(8,426)	2,999	(28,774)	(25,774)
e. General and special reserves	9,199	34,663	43,862	9,112	33,432	42,545
f. Valuation adjustments	(980)	(663)	(1,643)	(2,486)	(2,127)	(4,613)

NBFCs Non Bank Financial Companies
DFIs Development Finance Institutions

2.11 Classification of Deposits with NBFCs

(Million Rupees)

Sector	Sep-08 ^P			Dec-08 ^P		
	Depository	Non-Depository	Total	Depository	Non-Depository	Total
1 Non-financial Corporations	12,347	316	12,663	11,758	322	12,080
i Public	1,667	91	1,759	1,840	95	1,935
ii Private	10,680	224	10,904	9,918	227	10,145
2 Financial Corporations	14,032	956	14,988	9,880	931	10,811
i Central Bank	-	-	-	-	-	-
ii Deposit money institutions	9,843	138	9,981	5,957	113	6,070
ii Other deposit accepting institutions	680	818	1,498	834	818	1,652
iv Financial intermediaries	2,344	-	2,344	1,799	-	1,799
v Financial auxiliaries	157	-	157	175	-	175
vi Insurance and pension funds	1,009	-	1,009	1,114	-	1,114
3 Central Government	2,070	-	2,070	1,993	-	1,993
4 Provincial Governments	7	-	7	7	7	7
5 Local Governments	-	-	-	0	-	-
6 Household	5,990	4	5,994	4,919	-	4,919
7 Non-profit Institutions (NPIs) Serving Households	13	-	13	9	-	9
8 Non-residents	5	-	5	5	-	5
9 Foreign Currency	10	-	10	186	-	186
Total	34,473	1,277	35,749	28,756	1,253	30,008

2.12 Classification of NBFC's Loans Extended(Advances)

(Million Rupees)

Sector	Sep-08 ^P			Dec-08 ^P		
	Depository	Non-Depository	Total	Depository	Non-Depository	Total
1 Non-financial corporations	78,466	9,461	87,927	73,301	10,694	83,995
i Public	876	393	1,269	1,969	350	2,319
ii Private	77,589	9,068	86,658	71,331	10,344	81,676
2 Financial Corporations	11,707	14,726	26,432	9,722	14,123	23,846
i Central Bank	-	-	-	-	-	-
ii Deposit money institutions	3,237	1,176	4,414	4,606	2,595	7,201
ii Other deposit accepting institutions	6,118	4,311	10,429	3,721	3,700	7,421
iv Financial intermediaries	970	1,030	2,001	1,148	1,209	2,357
v Financial auxiliaries	1,352	8,204	9,557	207	6,615	6,822
vi Insurance and pension funds	29	4	33	42	4	45
3 Central Government	-	20	20	-	-	-
4 Provincial Governments	-	-	-	-	-	-
5 Local Governments	-	-	-	-	-	-
6 Household	12,743	11,850	24,593	11,713	12,341	24,054
7 Non-profit Institutions (NPIs) Serving Households	19	-	19	19	-	19
8 Non-Residents	-	-	-	-	-	-
9 Bills purchased and discounted (inland bills)	-	26	26	-	25	25
10 Other Advances and Financial Leases	9,909	9,979	19,888	11,619	11,044	22,664
Total	112,844	46,062	158,905	106,375	48,228	154,603

2.13 Classification of NBFC's Investments in Securities and Shares

(Million Rupees)

Securities/Shares	Sep-08 ^P			Dec-08 ^P		
	Depository	Non-Depository	Total	Depository	Non-Depository	Total
A. Securities	28,282	55,945	84,227	29,092	51,543	80,635
1 Non-financial Corporations	13,970	36,440	50,410	10,129	31,625	41,754
i Public	5,026	6,262	11,289	131	6,308	6,439
ii Private	8,944	30,178	39,122	9,998	25,317	35,315
2 Financial Corporations	5,079	16,644	21,723	5,991	16,287	22,279
i Central Bank	-	-	-	-	-	-
ii Deposit money institutions	3,499	8,715	12,213	3,583	8,187	11,771
ii Other deposit accepting institutions	1,087	3,140	4,226	2,085	3,400	5,485
iv Financial intermediaries	494	4,789	5,283	323	4,700	5,023
v Financial auxiliaries	-	-	-	-	-	-
vi Insurance and pension funds	-	-	-	-	-	-
3 Central Government	9,199	2,730	11,930	12,939	3,516	16,456
4 Provincial Governments	-	-	-	-	-	-
5 Local Governments	-	-	-	-	-	-
6 Household	-	-	-	-	-	-
7 Non-profit institutions (NPIs) Serving Households	-	-	-	-	-	-
8 Non-Residents	-	-	-	-	-	-
9 Foreign Currency	33	131	164	33	114	147
B. Shares	23,099	133,577	156,677	19,264	101,589	120,853
1 Non-financial Corporations	14,398	118,227	132,625	11,783	89,041	100,824
i Public	4,358	100,657	105,016	3,221	72,864	76,085
ii Private	10,040	17,570	27,610	8,561	16,177	24,739
2 Financial Corporations	8,286	15,188	23,474	7,089	12,417	19,506
i Central Bank	-	-	-	-	-	-
ii Deposit money institutions	3,333	4,177	7,510	2,255	3,198	5,453
ii Other deposit accepting institutions	2,022	2,240	4,262	1,763	2,217	3,980
iv Financial intermediaries	2,432	7,436	9,867	2,306	5,848	8,154
v Financial auxiliaries	146	2	148	233	2	236
vi Insurance and pension funds	354	1,333	1,687	532	1,152	1,684
3 Central Government	-	-	-	-	-	-
4 Provincial Governments	-	-	-	-	-	-
5 Local Governments	-	-	-	-	-	-
6 Household	-	-	-	-	-	-
7 Non-profit institutions (NPIs) Serving Households	-	-	-	-	-	-
8 Non-residents	415	162	577	392	131	523
Total (A+B)	51,381	189,523	240,904	48,356	153,132	201,488

2.14 Currency in Circulation

(Million Rupees)

END OF PERIOD		Subsidiary Coins	One Rupee Coins and above	Five Rupee Bills & above	Total (1+2+3)	Held by Banking Department of SBP	Held by Issue Department of SBP	Currency In tills of Scheduled Banks	Currency In Circulation (4-5-6-7)
		1	2	3	4	5	6	7	8
2004	Jun.	664	4,941	611,904	617,508	161	2,799	36,432	578,116
	Dec.	667	5,574	691,072	697,313	126	3,068	38,836	655,283
2005	Jun.	667	6,093	705,720	712,480	146	2,961	43,472	665,901
	Dec.	667	6,618	769,617	776,902	157	2,470	42,527	731,749
2006	Jun.	667	6,931	784,236	791,834	139	2,865	48,439	740,391
	Dec.	667	6,933	917,809	925,408	141	2,640	48,367	874,260
2007	Jun.	667	7,441	893,293	901,401	136	3,012	58,072	840,181
	Dec.	667	7,461	1,070,960	1,079,088	156	2,730	68,371	1,007,831
2008	Jun.	667	7,667	1,045,857	1,054,191	182	2,718	68,966	982,325
	Dec.	665	7,696	1,205,289	1,213,650	207	2,575	86,649	1,124,219
2008	Feb.	667	7,428	1,050,242	1,058,337	130	2,687	54,429	1,001,090
	Mar.	667	7,501	1,040,450	1,048,617	196	2,659	63,761	982,001
	Apr.	667	7,457	1,044,473	1,052,596	146	2,632	56,757	993,061
	May.	667	7,471	1,051,807	1,059,944	166	2,586	59,380	997,813
	Jun.	667	7,667	1,045,857	1,054,191	182	2,718	68,966	982,325
	Jul.	665	7,129	1,065,303	1,073,097	110	2,692	59,907	1,010,388
	Aug.	665	7,646	1,070,325	1,078,636	161	2,665	57,930	1,017,880
	Sep.	665	7,653	1,168,082	1,176,401	168	2,629	66,255	1,107,349
	Oct.	665	7,596	1,185,624	1,193,885	111	2,614	66,315	1,124,845
	Nov.	665	7,624	1,188,079	1,196,368	139	2,596	72,502	1,121,131
	Dec.	665	7,696	1,205,289	1,213,650	207	2,575	86,649	1,124,219
	Jan.	665	7,639	1,186,535	1,194,839	151	2,565	64,773	1,127,350
	Feb. ^P	665	7,675	1,190,890	1,199,231	187	2,556	64,799	1,131,689

Note The quarter end data relate to last working day whereas monthly data are of last Saturday of the month . Totals may not tally due to separate rounding off

2.15 Government Budgetary Borrowing from Banks

(Million Rupees)

Item	Stocks		Monetary Impact During	
	30-Jun-08	30-Jun-07	Ist July 08 to 28 th Feb. 2009	Ist July 07 to 1 st Mar. 2008
1. Central Government (a+b)	1,577,064	1,014,152	393,953	317,585
a. Scheduled Banks	509,710	617,528	69,920	(37,515)
T-Bills and Securities	732,996	830,347	80,401	(4,987)
Less:				
Government Deposits	223,286	212,819	10,481	32,528
b. State Bank	1,067,354	396,624	324,033	355,100
T-bills and Securities etc.	1,074,488	461,619	313,384	310,927
Debtor Balances (Excluding Zakat Fund)	0	0	0	0
Less:				
Government Deposits (Excluding Zakat and Privatization Fund)	20,748	78,430	(10,647)	(44,173)
Others	(13,614)	(13,435)	(2)	0
2. Provincial Governments (c+d)	(212,460)	(204,099)	(31,533)	(11,161)
c. Scheduled Banks	(178,821)	(152,466)	(7,060)	(15,388)
Government and Others	1,100	1,100	(39)	0
Less:				
Government Deposits	179,921	153,566	7,021	15,388
d. State Bank	(33,639)	(51,633)	(24,473)	4,227
Government Securities	0	0	0	0
Debtor Balances (Excluding Zakat Fund)	18,719	10,821	(1,154)	4,211
Less:				
Government Deposits (Excluding Zakat Fund)	52,357	62,454	23,320	(16)
Net Budgetary Borrowing from the Banking System	1,364,604	810,053	362,420	306,424

2.16 Government Borrowing for Commodity Operations

(Million Rupees)

Commodity	Stocks		Monetary Impact During	
	30-Jun-08	30-Jun-07	Ist July 08 to 28 th Feb-09	Ist July 07 to 1 st Mar-08
Rice	0	2,224	14,001	(2,215)
Wheat	86,154	62,049	1,543	(19,952)
Sugar	29,813	25,285	(4,389)	1,355
Fertilizer	7,491	6,227	2882	784
Seeds	0	95	0	(95)
Oilseeds	156	0	(156)	0
Pulses	0	106	1,006	41
Edible Oil	10	1,266	50	(1,266)
Black Mash	0	57	0	(57)
Chillies	0	0	0	0
S. Meal	0	27	0	(27)
Gram	2,657	0	(2,657)	3,263
Onion	0	50	0	(50)
Potatoes	0	0	0	0
Cotton	1,239	1,166	736	41
Total	127,520	98,552	13,016	(18,178)