

## 2.1 Pakistan Monetary Survey

### (Depository Corporation Survey)

(Million Rupees)

Description	2005		2006		2007			
	Jun.	Dec.	Jun.	Dec.	Jun.	Jul.	Aug.	Sep.
<b>Net Foreign Assets</b>	<b>687,363</b>	<b>621,354</b>	<b>786,458</b>	<b>775,042</b>	<b>1,063,417</b>	<b>1,049,940</b>	<b>1,032,279</b>	<b>1,056,074</b>
Claims on non-residents	947,484	877,489	1,039,013	1,029,203	1,317,429	1,302,860	1,284,544	1,310,862
<i>Less: Liabilities to non-residents</i>	260,121	256,135	252,555	254,161	254,012	252,920	252,265	254,788
<b>Domestic Credit</b>	<b>2,517,385</b>	<b>2,887,520</b>	<b>3,010,923</b>	<b>3,300,164</b>	<b>3,517,670</b>	<b>3,502,991</b>	<b>3,570,461</b>	<b>3,560,561</b>
<b>Net claims on General government <sup>1</sup></b>	<b>713,755</b>	<b>781,182</b>	<b>802,948</b>	<b>826,385</b>	<b>898,319</b>	<b>935,608</b>	<b>995,225</b>	<b>960,474</b>
<b>Net claims on Central government</b>	<b>808,055</b>	<b>882,427</b>	<b>918,571</b>	<b>961,155</b>	<b>1,062,740</b>	<b>1,112,998</b>	<b>1,175,219</b>	<b>1,150,410</b>
Claims on Central Govt.	998,713	1,129,834	1,176,896	1,202,688	1,368,149	1,379,508	1,448,799	1,425,285
<i>Less: Liabilities to Central Govt.</i>	190,658	247,407	258,325	241,533	305,409	266,510	273,580	274,875
<b>Net claims on Provincial governments <sup>2</sup></b>	<b>(94,300)</b>	<b>(101,245)</b>	<b>(115,623)</b>	<b>(134,770)</b>	<b>(164,421)</b>	<b>(177,390)</b>	<b>(179,994)</b>	<b>(189,936)</b>
Claims on Provincial Govts.	44,556	49,486	69,790	41,880	51,711	51,175	49,085	48,820
<i>Less: Liabilities to Provincial Govts.</i>	138,856	150,731	185,413	176,650	216,132	228,565	229,079	238,756
<b>Claims on Private sectors</b>	<b>1,600,931</b>	<b>1,861,899</b>	<b>1,957,418</b>	<b>2,198,651</b>	<b>2,294,800</b>	<b>2,254,310</b>	<b>2,272,801</b>	<b>2,292,848</b>
<b>Claims on NFPSEs</b>	<b>106,431</b>	<b>124,893</b>	<b>136,209</b>	<b>136,126</b>	<b>164,140</b>	<b>156,659</b>	<b>154,904</b>	<b>163,092</b>
<b>Claims on NBFIs Depository &amp; Non</b>	<b>96,268</b>	<b>119,546</b>	<b>114,348</b>	<b>139,002</b>	<b>160,411</b>	<b>156,414</b>	<b>147,531</b>	<b>144,147</b>
<b>Broad Money (M2)</b>	<b>2,965,174</b>	<b>3,201,675</b>	<b>3,407,794</b>	<b>3,665,543</b>	<b>4,052,986</b>	<b>3,990,529</b>	<b>4,061,982</b>	<b>4,115,021</b>
Narrow Money (M1)	2,512,214	2,474,573	2,720,685	2,854,792	3,155,635	3,098,523	3,141,404	3,169,022
Currency outside Depository Corporations (Banks)	666,414	732,011	741,349	874,597	840,418	836,830	839,877	875,348
Transferable/Demand deposits	1,845,800	1,742,562	1,979,336	1,980,195	2,315,217	2,261,693	2,301,527	2,293,674
Time Deposit	452,960	727,102	687,109	810,751	897,351	892,006	920,578	945,999
<b>Public sector funds/deposits (SBP)</b>	<b>23,714</b>	<b>23,028</b>	<b>23,225</b>	<b>23,419</b>	<b>23,478</b>	<b>23,478</b>	<b>23,478</b>	<b>23,478</b>
<b>Counterpart funds</b>	<b>539</b>	<b>525</b>	<b>546</b>	<b>512</b>	<b>519</b>	<b>519</b>	<b>521</b>	<b>521</b>
<b>Long –Term Foreign Liabilities</b>	<b>110</b>	<b>97</b>	<b>84</b>	<b>65</b>	<b>56</b>	<b>50</b>	<b>50</b>	<b>50</b>
<b>Other items (Net) <sup>3</sup></b>	<b>215,208</b>	<b>283,549</b>	<b>365,737</b>	<b>385,672</b>	<b>504,049</b>	<b>538,353</b>	<b>516,710</b>	<b>477,566</b>
Other liabilities	684,454	778,772	887,273	1,020,479	1,219,889	1,194,910	1,104,922	1,095,736
<i>less: Other assets</i>	469,246	495,223	521,536	634,807	715,840	656,557	588,212	618,170
<b>Memorandum items:</b>								
Bank Clearings	1,416,613	1,656,863	1,854,688	1,888,611	2,286,183	2,026,532	1,729,731	1,581,359
Post Office Savings	50,661	39,257	61,418	52,977	67,054	64,711	64,712	64,816

Note: Pakistan Monetary Survey is the analytical accounts of State Bank of Pakistan and Scheduled banks based on monthly reporting closely in the line with MFSM. Data relates to last working day of the month.

## 2.1 Pakistan Monetary Survey (Depository Corporation Survey)

(Million Rupees)

Description	2007			2008				
	Oct.	Nov.	Dec.	Jan.	Feb.	Mar.	Apr.	May.
<b>Net Foreign Assets</b>	<b>1,060,874</b>	<b>983,638</b>	<b>951,836</b>	<b>921,569</b>	<b>886,033</b>	<b>841,871</b>	<b>781,025</b>	<b>735,199</b>
Claims on non-residents	1,315,746	1,245,568	1,225,442	1,184,680	1,148,896	1,114,011	1,055,731	813,329
<i>Less: Liabilities to non-residents</i>	254,872	261,930	273,606	263,111	262,863	272,140	274,706	78,130
<b>Domestic Credit</b>	<b>3,621,748</b>	<b>3,821,106</b>	<b>4,012,716</b>	<b>4,021,338</b>	<b>4,137,011</b>	<b>4,224,425</b>	<b>4,331,532</b>	<b>4,394,079</b>
<b>Net claims on General government <sup>1</sup></b>	<b>960,130</b>	<b>1,050,574</b>	<b>1,100,352</b>	<b>1,110,957</b>	<b>1,169,438</b>	<b>1,203,358</b>	<b>1,258,001</b>	<b>1,330,484</b>
<b>Net claims on Central Govt.</b>	<b>1,137,354</b>	<b>1,228,232</b>	<b>1,256,864</b>	<b>1,315,863</b>	<b>1,382,108</b>	<b>1,432,935</b>	<b>1,481,885</b>	<b>1,532,066</b>
Claims on Central Govt.	1,428,244	1,520,160	1,573,468	1,622,614	1,676,073	1,734,361	1,778,672	1,816,376
<i>Less: Liabilities to Central Govt.</i>	290,890	291,928	316,604	306,751	293,965	301,426	296,787	284,310
<b>Net claims on Provincial governments <sup>2</sup></b>	<b>(177,224)</b>	<b>(177,658)</b>	<b>(156,512)</b>	<b>(204,906)</b>	<b>(212,670)</b>	<b>(229,577)</b>	<b>(223,884)</b>	<b>(201,582)</b>
Claims on Provincial Govts.	43,701	41,596	39,690	31,764	25,922	23,270	27,767	61,516
<i>Less: Liabilities to Provincial Govts.</i>	220,925	219,254	196,202	236,670	238,592	252,847	251,651	263,098
<b>Claims on Private sectors</b>	<b>2,336,761</b>	<b>2,425,920</b>	<b>2,562,819</b>	<b>2,582,993</b>	<b>2,615,140</b>	<b>2,662,846</b>	<b>2,706,705</b>	<b>2,685,960</b>
<b>Claims on NFPSEs</b>	<b>159,620</b>	<b>170,432</b>	<b>176,606</b>	<b>171,470</b>	<b>196,720</b>	<b>195,580</b>	<b>209,783</b>	<b>228,266</b>
<b>Claims on NBFIs Depository &amp; Non Depository</b>	<b>165,237</b>	<b>174,180</b>	<b>172,939</b>	<b>155,918</b>	<b>155,713</b>	<b>162,641</b>	<b>157,043</b>	<b>149,369</b>
<b>Broad Money (M2)</b>	<b>4,127,079</b>	<b>4,220,242</b>	<b>4,387,940</b>	<b>4,304,169</b>	<b>4,357,125</b>	<b>4,398,125</b>	<b>4,397,120</b>	<b>4,470,905</b>
Narrow Money (M1)	3,194,759	3,275,890	3,403,647	3,326,310	3,355,131	3,365,665	3,363,478	3,414,007
Currency outside Depository Corporations (Banks)	908,288	939,300	1,008,186	979,019	988,874	982,106	986,204	998,151
Transferable/Demand deposits	2,286,471	2,336,590	2,395,461	2,347,291	2,366,257	2,383,559	2,377,274	2,415,856
Time Deposit	932,320	944,352	984,293	977,859	1,001,994	1,032,460	1,033,642	1,056,898
<b>Public sector funds/deposits (SBP)</b>	<b>23,478</b>	<b>23,486</b>	<b>23,504</b>	<b>23,504</b>	<b>23,504</b>	<b>23,504</b>	<b>23,504</b>	<b>23,597</b>
<b>Counterpart funds</b>	<b>521</b>	<b>523</b>	<b>531</b>	<b>531</b>	<b>533</b>	<b>533</b>	<b>533</b>	<b>535</b>
<b>Long –Term Foreign Liabilities</b>	<b>49</b>	<b>48</b>	<b>39</b>	<b>39</b>	<b>39</b>	<b>35</b>	<b>3,172</b>	<b>3,364</b>
<b>Other items (Net) <sup>3</sup></b>	<b>531,499</b>	<b>560,446</b>	<b>552,533</b>	<b>614,664</b>	<b>641,839</b>	<b>644,102</b>	<b>688,230</b>	<b>630,879</b>
Other liabilities	1,141,689	1,163,549	1,226,455	1,217,264	1,283,148	1,307,346	1,304,765	1,328,346
<i>less: Other assets</i>	610,190	603,103	673,922	602,600	641,309	663,244	616,535	697,467
<b>Memorandum items:</b>								
Bank Clearings	1,503,547	1,622,994	1,598,221	1,659,650	1,487,362	1,828,075	1,816,075	2,043,153
Post Office Savings	64,320	61,605	61,518	63,002	65,178	66,509	69,902	69,902

1. General Government includes Central Government and Provincial Governments

2. Provincial Governments include Provincial Governments and Local /city Governments

3. *Other Liabilities* include Liabilities to scheduled banks, paid up capital and reserve accounts, Other liabilities from SBP and liabilities to SBP from scheduled banks. *Other assets* include claims on banks, other assets from SBP and claims on SBP from scheduled banks.

## 2.2 Analytical Accounts of State Bank of Pakistan

### (Central Bank Survey)

(Million Rupees)

Description	2005		2006		2007			
	Jun.	Dec.	Jun.	Dec.	Jun.	Jul.	Aug.	Sep.
<b>Net Foreign Assets</b>	<b>555,306</b>	<b>523,044</b>	<b>639,843</b>	<b>642,680</b>	<b>867,581</b>	<b>861,596</b>	<b>864,727</b>	<b>878,471</b>
<b>Claims on non-residents (Foreign Assets)</b>	<b>784,327</b>	<b>747,854</b>	<b>864,062</b>	<b>865,562</b>	<b>1,089,835</b>	<b>1,084,787</b>	<b>1,088,496</b>	<b>1,105,845</b>
a) Monetary Gold Coin and Bullion	54,746	54,746	77,558	77,558	82,598	84,433	85,737	94,754
b) Holding of SDRs	13,569	12,915	13,124	13,122	12,802	12,904	12,891	13,126
c) Foreign Currency	767	3,176	3,126	2,792	3,510	3,441	3,964	3,018
d) Securities other than shares (Foreign)	472,514	414,829	555,312	549,365	685,469	648,610	698,437	690,290
e) Deposits	139,513	167,965	121,824	128,434	152,719	187,611	172,472	183,924
f) Loans	-	-	-	-	-	-	-	-
g) Financial Derivatives	-	-	-	-	-	-	-	-
h) Others	103,218	94,223	93,118	94,291	152,737	147,788	114,995	120,733
<i>Of which Quota - IMF</i>	90,312	93,254	92,156	91,315	94,817	95,607	95,607	97,690
<b>Less: Liabilities to non-residents (Foreign Liab.)</b>	<b>229,021</b>	<b>224,810</b>	<b>224,219</b>	<b>222,882</b>	<b>222,254</b>	<b>223,191</b>	<b>223,769</b>	<b>227,374</b>
a) Deposits	42,066	42,036	42,207	42,671	42,384	42,349	42,602	42,562
b) Securities other than (N.N.N.I.B Securities)	90,301	85,268	85,259	83,581	81,962	82,585	82,585	84,402
c) Financial Derivatives	-	-	-	-	-	-	-	-
d) Loans (IMF Loan 1 & PRGF and SFD)	96,654	97,506	96,753	96,630	97,908	98,257	98,582	100,410
e) Other (IMF Administration Charges)	..	-	-	-	-	-	-	-
<b>Claims on other Depository Corporations (Banks)</b>	<b>210,377</b>	<b>214,573</b>	<b>218,359</b>	<b>275,936</b>	<b>271,594</b>	<b>268,089</b>	<b>206,256</b>	<b>229,848</b>
a) Loans and Advances	181,987	186,183	193,579	250,716	253,419	250,505	188,672	212,664
b) Internal Bills Purchased and Discounted	116	116	116	116	116	116	116	116
c) Investment in Share Capital	28,274	28,274	24,664	25,104	18,059	17,468	17,468	17,068
<b>Net claims on General government <sup>1</sup></b>	<b>248,818</b>	<b>390,412</b>	<b>383,912</b>	<b>461,811</b>	<b>325,360</b>	<b>320,650</b>	<b>364,575</b>	<b>311,389</b>
<b>Net claims on Central Govt.</b>	<b>283,636</b>	<b>434,036</b>	<b>434,153</b>	<b>505,632</b>	<b>377,106</b>	<b>377,887</b>	<b>427,363</b>	<b>373,875</b>
<b>Claims on Central Govt.</b>	<b>347,862</b>	<b>542,609</b>	<b>525,082</b>	<b>575,706</b>	<b>469,696</b>	<b>424,037</b>	<b>472,503</b>	<b>423,569</b>
a) Securities	332,129	535,481	517,625	568,249	461,725	416,066	464,532	415,598
b) Other Claims	15,733	7,128	7,457	7,457	7,971	7,971	7,971	7,971
<b>Less: Liabilities to Central Government</b>	<b>64,226</b>	<b>108,573</b>	<b>90,929</b>	<b>70,074</b>	<b>92,590</b>	<b>46,150</b>	<b>45,140</b>	<b>49,694</b>
a) Deposits	64,226	108,573	90,929	70,074	92,590	46,150	45,140	49,694
b) Other Liabilities	-	-	-	-	-	-	-	-

Note: Analytical accounts are the statistical presentation of monetary statistics of State Bank of Pakistan based on monthly reporting closely in the line with MFSM.

## 2.2 Analytical Accounts of State Bank of Pakistan

(Central Bank Survey)

(Million Rupees)

Description	2005		2006		2007			
	Jun.	Dec.	Jun.	Dec.	Jun.	Jul.	Aug.	Sep.
<b>Net claims on Provincial governments <sup>2</sup></b>	<b>(34,818)</b>	<b>(43,624)</b>	<b>(50,241)</b>	<b>(43,821)</b>	<b>(51,746)</b>	<b>(57,237)</b>	<b>(62,788)</b>	<b>(62,486)</b>
<b>Claims on Provincial governments</b>	<b>10,814</b>	<b>14,503</b>	<b>16,404</b>	<b>6,560</b>	<b>10,820</b>	<b>10,893</b>	<b>8,827</b>	<b>11,533</b>
a) Securities	-	-	-	-	-	-	-	-
b) Other Claims	10,814	14,503	16,404	6,560	10,820	10,893	8,827	11,533
<b>Less: Liabilities to Provincial Govts.</b>	<b>45,632</b>	<b>58,127</b>	<b>66,645</b>	<b>50,381</b>	<b>62,566</b>	<b>68,130</b>	<b>71,615</b>	<b>74,019</b>
a) Deposits	45,632	58,127	66,645	50,381	62,566	68,130	71,615	74,019
b) Other Liabilities	-	-	-	-	-	-	-	-
<b>Claims on other sectors</b>	<b>16,927</b>	<b>15,415</b>	<b>15,889</b>	<b>17,819</b>	<b>16,187</b>	<b>16,167</b>	<b>16,048</b>	<b>16,376</b>
a) Other financial corporations	16,927	15,415	15,889	17,819	16,187	16,167	16,048	<b>16,376</b>
1) Loans and advances to NBFIs	15,254	13,742	14,216	16,146	14,074	14,054	13,935	13,862
2) Investment in NBFIs shares	1,673	1,673	1,673	1,673	2,113	2,113	2,113	2,514
b) Other resident sectors	-	-	-	-	-	-	-	-
<b>Monetary Base (Reserve Money)</b>	<b>909,013</b>	<b>985,352</b>	<b>1,001,334</b>	<b>1,191,780</b>	<b>1,210,429</b>	<b>1,184,706</b>	<b>1,165,801</b>	<b>1,213,586</b>
a) Currency in circulation (Currency outside Banks)	666,414	732,011	741,349	874,597	840,418	836,830	839,877	875,348
b) Liabilities to other Depository Corps.	239,264	250,014	255,054	312,385	363,003	341,647	321,902	332,750
1) Reserve deposits (Banker's deposits)	196,302	207,750	207,574	264,356	305,169	280,179	267,305	275,006
2) Other liabilities (Currency in scheduled banks)	42,962	42,264	47,480	48,029	57,834	61,468	54,597	57,744
c) Deposits included in broad money (Private sector deposits)	3,335	3,327	4,931	4,798	7,008	6,229	4,022	5,488
<b>Public sector funds/deposits</b>	<b>23,714</b>	<b>23,028</b>	<b>23,225</b>	<b>23,419</b>	<b>23,478</b>	<b>23,478</b>	<b>23,478</b>	<b>23,478</b>
<b>Counterpart funds</b>	<b>539</b>	<b>525</b>	<b>546</b>	<b>512</b>	<b>519</b>	<b>519</b>	<b>521</b>	<b>521</b>
<b>Paid up Capital and Reserve</b>	<b>5,515</b>	<b>15,514</b>	<b>15,514</b>	<b>34,656</b>	<b>55,939</b>	<b>55,939</b>	<b>55,939</b>	<b>55,939</b>
<b>Other items (Net)</b>	<b>92,644</b>	<b>119,024</b>	<b>217,385</b>	<b>147,881</b>	<b>190,356</b>	<b>201,858</b>	<b>205,864</b>	<b>142,559</b>
Other Liabilities	120,364	152,376	270,905	200,070	269,387	245,313	263,242	194,421
Less: Other Assets	27,720	33,352	53,520	52,189	79,031	43,455	57,378	51,862
Plus: Consolidation adjustments	-	-	-	-	-	-	-	-

## 2.2 Analytical Accounts of State Bank of Pakistan (Central Bank Survey)

(Million Rupees)

Description	2007			2008				
	Oct.	Nov.	Dec.	Jan.	Feb.	Mar.	Apr.	May.
<b>Net Foreign Assets</b>	<b>905,864</b>	<b>849,499</b>	<b>830,367</b>	<b>804,737</b>	<b>771,122</b>	<b>718,488</b>	<b>662,041</b>	<b>600,862</b>
<b>Claims on non-residents (Foreign Assets)</b>	<b>1,132,630</b>	<b>1,079,089</b>	<b>1,057,987</b>	<b>1,034,138</b>	<b>1,001,148</b>	<b>955,652</b>	<b>903,503</b>	<b>850,038</b>
a) Monetary Gold Coin and Bullion	100,791	100,736	108,087	121,613	127,740	123,321	118,201	124,608
b) Holding of SDRs	13,237	13,458	13,149	13,258	13,287	13,635	14,225	14,706
c) Foreign Currency	4,053	1,723	3,563	3,232	1,859	2,285	2,247	2,248
d) Securities other than shares (Foreign)	748,550	714,683	681,894	658,248	623,507	556,921	520,317	424,345
e) Deposits	147,938	146,773	148,784	136,793	131,741	149,016	139,118	166,984
f) Loans	-	-	-	-	-	-	-	-
g) Financial Derivatives	-	-	-	-	-	-	-	-
h) Others	118,061	101,716	102,510	100,994	103,014	110,474	109,395	117,147
<i>Of which Quota - IMF</i>	98,706	100,633	99,892	99,892	101,922	106,614	108,304	112,406
<b>Less: Liabilities to non-residents (Foreign Liab.)</b>	<b>226,766</b>	<b>229,590</b>	<b>227,620</b>	<b>229,401</b>	<b>230,026</b>	<b>237,164</b>	<b>241,462</b>	<b>249,174</b>
a) Deposits	42,554	43,055	43,269	43,891	43,813	44,021	45,219	46,874
b) Securities other than shares (N.N.N.I.B Securities)	82,991	83,433	81,233	82,551	82,465	85,443	82,811	84,264
c) Financial Derivatives	-	-	-	-	-	-	-	-
d) Loans (IMF Loan 1 & PRGF and SDF)	101,221	103,102	103,118	102,959	103,748	107,700	113,432	118,036
e) Other (IMF Administration Charges)	-	-	-	-	-	-	-	-
<b>Claims on other Depository Corporations (Banks)</b>	<b>229,093</b>	<b>229,186</b>	<b>219,646</b>	<b>218,154</b>	<b>214,888</b>	<b>215,112</b>	<b>217,413</b>	<b>219,921</b>
a) Loans and Advances	211,909	212,701	203,461	201,969	198,703	199,427	201,728	204,236
b) Internal Bills Purchased and Discounted	116	116	116	116	116	116	116	116
c) Investment in Share Capital	17,068	16,369	16,069	16,069	16,069	15,569	15,569	15,569
<b>Net Claims on General government <sup>1</sup></b>	<b>336,405</b>	<b>480,294</b>	<b>524,970</b>	<b>624,614</b>	<b>672,999</b>	<b>730,517</b>	<b>838,231</b>	<b>888,042</b>
<b>Net claims on Central government</b>	<b>383,846</b>	<b>526,890</b>	<b>553,985</b>	<b>683,986</b>	<b>727,818</b>	<b>800,844</b>	<b>906,529</b>	<b>959,849</b>
<b>Claims on Central government</b>	<b>428,620</b>	<b>560,462</b>	<b>608,439</b>	<b>729,066</b>	<b>776,437</b>	<b>854,833</b>	<b>954,960</b>	<b>1,007,114</b>
a) Securities	420,649	552,491	600,468	721,095	768,466	846,862	946,989	999,143
b) Other Claims	7,971	7,971	7,971	7,971	7,971	7,971	7,971	7,971
<b>Less: Liabilities to Central government</b>	<b>44,774</b>	<b>33,572</b>	<b>54,454</b>	<b>45,080</b>	<b>48,619</b>	<b>53,989</b>	<b>48,431</b>	<b>47,265</b>
a) Deposits	44,774	33,572	54,454	45,080	48,619	53,989	48,431	47,265
b) Other Liabilities	-	-	-	-	-	-	-	-

### Revaluation Procedure:

- Gold is revalued on month end basis from June 07 before that it was revalued at the end of financial year (June end) on the basis of closing London Market Rate.
- SDR holdings (with IMF and SBP) are revalued on month end basis from June 07 before that it was revalued on weekly basis.
- IMF related balances, IMF Account No.1, IMF Account No. 2, IMF securities account and IMF quota account, are revalued at the close of IMF financial year i.e. 30th April and also 30<sup>th</sup> June of SBP.
- Liabilities balances such as PRGF loan account & IMF (SDF) loan account are revalued on month end basis.

## 2.2 Analytical Accounts of State Bank of Pakistan (Central Bank Survey)

(Million Rupees)

Description	2007			2008				
	Oct.	Nov.	Dec.	Jan.	Feb.	Mar.	Apr.	May.
<b>Net claims on Provincial governments <sup>2</sup></b>	<b>(47,441)</b>	<b>(46,596)</b>	<b>(29,015)</b>	<b>(59,372)</b>	<b>(54,819)</b>	<b>(70,327)</b>	<b>(68,298)</b>	<b>(71,807)</b>
<b>Claims on Provincial governments</b>	<b>11,144</b>	<b>12,751</b>	<b>14,753</b>	<b>14,802</b>	<b>14,816</b>	<b>15,519</b>	<b>15,624</b>	<b>15,481</b>
a) Securities	-	-	-	-	-	-	-	-
b) Other Claims	11,144	12,751	14,753	14,802	14,816	15,519	15,624	15,481
<b>Less: Liabilities to Provincial Govts.</b>	<b>58,585</b>	<b>59,347</b>	<b>43,768</b>	<b>74,174</b>	<b>69,635</b>	<b>85,846</b>	<b>83,922</b>	<b>87,288</b>
a) Deposits	58,585	59,347	43,768	74,174	69,635	85,846	83,922	87,288
b) Other Liabilities	-	-	-	-	-	-	-	-
<b>Claims on other sectors</b>	<b>16,347</b>	<b>16,488</b>	<b>17,280</b>	<b>17,289</b>	<b>15,905</b>	<b>16,353</b>	<b>16,399</b>	<b>16,469</b>
a) Other financial corporations	<b>16,347</b>	<b>16,488</b>	<b>17,280</b>	<b>17,289</b>	<b>15,905</b>	<b>16,353</b>	<b>16,399</b>	<b>16,469</b>
1) Loans and advances to NBFIs	13,834	13,975	13,967	13,976	12,592	12,540	12,586	12,656
2) Investment in NBFIs shares	2,513	2,513	3,313	3,313	3,313	3,813	3,813	3,813
b) Other resident sectors	-	-	-	-	-	-	-	-
<b>Monetary Base (Reserve Money)</b>	<b>1,247,933</b>	<b>1,271,759</b>	<b>1,367,907</b>	<b>1,314,202</b>	<b>1,350,246</b>	<b>1,338,148</b>	<b>1,328,705</b>	<b>1,371,663</b>
a) Currency in circulation	908,288	939,300	1,008,186	979,019	988,874	982,106	986,204	998,151
b) Liabilities to other Depository Corps.	334,554	327,365	354,575	330,181	356,381	352,190	338,200	369,295
1) Reserve deposits (Banker's deposits)	272,134	271,457	286,560	269,463	300,115	288,535	276,507	310,255
2) Other liabilities (Currency in scheduled banks)	62,420	55,908	68,015	60,718	56,266	63,655	61,693	59,040
c) Deposits included in broad money (Private sector deposits)	5,091	5,094	5,146	5,002	4,991	3,852	4,301	4,217
<b>Public sector funds/deposits</b>	<b>23,478</b>	<b>23,486</b>	<b>23,504</b>	<b>23,504</b>	<b>23,504</b>	<b>23,504</b>	<b>23,504</b>	<b>23,597</b>
<b>Counterpart funds</b>	<b>521</b>	<b>523</b>	<b>531</b>	<b>531</b>	<b>533</b>	<b>533</b>	<b>533</b>	<b>535</b>
<b>Paid up Capital and Reserve</b>	<b>65,079</b>	<b>65,079</b>	<b>65,079</b>	<b>65,079</b>	<b>65,079</b>	<b>65,079</b>	<b>65,079</b>	<b>65,079</b>
<b>Other items (Net)</b>	<b>150,698</b>	<b>214,619</b>	<b>135,240</b>	<b>261,476</b>	<b>235,552</b>	<b>253,206</b>	<b>316,263</b>	<b>264,422</b>
Other Liabilities	202,869	269,169	243,826	315,952	300,094	343,229	368,338	364,368
Less: Other Assets	52,171	54,550	108,586	54,476	64,542	90,023	52,075	99,946
Plus: Consolidation adjustments	-	-	-	-	-	-	-	-

1. General Government includes Central Government and Provincial Governments

2. Provincial Governments includes Provincial Governments and Local / city Governments

## 2.3 Analytical Accounts of Scheduled Banks

### (Other Depository Corporations Survey)

(Million Rupees)

Description	2005		2006		2007			
	Jun.	Dec.	Jun.	Dec.	Jun.	Jul.	Aug.	Sep.
<b>Net Foreign Assets</b>	<b>132,057</b>	<b>98,310</b>	<b>146,615</b>	<b>132,362</b>	<b>195,836</b>	<b>188,344</b>	<b>167,552</b>	<b>177,603</b>
<b>Claims on non-residents (Foreign Assets)</b>	<b>163,157</b>	<b>129,635</b>	<b>174,951</b>	<b>163,641</b>	<b>227,594</b>	<b>218,073</b>	<b>196,048</b>	<b>205,017</b>
a) Foreign currency	6,806	7,350	6,415	9,546	7,352	7,651	8,895	8,972
b) Deposits	88,742	56,170	92,240	79,418	143,921	133,641	111,509	120,001
c) Securities other than shares <sup>1</sup>	67,609	66,115	76,296	74,677	76,321	76,781	75,644	76,044
d) Loans	-	-	-	-	-	-	-	-
e) Financial derivatives	-	-	-	-	-	-	-	-
f) Other	-	-	-	-	-	-	-	-
<b>Less: Liabilities to non-residents (Foreign Liab.)</b>	<b>31,100</b>	<b>31,325</b>	<b>28,336</b>	<b>31,279</b>	<b>31,758</b>	<b>29,729</b>	<b>28,496</b>	<b>27,414</b>
a) Deposits	24,777	27,366	23,910	26,283	24,644	24,166	22,433	22,091
b) Securities other than shares	-	-	-	-	-	-	-	-
c) Financial derivatives	-	-	-	-	-	-	-	-
d) Loans	6,323	3,959	4,426	4,996	7,114	5,563	6,063	5,323
e) Other	-	-	-	-	-	-	-	-
<b>Claims on central bank</b>	<b>231,150</b>	<b>247,298</b>	<b>249,658</b>	<b>306,682</b>	<b>365,216</b>	<b>345,014</b>	<b>324,579</b>	<b>336,461</b>
a) Currency	42,962	42,265	47,480	48,029	57,834	61,468	54,597	57,744
b) Reserve deposits	188,188	205,033	202,178	258,653	307,382	283,546	269,982	278,717
c) Other Claims	-	-	-	-	-	-	-	-
<b>Net claims on General Government <sup>2</sup></b>	<b>464,937</b>	<b>390,770</b>	<b>419,036</b>	<b>364,574</b>	<b>572,959</b>	<b>614,958</b>	<b>630,650</b>	<b>649,085</b>
<b>Net claims on Central Govt.</b>	<b>524,419</b>	<b>448,391</b>	<b>484,418</b>	<b>455,523</b>	<b>685,634</b>	<b>735,111</b>	<b>747,856</b>	<b>776,535</b>
<b>Claims on Central Govt.</b>	<b>650,851</b>	<b>587,225</b>	<b>651,814</b>	<b>626,982</b>	<b>898,453</b>	<b>955,471</b>	<b>976,296</b>	<b>1,001,716</b>
a) Securities	600,743	551,012	597,924	568,506	838,985	897,111	917,189	941,968
b) Other claims	50,108	36,213	53,890	58,476	59,468	58,360	59,107	59,748
<b>Less: Liabilities to Central Govt.</b>	<b>126,432</b>	<b>138,834</b>	<b>167,396</b>	<b>171,459</b>	<b>212,819</b>	<b>220,360</b>	<b>228,440</b>	<b>225,181</b>
a) Deposits	126,432	138,834	167,396	171,459	212,819	220,360	228,440	225,181
b) Other Liabilities	-	-	-	-	-	-	-	-
<b>Net claims on provincial governments <sup>3</sup></b>	<b>(59,482)</b>	<b>(57,621)</b>	<b>(65,382)</b>	<b>(90,949)</b>	<b>(112,675)</b>	<b>(120,153)</b>	<b>(117,206)</b>	<b>(127,450)</b>
<b>Claims on provincial governments</b>	<b>33,742</b>	<b>34,983</b>	<b>53,386</b>	<b>35,320</b>	<b>40,891</b>	<b>40,282</b>	<b>40,258</b>	<b>37,287</b>
a) Securities	80	79	76	75	75	75	75	75
b) Other claims	33,662	34,904	53,310	35,245	40,816	40,207	40,183	37,212
<b>Less: Liabilities to prov. governments</b>	<b>93,224</b>	<b>92,604</b>	<b>118,768</b>	<b>126,269</b>	<b>153,566</b>	<b>160,435</b>	<b>157,464</b>	<b>164,737</b>
a) Deposits	93,224	92,604	118,768	126,269	153,566	160,435	157,464	164,737
b) Other liabilities	-	-	-	-	-	-	-	-

Note: Analytical accounts are the statistical presentation of monetary statistics of Scheduled Banks based on monthly reporting closely in the line with MFSM.

## 2.3 Analytical Accounts of Scheduled Banks

### (Other Depository Corporations Survey)

(Million Rupees)

Description	2005		2006		2007			
	Jun.	Dec.	Jun.	Dec.	Jun.	Jul.	Aug.	Sep.
<b>Claims on other sectors</b>	<b>1,786,703</b>	<b>2,090,923</b>	<b>2,192,086</b>	<b>2,455,960</b>	<b>2,603,164</b>	<b>2,551,216</b>	<b>2,559,188</b>	<b>2,583,711</b>
a) Other financial corporations	79,341	104,131	98,459	121,183	144,224	140,247	131,483	127,771
b) Public non financial corporations	106,431	124,893	136,209	136,126	164,140	156,659	154,904	163,092
c) Other non financial corporations	646,467	753,767	798,577	906,975	926,057	917,795	923,709	655,696
d) Other resident sectors	954,464	1,108,132	1,158,841	1,291,676	1,368,743	1,336,515	1,349,092	1,637,152
<b>Liabilities to Central Bank</b>	<b>189,678</b>	<b>192,709</b>	<b>202,157</b>	<b>255,829</b>	<b>269,415</b>	<b>257,378</b>	<b>197,757</b>	<b>219,184</b>
<b>Deposits included in broad money</b>	<b>2,295,425</b>	<b>2,466,337</b>	<b>2,661,514</b>	<b>2,786,148</b>	<b>3,205,560</b>	<b>3,147,470</b>	<b>3,218,083</b>	<b>3,234,185</b>
Transferable deposits (Demand deposits)	1,842,465	1,739,235	1,974,405	1,975,397	2,308,209	2,255,464	2,297,505	2,288,186
a) Other financial corporations	16,276	31,460	31,267	30,561	62,008	56,270	51,026	52,318
b) Public non financial corporations	124,015	122,578	124,708	83,627	126,860	122,902	163,283	156,498
c) Other non financial corporations	593,068	563,885	593,012	623,956	727,738	684,295	683,354	275,795
d) Other resident sectors	1,109,106	1,021,312	1,225,418	1,237,253	1,391,603	1,391,997	1,399,842	1,803,575
Time deposits	452,960	727,102	687,109	810,751	897,351	892,006	920,578	945,999
a) Other financial corporations	7,617	13,913	18,842	28,927	29,838	32,529	37,730	38,379
b) Public non financial corporations	93,133	148,919	131,483	131,955	145,570	133,755	137,346	134,990
c) Other non financial corporations	109,393	150,033	171,011	203,150	248,101	253,930	264,058	265,044
d) Other resident sectors	242,817	414,237	365,773	446,719	473,842	471,792	481,444	507,586
<b>Deposits Excluded from broad money</b>	<b>29,906</b>	<b>49,022</b>	<b>54,626</b>	<b>64,030</b>	<b>58,236</b>	<b>43,898</b>	<b>39,582</b>	<b>40,102</b>
<b>Loans</b>	<b>24,878</b>	<b>47,878</b>	<b>165,957</b>	<b>159,980</b>	<b>214,667</b>	<b>166,026</b>	<b>168,384</b>	<b>165,513</b>
<i>Of which: Other financial corporations</i>	672	1,540	1,448	5,203	3,136	5,570	3,817	6,629
<b>Financial Derivatives</b>	<b>-</b>	<b>-</b>	<b>-</b>	<b>-</b>	<b>-</b>	<b>-</b>	<b>-</b>	<b>-</b>
<b>Central Govt. Lending Fund</b>	<b>9,314</b>	<b>9,314</b>	<b>9,314</b>	<b>9,314</b>	<b>9,762</b>	<b>9,427</b>	<b>9,426</b>	<b>9,422</b>
<b>Long -Term Foreign Liabilities</b>	<b>110</b>	<b>97</b>	<b>84</b>	<b>65</b>	<b>56</b>	<b>50</b>	<b>50</b>	<b>50</b>
<b>Shares and Other equity</b>	<b>201,521</b>	<b>225,803</b>	<b>246,334</b>	<b>317,141</b>	<b>420,191</b>	<b>415,532</b>	<b>411,545</b>	<b>398,631</b>
a) Funds contributed by owners	98,086	106,250	121,198	165,858	206,118	207,797	209,265	223,089
b) Retained earnings	4,655	11,896	29,798	26,120	44,263	40,121	39,157	37,358
c) General & Special Reserves	85,548	88,150	95,997	109,051	143,720	144,095	145,303	117,621
d) Valuation adjustment	13,232	19,507	(659)	16,112	26,090	23,519	17,820	20,563
<b>Other items (net)</b>	<b>(135,985)</b>	<b>(163,858)</b>	<b>(332,587)</b>	<b>(332,926)</b>	<b>(440,710)</b>	<b>(340,249)</b>	<b>(362,854)</b>	<b>(320,225)</b>
Other liabilities	762,030	835,862	790,449	903,638	854,313	884,548	938,202	1,037,132
<i>Less: Other Assets</i>	898,015	999,720	1,123,036	1,236,564	1,295,023	1,224,797	1,301,056	1,357,357
<i>Plus Consolidation adjustment</i>	-	-	-	-	-	-	-	-



## 2.3 Analytical Accounts of Scheduled Banks

### (Other Depository Corporations Survey)

(Million Rupees)

Description	2007			2008				
	Oct.	Nov.	Dec.	Jan.	Feb.	Mar.	Apr.	May.
<b>Net Foreign Assets</b>	<b>155,010</b>	<b>134,139</b>	<b>121,469</b>	<b>116,832</b>	<b>114,911</b>	<b>123,383</b>	<b>118,984</b>	<b>134,337</b>
<b>Claims on non-residents (Foreign Assets)</b>	<b>183,116</b>	<b>166,479</b>	<b>167,455</b>	<b>150,542</b>	<b>147,748</b>	<b>158,359</b>	<b>152,228</b>	<b>165,593</b>
a) Foreign currency	10,329	10,267	13,046	11,835	10,668	9,476	9,127	10,812
b) Deposits	97,500	83,514	81,219	68,017	66,675	75,583	66,602	75,592
c) Securities other than shares <sup>1</sup>	75,287	72,698	73,190	70,690	70,405	73,300	76,499	79,189
d) Loans	-	-	-	-	-	-	-	-
e) Financial derivatives	-	-	-	-	-	-	-	-
f) Other	-	-	-	-	-	-	-	-
<b>Less: Liabilities to non-residents</b>	<b>28,106</b>	<b>32,340</b>	<b>45,986</b>	<b>33,710</b>	<b>32,837</b>	<b>34,976</b>	<b>33,244</b>	<b>31,256</b>
a) Deposits	22,439	22,157	22,510	22,374	22,019	22,294	23,097	24,715
b) Securities other than shares	-	-	-	-	-	-	-	-
c) Financial derivatives	-	-	-	-	-	-	-	-
d) Loans	5,667	10,183	23,476	11,336	10,818	12,682	10,147	6,541
e) Other	-	-	-	-	-	-	-	-
<b>Claims on central bank</b>	<b>328,927</b>	<b>319,367</b>	<b>345,691</b>	<b>329,971</b>	<b>361,879</b>	<b>358,110</b>	<b>347,048</b>	<b>377,600</b>
a) Currency	62,420	55,908	68,015	60,718	56,266	63,655	61,693	59,040
b) Reserve deposits	266,507	263,459	277,676	269,253	305,613	294,455	285,355	318,560
c) Other Claims	-	-	-	-	-	-	-	-
<b>Net claims on General government <sup>2</sup></b>	<b>623,725</b>	<b>570,280</b>	<b>575,382</b>	<b>486,343</b>	<b>496,439</b>	<b>472,841</b>	<b>419,770</b>	<b>442,442</b>
<b>Net claims on Central government</b>	<b>753,508</b>	<b>701,342</b>	<b>702,879</b>	<b>631,877</b>	<b>654,290</b>	<b>632,091</b>	<b>575,356</b>	<b>572,217</b>
<b>Claims on Central government</b>	<b>999,624</b>	<b>959,698</b>	<b>965,029</b>	<b>893,548</b>	<b>899,636</b>	<b>879,528</b>	<b>823,712</b>	<b>809,262</b>
a) Securities	941,781	905,994	912,188	830,477	825,462	780,795	707,677	681,985
b) Other claims	57,843	53,704	52,841	63,071	74,174	98,733	116,035	127,277
<b>Less: Liabilities to Central government</b>	<b>246,116</b>	<b>258,356</b>	<b>262,150</b>	<b>261,671</b>	<b>245,346</b>	<b>247,437</b>	<b>248,356</b>	<b>237,045</b>
a) Deposits <sup>3</sup>	246,116	258,356	262,150	261,671	245,346	247,437	248,356	237,045
b) Other Liabilities	-	-	-	-	-	-	-	-
<b>Net Claims on Provincial governments <sup>4</sup></b>	<b>(129,783)</b>	<b>(131,062)</b>	<b>(127,497)</b>	<b>(145,534)</b>	<b>(157,851)</b>	<b>(159,250)</b>	<b>(155,586)</b>	<b>(129,775)</b>
<b>Claims on Provincial governments</b>	<b>32,557</b>	<b>28,845</b>	<b>24,937</b>	<b>16,962</b>	<b>11,106</b>	<b>7,751</b>	<b>12,143</b>	<b>46,035</b>
a) Securities	75	79	75	161	75	75	75	75
b) Other claims	32,482	28,766	24,862	16,801	11,031	7,676	12,068	45,960
<b>Less: Liabilities to Prov. governments</b>	<b>162,340</b>	<b>159,907</b>	<b>152,434</b>	<b>162,496</b>	<b>168,957</b>	<b>167,001</b>	<b>167,729</b>	<b>175,810</b>
a) Deposits	162,340	159,907	152,434	162,496	168,957	167,001	167,729	175,810
b) Other liabilities	-	-	-	-	-	-	-	-

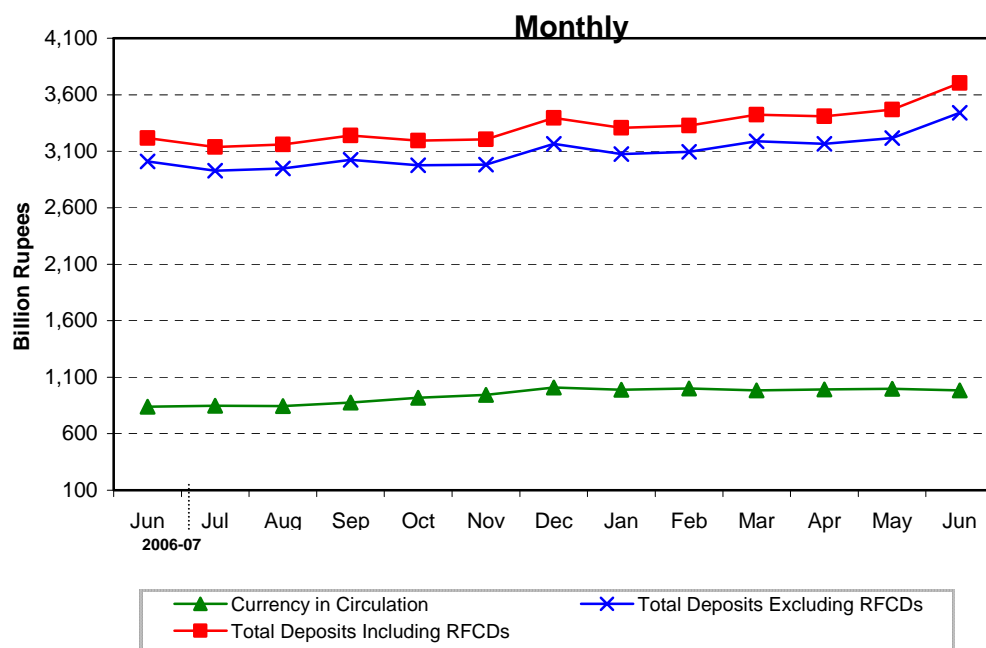
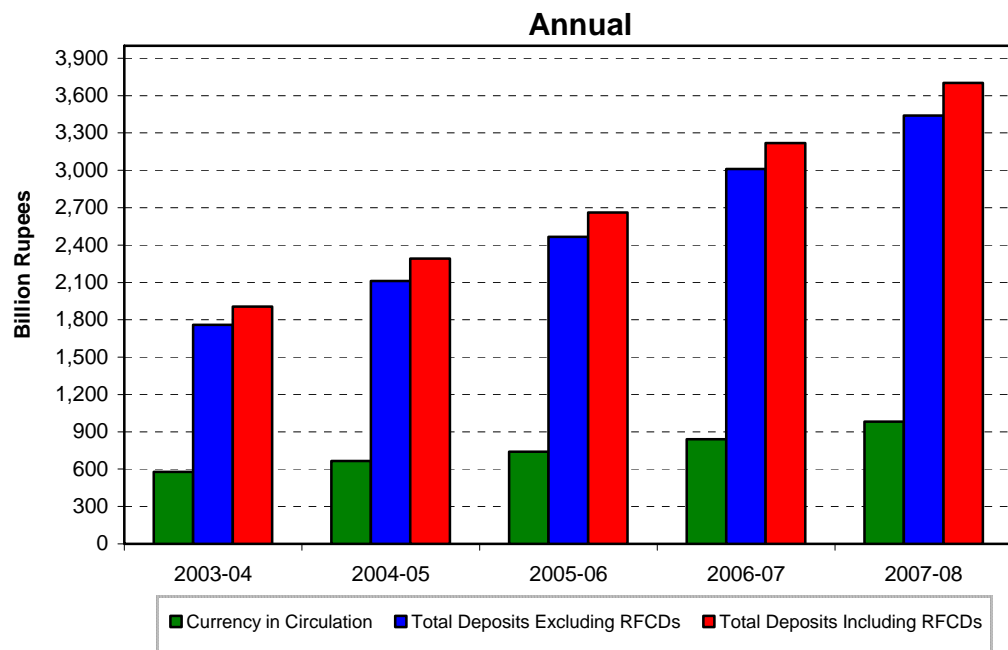
## 2.3 Analytical Accounts of Scheduled Banks (Other Depository Corporations Survey)

(Million Rupees)

Description	2007			2008				
	Oct.	Nov.	Dec.	Jan.	Feb.	Mar.	Apr.	May.
<b>Claims on other sectors</b>	<b>2,645,271</b>	<b>2,754,044</b>	<b>2,895,084</b>	<b>2,893,092</b>	<b>2,951,668</b>	<b>3,004,714</b>	<b>3,057,132</b>	<b>3,047,126</b>
a) Other financial corporations	148,890	157,692	155,659	138,629	139,808	146,288	140,644	132,900
b) Public non financial corporations	159,620	170,432	176,606	171,470	196,720	195,580	209,783	228,266
c) Other non financial corporations	988,360	1,039,289	1,010,516	1,026,746	1,058,662	1,064,125	1,091,078	1,091,754
d) Other resident sectors	1,348,401	1,386,631	1,552,303	1,556,247	1,556,478	1,598,721	1,615,627	1,594,206
<b>Liabilities to Central Bank</b>	<b>218,384</b>	<b>220,049</b>	<b>241,778</b>	<b>219,712</b>	<b>215,159</b>	<b>224,949</b>	<b>216,967</b>	<b>222,517</b>
<b>Deposits included in broad money</b>	<b>3,213,700</b>	<b>3,275,848</b>	<b>3,374,608</b>	<b>3,320,148</b>	<b>3,363,260</b>	<b>3,412,167</b>	<b>3,406,615</b>	<b>3,468,537</b>
Transferable deposits (Demand deposits)	2,281,380	2,331,496	2,390,315	2,342,289	2,361,266	2,379,707	2,372,973	2,411,639
a) Other financial corporations	45,852	55,559	48,230	51,246	51,050	51,693	53,056	47,508
b) Public non financial corporations	147,323	172,827	158,409	157,413	167,059	150,302	148,281	139,431
c) Other non financial corporations	656,878	671,391	684,755	660,537	672,223	683,500	689,435	713,066
d) Other resident sectors	1,431,327	1,431,719	1,498,921	1,473,093	1,470,934	1,494,212	1,482,201	1,511,634
Time deposits	932,320	944,352	984,293	977,859	1,001,994	1,032,460	1,033,642	1,056,898
a) Other financial corporations	34,752	38,015	57,949	50,930	46,203	53,252	56,741	55,540
b) Public non financial corporations	121,042	133,685	140,995	145,902	150,755	142,642	149,371	142,670
c) Other non financial corporations	267,343	239,881	239,116	244,533	249,198	259,494	253,061	252,852
d) Other resident sectors	509,183	532,771	546,233	536,494	555,838	577,072	574,469	605,836
<b>Deposits Excluded from broad money</b>	<b>43,356</b>	<b>47,191</b>	<b>54,754</b>	<b>47,781</b>	<b>40,869</b>	<b>42,793</b>	<b>40,242</b>	<b>42,490</b>
<b>Loans</b>	<b>186,013</b>	<b>191,182</b>	<b>203,901</b>	<b>183,240</b>	<b>195,748</b>	<b>196,294</b>	<b>200,984</b>	<b>205,706</b>
<i>Of which: other financial corporations</i>	10,797	10,329	7,231	4,261	3,985	6,681	3,949	7,780
<b>Financial Derivatives</b>	-	-	-	-	-	-	-	-
<b>Central Govt. Lending Fund</b>	<b>9,422</b>	<b>9,414</b>	<b>9,414</b>	<b>9,413</b>	<b>9,413</b>	<b>9,329</b>	<b>9,329</b>	<b>9,329</b>
<b>Long -Term Foreign Liabilities</b>	<b>49</b>	<b>48</b>	<b>39</b>	<b>39</b>	<b>39</b>	<b>35</b>	<b>3,172</b>	<b>3,364</b>
<b>Shares and Other equity</b>	<b>403,175</b>	<b>405,644</b>	<b>452,789</b>	<b>470,500</b>	<b>475,861</b>	<b>477,181</b>	<b>473,171</b>	<b>461,684</b>
a) Funds contributed by owners	224,974	228,300	237,896	247,994	239,487	248,700	251,190	255,086
b) Retained earnings	37,887	33,809	56,407	65,998	73,556	56,923	51,396	53,281
c) General & Special Reserves	117,230	119,108	137,655	138,132	143,190	156,831	157,578	152,102
d) Valuation adjustment	23,084	24,427	20,831	18,376	19,628	14,727	13,007	1,215
<b>Other items (net)</b>	<b>(321,162)</b>	<b>(371,544)</b>	<b>(399,660)</b>	<b>(424,593)</b>	<b>(375,456)</b>	<b>(403,697)</b>	<b>(407,544)</b>	<b>(408,884)</b>
Other liabilities	1,116,675	1,156,827	989,943	749,884	863,851	873,615	958,967	973,571
<i>Less: Other Assets</i>	1,437,837	1,528,371	1,389,603	1,174,477	1,239,307	1,277,312	1,366,511	1,382,455
<i>Plus Consolidation adjustment</i>	-	-	-	-	-	-	-	-

1. Including Non-residents Securities
2. General Government includes Central Government and Provincial Governments
3. Monetary Survey (Stocks) including Privatization Commission amount in Govt. Deposits
4. Provincial Governments includes Provincial Governments and Local/City Governments

# Monetary Statistics



## 2.4 Monetary Statistics

( Million Rupees )

Last Saturday/ Last working day		Currency in Circulation	Other Deposits with SBP <sup>1</sup>	Currency in tills of Scheduled Banks	Banks' Deposits with SBP	Reserve Money (M <sub>0</sub> ) (1+2+3+4)	Total Deposits Excluding RFCDs	Resident Foreign Currency Deposits	Total Deposits Including RFCDs	Broad Money (M <sub>2</sub> ) (1+2+8)	Money Multi- plier (9/5)
		1	2	3	4	5	6	7	8	9	10
2003	Dec.	567,519	3,495	30,273	145,224	<b>746,511</b>	1,557,597	135,019	1,692,616	<b>2,263,630</b>	<b>3.03</b>
2004	Jun.	578,116	2,116	36,432	156,204	<b>772,868</b>	1,759,566	145,694	1,905,260	<b>2,485,492</b>	<b>3.22</b>
	Dec.	655,283	5,499	38,836	196,348	<b>895,966</b>	1,895,052	172,493	2,067,545	<b>2,728,327</b>	<b>3.05</b>
2005	Jun.	665,901	3,335	43,472	196,302	<b>909,010</b>	2,111,113	180,295	2,291,408	<b>2,960,644</b>	<b>3.26</b>
	Dec.	731,749	3,327	42,527	207,750	<b>985,352</b>	2,266,913	189,525	2,456,438	<b>3,191,513</b>	<b>3.24</b>
2006	Jun.	740,390	4,931	48,439	207,574	<b>1,001,334</b>	2,466,083	195,501	2,661,584	<b>3,406,905</b>	<b>3.40</b>
	Dec.	874,260	4,798	48,367	264,356	<b>1,191,781</b>	2,596,030	198,719	2,794,749	<b>3,673,807</b>	<b>3.08</b>
2007	Jun.	840,181	7,012	58,072	305,169	<b>1,210,434</b>	3,010,650	207,312	3,217,962	<b>4,065,155</b>	<b>3.36</b>
	Dec.	1,007,831	5,153	68,371	286,560	<b>1,367,915</b>	3,165,819	228,042	3,393,861	<b>4,406,846</b>	<b>3.22</b>
2008	Jun. <sup>P</sup>	982,325	4,256	68,966	415,818	<b>1,471,365</b>	3,439,122	263,430	3,702,552	<b>4,689,134</b>	<b>3.19</b>
2007	Jun.	840,181	7,012	58,072	305,169	<b>1,210,434</b>	3,010,650	207,312	3,217,962	<b>4,065,155</b>	<b>3.36</b>
	Jul.	847,083	6,226	53,416	282,376	<b>1,189,100</b>	2,927,867	209,106	3,136,973	<b>3,990,282</b>	<b>3.36</b>
	Aug.	845,784	5,852	53,178	272,719	<b>1,177,533</b>	2,948,589	212,317	3,160,905	<b>4,012,541</b>	<b>3.41</b>
	Sep.	874,919	5,454	58,000	275,006	<b>1,213,379</b>	3,023,701	215,048	3,238,749	<b>4,119,122</b>	<b>3.39</b>
	Oct.	917,590	5,150	57,405	276,034	<b>1,256,179</b>	2,975,067	220,203	3,195,271	<b>4,118,010</b>	<b>3.28</b>
	Nov.	942,631	5,103	55,132	292,145	<b>1,295,011</b>	2,982,783	222,533	3,205,317	<b>4,153,051</b>	<b>3.21</b>
	Dec.	1,007,831	5,153	68,371	286,560	<b>1,367,915</b>	3,165,819	228,042	3,393,861	<b>4,406,846</b>	<b>3.22</b>
	Jan.	989,245	5,074	56,288	255,664	<b>1,306,270</b>	3,074,672	232,699	3,307,371	<b>4,301,690</b>	<b>3.29</b>
	Feb.	1,001,090	5,615	54,429	275,255	<b>1,336,389</b>	3,094,386	231,863	3,326,249	<b>4,332,954</b>	<b>3.24</b>
	Mar.	982,001	3,850	63,761	288,535	<b>1,338,147</b>	3,187,355	234,882	3,422,237	<b>4,408,088</b>	<b>3.29</b>
	Apr.	993,061	4,294	56,757	289,827	<b>1,343,940</b>	3,165,770	243,252	3,409,022	<b>4,406,377</b>	<b>3.28</b>
	May.	997,813	4,212	59,380	310,255	<b>1,371,659</b>	3,215,395	252,852	3,468,248	<b>4,470,273</b>	<b>3.26</b>
	Jun. <sup>P</sup>	982,325	4,256	68,966	415,818	<b>1,471,365</b>	3,439,122	263,430	3,702,552	<b>4,689,134</b>	<b>3.19</b>

Source: Monetary .Policy.Department.SBP

1- Excluding IMF A/c Nos. 1 & 2, SAF loan account, counterpart funds, deposits of foreign central banks, foreign governments , international organizations and deposit money banks.

Note : i - Data is based on weekly returns. The quarterly data covers the period up to the last working day and the Monthly data up to the last Saturday of the month.

ii-Compilation of M1 based on weekly data has been discontinued. Now M1 is being compiled on the basis of monthly returns and is given in Table 2.1

## 2.5 Analysis of Causative Factors for Changes in Monetary Statistics

(Million Rupees)

Description	2004-05			2005-06		
	Jul.-Dec.	Jan.-Jun.	Total	Jul.-Dec.	Jan.-Jun.	Total
<b>1. Public Sector</b>	<b>28,891</b>	<b>62,251</b>	<b>91,141</b>	<b>64,281</b>	<b>22,598</b>	<b>86,879</b>
i) Budgetary support	23,763	43,389	67,152	80,232	(13,169)	67,063
ii) Commodity operations	3,797	18,166	21,963	(15,123)	35,048	19,926
iii) Effect of Zakat fund etc.	1,331	695	2,026	(829)	719	(110)
<b>2. Credit to Non-Government Sector (A+B+C)</b>	<b>268,907</b>	<b>149,792</b>	<b>418,699</b>	<b>294,145</b>	<b>114,255</b>	<b>408,401</b>
(A) Credit to private Sector	284,703	153,145	437,848	297,651	104,146	401,797
i) Commercial Banks	284,581	152,149	436,730	295,864	121,548	417,411
ii) Specialized Banks	122	996	1,118	1,787	(17,402)	(15,615)
(B) Credit to Public Sector Enterprise (PSEs)	(11,183)	(1,506)	(12,689)	(1,994)	9,636	7,643
i) Autonomous Bodies	(1,543)	(526)	(2,069)	(2,641)	7,396	4,755
ii) Others	(8,886)	(128)	(9,014)	(38)	2,437	2,399
iii) PSEs Special Account-Debt Replacement with SBP	(754)	(852)	(1,606)	686	(197)	489
(C) Other Financial Institutions ( SBP Credit to NBFIs )	(4,613)	(1,847)	(6,460)	(1,512)	473	(1,038)
<b>3. Counterpart Funds</b>	<b>(21)</b>	<b>109</b>	<b>88</b>	<b>14</b>	<b>(21)</b>	<b>(7)</b>
<b>4. Other Items (net)</b>	<b>(58,244)</b>	<b>(30,281)</b>	<b>(88,525)</b>	<b>(60,902)</b>	<b>(61,514)</b>	<b>(122,416)</b>
<b>5. Domestic Credit Expansion (+) /     Contraction (-) (1+2+3+4)</b>	<b>239,533</b>	<b>181,871</b>	<b>421,404</b>	<b>297,539</b>	<b>75,318</b>	<b>372,857</b>
<b>6. Foreign Assets (net)</b>	<b>3,302</b>	<b>50,446</b>	<b>53,748</b>	<b>(66,670)</b>	<b>140,073</b>	<b>73,403</b>
<b>7. Monetary Expansion ((5+6)</b>	<b>242,834</b>	<b>232,318</b>	<b>475,152</b>	<b>230,869</b>	<b>215,392</b>	<b>446,260</b>

	2007						
	Jun.	Jul.	Aug.	Sep.	Oct.	Nov.	Dec.
<b>1. Public Sector</b>	<b>(77,182)</b>	<b>35,860</b>	<b>49,549</b>	<b>(21,981)</b>	<b>(1,649)</b>	<b>53,217</b>	<b>86,606</b>
i) Budgetary support	(78,861)	41,317	48,661	(18,379)	2,819	60,980	93,210
ii) Commodity operations	1,518	(5,380)	(140)	(2,530)	(3,681)	(7,515)	(6,754)
iii) Effect of Zakat fund etc.	161	(77)	1,029	(1,072)	(787)	(248)	150
<b>2. Credit to Non-Government Sector (A+B+C)</b>	<b>100,182</b>	<b>(54,840)</b>	<b>8,161</b>	<b>47,917</b>	<b>38,009</b>	<b>65,803</b>	<b>169,914</b>
(A) Credit to private Sector	94,720	(54,469)	8,977	42,612	41,111	64,832	158,290
i) Commercial Banks	93,822	(54,805)	6,041	42,896	40,384	66,484	158,406
ii) Specialized Banks	898	336	2,936	(284)	727	(1,652)	(116)
(B) Credit to Public Sector Enterprise (PSEs)	5,531	(358)	(702)	4,989	(3,080)	837	10,832
i) Autonomous Bodies	8,479	1,121	(590)	3,552	596	4,181	9,632
ii) Others	(2,923)	(1,479)	(112)	1,437	(3,676)	(3,336)	1,218
iii) PSEs Special Account-Debt Replacement with SBP	(25)	0	0	0	0	(7)	(18)
(C) Other Financial Institutions ( SBP Credit to NBFIs )	(69)	(13)	(115)	316	(22)	133	793
<b>3. Counterpart Funds</b>	<b>(7)</b>	<b>0</b>	<b>(2)</b>	<b>0</b>	<b>0</b>	<b>(2)</b>	<b>(7)</b>
<b>4. Other Items (net)</b>	<b>(25,621)</b>	<b>(47,278)</b>	<b>(3,441)</b>	<b>63,336</b>	<b>(36,144)</b>	<b>(30,771)</b>	<b>60,016</b>
<b>5. Domestic Credit Expansion (+) /     Contraction (-) (1+2+3+4)</b>	<b>(2,629)</b>	<b>(66,258)</b>	<b>54,267</b>	<b>89,273</b>	<b>216</b>	<b>88,247</b>	<b>316,529</b>
<b>6. Foreign Assets (net)</b>	<b>196,928</b>	<b>(8,615)</b>	<b>(32,008)</b>	<b>17,482</b>	<b>(1,501)</b>	<b>(53,207)</b>	<b>(62,734)</b>
<b>7. Monetary Expansion (+) / Contraction (-) (5+6)</b>	<b>194,299</b>	<b>(74,873)</b>	<b>22,259</b>	<b>106,755</b>	<b>(1,285)</b>	<b>35,040</b>	<b>253,795</b>

Note 1.The composition of autonomous bodies has changed over the years. At present, WAPDA, OGDC, KESC, PTCL, PIA, and Pak. Steel are included in the autonomous bodies.  
2.The data has been revised due to inclusion of privatization commission account with NBP in government deposits since Jun 2003 to Jun 2006 ( half yearly basis) and Jun 2006 on monthly basis upto end-Jun 2007.

## 2.5 Analysis of Causative Factors for Changes in Monetary Statistics

(Million Rupees)

Description	2006-07			2007-08 <sup>P</sup>		
	Jul.-Dec.	Jan.-Jun.	Total	Jul.-Dec.	Jan.-Jun.	Total
<b>1. Public Sector</b>	<b>19,945</b>	<b>72,899</b>	<b>92,844</b>	<b>201,602</b>	<b>382,189</b>	<b>583,792</b>
i) Budgetary support	37,278	64,737	102,015	228,608	325,943	554,551
ii) Commodity operations	(15,934)	6,724	(9,210)	(26,000)	54,652	28,652
iii) Effect of Zakat fund etc.	(1,400)	1,438	39	(1,006)	1,594	588
<b>2. Credit to Non-Government Sector (A+B+C)</b>	<b>251,333</b>	<b>134,371</b>	<b>385,705</b>	<b>274,965</b>	<b>166,705</b>	<b>441,670</b>
(A) Credit to private Sector	250,782	114,936	365,718	261,354	147,073	408,427
i) Commercial Banks	248,065	115,526	363,591	259,406	142,837	402,243
ii) Specialized Banks	2,717	(589)	2,128	1,948	4,236	6,184
(B) Credit to Public Sector Enterprise (PSEs)	(1,379)	21,068	19,689	12,518	20,488	33,005
i) Autonomous Bodies	4,475	16,694	21,169	18,492	10,747	29,239
ii) Others	(5,660)	4,433	(1,227)	(5,949)	9,834	3,884
iii) PSEs Special Account-Debt Replacement with SBP	(194)	(59)	(253)	(25)	(93)	(118)
(C) Other Financial Institutions (SBP Credit to NBFIs)	1,930	(1,632)	298	1,093	(855)	238
<b>3. Counterpart Funds</b>	<b>34</b>	<b>(7)</b>	<b>27</b>	<b>(12)</b>	<b>(12)</b>	<b>(24)</b>
<b>4. Other Items (net)</b>	<b>6,640</b>	<b>(101,517)</b>	<b>(94,877)</b>	<b>5,717</b>	<b>(90,798)</b>	<b>(85,081)</b>
<b>5. Domestic Credit Expansion (+) /     Contraction (-) (1+2+3+4)</b>	<b>277,953</b>	<b>105,746</b>	<b>383,699</b>	<b>482,273</b>	<b>458,084</b>	<b>940,357</b>
<b>6. Foreign Assets (net)</b>	<b>(11,050)</b>	<b>285,601</b>	<b>274,551</b>	<b>(140,582)</b>	<b>(175,796)</b>	<b>(316,378)</b>
<b>7. Monetary Expansion ((5+6)</b>	<b>266,903</b>	<b>391,347</b>	<b>658,250</b>	<b>341,691</b>	<b>282,288</b>	<b>623,979</b>

	2008					
	Jan.	Feb.	Mar.	Apr.	May.	Jun. <sup>P</sup>
<b>1. Public Sector</b>	<b>5,037</b>	<b>67,993</b>	<b>37,559</b>	<b>47,772</b>	<b>73,125</b>	<b>150,703</b>
i) Budgetary support	3,716	64,102	12,708	24,091	31,284	190,042
ii) Commodity operations	1,311	3,596	23,780	23,772	42,024	(39,831)
iii) Effect of Zakat fund etc.	10	295	1,071	(91)	(183)	492
<b>2. Credit to Non-Government Sector (A+B+C)</b>	<b>(11,718)</b>	<b>44,423</b>	<b>71,648</b>	<b>33,898</b>	<b>31,600</b>	<b>(3,145)</b>
(A) Credit to private Sector	(16,310)	28,395	79,840	18,017	12,384	24,746
i) Commercial Banks	(16,800)	30,839	75,981	17,924	10,786	24,107
ii) Specialized Banks	490	(2,443)	3,860	93	1,599	639
(B) Credit to Public Sector Enterprise (PSEs)	4,581	15,836	(7,064)	15,833	19,147	(27,847)
i) Autonomous Bodies	789	4,764	(566)	(2,361)	6,038	2,084
ii) Others	3,792	11,073	(6,498)	18,194	13,203	(29,930)
iii) PSEs Special Account-Debt Replacement with SBP	0	0	0	0	(93)	0
(C) Other Financial Institutions (SBP Credit to NBFIs)	11	191	(1,129)	48	68	(44)
<b>3. Counterpart Funds</b>	<b>0</b>	<b>(2)</b>	<b>0</b>	<b>0</b>	<b>(2)</b>	<b>(7)</b>
<b>4. Other Items (net)</b>	<b>(67,402)</b>	<b>(26,084)</b>	<b>2,006</b>	<b>(48,507)</b>	<b>36,505</b>	<b>12,684</b>
<b>5. Domestic Credit Expansion (+) /     Contraction (-) (1+2+3+4)</b>	<b>(74,083)</b>	<b>86,328</b>	<b>111,213</b>	<b>33,162</b>	<b>141,228</b>	<b>160,235</b>
<b>6. Foreign Assets (net)</b>	<b>(31,073)</b>	<b>(55,064)</b>	<b>(36,078)</b>	<b>(34,874)</b>	<b>(77,332)</b>	<b>58,626</b>
<b>7. Monetary Expansion ((5+6)</b>	<b>(105,156)</b>	<b>31,264</b>	<b>75,134</b>	<b>(1,711)</b>	<b>63,896</b>	<b>218,861</b>

## 2.6 Liabilities and Assets of the State Bank of Pakistan Issue Department

(Million Rupees)

Last Saturday/ Last working day		LIABILITIES		Total Liabilities / Assets	ASSETS				
		Notes held in the Banking Department	Notes in Circulation		Gold and Foreign Assets				Rupee Coins / Notes
					(1) Gold Coins and Bullion	(2) Approved Foreign Exchange	(3) India Notes	Total	
2003	Dec.	125.8	595,159.2	595,285.0	41,257.0	514,517.5	535.2	556,309.6	2,434.6
2004	Jun.	160.8	611,742.9	611,903.7	47,532.1	514,138.8	543.8	562,214.7	2,799.2
	Dec.	126.0	690,946.2	691,072.2	47,532.1	434,236.5	543.8	482,312.4	3,067.7
2005	Jun.	145.6	705,720.1	705,865.7	53,870.0	484,308.4	593.0	538,771.4	2,961.2
	Dec.	156.6	769,617.5	769,774.1	53,870.0	426,373.5	593.0	480,836.5	2,469.6
2006	Jun.	139.3	784,235.9	784,375.2	76,317.3	567,347.6	562.6	644,227.4	2,865.5
	Dec.	140.9	917,808.9	917,949.9	76,317.3	561,728.7	562.6	638,608.5	2,640.0
2007	Jun.	135.6	893,292.8	893,428.4	81,277.1	697,851.6	638.2	779,767.0	3,012.3
	Dec.	187.7	1,076,328.6	1,076,516.3	99,127.4	699,199.5	638.2	798,965.2	2,730.4
2008	Jun.	160.7	1,050,148.2	1,050,308.9	122,618.6	465,771.5	638.2	589,028.4	2,722.5
2007	Jun.	135.6	893,292.8	893,428.4	81,277.1	697,851.6	638.2	779,767.0	3,012.3
	Jul.	190.2	895,504.4	895,694.6	81,277.1	661,013.3	638.2	742,928.6	2,978.5
	Aug.	159.6	894,001.9	894,161.5	83,082.5	703,741.8	638.2	787,462.5	2,945.4
	Sep.	193.1	927,989.9	928,183.0	93,238.4	703,048.2	638.2	796,924.9	2,866.9
2007	Oct.	163.1	969,842.4	970,005.5	93,408.2	761,605.3	638.2	855,651.8	2,819.6
	Nov.	195.2	992,576.4	992,771.5	99,182.1	752,272.6	638.2	852,092.9	2,785.6
	Dec.	187.7	1,076,328.6	1,076,516.3	99,127.4	699,199.5	638.2	798,965.2	2,730.4
2008	Jan.	126.0	1,040,269.2	1,040,395.2	106,361.1	686,878.0	638.2	793,877.4	2,709.2
	Feb.	130.4	1,050,242.4	1,050,372.8	119,671.5	623,222.0	638.2	743,531.9	2,686.9
	Mar.	183.1	1,041,863.2	1,042,046.3	125,700.4	570,056.8	638.2	696,395.5	2,660.3
2008	Apr.	145.5	1,044,472.9	1,044,618.4	121,351.9	557,199.1	638.2	679,189.3	2,632.4
	May.	165.5	1,051,806.8	1,051,972.3	122,618.6	439,025.4	638.2	562,282.3	2,586.4
	Jun.	160.7	1,050,148.2	1,050,308.9	122,618.6	465,771.5	638.2	589,028.4	2,722.5

## 2.6 Liabilities and Assets of the State Bank of Pakistan Issue Department

(Million Rupees)

Last Saturday/ Last working day	A S S E T S								
	Domestic Assets				With Reserve Bank of India pending transfer to Pakistan				
	Govt. of Pakistan Securities	Exchange & other Commercial Papers	Total		Gold Coins and Bullion	Sterling Securities	Govt. of India Securities	Rupee Coin	Total
2003 Dec.	35,457.8	78.5	37,970.9		671.7	316.5	12.6	3.7	1,004.5
2004 Jun.	45,671.5	78.5	48,549.2		773.1	350.1	12.8	3.8	1,139.8
Dec.	204,473.9	78.5	207,620.1		773.1	350.1	12.8	3.8	1,139.8
2005 Jun.	162,802.6	78.5	165,842.3		876.2	357.8	13.9	4.1	1,252.0
Dec.	285,137.5	78.5	287,685.7		876.2	357.8	13.9	4.1	1,252.0
2006 Jun.	135,585.4	78.5	138,529.4		1,240.4	360.9	13.2	3.9	1,618.4
Dec.	275,004.4	78.5	277,722.9		1,240.4	360.9	13.2	3.9	1,618.4
2007 Jun.	108,830.3	78.5	111,921.1		1,320.9	400.1	15.0	4.4	1,740.3
Dec.	272,714.7	78.5	275,523.6		1,608.1	400.1	15.0	4.4	2,027.5
2008 Jun.	456,070.5	78.5	458,871.9		1,989.2	400.1	15.0	4.4	2,408.6
2007 Jun.	108,830.3	78.5	111,921.1		1,320.9	400.1	15.0	4.4	1,740.3
Jul.	147,968.7	78.5	151,025.7		1,320.9	400.1	15.0	4.4	1,740.3
Aug.	101,905.4	78.5	104,929.3		1,350.2	400.1	15.0	4.4	1,769.7
Sep.	126,378.0	78.5	129,323.4		1,515.3	400.1	15.0	4.4	1,934.7
Oct.	109,520.9	78.5	112,419.0		1,515.3	400.1	15.0	4.4	1,934.7
Nov.	135,786.1	78.5	138,650.2		1,609.0	400.1	15.0	4.4	2,028.4
Dec.	272,714.7	78.5	275,523.6		1,608.1	400.1	15.0	4.4	2,027.5
2008 Jan.	241,585.2	78.5	244,372.9		1,725.9	400.1	15.0	4.4	2,144.9
Feb.	301,714.8	78.5	304,480.1		1,941.4	400.1	15.0	4.4	2,360.8
Mar.	340,453.3	78.5	343,192.2		2,039.2	400.1	15.0	4.4	2,458.6
Apr.	360,330.1	78.5	363,041.0		1,968.7	400.1	15.0	4.4	2,388.1
May.	484,616.5	78.5	487,281.4		1,989.2	400.1	15.0	4.4	2,408.6
Jun.	456,070.5	78.5	458,871.9		1,989.2	400.1	15.0	4.4	2,408.6

1. Gold is valued at end financial year (June ) on the basis of closing London Market Rate.

Source: Finance Department SBP

2. Approved Foreign Exchanges includes SDR held with IMF w.e.f June2004

3. Receivable from Reserve Bank of India.



## 2.7 Liabilities and Assets of the State Bank of Pakistan

### Banking Department

(Million Rupees)

Last Saturday/ Last working day		L I A B I L I T I E S											
									D e p o s i t s				
		Capital Paid-up	Reserve Fund	Rural Credit Fund	Industrial Credit Fund	Export Credit Fund	Loans Guar- antee Fund	Housing Credit Fund	Federal Govt.	Provincial Govts.	Banks	Others	Total
2003	Dec.	100.0	5,414.5	2,600.0	1,600.0	1,500.0	900.0	4,700.0	23,879.4	30,664.6	145,224.3	282,551.3	482,319.6
2004	Jun.	100.0	5,414.5	2,600.0	1,600.0	1,500.0	900.0	4,700.0	2,681.5	34,207.5	156,204.2	273,562.7	466,655.8
	Dec.	100.0	5,414.5	2,600.0	1,600.0	1,500.0	900.0	4,700.0	2,272.7	44,738.5	196,347.7	290,348.5	533,707.4
2005	Jun.	100.0	5,414.5	2,600.0	1,600.0	1,500.0	900.0	4,700.0	47,286.1	45,632.0	196,302.3	273,550.2	562,770.6
	Dec.	100.0	15,414.5	2,600.0	1,600.0	1,500.0	900.0	4,700.0	86,850.0	58,127.1	207,749.7	273,412.8	626,139.6
2006	Jun.	100.0	15,414.5	2,600.0	1,600.0	1,500.0	900.0	4,700.0	69,952.5	66,644.6	207,574.3	273,897.5	618,068.8
	Dec.	100.0	34,556.5	2,600.0	1,600.0	1,500.0	900.0	4,700.0	49,197.5	50,380.5	264,356.0	272,486.9	636,420.8
2007	Jun.	100.0	55,838.8	2,600.0	1,600.0	1,500.0	900.0	4,700.0	72,131.9	62,565.7	305,168.6	273,718.3	713,584.5
	Dec.	100.0	64,978.6	2,600.0	1,600.0	1,500.0	900.0	4,700.0	34,481.4	22,104.5	256,759.3	277,267.5	590,612.7
2008	Jun.	100.0	64,978.6	2,600.0	1,600.0	1,500.0	900.0	4,700.0	65,642.1	29,571.1	328,435.3	333,480.1	757,128.6
2007	Jun.	100.0	55,838.8	2,600.0	1,600.0	1,500.0	900.0	4,700.0	72,131.9	62,565.7	305,168.6	273,718.3	713,584.5
	Jul.	100.0	55,838.8	2,600.0	1,600.0	1,500.0	900.0	4,700.0	44,950.5	43,849.0	282,375.6	273,792.2	644,967.3
	Aug.	100.0	55,838.8	2,600.0	1,600.0	1,500.0	900.0	4,700.0	48,616.3	49,689.2	272,718.8	273,949.0	644,973.3
	Sep.	100.0	55,838.8	2,600.0	1,600.0	1,500.0	900.0	4,700.0	24,169.2	73,953.0	280,010.3	277,320.0	655,452.5
	Oct.	100.0	64,978.6	2,600.0	1,600.0	1,500.0	900.0	4,700.0	24,402.2	35,138.2	276,034.3	275,259.3	610,834.0
2008	Nov.	100.0	64,978.6	2,600.0	1,600.0	1,500.0	900.0	4,700.0	19,087.0	32,864.2	292,144.9	277,745.8	621,841.9
	Dec.	100.0	64,978.6	2,600.0	1,600.0	1,500.0	900.0	4,700.0	34,481.4	22,104.5	256,759.3	277,267.5	590,612.7
	Jan.	100.0	64,978.6	2,600.0	1,600.0	1,500.0	900.0	4,700.0	29,879.5	49,060.7	255,663.7	277,204.2	611,808.1
	Feb.	100.0	64,978.6	2,600.0	1,600.0	1,500.0	900.0	4,700.0	43,637.6	46,439.3	275,255.0	277,528.5	642,860.4
	Mar.	100.0	64,978.6	2,600.0	1,600.0	1,500.0	900.0	4,700.0	40,928.6	52,995.9	285,531.0	280,686.9	660,142.4
2008	Apr.	100.0	64,978.6	2,600.0	1,600.0	1,500.0	900.0	4,700.0	34,342.1	56,004.8	289,827.4	288,732.8	668,907.1
	May.	100.0	64,978.6	2,600.0	1,600.0	1,500.0	900.0	4,700.0	26,895.6	87,288.3	310,254.7	297,889.9	722,328.5
	Jun.	100.0	64,978.6	2,600.0	1,600.0	1,500.0	900.0	4,700.0	65,642.1	29,571.1	328,435.3	333,480.1	757,128.6

## 2.7 Liabilities and Assets of the State Bank of Pakistan

### Banking Department

(Million Rupees)

Last Saturday/ Last working day		LIABILITIES				Total Liabilities/ Assets	A S S E T S			
		Allocation of Special Drawing Rights Bills Payable Re- valuation Accounts Other Liabi- lities					Notes and Coins <sup>1</sup>	Bills Purchased and Discounted		
								Internal		
								Export Sector	Others	Total
2003	Dec.	1,526.0	143.0	38,883.2	33,967.6	573,653.9	125.8	3.6	33.4	37.0
2004	Jun.	1,526.0	494.4	45,205.6	38,946.0	569,642.3	160.8	3.6	33.4	37.0
	Dec.	1,526.0	251.0	45,205.6	57,064.6	654,569.0	126.0	3.6	33.4	37.0
2005	Jun.	1,526.0	1,099.7	51,646.6	54,792.1	688,649.3	145.6	3.6	33.4	37.0
	Dec.	1,526.0	118.5	51,646.6	87,784.8	794,029.9	156.6	3.6	33.4	37.0
2006	Jun.	1,526.0	472.7	74,406.9	183,199.2	904,488.6	139.3	3.6	33.4	37.0
	Dec.	1,526.0	152.8	74,406.9	112,684.2	871,147.1	140.9	3.6	33.4	37.0
2007	Jun.	1,526.0	571.9	79,440.9	176,548.6	1,038,910.7	135.6	3.6	33.4	37.0
	Dec.	1,526.0	493.5	97,408.6	124,938.3	891,357.7	187.7	3.6	33.4	37.0
2008	Jun.	1,526.0	1,335.1	121,280.9	285,918.0	1,243,567.2	160.7	3.6	33.4	37.0
2007	Jun.	1,526.0	571.9	79,440.9	176,548.6	1,038,910.7	135.6	3.6	33.4	37.0
	Jul.	1,526.0	462.4	79,440.9	150,315.9	943,951.2	190.2	3.6	33.4	37.0
	Aug.	1,526.0	822.1	81,275.7	170,382.0	966,217.8	159.6	3.6	33.4	37.0
	Sep.	1,526.0	309.8	91,596.6	89,539.7	905,663.4	193.1	3.6	33.4	37.0
	Oct.	1,526.0	223.3	91,596.6	88,260.6	868,819.2	163.1	3.6	33.4	37.0
	Nov.	1,526.0	437.2	97,464.2	125,088.7	922,736.6	195.2	3.6	33.4	37.0
	Dec.	1,526.0	493.5	97,408.6	124,938.3	891,357.7	187.7	3.6	33.4	37.0
2008	Jan.	1,526.0	165.5	104,759.6	155,020.6	949,658.4	126.0	3.6	33.4	37.0
	Feb.	1,526.0	203.2	118,286.0	152,003.0	991,257.2	130.4	3.6	33.4	37.0
	Mar.	1,526.0	271.6	124,412.7	213,788.8	1,076,520.2	183.1	3.6	33.4	37.0
	Apr.	1,526.0	173.2	119,993.6	221,414.9	1,088,393.3	145.2	3.6	33.4	37.0
	May.	1,526.0	150.9	121,280.9	230,109.8	1,151,774.7	165.5	3.6	33.4	37.0
	Jun.	1,526.0	1,335.1	121,280.9	285,918.0	1,243,567.2	160.7	3.6	33.4	37.0

<sup>1</sup> Includes all coins of various denominations

(Contd.)

## 2.7 Liabilities and Assets of the State Bank of Pakistan Banking Department

(Million Rupees)

Last Saturday/ Last working day		A S S E T S								
		Balance held outside Pakistan			Loans and Advances to Scheduled Banks					Total (a)
					Govt. Debtor Balances	Agri-cultural Sector	Indus-trial Sector	Export Sector	Housing Sector	
			SDR held with IMF						Others	
2003	Dec.	104,834.5	14,136.1	319.3	55,353.1	2,563.9	77,303.2	66.9	13,992.6	149,279.7
2004	Jun.	132,021.4	-	5,533.1	58,005.3	2,328.8	88,292.3	66.9	13,194.5	161,887.8
	Dec.	147,057.8	2,284.8	7,241.5	60,737.4	1,169.4	102,522.5	-	9,179.9	173,609.2
2005	Jun.	139,513.0	1,774.6	10,814.0	59,753.3	1,498.5	109,446.9	-	11,288.6	181,987.3
	Dec.	167,964.8	1,370.3	14,503.1	63,627.6	3,066.9	106,386.3	-	13,102.5	186,183.4
2006	Jun.	121,824.0	1,088.6	16,404.3	62,194.7	7,297.3	107,982.2	-	16,104.3	193,578.5
	Dec.	128,433.7	758.6	6,560.1	63,183.5	41,382.5	131,733.6	-	14,416.2	250,715.8
2007	Jun.	152,719.3	418.5	10,820.4	62,228.2	42,149.7	134,621.3	-	14,420.1	253,419.3
	Dec.	151,435.5	314.0	23,628.8	57,776.5	40,386.3	100,060.1	-	14,232.1	212,455.0
2008	Jun.	143,807.9	3,349.9	23,141.4	49,777.3	39,465.3	100,963.9	-	14,233.9	204,440.4
2007	Jun.	152,719.3	418.5	10,820.4	62,228.2	42,149.7	134,621.3	-	14,420.1	253,419.3
	Jul.	190,034.2	421.6	12,125.6	58,228.2	41,605.6	137,866.5	-	14,420.1	252,120.4
	Aug.	160,347.1	394.3	12,715.6	58,192.1	41,088.5	120,836.8	-	14,420.1	234,537.5
	Sep.	183,923.8	367.3	11,562.7	57,955.9	40,014.7	100,461.2	-	14,232.1	212,663.9
	Oct.	141,161.4	370.0	13,306.2	57,955.9	39,625.8	100,159.6	-	14,232.1	211,973.4
	Nov.	142,185.0	319.4	14,347.2	57,856.0	40,094.4	100,582.4	-	14,232.1	212,764.8
	Dec.	151,435.5	314.0	23,628.8	57,776.5	40,386.3	100,060.1	-	14,232.1	212,455.0
2008	Jan.	136,422.8	103.2	16,287.2	57,777.3	39,724.9	97,606.1	-	14,233.9	209,342.2
	Feb.	140,671.2	83.4	17,270.9	49,777.3	39,593.4	97,357.4	-	14,233.9	200,962.0
	Mar.	150,526.5	58.0	17,434.2	49,777.5	40,624.3	94,889.2	-	14,233.9	199,524.9
	0Apr.	137,422.3	60.6	18,030.9	49,777.3	39,854.8	98,264.3	-	14,233.9	202,130.3
	May.	166,984.4	26.0	15,480.9	49,777.3	40,009.4	100,215.2	-	14,233.9	204,235.8
	Jun.	143,807.9	3,349.9	23,141.4	49,777.3	39,465.3	100,963.9	-	14,233.9	204,440.4

## 2.7 Liabilities and Assets of the State Bank of Pakistan

### Banking Department

(Concl'd.)  
(Million Rupees)

Last Saturday/ Last working day	A S S E T S											
	Loans and Advances to Non-Bank Financial Institutions					Other Loans And Advances (a+b)	I n v e s t m e n t s					Other Assets
	Indus- trial Sector	Housing Sector	Others	Total (b)			Sche- duled Banks	Non-Bank Financial Institutions	Govt. Securities	Others	Total	
2003 Dec.	4,440.4	13,857.3	4,786.7	23,084.4	172,364.1	38,954.7	2,497.1	36,747.5	907.6	79,106.9	202,730.2	
2004 Jun.	4,418.0	12,607.3	4,219.8	21,245.1	183,132.9	34,000.8	1,747.1	87,524.9	1,291.2	124,564.0	124,193.1	
Dec.	608.1	12,607.3	3,416.7	16,632.1	190,241.3	34,000.8	1,747.1	149,989.0	1,331.2	187,068.1	120,512.6	
2005 Jun.	595.0	11,242.3	3,416.7	15,254.0	197,241.4	28,273.8	1,673.4	168,392.0	933.5	199,272.6	139,850.8	
Dec.	358.3	11,242.3	2,141.7	13,742.3	199,925.7	28,273.8	1,673.4	249,452.0	890.9	280,290.1	129,782.4	
2006 Jun.	831.7	11,242.3	2,141.7	14,215.7	207,794.2	24,664.3	1,673.4	380,997.3	1,043.2	408,378.1	148,823.1	
Dec.	2,832.0	11,242.3	2,071.7	16,146.0	266,861.8	25,104.3	1,673.4	292,215.7	1,029.5	320,022.9	148,332.1	
2007 Jun.	2,831.3	11,242.3	-	14,073.6	267,492.9	18,058.5	2,113.4	351,843.9	1,051.0	373,066.8	234,220.1	
Dec.	2,784.4	11,242.3	-	14,026.7	226,481.7	15,568.9	3,313.4	299,369.8	1,126.0	319,378.0	169,895.0	
2008 Jun.	1,409.2	11,242.3	-	12,651.5	217,091.9	15,568.7	3,813.4	586,497.2	1,049.5	606,928.8	249,049.6	
2007 Jun.	2,831.3	11,242.3	-	14,073.6	267,492.9	18,058.5	2,113.4	351,843.9	1,051.0	373,066.8	234,220.1	
Jul.	2,818.7	11,242.3	-	14,061	266,181.4	17,067.6	2,113.4	261,352.2	1,051.0	281,584.2	193,377.2	
Aug.	2,704.0	11,242.3	-	13,946.3	248,483.8	17,467.6	2,113.4	345,222.4	1,051.0	365,854.4	178,226.0	
Sep.	2,620.1	11,242.3	-	13,862.4	226,526.3	17,067.6	2,513.4	288,071.6	1,051.0	308,703.6	174,349.6	
Oct.	2,598.5	11,242.3	-	13,840.8	225,814.2	17,067.6	2,513.4	295,887.4	1,051.0	316,519.4	171,447.9	
Nov.	2,731.7	11,242.3	-	13,974.0	226,738.8	15,568.9	2,513.4	359,625.6	1,051.0	378,758.8	160,155.4	
Dec.	2,784.4	11,242.3	-	14,026.7	226,481.7	15,568.9	3,313.4	299,369.8	1,126.0	319,378.0	169,895.0	
2008 Jan.	2,735.4	11,242.3	-	13,977.7	223,319.9	16,068.9	3,313.4	396,402.4	1,126.0	416,910.6	156,451.8	
Feb.	2,926.6	11,242.3	-	14,168.9	215,130.9	16,068.8	3,313.4	439,709.3	1,126.0	460,217.5	157,716.0	
Mar.	1,332.2	11,242.3	-	12,574.5	212,099.4	15,568.9	3,813.4	482,455.5	1,049.5	502,887.2	193,295.0	
Apr.	1,345.3	11,242.3	-	12,587.6	214,717.9	15,568.9	3,813.4	533,924.4	1,049.5	554,356.2	163,623.0	
May.	1,413.5	11,242.3	-	12,655.8	216,891.6	15,568.7	3,813.4	513,477.4	1,049.4	533,909.0	218,280.4	
Jun.	1,409.2	11,242.3	-	12,651.5	217,091.9	15,568.7	3,813.4	586,497.2	1,049.5	606,928.8	249,049.6	

Source: Finance Department SBP

## 2.8 Scheduled Bank's Consolidated Position

### Based on weekly position Liabilities & Assets (All Banks)

(Million Rupees)

Financial Position	2005	2006		2007				
	Dec.	Jun.	Dec.	Jun.	Jul.	Aug.	Sep.	Oct.
<b>ASSETS</b>								
Cash & Balances With Treasury Banks	270,185	273,896	332,452	397,352	353,082	339,226	356,764	347,539
Balances With Other Banks	111,638	120,345	140,575	200,104	184,321	154,169	160,422	144,473
Lending To Financial Institutions	198,618	226,451	192,343	269,120	191,190	187,130	188,512	195,366
Investments - Net	730,067	794,584	775,546	1,115,913	1,167,897	1,197,115	1,245,411	1,243,254
Advances – Net of Provision	1,908,067	2,005,658	2,281,866	2,350,810	2,296,412	2,293,617	2,316,858	2,345,740
Gross Advances	2,043,982	2,127,388	2,409,478	2,484,495	2,429,398	2,426,759	2,450,713	2,482,220
Less: Provision for Non- Performing Advances	135,914	121,730	127,611	133,686	132,986	133,143	133,855	136,480
Operating Fixed Assets	65,856	72,659	107,745	127,031	128,366	129,641	131,227	134,079
Deferred Tax Assets	8,258	6,760	7,988	8,144	8,067	8,109	5,789	5,886
Other Assets	167,386	172,644	217,731	233,167	213,172	211,121	255,414	238,769
<b>TOTAL ASSETS</b>	<b>3,460,076</b>	<b>3,672,997</b>	<b>4,056,246</b>	<b>4,701,641</b>	<b>4,542,508</b>	<b>4,520,126</b>	<b>4,660,397</b>	<b>4,655,106</b>
<b>LIABILITIES</b>								
Bills Payable	45,404	47,282	55,177	56,992	57,972	58,180	63,870	59,748
Borrowings	336,301	361,080	420,080	497,065	420,608	379,476	394,459	405,156
Deposits and Other Accounts	2,661,697	2,786,731	2,999,895	3,460,811	3,383,373	3,403,170	3,464,687	3,451,075
Sub-ordinated Loans	20,723	21,721	26,967	27,488	27,487	27,623	26,790	26,790
Liabilities Against Assets Subject to Finance Lease	619	740	898	1,068	1,038	1,035	978	972
Other Liabilities	122,605	133,514	150,308	165,221	161,080	160,233	192,364	188,495
Deferred Tax Liabilities	2,473	8,554	7,357	8,700	8,155	8,520	10,642	10,637
<b>TOTAL LIABILITIES</b>	<b>3,189,822</b>	<b>3,359,621</b>	<b>3,660,683</b>	<b>4,217,345</b>	<b>4,059,713</b>	<b>4,038,238</b>	<b>4,153,789</b>	<b>4,142,872</b>
<b>NET ASSETS</b>	<b>270,254</b>	<b>313,376</b>	<b>395,563</b>	<b>484,296</b>	<b>482,795</b>	<b>481,888</b>	<b>506,607</b>	<b>512,234</b>
<b>REPRESENTED BY:</b>								
Paid up Capital / Head Office Capital Account	105,789	119,860	165,477	205,895	207,528	207,524	223,103	224,163
Reserves	70,754	89,780	102,928	129,050	129,023	129,922	104,591	104,056
Unappropriated / Unremitted Profit	36,397	33,428	63,520	68,707	72,197	78,086	107,071	107,377
Surplus/ (Deficit) On Revaluation Of Assets	57,314	70,308	63,638	80,645	74,046	66,356	71,843	76,638
<b>TOTAL</b>	<b>270,254</b>	<b>313,376</b>	<b>395,563</b>	<b>484,296</b>	<b>482,795</b>	<b>481,888</b>	<b>506,607</b>	<b>512,234</b>

Format of weekly statement of position has been redesigned from the month of July 05.

## 2.8 Scheduled Bank's Consolidated Position

### Based on weekly position Liabilities & Assets (All Banks)

(Million Rupees)

Financial Position	2007		2008					
	Nov.	Dec.	Jan.	Feb.	Mar.	Apr.	May.	Jun.
<b>ASSETS</b>								
Cash & Balances With Treasury Banks	361,142	343,718	329,250	354,345	366,313	374,557	403,802	418,933
Balances With Other Banks	126,514	134,651	113,601	114,317	124,899	113,389	110,084	175,322
Lending To Financial Institutions	225,555	213,872	204,691	218,375	244,966	228,993	208,879	222,891
Investments - Net	1,213,543	1,210,920	1,201,526	1,163,455	1,107,028	1,060,154	975,761	1,007,529
Advances – Net of Provision	2,397,616	2,505,900	2,518,078	2,562,216	2,635,298	2,689,720	2,781,618	2,759,886
Gross Advances	2,535,759	2,651,173	2,684,089	2,734,642	2,812,732	2,870,619	2,964,509	2,943,319
Less: Provision for Non-Performing Advances	138,143	145,272	166,011	172,426	177,435	180,899	182,890	183,433
Operating Fixed Assets	135,916	146,135	176,424	182,468	183,539	199,810	200,529	202,262
Deferred Tax Assets	9,360	10,849	16,287	15,246	16,341	16,920	17,289	17,696
Other Assets	238,749	262,530	258,524	251,966	261,662	257,687	287,678	269,879
<b>TOTAL ASSETS</b>	<b>4,708,395</b>	<b>4,828,576</b>	<b>4,818,381</b>	<b>4,862,389</b>	<b>4,940,045</b>	<b>4,941,230</b>	<b>4,985,640</b>	<b>5,074,397</b>
<b>LIABILITIES</b>								
Bills Payable	59,777	69,242	61,888	56,169	63,154	57,618	58,440	64,752
Borrowings	432,859	439,335	427,231	447,042	456,102	428,801	433,961	389,585
Deposits and Other Accounts	3,478,385	3,565,537	3,574,788	3,591,861	3,628,142	3,650,050	3,696,208	3,832,454
Sub-ordinated Loans	27,539	27,171	27,171	29,790	37,582	41,506	41,608	41,169
Liabilities Against Assets Subject to Finance Lease	947	886	867	864	793	762	724	711
Other Liabilities	181,073	175,317	169,870	173,316	194,285	181,720	189,922	184,355
Deferred Tax Liabilities	9,496	9,921	10,246	11,694	12,360	14,407	13,605	13,568
<b>TOTAL LIABILITIES</b>	<b>4,190,075</b>	<b>4,287,409</b>	<b>4,272,060</b>	<b>4,310,737</b>	<b>4,392,418</b>	<b>4,374,863</b>	<b>4,434,469</b>	<b>4,526,592</b>
<b>NET ASSETS</b>	<b>518,320</b>	<b>541,167</b>	<b>546,321</b>	<b>551,652</b>	<b>547,626</b>	<b>566,367</b>	<b>551,172</b>	<b>547,805</b>
<b>REPRESENTED BY:</b>								
Paid up Capital / Head Office Capital Account	225,815	228,874	236,847	239,387	246,379	249,963	253,859	253,859
Reserves	107,643	108,921	116,624	118,207	130,699	131,606	127,971	127,816
Unappropriated / Unremitted Profit	108,608	115,538	109,376	111,059	89,138	91,304	94,396	92,790
Surplus/ (Deficit) On Revaluation Of Assets	76,254	87,835	83,474	82,999	81,410	93,493	74,944	73,339
<b>TOTAL</b>	<b>518,320</b>	<b>541,167</b>	<b>546,321</b>	<b>551,652</b>	<b>547,626</b>	<b>566,367</b>	<b>551,172</b>	<b>547,805</b>

Source: Finance Department SBP

## 2.9 Scheduled Banks' Liquidity Position

### All Banks<sup>1</sup>

(Million Rupees)

Last Saturday		LIQUID LIABILITIES IN PAKISTAN			LIQUID ASSETS MAINTAINED IN PAKISTAN			
		Demand Liabilities	Time Liabilities	Total	Cash in Pakistan	Balance With SBP	Balance With Agents of SBP	Unencumbered Approved Securities <sup>2</sup>
2003	Jun.	810,812	889,173	1,699,985	30,926	155,472	5,987	574,986
	Dec.	917,242	906,630	1,823,872	33,682	122,610	3,661	532,752
2004	Jun.	958,869	965,782	1,924,652	33,908	162,595	4,689	484,641
	Dec.	1,062,884	995,135	2,058,019	39,440	126,506	4,186	408,263
2005	Jun.	1,131,465	1,138,439	2,269,904	42,461	120,668	5,621	529,035
	Dec.	1,289,884	1,244,768	2,534,652	50,145	146,530	15,173	515,681
2006	Jun.	1,281,332	1,421,594	2,702,926	55,454	159,210	7,529	567,416
	Dec.	2,314,909	693,303	3,008,212	61,755	215,476	16,473	567,984
2007	Jun.	2,837,195	566,181	3,403,376	76,609	253,059	24,369	821,057
	Dec.	3,009,848	476,569	3,486,417	85,334	223,426	11,605	812,343
2007	Apr.	2,613,725	542,664	3,156,389	63,644	210,343	7,574	769,524
	May.	2,605,793	555,448	3,161,241	61,071	239,941	8,187	788,340
	Jun.	2,837,195	566,181	3,403,376	76,609	253,059	24,369	821,057
	Jul.	2,743,212	574,834	3,318,046	69,623	241,468	8,629	882,002
	Aug.	2,910,754	428,109	3,338,863	69,694	219,393	7,591	923,543
	Sep.	2,988,730	451,468	3,440,198	73,539	234,889	10,296	873,481
	Oct.	2,905,357	436,512	3,341,869	69,803	222,413	8,467	860,554
	Nov.	2,909,956	463,566	3,373,522	69,645	238,143	8,609	840,197
	Dec.	3,009,848	476,569	3,486,417	85,334	223,426	11,605	812,343
	Jan.	2,987,951	495,691	3,483,642	71,209	221,509	9,019	839,135
	Feb.	2,996,277	513,613	3,509,890	67,038	249,753	8,359	792,137
	Mar.	3,014,867	541,722	3,556,589	65,052	260,815	9,361	761,002
2008	Apr.	3,007,245	558,280	3,565,525	66,793	265,356	9,793	731,904

## 2.9 Scheduled Banks' Liquidity Position

### All Banks<sup>1</sup>

(Million Rupees)

Last Saturday		LIQUID LIABILITIES IN PAKISTAN			LIQUID ASSETS MAINTAINED IN PAKISTAN			
		Demand Liabilities	Time Liabilities	Total	Cash in Pakistan	Balance With SBP	Balance With Agents of SBP	Unencumbered Approved Securities <sup>2</sup>
2003	Jun.	810,812	889,173	1,699,985	30,926	155,472	5,987	574,986
	Dec.	917,242	906,630	1,823,872	33,682	122,610	3,661	532,752
2004	Jun.	958,869	965,782	1,924,652	33,908	162,595	4,689	484,641
	Dec.	1,062,884	995,135	2,058,019	39,440	126,506	4,186	408,263
2005	Jun.	1,131,465	1,138,439	2,269,904	42,461	120,668	5,621	529,035
	Dec.	1,289,884	1,244,768	2,534,652	50,145	146,530	15,173	515,681
2006	Jun.	1,281,332	1,421,594	2,702,926	55,454	159,210	7,529	567,416
	Dec.	2,314,909	693,303	3,008,212	61,755	215,476	16,473	567,984
2007	Jun.	2,837,195	566,181	3,403,376	76,609	253,059	24,369	821,057
	Dec.	3,009,848	476,569	3,486,417	85,334	223,426	11,605	812,343
2007	Apr.	2,613,725	542,664	3,156,389	63,644	210,343	7,574	769,524
	May.	2,605,793	555,448	3,161,241	61,071	239,941	8,187	788,340
	Jun.	2,837,195	566,181	3,403,376	76,609	253,059	24,369	821,057
	Jul.	2,743,212	574,834	3,318,046	69,623	241,468	8,629	882,002
	Aug.	2,910,754	428,109	3,338,863	69,694	219,393	7,591	923,543
	Sep.	2,988,730	451,468	3,440,198	73,539	234,889	10,296	873,481
	Oct.	2,905,357	436,512	3,341,869	69,803	222,413	8,467	860,554
	Nov.	2,909,956	463,566	3,373,522	69,645	238,143	8,609	840,197
	Dec.	3,009,848	476,569	3,486,417	85,334	223,426	11,605	812,343
	Jan.	2,987,951	495,691	3,483,642	71,209	221,509	9,019	839,135
	Feb.	2,996,277	513,613	3,509,890	67,038	249,753	8,359	792,137
	Mar.	3,014,867	541,722	3,556,589	65,052	260,815	9,361	761,002
2008	Apr.	3,007,245	558,280	3,565,525	66,793	265,356	9,793	731,904



## 2.10 NBFCs Consolidated Financial Position

Assets/ Liabilities	(Million Rupees)					
	Jun.07 <sup>P</sup>			Sep.07 <sup>P</sup>		
	DFIs	NBFCs	Total	DFIs	NBFCs	Total
<b>1. Currency and Deposits</b>	<b>11,206</b>	<b>89,838</b>	<b>101,044</b>	<b>13,981</b>	<b>84,792</b>	<b>98,773</b>
a. Currency	60	1,370	1,430	52	1,275	1,327
b. Transferable Deposits	-	65,169	65,169	3,266	60,496	63,762
c. Restricted Deposits	-	3,474	3,474	208	3,349	3,557
d. Other Deposits	11,146	19,825	30,971	10,455	19,672	30,127
<b>2. Investment in securities other than shares</b>	<b>20,044</b>	<b>27,349</b>	<b>47,393</b>	<b>14,400</b>	<b>36,001</b>	<b>50,401</b>
a. Short-term	4,420	6,642	11,062	2,121	6,810	8,931
b. Long-term	15,624	20,707	36,331	12,279	29,191	41,470
<b>3. Loans extended (Advances)</b>	<b>54,197</b>	<b>146,936</b>	<b>201,133</b>	<b>64,426</b>	<b>141,949</b>	<b>206,375</b>
a. Short-term	-	53,607	53,607	16,783	58,981	75,764
b. Long-term	54,197	93,329	147,526	47,643	82,968	130,611
<b>4. Investment in shares</b>	<b>29,216</b>	<b>174,001</b>	<b>203,217</b>	<b>32,978</b>	<b>179,360</b>	<b>212,338</b>
a. Quoted	29,216	172,438	201,654	28,515	175,718	204,233
b. Non quoted	-	1,563	1,563	4,463	3,642	8,105
<b>5. Insurance Technical Reserve</b>	<b>-</b>	<b>-</b>	<b>-</b>	<b>-</b>	<b>-</b>	<b>-</b>
a. Life	-	-	-	-	-	-
b. Non-life	-	-	-	-	-	-
<b>6. Financial Derivatives</b>	<b>-</b>	<b>2,107</b>	<b>2,107</b>	<b>-</b>	<b>1,452</b>	<b>1,452</b>
<b>7. Other accounts receivable</b>	<b>7,344</b>	<b>26,154</b>	<b>33,498</b>	<b>3,495</b>	<b>24,962</b>	<b>28,457</b>
<b>8. Non-financial assets</b>	<b>-</b>	<b>9,021</b>	<b>9,021</b>	<b>3,559</b>	<b>10,170</b>	<b>13,729</b>
a. Produced assets	-	5,949	5,949	3,540	6,263	9,803
i. Fixed assets	-	5,397	5,397	3,540	5,761	9,301
ii. Inventories	-	291	291	-	79	79
iii. Valuables	-	-	-	-	-	-
iv. Other produced assets	-	261	261	-	423	423
b. Non-produced assets	-	3,072	3,072	19	3,907	3,926
i. Land	-	1,740	1,740	19	2,766	2,785
ii. Other-non-produced assets	-	1,332	1,332	-	1,141	1,141
<b>Total Assets/ Liabilities</b>	<b>122,009</b>	<b>475,406</b>	<b>597,415</b>	<b>132,839</b>	<b>478,687</b>	<b>611,526</b>
<b>1. Deposits</b>	<b>24,841</b>	<b>29,323</b>	<b>54,164</b>	<b>25,220</b>	<b>30,035</b>	<b>55,255</b>
a. Restricted deposits	-	12,373	12,373	1,207	13,324	14,531
b. Other deposits	24,841	16,950	41,791	24,013	16,711	40,724
<b>2. Securities other than shares (bonds/debentures etc)</b>	<b>-</b>	<b>10,866</b>	<b>10,866</b>	<b>5,083</b>	<b>11,175</b>	<b>16,258</b>
a. Short-term	-	2,873	2,873	333	1,685	2,018
b. long-term	-	7,993	7,993	4,750	9,490	14,240
<b>3. Loans (Borrowings)</b>	<b>48,389</b>	<b>68,251</b>	<b>116,640</b>	<b>47,828</b>	<b>57,088</b>	<b>104,916</b>
a. Short-term	1,030	26,926	27,956	26,483	25,638	52,121
b. Long-term	47,359	41,325	88,684	21,345	31,450	52,795
<b>4. Financial Derivatives</b>	<b>-</b>	<b>1,350</b>	<b>1,350</b>	<b>-</b>	<b>961</b>	<b>961</b>
<b>5. Other accounts payable</b>	<b>3,427</b>	<b>49,645</b>	<b>53,072</b>	<b>8,521</b>	<b>40,013</b>	<b>48,534</b>
<b>6. Shares and other equity</b>	<b>45,353</b>	<b>315,971</b>	<b>361,324</b>	<b>46,187</b>	<b>339,414</b>	<b>385,601</b>
a. Quoted	19,745	157,168	176,913	5,653	204,845	210,498
b. Non quoted	-	46,254	46,254	20,892	36,416	57,308
c. Retained earnings	-	57,540	57,540	3,557	58,794	62,351
d. Current year result	1,876	20,532	22,408	1,231	3,665	4,896
e. General and special reserves	23,731	33,275	57,006	11,012	29,662	40,674
f. Valuation adjustments	-	1,202	1,202	3,842	6,032	9,874

## 2.10 NBFCs Consolidated Financial Position

(Million Rupees)

Assets/ Liabilities	Dec.07 <sup>P</sup>			Mar.08 <sup>P</sup>		
	DFIs	NBFCs	Total	DFIs	NBFCs	Total
<b>1. Currency and Deposits</b>	<b>20,117</b>	<b>80,371</b>	<b>100,488</b>	<b>23,072</b>	<b>81,827</b>	<b>104,899</b>
a. Currency	-	2,630	2,630	-	815	815
b. Transferable Deposits	4,467	52,361	56,828	12,359	55,658	68,017
c. Restricted Deposits	74	3,981	4,055	90	3,146	3,236
d. Other Deposits	15,576	21,399	36,975	10,623	22,208	32,831
<b>2. Investment in securities other than shares</b>	<b>16,121</b>	<b>48,645</b>	<b>64,766</b>	<b>21,368</b>	<b>54,365</b>	<b>75,733</b>
a. Short-term	2,760	10,093	12,853	7,047	9,250	16,297
b. Long-term	13,361	38,552	51,913	14,321	45,115	59,436
<b>3. Loans extended (Advances)</b>	<b>48,108</b>	<b>141,793</b>	<b>189,901</b>	<b>47,315</b>	<b>136,583</b>	<b>183,898</b>
a. Short-term	17,303	53,710	71,013	14,844	54,915	69,759
b. Long-term	30,805	88,083	118,888	32,471	81,668	114,139
<b>4. Investment in shares</b>	<b>23,524</b>	<b>198,120</b>	<b>221,644</b>	<b>21,540</b>	<b>215,380</b>	<b>236,920</b>
a. Quoted	21,769	194,767	216,536	19,778	212,195	231,973
b. Non quoted	1,755	3,353	5,108	1,762	3,185	4,947
<b>5. Insurance Technical Reserve</b>	<b>-</b>	<b>-</b>	<b>-</b>	<b>-</b>	<b>-</b>	<b>-</b>
a. Life	-	-	-	-	-	-
b. Non-life	-	-	-	-	-	-
<b>6. Financial Derivatives</b>	<b>-</b>	<b>1,032</b>	<b>1,032</b>	<b>-</b>	<b>238</b>	<b>238</b>
<b>7. Other accounts receivable</b>	<b>4,101</b>	<b>32,930</b>	<b>37,031</b>	<b>3,846</b>	<b>31,077</b>	<b>34,923</b>
<b>8. Non-financial assets</b>	<b>2,981</b>	<b>13,608</b>	<b>16,589</b>	<b>3,001</b>	<b>14,683</b>	<b>17,684</b>
a. Produced assets	2,754	7,092	9,846	2,885	7,831	10,716
i. Fixed assets	2,754	6,450	9,204	2,885	7,168	10,053
ii. Inventories	-	139	139	-	153	153
iii. Valuables	-	-	-	-	-	-
iv. Other produced assets	-	503	503	-	510	510
b. Non-produced assets	227	6,516	6,743	116	6,852	6,968
i. Land	227	3,013	3,240	115	2,979	3,094
ii. Other-non-produced assets	-	3,503	3,503	1	3,873	3,874
<b>Total Assets/ Liabilities</b>	<b>114,952</b>	<b>516,499</b>	<b>631,451</b>	<b>120,142</b>	<b>534,153</b>	<b>654,295</b>
<b>1. Deposits</b>	<b>15,597</b>	<b>31,533</b>	<b>47,130</b>	<b>13,277</b>	<b>30,542</b>	<b>43,819</b>
a. Restricted deposits	200	11,964	12,164	202	10,586	10,788
b. Other deposits	15,397	19,569	34,966	13,075	19,956	33,031
<b>2. Securities other than shares (bonds/debentures etc)</b>	<b>5,083</b>	<b>11,927</b>	<b>17,010</b>	<b>4,917</b>	<b>16,110</b>	<b>21,027</b>
a. Short-term	333	3,046	3,379	167	2,673	2,840
b. long-term	4,750	8,881	13,631	4,750	13,437	18,187
<b>3. Loans (Borrowings)</b>	<b>42,663</b>	<b>62,290</b>	<b>104,953</b>	<b>39,592</b>	<b>53,756</b>	<b>93,348</b>
a. Short-term	21,466	31,781	53,247	19,748	24,855	44,603
b. Long-term	21,197	30,509	51,706	19,844	28,901	48,745
<b>4. Financial Derivatives</b>	<b>-</b>	<b>775</b>	<b>775</b>	<b>-</b>	<b>-63</b>	<b>-63</b>
<b>5. Other accounts payable</b>	<b>6,973</b>	<b>42,431</b>	<b>49,404</b>	<b>8,663</b>	<b>42,434</b>	<b>51,097</b>
<b>6. Shares and other equity</b>	<b>44,636</b>	<b>36,754</b>	<b>81,390</b>	<b>53,693</b>	<b>391,374</b>	<b>445,067</b>
a. Quoted	2,000	207,486	209,486	2,000	217,202	219,202
b. Non quoted	25,993	40,803	66,796	31,293	44,542	75,835
c. Retained earnings	3,971	60,229	64,200	3,608	63,773	67,381
d. Current year result	1,959	17,594	19,553	6,237	20,096	26,333
e. General and special reserves	7,786	36,376	44,162	8,461	38,103	46,564
f. Valuation adjustments	2,927	5,055	7,982	2,094	7,658	9,752

NBFCs Non Bank Financial Companies

DFIs Development Finance Institutions

## 2.11 Classification of Deposits with NBFCs

(Million Rupees)

Sector	December 07 <sup>P</sup>			March 08 <sup>P</sup>		
	Depository	Non-Depository	Total	Depository	Non-Depository	Total
<b>1 Non-financial Corporations</b>	<b>12,797</b>	<b>270</b>	<b>13,067</b>	<b>14,039</b>	<b>277</b>	<b>14,316</b>
i Public	1,931	82	2,013	1,914	84	1,998
ii Private	10,866	188	11,054	12,125	193	12,318
<b>2 Financial Corporations</b>	<b>27,838</b>	<b>59</b>	<b>27,897</b>	<b>22,839</b>	<b>55</b>	<b>22,894</b>
i Central Bank	-	-	-	-	-	-
ii Deposit money institutions	18,870	59	18,929	19,077	55	19,132
ii Other deposit accepting institutions	5,671	-	5,671	913	-	913
iv Financial intermediaries	2,108	-	2,108	1,785	-	1,785
v Financial auxiliaries	246	-	246	146	-	146
vi Insurance and pension funds	943	-	943	918	-	918
<b>3 Central Government</b>	<b>803</b>	<b>-</b>	<b>803</b>	<b>803</b>	<b>-</b>	<b>803</b>
<b>4 Provincial Governments</b>	<b>24</b>	<b>-</b>	<b>24</b>	<b>24</b>	<b>-</b>	<b>24</b>
<b>5 Local Governments</b>	<b>-</b>	<b>-</b>	<b>-</b>	<b>-</b>	<b>-</b>	<b>-</b>
<b>6 Household</b>	<b>5,047</b>	<b>5</b>	<b>5,052</b>	<b>5,490</b>	<b>5</b>	<b>5,495</b>
<b>7 Non-profit Institutions (NPIs) Serving Households</b>	<b>282</b>	<b>-</b>	<b>282</b>	<b>282</b>	<b>-</b>	<b>282</b>
<b>8 Non-residents</b>	<b>5</b>	<b>-</b>	<b>5</b>	<b>5</b>	<b>-</b>	<b>5</b>
<b>9 Foreign Currency</b>	<b>-</b>	<b>-</b>	<b>-</b>	<b>-</b>	<b>-</b>	<b>-</b>
<b>Total</b>	<b>46,796</b>	<b>334</b>	<b>47,130</b>	<b>43,482</b>	<b>337</b>	<b>43,819</b>

## 2.12 Classification of NBFC's Loans Extended(Advances)

(Million Rupees)

Sector	December 07 <sup>P</sup>			March 08 <sup>P</sup>		
	Depository	Non-Depository	Total	Depository	Non-Depository	Total
<b>1 Non-financial corporations</b>	<b>83,901</b>	<b>8,948</b>	<b>92,849</b>	<b>78,178</b>	<b>9,066</b>	<b>87,244</b>
i Public	5,392	361	5,753	904	280	1,184
ii Private	78,509	8,587	87,096	77,274	8,786	86,060
<b>2 Financial Corporations</b>	<b>19,562</b>	<b>33,878</b>	<b>53,440</b>	<b>15,113</b>	<b>35,761</b>	<b>50,874</b>
i Central Bank	-	-	-	-	-	-
ii Deposit money institutions	7,301	3,024	10,325	5,135	3,819	8,954
ii Other deposit accepting institutions	8,783	6,017	14,800	7,163	3,760	10,923
iv Financial intermediaries	208	5,031	5,239	1,234	4,564	5,798
v Financial auxiliaries	3,222	19,803	23,025	1,543	23,614	25,157
vi Insurance and pension funds	48	3	51	38	4	42
<b>3 Central Government</b>	<b>1</b>	<b>-</b>	<b>1</b>	<b>-</b>	<b>-</b>	<b>-</b>
<b>4 Provincial Governments</b>	<b>-</b>	<b>-</b>	<b>-</b>	<b>-</b>	<b>-</b>	<b>-</b>
<b>5 Local Governments</b>	<b>-</b>	<b>-</b>	<b>-</b>	<b>-</b>	<b>-</b>	<b>-</b>
<b>6 Household</b>	<b>24,662</b>	<b>138</b>	<b>24,800</b>	<b>12,806</b>	<b>12,627</b>	<b>25,433</b>
<b>7 Non-profit Institutions (NPIs) Serving Households</b>	<b>19</b>	<b>-</b>	<b>19</b>	<b>19</b>	<b>-</b>	<b>19</b>
<b>8 Non-Residents</b>	<b>-</b>	<b>-</b>	<b>-</b>	<b>-</b>	<b>-</b>	<b>-</b>
<b>9 Bills purchased and discounted (inland bills)</b>	<b>-</b>	<b>105</b>	<b>105</b>	<b>-</b>	<b>85</b>	<b>85</b>
<b>10 Other Advances and Financial Leases</b>	<b>10,582</b>	<b>8,105</b>	<b>18,687</b>	<b>10,952</b>	<b>9,291</b>	<b>20,243</b>
<b>Total</b>	<b>138,727</b>	<b>51,174</b>	<b>189,901</b>	<b>117,068</b>	<b>66,830</b>	<b>183,898</b>

## 2.13 Classification of NBFC's Investments in Securities and Shares

(Million Rupees)

Securities/Shares	December 07 <sup>P</sup>			March 08 <sup>P</sup>		
	Depository	Non-Depository	Total	Depository	Non-Depository	Total
<b>A. Securities</b>	<b>23,491</b>	<b>41,275</b>	<b>64,766</b>	<b>28,492</b>	<b>47,241</b>	<b>75,733</b>
<b>1 Non-financial Corporations</b>	<b>9,659</b>	<b>22,676</b>	<b>32,335</b>	<b>14,376</b>	<b>29,948</b>	<b>44,324</b>
i Public	1,552	3,534	5,086	5,694	5,351	11,045
ii Private	8,107	19,142	27,249	8,682	24,597	33,279
<b>2 Financial Corporations</b>	<b>4,808</b>	<b>12,636</b>	<b>17,444</b>	<b>4,403</b>	<b>13,713</b>	<b>18,116</b>
i Central Bank	-	-	-	-	-	-
ii Deposit money institutions	3,292	5,725	9,017	2,500	7,158	9,658
ii Other deposit accepting institutions	1,001	2,835	3,836	1,221	2,001	3,222
iv Financial intermediaries	515	4,076	4,591	682	4,554	5,236
v Financial auxiliaries	-	-	-	-	-	-
vi Insurance and pension funds	-	-	-	-	-	-
<b>3 Central Government</b>	<b>8,771</b>	<b>5,963</b>	<b>14,734</b>	<b>9,569</b>	<b>3,540</b>	<b>13,109</b>
<b>4 Provincial Governments</b>	<b>-</b>	<b>-</b>	<b>-</b>	<b>-</b>	<b>-</b>	<b>-</b>
<b>5 Local Governments</b>	<b>-</b>	<b>-</b>	<b>-</b>	<b>-</b>	<b>-</b>	<b>-</b>
<b>6 Household</b>	<b>-</b>	<b>-</b>	<b>-</b>	<b>-</b>	<b>-</b>	<b>-</b>
<b>7 Non-profit institutions (NPIs) Serving Households</b>	<b>-</b>	<b>-</b>	<b>-</b>	<b>-</b>	<b>-</b>	<b>-</b>
<b>8 Non-Residents</b>	<b>-</b>	<b>-</b>	<b>-</b>	<b>-</b>	<b>-</b>	<b>-</b>
<b>9 Foreign Currency</b>	<b>253</b>	<b>-</b>	<b>253</b>	<b>144</b>	<b>40</b>	<b>184</b>
<b>B. Shares</b>	<b>35,788</b>	<b>185,856</b>	<b>221,644</b>	<b>33,665</b>	<b>203,256</b>	<b>236,921</b>
<b>1 Non-financial Corporations</b>	<b>20,640</b>	<b>165,461</b>	<b>186,101</b>	<b>23,056</b>	<b>178,543</b>	<b>201,599</b>
i Public	4,454	140,795	145,249	6,913	149,886	156,799
ii Private	16,186	24,666	40,852	16,143	28,657	44,800
<b>2 Financial Corporations</b>	<b>14,737</b>	<b>20,172</b>	<b>34,909</b>	<b>10,237</b>	<b>24,570</b>	<b>34,807</b>
i Central Bank	-	-	-	-	-	-
ii Deposit money institutions	10,068	8,619	18,687	5,057	9,700	14,757
ii Other deposit accepting institutions	1,858	2,583	4,441	1,932	2,956	4,888
iv Financial intermediaries	2,284	7,262	9,546	2,752	9,392	12,144
v Financial auxiliaries	118	49	167	115	38	153
vi Insurance and pension funds	409	1,659	2,068	381	2,484	2,865
<b>3 Central Government</b>	<b>-</b>	<b>-</b>	<b>-</b>	<b>-</b>	<b>-</b>	<b>-</b>
<b>4 Provincial Governments</b>	<b>-</b>	<b>-</b>	<b>-</b>	<b>-</b>	<b>-</b>	<b>-</b>
<b>5 Local Governments</b>	<b>-</b>	<b>-</b>	<b>-</b>	<b>-</b>	<b>-</b>	<b>-</b>
<b>6 Household</b>	<b>-</b>	<b>-</b>	<b>-</b>	<b>-</b>	<b>-</b>	<b>-</b>
<b>7 Non-profit institutions (NPIs) Serving Households</b>	<b>-</b>	<b>-</b>	<b>-</b>	<b>-</b>	<b>-</b>	<b>-</b>
<b>8 Non-residents</b>	<b>411</b>	<b>223</b>	<b>634</b>	<b>372</b>	<b>143</b>	<b>515</b>
<b>Total (A+B)</b>	<b>59,279</b>	<b>227,131</b>	<b>286,410</b>	<b>62,157</b>	<b>250,497</b>	<b>312,654</b>

## 2.14 Currency in Circulation

( Million Rupees )

END OF PERIOD		Subsidiary Coins	One Rupee Coins and above	Five Rupee Bills & above	Total ( 1+2+3 )	Held by Banking Department of SBP	Held by Issue Department of SBP	Currency In tills of Scheduled Banks	Currency In Circulation (4-5-6-7)
		1	2	3	4	5	6	7	8
2003	Dec.	662	4,405	595,285	<b>600,352</b>	126	2,435	30,273	<b>567,517</b>
2004	Jun.	664	4,941	611,904	<b>617,508</b>	161	2,799	36,432	<b>578,116</b>
	Dec.	667	5,574	691,072	<b>697,313</b>	126	3,068	38,836	<b>655,283</b>
2005	Jun.	667	6,093	705,720	<b>712,480</b>	146	2,961	43,472	<b>665,901</b>
	Dec.	667	6,618	769,617	<b>776,902</b>	157	2,470	42,527	<b>731,749</b>
2006	Jun.	667	6,931	784,236	<b>791,834</b>	139	2,865	48,439	<b>740,391</b>
	Dec.	667	6,933	917,809	<b>925,408</b>	141	2,640	48,367	<b>874,260</b>
2007	Jun.	667	7,441	893,293	<b>901,401</b>	136	3,012	58,072	<b>840,181</b>
	Dec.	667	7,461	1,070,960	<b>1,079,088</b>	156	2,730	68,371	<b>1,007,831</b>
2008	Jun. <sup>P</sup>	667	7,667	1,045,857	<b>1,054,191</b>	182	2,718	68,966	<b>982,325</b>
2007	Jun.	667	7,441	893,293	<b>901,401</b>	136	3,012	58,072	<b>840,181</b>
	Jul.	667	7,496	895,504	<b>903,667</b>	190	2,978	53,416	<b>847,083</b>
	Aug.	667	7,398	894,002	<b>902,067</b>	160	2,945	53,178	<b>845,784</b>
	Sep.	667	7,499	927,990	<b>936,156</b>	193	2,867	58,176	<b>874,919</b>
	Oct.	667	7,469	969,842	<b>977,978</b>	163	2,820	57,405	<b>917,590</b>
	Nov.	667	7,501	992,576	<b>1,000,744</b>	195	2,786	55,132	<b>942,631</b>
	Dec.	667	7,461	1,070,960	<b>1,079,088</b>	156	2,730	68,371	<b>1,007,831</b>
2008	Jan.	667	7,432	1,040,269	<b>1,048,368</b>	126	2,709	56,288	<b>989,245</b>
	Feb.	667	7,428	1,050,242	<b>1,058,337</b>	130	2,687	54,429	<b>1,001,090</b>
	Mar.	667	7,501	1,040,450	<b>1,048,617</b>	196	2,659	63,761	<b>982,001</b>
	Apr.	667	7,457	1,044,473	<b>1,052,596</b>	146	2,632	56,757	<b>993,061</b>
	May.	667	7,471	1,051,807	<b>1,059,944</b>	166	2,586	59,380	<b>997,813</b>
	Jun. <sup>P</sup>	667	7,667	1,045,857	<b>1,054,191</b>	182	2,718	68,966	<b>982,325</b>

Note      The quarter end data relate to last working day whereas monthly data are of last Saturday of the month  
 .  
 Totals may not tally due to separate rounding off.

Source: Monetary. Policy Department  
SBP

## 2.15 Government Budgetary Borrowing from Banks

(Million Rupees)

Item	Stocks		Monetary Impact During	
	30-Jun-07	30-Jun-06	Ist July 07 to 31 <sup>st</sup> May. 2008	Ist July 07 to 2 <sup>nd</sup> Jun. 2007
<b>1. Central Government (a+b)</b>	<b>1,014,152</b>	<b>875,718</b>	<b>406,459</b>	<b>164,380</b>
a. Scheduled Banks	617,528	422,156	-175,870	188,080
T-Bills and Securities	830,347	589,552	-151,648	213,969
Less:				
Government Deposits	212,819	167,396	24,222	25,889
b. State Bank	396,624	453,563	582,329	-23,701
T-bills and Securities etc.	461,619	517,507	537,418	-2,389
Debtor Balances (Excluding Zakat Fund)	0	0	0	0
Less:				
Government Deposits (Excluding Zakat and Privatization Fund)	78,430	76,865	-44,911	21,681
Others	-13,435	-12,921	0	-369
<b>2. Provincial Governments (c+d)</b>	<b>-204,099</b>	<b>-167,681</b>	<b>-41,950</b>	<b>-31,570</b>
c. Scheduled Banks	-152,466	-117,684	-22,200	-28,806
Government and Others	1,100	1,101	0	-1
Less:				
Government Deposits	153,566	118,785	22,200	28,805
d. State Bank	-51,633	-49,997	-19,750	-2,793
Government Securities	0	0	0	0
Debtor Balances (Excluding Zakat Fund)	10,821	16,404	4,660	-9,754
Less:				
Government Deposits (Excluding Zakat Fund)	62,454	66,401	24,410	-6,990
<b>Net Budgetary Borrowing from the Banking System</b>	<b>810,053</b>	<b>708,037</b>	<b>364,509</b>	<b>132,810</b>

Source: Monetary Policy Department, SBP

## 2.16 Government Borrowing for Commodity Operations

(Million Rupees)

Commodity	Stocks		Monetary Impact During	
	30-Jun-07	30-Jun-06	Ist July 07 to 31 <sup>st</sup> May. 2008	Ist July 07 to 2 <sup>nd</sup> Jun. 2007
Rice	2,224	3,461	-2,215	-1,238
Wheat	62,049	73,127	64,086	-11,331
Sugar	25,285	18,082	4,472	7,672
Fertilizer	6,227	6,544	1,131	-326
Seeds	95	252	-6	-177
Oilseeds	0	0	0	0
Pulses	106	10	-106	25
Edible Oil	1,266	1,842	-1,256	-577
Black Mash	57	0	762	66
Chillies	0	0	0	0
S. Meal	27	82	-27	-55
Gram	0	34	1,619	-34
Onion	50	151	-50	-101
Potatoes	0	0	0	0
Cotton	1,166	4,175	73	-3,023
<b>Total</b>	<b>98,552</b>	<b>107,761</b>	<b>68,483</b>	<b>-9,098</b>

Source: Monetary Policy Department, SBP