

2.1 Pakistan Monetary Survey

(Depository Corporation Survey)

(Million Rupees)

Description	2004		2005		2006			
	Jun.	Dec.	Jun.	Dec.	May	Jun.	Jul.	Aug.
Net Foreign Assets	629,893	631,752	687,363	621,354	715,792	764,545	720,607	708,884
Claims on non-residents	892,268	907,190	947,484	877,489	973,389	1,017,100	972,481	964,077
<i>Less: Liabilities to non-residents</i>	262,375	275,438	260,121	256,135	257,597	252,555	251,874	255,193
Domestic Credit	2,010,581	2,316,995	2,517,385	2,887,520	2,984,299	3,020,518	3,074,776	3,097,510
Net claims on General government ¹	621,332	650,300	713,755	781,182	813,921	812,543	852,125	869,961
Net claims on Central government	698,825	749,251	808,055	882,427	925,848	928,166	962,617	983,483
Claims on Central Govt.	828,774	888,647	998,713	1,129,834	1,161,720	1,176,896	1,201,632	1,224,447
<i>Less: Liabilities to Central Govt.</i>	129,949	139,396	190,658	247,407	235,872	248,730	239,015	240,964
Net claims on Provincial governments ²	(77,493)	(98,951)	(94,300)	(101,245)	(111,927)	(115,623)	(110,492)	(113,522)
Claims on Provincial Govts.	37,765	29,381	44,556	49,486	65,235	69,790	71,763	69,967
<i>Less: Liabilities to Provincial Govts.</i>	115,258	128,332	138,856	150,731	177,162	185,413	182,255	183,489
Claims on Private sectors	1,195,888	1,465,259	1,600,931	1,861,899	1,929,374	1,957,418	1,958,082	1,969,847
Claims on NFPSEs	115,787	110,457	106,431	124,893	131,045	136,209	135,339	136,360
Claims on NBFIs Depository & Non Depository	77,574	90,979	96,268	119,546	109,959	114,348	129,230	121,342
Broad Money Liabilities	2,474,647	2,725,437	2,965,174	3,201,675	3,344,174	3,417,389	3,366,705	3,368,854
Currency outside Depository Corporations (Banks)	577,019	656,478	666,414	732,011	749,307	741,349	741,114	736,805
Transferable/Demand deposits	1,597,717	1,728,576	1,845,800	1,742,562	1,905,870	1,988,931	1,952,171	1,926,869
Other deposits (Quasi-Money)	299,911	340,383	452,960	727,102	688,997	687,109	673,420	705,180
Public sector funds/deposits (SBP)	22,108	22,862	23,714	23,028	23,205	23,225	23,225	23,253
Counterpart funds	628	648	539	525	539	546	546	548
Other items (Net) ³	143,030	199,362	215,208	283,549	332,090	343,824	404,825	413,664
Other liabilities	559,008	675,946	684,454	778,772	852,720	865,360	966,720	957,761
<i>less: Other assets</i>	415,978	476,584	469,246	495,223	520,630	521,536	561,895	544,097
Memorandum items:								
Bank Clearings	1,096,181	1,269,601	1,416,613	1,656,863	1,802,113	1,854,688	1,669,349	1,661,977
Post Office Savings	54,790	53,901	50,661	39,257	56,074	61,418	61,115	58,608

Note: Pakistan Monetary Survey is the analytical accounts of State Bank of Pakistan and Scheduled banks based on monthly reporting closely in the line with MFSM. Data relates to last working day of the month.

2.1 Pakistan Monetary Survey

(Depository Corporation Survey)

(Million Rupees)

Description	2006				2007			
	Sep	Oct.	Nov.	Dec.	Jan. .	Feb.	Mar.	Apr. ^P
Net Foreign Assets	715,077	711,408	699,918	760,627	779,767	801,289	838,315	842,419
Claims on non-residents	968,719	967,365	956,678	1,014,788	1,033,791	1,057,800	1,093,507	1,095,317
<i>Less: Liabilities to non-residents</i>	253,642	255,957	256,760	254,161	254,024	256,511	255,192	252,898
Domestic Credit	3,111,057	3,184,108	3,248,963	3,305,390	3,267,055	3,312,953	3,380,376	3,380,376
Net claims on General government ¹	852,522	889,330	885,760	831,611	815,717	856,914	884,215	935,806
Net claims on Central Govt.	974,634	987,797	1,007,007	966,381	977,959	1,033,022	1,095,518	1,117,864
Claims on Central Govt.	1,218,721	1,239,954	1,257,356	1,202,688	1,209,497	1,263,883	1,320,640	1,351,714
<i>Less: Liabilities to Central Govt.</i>	244,087	252,157	250,349	236,307	231,538	230,861	225,122	233,850
Net claims on Provincial	(122,112)	(98,467)	(121,247)	(134,770)	(162,242)	(176,108)	(211,303)	(182,058)
Claims on Provincial Govts.	70,160	67,674	59,783	41,880	34,130	30,053	21,009	21,661
<i>Less: Liabilities to Provincial</i>	192,272	166,141	181,030	176,650	196,372	206,161	232,312	203,719
Claims on Private sectors	1,992,428	2,036,593	2,104,141	2,198,651	2,191,180	2,194,627	2,217,475	2,226,066
Claims on NFPSEs	141,668	131,472	129,783	136,126	129,132	129,891	139,078	140,754
Claims on NBFIs Depository & Non Depository	124,439	126,713	129,279	139,002	131,026	131,521	139,608	147,554
Broad Money Liabilities	3,419,244	3,477,522	3,517,580	3,670,769	3,621,136	3,683,890	3,779,719	3,808,905
Currency outside Depository Corporations (Banks)	770,635	826,098	811,985	874,597	829,812	830,282	834,993	836,236
Transferable/Demand deposits	1,933,591	1,928,275	1,963,875	1,985,421	2,010,404	2,017,243	2,065,802	2,090,276
Other deposits (Quasi-Money)	715,018	723,149	741,720	810,751	780,920	836,365	878,924	882,393
Public sector funds/deposits (SBP)	23,253	23,280	23,400	23,419	23,419	23,446	23,446	23,446
Counterpart funds	557	557	504	512	512	514	509	511
Other items (Net) ³	383,004	394,081	407,324	371,257	401,633	406,325	414,957	459,679
Other liabilities	981,428	1,016,718	997,066	1,006,064	1,043,476	1,046,925	1,052,249	1,110,391
<i>less: Other assets</i>	598,424	622,637	589,742	634,807	641,843	640,600	637,292	650,712
Memorandum items:								
Bank Clearings	1,665,657	1,512,439	1,711,131	1,888,611	1,558,812	1,699,689	1,906,608	1,786,231
Post Office Savings	56,020	54,455	51,723	52,977	53,113	57,637	61,127	61,127

1. General Government includes Central Government and Provincial Governments

2. Provincial Governments include Provincial Governments and Local Governments

3. *Other Liabilities* include Liabilities to scheduled banks, paid up capital and reserve accounts, Other liabilities from State bank and liabilities to State bank from scheduled banks. *Other assets* include claims on banks, other assets from State bank and claims on State bank from scheduled banks.

2.2 Analytical Accounts of State Bank of Pakistan

(Central Bank Survey)

(Million Rupees)

Description	2004		2005		2006			
	Jun.	Dec.	Jun.	Dec.	May	Jun.	Jul.	Aug.
Net Foreign Assets	557,419	482,210	555,306	523,044	607,796	639,843	612,338	613,263
Claims on non-residents (Foreign Assets)	788,988	719,586	784,327	747,854	832,049	864,062	835,366	836,789
a) Monetary Gold Coin and Bullion	48,305	48,305	54,746	54,746	54,746	77,558	77,558	77,558
b) Holding of SDRs	13,827	14,449	13,569	12,915	13,426	13,124	13,135	13,136
c) Foreign Currency	5,515	744	767	3,176	2,552	3,126	3,804	2,062
d) Securities other than shares (Foreign)	500,312	421,873	472,514	414,829	543,452	555,312	523,348	522,473
e) Deposits	132,021	147,058	139,513	167,965	125,589	121,824	125,223	129,271
f) Loans	-	-	-	-	-	-	-	-
g) Financial Derivatives	-	-	-	-	-	-	-	-
h) Others	89,008	87,157	103,218	94,223	92,284	93,118	92,298	92,289
<i>Of which Quota - IMF</i>	88,097	86,246	90,312	93,254	91,315	92,156	91,315	91,315
Less: Liabilities to non-residents (Foreign)	231,569	237,376	229,021	224,810	224,253	224,219	223,028	223,526
a) Deposits	41,076	41,855	42,066	42,036	42,293	42,207	42,301	42,341
b) Securities other than shares (N.N.N.I.B)	105,654	94,867	90,301	85,268	84,697	85,259	84,279	84,279
c) Financial Derivatives	-	-	-	-	-	-	-	-
d) Loans (IMF Loan 1 & PRGF and SDF)	84,839	100,653	96,654	97,506	97,263	96,753	96,448	96,906
e) Other (IMF Administration Charges)	-	-	-	-	-
Claims on other Depository Corporations	196,005	207,726	210,377	214,573	219,373	218,359	218,298	186,218
a) Loans and Advances	161,888	173,609	181,987	186,183	193,506	193,579	193,518	161,438
b) Internal Bills Purchased and Discounted	116	116	116	116	116	116	116	116
c) Investment in Share Capital	34,001	34,001	28,274	28,274	25,751	24,664	24,664	24,664
Net claims on General government ¹	91,200	297,904	248,818	390,412	332,176	383,912	397,491	442,869
Net claims on Central Govt.	119,875	335,401	283,636	434,036	395,662	434,153	445,298	491,490
Claims on Central Govt.	139,698	361,645	347,862	542,609	491,897	525,082	529,313	574,766
a) Securities	134,093	355,399	332,129	535,481	484,439	517,625	521,615	567,309
b) Other Claims	5,605	6,245	15,733	7,128	7,458	7,457	7,698	7,457
Less: Liabilities to Central Government	19,823	26,244	64,226	108,573	96,235	90,929	84,015	83,276
a) Deposits	19,823	26,244	64,226	108,573	96,235	90,929	84,015	83,276
b) Other Liabilities	-	-	-	-	-	-	-	-

Note: Analytical accounts are the statistical presentation of monetary statistics of State Bank of Pakistan based on monthly reporting closely in the line with MFSM.

2.2 Analytical Accounts of State Bank of Pakistan

(Central Bank Survey)

(Million Rupees)

Description	2004		2005		2006			
	Jun	Dec.	Jun.	Dec.	May	Jun.	Jul.	Aug.
Net claims on Provincial governments ²	(28,675)	(37,497)	(34,818)	(43,624)	(63,486)	(50,241)	(47,807)	(48,621)
Claims on Provincial governments	5,533	7,242	10,814	14,503	13,579	16,404	16,858	15,049
a) Securities	-	-	-	-	-	-	-	-
b) Other Claims	5,533	7,242	10,814	14,503	13,579	16,404	16,858	15,049
Less: Liabilities to Provincial Govts.	34,208	44,739	45,632	58,127	77,065	66,645	64,665	63,670
a) Deposits	34,208	44,739	45,632	58,127	77,065	66,645	64,665	63,670
b) Other Liabilities	-	-	-	-	-	-	-	-
Claims on other sectors	23,387	18,774	16,927	15,415	15,661	15,889	16,089	16,089
a) Other financial corporations	23,387	18,774	16,927	15,415	15,661	15,889	16,089	16,089
1) Loans and advances to NBFIs	21,640	17,027	15,254	13,742	13,988	14,216	14,416	14,416
2) Investment in NBFIs shares	1,747	1,747	1,673	1,673	1,673	1,673	1,673	1,673
b) Other resident sectors	-	-	-	-	-	-	-	-
Monetary Base (Reserve Money)	772,869	895,963	909,013	985,352	1,006,960	1,001,334	1,041,454	1,049,657
a) Currency in circulation	577,019	656,478	666,414	732,011	749,307	741,349	741,114	736,805
b) Liabilities to other Depository Corps.	193,734	233,993	239,264	250,014	253,858	255,054	295,766	308,201
1) Reserve deposits (Banker's deposits)	156,204	196,348	196,302	207,750	206,358	207,574	247,701	262,353
2) Other liabilities (Currency in scheduled banks)	37,530	37,645	42,962	42,264	47,500	47,480	48,065	45,848
c) Deposits included in broad money (Private sector deposits)	2,116	5,492	3,335	3,327	3,795	4,931	4,574	4,651
Public sector funds/deposits	22,108	22,862	23,714	23,028	23,205	23,225	23,225	23,253
Counterpart funds	628	648	539	525	539	546	546	548
Paid up Capital and Reserve	5,515	5,515	5,515	15,514	15,514	15,514	15,514	15,514
Other items (Net) ³	66,891	81,624	92,644	119,024	128,789	217,385	163,476	169,465
Other Liabilities	97,472	115,347	120,364	152,376	179,556	270,905	217,472	227,190
Less: Other Assets	30,581	33,723	27,720	33,352	50,767	53,520	53,996	57,725
Plus: Consolidation adjustments	-	-	-	-	-	-	-	-

P: Provincial

2.2 Analytical Accounts of State Bank of Pakistan

(Central Bank Survey)

(Million Rupees)

Description	2006				2007			
	Sep.	Oct.	Nov.	Dec.	Jan.	Feb.	Mar.	Apr. ^P
Net Foreign Assets	608,987	616,601	604,347	642,680	656,684	666,699	682,889	697,248
Claims on non-residents (Foreign Assets)	832,201	838,491	827,424	865,562	878,089	888,692	905,128	919,115
a) Monetary Gold Coin and Bullion	77,558	77,558	77,558	77,558	77,558	77,558	77,558	77,558
b) Holding of SDRs	13,094	13,084	13,332	13,122	12,988	13,013	13,069	13,230
c) Foreign Currency	3,108	1,824	1,494	2,792	4,481	4,244	3,203	2,829
d) Securities other than shares (Foreign)	500,134	526,343	511,633	549,365	544,173	559,037	581,790	600,770
e) Deposits	146,018	127,385	131,121	128,434	142,796	140,510	137,224	130,207
f) Loans	-	-	-	-	-	-	-	-
g) Financial Derivatives	-	-	-	-	-	-	-	-
h) Others	92,289	92,297	92,286	94,291	96,093	94,330	92,284	94,521
<i>Of which Quota - IMF</i>	91,315	91,315	91,315	91,315	91,315	91,315	91,315	91,315
Less: Liabilities to non-residents (Foreign)	223,214	221,890	223,077	222,882	221,405	221,993	222,239	221,867
a) Deposits	42,449	42,483	42,636	42,671	42,557	42,542	42,564	42,508
b) Securities other than shares (N.N.N.I.B)	84,139	83,860	83,860	83,581	83,442	83,442	83,302	83,009
c) Financial Derivatives	-	-	-	-	-	-	-	-
d) Loans (IMF Loan 1 & PRGF and SDF)	96,626	95,547	96,581	96,630	95,406	96,009	96,373	96,350
e) Other (IMF Administration Charges)	-	-	-	-	-	-	-	-
Claims on other Depository Corporations	220,777	235,024	249,854	275,936	274,598	273,114	276,581	278,825
a) Loans and Advances	195,997	210,244	224,634	250,716	249,378	247,894	251,801	254,045
b) Internal Bills Purchased and Discounted	116	116	116	116	116	116	116	116
c) Investment in Share Capital	24,664	24,664	25,104	25,104	25,104	25,104	24,664	24,664
Net Claims on General government ¹	445,247	491,759	468,406	461,811	447,528	418,285	416,822	396,670
Net claims on Central government	504,033	523,798	510,584	505,632	511,052	483,394	499,771	452,205
Claims on Central government	584,773	603,372	588,330	575,706	577,598	541,357	555,160	509,072
a) Securities	577,316	595,915	580,873	568,249	570,141	533,531	547,334	501,246
b) Other Claims	7,457	7,457	7,457	7,457	7,457	7,826	7,826	7,826
Less: Liabilities to Central government	80,740	79,574	77,746	70,074	66,546	57,963	55,389	56,867
a) Deposits	80,740	79,574	77,746	70,074	66,546	57,963	55,389	56,867
b) Other Liabilities	-	-	-	-	-	-	-	-

Revaluation Procedure:

- Gold is revalued at the end of financial year (June end) on the basis of closing London Market Rate.
- SDR holdings (with IMF and SBP) are revalued on weekly basis.
- IMF related balances, IMF Account No.1, IMF Account No. 2, IMF securities account and IMF quota account, are revalued at the close of IMF financial year i.e. 30th April and also 30th June of SBP.

2.2 Analytical Accounts of State Bank of Pakistan

(Central Bank Survey)

(Million Rupees)

Description	2006				2007			
	Sep.	Oct.	Nov.	Dec.	Jan.	Feb.	Mar.	Apr. ^P
Net claims on Provincial governments ²	(58,786)	(32,039)	(42,178)	(43,821)	(63,524)	(65,109)	(82,949)	(55,535)
Claims on Provincial governments	15,733	15,725	14,318	6,560	6,057	10,990	9,534	10,713
a) Securities	-	-	-	-	-	-	-	-
b) Other Claims	15,733	15,725	14,318	6,560	6,057	10,990	9,534	10,713
Less: Liabilities to Provincial Govts.	74,519	47,764	56,496	50,381	69,581	76,099	92,483	66,248
a) Deposits	74,519	47,764	56,496	50,381	69,581	76,099	92,483	66,248
b) Other Liabilities	-	-	-	-	-	-	-	-
Claims on other sectors	16,089	16,089	16,110	17,819	17,264	16,162	16,143	16,268
a) Other financial corporations	16,089	16,089	16,110	17,819	17,264	16,162	16,143	16,268
1) Loans and advances to NBFIs	14,416	14,416	14,437	16,146	15,591	14,489	14,030	14,155
2) Investment in NBFIs shares	1,673	1,673	1,673	1,673	1,673	1,673	2,113	2,113
b) Other resident sectors	-	-	-	-	-	-	-	-
Monetary Base (Reserve Money)	1,077,005	1,142,122	1,112,708	1,191,780	1,156,430	1,156,642	1,151,961	1,162,449
a) Currency in circulation	770,635	826,098	811,985	874,597	829,812	830,282	834,993	836,236
b) Liabilities to other Depository Corps.	301,600	311,045	295,803	312,385	321,788	321,468	311,373	320,114
1) Reserve deposits (Banker's deposits)	255,091	255,765	246,491	264,356	265,468	269,546	262,228	267,457
2) Other liabilities (Currency in scheduled banks)	46,509	55,280	49,312	48,029	56,320	51,922	49,145	52,657
c) Deposits included in broad money (Private sector deposits)	4,770	4,979	4,920	4,798	4,830	4,892	5,595	6,099
Public sector funds/deposits	23,253	23,280	23,400	23,419	23,419	23,446	23,446	23,446
Counterpart funds	557	557	504	512	512	514	509	511
Paid up Capital and Reserve	15,514	15,514	34,656	34,656	34,656	34,656	34,656	34,656
Other items (Net) ³	174,771	177,998	167,448	147,881	181,055	159,002	181,864	167,949
Other Liabilities	251,098	257,772	218,524	200,070	232,855	213,093	238,836	223,509
Less: Other Assets	76,327	79,774	51,076	52,189	51,800	54,091	56,972	55,560
Plus: Consolidation adjustments	-	-	-	-	-	-	-	-

1. General Government includes Central Government and Provincial Governments

2. Provincial Governments includes Provincial Governments and Local Governments

3. *Other Liabilities* include Liabilities to scheduled banks, paid up capital and reserve accounts, Other liabilities from State bank and liabilities to State bank from Scheduled banks. *Other assets* include claims on banks, other assets from State bank and claims on State bank from scheduled banks.

2.3 Analytical Accounts of Scheduled Banks

(Other Depository Corporations Survey)

(Million Rupees)

Description	2004		2005		2006			
	Jun.	Dec.	Jun.	Dec.	May.	Jun.	Jul.	Aug.
Net Foreign Assets	72,474	149,542	132,057	98,310	107,996	124,702	108,269	95,621
Claims on non-residents (Foreign Assets)	103,280	187,604	163,157	129,635	141,340	153,038	137,115	127,288
a) Foreign currency	4,960	6,362	6,806	7,350	6,218	6,415	6,497	6,950
b) Deposits	40,101	122,165	88,742	56,170	59,808	70,327	55,844	47,844
c) Securities other than shares ¹	58,219	59,077	67,609	66,115	75,314	76,296	74,774	72,494
d) Loans	-	-	-	-	-	-	-	-
e) Financial derivatives	-	-	-	-	-	-	-	-
f) Other	-	-	-	-	-	-	-	-
Less: Liabilities to non-residents	30,806	38,062	31,100	31,325	33,344	28,336	28,846	31,667
a) Deposits	21,602	23,982	24,777	27,366	25,626	23,910	23,418	23,791
b) Securities other than shares	-	-	-	-	-	-	-	-
c) Financial derivatives	-	-	-	-	-	-	-	-
d) Loans	9,204	14,080	6,323	3,959	7,718	4,426	5,428	7,876
e) Other	-	-	-	-	-	-	-	-
Claims on central bank	189,393	235,135	231,150	247,298	250,490	249,658	289,601	300,154
a) Currency	37,263	37,645	42,962	42,265	47,500	47,480	48,065	45,848
b) Reserve deposits	152,130	197,490	188,188	205,033	202,990	202,178	241,536	254,306
c) Other Claims	-	-	-	-	-	-	-	-
Net claims on General Government ²	530,132	352,396	464,937	390,770	481,745	428,631	454,634	427,092
Net claims on Central Govt.	578,950	413,850	524,419	448,391	530,186	494,013	517,319	491,993
Claims on Central Govt.	689,076	527,002	650,851	587,225	669,823	651,814	672,319	649,681
a) Securities	670,536	490,793	600,743	551,012	625,862	597,924	613,929	590,239
b) Other claims	18,540	36,209	50,108	36,213	43,961	53,890	58,390	59,442
Less: Liabilities to Central Govt.	110,126	113,152	126,432	138,834	139,637	157,801	155,000	157,688
a) Deposits	110,126	113,152	126,432	138,834	139,637	157,801	155,000	157,688
b) Other Liabilities	-	-	-	-	-	-	-	-
Net claims on provincial governments ³	(48,818)	(61,454)	(59,482)	(57,621)	(48,441)	(65,382)	(62,685)	(64,901)
Claims on provincial governments	32,232	22,139	33,742	34,983	51,656	53,386	54,905	54,918
a) Securities	80	92	80	79	76	76	76	76
b) Other claims	32,152	22,047	33,662	34,904	51,580	53,310	54,829	54,842
Less: Liabilities to prov. governments	81,050	83,593	93,224	92,604	100,097	118,768	117,590	119,819
a) Deposits	81,050	83,593	93,224	92,604	100,097	118,768	117,590	119,819
b) Other liabilities	-	-	-	-	-	-	-	-

Note: Analytical accounts are the statistical presentation of monetary statistics of Scheduled Banks based on monthly reporting closely in the line with MFSM.

2.3 Analytical Accounts of Scheduled Banks

(Other Depository Corporations Survey)

(Million Rupees)

Description	2004		2005		2006			
	Jun	Dec.	Jun.	Dec.	May.	Jun.	Jul.	Aug.
Claims on other sectors	1,365,862	1,647,921	1,786,703	2,090,923	2,154,717	2,192,086	2,206,562	2,211,460
a) Other financial corporations	54,187	72,205	79,341	104,131	94,298	98,459	113,141	105,253
b) Public non financial corporations	115,787	110,457	106,431	124,893	131,045	136,209	135,339	136,360
c) Other non financial corporations	514,963	619,349	646,467	753,767	800,111	798,577	806,987	798,592
d) Other resident sectors	680,925	845,910	954,464	1,108,132	1,129,263	1,158,841	1,151,095	1,171,255
Liabilities to Central Bank	163,350	176,890	189,678	192,709	201,534	202,157	200,953	169,991
Deposits included in broad money	1,895,512	2,063,467	2,295,425	2,466,337	2,591,072	2,671,109	2,621,017	2,627,398
Transferable deposits (Demand deposits)	1,595,601	1,723,084	1,842,465	1,739,235	1,902,075	1,984,000	1,947,597	1,922,218
a) Other financial corporations	16,896	20,977	16,276	31,460	30,372	31,267	32,437	33,999
b) Public non financial corporations	119,825	137,688	124,015	122,578	116,664	124,708	106,957	105,140
c) Other non financial corporations	-	553,987	593,068	563,885	570,052	593,012	593,012	288,054
d) Other resident sectors	1,458,880	1,010,432	1,109,106	1,021,312	1,184,987	1,235,013	1,215,191	1,495,025
Other deposits /Time deposits	299,911	340,383	452,960	727,102	688,997	687,109	673,420	705,180
a) Other financial corporations	5,101	6,083	7,617	13,913	13,748	18,842	17,403	16,094
b) Public non financial corporations	70,876	63,026	93,133	148,919	136,216	131,483	142,880	157,429
c) Other non financial corporations	-	90,721	109,393	150,033	180,112	171,011	171,011	170,888
d) Other resident sectors	223,934	180,553	242,817	414,237	358,921	365,773	342,126	360,769
Deposits Excluded from broad money	26,153	23,027	29,906	49,022	33,259	54,626	35,861	29,213
Loans	30,883	30,190	24,878	47,878	141,570	165,957	158,990	166,732
Of which: Other financial corporations	1,408	680	672	1,540	2,616	1,448	1,093	927
Financial Derivatives	-	-	-	-	-	-	-	-
Central Govt. Lending Fund	9,486	9,314	9,314	9,314	9,314	9,314	9,314	9,314
Shares and Other equity	140,640	167,127	201,521	225,803	245,230	246,334	264,640	264,678
a) Funds contributed by owners	80,149	84,836	98,086	106,250	118,490	121,198	122,787	125,753
b) Retained earnings	(14,872)	2,298	4,655	11,896	31,855	29,798	28,602	26,470
c) General & Special Reserves	62,479	66,463	85,548	88,150	95,745	95,997	96,793	97,966
d) Valuation adjustment	12,884	13,530	13,232	19,507	(860)	(659)	16,458	14,489
Other items (net)	(108,224)	(85,457)	(135,985)	(163,858)	(227,115)	(354,500)	(231,790)	(233,072)
Other liabilities	725,409	681,538	762,030	835,862	706,106	790,449	812,480	859,002
Less: Other Assets	833,633	766,995	898,015	999,720	933,221	1,144,949	1,044,270	1,092,074
Plus Consolidation adjustment	-	-	-	-	-	-	-	-

Other Liabilities include Liabilities to scheduled banks, paid up capital and reserve accounts, Other liabilities from State bank and liabilities to State bank from Scheduled banks. *Other assets* include Claims on banks, Other assets from State bank and Claims on State bank from scheduled banks

2.3 Analytical Accounts of Scheduled Banks

(Other Depository Corporations Survey)

(Million Rupees)

Description	2006				2007			
	Sep.	Oct.	Nov.	Dec.	Jan.	Feb.	Mar.	Apr. ^P
Net Foreign Assets	106,090	94,807	95,571	117,947	123,083	134,590	155,426	145,171
Claims on non-residents (Foreign Assets)	136,518	128,874	129,254	149,226	155,702	169,108	188,379	176,202
a) Foreign currency	7,489	8,734	8,111	9,546	8,463	9,292	9,212	8,960
b) Deposits	57,467	49,163	48,454	65,003	77,127	87,400	104,943	91,834
c) Securities other than shares ¹	71,562	70,977	72,689	74,677	70,112	72,416	74,224	75,408
d) Loans	-	-	-	-	-	-	-	-
e) Financial derivatives	-	-	-	-	-	-	-	-
f) Other	-	-	-	-	-	-	-	-
Less: Liabilities to non-residents	30,428	34,067	33,683	31,279	32,619	34,518	32,953	31,031
a) Deposits	23,548	23,541	25,530	26,283	26,527	26,808	27,061	25,159
b) Securities other than shares	-	-	-	-	-	-	-	-
c) Financial derivatives	-	-	-	-	-	-	-	-
d) Loans	6,880	10,526	8,153	4,996	6,092	7,710	5,892	5,872
e) Other	-	-	-	-	-	-	-	-
Claims on central bank	301,320	307,840	288,812	306,682	315,445	313,395	303,740	316,327
a) Currency	46,509	55,280	49,312	48,029	56,320	51,921	49,145	52,657
b) Reserve deposits	254,811	252,560	239,500	258,653	259,125	261,474	254,595	263,670
c) Other Claims	-	-	-	-	-	-	-	-
Net claims on General government ²	407,275	397,571	417,354	369,800	368,189	438,629	467,393	539,136
Net claims on Central government	470,601	463,999	496,423	460,749	466,907	549,628	595,747	665,659
Claims on Central government	633,948	636,582	669,026	626,982	631,899	722,526	765,480	842,642
a) Securities	573,284	576,260	610,203	568,506	574,797	666,371	713,029	793,891
b) Other claims	60,664	60,322	58,823	58,476	57,102	56,155	52,451	48,751
Less: Liabilities to Central government	163,347	172,583	172,603	166,233	164,992	172,898	169,733	176,983
a) Deposits	163,347	172,583	172,603	166,233	164,992	172,898	169,733	176,983
b) Other Liabilities	-	-	-	-	-	-	-	-
Net Claims on Provincial governments ³	(63,326)	(66,428)	(79,069)	(90,949)	(98,718)	(110,999)	(128,354)	(126,523)
Claims on Provincial governments	54,427	51,949	45,465	35,320	28,073	19,063	11,475	10,948
a) Securities	90	76	75	75	75	75	75	75
b) Other claims	54,337	51,873	45,390	35,245	27,998	18,988	11,400	10,873
Less: Liabilities to Prov. governments	117,753	118,377	124,534	126,269	126,791	130,062	139,829	137,471
a) Deposits	117,753	118,377	124,534	126,269	126,791	130,062	139,829	137,471
b) Other liabilities	-	-	-	-	-	-	-	-

P: Provincial

2.3 Analytical Accounts of Scheduled Banks

(Other Depository Corporations Survey)

(Million Rupees)

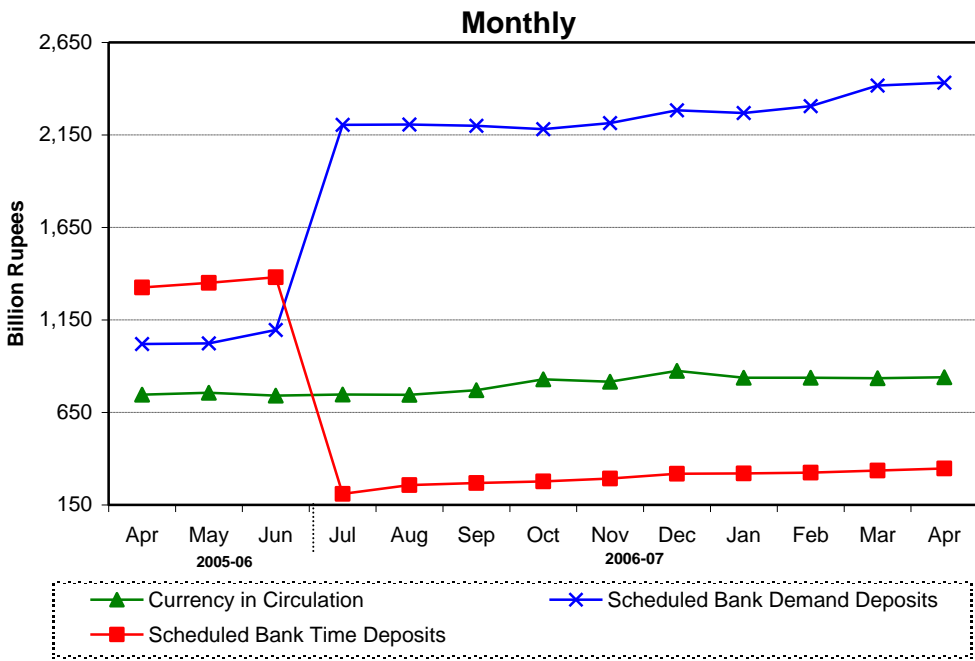
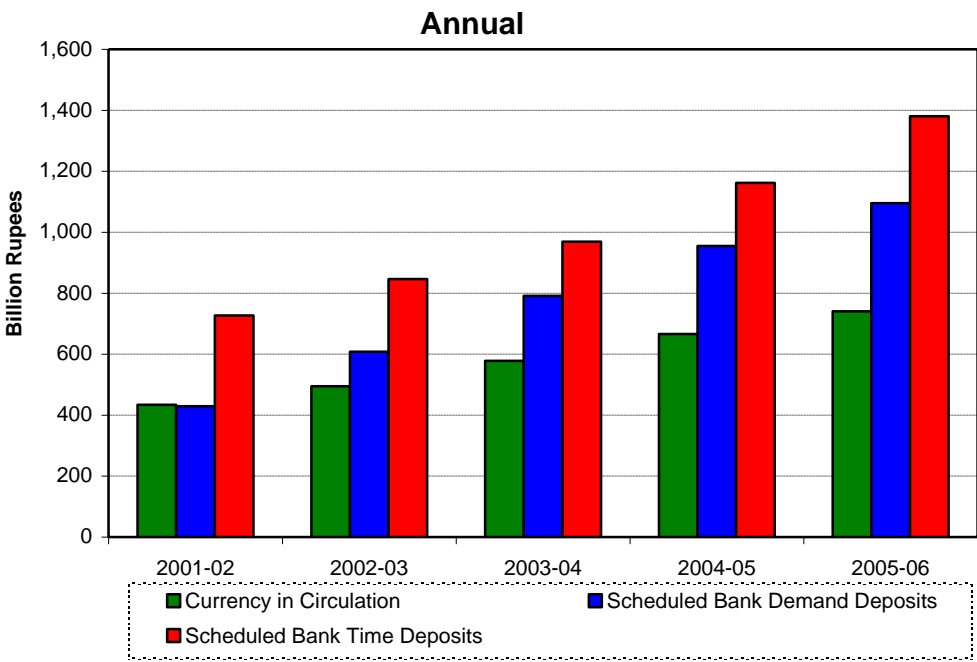
Description	2006				2007			
	Sep.	Oct.	Nov.	Dec.	Jan.	Feb.	Mar.	Apr. ^P
Claims on other sectors	2,242,446	2,278,689	2,347,093	2,455,960	2,434,074	2,439,877	2,480,018	2,498,106
a) Other financial corporations	108,350	110,624	113,169	121,183	113,762	115,359	123,465	131,286
b) Public non financial corporations	141,668	131,472	129,783	136,126	129,132	129,891	139,078	140,754
c) Other non financial corporations	805,197	830,980	867,710	906,975	898,815	913,581	917,320	921,836
d) Other resident sectors	1,187,231	1,205,613	1,236,431	1,291,676	1,292,365	1,281,046	1,300,155	1,304,230
Liabilities to Central Bank	204,376	218,229	231,166	255,829	255,967	252,830	258,082	260,586
Deposits included in broad money	2,643,839	2,646,445	2,700,675	2,791,374	2,786,494	2,848,716	2,939,131	2,966,570
Transferable deposits (Demand deposits)	1,928,821	1,923,296	1,958,955	1,980,623	2,005,574	2,012,351	2,060,207	2,084,177
a) Other financial corporations	31,932	26,099	35,250	30,561	36,047	36,468	42,392	46,771
b) Public non financial corporations	103,804	95,853	119,875	83,627	109,303	109,754	111,116	118,797
c) Other non financial corporations	601,441	593,525	604,923	623,956	619,424	616,631	640,945	651,120
d) Other resident sectors	1,191,644	1,207,819	1,198,907	1,242,479	1,240,800	1,249,498	1,265,754	1,267,489
Other deposits /Time deposits	715,018	723,149	741,720	810,751	780,920	836,365	878,924	882,393
a) Other financial corporations	17,767	20,837	21,168	28,927	28,461	25,565	32,954	27,837
b) Public non financial corporations	142,612	135,419	144,406	131,955	131,391	142,064	139,664	141,100
c) Other non financial corporations	168,587	177,849	186,169	203,150	188,162	233,847	246,559	243,245
d) Other resident sectors	386,052	389,044	389,977	446,719	432,906	434,889	459,747	470,211
Deposits Excluded from broad money	33,056	41,644	51,060	64,030	52,143	53,685	52,669	46,318
Loans	169,740	135,809	145,672	159,980	124,439	164,293	129,982	153,646
<i>Of which: other financial corporations</i>	1,170	2,072	3,598	5,203	2,957	1,997	2,119	2,892
Financial Derivatives	-	-	-	-	-	-	-	-
Central Govt. Lending Fund	9,314	9,314	9,354	9,314	9,314	9,354	9,314	9,314
Shares and Other equity	270,383	280,984	281,056	317,141	321,579	342,404	379,236	400,590
a) Funds contributed by owners	126,993	126,705	127,636	165,858	134,670	134,676	180,299	188,548
b) Retained earnings	26,856	23,216	23,477	26,120	38,835	57,027	41,620	42,676
c) General & Special Reserves	98,698	111,538	110,683	109,051	129,355	131,501	138,714	146,909
d) Valuation adjustment	17,836	19,525	19,260	16,112	18,719	19,200	18,603	22,457
Other items (net)	(273,653)	(253,592)	(270,225)	(347,341)	(309,265)	(344,858)	(361,898)	(338,342)
Other liabilities	885,661	929,030	976,796	903,638	596,637	655,920	670,708	709,933
<i>Less: Other Assets</i>	1,159,314	1,182,622	1,247,021	1,250,979	905,902	1,000,778	1,032,606	1,048,275
<i>Plus Consolidation adjustment</i>	-	-	-	-	-	-	-	-

1. Including Non-residents Securities

2. General Government includes Central Government and Provincial Governments

3. Provincial Governments includes Provincial Governments and Local/City Governments

Monetary Statistics



2.4 Monetary Statistics

(Million Rupees)											
Last Saturday/ Last working day	Currency in Circulation	Other Deposits with SBP ¹	Currency in tills of Scheduled Banks	Banks' Deposits with SBP	Reserve Money (M ₀) (1+2+3+4)	Scheduled Banks' Demand Deposits ²	Narrow Money (M ₁) (1+2+6)	Scheduled Banks' Time Deposits ²	Resident Foreign Currency Deposits	Broad Money (M ₂) (7+8+9)	Money Multi- plier (10/5)
	1	2	3	4	5	6	7	8	9	10	11
2002	Jun.	433,816	13,847	26,414	110,522	584,599	429,175	876,838	727,076	157,456	3.01
	Dec.	487,746	2,127	25,510	125,152	640,534	513,007	1,002,880	779,877	130,658	2.99
2003	Jun.	494,577	3,499	30,415	140,990	669,481	608,170	1,106,246	846,321	126,138	3.10
	Dec.	567,517	3,495	30,273	145,224	746,510	698,321	1,269,335	861,809	135,019	3.04
2004	Jun.	578,116	2,116	36,432	156,204	772,868	791,413	1,371,645	969,217	145,694	3.22
	Dec.	655,283	5,499	38,836	196,348	895,966	881,046	1,541,828	1,016,729	172,493	3.05
2005	Jun.	665,901	3,335	43,472	196,302	909,010	954,998	1,624,235	1,161,823	180,295	3.26
	Dec.	731,749	3,327	42,527	207,750	985,352	1,069,604	1,804,679	1,207,666	189,525	3.25
2006	Jun.	740,390	4,931	48,439	207,574	1,001,334	1,095,260	1,840,581	1,380,418	195,501	3.41
	Dec.	874,260	4,798	48,367	264,356	1,191,781	2,282,635	3,161,693	318,621	198,719	3.09
2006	Apr.	746,197	3,799	42,092	197,523	989,612	1,019,240	1,769,236	1,325,360	192,567	3.32
	May	756,191	3,889	42,842	198,059	1,000,981	1,023,326	1,783,405	1,350,540	190,190	3.32
	Jun.	740,390	4,931	48,439	207,574	1,001,334	1,095,260	1,840,581	1,380,418	195,501	3.41
	July.	747,140	4,574	43,195	250,184	1,045,093	2,204,354	2,956,068	209,834	197,091	3.22
	Aug.	745,265	4,707	43,676	242,109	1,035,757	2,206,500	2,956,471	257,022	192,471	3.29
	Sep.	770,117	4,769	47,028	255,091	1,077,006	2,199,603	2,974,489	268,704	193,334	3.19
	Oct.	828,753	4,973	56,544	254,333	1,144,604	2,181,077	3,014,803	277,305	193,249	3.05
	Nov.	815,851	4,814	45,788	268,652	1,135,105	2,213,693	3,034,358	292,225	193,454	3.10
	Dec.	874,260	4,798	48,367	264,356	1,191,781	2,282,635	3,161,693	318,621	198,719	3.09
2007	Jan.	834,524	4,827	49,615	253,470	1,142,436	2,268,189	3,107,540	319,739	199,798	3.17
	Feb.	837,156	4,945	47,276	265,158	1,154,536	2,305,138	3,147,240	324,859	197,243	3.18
	Mar.	834,524	5,595	49,615	262,228	1,151,961	2,416,604	3,256,723	335,823	200,484	3.29
	Apr.	839,602	6,099	48,218	257,617	1,151,537	2,432,706	3,378,407	347,313	199,955	3.32

Note : The quarter end data relate to last working day whereas monthly data relate to last Saturday of the month Source: Monetary .Policy.Department.SBP
As per BSD Circular No. 9 dated 18-7-2006, the amounts of Time Deposits with tenor of less than six months have been included to Demand Deposits from July 06.

1 Excluding IMF A/c Nos. 1 & 2, SAF loan account, counterpart funds, deposits of foreign central banks, foreign governments , international organizations and deposit money banks

2 Excluding inter-bank deposits and deposits of central & provincial governments and foreign constituents

2.5 Analysis of Causative Factors for Changes in Monetary Statistics

(Million Rupees)

	2003-04			2004-05		
	Jul.-Dec.	Jan.-Jun.	Total	Jul.-Dec.	Jan.-Jun.	Total
1. Public Sector	(30,255)	88,361	58,106	30,549	65,237	95,785
i) Budgetary support	(9,721)	73,420	63,699	25,421	46,375	71,796
ii) Commodity operations	(21,248)	13,074	(8,174)	3,797	18,166	21,963
iii) Effect of Zakat fund etc.	714	1,867	2,581	1,331	695	2,026
2. Credit to Non-Government Sector (A+B+C)	151,313	164,095	315,408	268,907	149,792	418,699
(A) Credit to private Sector	180,522	144,693	325,215	284,703	153,144	437,848
i) Commercial Banks	186,629	146,829	333,458	284,581	152,149	436,731
ii) Specialized Banks	(6,107)	(2,136)	(8,243)	122	995	1,117
(B) Credit to Public Sector Enterprise (PSEs)	(24,908)	21,991	(2,917)	(11,183)	(1,506)	(12,689)
i) Autonomous Bodies	(16,168)	(4,909)	(21,077)	(1,543)	(526)	(2,069)
ii) Others	(8,227)	29,693	21,466	(8,886)	(128)	(9,014)
iii) PSEs Special Account-Debt Replacement	(513)	(2,793)	(3,306)	(754)	(852)	(1,606)
(C) Other Financial Institutions (SBP Credit to NBFIs)	(4,301)	(2,589)	(6,891)	(4,613)	(1,847)	(6,460)
3. Counterpart Funds	(21)	21	0	(21)	109	88
4. Other Items (net)	18,151	(27,339)	(9,188)	(58,244)	(30,281)	(88,525)
5. Domestic Credit Expansion (+) / Contraction (-) (1+2+3+4)	139,187	225,138	364,326	241,191	184,857	426,048
6. Foreign Assets (net)	48,272	(4,746)	43,526	3,302	50,446	53,748
7. Monetary Expansion ((5+6)	187,459	220,393	407,852	244,492	235,303	479,796

2006							
	Apr.	May	Jun.	Jul.	Aug.	Sep.	Oct.
1. Public Sector	(7,748)	49,541	21,171	40,470	7,034	(5,281)	38,935
i) Budgetary support(net)	(11,376)	13,125	7,967	36,110	4,702	(6,297)	44,302
ii) Commodity operations	3,358	36,448	13,156	3,869	2,767	(184)	(2,799)
iii) Effect of Zakat fund etc.	270	(32)	48	491	(436)	1201	(2,568)
2. Credit to Non-Government Sector (A+B+C)	555	(2,312)	64,160	(12,646)	5,663	46,749	26,818
A) Credit to private Sector	1,127	(1,881)	58,357	(12,021)	8,498	40,383	35,233
i) Commercial Banks	9,320	(5,247)	56,332	(15,136)	6,708	39,257	37,066
ii) Specialized Banks	(8,193)	3,365	2,025	3,115	1,790	1,126	(1,834)
B) Credit to Public Sector Enterprise (PSEs)	(572)	(470)	5,576	(825)	(2,835)	6,366	(8,415)
i) Autonomous Bodies	330	(1,250)	2,320	567	(3,548)	6,215	(2,055)
ii) Others	(870)	893	3,276	(1,392)	740	151	(6,333)
iii) PSEs Special Account-Debt Replacement	(32)	(114)	(20)	0	(28)	0	(27)
C) Other Financial Institutions (SBP Credit to NBFIs)	0	40	227	200	0	0	0
3. Counterpart Funds	0	(2)	(7)	0	48	(59)	0
4. Other Items (net)	(4,451)	(11,131)	(4,855)	(44,832)	40,574	(919)	(26,925)
5. Domestic Credit Expansion (+) / Contraction (-) (1+2+3+4)	(11,644)	36,096	80,468	(17,008)	53,318	40,490	38,828
6. Foreign Assets (net)	54,306	877	11,896	(36,499)	(10,348)	(9,925)	10,001
7. Monetary Expansion (+) / Contraction (-)	42,662	36,973	92,364	(53,507)	42,970	30,565	48,829

Note The composition of autonomous bodies has changed over the years. At present, WAPDA, OGDC, KESC, PTCL, PIA, and Pak. Steel are included in the autonomous bodies.

2.5 Analysis of Causative Factors for Changes in Monetary Statistics

(Million Rupees)

	2005-06			2006-07 ^P	
	Jul.-Dec.	Jan.-Jun.	Total	Jul.-Dec	Total
Public Sector	68,930	21,836	90,766	15,576	15,576
i) Budgetary support	84,881	(13,931)	70,950	32,909	32,909
ii) Commodity operations	(15,123)	35,048	19,926	(15,934)	(15,934)
iii) Effect of Zakat fund etc.	(829)	719	(110)	(1,400)	(1,400)
Credit to Non-Government Sector (A+B+C)	294,145	114,255	408,401	251,333	251,333
A) Credit to private Sector	297,651	104,146	401,797	250,782	250,782
i) Commercial Banks	295,864	121,548	417,411	248,065	248,065
ii) Specialized Banks	1,787	(17,402)	(15,615)	2,717	2,717
B) Credit to Public Sector Enterprise (PSEs)	(1,994)	9,636	7,643	(1,379)	(1,379)
i) Autonomous Bodies	(2,641)	7,396	4,755	4,475	4,475
ii) Others	(38)	2,437	2,399	(5,660)	(5,660)
iii) PSEs Special Account-Debt	686	(197)	489	(194)	(194)
(C) Other Financial Institutions (SBP Credit to NBFIs)	(1,512)	473	(1,038)	1,930	1,930
Counterpart Funds	14	(21)	(7)	34	34
Other Items (net)	(60,902)	(39,602)	(100,504)	(857)	(857)
Domestic Credit Expansion (+) /					
Contraction (-) (1+2+3+4)	302,188	96,468	398,656	266,087	266,087
Foreign Assets (net)	(66,670)	118,161	51,491	(3,553)	(3,553)
Monetary Expansion (5+6)	235,518	214,630	450,147	262,534	262,534

	2006		2007			
	Nov.	Dec.	Jan.	Feb.	Mar.	Apr.
Public Sector	(28,044)	(37,538)	(7,809)	23,694	38,929	45,091
i) Budgetary support	(21,264)	(24,643)	1,163	32,874	49,652	49,149
ii) Commodity operations	(6,923)	(12,664)	(8,534)	(9,127)	(12,445)	(4,361)
iii) Effect of Zakat fund etc.	143	(230)	(439)	(53)	1,723	303
Credit to Non-Government Sector (A+B+C)	60,300	124,450	(23,043)	(6,104)	48,165	7,651
A) Credit to private Sector	60,749	117,940	(19,620)	(4,049)	44,706	1,964
i) Commercial Banks	61,213	118,957	(22,303)	(1,508)	45,870	2,802
ii) Specialized Banks	(464)	(1,017)	2,683	(2,541)	(1,164)	(838)
B) Credit to Public Sector Enterprise (PSEs)	(470)	4,800	(3,468)	(363)	3,488	5,569
i) Autonomous Bodies	(181)	3,476	(3,137)	629	1,013	5,674
ii) Others	(176)	1,350	(331)	(965)	2,475	(105)
iii) PSEs Special Account-Debt	(113)	(26)	0	(27)	0	0
(C) Other Financial Institutions (SBP Credit to NBFIs)	21	1,709	45	(1,692)	(28)	118
Counterpart Funds	53	(7)	0	(2)	5	0
Other Items (net)	5,647	25,598	(42,562)	2,941	312	(29,786)
Domestic Credit Expansion (+) /						
Contraction (-) (1+2+3+4)	37,955	112,503	(73,415)	20,528	87,411	22,956
Foreign Assets (net)	(3,276)	46,494	24,272	18,923	36,277	9,689
Monetary Expansion (+) /Contraction (-) (5+6)	34,680	158,997	(49,143)	39,451	123,688	32,645

Source: Monetary .Policy.Department.SBP

2.6 Liabilities and Assets of the State Bank of Pakistan Issue Department

(Million Rupees)									
Last Saturday/ Last working day		L I A B I L I T I E S			A S S E T S				
		Notes held in the Banking Department	Notes in Circulation	Total Liabilities / Assets	Gold and Foreign Assets				Rupee Coins / Notes
					(1) Gold Coins and Bullion	(2) Approved Foreign Exchange	(3) India Notes	Total	
2002	Jun.	126.6	458,247.9	458,374.5	39,378.2	245,300.3	528.6	285,207.2	1,738.0
	Dec.	168.9	511,118.2	511,287.1	39,378.2	398,620.2	528.6	438,527.1	1,950.7
2003	Jun.	214.2	522,676.9	522,891.1	41,246.5	459,116.6	535.2	500,898.3	2,351.1
	Dec.	125.8	595,159.2	595,285.0	41,257.0	514,517.5	535.2	556,309.6	2,434.6
2004	Jun.	160.8	611,742.9	611,903.7	47,532.1	514,138.8	543.8	562,214.7	2,799.2
	Dec.	126.0	690,946.2	691,072.2	47,532.1	434,236.5	543.8	482,312.4	3,067.7
2005	Jun.	145.6	705,720.1	705,865.7	53,870.0	484,308.4	593.0	538,771.4	2,961.2
	Dec.	156.6	769,617.5	769,774.1	53,870.0	426,373.5	593.0	480,836.5	2,469.6
2006	Jun.	139.3	784,235.9	784,375.2	76,317.3	567,347.6	562.6	644,227.4	2,865.5
	Dec.	140.9	917,808.9	917,949.9	76,317.3	561,728.7	562.6	638,608.5	2,640.0
2006	May	130.7	794,210.4	794,341.1	53,870.0	559,218.8	593.0	613,681.8	2,636.5
	Jun.	139.3	784,235.9	784,375.2	76,317.3	567,347.6	562.6	644,227.4	2,865.5
	Jul.	133.3	785,680.0	785,813.3	76,317.3	543,840.4	562.6	620,720.3	2,803.4
	Aug.	127.7	784,281.1	784,408.9	76,317.3	536,811.8	562.6	613,691.7	2,799.1
	Sep.	223.3	812,447.7	812,671.0	76,317.3	512,204.2	562.6	589,084.0	2,761.2
	Oct.	170.9	880,553.3	880,724.2	76,317.3	524,552.4	562.6	601,432.1	2,714.4
	Nov.	129.7	856,833.4	856,963.1	76,317.3	533,949.8	562.6	610,829.7	2,653.3
	Dec.	140.9	917,808.9	917,949.9	76,317.3	561,728.7	562.6	638,608.5	2,640.0
2007	Jan.	157.3	880,468.5	880,625.8	76,317.3	556,452.6	562.6	633,332.5	2,616.0
	Feb.	205.1	879,550.4	879,755.6	76,317.3	572,211.3	562.6	649,091.2	2,945.7
	Mar.	198.2	879,275.0	879,473.0	76,317.3	594,167.0	562.6	671,046.9	2,963.5
	Apr.	199.4	882,947.4	883,146.8	76,317.3	613,538.4	562.6	690,418.2	2,937.0
	May	168.3	903,257.3	903,425.5	76,317.3	611,527.6	562.6	688,407.4	2,915.7

2.6 Liabilities and Assets of the State Bank of Pakistan Issue Department

(Million Rupees)

(in million Rupees)

Last Saturday/ Last working day		A S S E T S								
		Domestic Assets			With Reserve Bank of India pending transfer to Pakistan					
		Internal Bills of			Gold Coins		Govt. of		Rupee Coin	Total
		Govt. of Pakistan Securities	Exchange & other Commercial Papers	Total	and Bullion	Sterling Securities	India Securities			
2002	Jun. Dec.	170,389.5 69,769.6	78.5 78.5	172,206.0 71,798.8	642.1 642.1	303.2 303.2	12.4 12.4	3.7 3.7	961.3 961.3	
2003	Jun. Dec.	18,558.7 35,457.8	78.5 78.5	20,988.3 37,970.9	671.7 671.7	316.5 316.5	12.6 12.6	3.7 3.7	1,004.5 1,004.5	
2004	Jun. Dec.	45,671.5 204,473.9	78.5 78.5	48,549.2 207,620.1	773.1 773.1	350.1 350.1	12.8 12.8	3.8 3.8	1,139.8 1,139.8	
2005	Jun. Dec.	162,802.6 285,137.5	78.5 78.5	165,842.3 287,685.7	876.2 876.2	357.8 357.8	13.9 13.9	4.1 4.1	1,252.0 1,252.0	
2006	Jun. Dec.	135,585.4 275,004.4	78.5 78.5	138,529.4 277,722.9	1,240.4 1,240.4	360.9 360.9	13.2 13.2	3.9 3.9	1,618.4 1,618.4	
2006	May	176,692.3	78.5	179,407.3	876.2	357.8	13.9	4.1	1,252.0	
	Jun.	135,585.4	78.5	138,529.4	1,240.4	360.9	13.2	3.9	1,618.4	
	Jul.	160,592.6	78.5	163,474.6	1,240.4	360.9	13.2	3.9	1,618.4	
	Aug.	166,221.2	78.5	169,098.8	1,240.4	360.9	13.2	3.9	1,618.4	
	Sep.	219,128.9	78.5	221,968.6	1,240.4	360.9	13.2	3.9	1,618.4	
	Oct.	274,880.8	78.5	277,673.6	1,240.4	360.9	13.2	3.9	1,618.4	
	Nov.	241,783.2	78.5	244,515.0	1,240.4	360.9	13.2	3.9	1,618.4	
	Dec.	275,004.4	78.5	277,722.9	1,240.4	360.9	13.2	3.9	1,618.4	
	Jan.	242,980.4	78.5	245,674.9	1,240.4	360.9	13.2	3.9	1,618.4	
	Feb.	226,021.7	78.5	229,045.9	1,240.4	360.9	13.2	3.9	1,618.4	
2007	Mar.	203,766.0	78.5	206,808.0	1,240.4	360.9	13.2	3.9	1,618.4	
	Apr.	188,094.7	78.5	191,110.1	1,240.4	360.9	13.2	3.9	1,618.4	
	May	210,405.5	78.5	213,399.7	1,240.4	360.9	13.2	3.9	1,618.4	

1 Gold is valued at end financial year (June) on the basis of closing London Market Rate.

Source: Finance Department SBP

2 Approved Foreign Exchanges includes SDR held with IMF w.e.f June 2004

3 Receivable from Reserve Bank of India.

2.7 Liabilities and Assets of the State Bank of Pakistan

Banking Department

(Million Rupees)

		L I A B I L I T I E S											
		D e p o s i t s											
Last Saturday/ Last working day		Capital Paid-up	Reserve Fund	Rural Credit Fund	Industrial Credit Fund	Export Credit Fund	Loans Guar- antee Fund	Housing Credit Fund	Federal Govt.	Provincial Govts.	Banks	Others	Total
2002	Jun.	100.0	5,400.0	2,600.0	1,600.0	1,500.0	900.0	4,700.0	16,032.7	27,073.8	110,522.1	284,048.2	437,676.9
	Dec.	100.0	5,400.0	2,600.0	1,600.0	1,500.0	900.0	4,700.0	57,236.1	24,906.5	125,151.8	272,112.1	479,406.5
2003	Jun.	100.0	5,414.5	2,600.0	1,600.0	1,500.0	900.0	4,700.0	36,841.9	32,836.0	140,989.7	285,682.1	496,349.7
	Dec.	100.0	5,414.5	2,600.0	1,600.0	1,500.0	900.0	4,700.0	23,879.4	30,664.6	145,224.3	282,551.3	482,319.6
2004	Jun.	100.0	5,414.5	2,600.0	1,600.0	1,500.0	900.0	4,700.0	2,681.5	34,207.5	156,204.2	273,562.7	466,655.8
	Dec.	100.0	5,414.5	2,600.0	1,600.0	1,500.0	900.0	4,700.0	2,272.7	44,738.5	196,347.7	290,348.5	533,707.4
2005	Jun.	100.0	5,414.5	2,600.0	1,600.0	1,500.0	900.0	4,700.0	47,286.1	45,632.0	196,302.3	273,550.2	562,770.6
	Dec.	100.0	15,414.5	2,600.0	1,600.0	1,500.0	900.0	4,700.0	86,850.0	58,127.1	207,749.7	273,412.8	626,139.6
2006	Jun.	100.0	15,414.5	2,600.0	1,600.0	1,500.0	900.0	4,700.0	69,952.5	66,644.6	207,574.3	273,897.5	618,068.8
	Dec.	100.0	34,556.5	2,600.0	1,600.0	1,500.0	900.0	4,700.0	49,197.5	50,380.5	264,356.0	272,486.9	636,420.8
2006	May	100.0	15,414.5	2,600.0	1,600.0	1,500.0	900.0	4,700.0	76,583.3	50,727.4	198,059.5	274,866.7	600,236.9
	Jun.	100.0	15,414.5	2,600.0	1,600.0	1,500.0	900.0	4,700.0	69,952.5	66,644.6	207,574.3	273,897.5	618,068.8
	Jul.	100.0	15,414.5	2,600.0	1,600.0	1,500.0	900.0	4,700.0	71,714.5	47,855.2	250,184.1	272,349.8	642,103.6
	Aug.	100.0	15,414.5	2,600.0	1,600.0	1,500.0	900.0	4,700.0	72,395.4	45,241.8	242,112.3	272,731.8	632,481.3
	Sep.	100.0	15,414.5	2,600.0	1,600.0	1,500.0	900.0	4,700.0	59,763.3	74,518.7	255,091.1	272,770.7	662,143.9
	Oct.	100.0	15,414.5	2,600.0	1,600.0	1,500.0	900.0	4,700.0	58,508.5	36,969.7	254,333.5	271,687.2	621,498.8
	Nov.	100.0	34,556.5	2,600.0	1,600.0	1,500.0	900.0	4,700.0	63,303.9	36,571.7	268,652.4	271,775.4	640,303.4
	Dec.	100.0	34,556.5	2,600.0	1,600.0	1,500.0	900.0	4,700.0	49,197.5	50,380.5	264,356.0	272,486.9	636,420.8
	Jan.	100.0	34,556.5	2,600.0	1,600.0	1,500.0	900.0	4,700.0	69,150.6	48,818.9	253,470.1	271,333.4	642,773.0
	Feb.	100.0	34,556.5	2,600.0	1,600.0	1,500.0	900.0	4,700.0	49,844.9	55,092.6	265,158.4	271,517.9	641,613.8
2007	Mar.	100.0	34,556.5	2,600.0	1,600.0	1,500.0	900.0	4,700.0	34,563.4	92,483.1	262,228.0	272,614.2	661,888.7
	Apr.	100.0	34,556.5	2,600.0	1,600.0	1,500.0	900.0	4,700.0	59,675.6	48,701.0	257,617.3	272,742.9	638,736.8
	May	100.0	34,556.5	2,600.0	1,600.0	1,500.0	900.0	4,700.0	57,631.8	46,543.9	275,034.5	270,712.6	649,922.8

2.7 Liabilities and Assets of the State Bank of Pakistan Banking Department

(Million Rupees)											
Last Saturday/ Last working day		L I A B I L I T I E S					A S S E T S				
		Allocation of Special Drawing Rights	Bills Payable	Re- valuation Accounts	Other Liabi- lities	Total Liabilities/ Assets	Notes and Coins ¹	Bills Purchased and Discounted			Govt. Treasury Bills
								Internal			
								Export Sector	Others	Total	
2002	Jun. Dec.	1,526.0 1,526.0	323.3 190.7	37,033.3 37,033.3	57,967.6 40,647.9	551,327.0 575,604.5	126.7 168.9	3.6 3.6	33.4 33.4	37.0 37.0	10,064.0 22,650.0
2003	Jun. Dec.	1,526.0 1,526.0	671.9 143.0	38,883.2 38,883.2	35,628.3 33,967.6	589,873.6 573,653.9	214.3 125.8	3.6 3.6	33.4 33.4	37.0 37.0	- -
2004	Jun. Dec.	1,526.0 1,526.0	494.4 251.0	45,205.6 45,205.6	38,946.0 57,064.6	569,642.3 654,569.0	160.8 126.0	3.6 3.6	33.4 33.4	37.0 37.0	- -
2005	Jun. Dec.	1,526.0 1,526.0	1,099.7 118.5	51,646.6 51,646.6	54,792.1 87,784.8	688,649.3 794,029.9	145.6 156.6	3.6 3.6	33.4 33.4	37.0 37.0	- -
2006	Jun. Dec.	1,526.0 1,526.0	472.7 152.8	74,406.9 74,406.9	183,199.2 112,684.2	904,488.6 871,147.1	139.3 140.9	3.6 3.6	33.4 33.4	37.0 37.0	- -
2006	May	1,526.0	137.2	51,646.6	108,342.4	788,703.6	130.7	3.6	33.4	37.0	-
	Jun.	1,526.0	472.7	74,406.9	183,199.2	904,488.6	139.3	3.6	33.4	37.0	-
	Jul.	1,526.0	221.9	74,406.9	129,996.3	875,069.2	133.3	3.6	33.4	37.0	-
	Aug.	1,526.0	245.6	74,406.9	173,120.9	908,595.1	127.7	3.6	33.4	37.0	-
	Sep.	1,526.0	151.7	74,406.9	163,713.4	928,756.3	223.3	3.6	33.4	37.0	-
	Oct.	1,526.0	149.5	74,406.9	166,445.5	890,841.1	170.9	3.6	33.4	37.0	-
	Nov.	1,526.0	161.8	74,406.9	98,450.1	860,804.6	129.7	3.6	33.4	37.0	-
	Dec.	1,526.0	152.8	74,406.9	112,684.2	871,147.1	140.9	3.6	33.4	37.0	-
	Jan.	1,526.0	180.8	74,406.9	153,571.1	918,414.2	157.3	3.6	33.4	37.0	-
	Feb.	1,526.0	574.6	74,406.9	118,738.1	882,815.7	205.1	3.6	33.4	37.0	-
2007	Mar.	1,526.0	244.2	74,406.9	151,358.5	935,380.7	198.2	3.6	33.4	37.0	-
	Apr.	1,526.0	182.4	74,406.9	135,794.9	896,603.6	199.4	3.6	33.4	37.0	-
	May	1,526.0	150.9	74,406.9	148,416.3	920,379.4	168.3	3.6	33.4	37.0	-

¹ Includes all coins of various denominations

(Contd.)

2.7 Liabilities and Assets of the State Bank of Pakistan Banking Department

(Million Rupees)

		A S S E T S								
Last Saturday/ Last working day		Balance held outside Pakistan	SDR held with IMF	Govt. Debtor Balances	Loans and Advances to Scheduled Banks					Total
					Agri- cultural Sector	Indus- trial Sector	Export Sector	Housing Sector	Others	(a)
2002	Jun.	42,454.3	509.6	953.9	55,163.8	3,415.1	59,547.8	66.9	25,408.2	143,601.8
	Dec.	71,916.8	123.9	-	54,137.6	3,021.3	45,859.8	66.9	18,074.3	121,160.0
2003	Jun.	104,384.6	14,092.1	-	55,686.8	2,800.3	56,780.4	66.9	15,214.1	130,548.5
	Dec.	104,834.5	14,136.1	319.3	55,353.1	2,563.9	77,303.2	66.9	13,992.6	149,279.7
2004	Jun.	132,021.4	-	5,533.1	58,005.3	2,328.8	88,292.3	66.9	13,194.5	161,887.8
	Dec.	147,057.8	2,284.8	7,241.5	60,737.4	1,169.4	102,522.5	-	9,179.9	173,609.2
2005	Jun.	139,513.0	1,774.6	10,814.0	59,753.3	1,498.5	109,446.9	-	11,288.6	181,987.3
	Dec.	167,964.8	1,370.3	14,503.1	63,627.6	3,066.9	106,386.3	-	13,102.5	186,183.4
2006	Jun.	121,824.0	1,088.6	16,404.3	62,194.7	7,297.3	107,982.2	-	16,104.3	193,578.5
	Dec.	128,433.7	758.6	6,560.1	63,183.5	41,382.5	131,733.6	-	14,416.2	250,715.8
2006	May	120,549.9	1,314.4	15,724.8	61,644.0	6,337.3	108,990.0	-	16,102.5	193,073.8
	Jun.	121,824.0	1,088.6	16,404.3	62,194.7	7,297.3	107,982.2	-	16,104.3	193,578.5
	Jul.	121,226.2	1,089.4	18,146.9	58,194.7	7,320.8	109,639.5	-	16,104.3	191,259.4
	Aug.	124,946.2	1,024.5	18,444.9	62,689.7	7,415.8	104,373.7	-	16,104.3	190,583.6
	Sep.	146,018.1	1,023.4	15,733.1	62,689.7	8,182.1	110,708.9	-	14,416.3	195,997.0
	Oct.	138,758.5	1,022.6	17,213.0	62,682.8	13,283.8	118,855.9	-	14,416.3	209,238.9
	Nov.	129,613.4	964.7	15,450.8	63,182.8	21,745.3	123,659.5	-	14,416.2	223,003.9
	Dec.	128,433.7	758.6	6,560.1	63,183.5	41,382.5	131,733.6	-	14,416.2	250,715.8
	Jan.	129,307.8	753.5	8,162.8	59,183.5	41,618.9	133,621.2	-	14,418.2	248,841.8
	Feb.	138,013.0	687.6	14,645.0	59,183.5	42,046.9	135,467.9	-	14,418.2	251,116.5
	Mar.	137,224.5	692.0	9,533.7	60,183.5	41,462.6	135,736.4	-	14,418.2	251,800.7
	Apr.	125,611.0	704.4	12,722.1	60,183.5	41,776.6	138,364.0	-	14,418.2	254,742.3
	May	136,311.1	631.8	10,268.3	60,183.5	42,205.8	138,394.0	-	14,418.2	255,201.5

2.7 Liabilities and Assets of the State Bank of Pakistan Banking Department

(Concl'd.)
(Million Rupees)

Last Saturday/ Last working day		A S S E T S										
		Loans and Advances to Non-Bank Financial Institutions				Other Loans And Advances (a+b)	I n v e s t m e n t s					Other Assets
		Indus- trial Sector	Housing Sector	Others	Total (b)		Sche- duled Banks	Non-Bank Financial Institutions	Govt. Securities	Others	Total	
2002	Jun.	6,268.2	15,257.3	13,455.0	34,980.5	178,582.3	52,086.6	2,739.5	148,060.8	768.5	203,655.3	114,943.9
	Dec.	6,152.3	15,257.3	8,537.5	29,947.1	151,107.1	39,326.5	2,497.1	111,276.8	926.1	154,026.5	175,574.4
2003	Jun.	5,191.0	14,157.3	8,037.5	27,385.8	157,934.3	38,954.7	2,497.1	91,753.6	907.6	134,112.9	179,098.3
	Dec.	4,440.4	13,857.3	4,786.7	23,084.4	172,364.1	38,954.7	2,497.1	36,747.5	907.6	79,106.9	202,730.2
2004	Jun.	4,418.0	12,607.3	4,219.8	21,245.1	183,132.9	34,000.8	1,747.1	87,524.9	1,291.2	124,564.0	124,193.1
	Dec.	608.1	12,607.3	3,416.7	16,632.1	190,241.3	34,000.8	1,747.1	149,989.0	1,331.2	187,068.1	120,512.6
2005	Jun.	595.0	11,242.3	3,416.7	15,254.0	197,241.4	28,273.8	1,673.4	168,392.0	933.5	199,272.6	139,850.8
	Dec.	358.3	11,242.3	2,141.7	13,742.3	199,925.7	28,273.8	1,673.4	249,452.0	890.9	280,290.1	129,782.4
2006	Jun.	831.7	11,242.3	2,141.7	14,215.7	207,794.2	24,664.3	1,673.4	380,997.3	1,043.2	408,378.1	148,823.1
	Dec.	2,832.0	11,242.3	2,071.7	16,146.0	266,861.8	25,104.3	1,673.4	292,215.7	1,029.5	320,022.9	148,332.1
2006	May	603.3	11,242.3	2,141.7	13,987.3	207,061.1	25,751.5	1,673.4	259,554.7	919.9	287,899.5	155,985.2
	Jun.	831.7	11,242.3	2,141.7	14,215.7	207,794.2	24,664.3	1,673.4	380,997.3	1,043.2	408,378.1	148,823.1
	Jul.	1,031.9	11,242.3	2,141.7	14,416.0	205,675.4	24,664.3	1,673.4	352,365.6	1,043.2	379,746.4	149,014.6
	Aug.	1,031.9	11,242.3	2,141.7	14,416.0	204,999.6	24,664.3	1,673.4	379,109.5	1,043.2	406,490.3	152,525.0
	Sep.	1,031.9	11,242.3	2,141.7	14,416.0	210,413.0	24,664.3	1,673.4	357,144.0	1,043.2	384,524.8	170,783.6
	Oct.	1,031.9	11,242.3	2,141.7	14,416.0	223,654.9	24,664.3	1,673.4	315,611.2	1,029.5	342,978.4	167,005.9
	Nov.	1,122.5	11,242.3	2,071.7	14,436.5	237,440.4	25,104.3	1,673.4	298,783.2	1,029.5	326,590.4	150,578.2
	Dec.	2,832.0	11,242.3	2,071.7	16,146.0	266,861.8	25,104.3	1,673.4	292,215.7	1,029.5	320,022.9	148,332.1
	Jan.	2,876.8	11,242.3	2,071.7	16,190.8	265,031.8	25,104.3	1,673.4	322,760.7	987.0	350,525.3	164,437.9
	Feb.	2,711.4	11,242.3	545.0	14,498.7	265,615.2	25,104.3	1,673.4	284,163.3	987.0	311,927.9	151,684.9
2007	Mar.	2,788.1	11,242.3	-	14,030.4	265,831.1	24,664.3	2,113.4	342,535.0	1,033.2	370,345.9	151,518.4
	Apr.	2,906.2	11,242.3	-	14,148.5	268,890.8	24,664.3	2,113.4	306,639.3	1,019.6	334,436.5	154,002.5
	May	2,900.6	11,242.3	-	14,142.9	269,344.4	24,664.3	2,113.4	301,036.0	1,017.4	328,831.0	174,787.5

Source: Finance Department SBP

2.8 Scheduled Bank's Consolidated Position

Based on weekly position Liabilities & Assets (All Banks)

(Million Rupees)

(in million Rupees)

Last Saturday/ Last working day		Capital (Paid-up) and Reserves	DEMAND LIABILITIES IN PAKISTAN					TIME LIABILITIES IN PAKISTAN					Total
			Inter-Bank		Others			Inter-Bank		Others			
			Borrow- ings	Deposits	Deposits (General)	Others	Total	Borrow- ings	Deposits	Deposits (General)	Others	Total	
2000	Jun.	79,648	43	8,537	475,281	47,420	531,281	5,674	626	652,279	10,759	669,338	
	Dec.	78,399	40	10,019	482,128	45,485	537,672	4,942	1,434	674,187	8,741	689,304	
2001	Jun.	88,581	34	12,248	527,672	42,870	582,824	3,668	1,037	712,978	9,494	727,177	
	Dec.	93,969	21	9,781	549,393	44,731	603,926	2,979	1,591	748,101	9,740	762,411	
2002	Jun.	85,886	10	13,251	609,657	47,333	670,251	659	1,445	803,749	12,808	818,661	
	Dec.	91,210	2	10,293	662,263	68,095	740,653	915	4,713	853,250	16,830	875,708	
2003	Jun.	112,230	1	9,936	785,333	53,352	848,622	621	3,370	903,153	16,020	923,164	
	Dec.	108,962	1	11,771	886,895	62,776	961,443	2,573	2,051	918,141	16,872	939,637	
2004	Jun.	131,225	15	20,740	1,014,947	56,532	1,092,234	1,878	2,928	1,026,919	20,703	1,052,428	
	Dec.	160,644	27	18,680	1,124,763	61,914	1,205,384	1,082	3,655	1,079,464	24,853	1,109,054	
2005	Jun.	190,652	99	22,894	1,211,674	70,107	1,304,774	1,024	9,732	1,231,745	27,288	1,269,789	
2004	Jun.	131,225	15	20,740	1,014,947	56,532	1,092,234	1,878	2,928	1,026,919	20,703	1,052,428	
	Jul.	125,988	15	10,333	1,033,788	55,215	1,099,351	1,784	4,689	1,017,808	20,924	1,045,205	
	Aug.	143,152	21	9,009	1,029,154	55,351	1,093,535	1,761	5,494	1,030,830	22,814	1,060,899	
	Sep.	146,756	21	9,200	1,034,796	55,984	1,100,001	2,008	2,930	1,038,510	23,960	1,067,408	
	Oct.	151,749	634	11,544	1,046,072	58,400	1,116,650	1,252	2,651	1,018,650	26,362	1,048,915	
	Nov.	152,250	27	10,565	1,047,137	56,665	1,114,394	1,780	2,349	1,045,379	24,509	1,074,017	
	Dec.	160,644	27	18,680	1,124,763	61,914	1,205,384	1,082	3,655	1,079,464	24,853	1,109,054	
	Jan.	162,814	42	13,010	1,091,933	59,720	1,164,705	1,057	5,755	1,063,362	24,109	1,094,283	
	Feb.	175,045	192	11,565	1,129,538	60,393	1,201,688	1,057	6,948	1,079,012	24,100	1,111,117	
	Mar.	177,015	42	11,535	1,169,700	65,469	1,246,746	1,338	8,747	1,103,382	19,310	1,132,777	
2005	Apr.	184,926	87	11,201	1,147,864	61,630	1,220,782	3,212	8,327	1,142,154	25,820	1,179,513	
	May	174,433	87	11,807	1,158,310	64,863	1,235,067	3,107	6,729	1,161,737	26,210	1,197,783	
	Jun.	190,652	99	22,894	1,211,674	70,107	1,304,774	1,024	9,732	1,231,745	27,288	1,269,789	
	Jun.	190,652	99	22,894	1,211,674	70,107	1,304,774	1,024	9,732	1,231,745	27,288	1,269,789	

2.8 Scheduled Bank's Consolidated Position

Based on weekly position Liabilities & Assets (All Banks)

(Million Rupees)

</

¹ The Statutory Reserves requirements stood at 5% of Demand and Time Liabilities up to 6th Oct. 2000, thereafter at 7% up to 14th Dec. 2000 and again at 5% w.e.f. 15-12-2000.

(Contd.)

2.8 Scheduled Bank's Consolidated Position

Based on weekly position Liabilities & Assets (All Banks)

(Million Rupees)

Last Saturday/ Last working day		BALANCES			Money at Call & Short Notice in		FOREIGN CURRENCY			ADVANCES			Bills Purchased & Discounted
		Cash in	With	Others	Pakistan	as % of (a)	Held in Pakistan	with Banks Abroad	Total	To Banks	To Others	Total (i)	
		(c)	(d)	(e)	(f)								(ii)
2000	Jun.	19,468	153,371	18,250	43,509	19.5	2,222	46,619	48,841	5,788	801,154	806,942	69,554
	Dec.	20,196	68,418	19,351	32,222	11.4	3,594	54,901	58,495	4,841	869,336	874,177	71,089
2001	Jun.	19,178	147,962	18,033	31,179	16.5	4,788	70,856	75,644	3,657	866,490	870,147	75,504
	Dec.	21,225	157,132	19,301	42,659	17.6	4,200	76,184	80,384	3,490	894,602	898,092	73,776
2002	Jun.	26,414	124,883	27,268	32,831	14.2	5,003	89,416	94,419	1,626	894,524	896,150	75,588
	Dec.	25,510	125,351	27,390	27,291	12.7	5,435	56,272	61,707	715	942,238	942,953	73,463
2003	Jun.	30,415	140,077	31,306	28,686	13.0	5,435	68,578	74,013	253	988,572	988,825	80,687
	Dec.	30,273	145,475	29,129	22,729	12.1	8,214	51,097	59,311	197	1,110,553	1,110,750	86,364
2004	Jun.	36,432	151,406	36,762	30,444	11.9	4,806	60,976	65,782	63	1,258,022	1,258,085	99,924
	Dec.	38,836	194,949	39,987	29,636	13.1	6,341	146,708	153,049	130	1,525,213	1,525,343	104,002
2005	Jun.	43,462	188,092	49,021	22,166	11.8	6,777	116,627	123,404	190	1,680,491	1,680,681	120,480
2004	Jun.	36,432	151,406	36,762	30,444	11.9	4,806	60,976	65,782	63	1,258,022	1,258,085	99,924
	Jul.	32,929	166,428	26,850	33,379	12.1	5,136	77,176	82,312	65	1,250,323	1,250,388	96,767
	Aug.	32,349	170,936	26,995	39,888	12.5	4,998	93,424	98,422	66	1,268,288	1,268,354	96,567
	Sep.	35,005	187,963	26,904	34,041	13.1	5,007	99,127	104,134	69	1,314,261	1,314,330	101,746
	Oct.	37,040	159,031	27,626	35,846	12.0	5,195	124,045	129,240	68	1,371,404	1,371,472	102,013
	Nov.	36,744	166,054	26,176	33,220	12.0	6,710	132,171	138,881	223	1,414,350	1,414,573	101,159
	Dec.	38,836	194,949	39,987	29,636	13.1	6,341	146,708	153,049	130	1,525,213	1,525,343	104,002
	Jan.	38,802	173,345	29,226	30,581	12.0	7,764	131,762	139,526	77	1,534,011	1,534,088	103,491
	Feb.	35,678	173,434	30,953	32,794	11.8	7,659	132,037	139,696	164	1,548,889	1,549,053	108,004
	Mar.	43,914	171,635	32,544	31,471	11.7	6,384	127,079	133,463	135	1,594,874	1,595,009	116,036
2005	Apr.	38,291	171,913	32,378	24,836	11.1	5,487	133,269	138,756	161	1,604,839	1,605,000	115,973
	May	37,254	179,456	34,826	23,791	11.3	6,342	125,906	132,248	175	1,636,208	1,636,383	115,866
	Jun.	43,462	188,092	49,021	22,166	11.8	6,777	116,627	123,404	190	1,680,491	1,680,681	120,480

2.8 Scheduled Bank's Consolidated Position ¹

Based on weekly position Liabilities & Assets (All Banks)

(Concl'd.)

(Million Rupees)

		BANK CREDIT		INVESTMENT IN SECURITIES & SHARES												
Last Saturday/ Last working day		Total (i) + (ii) (g)	(g) as % of (a)	Federal Govt. Securities	Provincial Govts. Securities	Treasury Bills	Others	Total (h)	(h) as % of (a)	Others Assets	Advance Tax Paid	Fixed Assets	Total Assets	Excess Reserves (d) - (b)		
2000	Jun.	876,496	73.0	115,536	1,730	103,790	65,993	287,049	23.9	257,054	72,941	29,594	1,806,573	91,216		
	Dec.	945,266	77.0	117,127	1,836	135,711	65,377	320,051	26.1	331,575	75,239	30,300	1,901,113	5,525		
2001	Jun.	945,651	72.2	101,161	1,836	123,889	70,048	296,934	22.7	340,220	78,205	30,922	1,983,928	80,947		
	Dec.	971,868	71.1	118,446	1,728	118,446	74,811	313,431	22.9	418,091	81,070	31,019	2,136,180	86,805		
2002	Jun.	971,738	65.3	154,292	1,728	231,507	83,493	471,020	31.6	456,377	64,270	31,812	2,301,032	48,844		
	Dec.	1,016,416	62.9	172,034	1,515	345,856	91,679	611,084	37.8	545,617	60,082	35,047	2,535,495	43,220		
2003	Jun.	1,069,512	60.4	191,709	1,234	412,449	118,234	723,626	40.8	353,842	49,789	38,738	2,540,004	50,060		
	Dec.	1,197,114	63.0	216,142	182	416,932	125,817	759,073	39.9	382,802	53,388	41,670	2,720,964	49,438		
2004	Jun.	1,358,009	63.3	240,842	77	408,438	132,026	781,383	36.4	442,162	53,879	46,766	3,003,025	42,799		
	Dec.	1,629,345	70.4	209,174	87	265,068	141,065	615,394	26.6	478,192	45,516	49,788	3,274,692	77,781		
2005	Jun.	1,801,161	70.0	173,788	77	415,016	140,453	729,334	28.3	563,552	42,386	61,809	3,624,387	58,252		
2004	Jun.	1,358,009	63.3	240,842	77	408,438	132,026	781,383	36.4	442,162	53,879	46,766	3,003,025	42,799		
	Jul.	1,347,155	62.8	231,724	77	416,569	132,451	780,821	36.4	435,584	55,117	46,872	3,007,447	57,681		
	Aug.	1,364,921	63.4	229,397	77	416,204	130,831	776,509	36.0	448,439	55,053	47,483	3,060,995	61,340		
	Sep.	1,416,076	65.3	220,651	77	360,186	129,667	710,581	32.8	464,341	54,481	48,889	3,082,415	78,000		
	Oct.	1,473,485	68.0	219,794	77	326,265	129,481	675,617	31.2	468,851	52,556	48,844	3,108,136	48,998		
	Nov.	1,515,732	69.3	216,858	77	298,324	129,109	644,368	29.4	462,511	50,258	49,486	3,123,430	55,005		
	Dec.	1,629,345	70.4	209,174	87	265,068	141,065	615,394	26.6	478,192	45,516	49,788	3,274,692	77,781		
2005	Jan.	1,637,579	72.5	200,657	89	265,726	136,047	602,519	26.7	465,549	46,062	48,085	3,211,274	58,879		
	Feb.	1,657,057	71.6	195,327	77	303,359	148,233	646,996	28.0	483,836	46,094	54,032	3,300,570	56,168		
	Mar.	1,711,045	71.9	187,977	77	328,800	141,375	658,229	27.7	499,086	43,987	58,909	3,384,283	51,059		
	Apr.	1,720,973	71.7	186,139	77	352,206	132,568	670,990	28.0	526,240	38,300	59,904	3,422,581	50,632		
	May	1,752,249	72.0	182,111	77	346,973	129,041	658,202	27.1	536,372	39,805	60,403	3,454,606	56,632		
	Jun.	1,801,161	70.0	173,788	77	415,016	140,453	729,334	28.3	563,552	42,386	61,809	3,624,387	58,252		

¹ Formate revised from July, 2005

Source: Finance Department SBP

2.8 Scheduled Bank's Consolidated Position

Based on weekly position Liabilities & Assets (All Banks)

(Million Rupees)

Financial Position	2006						
	May	Jun.	Jul.	Aug.	Sep.	Oct.	Nov.
ASSETS							
Cash & Balances With Treasury Banks	249,157	273,896	301,398	293,350	319,300	327,245	325,032
Balances With Other Banks	110,300	120,345	108,572	105,201	105,505	120,810	107,717
Lending To Financial Institutions	175,661	226,451	184,544	226,567	206,513	171,627	187,034
Investments - Net	821,399	794,584	830,799	799,285	790,057	790,558	824,966
Advances – Net of Provision	1,993,920	2,005,658	2,055,633	2,064,312	2,104,943	2,125,282	2,168,507
Gross Advances	2,115,049	2,127,388	2,177,898	2,189,368	2,231,665	2,252,749	2,297,416
Less: Provision for Non- Performing Advances	121,129	121,730	122,265	125,057	126,723	127,467	128,909
Operating Fixed Assets	71,577	72,659	74,790	76,995	79,358	80,796	83,268
Deferred Tax Assets	6,943	6,760	7,104	7,175	7,003	6,998	7,234
Other Assets	171,251	172,644	162,982	161,763	186,123	170,138	185,865
TOTAL ASSETS	3,600,208	3,672,997	3,725,821	3,734,647	3,798,801	3,793,455	3,889,624
LIABILITIES							
Bills Payable	47,636	47,282	48,688	47,676	60,122	60,559	56,524
Borrowings	346,751	361,080	359,426	369,875	385,035	363,350	395,124
Deposits and Other Accounts	2,733,969	2,786,731	2,813,325	2,806,645	2,816,450	2,823,123	2,891,250
Sub-ordinated Loans	21,721	21,721	21,720	23,374	23,612	23,911	24,411
Liabilities Against Assets Subject to Finance Lease	591	740	734	720	675	672	645
Other Liabilities	129,047	133,514	131,994	134,948	150,167	146,623	148,631
Deferred Tax Liabilities	8,996	8,554	11,357	11,316	10,947	10,386	7,844
TOTAL LIABILITIES	3,288,712	3,359,621	3,387,244	3,394,554	3,447,007	3,428,624	3,524,428
NET ASSETS	311,496	313,376	338,577	340,092	351,794	364,831	365,196
REPRESENTED BY:							
Paid up Capital / Head Office Capital Account	119,500	119,860	122,786	125,837	127,076	126,704	128,019
Reserves	90,580	89,780	90,740	91,569	93,324	105,351	104,812
Unappropriated / Unremitted Profit	27,547	33,428	48,719	48,007	54,546	54,284	63,296
Surplus/ (Deficit) On Revaluation Of Assets	73,869	70,308	76,332	74,680	76,849	78,491	69,068
TOTAL	311,496	313,376	338,577	340,092	351,794	364,831	365,196

Format of weekly statement of position has been redesigned from the month of July 05.

2.8 Scheduled Bank's Consolidated Position

Based on weekly position Liabilities & Assets (All Banks)

(Million Rupees)

Financial Position	2006	2007				
	Dec.	Jan.	Feb.	Mar.	Apr.	May
ASSETS						
Cash & Balances With Treasury Banks	332,452	319,628	321,821	322,678	320,915	337,580
Balances With Other Banks	140,575	142,802	156,924	175,772	167,425	148,960
Lending To Financial Institutions	192,343	182,186	205,285	192,127	199,604	171,253
Investments - Net	775,546	794,483	872,426	929,454	1,022,787	1,048,978
Advances – Net of Provision	2,281,866	2,243,207	2,228,153	2,251,930	2,253,633	2,296,813
Gross Advances	2,409,478	2,371,734	2,358,720	2,385,242	2,387,597	2,430,090
Less: Provision for Non-Performing Advances	127,611	128,527	130,567	133,313	133,964	133,277
Operating Fixed Assets	107,745	109,639	112,704	120,447	122,336	124,047
Deferred Tax Assets	7,988	8,002	7,633	7,866	7,984	8,047
Other Assets	217,731	202,912	202,424	220,770	202,416	193,673
TOTAL ASSETS	4,056,246	4,002,859	4,107,369	4,221,045	4,297,101	4,329,351
LIABILITIES						
Bills Payable	55,177	58,521	50,364	52,516	53,570	50,674
Borrowings	420,080	382,635	425,687	393,968	426,994	403,459
Deposits and Other Accounts	2,999,895	2,975,457	3,034,321	3,151,944	3,177,075	3,226,117
Sub-ordinated Loans	26,967	26,967	26,264	27,764	27,744	27,743
Liabilities Against Assets Subject to Finance Lease	898	929	944	901	893	1,022
Other Liabilities	150,308	147,312	146,880	154,554	154,097	155,726
Deferred Tax Liabilities	7,357	6,422	6,585	8,860	8,766	8,830
TOTAL LIABILITIES	3,660,683	3,598,242	3,691,046	3,790,508	3,849,139	3,873,572
NET ASSETS	395,563	404,617	416,323	430,537	447,963	455,780
REPRESENTED BY:						
Paid up Capital / Head Office Capital Account	165,477	165,894	168,895	180,299	186,320	190,642
Reserves	102,928	116,388	117,200	125,493	124,501	129,967
Unappropriated / Unremitted Profit	63,520	56,383	62,676	57,160	63,858	57,656
Surplus/ (Deficit) On Revaluation Of Assets	63,638	65,952	67,553	67,585	73,283	77,514
TOTAL	395,563	404,617	416,323	430,537	447,963	455,780

Source: Finance Department SBP

2.9 Scheduled Banks' Liquidity Position

All Banks¹

(Million Rupees)

		LIQUID LIABILITIES IN PAKISTAN			LIQUID ASSETS MAINTAINED IN PAKISTAN				
Last Saturday		Demand Liabilities	Time Liabilities	Total	Cash in Pakistan	Balance With SBP	Balance With Agents of SBP	Gold	Unencumbered Approved Securities ²
2002	Jun.	649,931	793,887	1,443,818	29,329	76,799	10,314	0	394,457
	Dec.	713,429	839,446	1,552,875	28,433	91,914	4,257	0	539,459
2003	Jun.	810,812	889,173	1,699,985	30,926	155,472	5,987	0	574,986
	Dec.	917,242	906,630	1,823,872	33,682	122,610	3,661	0	532,752
2004	Jun.	958,869	965,782	1,924,652	33,908	162,595	4,689	0	484,641
	Dec.	1,062,884	995,135	2,058,019	39,440	126,506	4,186	0	408,263
2005	Jun.	1,131,465	1,138,439	2,269,904	42,461	120,668	5,621	0	529,035
	Dec.	1,289,884	1,244,768	2,534,652	50,145	146,530	15,173	0	515,681
2006	Jun.	1,281,332	1,421,594	2,702,926	55,454	159,210	7,529	0	567,416
	Dec.	2,314,909	693,303	3,008,212	61,755	215,476	16,473	0	567,984
2006	Apr.	1,246,268	1,371,950	2,618,218	52,766	137,954	7,202	0	564,293
	May	1,265,987	1,384,203	2,650,190	53,751	137,757	7,018	0	570,108
	Jun.	1,281,332	1,421,594	2,702,926	55,454	159,210	7,529	0	567,416
	Jul.	2,223,752	553,825	2,777,577	53,849	185,737	6,623	0	567,119
	Aug.	2,178,939	589,245	2,768,184	55,618	176,140	6,594	0	577,403
	Sep.	2,169,117	600,658	2,769,775	58,745	194,781	9,954	0	543,919
	Oct.	2,174,693	632,476	2,807,169	65,615	198,410	8,313	0	547,101
	Nov.	2,211,847	653,169	2,865,016	57,561	208,877	6,890	0	584,116
	Dec.	2,314,909	693,303	3,008,212	61,755	215,476	16,473	0	567,984
2007	Jan.	2,251,623	673,981	2,925,604	63,382	213,976	7,185	0	592,314
	Feb.	2,298,127	681,241	2,979,368	63,823	216,592	6,753	0	646,757
	Mar.	2,601,704	528,142	3,129,846	63,405	213,311	9,183	0	716,324
	Apr.	2,613,725	542,664	3,156,389	63,644	210,343	7,574	0	769,524

2.9 Scheduled Banks' Liquidity Position

All Banks¹

(Million Rupees)

		LIQUID ASSETS MAINTAINED IN PAKISTAN					(in million Rupees)	
		Foreign Banks Deposits with SBP under section 13(3) of the Banking Companies Ordinance				Minimum of Assets required to be held under Section 29 of the Banking Companies Ordinance	Excess of Assets being held over the minimum required under Section 29 of the Banking Companies Ordinance	
Last Saturday		Cash	Unencumbered Approved Securities ²	Foreign Currency	Share Capital M F B			Total
2002	Jun.	60	827	21,046	1,705	534,537	288,764	245,773
	Dec.	60	828	19,976	1,705	686,632	310,575	376,057
2003	Jun.	60	936	19,828	1,705	789,900	339,997	449,903
	Dec.	560	327	18,799	1,705	714,096	364,774	349,322
2004	Jun.	190	3,601	10,341	1,705	701,670	382,784	318,886
	Dec.	60	129	14,280	1,705	594,569	408,376	186,193
2005	Jun.	60	4,239	15,919	1,675	719,678	450,694	268,984
	Dec.	156	4,020	17,660	1,705	751,070	503,471	247,599
2006	Jun.	156	4,014	19,172	1,705	814,656	537,716	276,940
	Dec.	156	3,981	13,524	1,685	881,034	719,116	161,918
2006	Apr.	156	4,025	18,624	1,705	786,725	520,874	265,851
	May	156	4,012	19,172	1,705	793,679	527,180	266,499
	Jun.	156	4,014	19,172	1,705	814,656	537,716	276,940
	Jul.	156	4,022	19,327	1,705	838,538	668,025	170,513
	Aug.	156	3,985	19,327	1,705	840,928	664,207	176,721
	Sep.	156	4,003	19,327	1,705	832,590	663,920	168,670
	Oct.	156	4,004	19,327	1,705	844,631	671,851	172,780
	Nov.	156	3,984	14,050	1,705	877,339	685,097	192,242
	Dec.	156	3,981	13,524	1,685	881,034	719,116	161,918
2007	Jan.	156	0	13,941	1,655	892,609	699,192	193,417
	Feb.	156	0	13,941	1,655	949,677	712,094	237,583
	Mar	156	0	13,941	1,655	1,017,975	755,439	262,536
	Apr.	0	654	13,442	1,655	1,066,836	761,307	305,529

1 Excluding Indian Banks

Source: Finance Department SBP

2 Valued at a price not exceeding current market price

Note : Figures of Demand and Time Liabilities of Scheduled Banks shown in this table may not tally with the corresponding provisional figures appearing in the table 2.7 on page 26 & 27.

MFB : Macro Finance Bank (Khushali Bank)

2.10 NBFCs Consolidated Financial Position

(Million Rupees)

Assets/ Liabilities	Jun 06			Sep 06 ^P		
	DFIs	NBFCs	Total	DFIs	NBFCs	Total
1. Currency and Deposits	10,558	28,312	38,870	10,042	27,759	37,801
a. Currency	39	944	983	51	372	423
b. Transferable Deposits	-	18,646	18,646	-	17,932	17,932
c. Restricted Deposits	-	476	476	-	573	573
d. Other Deposits	10,519	8,246	18,765	9,991	8,882	18,873
2. Investment in securities other than shares	17,527	17,485	35,012	18,395	16,874	35,269
a. Short-term	4,403	4,611	9,014	4,843	4,521	9,364
b. Long-term	13,124	12,874	25,998	13,552	12,353	25,905
3. Loans extended (Advances)	46,462	125,647	172,109	46,478	120,294	166,772
a. Short-term	50	26,607	26,657	-	24,165	24,165
b. Long-term	46,412	99,040	145,452	46,478	96,129	142,607
4. Investment in shares	24,492	152,031	176,523	23,581	153,100	176,681
a. Quoted	24,492	150,320	174,812	23,581	151,345	174,926
b. Non quoted	-	1,711	1,711	-	1,755	1,755
5. Insurance Technical Reserve	-	-	-	-	-	-
a. Life	-	-	-	-	-	-
b. Non-life	-	-	-	-	-	-
6. Financial Derivatives	-	809	809	-	916	916
7. Other accounts receivable	8,845	18,528	27,373	9,373	20,508	29,881
8. Non-financial assets	-	8,685	8,685	-	8,837	8,837
a. Produced assets	-	5,720	5,720	-	5,125	5,125
i. Fixed assets	-	5,251	5,251	-	4,151	4,151
ii. Inventories	-	222	222	-	130	130
iii. Valuables	-	-	-	-	0	0
iv. Other produced assets	-	247	247	-	844	844
b. Non-produced assets	-	2,965	2,965	-	3,712	3,712
i. Land	-	2,123	2,123	-	2,606	2,606
ii. Other non-produced assets	-	842	842	-	1,106	1,106
Total Assets/ Liabilities	107,884	351,497	459,381	107,868	348,286	456,154
1. Deposits	28,985	37,258	66,243	24,998	36,102	61,100
a. Restricted deposits	-	10,219	10,219	-	9,707	9,707
b. Other deposits	28,985	27,039	56,024	24,998	26,395	51,393
2. Securities other than shares (bonds/debentures etc)	-	7,456	7,456	-	8,781	8,781
a. Short-term	-	2,659	2,659	-	1,913	1,913
b. long-term	-	4,797	4,797	-	6,868	6,868
3. Loans (Borrowings)	37,079	72,435	109,514	39,210	67,059	106,269
a. Short-term	2,600	25,871	28,471	3,965	25,546	29,511
b. Long-term	34,479	46,564	81,043	35,245	41,513	76,758
4. Financial Derivatives	-	805	805	-	493	493
5. Other accounts payable	6,488	33,389	39,877	3,608	35,749	39,357
6. Shares and other equity	35,332	200,153	235,485	40,053	200,102	240,155
a. Quoted	16,387	84,704	101,091	17,137	100,324	117,461
b. Non quoted	-	21,137	21,137	-	20,630	20,630
c. Retained earnings	-	53,033	53,033	-	55,489	55,489
d. Current year result	1,937	19,137	21,074	3,500	2,776	6,276
e. General and special reserves	17,008	20,096	37,104	19,417	18,704	38,121
f. Valuation adjustments	-	2,046	2,046	-	2,179	2,179

2.10 NBFCs Consolidated Financial Position

Assets/ Liabilities	(Million Rupees)					
	Dec 06 ^P			Mar.07 ^P		
	DFIs	NBFCs	Total	DFIs	NBFCs	Total
1. Currency and Deposits	17,342	31,730	49,072	17,299	47,972	65,271
a. Currency	122	521	643	51	260	311
b. Transferable Deposits	0	20,671	20,671	0	35,775	35,775
c. Restricted Deposits	0	1,334	1,334	0	2,074	2,074
d. Other Deposits	17,220	9,204	26,424	17,248	9,863	27,111
2. Investment in securities other than shares	16,302	15,504	31,806	18,656	18,775	37,431
a. Short-term	3,319	3,669	6,988	5,272	3,272	8,544
b. Long-term	12,983	11,835	24,818	13,384	15,503	28,887
3. Loans extended (Advances)	55,550	108,677	164,227	49,950	118,010	167,960
a. Short-term	0	26,335	26,335	0	31,805	31,805
b. Long-term	55,550	82,342	137,892	49,950	86,205	136,155
4. Investment in shares	23,511	133,461	156,972	24,218	142,907	167,125
a. Quoted	23,511	131,631	155,142	24,218	140,557	164,775
b. Non quoted	0	1,830	1,830	0	2,350	2,350
5. Insurance Technical Reserve	0	2	2	0	0	0
a. Life	0	1	1	0	0	0
b. Non-life	0	1	1	0	0	0
6. Financial Derivatives	0	1,215	1,215	0	1,919	1,919
7. Other accounts receivable	8,444	18,269	26,713	7,931	21,999	29,930
8. Non-financial assets	0	7,719	7,719	0	8,606	8,606
a. Produced assets	0	5,488	5,488	0	5,502	5,502
i. Fixed assets	0	5,116	5,116	0	4,823	4,823
ii. Inventories	0	148	148	0	294	294
iii. Valuables	0	0	0	0	0	0
iv. Other produced assets	0	224	224	0	385	385
b. Non-produced assets	0	2,230	2,230	0	3,104	3,104
i. Land	0	1,471	1,471	0	1,478	1,478
ii. Other-non-produced assets	0	759	759	0	1,626	1,626
Total Assets/ Liabilities	121,148	316,578	437,726	118,054	360,188	478,242
1. Deposits	25,830	25,744	51,574	26,134	25,822	51,956
a. Restricted deposits	0	8,149	8,149	0	10,150	10,150
b. Other deposits	25,830	17,595	43,425	26,134	15,672	41,806
2. Securities other than shares (bonds/debentures etc)	0	9,563	9,563	0	7,430	7,430
b. long-term	0	2,194	2,194	0	1,947	1,947
b. long-term	0	7,369	7,369	0	5,483	5,483
3. Loans (Borrowings)	49,911	60,633	110,544	49,778	63,134	112,912
a. Short-term	5,050	21,156	26,206	225	22,998	23,223
b. Long-term	44,861	39,477	84,338	49,553	40,136	89,689
4. Financial Derivatives	0	148	148	0	1,338	1,338
5. Other accounts payable	4,826	29,748	34,574	3,362	36,294	39,656
6. Shares and other equity	40,582	190,742	231,324	38,781	226,170	264,951
a. Quoted	19,395	98,188	117,583	19,395	112,455	131,850
b. Non quoted	0	23,579	23,579	0	34,256	34,256
c. Retained earnings	0	50,807	50,807	0	54,059	54,059
d. Current year result	3,713	1,960	5,673	658	7,177	7,835
e. General and special reserves	17,474	16,940	34,414	18,728	20,525	39,253
f. Valuation adjustments	0	-732	-732	0	-2,302	-2,302

NBFCs Non Bank Financial Companies

DFIs Development Finance Institutions

2.11 Classification of Deposits with NBFCs

(Million Rupees)

Sector	December 06 ^P			March 07 ^P		
	Depository	Non-Depository	Total	Depository	Non-Depository	Total
1 Non-financial Corporations	15,937	311	16,248	17,852	181	18,033
i Public	1,488	61	1,549	1,505	0	1,505
ii Private	14,449	250	14,699	16,347	181	16,528
2 Financial Corporations	22,860	15	22,875	21,657	10	21,667
i Central Bank	0	0	0	0	0	0
ii Deposit money institutions	18,271	8	18,279	14,815	10	14,825
ii Other deposit accepting institutions	1,382	7	1,389	3,746	0	3,746
iv Financial intermediaries	1,549	0	1,549	1,906	0	1,906
v Financial auxiliaries	521	0	521	240	0	240
vi Insurance and pension funds	1,137	0	1,137	950	0	950
3 Central Government	923	0	923	225	0	225
4 Provincial Governments	18	0	18	107	0	107
5 Local Governments	0	0	0	0	0	0
6 Household	11,203	7	11,210	8,385	4	8,389
7 Non-profit Institutions (NPIs) Serving Households	296	0	296	294	0	294
8 Non-residents	5	0	5	5	0	5
9 Foreign Currency	0	0	0	72	0	72
Total	51,242	333	51,575	51,761	195	51,956

2.12 Classification of NBFC's Loans Extended(Advances)

(Million Rupees)

Sector	December 06 ^P			March 07 ^P		
	Depository	Non-Depository	Total	Depository	Non-Depository	Total
1 Non-financial corporations	96,259	5,992	102,251	98,529	7,258	105,787
i Public	1,748	275	2,023	1,614	0	1,614
ii Private	94,511	5,717	100,228	96,915	7,258	104,173
2 Financial Corporations	16,489	11,887	28,376	10,504	18,260	28,764
i Central Bank	0	0	0	0	0	0
ii Deposit money institutions	9,560	882	10,442	4,303	802	5,105
ii Other deposit accepting institutions	1,544	2,430	3,974	2,582	2,288	4,870
iv Financial intermediaries	1,156	3,147	4,303	1,119	3,288	4,407
v Financial auxiliaries	4,160	5,426	9,586	2,434	11,879	14,313
vi Insurance and pension funds	69	2	71	66	3	69
3 Central Government	140	0	140	122	0	122
4 Provincial Governments	0	0	0	0	0	0
5 Local Governments	0	0	0	0	0	0
6 Household	13,158	12,079	25,237	13,364	12,040	25,404
7 Non-profit Institutions (NPIs) Serving Households	20	0	20	20	0	20
8 Non-Residents	0	0	0	0	0	0
9 Bills purchased and discounted (inland bills)	0	217	217	0	208	208
10 Other Advances and Financial Leases	2,507	5,479	7,986	2,541	5,114	7,655
Total	128,573	35,654	164,227	125,080	42,880	167,960

2.13 Classification of NBFC's Investments in Securities and Shares

(Million Rupees)

Securities/Shares	December 06 ^P			March 07 ^P		
	Depository	Non-Depository	Total	Depository	Non-Depository	Total
A. Securities	22,383	9,423	31,806	24,564	12,867	37,431
1 Non-financial Corporations	7,489	4,106	11,595	7,772	4,989	12,761
i Public	698	1,104	1,802	649	1,056	1,705
ii Private	6,791	3,002	9,793	7,123	3,933	11,056
2 Financial Corporations	4,327	2,792	7,119	4,347	5,253	9,600
i Central Bank	0	0	0	0	0	0
ii Deposit money institutions	3,806	1,886	5,692	3,702	3,347	7,049
ii Other deposit accepting institutions	295	656	951	314	887	1,201
iv Financial intermediaries	216	250	466	201	1,019	1,220
v Financial auxiliaries	0	0	0	0	0	0
vi Insurance and pension funds	10	0	10	130	0	130
3 Central Government	10,517	2,525	13,042	12,394	2,625	15,019
4 Provincial Governments	0	0	0	0	0	0
5 Local Governments	0	0	0	0	0	0
6 Household	0	0	0	0	0	0
7 Non-profit institutions (NPIs) Serving Households	0	0	0	0	0	0
8 Non-Residents	0	0	0	0	0	0
9 Foreign Currency	50	0	50	51	0	51
B. Shares	30,670	126,302	156,972	33,845	133,280	167,125
1 Non-financial Corporations	26,700	113,741	140,441	29,733	122,788	152,521
i Public	2,968	102,255	105,223	4,110	108,532	112,642
ii Private	23,732	11,486	35,218	25,623	14,256	39,879
2 Financial Corporations	3,018	12,472	15,490	3,125	10,292	13,417
i Central Bank	0	0	0	0	0	0
ii Deposit money institutions	1,119	4,925	6,044	1,533	5,137	6,670
ii Other deposit accepting institutions	440	2,321	2,761	254	1,108	1,362
iv Financial intermediaries	1,197	3,396	4,593	1,186	2,903	4,089
v Financial auxiliaries	118	30	148	18	28	46
vi Insurance and pension funds	144	1,800	1,944	134	1,116	1,250
3 Central Government	0	0	0	0	0	0
4 Provincial Governments	0	0	0	0	0	0
5 Local Governments	0	0	0	0	0	0
6 Household	0	0	0	0	0	0
7 Non-profit institutions (NPIs) Serving Households	0	0	0	0	0	0
8 Non-residents	952	89	1,041	987	200	1,187
Total (A+B)	53,053	135,725	188,778	58,409	146,147	204,556

2.14 Currency in Circulation

(Million Rupees)

END OF PERIOD		One Rupee			Total (1+2+3)	Held by	Held by	Currency	Currency
		Subsidiary	Coins	Five Rupee		Banking	Issue	In tills of	In
		Coins	and above	Bills & above		Department of SBP	Department of SBP	Scheduled Banks	Circulation (4-5-6-7)
		1	2	3	4	5	6	7	8
2002	Jun.	665	3,055	458,375	462,095	127	1,738	26,414	433,816
	Dec.	665	3,423	511,287	515,375	169	1,951	25,510	487,746
2003	Jun.	662	4,004	522,891	527,558	214	2,351	30,415	494,577
	Dec.	662	4,405	595,285	600,352	126	2,435	30,273	567,517
2004	Jun.	664	4,941	611,904	617,508	161	2,799	36,432	578,116
	Dec.	667	5,574	691,072	697,313	126	3,068	38,836	655,283
2005	Jun	667	6,093	705,720	712,480	146	2,961	43,472	665,901
	Dec.	667	6,618	769,617	776,902	157	2,470	42,527	731,749
2006	Jun.	667	6,931	784,236	791,834	139	2,865	48,439	740,390
	Dec.	667	6,933	917,809	925,408	141	2,640	48,367	874,260
2006	Apr.	667	6,965	783,483	791,115	173	2,652	42,092	746,197
	May	667	6,923	794,210	801,800	131	2,637	42,842	756,191
	Jun.	667	6,931	784,236	791,834	139	2,865	48,439	740,390
	Jul.	667	6,925	785,680	793,272	133	2,803	43,195	747,140
	Aug.	667	6,920	784,281	791,867	128	2,799	43,676	745,265
	Sep.	667	7,015	812,448	820,130	223	2,761	47,028	770,117
	Oct.	667	6,963	880,553	888,182	171	2,714	56,544	828,753
	Nov.	667	6,922	856,833	864,422	130	2,653	45,788	815,851
	Dec.	667	6,933	917,809	925,408	141	2,640	48,367	874,260
	Jan.	667	6,949	880,469	888,084	157	2,616	47,973	837,338
	Feb.	667	7,366	879,550	887,583	205	2,946	47,276	837,156
	Mar.	667	7,359	879,275	887,301	198	2,963	49,615	834,524
	Apr.	667	7,342	882,947	890,957	199	2,937	48,218	839,602

Note The quarter end data relate to last working day whereas monthly data are of last Saturday of the month . Source: Monetary. Policy Department SBP
Totals may not tally due to separate rounding off.