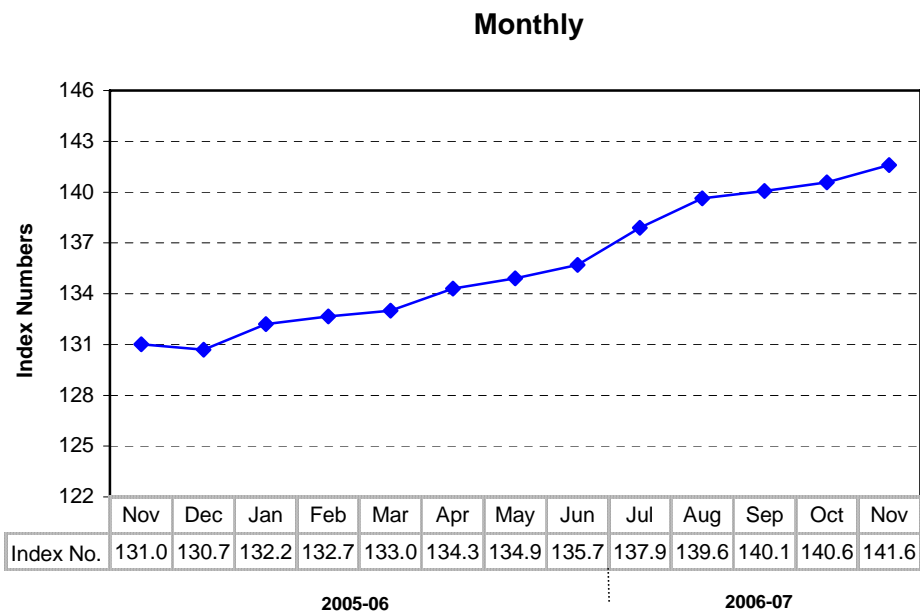
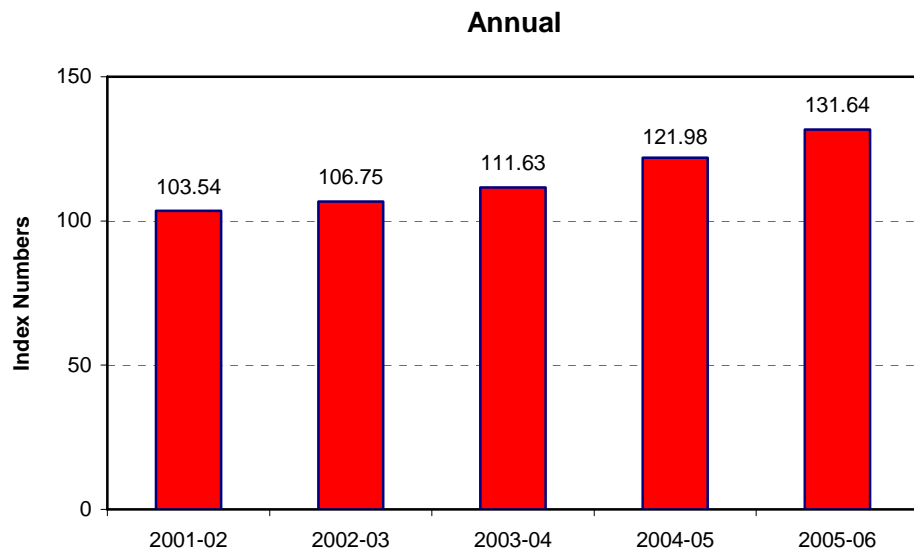


8.1 Combined Consumer Price Index Numbers by Commodity Groups - All Urban (Base: 2000-01=100)

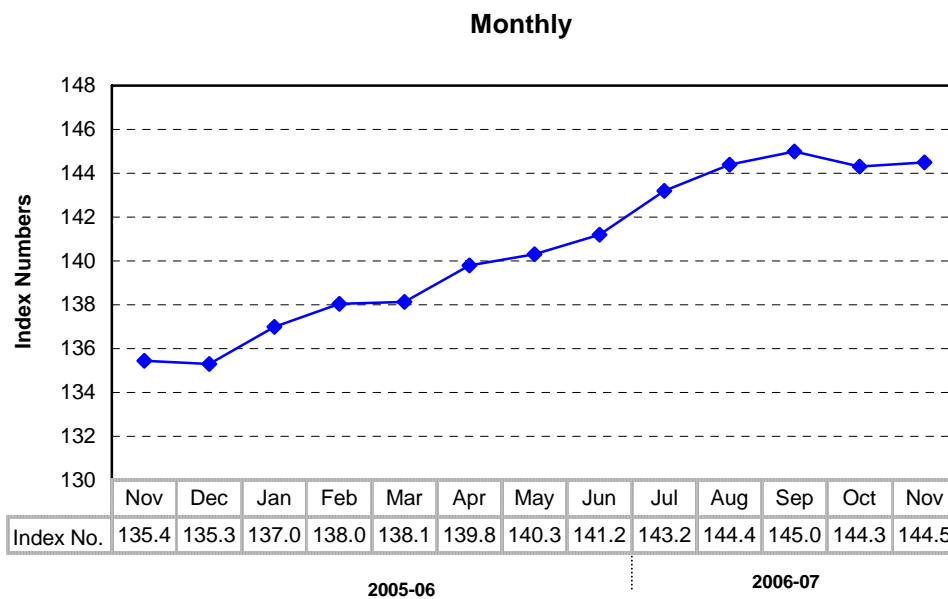
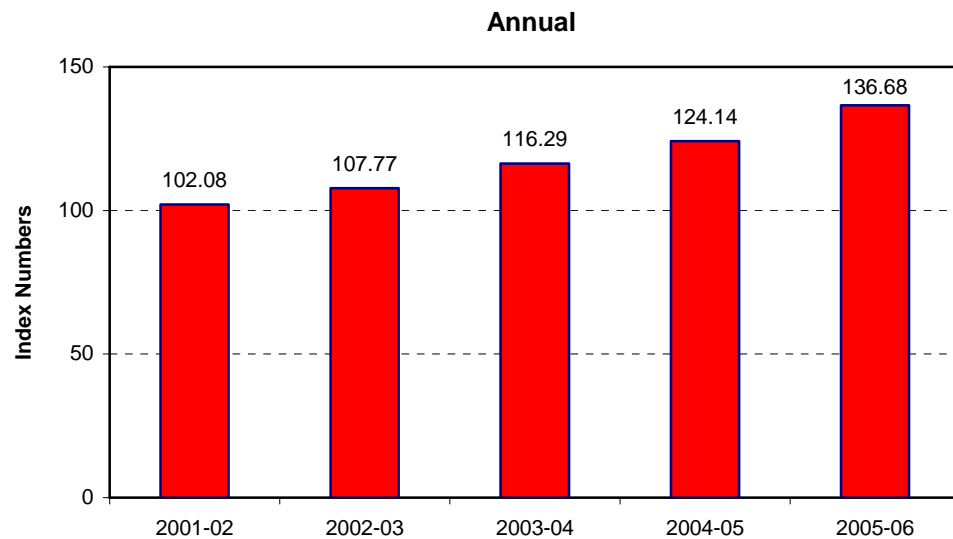
Year / Month		General	Food Beverages and Tobacco	Apparel Textile and Footwear	House Rent	Fuel and Lighting	Household Furniture and Equipment	Transpor- tation and Communi- cation	Recreation Entertain- ment & Education	Education	Cleaning Laundry and Personal Appearance	Medicare
2001-02		103.54	102.50	103.23	102.80	109.47	103.93	105.96	106.30	104.97	102.50	102.37
2002-03		106.75	105.40	106.78	103.54	117.81	106.90	111.60	107.21	109.92	107.37	105.59
2003-04		111.63	111.74	109.69	102.20	121.30	110.68	115.43	106.08	114.19	111.29	106.99
2004-05		121.98	125.69	112.98	120.42	125.77	117.34	125.11	105.93	117.55	115.90	107.94
2005-06		131.64	134.39	117.58	132.36	137.09	123.41	145.90	105.65	125.03	119.49	110.66
2005	Nov.	131.02	134.42	117.05	131.43	133.25	122.18	146.26	105.61	124.45	118.68	109.58
	Dec.	130.66	132.72	117.22	132.24	133.63	123.08	146.73	105.57	124.45	119.15	110.28
2006	Jan.	132.23	134.56	117.66	133.02	140.83	123.43	147.38	105.64	124.60	119.42	110.63
	Feb.	132.66	134.88	117.82	133.71	141.86	123.70	147.44	105.70	124.60	119.80	111.34
	Mar.	132.97	135.16	118.48	134.27	141.41	124.39	147.53	105.73	125.21	119.96	111.40
	Apr.	134.33	137.19	119.04	135.10	141.49	125.34	149.09	105.70	128.00	120.76	112.09
	May	134.94	137.25	119.53	135.91	142.90	126.52	150.09	105.71	128.83	122.70	112.48
	Jun.	135.73	138.87	119.92	136.62	142.41	127.37	150.19	105.74	128.85	121.67	113.04
	Jul.	137.91	142.51	120.16	137.36	147.39	128.11	150.87	105.80	129.69	122.52	113.37
	Aug.	139.63	145.70	120.44	138.12	148.50	128.58	151.08	105.82	130.14	122.85	117.75
	Sep.	140.07	145.90	120.55	138.90	148.74	129.41	151.38	105.84	131.84	122.77	120.17
	Oct.	140.57	146.67	121.02	139.53	148.12	129.86	151.44	105.86	133.20	122.56	120.26
	Nov.	141.59	148.69	121.32	140.14	147.26	130.59	151.60	105.87	133.47	123.54	120.26

Source : Federal Bureau of Statistics

Index Numbers of Consumer Prices (2000 - 01=100)



(2000- 01=100)



8.2 Index Numbers of Wholesale Prices by Commodity Groups (Base: 2000-01=100)

Year/ Month		General	Food	Raw Materials	Fuel,Lighting and Lubricants	Manufactures	Building Materials
2001-02		102.08	102.05	100.95	103.08	101.91	101.18
2002-03		107.77	105.62	115.51	115.95	103.67	102.90
2003-04		116.29	112.99	135.12	116.23	111.83	126.46
2004-05		124.14	125.03	110.44	138.01	113.05	143.79
2005-06		136.68	133.78	121.93	174.57	115.39	144.18
2005 Nov.		135.44	132.91	119.33	172.53	115.16	144.99
Dec.		135.26	132.07	120.13	172.54	115.99	142.76
2006 Jan.		136.99	133.17	124.96	177.31	116.30	140.06
Feb.		138.04	134.09	125.92	179.01	117.18	140.82
Mar.		138.13	134.26	123.97	179.54	117.36	141.25
Apr.		139.83	136.28	123.41	182.28	117.80	146.73
May		140.32	136.83	124.51	182.31	118.30	147.50
Jun.		141.21	137.79	128.98	182.31	118.89	146.89
Jul.		143.22	139.90	132.20	185.41	119.64	148.50
Aug.		144.35	142.43	132.15	185.52	119.88	147.99
Sep.		144.97	143.16	136.50	185.54	119.90	147.04
Oct.		144.26	143.41	128.25	185.88	119.03	147.19
Nov.		144.54	145.02	135.10	186.12	118.76	148.78

Source : Federal Bureau of Statistics

8.3 Combined Sensitive Price Indicator (SPI) by Income Groups (Base 2000-01 =100)

Year/ Month		INCOME GROUP				Combined
		Group-I	Group-II	Group-III	Group-IV	
		Up to Rs.3000	Rs.3001 to Rs.5000	Rs.5001 to Rs.12000	Above Rs.12000	
2001-02		103.36	103.74	103.60	104.06	103.60
2002-03		107.06	107.77	107.66	108.49	107.53
2003-04		114.38	114.88	114.32	114.58	113.93
2004-05		127.59	127.50	127.01	127.35	126.52
2005-06		136.56	136.15	135.99	139.80	136.43
2005	Oct.	133.58	133.32	133.39	138.13	134.59
	Nov.	134.76	134.55	134.69	139.39	135.89
	Dec.	134.43	134.06	134.08	138.78	135.21
2006	Jan.	135.51	135.35	135.41	139.87	135.82
	Feb.	137.49	137.10	136.79	140.61	136.71
	Mar.	138.65	138.07	137.59	141.11	137.54
	Apr.	140.50	139.72	139.19	142.54	139.21
	May	141.42	140.44	139.92	143.76	140.06
	Jun.	142.76	141.98	141.91	146.18	142.25
	Jul.	144.70	144.24	144.52	148.85	144.62
	Aug.	147.85	147.34	147.55	151.34	147.28
	Sep.	148.46	147.68	147.65	151.19	147.23
	Oct.	149.29	148.41	148.31	151.71	147.90

Note: SPI figures revised as it is computed on 53 items instead of 51 items.

Source : Federal Bureau of Statistics

8.4 Bullion Prices

		(Rupees per 10 grams)			
Year / Month		GOLD TEZABI		SILVER TEZABI	
		Karachi	Lahore	Karachi	Lahore
2001- 02		5,865	5,893	93	94
2002-03		6,378	6,398	90	94
2003-04		7,328	7,337	92	111
2004-05		8,216	8,238	118	138
2005-06		10,317	10,307	180	176
2005	Nov.	9,369	9,356	165	150
	Dec.	9,968	9,946	178	160
2006	Jan.	10,888	10,524	180	168
	Feb.	10,836	10,952	180	173
	Mar.	10,856	10,852	180	182
	Apr.	11,872	11,881	180	243
	May	13,210	13,255	241	256
	Jun.	11,767	11,830	199	200
	Jul.	12,614	12,681	208	215
	Aug.	12,517	12,374	208	213
	Sep.	11,879	11,836	196	203
	Oct.	11,700	11,753	204	208
	Nov.	12,448	12,446	222	229

Figures are monthly / yearly averages

Source: Daily Business Recorder