

6.1 Government of Pakistan Treasury Bills

(Million Rupees)

PERIOD		3 months Government of Pakistan Treasury Bills					6 months Government of Pakistan Treasury Bills		
		Issue	Discount		Discount Paid	Outstanding Balance	Issue	Discount	
			Allowed	Discharged				Allowed	Discharged
2001	Jun.	9,218.9	251.1	23,794.9	605.1	14,679.1	13,821.4	879.5	379.3
	Dec.	982.7	17.3	6,255.8	144.2	7,954.8	8,079.2	321.7	13,820.9
2002	Jun.	-	-	4,934.9	65.2	11,250.2	12,943.9	407.0	8,079.2
	Dec.	495.6	4.5	-	-	495.6	12,970.3	279.7	12,943.9
2003	Jun.	-	-	17,222.3	77.7	498.1	1,487.7	12.4	12,970.3
	Dec.	-	-	5,183.2	16.8	10,365.2	297.6	2.4	24,976.9
2004	Jun.	-	-	20,926.6	73.4	30,356.2	-	-	297.6
	Dec.	15,113.8	136.2	17,332.4	117.6	61,089.6	-	-	-
2005	Jun.	74,533.5	1,237.8	76,332.8	867.2	254,698.5	59,097.9	273.1	-
	Dec.	2,734.1	50.9	8,280.6	154.4	14,615.3	1,728.9	71.1	59,097.9
2006	Jun.	1,800.8	34.2	12,109.3	225.7	2,095.3	623.8	26.2	1,728.9
2005	Nov.	3,683.9	68.7	103,253.9	1,896.1	20,161.8	912.5	37.5	490.9
	Dec.	2,734.1	50.9	8,280.6	154.4	14,615.3	1,728.9	71.1	59,097.9
2006	Jan.	13,767.0	256.6	8,197.2	152.8	20,185.0	2,669.6	110.3	35,512.7
	Feb.	5,988.4	111.6	3,683.9	68.7	22,489.5	480.2	19.9	15,527.7
	Mar.	13,581.8	253.2	16,304.8	303.9	19,766.5	3,872.5	160.1	4,997.5
	Apr.	98.2	1.8	3,534.1	65.9	16,330.6	96.0	4.0	480.5
	May	196.3	3.7	4,123.1	76.9	12,403.8	192.0	8.0	912.5
	Jun.	1,800.8	34.2	12,109.3	225.7	2,095.3	623.8	26.2	1,728.9
	Jul.	47,494.9	908.9	98.2	3.7	49,492.0	6,559.5	277.5	2,669.6
	Aug.	21,128.4	421.6	1,702.7	32.3	68,917.6	7,184.3	315.7	968.0
	Sep.	27,846.2	553.8	43,668.2	835.6	53,095.6	5,149.4	226.3	3,384.7
	Oct.	5,588.9	111.2	10,053.5	196.5	48,631.0	8,637.1	379.6	96.0
	Nov.	14,612.6	287.5	15,196.0	304.1	48,047.6	10,633.7	466.4	192.0

Note : Six months Government of Pakistan Treasury Bills restarted w. e. f. June 1998 and 3 & 12 months Government of Pakistan Treasury Bills restarted w.e.f July 1998.

6.1 Government of Pakistan Treasury Bills

(Million Rupees)

PERIOD		6 months Government of Pakistan Treasury Bills		12 months Government of Pakistan Treasury Bills (Auctioned and Rollover)				
		Discount Paid	Outstanding Balance	Issue	Discount Allowed	Discharged	Discount Paid	Outstanding Balance
2001	Jun.	20.7	40,986.1	3,367.7	432.3	-	-	48,431.8
	Dec.	879.5	42,737.7	2,869.3	241.0	206.0	23.6	59,872.5
2002	Jun.	321.7	118,439.3	1,682.6	117.4	3,367.7	432.3	78,443.8
	Dec.	407.0	192,607.3	18,829.1	820.9	2,869.3	241.0	180,325.0
2003	Jun.	279.7	148,617.6	25,403.2	596.8	1,682.6	117.4	253,908.5
	Dec.	223.1	78,346.6	392.3	7.7	18,829.1	820.9	297,695.1
2004	Jun.	2.4	78,909.1	-	-	25,403.2	596.8	236,420.9
	Dec.	-	118,457.3	-	-	196.1	3.9	91,601.7
2005	Jun.	-	132,708.3	48,360.1	1,229.2	-	-	65,798.8
	Dec.	2,335.8	59,159.9	82,036.8	7,174.7	-	-	329,870.2
2006	Jun.	71.1	7,934.1	28,686.2	2,513.8	48,360.1	4,039.9	422,647.0
2005	Nov.	19.1	116,528.8	59,676.1	5,218.9	287.3	12.7	247,719.7
	Dec.	2,335.8	59,159.9	82,150.5	7,184.7	-	-	329,870.2
2006	Jan.	1,412.3	26,316.7	39,647.9	3,468.4	1,239.4	60.6	368,278.7
	Feb.	622.3	11,269.1	13,561.8	1,188.3	94.8	5.2	381,745.6
	Mar.	202.5	10,144.2	53,022.2	4,646.4	2,968.7	169.4	431,799.2
	Apr.	19.5	9,759.7	13,929.3	1,220.7	1,774.3	125.7	443,954.1
	May	37.5	9,039.2	1,379.1	120.9	3,012.3	237.7	442,320.9
	Jun.	71.1	7,934.1	28,686.2	2,513.8	48,360.1	4,039.9	422,647.0
	Jul.	75.3	11,824.1	37,889.9	3,321.1	62,892.7	5,332.3	397,644.2
	Aug.	40.0	18,040.3	490.9	44.1	45,035.0	3,915.0	353,100.1
	Sep.	139.9	19,805.0	4,782.8	429.5	8,596.7	753.6	349,286.2
	Oct.	3.9	28,346.1	22,781.3	2,045.7	14,069.5	1,230.5	357,997.9
	Nov.	8.0	38,787.7	80,318.0	7,205.0	59,676.1	5,218.9	378,639.8

Source: Financial Markets Strategy & Conduct Department, SBP

6.2 Sale / Purchase of Treasury Bills under Open Market Operation by SBP with Banks

SALE

(Billion Rupees)

PERIOD	2002-03		2003-04		2004-05		2005-06		2006-07	
	Bid Amount		Bid Amount		Bid Amount		Bid Amount		Bid Amount	
	Offered	Accepted	Offered	Accepted	Offered	Accepted	Offered	Accepted	Offered	Accepted
July	16.8	12.0	72.1	41.5	74.3	71.5	56.5	46.8	159.3	133.5
August	-	-	19.5	8.0	66.9	57.9	86.0	65.2	131.9	105.7
September	30.1	16.9	101.8	76.0	13.2	4.0	83.9	69.7	107.0	87.0
October	-	-	29.9	13.0	61.8	52.6	14.0	9.0	92.9	81.3
November	27.4	13.0	-	-	59.9	42.4	32.0	26.5	71.5	61.9
December	-	-	32.5	29.5	103.2	95.2	159.2	95.9		
January	-	-	62.7	54.5	15.4	6.5	82.5	67.1		
February	-	-	26.6	22.0	60.8	56.6	80.5	64.7		
March	-	-	26.9	16.6	83.7	60.8	44.5	41.1		
April	-	-	27.3	24.0	90.9	49.6	-	-		
May	-	-	16.0	4.9	73.1	49.2	6.6	4.0		
June	53.2	25.0	145.2	120.9	95.5	64.9	235.4	153.8		
Average										
per month	10.6	5.6	46.7	34.2	66.5	50.9	73.4	53.6	112.5	93.9
per day	0.4	0.2	1.6	1.1	2.2	1.7	2.5	1.8	3.8	3.1

PURCHASE

PERIOD	Amount		Amount		Amount		Amount		Amount	
	Offered	Injected	Offered	Injected	Offered	Injected	Offered	Injected	Offered	Injected
July	81.4	51.7	-	-	-	-	-	-	-	-
August	-	-	-	-	-	-	11.2	8.3	27.2	21.2
September	-	-	-	-	-	-	-	-	-	-
October	-	-	7.8	3.5	16.1	14.0	66.9	38.5	-	-
November	-	-	85.9	56.7	-	-	123.6	74.1	-	-
December	-	-	29.3	16.5	-	-	-	-	-	-
January	-	-	-	-	40.3	21.3	139.6	111.5	-	-
February	-	-	-	-	-	-	60.6	42.8	-	-
March	-	-	-	-	-	-	12.7	10.7	-	-
April	-	-	-	-	-	-	210.5	96.9	-	-
May	6.1	3.1	-	-	20.0	9.0	91.4	46.7	-	-
June	-	-	-	-	-	-	-	-	-	-
Average										
per month	7.3	4.6	10.2	6.4	6.4	3.7	59.7	35.8	5.4	4.2
per day	0.2	0.2	0.3	0.2	0.2	0.1	2.0	1.2	0.2	0.2

Source: Financial Markets Strategy & Conduct Department, SBP

6.3 SBP 3-Day Repo Facility MTBs / FIBs / PIBs (Outstanding)

Cash Accommodation

(Million Rupees)

PERIOD	2001-02	2002-03	2003-04	2004-05	2005-06	2006-07
July	75,176	94,168	-	700	23,861	38,883
August	38,835	9,490	-	10,600	48,241	19,032
September	47,412	87,535	-	84,760	45,245	66,715
October	107,366	214,984	10,440	63,324	116,512	27,670
November	211,461	103,241	400	14,098	91,780	77,702
December	17,261	29,775	-	-	4,520	
January	17,355	140,540	1,350	115,134	29,760	
February	101,956	2,500	8,340	-	12,032	
March	10,368	-	-	21,695	47,815	
April	45,803	6,625	24,745	800	243,238	
May	130,386	-	1,245	70,787	55,246	
June	24,972	-	-	139,550	44,019	
Average						
per month	69,029	57,405	3,877	43,454	63,522	46,000
per day	2,301	1,913	129	1,448	2,117	1,533

SBP 3-Day Repo Rates

(Percent per annum)

July	13.00	9.00	7.50	7.50	9.00	9.50
August	12.00	9.00	7.50	7.50	9.00	9.50
September	12.00	9.00	7.50	7.50	9.00	9.50
October	10.00	9.00	7.50	7.50	9.00	9.50
November	10.00	7.50	7.50	7.50	9.00	9.50
December	10.00	7.50	7.50	7.50	9.00	
January	9.00	7.50	7.50	7.50	9.00	
February	9.00	7.50	7.50	7.50	9.00	
March	9.00	7.50	7.50	7.50	9.00	
April	9.00	7.50	7.50	9.00	9.00	
May	9.00	7.50	7.50	9.00	9.00	
June	9.00	7.50	7.50	9.00	9.00	

Note: Rates applicable against T-bills & FIBs, PIBs

Source: Financial Markets Strategy & Conduct Department,
SBP

6.4 Auction of Government of Pakistan Market Treasury Bills (Auction Wise)

AUCTION SETTLEMENT DATE	3 Months Treasury Bills				6 Months Treasury Bills	
	Amount Offered	Amount Accepted	Cutt-off Yield (%)	Weighted Average (%)	Amount Offered	Amount Accepted
2005-06						
8-12-05	1,758	Rejected	Rejected	Rejected	9,700	Rejected
22-12-05	9,685	2,785	8.1000	8.0895	13,850	1,800
05-01-06	19,600	13,800	8.1000	8.1000	4,300	1,300
19-01-06	1,500	200	8.1000	8.1000	3,450	600
02-02-06	13,550	3,400	8.1000	8.1000	3,800	500
16-02-06	8,200	2,700	8.1000	8.1000	3,850	Rejected
02-03-06	14,000	1,500	8.1000	8.1000	2,258	508
16-03-06	14,985	9,235	8.1000	8.1000	3,500	3,000
30-03-06	4,800	3,100	8.1000	8.1000	1,800	500
13-04-06	300	100	8.1000	8.1000	800	100
27-04-06	No Bid	No Bid	No Bid	No Bid	No Bid	No Bid
11-05-06	1,100	100	8.1000	8.1000	100	100
25-05-06	600	100	8.1000	8.1000	100	100
08-06-06	2,535	1,535	8.3256	8.2469	600	600
22-06-06	2,500	300	8.3256	8.3256	4,100	50
2006-07						
06-07-06	52,000	44,100	8.3256	8.3148	13,200	5,700
20-07-06	4,300	4,200	8.3256	8.3256	420	220
03-08-06	13,450	6,050	8.6417	8.6115	2,800	250
17-08-06	16,000	9,000	8.6294	8.6294	3,700	2,650
31-08-06	10,050	6,500	8.6417	8.6417	7,750	4,600
14-09-06	25,050	17,300	8.6417	8.6417	5,600	1,500
28-09-06	12,650	11,100	8.6417	8.6417	5,900	3,850
12-10-06	9,500	5,500	8.6417	8.6417	2,500	1,000
27-10-06	2,750	200	8.6417	8.6417	8,550	8,000
10-11-06	15,200	13,000	8.6544	8.6368	5,800	4,800
23-11-06	2,250	1,900	8.6417	8.6417	7,650	6,300

6.4 Auction of Government of Pakistan Market Treasury Bills (Auction Wise)

(Million Rupees)

AUCTION SETTLEMENT DATE	6 Months Treasury Bills		12 Months Treasury Bills			
	Cutt-off Yield (%)	Weighted Average (%)	Amount Offered	Amount Accepted	Cutt-off Yield (%)	Weighted Average (%)
2005-06						
8-12-05	Rejected	Rejected	25,500	19,600	8.7907	8.7874
22-12-05	8.2910	8.2451	72,012	69,612	8.7907	8.7648
05-01-06	8.2910	8.2742	38,125	34,725	8.7907	8.7768
19-01-06	8.2910	8.2910	9,795	8,345	8.7907	8.7523
02-02-06	8.2910	8.2910	13,050	11,250	8.7907	8.7843
16-02-06	Rejected	Rejected	5,800	3,500	8.7907	8.7907
02-03-06	8.2910	8.2910	6,850	6,000	8.7907	8.7808
16-03-06	8.2910	8.2910	16,300	14,200	8.7907	8.7832
30-03-06	8.2910	8.2910	38,915	36,915	8.7907	8.7897
13-04-06	8.2910	8.2910	16,050	14,650	8.7907	8.7878
27-04-06	No Bid	No Bid	600	500	8.7907	8.7907
11-05-06	8.2889	8.2889	1,200	500	8.7907	8.7907
25-05-06	8.2910	8.2910	1,500	1,000	8.7907	8.7907
08-06-06	8.4433	8.4179	28,600	25,700	8.7907	8.7863
22-06-06	8.4869	8.4869	8,300	5,500	8.7907	8.7907
2006-07						
06-07-06	8.4869	8.4850	31,175	29,875	8.7907	8.7903
20-07-06	8.4869	8.4869	11,336	11,336	8.7907	8.7865
03-08-06	8.8142	8.8098	9,100	100	9.0046	9.0046
17-08-06	8.8142	8.8142	7,200	100	9.0046	9.0046
31-08-06	8.8142	8.8142	3,335	335	9.0046	9.0046
14-09-06	8.8142	8.8142	5,262	1,512	9.0046	9.0046
28-09-06	8.8142	8.8142	8,200	3,700	9.0046	9.0046
12-10-06	8.8142	8.8142	14,327	9,827	9.0046	9.0046
27-10-06	8.8142	8.8142	15,300	15,000	9.0046	9.0046
10-11-06	8.8190	8.8190	31,400	30,000	9.0055	9.0020
23-11-06	8.8142	8.8142	61,523	57,523	9.0046	9.0046

Source: Financial Markets Strategy & Conduct Department, SBP

6.5 Auction of Pakistan Investment Bonds (PIBs)

(Million Rupees)							
AUCTION SETTLEMENT DATE	Tenure	Coupon Rate (%)	Amount Offered	Amount Accepted	Price Accepted = Rs.100	Cut-off Yield Accepted (%)	Weighted Average Yield Accepted (%)
09-06-04	15-Years	9.00	8,410.90	3,665.90	100.01	8.9988	8.9935
	20-Years	10.00	10,536.00	3,566.00	100.05	9.9942	9.9927
2004-05							
18-08-04	3-Years	6.00	1,750.00	50.00	101.64	5.4005	5.4005
	5-Years	7.00	1,403.00	226.50	100.84	6.7990	6.3309
	10-Years	8.00	1,600.00	150.00	100.00	8.0000	7.9297
12-11-04	3-Years	6.00	350.00	-	-	-	-
	5-Years	7.00	800.00	150.00	101.05	6.7491	6.6994
	10-Years	8.00	875.00	50.00	100.54	7.9208	7.9208
28-03-05	3-Years	6.00	300.00	50.00	99.06	6.3500	6.3500
	5-Years	7.00	400.00	50.00	97.95	7.5000	7.5000
	10-Years	8.00	438.00	44.00	99.32	8.1000	8.1000
2005-06							
19-05-06	3-Years	9.10	3,896.20	3,205.20	99.10	9.4515	9.3887
	5-Years	9.30	6,526.20	4,608.14	98.57	9.6674	9.6461
	10-Years	9.60	5,590.00	3,424.05	98.28	9.8746	9.8454
2006-07							
31-10-06	3-Years	9.10	4,055.00	3,502.50	98.34	9.8469	9.7776
	5-Years	9.30	2,150.00	1,392.40	97.64	9.9545	9.9298
	10-Years	9.60	6,775.00	3,644.20	95.10	10.4203	10.3945
	15-Years	10.00	3,650.00	3,000.00	93.28	10.9207	10.8504
	20-Years	10.50	4,150.00	4,000.00	94.08	11.2500	11.1727

Source: Financial Markets Strategy & Conduct Department, SBP

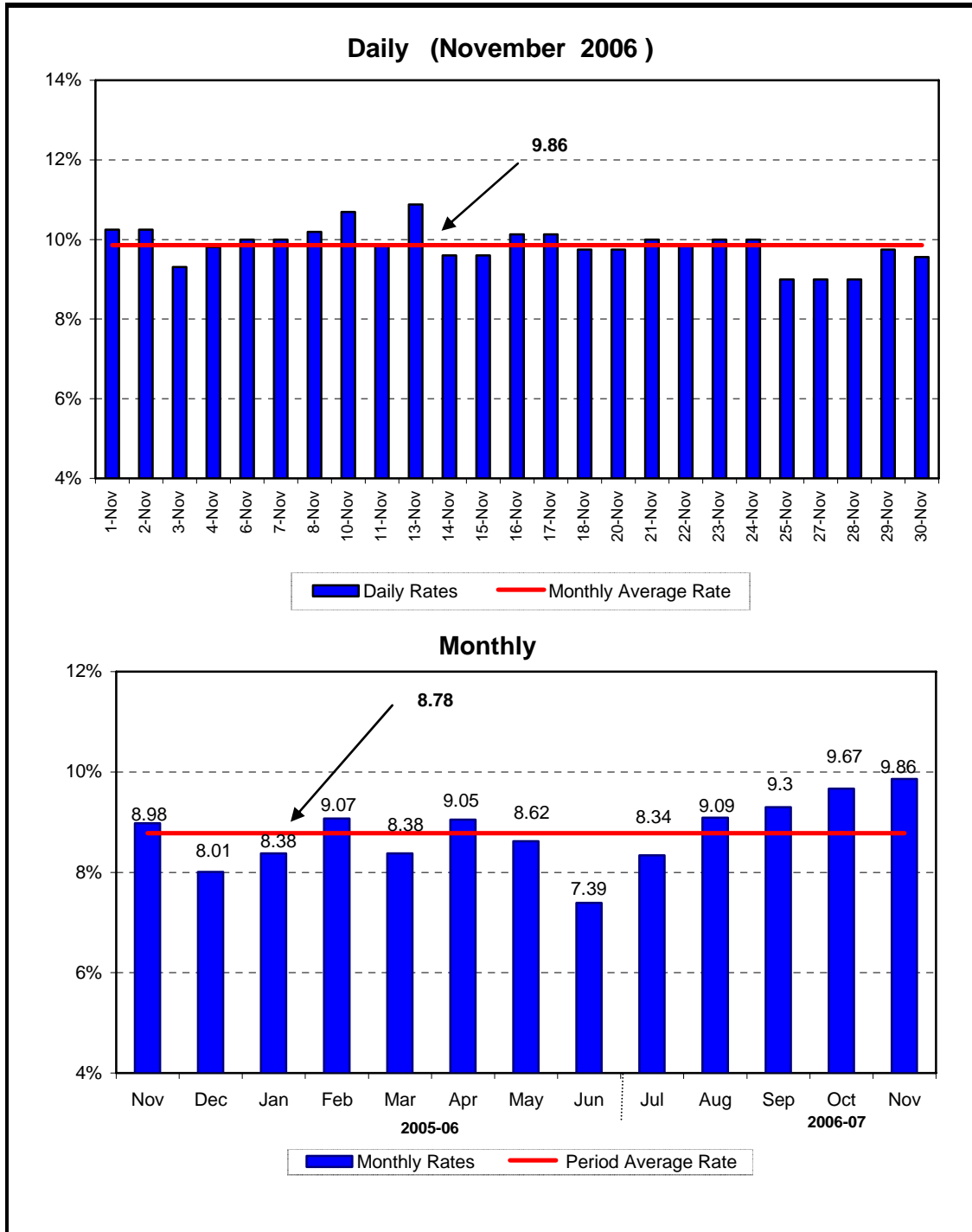
6.6 Monthly KIBOR

			(Percent per annum)													
Period			1 Week		2 Week		1Month		3 Month		6 Month		9 Month		12 Month	
			Bid	Offer	Bid	Offer	Bid	Offer	Bid	Offer	Bid	Offer	Bid	Offer	Bid	Offer
2005	Nov.	Month Average	8.13	9.13	8.27	8.77	8.33	8.83	8.48	8.98	8.63	9.13	8.82	9.32	9.09	9.59
		End-Month	8.25	9.25	8.35	8.85	8.36	8.86	8.55	9.05	8.69	9.19	8.87	9.37	9.10	9.60
	Dec.	Month Average	7.51	8.51	7.85	8.35	8.14	8.64	8.40	8.90	8.64	9.14	8.88	9.38	9.11	9.61
		End-Month	7.39	8.39	7.70	8.20	7.92	8.42	8.26	8.76	8.55	9.05	8.85	9.35	9.08	9.58
2006	Jan.	Month Average	7.84	8.84	8.07	8.57	8.19	8.69	8.38	8.88	8.63	9.13	8.87	9.37	9.11	9.61
		End-Month	7.93	8.93	8.14	8.64	8.26	8.76	8.48	8.98	8.73	9.23	8.91	9.41	9.13	9.63
	Feb.	Month Average	7.92	8.92	8.11	8.61	8.24	8.74	8.50	9.00	8.75	9.25	8.94	9.44	9.17	9.67
		End-Month	7.97	8.97	8.09	8.59	8.21	8.71	8.58	9.08	8.89	9.39	9.05	9.55	9.28	9.78
	Mar.	Month Average	7.85	8.85	8.07	8.57	8.19	8.69	8.52	9.02	8.84	9.34	9.06	9.56	9.25	9.75
		End-Month	8.22	9.22	8.31	8.81	8.34	8.84	8.63	9.13	8.93	9.43	9.11	9.61	9.29	9.79
	Apr.	Month Average	8.46	9.46	8.54	9.04	8.55	9.05	8.73	9.23	8.98	9.48	9.17	9.67	9.35	9.85
		End-Month	8.71	9.71	8.74	9.24	8.76	9.26	8.87	9.37	9.10	9.60	9.25	9.75	9.45	9.95
	May.	Month Average	8.52	9.52	8.64	9.14	8.71	9.21	8.89	9.39	9.17	9.67	9.33	9.83	9.55	10.05
		End-Month	8.36	9.36	8.48	8.98	8.56	9.06	8.82	9.32	9.16	9.66	9.35	9.85	9.55	10.05
	Jun.	Month Average	7.93	8.93	8.21	8.71	8.37	8.87	8.76	9.26	9.18	9.68	9.40	9.90	9.58	10.08
		End-Month	7.01	8.01	7.75	8.25	8.12	8.62	8.70	9.20	9.11	9.61	9.35	9.85	9.56	10.06
	Jul.	Month Average	8.09	9.09	8.45	8.95	8.66	9.16	9.04	9.54	9.41	9.91	9.63	10.13	9.84	10.34
		End-Month	9.10	10.10	9.39	9.89	9.57	10.07	9.87	10.37	10.15	10.65	10.34	10.84	10.55	11.05
	Aug.	Month Average	8.58	9.58	8.86	9.36	9.12	9.62	9.58	10.08	9.92	10.42	10.15	10.65	10.36	10.86
		End-Month	8.64	9.64	8.84	9.34	9.12	9.62	9.53	10.03	9.87	10.37	10.13	10.63	10.37	10.87
	Sep.	Month Average	8.47	9.47	8.74	9.24	8.99	9.49	9.51	10.01	9.87	10.37	10.11	10.61	10.32	10.82
		End-Month	8.44	9.44	8.70	9.20	8.99	9.49	9.56	10.06	9.90	10.40	10.13	10.63	10.32	10.82
	Oct.	Month Average	8.63	9.63	8.88	9.38	9.14	9.64	9.76	10.26	10.01	10.51	10.21	10.71	10.37	10.87
		End-Month	8.75	9.75	8.95	9.45	9.25	9.75	9.82	10.32	10.08	10.58	10.27	10.77	10.41	10.91
	Nov.	Month Average	8.74	9.74	8.89	9.39	9.14	9.64	9.80	10.30	10.06	10.56	10.25	10.75	10.41	10.91
		End-Month	8.79	9.79	8.86	9.36	9.13	9.63	9.79	10.29	10.07	10.57	10.24	10.74	10.41	10.91

KIBOR :Karachi Interbank Offered Rate

Source: Financial Markets Strategy & Conduct Department, SBP

Call Money Rate



6.7 Call Money Rate

(Percent per annum)						
MONTH	2001-02	2002-03	2003-04	2004-05	2005-06	2006-07
July	6.94	5.59	0.74	1.90	8.52	8.34
August	8.30	5.32	1.40	3.03	7.78	9.09
September	9.19	7.30	1.01	5.51	8.09	9.30
October	10.41	7.96	2.34	3.40	9.23	9.67
November	9.36	4.90	2.67	4.04	8.98	9.86
December	6.09	4.61	2.43	2.79	8.01	
January	3.61	4.12	1.72	6.53	8.38	
February	5.48	2.36	2.57	2.67	9.07	
March	4.75	1.14	0.99	5.02	8.38	
April	5.66	2.71	3.38	3.95	9.05	
May	6.31	3.83	1.65	6.37	8.62	
June	4.83	0.92	1.46	6.85	7.39	
Average of the period	6.74	4.23	1.86	4.34	8.46	

Source: Daily Business Recorder

6.8 SBP Rates for Market to Market (M 2 M) of Major Currencies

MONTH	US Dollar			Euro			Japanese Yen			Pound Sterling		
	Ready	1Week	1Month	Ready	1Week	1Month	Ready	1Week	1Month	Ready	1Week	1 Month
01-Nov-06	60.6270	60.6683	60.7865	77.3479	77.4296	77.6804	0.5179	0.5188	0.5214	115.7278	115.8170	116.0636
02-Nov-06	60.6170	60.6618	60.7848	77.3715	77.4570	77.7096	0.5178	0.5187	0.5214	115.6542	115.7483	116.0026
03-Nov-06	60.6495	60.6698	60.7975	77.4706	77.5254	77.7846	0.5180	0.5186	0.5214	115.7587	115.8051	116.0685
04-Nov-06	60.6525	60.6840	60.8070	77.1621	77.2309	77.4829	0.5140	0.5147	0.5174	115.3156	115.3831	115.6364
06-Nov-06	60.6870	60.7203	60.8405	77.0968	77.1680	77.4161	0.5133	0.5140	0.5167	115.1505	115.2207	115.4689
07-Nov-06	60.7015	60.7315	60.8508	77.5067	77.5743	77.8310	0.5154	0.5161	0.5189	115.6910	115.7543	116.0019
08-Nov-06	60.7115	60.7463	60.8655	77.6773	77.7509	78.0042	0.5168	0.5176	0.5203	115.8770	115.9492	116.1964
10-Nov-06	60.7235	60.7590	60.8765	78.2270	78.3019	78.5497	0.5173	0.5181	0.5207	116.2339	116.3072	116.5502
11-Nov-06	60.7135	60.7495	60.8695	77.9743	78.0497	78.2996	0.5162	0.5171	0.5197	116.0387	116.1127	116.3597
13-Nov-06	60.7240	60.7548	60.8765	78.0607	78.1295	78.3815	0.5170	0.5178	0.5204	116.0345	116.0986	116.3493
14-Nov-06	60.7350	60.7753	60.8950	77.9625	78.0475	78.2994	0.5158	0.5167	0.5194	115.6182	115.7009	115.9476
15-Nov-06	60.7930	60.8323	60.9495	77.9701	78.0498	78.2985	0.5159	0.5168	0.5195	115.2483	115.3282	115.5691
16-Nov-06	60.7840	60.8303	60.9505	77.8491	77.9376	78.1850	0.5145	0.5154	0.5180	114.8423	114.9352	115.1809
17-Nov-06	60.8070	60.8443	60.9625	77.7296	77.8064	78.0502	0.5141	0.5149	0.5176	114.6607	114.7365	114.9774
18-Nov-06	60.8295	60.8675	60.9875	78.0473	78.1253	78.3721	0.5169	0.5177	0.5204	115.3236	115.4010	115.6454
20-Nov-06	60.8850	60.9220	61.0385	78.1246	78.2015	78.4433	0.5156	0.5164	0.5190	115.3801	115.4557	115.6944
21-Nov-06	60.8310	60.8670	60.9810	77.9762	78.0519	78.3004	0.5153	0.5161	0.5188	115.4299	115.5036	115.7404
22-Nov-06	60.8170	60.8543	60.9650	78.2745	78.3521	78.5966	0.5174	0.5183	0.5208	115.8290	115.9055	116.1356
23-Nov-06	60.7780	60.8185	60.9390	78.8564	78.9389	79.1851	0.5227	0.5235	0.5262	116.4385	116.5215	116.7698
24-Nov-06	60.7430	60.7825	60.9020	79.5156	79.5973	79.8440	0.5248	0.5256	0.5283	117.4436	117.5254	117.7732
25-Nov-06	60.7370	60.7743	60.8910	79.5321	79.6109	79.8535	0.5242	0.5250	0.5277	117.3408	117.4182	117.6606
27-Nov-06	60.7635	60.7915	60.9085	79.7734	79.8403	80.0835	0.5236	0.5244	0.5270	117.8174	117.8770	118.1211
28-Nov-06	60.8085	60.8468	60.9630	79.9480	80.0287	80.2670	0.5231	0.5240	0.5265	118.2300	118.3097	118.5525
29-Nov-06	60.8340	60.8718	60.9860	80.0667	80.1467	80.3929	0.5232	0.5241	0.5270	118.5442	118.6233	118.8620
30-Nov-06	60.8650	60.9013	61.0140	80.3327	80.4111	80.6500	0.5238	0.5246	0.5273	119.0915	119.1681	119.4047

6.8 SBP Rates for Market to Market (M 2 M) of Major Currencies

MONTH	Swiss Frank			Australian Dollar			Saudi Arabian Riyal			Kuwaiti Dinnar		
	Ready	1Week	1 Month	Ready	1Week	1 Month	Ready	1Week	1 Month	Ready	1Week	1 Month
01-Nov-06	48.7355	48.8026	49.0146	46.9010	46.9267	46.9890	16.1661	16.1774	16.2102	209.6442	209.7652	210.1013
02-Nov-06	48.6629	48.7329	48.9435	46.8145	46.8416	46.9092	16.1630	16.1752	16.2104	209.6060	209.7391	210.0918
03-Nov-06	48.6949	48.7452	48.9594	46.9639	46.9717	47.0431	16.1721	16.1780	16.2140	209.7256	209.7740	210.1429
04-Nov-06	48.3749	48.4337	48.6431	46.6084	46.6246	46.6917	16.1725	16.1811	16.2161	209.7541	209.8413	210.1939
06-Nov-06	48.3234	48.3835	48.5900	46.6167	46.6340	46.6987	16.1817	16.1915	16.2261	209.8480	209.9414	210.2916
07-Nov-06	48.5282	48.5857	48.8016	46.9708	46.9855	47.0482	16.1856	16.1938	16.2282	209.8982	209.9801	210.3272
08-Nov-06	48.6685	48.7302	48.9418	46.8116	46.8297	46.8923	16.1882	16.1984	16.2325	209.9473	210.0458	210.3925
10-Nov-06	49.1012	49.1641	49.3714	46.6751	46.6937	46.7560	16.1914	16.2016	16.2346	209.9742	210.0839	210.4160
11-Nov-06	48.8955	48.9586	49.1666	46.5096	46.5283	46.5926	16.1892	16.1995	16.2327	209.9433	210.0558	210.4136
13-Nov-06	49.0461	49.1047	49.3155	46.4964	46.5111	46.5764	16.1916	16.2007	16.2355	209.9760	210.0698	210.4524
14-Nov-06	48.9187	48.9896	49.2027	46.4926	46.5136	46.5762	16.1949	16.2066	16.2406	210.0213	210.1479	210.4872
15-Nov-06	48.7553	48.8204	49.0298	46.5158	46.5371	46.5973	16.2104	16.2218	16.2556	210.2218	210.3450	210.6756
16-Nov-06	48.6973	48.7677	48.9746	46.5150	46.5414	46.6054	16.2076	16.2209	16.2550	210.1834	210.3294	210.6827
17-Nov-06	48.6398	48.7031	48.9075	46.5842	46.6039	46.6665	16.2137	16.2246	16.2584	210.2630	210.3792	210.7132
18-Nov-06	48.9101	48.9744	49.1814	46.7718	46.7922	46.8559	16.2193	16.2301	16.2638	210.3626	210.4809	210.8397
20-Nov-06	48.9725	49.0360	49.2397	46.7932	46.8128	46.8742	16.2345	16.2453	16.2785	210.5327	210.6442	210.9832
21-Nov-06	48.9330	48.9957	49.2115	46.7790	46.7980	46.8539	16.2197	16.2304	16.2638	210.3678	210.4781	210.8100
22-Nov-06	49.1649	49.2289	49.4429	47.0389	47.0592	47.1134	16.2159	16.2272	16.2599	210.3048	210.4193	210.7364
23-Nov-06	49.6918	49.7590	49.9682	47.1060	47.1288	47.1939	16.2055	16.2176	16.2515	210.1700	210.2918	210.6393
24-Nov-06	50.2403	50.3071	50.5177	47.2854	47.3076	47.3723	16.1962	16.2077	16.2418	210.0489	210.1674	210.5187
25-Nov-06	50.2312	50.2966	50.5048	47.2929	47.3133	47.3758	16.1946	16.2055	16.2389	210.0282	210.1441	210.4770
27-Nov-06	50.3322	50.3898	50.5985	47.3591	47.3725	47.4353	16.2021	16.2109	16.2446	210.1198	210.2021	210.5411
28-Nov-06	50.4154	50.4816	50.6844	47.4093	47.4309	47.4944	16.2137	16.2252	16.2592	210.2754	210.3933	210.7295
29-Nov-06	50.3906	50.4562	50.6765	47.5691	47.5903	47.6491	16.2202	16.2315	16.2662	210.3782	210.4958	210.8345
30-Nov-06	50.4580	50.5222	50.7314	47.9038	47.9240	47.9839	16.2287	16.2396	16.2739	210.4745	210.5869	210.9204

Source: Financial Markets Strategy & Conduct Department, SBP