

## 6.1 Government of Pakistan Treasury Bills

(Million Rupees)

PERIOD		3 months Government of Pakistan Treasury Bills					6 months Government of Pakistan Treasury Bills		
		Issue	Discount		Discount Paid	Outstanding Balance	Issue	Discount	
			Allowed	Discharged				Allowed	Discharged
2001	Jun.	9,218.9	251.1	23,794.9	605.1	14,679.1	13,821.4	879.5	379.3
	Dec.	982.7	17.3	6,255.8	144.2	7,954.8	8,079.2	321.7	13,820.9
2002	Jun.	-	-	4,934.9	65.2	11,250.2	12,943.9	407.0	8,079.2
	Dec.	495.6	4.5	-	-	495.6	12,970.3	279.7	12,943.9
2003	Jun.	-	-	17,222.3	77.7	498.1	1,487.7	12.4	12,970.3
	Dec.	-	-	5,183.2	16.8	10,365.2	297.6	2.4	24,976.9
2004	Jun.	-	-	20,926.6	73.4	30,356.2	-	-	297.6
	Dec.	15,113.8	136.2	17,332.4	117.6	61,089.6	-	-	-
2005	Jun.	74,533.5	1,237.8	76,332.8	867.2	254,698.5	59,097.9	273.1	-
	Dec.	2,734.1	50.9	8,280.6	154.4	14,615.3	1,728.9	71.1	59,097.9
2006	Jun.	1,800.8	34.2	12,109.3	225.7	2,095.3	623.8	26.2	1,728.9
2005	Jul.	38,554.2	670.8	96,998.1	1,297.9	196,254.6	35,512.7	1,412.3	26,892.4
	Aug.	15,496.7	278.3	83,166.8	1,344.8	128,584.5	15,527.7	622.3	976.7
	Sep.	102,669.6	1,890.4	110,140.0	1,856.4	121,114.1	4,997.5	202.5	37,368.7
	Oct.	8,197.2	152.8	9,579.5	170.5	119,731.8	480.5	19.5	7,881.9
	Nov.	3,683.9	68.7	103,253.9	1,896.1	20,161.8	912.5	37.5	490.9
	Dec.	2,734.1	50.9	8,280.6	154.4	14,615.3	1,728.9	71.1	59,097.9
2006	Jan.	13,767.0	256.6	8,197.2	152.8	20,185.0	2,669.6	110.3	35,512.7
	Feb.	5,988.4	111.6	3,683.9	68.7	22,489.5	480.2	19.9	15,527.7
	Mar.	13,581.8	253.2	16,304.8	303.9	19,766.5	3,872.5	160.1	4,997.5
	Apr.	98.2	1.8	3,534.1	65.9	16,330.6	96.0	4.0	480.5
	May	196.3	3.7	4,123.1	76.9	12,403.8	192.0	8.0	912.5
	Jun.	1,800.8	34.2	12,109.3	225.7	2,095.3	623.8	26.2	1,728.9
	Jul.	47,494.9	908.9	98.2	3.7	49,492.0	6,559.5	277.5	2,669.6

Note : Six months Government of Pakistan Treasury Bills restarted w. e. f. June 1998 and 3 & 12 months Government of Pakistan Treasury Bills restarted w.e.f July 1998.

## 6.1 Government of Pakistan Treasury Bills

(Million Rupees)

PERIOD		6 months Government of Pakistan Treasury Bills		12 months Government of Pakistan Treasury Bills (Auctioned and Rollover)				
		Discount Paid	Outstanding Balance	Issue	Discount Allowed	Discharged	Discount Paid	Outstanding Balance
2001	Jun.	20.7	40,986.1	3,367.7	432.3	-	-	48,431.8
	Dec.	879.5	42,737.7	2,869.3	241.0	206.0	23.6	59,872.5
2002	Jun.	321.7	118,439.3	1,682.6	117.4	3,367.7	432.3	78,443.8
	Dec.	407.0	192,607.3	18,829.1	820.9	2,869.3	241.0	180,325.0
2003	Jun.	279.7	148,617.6	25,403.2	596.8	1,682.6	117.4	253,908.5
	Dec.	223.1	78,346.6	392.3	7.7	18,829.1	820.9	297,695.1
2004	Jun.	2.4	78,909.1	-	-	25,403.2	596.8	236,420.9
	Dec.	-	118,457.3	-	-	196.1	3.9	91,601.7
2005	Jun.	-	132,708.3	48,360.1	1,229.2	-	-	65,798.8
	Dec.	2,335.8	59,159.9	82,036.8	7,174.7	-	-	329,870.2
2006	Jun.	71.1	7,934.1	28,686.2	2,513.8	48,360.1	4,039.9	422,647.0
2005	Jul.	557.6	141,328.7	62,892.7	5,332.3	535.6	14.4	128,155.9
	Aug.	23.4	155,879.7	37,909.2	3,290.8	534.9	15.1	165,530.2
	Sep.	1,001.3	123,508.6	15,722.5	1,377.7	6,798.7	201.3	174,454.0
	Oct.	278.1	116,107.2	14,069.5	1,230.5	192.6	7.4	188,330.9
	Nov.	19.1	116,528.8	59,676.1	5,218.9	287.3	12.7	247,719.7
	Dec.	2,335.8	59,159.9	82,150.5	7,184.7	-	-	329,870.2
2006	Jan.	1,412.3	26,316.7	39,647.9	3,468.4	1,239.4	60.6	368,278.7
	Feb.	622.3	11,269.1	13,561.8	1,188.3	94.8	5.2	381,745.6
	Mar.	202.5	10,144.2	53,022.2	4,646.4	2,968.7	169.4	431,799.2
	Apr.	19.5	9,759.7	13,929.3	1,220.7	1,774.3	125.7	443,954.1
	May	37.5	9,039.2	1,379.1	120.9	3,012.3	237.7	442,320.9
	Jun.	71.1	7,934.1	28,686.2	2,513.8	48,360.1	4,039.9	422,647.0
	Jul.	75.3	11,824.1	37,889.9	3,321.1	62,892.7	5,332.3	397,644.2

## 6.2 Sale / Purchase of Treasury Bills Under Open Market Operation by SBP with Banks

### SALE

(Billion Rupees )

PERIOD	2002-03		2003-04		2004-05		2005-06		2006-07	
	Bid Amount		Bid Amount		Bid Amount		Bid Amount		Bid Amount	
	Offered	Accepted	Offered	Accepted	Offered	Accepted	Offered	Accepted	Offered	Accepted
July	16.8	12.0	72.1	41.5	74.3	71.5	56.5	46.8	159.3	133.5
August	-	-	19.5	8.0	66.9	57.9	86.0	65.2		
September	30.1	16.9	101.8	76.0	13.2	4.0	83.9	69.7		
October	-	-	29.9	13.0	61.8	52.6	14.0	9.0		
November	27.4	13.0	-	-	59.9	42.4	32.0	26.5		
December	-	-	32.5	29.5	103.2	95.2	159.2	95.9		
January	-	-	62.7	54.5	15.4	6.5	82.5	67.1		
February	-	-	26.6	22.0	60.8	56.6	80.5	64.7		
March	-	-	26.9	16.6	83.7	60.8	44.5	41.1		
April	-	-	27.3	24.0	90.9	49.6	-	-		
May	-	-	16.0	4.9	73.1	49.2	6.6	4.0		
June	53.2	25.0	145.2	120.9	95.5	64.9	235.4	153.8		
<b>Average</b>										
per month	10.6	5.6	46.7	34.2	66.5	50.9	73.4	53.6	159.3	133.5
per day	0.4	0.2	1.6	1.1	2.2	1.7	2.5	1.8	5.3	4.5

### PURCHASE

PERIOD	Amount		Amount		Amount		Amount		Amount	
	Offered	Injected	Offered	Injected	Offered	Injected	Offered	Injected	Offered	Injected
July	81.4	51.7	-	-	-	-	-	-	-	-
August	-	-	-	-	-	-	11.15	8.3		
September	-	-	-	-	-	-	-	-		
October	-	-	7.8	3.5	16.1	14.0	66.9	38.5		
November	-	-	85.9	56.7	-	-	123.6	74.1		
December	-	-	29.3	16.5	-	-	-	-		
January	-	-	-	-	40.3	21.3	139.6	111.5		
February	-	-	-	-	-	-	60.6	42.8		
March	-	-	-	-	-	-	12.7	10.7		
April	-	-	-	-	-	-	210.5	96.9		
May	6.1	3.1	-	-	20.0	9.0	91.4	46.7		
June	-	-	-	-	-	-	-	-		
<b>Average</b>										
per month	7.3	4.6	10.2	6.4	6.4	3.7	59.7	35.8	-	-
per day	0.2	0.2	0.3	0.2	0.2	0.1	2.0	1.2	-	-

Source: Exchange and Debt Management Department, SBP

### 6.3 SBP 3-Day Repo Facility MTBs / FIBs / PIBs (Outstanding)

#### Cash Accommodation

(Million Rupees)						
PERIOD	2001-02	2002-03	2003-04	2004-05	2005-06	2006-07
July	75,176	94,168	-	700	23,861	38,883
August	38,835	9,490	-	10,600	48,241	
September	47,412	87,535	-	84,760	45,245	
October	107,366	214,984	10,440	63,324	116,512	
November	211,461	103,241	400	14,098	91,780	
December	17,261	29,775	-	-	4,520	
January	17,355	140,540	1,350	115,134	29,760	
February	101,956	2,500	8,340	-	12,032	
March	10,368	-	-	21,695	47,815	
April	45,803	6,625	24,745	800	243,238	
May	130,386	-	1,245	70,787	55,246	
June	24,972	-	-	139,550	44,019	
<b>Average</b>						
per month	69,029	57,405	3,877	43,454	63,522	38,883
per day	2,301	1,913	129	1,448	2,117	1,296

#### SBP 3-Day Repo Rates

(Percent per annum)						
July	13.00	9.00	7.50	7.50	9.00	9.50
August	12.00	9.00	7.50	7.50	9.00	
September	12.00	9.00	7.50	7.50	9.00	
October	10.00	9.00	7.50	7.50	9.00	
November	10.00	7.50	7.50	7.50	9.00	
December	10.00	7.50	7.50	7.50	9.00	
January	9.00	7.50	7.50	7.50	9.00	
February	9.00	7.50	7.50	7.50	9.00	
March	9.00	7.50	7.50	7.50	9.00	
April	9.00	7.50	7.50	9.00	9.00	
May	9.00	7.50	7.50	9.00	9.00	
June	9.00	7.50	7.50	9.00	9.00	

Note: Rates applicable against T-bills & FIBs, PIBs

Source: Exchange and Debt Management Department, SBP

## 6.4 Auction of Government of Pakistan Market Treasury Bills (Auction Wise)

AUCTION SETTLEMENT DATE	3 Months Treasury Bills				6 Months Treasury Bills	
	Amount Offered	Amount Accepted	Cutt-off Yield ( % )	Weighted Average ( % )	Amount Offered	Amount Accepted
<b>2005-06</b>						
07-07-05	42,150	36,225	7.6946	7.5489	42,800	34,675
21-07-05	13,150	3,000	7.6946	7.6946	7,275	2,250
04-08-05	19,800	6,750	7.8297	7.7488	26,875	13,375
19-08-05	27,175	9,025	7.9197	7.8436	13,075	2,775
01-09-05	101,375	96,125	8.1000	7.9919	16,075	4,550
15-09-05	29,500	5,300	8.1000	8.1000	7,750	500
29-09-05	30,935	3,135	8.1000	8.1000	3,950	150
13-10-05	9,150	3,450	8.1000	8.1000	3,400	250
27-10-05	10,800	4,900	8.1000	8.0954	2,300	250
10-11-05	1,403	353	8.1000	8.1000	900	150
24-11-05	8,600	3,400	8.1000	8.1000	4,600	800
8-12-05	1,758	Rejected	Rejected	Rejected	9,700	Rejected
22-12-05	9,685	2,785	8.1000	8.0895	13,850	1,800
05-01-06	19,600	13,800	8.1000	8.1000	4,300	1,300
19-01-06	1,500	200	8.1000	8.1000	3,450	600
02-02-06	13,550	3,400	8.1000	8.1000	3,800	500
16-02-06	8,200	2,700	8.1000	8.1000	3,850	Rejected
02-03-06	14,000	1,500	8.1000	8.1000	2,258	508
16-03-06	14,985	9,235	8.1000	8.1000	3,500	3,000
30-03-06	4,800	3,100	8.1000	8.1000	1,800	500
13-04-06	300	100	8.1000	8.1000	800	100
27-04-06	No Bid	No Bid	No Bid	No Bid	No Bid	No Bid
11-05-06	1,100	100	8.1000	8.1000	100	100
25-05-06	600	100	8.1000	8.1000	100	100
08-06-06	2,535	1,535	8.3256	8.2469	600	600
22-06-06	2,500	300	8.3256	8.3256	4,100	50
<b>2006-07</b>						
06-07-06	52,000	44,100	8.3256	8.3148	13,200	5,700
20-07-06	4,300	4,200	8.3256	8.3256	420	220

## 6.4 Auction of Government of Pakistan Market Treasury Bills (Auction Wise)

(Million Rupees)

AUCTION SETTLEMENT  DATE	6 Months Treasury Bills		12 Months Treasury Bills			
	Cutt-off Yield ( % )	Weighted Average ( % )	Amount Offered	Amount Accepted	Cutt-off Yield ( % )	Weighted Average ( % )
<b>2005-06</b>						
07-07-05	7.9869	7.9761	58,100	54,825	8.6959	8.4561
21-07-05	7.9869	7.9677	24,642	13,400	8.6959	8.6884
04-08-05	8.0954	8.0231	45,100	38,350	8.7907	8.6986
19-08-05	8.1388	8.1056	11,800	2,850	8.7907	8.7865
01-09-05	8.1388	8.1245	13,800	7,750	8.7907	8.7830
15-09-05	8.1388	8.1388	6,800	3,900	8.7907	8.7907
29-09-05	8.1388	8.1388	9,300	5,450	8.7907	8.7896
13-10-05	8.1388	8.1388	4,300	700	8.7907	8.7907
27-10-05	8.1388	8.1388	14,900	14,600	8.7907	8.7687
10-11-05	8.1388	8.1388	18,650	7,150	8.7784	8.7674
24-11-05	8.2910	8.2583	65,045	57,745	8.7907	8.7666
8-12-05	Rejected	Rejected	25,500	19,600	8.7907	8.7874
22-12-05	8.2910	8.2451	72,012	69,612	8.7907	8.7648
05-01-06	8.2910	8.2742	38,125	34,725	8.7907	8.7768
19-01-06	8.2910	8.2910	9,795	8,345	8.7907	8.7523
02-02-06	8.2910	8.2910	13,050	11,250	8.7907	8.7843
16-02-06	Rejected	Rejected	5,800	3,500	8.7907	8.7907
02-03-06	8.2910	8.2910	6,850	6,000	8.7907	8.7808
16-03-06	8.2910	8.2910	16,300	14,200	8.7907	8.7832
30-03-06	8.2910	8.2910	38,915	36,915	8.7907	8.7897
13-04-06	8.2910	8.2910	16,050	14,650	8.7907	8.7878
27-04-06	No Bid	No Bid	600	500	8.7907	8.7907
11-05-06	8.2889	8.2889	1,200	500	8.7907	8.7907
25-05-06	8.2910	8.2910	1,500	1,000	8.7907	8.7907
08-06-06	8.4433	8.4179	28,600	25,700	8.7907	8.7863
22-06-06	8.4869	8.4869	8,300	5,500	8.7907	8.7907
<b>2006-07</b>						
06-07-06	8.4869	8.4850	31,175	29,875	8.7907	8.7903
20-07-06	8.4869	8.4869	11,336	11,336	8.7907	8.7865

Source: Exchange and Debt Management Department ,SBP

## 6.5 Auction of Pakistan Investment Bonds (PIBs)

(Million Rupees)							
AUCTION SETTLEMENT DATE	Tenure	Coupon Rate (%)	Amount Offered	Amount Accepted	Price Accepted = Rs.100	Cut-off Yield Accepted (%)	Weighted Average Yield Accepted (%)
<b>29-05-04</b>	3-Years	6.00	2,969.00	1,869.00	104.47	4.3506	4.2354
	5-Years	7.00	4,434.00	3,134.00	107.05	5.3492	5.2699
	10-Years	8.00	10,460.80	10,060.80	104.37	7.3698	7.1268
<b>09-06-04</b>	15-Years	9.00	8,410.90	3,665.90	100.01	8.9988	8.9935
	20-Years	10.00	10,536.00	3,566.00	100.05	9.9942	9.9927
<b>2004-05</b>							
<b>18-08-04</b>	3-Years	6.00	1,750.00	50.00	101.64	5.4005	5.4005
	5-Years	7.00	1,403.00	226.50	100.84	6.7990	6.3309
	10-Years	8.00	1,600.00	150.00	100.00	8.0000	7.9297
<b>12-11-04</b>	3-Years	6.00	350.00	-	-	-	-
	5-Years	7.00	800.00	150.00	101.05	6.7491	6.6994
	10-Years	8.00	875.00	50.00	100.54	7.9208	7.9208
<b>28-03-05</b>	3-Years	6.00	300.00	50.00	99.06	6.3500	6.3500
	5-Years	7.00	400.00	50.00	97.95	7.5000	7.5000
	10-Years	8.00	438.00	44.00	99.32	8.1000	8.1000
<b>19-05-06</b>	3-Years	9.10	3,896.20	3,205.20	99.10	9.4515	9.3887
	5-Years	9.30	6,526.20	4,608.14	98.57	9.6674	9.6461
	10-Years	9.60	5,590.00	3,424.05	98.28	9.8746	9.8454

Source: Exchange and Debt Management Department, SBP

## 6.6 Monthly KIBOR

			(Percent per annum)													
Period			1 Week		2 Week		1Month		3 Month		6 Month		9 Month		12 Month	
			Bid	Offer	Bid	Offer	Bid	Offer	Bid	Offer	Bid	Offer	Bid	Offer	Bid	Offer
2005	Jul.	Month Average	7.60	8.60	7.72	8.22	7.80	8.30	8.02	8.52	8.40	8.90	8.64	9.14	8.93	9.43
		End-Month	8.08	9.08	8.10	8.60	8.14	8.64	8.26	8.76	8.60	9.10	8.80	9.30	9.05	9.55
	Aug.	Month Average	7.35	8.35	7.57	8.07	7.73	8.23	8.07	8.57	8.43	8.93	8.72	9.22	9.03	9.53
		End-Month	7.42	8.42	7.53	8.03	7.65	8.15	8.04	8.54	8.37	8.87	8.69	9.19	9.04	9.54
	Sep.	Month Average	7.53	8.53	7.74	8.24	7.85	8.35	8.07	8.57	8.40	8.90	8.71	9.21	9.02	9.52
		End-Month	7.29	8.29	7.64	8.14	7.89	8.39	8.08	8.58	8.44	8.94	8.71	9.21	9.01	9.51
	Oct.	Month Average	8.04	9.04	8.15	8.65	8.18	8.68	8.30	8.80	8.53	9.03	8.75	9.25	9.06	9.56
		End-Month	8.35	9.35	8.41	8.91	8.40	8.90	8.45	8.95	8.60	9.10	8.78	9.28	9.10	9.60
	Nov.	Month Average	8.13	9.13	8.27	8.77	8.33	8.83	8.48	8.98	8.63	9.13	8.82	9.32	9.09	9.59
		End-Month	8.25	9.25	8.35	8.85	8.36	8.86	8.55	9.05	8.69	9.19	8.87	9.37	9.10	9.60
	Dec.	Month Average	7.51	8.51	7.85	8.35	8.14	8.64	8.40	8.90	8.64	9.14	8.88	9.38	9.11	9.61
		End-Month	7.39	8.39	7.70	8.20	7.92	8.42	8.26	8.76	8.55	9.05	8.85	9.35	9.08	9.58
2006	Jan.	Month Average	7.84	8.84	8.07	8.57	8.19	8.69	8.38	8.88	8.63	9.13	8.87	9.37	9.11	9.61
		End-Month	7.93	8.93	8.14	8.64	8.26	8.76	8.48	8.98	8.73	9.23	8.91	9.41	9.13	9.63
	Feb.	Month Average	7.92	8.92	8.11	8.61	8.24	8.74	8.50	9.00	8.75	9.25	8.94	9.44	9.17	9.67
		End-Month	7.97	8.97	8.09	8.59	8.21	8.71	8.58	9.08	8.89	9.39	9.05	9.55	9.28	9.78
	Mar.	Month Average	7.85	8.85	8.07	8.57	8.19	8.69	8.52	9.02	8.84	9.34	9.06	9.56	9.25	9.75
		End-Month	8.22	9.22	8.31	8.81	8.34	8.84	8.63	9.13	8.93	9.43	9.11	9.61	9.29	9.79
	Apr.	Month Average	8.46	9.46	8.54	9.04	8.55	9.05	8.73	9.23	8.98	9.48	9.17	9.67	9.35	9.85
		End-Month	8.71	9.71	8.74	9.24	8.76	9.26	8.87	9.37	9.10	9.60	9.25	9.75	9.45	9.95
	May.	Month Average	8.52	9.52	8.64	9.14	8.71	9.21	8.89	9.39	9.17	9.67	9.33	9.83	9.55	10.05
		End-Month	8.36	9.36	8.48	8.98	8.56	9.06	8.82	9.32	9.16	9.66	9.35	9.85	9.55	10.05
	Jun.	Month Average	7.93	8.93	8.21	8.71	8.37	8.87	8.76	9.26	9.18	9.68	9.40	9.90	9.58	10.08
		End-Month	7.01	8.01	7.75	8.25	8.12	8.62	8.70	9.20	9.11	9.61	9.35	9.85	9.56	10.06
	Jul.	Month Average	8.09	9.09	8.45	8.95	8.66	9.16	9.04	9.54	9.41	9.91	9.63	10.13	9.84	10.34
		End-Month	9.10	10.10	9.39	9.89	9.57	10.07	9.87	10.37	10.15	10.65	10.34	10.84	10.55	11.05

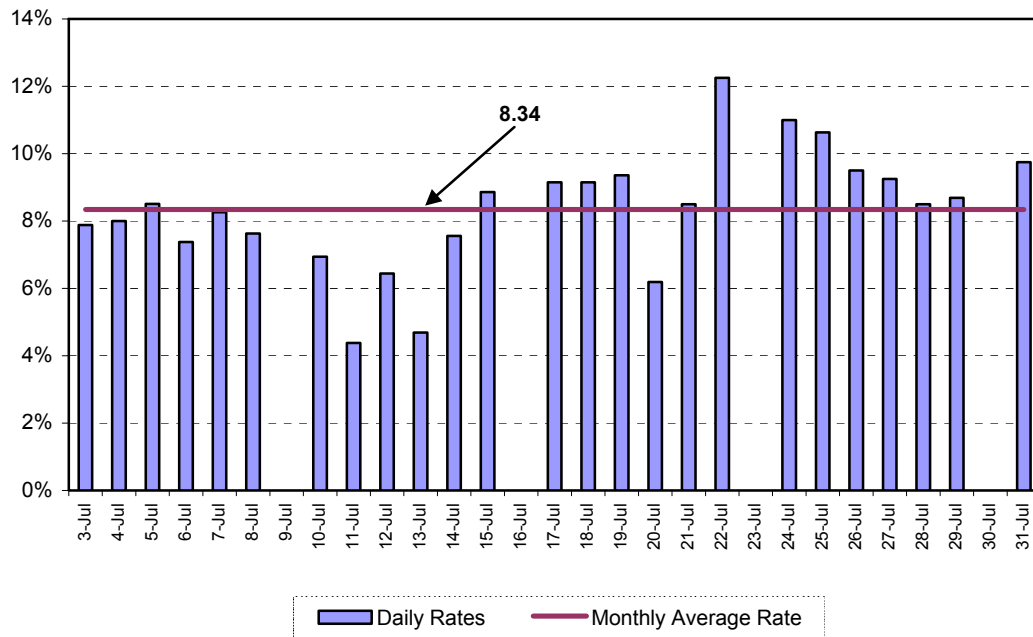
KIBOR :Karachi Interbank Offered Rate

Source: Exchange & Debt Management Department,SBP

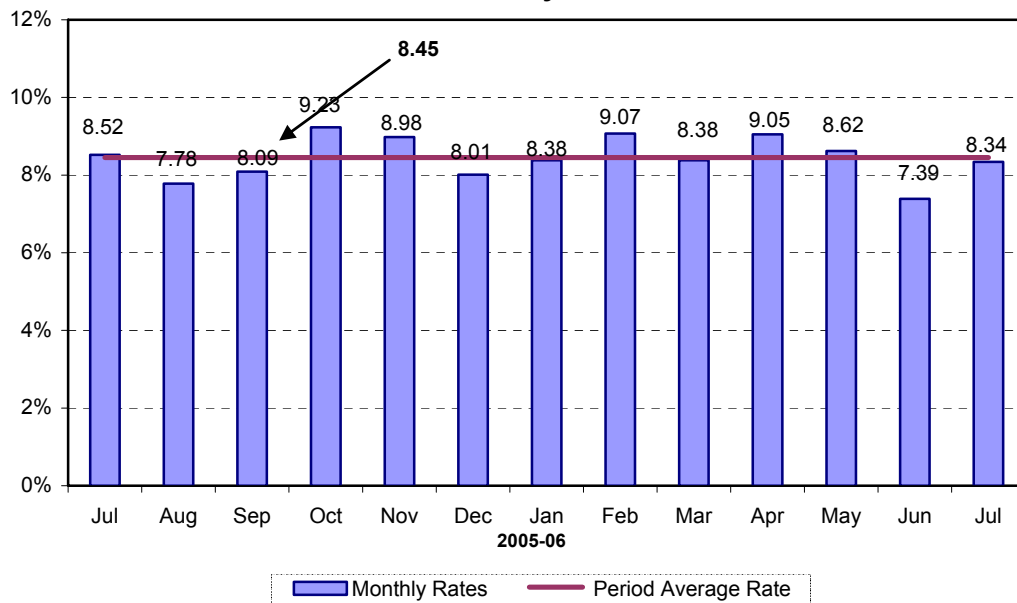


# Call Money Rate

## Daily (July 2006)



## Monthly



## 6.7 Call Money Rate

(Percent per annum)						
MONTH	2001-02	2002-03	2003-04	2004-05	2005-06	2006-07
July	6.94	5.59	0.74	1.90	8.52	8.34
August	8.30	5.32	1.40	3.03	7.78	
September	9.19	7.30	1.01	5.51	8.09	
October	10.41	7.96	2.34	3.40	9.23	
November	9.36	4.90	2.67	4.04	8.98	
December	6.09	4.61	2.43	2.79	8.01	
January	3.61	4.12	1.72	6.53	8.38	
February	5.48	2.36	2.57	2.67	9.07	
March	4.75	1.14	0.99	5.02	8.38	
April	5.66	2.71	3.38	3.95	9.05	
May	6.31	3.83	1.65	6.37	8.62	
June	4.83	0.92	1.46	6.85	7.39	
<b>Average of the period</b>	<b>6.74</b>	<b>4.23</b>	<b>1.86</b>	<b>4.34</b>	<b>8.46</b>	

Source: Daily Business Recorder

## 6.8 SBP Rates for Market to Market (M 2 M) of Major Currencies

MONTH	US Dollar			Euro			Japanese Yen			Pound Sterling		
	Ready	1Week	1Month	Ready	1Week	1Month	Ready	1Week	1Month	Ready	1Week	1 Month
03-Jul-06	60.2455	60.2728	60.3740	76.9365	77.0091	77.2729	0.5253	0.5261	0.5289	111.1499	111.2162	111.4637
04-Jul-06	60.2380	60.2648	60.3735	77.1739	77.2460	77.5154	0.5263	0.5271	0.5299	111.2325	111.2977	111.5576
05-Jul-06	60.2740	60.3003	60.4085	76.8524	76.9234	77.1857	0.5233	0.5241	0.5268	111.0006	111.0654	111.3212
06-Jul-06	60.2715	60.2993	60.4025	76.7588	76.8310	77.0872	0.5213	0.5221	0.5247	110.5831	110.6506	110.8970
07-Jul-06	60.2630	60.2910	60.3960	76.9950	77.0673	77.3278	0.5248	0.5256	0.5283	110.8719	110.9399	111.1902
08-Jul-06	60.2730	60.2998	60.4043	77.2127	77.2838	77.5445	0.5287	0.5295	0.5322	111.5714	111.6375	111.8887
10-Jul-06	60.2880	60.3108	60.4145	77.1867	77.2526	77.5220	0.5308	0.5316	0.5344	111.4665	111.5252	111.7801
11-Jul-06	60.2865	60.3080	60.4055	76.8382	76.9022	77.1571	0.5277	0.5284	0.5311	110.9995	111.0556	111.2961
12-Jul-06	60.2955	60.3165	60.4150	76.8798	76.9431	77.1943	0.5259	0.5266	0.5292	111.2211	111.2764	111.5167
13-Jul-06	60.3050	60.3203	60.4230	76.6688	76.7247	76.9799	0.5239	0.5245	0.5272	110.9461	110.9909	111.2405
14-Jul-06	60.2940	60.3165	60.4010	76.4377	76.5027	76.7331	0.5209	0.5216	0.5243	110.9711	111.0293	111.2452
15-Jul-06	60.2770	60.3055	60.3990	76.2474	76.3198	76.5610	0.5190	0.5197	0.5224	110.7952	110.8641	111.0964
17-Jul-06	60.2780	60.3106	60.4045	75.7182	75.7953	76.0452	0.5160	0.5168	0.5195	109.9049	109.9809	110.2174
18-Jul-06	60.2900	60.3228	60.4208	75.4499	75.5268	75.7764	0.5150	0.5158	0.5184	109.9418	110.0182	110.2586
19-Jul-06	60.2910	60.3225	60.4365	75.3517	75.4268	75.6913	0.5127	0.5135	0.5162	110.2542	110.3282	110.5958
20-Jul-06	60.3260	60.3470	60.4610	76.0500	76.1123	76.3781	0.5166	0.5173	0.5200	111.4402	111.4954	111.7667
21-Jul-06	60.3100	60.3500	60.4800	76.3977	76.4845	76.7712	0.5194	0.5202	0.5231	111.8539	111.9449	112.2463
22-Jul-06	60.2480	60.2933	60.4370	76.4638	76.5574	76.8615	0.5185	0.5194	0.5224	111.9649	112.0658	112.3932
24-Jul-06	60.2930	60.3361	60.4730	76.1079	76.1985	76.5019	0.5167	0.5176	0.5207	111.6054	111.7019	112.0226
25-Jul-06	60.3110	60.3513	60.4760	76.2391	76.3261	76.6098	0.5166	0.5175	0.5204	111.6085	111.6998	111.9951
26-Jul-06	60.3590	60.3955	60.5140	76.0131	76.0953	76.3656	0.5168	0.5176	0.5204	111.1058	111.1898	111.4704
27-Jul-06	60.3550	60.3888	60.5055	76.8561	76.9364	77.2053	0.5216	0.5224	0.5252	112.3146	112.3942	112.6720
28-Jul-06	60.3430	60.3773	60.4980	76.5541	76.6352	76.9080	0.5232	0.5240	0.5268	112.2108	112.2914	112.5768
29-Jul-06	60.3600	60.3965	60.5210	77.0224	77.1066	77.3844	0.5264	0.5272	0.5300	112.4718	112.5565	112.8490
31-Jul-06	60.2710	60.3145	60.4460	76.8787	76.9717	77.2735	0.5266	0.5275	0.5307	112.4356	112.5330	112.8436

## 6.8 SBP Rates for Market to Market (M 2 M) of Major Currencies

MONTH	Swiss Frank			Australian Dollar			Saudi Arabian Riyal			Kuwaiti Dinnar		
	Ready	1Week	1 Month	Ready	1Week	1 Month	Ready	1Week	1 Month	Ready	1Week	1 Month
03-Jul-06	49.1379	49.1974	49.4195	44.8437	44.8601	44.9201	16.0644	16.0734	16.1064	208.3502	208.4446	208.7838
04-Jul-06	49.2181	49.2773	49.5004	44.9285	44.9446	45.0107	16.0607	16.0687	16.1017	208.3171	208.3917	208.7207
05-Jul-06	49.0391	49.0978	49.3143	44.8710	44.8866	44.9528	16.0705	16.0778	16.1066	208.4127	208.4928	208.8272
06-Jul-06	48.9435	49.0034	49.2154	44.7305	44.7474	44.8101	16.0709	16.0789	16.1086	208.4041	208.4858	208.7993
7-Jul-06	49.0601	49.1203	49.3343	45.0677	45.0849	45.1495	16.0686	16.0767	16.1069	208.4287	208.5112	208.8635
08-Jul-06	49.2890	49.3486	49.5635	45.3223	45.3386	45.4029	16.0709	16.0787	16.1091	208.4597	208.5510	208.8958
10-Jul-06	49.2710	49.3272	49.5522	45.2612	45.2746	45.3376	16.0753	16.0820	16.1118	208.4611	208.5291	208.8480
11-Jul-06	49.0693	49.1243	49.3386	45.2842	45.2967	45.3558	16.0749	16.0813	16.1090	208.4920	208.5519	208.8457
12-Jul-06	49.0766	49.1315	49.3413	45.5261	45.5382	45.5982	16.0777	16.0842	16.1124	208.4871	208.5489	208.8497
13-Jul-06	49.0484	49.0986	49.3118	45.5062	45.5135	45.5759	16.0790	16.0841	16.1141	208.5524	208.5944	208.9026
14-Jul-06	48.9618	49.0174	49.2153	45.3531	45.3662	45.4145	16.0771	16.0842	16.1097	208.4819	208.5489	208.8013
15-Jul-06	48.8449	48.9052	49.1103	45.4157	45.4333	45.4886	16.0728	16.0811	16.1081	208.4231	208.5151	208.7800
17-Jul-06	48.4511	48.5142	48.7286	45.1995	45.2200	45.2734	16.0724	16.0820	16.1094	208.4193	208.5245	208.7882
18-Jul-06	48.2726	48.3353	48.5474	45.2205	45.2415	45.2987	16.0756	16.0854	16.1137	208.4608	208.5634	208.8698
19-Jul-06	48.0483	48.1098	48.3287	44.9982	45.0180	45.0880	16.0752	16.0847	16.1185	208.4715	208.5743	208.9457
20-Jul-06	48.4041	48.4577	48.6784	45.2475	45.2596	45.3297	16.0852	16.0919	16.1253	208.5853	208.6503	208.9907
21-Jul-06	48.6606	48.7352	48.9641	45.3923	45.4186	45.5003	16.0814	16.0931	16.1312	208.5372	208.6687	209.0961
22-Jul-06	48.7148	48.7936	49.0339	45.3457	45.3760	45.4680	16.0640	16.0771	16.1189	208.3264	208.4831	208.9583
24-Jul-06	48.3446	48.4159	48.6649	45.3253	45.3540	45.4383	16.0766	16.0892	16.1291	208.4712	208.6202	209.0647
25-Jul-06	48.4445	48.5137	48.7482	45.5680	45.5947	45.6707	16.0810	16.0928	16.1293	208.5334	208.6667	209.0497
26-Jul-06	48.2486	48.3145	48.5380	45.7642	45.7876	45.8593	16.0947	16.1055	16.1399	208.6886	208.8148	209.1956
27-Jul-06	48.7875	48.8520	49.0764	46.1142	46.1342	46.2060	16.0934	16.1034	16.1378	208.6928	208.8039	209.1553
28-Jul-06	48.7030	48.7682	49.0114	45.9602	45.9810	46.0550	16.0887	16.0987	16.1339	208.6513	208.7699	209.1583
29-Jul-06	48.9677	49.0351	49.2822	46.2810	46.3034	46.3800	16.0934	16.1042	16.1400	208.7137	208.8399	209.2415
31-Jul-06	48.8816	48.9542	49.2020	46.1857	46.2134	46.2933	16.0712	16.0838	16.1217	208.4023	208.5459	208.9460

Source: Exchange and Debt Management Department, SBP