

2.1 Pakistan Monetary Survey

(Depository Corporation Survey)

(Million Rupees)

Description	2004		2005					
	Jun.	Dec.	Apr.	May	Jun.	Jul.	Aug.	Sep.
Net Foreign Assets	629,893	631,752	701,029	656,055	687,363	664,922	632,367	634,273
Claims on non-residents	892,268	907,190	961,098	917,173	947,484	924,694	893,239	891,175
<i>Less: Liabilities to non-residents</i>	262,375	275,438	260,069	261,118	260,121	259,772	260,872	256,902
Domestic Credit	2,010,581	2,316,995	2,374,839	2,443,583	2,517,385	2,551,481	2,611,810	2,603,563
Net claims on General government ¹	621,332	650,300	633,471	681,150	713,755	732,099	783,500	722,112
Net claims on Central government	698,825	749,251	746,423	781,210	808,055	819,018	867,187	803,326
Claims on Central Govt.	828,774	888,647	874,799	968,364	998,713	999,460	1,076,718	1,022,932
<i>Less: Liabilities to Central Govt.</i>	129,949	139,396	128,376	187,154	190,658	180,442	209,531	219,606
Net claims on Provincial governments ²	(77,493)	(98,951)	(112,952)	(100,060)	(94,300)	(86,919)	(83,687)	(81,214)
Claims on Provincial Govts.	37,765	29,381	24,003	43,967	44,556	46,057	46,254	50,502
<i>Less: Liabilities to Provincial Govts.</i>	115,258	128,332	136,955	144,027	138,856	132,976	129,941	131,716
Claims on Private sectors	1,195,888	1,465,259	1,549,123	1,566,339	1,600,931	1,597,756	1,619,667	1,655,458
Claims on NFPSEs	115,787	110,457	100,749	103,506	106,431	110,942	100,008	113,272
Claims on NBFIs Depository & Non Depository	77,574	90,979	91,496	92,588	96,268	110,684	108,635	112,721
Broad Money Liabilities	2,474,647	2,725,437	2,829,120	2,861,380	2,965,174	2,948,137	2,935,148	2,956,460
Currency outside Depository Corporations (Banks)	577,019	656,478	672,201	678,581	666,414	675,757	661,765	674,355
Transferable/Demand deposits	1,597,717	1,728,576	1,804,967	1,784,532	1,845,800	1,685,181	1,667,876	1,636,401
Other deposits (Quasi-Money)	299,911	340,383	351,952	398,267	452,960	587,199	605,507	645,704
Public sector funds/deposits (SBP)	22,108	22,862	23,213	23,387	23,714	23,714	23,775	22,839
Counterpart funds	628	648	530	532	539	539	542	515
Other items (Net) ³	143,030	199,362	223,891	214,225	215,208	243,909	284,609	257,920
Other liabilities	559,008	675,946	684,042	691,853	684,454	682,124	702,293	727,489
<i>less: Other assets</i>	415,978	476,584	460,151	477,516	469,246	438,215	417,684	469,569
Memorandum items:								
Bank Clearings	1,096,181	1,269,601	1,315,110	1,300,927	1,416,613	1,297,148	1,339,545	1,447,490
Post Office Savings	54,790	53,901	49,828	50,933	50,661	47,576	45,687	43,795

Note: Pakistan Monetary Survey is the analytical accounts of State Bank of Pakistan and Scheduled banks based on monthly reporting closely in the line with MFSM. Data relates to last working day of the month.

1. General Government includes Central Government and Provincial Governments

2. Provincial Governments include Provincial Governments and Local Governments

3. *Other Liabilities* include Liabilities to scheduled banks, paid up capital and reserve accounts, Other liabilities from State bank and liabilities to State bank from scheduled banks. *Other assets* include claims on banks, other assets from State bank and claims on State bank from scheduled banks.

2.1 Pakistan Monetary Survey

(Depository Corporation Survey)

(Million Rupees)

Description	2005			2006				
	Oct.	Nov.	Dec.	Jan.	Feb.	Mar.	Apr.	May ^P
Net Foreign Assets	612,511	590,456	621,354	601,855	598,984	673,636	727,233	715,792
Claims on non-residents	869,867	847,247	877,489	860,014	859,546	929,684	984,504	973,389
<i>Less: Liabilities to non-residents</i>	257,356	256,791	256,135	258,159	260,562	256,048	257,271	257,597
Domestic Credit	2,680,061	2,778,559	2,887,520	2,907,725	2,985,767	2,898,012	2,887,047	2,984,299
Net claims on General government¹	749,579	764,665	781,182	811,744	846,885	742,079	736,872	813,921
Net claims on Central Govt.	843,287	866,394	882,427	909,317	953,501	854,187	850,698	925,848
Claims on Central Govt.	1,074,586	1,098,140	1,129,834	1,140,125	1,180,488	1,110,373	1,095,847	1,161,720
<i>Less: Liabilities to Central Govt.</i>	231,299	231,746	247,407	230,808	226,987	256,186	245,149	235,872
Net claims on Provincial governments²	(93,708)	(101,729)	(101,245)	(97,573)	(106,616)	(112,108)	(113,826)	(111,927)
Claims on Provincial Govts.	51,132	51,106	49,486	46,972	42,633	41,642	43,007	65,235
<i>Less: Liabilities to Provincial Govts.</i>	144,840	152,835	150,731	144,545	149,249	153,750	156,833	177,162
Claims on Private sectors	1,716,821	1,791,688	1,861,899	1,856,514	1,900,886	1,913,263	1,922,677	1,929,374
Claims on NFPSEs	113,088	114,566	124,893	125,317	126,815	130,918	121,164	131,045
Claims on NBFIs Depository & Non Depository	100,573	107,640	119,546	114,150	111,181	111,752	106,334	109,959
Broad Money Liabilities	2,987,576	3,054,844	3,201,675	3,174,849	3,225,272	3,243,774	3,283,897	3,344,174
Currency outside Depository Corporations (Banks)	731,519	737,010	732,011	750,748	748,975	745,485	746,851	749,307
Transferable/Demand deposits	1,607,230	1,650,220	1,742,562	1,708,597	1,722,661	1,881,134	1,897,815	1,905,870
Other deposits (Quasi-Money)	648,827	667,614	727,102	715,504	753,636	617,155	639,231	688,997
Public sector funds/deposits (SBP)	22,872	23,008	23,028	23,028	23,057	23,059	23,091	23,205
Counterpart funds	515	515	525	525	527	536	536	539
Other items (Net)³	281,510	290,547	283,549	311,082	335,803	304,137	306,610	332,090
Other liabilities	756,005	754,253	778,772	768,276	828,409	796,268	813,756	852,720
<i>less: Other assets</i>	474,495	463,706	495,223	457,194	492,606	492,131	507,146	520,630
Memorandum items:								
Bank Clearings	1,423,672	1,305,610	1,656,863	1,382,019	1,457,709	1,382,019	1,576,229	1,802,113
Post Office Savings	41,980	40,229	39,257	39,270	38,099	37,793	37,793 ^P	37,793 ^P

2.2 Analytical Accounts of State Bank of Pakistan

(Central Bank Survey)

(Million Rupees)

Description	2004		2005					
	Jun.	Dec.	Apr.	May	Jun.	Jul.	Aug.	Sep.
Net Foreign Assets	557,419	482,210	554,647	524,855	555,306	553,919	524,224	534,002
Claims on non-residents (Foreign Assets)	788,988	719,586	783,725	752,600	784,327	783,328	754,639	762,630
a) Monetary Gold Coin and Bullion	48,305	48,305	48,305	48,305	54,746	54,746	54,746	54,746
b) Holding of SDRs	13,827	14,449	14,036	13,737	13,569	13,404	13,471	13,403
c) Foreign Currency	5,515	744	715	342	767	351	128	3,454
d) Securities other than shares (Foreign)	500,312	421,873	506,135	472,708	472,514	478,099	458,595	453,759
e) Deposits	132,021	147,058	127,377	130,351	139,513	136,543	132,282	140,359
f) Loans	-	-	-	-	-	-	-	-
g) Financial Derivatives	-	-	-	-	-	-	-	-
h) Others	89,008	87,157	87,157	87,157	103,218	100,185	95,417	96,909
<i>Of which Quota - IMF</i>	88,097	86,246	86,246	86,246	90,312	93,254	93,254	93,254
Less: Liabilities to non-residents (Foreign)	231,569	237,376	229,078	227,745	229,021	229,409	230,415	228,628
a) Deposits	41,076	41,855	41,812	42,025	42,066	41,992	41,997	41,980
b) Securities other than shares (N.N.N.I.B)	105,654	94,867	89,960	82,952	90,301	87,164	87,164	85,838
c) Financial Derivatives	-	-	-	-	-	-	-	-
d) Loans (IMF Loan 1 & PRGF and SDF)	84,839	100,653	97,306	102,768	96,654	100,253	101,254	100,810
e) Other (IMF Administration Charges)	-	-	-
Claims on other Depository Corporations	196,005	207,726	213,345	213,401	210,377	206,021	180,326	201,257
a) Loans and Advances	161,888	173,609	181,751	181,807	181,987	177,631	151,936	172,867
b) Internal Bills Purchased and Discounted	116	116	116	116	116	116	116	116
c) Investment in Share Capital	34,001	34,001	31,478	31,478	28,274	28,274	28,274	28,274
Net claims on General government ¹	91,200	297,904	222,015	266,960	248,818	232,411	297,365	316,538
Net claims on Central Govt.	119,875	335,401	260,626	308,619	283,636	263,510	327,939	349,125
Claims on Central Govt.	139,698	361,645	278,349	379,252	347,862	325,240	396,684	423,186
a) Securities	134,093	355,399	272,108	372,722	332,129	318,626	390,264	416,573
b) Other Claims	5,605	6,245	6,241	6,530	15,733	6,614	6,420	6,613
Less: Liabilities to Central Government	19,823	26,244	17,723	70,633	64,226	61,730	68,745	74,061
a) Deposits	19,823	26,244	17,723	70,633	64,226	61,730	68,745	74,061
b) Other Liabilities	-	-	-	-	-	-	-	-

Note: Analytical accounts are the statistical presentation of monetary statistics of State Bank of Pakistan based on monthly reporting closely in the line with MFSM.

1. General Government includes Central Government and Provincial Governments

2.2 Analytical Accounts of State Bank of Pakistan

(Central Bank Survey)

(Million Rupees)

Description	2004		2005					
	Jun.	Dec.	Apr.	May	Jun.	Jul.	Aug.	Sep.
Net claims on Provincial governments ²	(28,675)	(37,497)	(38,611)	(41,659)	(34,818)	(31,099)	(30,574)	(32,587)
Claims on Provincial governments	5,533	7,242	9,139	8,942	10,814	11,693	12,022	12,453
a) Securities	-	-	-	-	-	-	-	-
b) Other Claims	5,533	7,242	9,139	8,942	10,814	11,693	12,022	12,453
Less: Liabilities to Provincial Govts.	34,208	44,739	47,750	50,601	45,632	42,792	42,596	45,040
a) Deposits	34,208	44,739	47,750	50,601	45,632	42,792	42,596	45,040
b) Other Liabilities	-	-	-	-	-	-	-	-
Claims on other sectors	23,387	18,774	17,323	17,328	16,927	16,927	15,427	15,415
a) Other financial corporations	23,387	18,774	17,323	17,328	16,927	16,927	15,427	15,415
1) Loans and advances to NBFIs	21,640	17,027	15,650	15,655	15,254	15,254	13,754	13,742
2) Investment in NBFIs shares	1,747	1,747	1,673	1,673	1,673	1,673	1,673	1,673
b) Other resident sectors	-	-	-	-	-	-	-	-
Monetary Base (Reserve Money)	772,869	895,963	891,565	909,934	909,013	890,840	872,095	908,701
a) Currency in circulation	577,019	656,478	672,201	678,581	666,414	675,757	661,765	674,355
b) Liabilities to other Depository Corps.	193,734	233,993	213,390	226,503	239,264	211,667	206,863	230,971
1) Reserve deposits (Banker's deposits)	156,204	196,348	175,555	183,962	196,302	174,853	166,546	191,605
2) Other liabilities (Currency in scheduled banks)	37,530	37,645	37,835	42,541	42,962	36,814	40,317	39,366
c) Deposits included in broad money (Private sector deposits)	2,116	5,492	5,974	4,850	3,335	3,416	3,467	3,375
Public sector funds/deposits	22,108	22,862	23,213	23,387	23,714	23,714	23,775	22,839
Counterpart funds	628	648	530	532	539	539	542	515
Paid up Capital and Reserve	5,515	5,515	5,515	5,515	5,515	5,515	5,515	15,514
Other items (Net) ³	66,891	81,624	87,507	83,176	92,644	88,670	115,416	119,643
Other Liabilities	97,472	115,347	124,514	131,243	120,364	112,313	149,387	157,564
Less: Other Assets	30,581	33,723	37,007	48,067	27,720	23,643	33,971	37,921
Plus: Consolidation adjustments	-	-	-	-	-	-	-	-

2. Provincial Governments includes Provincial Governments and Local Governments

3. *Other Liabilities* include Liabilities to scheduled banks, paid up capital and reserve accounts, Other liabilities from State bank and liabilities to State bank from Scheduled banks. *Other assets* include claims on banks, other assets from State bank and claims on State bank from scheduled banks.

2.2 Analytical Accounts of State Bank of Pakistan

(Central Bank Survey)

(Million Rupees)

Description	2005			2006				
	Oct.	Nov.	Dec.	Jan.	Feb.	Mar.	Apr.	May ^p
Net Foreign Assets	518,142	499,946	523,044	512,152	515,674	584,548	609,995	607,796
Claims on non-residents (Foreign Assets)	745,351	724,756	747,854	737,271	740,463	809,746	835,864	832,049
a) Monetary Gold Coin and Bullion	54,746	54,746	54,746	54,746	54,746	54,746	54,746	54,746
b) Holding of SDRs	13,384	13,092	12,915	13,047	12,937	13,010	13,286	13,426
c) Foreign Currency	4,814	2,161	3,176	3,020	2,860	2,571	3,792	2,552
d) Securities other than shares (Foreign)	429,806	409,415	414,829	435,355	441,114	456,682	536,378	543,452
e) Deposits	148,378	151,119	167,965	136,880	134,583	184,617	132,238	125,589
f) Loans	-	-	-	-	-	-	-	-
g) Financial Derivatives	-	-	-	-	-	-	-	-
h) Others	94,223	94,223	94,223	94,223	94,223	98,120	95,424	92,284
<i>Of which Quota - IMF</i>	93,254	93,254	93,254	93,254	93,254	93,254	93,254	91,315
Less: Liabilities to non-residents (Foreign)	227,209	224,810	224,810	225,119	224,789	225,198	225,869	224,253
a) Deposits	41,962	41,987	42,036	41,949	41,959	42,031	42,207	42,293
b) Securities other than shares (N.N.N.I.B)	85,553	85,553	85,268	85,125	85,125	84,983	84,698	84,697
c) Financial Derivatives	-	-	-	-	-	-	-	-
d) Loans (IMF Loan 1 & PRGF and SDF)	99,694	97,270	97,506	98,045	97,705	98,184	98,964	97,263
e) Other (IMF Administration Charges)	-	-	-	-	-	-	-	-
Claims on other Depository Corporations	206,814	209,228	214,573	212,361	211,074	213,215	218,764	219,373
a) Loans and Advances	178,424	180,838	186,183	183,971	182,684	187,348	192,897	193,506
b) Internal Bills Purchased and Discounted	116	116	116	116	116	116	116	116
c) Investment in Share Capital	28,274	28,274	28,274	28,274	28,274	25,751	25,751	25,751
Net Claims on General government ¹	339,262	400,963	390,412	395,057	422,795	312,561	291,813	332,176
Net claims on Central government	383,103	449,636	434,036	433,617	470,065	358,599	340,839	395,662
Claims on Central government	468,383	533,275	542,609	530,745	562,590	466,739	442,265	491,897
a) Securities	462,364	526,148	535,481	523,618	555,463	459,282	434,808	484,439
b) Other Claims	6,019	7,127	7,128	7,127	7,127	7,457	7,457	7,458
Less: Liabilities to Central government	85,280	83,639	108,573	97,128	92,525	108,140	101,426	96,235
a) Deposits	85,280	83,639	108,573	97,128	92,525	108,140	101,426	96,235
b) Other Liabilities	-	-	-	-	-	-	-	-

- Gold is revalued at the end of financial year (June end) on the basis of closing London Market Rate.

- SDR holdings (with IMF and SBP) are revalued on weekly basis.

- IMF related balances, IMF Account No.1, IMF Account No. 2, IMF securities account and IMF quota account, are revalued at the close of IMF financial year i.e. 30th April and also on 30th June of SBP.

2.2 Analytical Accounts of State Bank of Pakistan

(Central Bank Survey)

(Million Rupees)

Description	2005			2006				
	Oct.	Nov.	Dec.	Jan.	Feb.	Mar.	Apr.	May ^P
Net claims on Provincial governments²	(43,841)	(48,673)	(43,624)	(38,560)	(47,270)	(46,038)	(49,026)	(63,486)
Claims on Provincial governments	13,226	14,251	14,503	15,150	13,489	14,816	14,802	13,579
a) Securities	-	-	-	-	-	-	-	-
b) Other Claims	13,226	14,251	14,503	15,150	13,489	14,816	14,802	13,579
Less: Liabilities to Provincial Govts.	57,067	62,924	58,127	53,710	60,759	60,854	63,828	77,065
a) Deposits	57,067	62,924	58,127	53,710	60,759	60,854	63,828	77,065
b) Other Liabilities	-	-	-	-	-	-	-	-
Claims on other sectors	15,415	15,415	15,415	15,619	15,619	15,621	15,621	15,661
a) Other financial corporations	15,415	15,415	15,415	15,619	15,619	15,621	15,621	15,661
1) Loans and advances to NBFIs	13,742	13,742	13,742	13,946	13,946	13,948	13,948	13,988
2) Investment in NBFIs shares	1,673	1,673	1,673	1,673	1,673	1,673	1,673	1,673
b) Other resident sectors	-	-	-	-	-	-	-	-
Monetary Base (Reserve Money)	959,141	969,897	985,352	984,706	997,504	978,898	989,514	1,006,960
a) Currency in circulation	731,519	737,010	732,011	750,748	748,975	745,485	746,851	749,307
b) Liabilities to other Depository Corps.	224,187	229,436	250,014	231,035	245,200	229,943	238,960	253,858
1) Reserve deposits (Banker's deposits)	178,774	185,050	207,750	184,549	198,627	185,692	197,523	206,358
2) Other liabilities (Currency in scheduled banks)	45,413	44,386	42,264	46,486	46,573	44,251	41,437	47,500
c) Deposits included in broad money (Private sector deposits)	3,435	3,451	3,327	2,923	3,329	3,470	3,703	3,795
Public sector funds/deposits	22,872	23,008	23,028	23,028	23,057	23,059	23,091	23,205
Counterpart funds	515	515	525	525	527	536	536	539
Paid up Capital and Reserve	15,514	15,514	15,514	15,514	15,514	15,514	15,514	15,514
Other items (Net)³	81,588	116,615	119,024	111,414	128,557	107,941	107,539	128,789
Other Liabilities	129,736	146,355	152,376	157,402	174,348	165,735	162,000	179,556
Less: Other Assets	48,148	29,740	33,352	45,988	45,791	57,794	54,461	50,767
Plus: Consolidation adjustments	-	-	-	-	-	-	-	-

Revaluation Procedure:

- Gold is revalued at the end of financial year (June end) on the basis of closing London Market Rate.
- SDR holdings (with IMF and SBP) are revalued on weekly basis.
- IMF related balances, IMF Account No.1, IMF Account No. 2, IMF securities account and IMF quota account, are revalued at the close of IMF financial year i.e. 30th April and also 30th June of SBP.

2.3 Analytical Accounts of Scheduled Banks (Other Depository Corporations Survey)

(Million Rupees)

Description	2004		2005					
	Jun.	Dec.	Apr.	May	Jun.	Jul.	Aug.	Sep.
Net Foreign Assets	72,474	149,542	146,382	131,200	132,057	111,003	108,143	100,271
Claims on non-residents (Foreign Assets)	103,280	187,604	177,373	164,573	163,157	141,366	138,600	128,545
a) Foreign currency	4,960	6,362	5,523	6,574	6,806	6,598	6,678	6,697
b) Deposits	40,101	122,165	107,647	93,347	88,742	67,794	52,615	57,767
c) Securities other than shares ¹	58,219	59,077	64,203	64,652	67,609	66,974	79,307	64,081
d) Loans	-	-	-	-	-	-	-	-
e) Financial derivatives	-	-	-	-	-	-	-	-
f) Other	-	-	-	-	-	-	-	-
Less: Liabilities to non-residents	30,806	38,062	30,991	33,373	31,100	30,363	30,457	28,274
a) Deposits	21,602	23,982	23,563	26,944	24,777	25,003	23,694	22,571
b) Securities other than shares	-	-	-	-	-	-	-	-
c) Financial derivatives	-	-	-	-	-	-	-	-
d) Loans	9,204	14,080	7,428	6,429	6,323	5,360	6,763	5,703
e) Other	-	-	-	-	-	-	-	-
Claims on central bank	189,393	235,135	209,799	216,048	231,150	208,552	203,477	230,392
a) Currency	37,263	37,645	37,835	42,541	42,962	36,814	40,317	38,846
b) Reserve deposits	152,130	197,490	171,964	173,507	188,188	171,738	163,160	191,546
c) Other Claims	-	-	-	-	-	-	-	-
Net claims on General Government ²	530,132	352,396	411,456	414,190	464,937	499,688	486,135	405,574
Net claims on Central Govt.	578,950	413,850	485,797	472,591	524,419	555,508	539,248	454,201
Claims on Central Govt.	689,076	527,002	596,450	589,112	650,851	674,220	680,034	599,746
a) Securities	670,536	490,793	553,829	541,727	600,743	636,107	643,824	565,915
b) Other claims	18,540	36,209	42,621	47,385	50,108	38,113	36,210	33,831
Less: Liabilities to Central Govt.	110,126	113,152	110,653	116,521	126,432	118,712	140,786	145,545
a) Deposits	110,126	113,152	110,653	116,521	126,432	118,712	140,786	145,545
b) Other Liabilities	-	-	-	-	-	-	-	-
Net claims on provincial governments ³	(48,818)	(61,454)	(74,341)	(58,401)	(59,482)	(55,820)	(53,113)	(48,627)
Claims on provincial governments	32,232	22,139	14,864	35,025	33,742	34,364	34,232	38,049
a) Securities	80	92	80	87	80	80	80	80
b) Other claims	32,152	22,047	14,784	34,938	33,662	34,284	34,152	37,969
Less: Liabilities to prov. governments	81,050	83,593	89,205	93,426	93,224	90,184	87,345	86,676
a) Deposits	81,050	83,593	89,205	93,426	93,224	90,184	87,345	86,676
b) Other liabilities	-	-	-	-	-	-	-	-

Note: Analytical accounts are the statistical presentation of monetary statistics of Scheduled Banks based on monthly reporting closely in the line with MFSM.

1. Including Non-residents Securities

2. General Government includes Central Government and Provincial Governments

3. Provincial Governments includes Provincial Governments and Local Governments

2.3 Analytical Accounts of Scheduled Banks

(Other Depository Corporations Survey)

(Million Rupees)

Description	2004		2005					
	Jun.	Dec.	Apr.	May	Jun.	Jul.	Aug.	Sep.
Claims on other sectors	1,365,862	1,647,921	1,724,045	1,745,105	1,786,703	1,802,455	1,812,883	1,866,036
a) Other financial corporations	54,187	72,205	74,173	75,260	79,341	93,757	93,208	97,306
b) Public non financial corporations	115,787	110,457	100,749	103,506	106,431	110,942	100,008	113,272
c) Other non financial corporations	514,963	619,349	643,758	530,373	646,467	742,936	649,871	613,472
d) Other resident sectors	680,925	845,910	905,365	1,035,966	954,464	854,820	969,796	1,041,986
Liabilities to Central Bank	163,350	176,890	188,882	188,786	189,678	185,389	157,438	179,321
Deposits included in broad money	1,895,512	2,063,467	2,150,945	2,177,949	2,295,425	2,268,964	2,269,916	2,278,730
Transferable deposits (Demand deposits)	1,595,601	1,723,084	1,798,993	1,779,682	1,842,465	1,681,765	1,664,409	1,633,026
a) Other financial corporations	16,896	20,977	19,602	17,440	16,276	20,764	15,992	16,139
b) Public non financial corporations	119,825	137,688	146,540	120,631	124,015	112,650	115,663	110,727
c) Other non financial corporations	-	553,987	566,473	571,243	593,068	564,400	548,952	534,818
d) Other resident sectors	1,458,880	1,010,432	1,066,378	1,070,368	1,109,106	983,951	983,802	971,342
Other deposits /Time deposits	299,911	340,383	351,952	398,267	452,960	587,199	605,507	645,704
a) Other financial corporations	5,101	6,083	6,052	5,677	7,617	6,785	6,056	8,746
b) Public non financial corporations	70,876	63,026	62,956	91,765	93,133	98,232	115,009	142,912
c) Other non financial corporations	-	90,721	94,928	100,953	109,393	108,966	105,551	124,580
d) Other resident sectors	223,934	180,553	188,016	199,872	242,817	373,216	378,891	369,466
Deposits Excluded from broad money	26,153	23,027	16,520	16,384	29,906	19,488	20,273	16,612
Loans	30,883	30,190	28,484	26,542	24,878	25,945	39,897	32,119
Of which: Other financial corporations	1,408	680	650	650	672	679	679	679
Financial Derivatives	-	-	-	-	-	-	-	-
Central Govt. Lending Fund	9,486	9,314	9,314	9,314	9,314	9,314	9,314	9,314
Shares and Other equity	140,640	167,127	200,566	192,835	201,521	202,284	202,995	208,167
a) Funds contributed by owners	80,149	84,836	92,797	94,716	98,086	98,252	98,653	98,654
b) Retained earnings	(14,872)	2,298	8,345	1,671	4,655	6,720	5,698	7,836
c) General & Special Reserves	62,479	66,463	87,066	85,193	85,548	86,470	86,780	87,306
d) Valuation adjustment	12,884	13,530	12,358	11,255	13,232	10,842	11,864	14,371
Other items (net)	(108,224)	(85,457)	(103,143)	(105,381)	(135,985)	(89,790)	(89,299)	(122,092)
Other liabilities	725,409	681,538	670,945	709,603	762,030	771,424	808,978	776,421
Less: Other Assets	833,633	766,995	774,088	814,984	898,015	861,214	898,277	898,513
Plus Consolidation adjustment	-	-	-	-	-	-	-	-

Other Liabilities include Liabilities to scheduled banks, paid up capital and reserve accounts, Other liabilities from State bank and liabilities to State bank from Scheduled banks. *Other assets* include Claims on banks, Other assets from State bank and Claims on State bank from scheduled banks

2.3 Analytical Accounts of Scheduled Banks

(Other Depository Corporations Survey)

(Million Rupees)

Description	2005				2006			
	Oct.	Nov.	Dec.	Jan.	Feb.	Mar.	Apr.	May ^P
Net Foreign Assets	94,369	90,510	98,310	89,703	83,310	89,088	117,238	107,996
Claims on non-residents (Foreign Assets)	124,516	122,491	129,635	122,743	119,083	119,938	148,640	141,340
a) Foreign currency	6,912	7,605	7,350	8,573	8,565	7,050	7,284	6,218
b) Deposits	51,936	49,062	56,170	48,140	42,763	44,476	70,394	59,808
c) Securities other than shares ¹	65,668	65,824	66,115	66,030	67,755	68,412	70,962	75,314
d) Loans	-	-	-	-	-	-	-	-
e) Financial derivatives	-	-	-	-	-	-	-	-
f) Other	-	-	-	-	-	-	-	-
Less: Liabilities to non-residents	30,147	31,981	31,325	33,040	35,773	30,850	31,402	33,344
a) Deposits	24,525	24,734	27,366	26,466	26,660	23,886	24,427	25,626
b) Securities other than shares	-	-	-	-	-	-	-	-
c) Financial derivatives	-	-	-	-	-	-	-	-
d) Loans	5,622	7,247	3,959	6,574	9,113	6,964	6,975	7,718
e) Other	-	-	-	-	-	-	-	-
Claims on central bank	219,534	224,678	247,298	227,357	235,742	221,129	233,921	250,490
a) Currency	45,413	44,386	42,265	46,486	46,573	44,251	41,437	47,500
b) Reserve deposits	174,121	180,292	205,033	180,871	189,169	176,878	192,484	202,990
c) Other Claims	-	-	-	-	-	-	-	-
Net claims on General government ²	410,317	363,702	390,770	416,687	424,090	429,518	445,059	481,745
Net claims on Central government	460,184	416,758	448,391	475,700	483,436	495,588	509,859	530,186
Claims on Central government	606,203	564,865	587,225	609,380	617,898	643,634	653,582	669,823
a) Securities	572,570	531,501	551,012	573,219	589,418	617,113	623,882	625,862
b) Other claims	33,633	33,364	36,213	36,161	28,480	26,521	29,700	43,961
Less: Liabilities to Central government	146,019	148,107	138,834	133,680	134,462	148,046	143,723	139,637
a) Deposits	146,019	148,107	138,834	133,680	134,462	148,046	143,723	139,637
b) Other Liabilities	-	-	-	-	-	-	-	-
Net Claims on Provincial governments ³	(49,867)	(53,056)	(57,621)	(59,013)	(59,346)	(66,070)	(64,800)	(48,441)
Claims on Provincial governments	37,906	36,855	34,983	31,822	29,144	26,826	28,205	51,656
a) Securities	78	78	79	79	78	77	76	76
b) Other claims	37,828	36,777	34,904	31,743	29,066	26,749	28,129	51,580
Less: Liabilities to Prov. governments	87,773	89,911	92,604	90,835	88,490	92,896	93,005	100,097
a) Deposits	87,773	89,911	92,604	90,835	88,490	92,896	93,005	100,097
b) Other liabilities	-	-	-	-	-	-	-	-

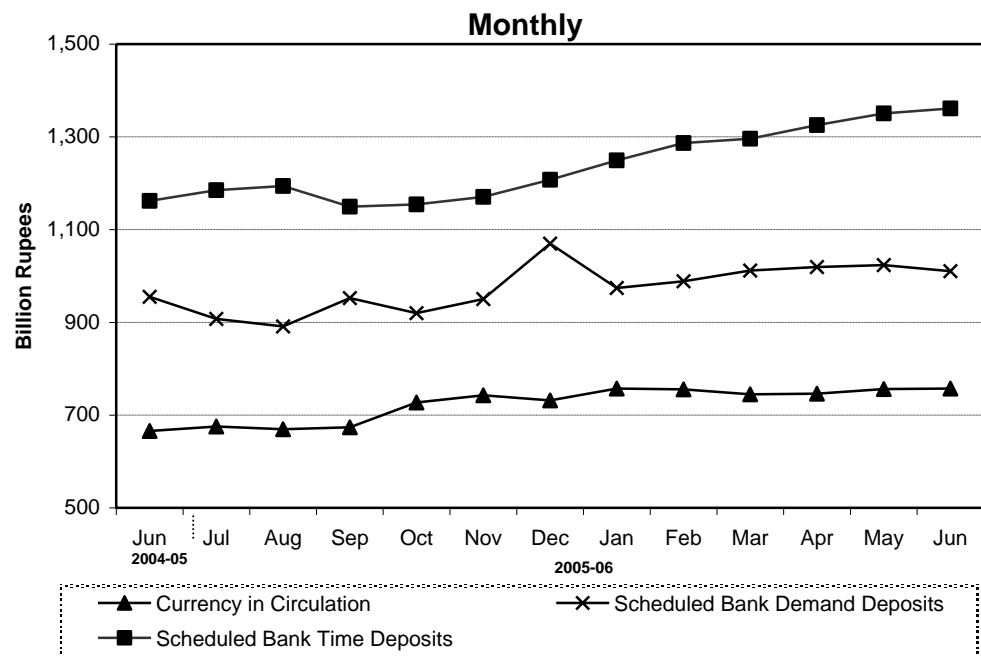
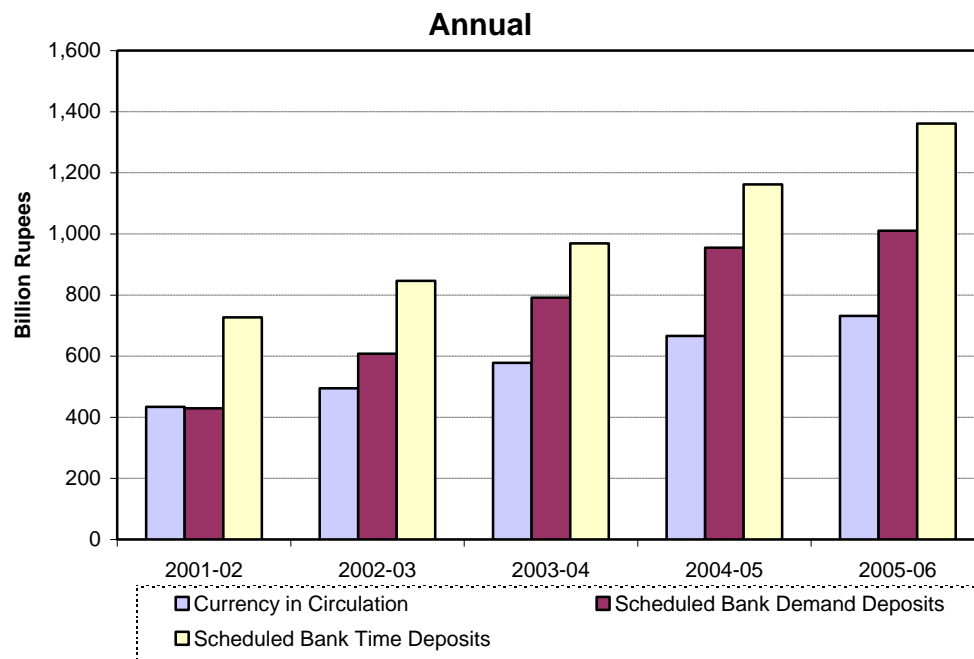
2.3 Analytical Accounts of Scheduled Banks

(Other Depository Corporations Survey)

(Million Rupees)

Description	2005				2006			
	Oct.	Nov.	Dec.	Jan.	Feb.	Mar.	Apr.	May ^P
Claims on other sectors	1,915,067	1,998,479	2,090,923	2,080,362	2,123,263	2,140,312	2,134,554	2,154,717
a) Other financial corporations	85,158	92,225	104,131	98,531	95,562	96,131	90,713	94,298
b) Public non financial corporations	113,088	114,566	124,893	125,317	126,815	130,918	121,164	131,045
c) Other non financial corporations	686,143	724,848	753,767	761,870	792,615	801,946	805,972	800,111
d) Other resident sectors	1,030,678	1,066,840	1,108,132	1,094,644	1,108,271	1,111,317	1,116,705	1,129,263
Liabilities to Central Bank	183,588	187,459	192,709	190,826	185,800	195,693	200,413	201,534
Deposits included in broad money	2,252,622	2,314,383	2,466,337	2,421,178	2,472,968	2,494,819	2,533,343	2,591,072
Transferable deposits (Demand deposits)	1,603,795	1,646,769	1,739,235	1,705,674	1,719,332	1,877,664	1,894,112	1,902,075
a) Other financial corporations	12,907	15,711	31,460	34,105	40,015	36,906	38,254	30,372
b) Public non financial corporations	111,490	109,977	122,578	117,322	100,662	115,153	114,682	116,664
c) Other non financial corporations	529,108	599,684	563,885	557,367	566,371	558,492	557,292	570,052
d) Other resident sectors	950,290	921,397	1,021,312	996,880	1,012,284	1,167,113	1,183,884	1,184,987
Other deposits /Time deposits	648,827	667,614	727,102	715,504	753,636	617,155	639,231	688,997
a) Other financial corporations	10,661	8,089	13,913	10,292	9,341	10,999	12,640	13,748
b) Public non financial corporations	148,332	150,385	148,919	148,145	155,069	137,416	141,486	136,216
c) Other non financial corporations	115,906	125,457	150,033	136,179	140,781	161,781	157,396	180,112
d) Other resident sectors	373,928	383,683	414,237	420,888	448,445	306,959	327,709	358,921
Deposits Excluded from broad money	19,612	28,237	49,022	33,208	33,941	40,178	33,009	33,259
Loans	30,436	34,170	47,878	38,684	117,042	142,945	126,315	141,570
<i>Of which: other financial corporations</i>	1,371	796	1,540	790	1,430	978	1,297	2,616
Financial Derivatives	-	-	-	-	-	-	-	-
Central Govt. Lending Fund	9,314	9,314	9,314	9,314	9,315	9,314	9,314	9,314
Shares and Other equity	206,955	210,597	225,803	258,247	259,593	237,804	246,669	245,230
a) Funds contributed by owners	99,423	100,330	106,250	106,033	106,311	111,314	113,867	118,490
b) Retained earnings	4,320	4,215	11,896	41,911	36,559	33,587	35,526	31,855
c) General & Special Reserves	88,579	88,069	88,150	87,525	93,511	92,947	98,113	95,745
d) Valuation adjustment	14,633	17,983	19,507	22,778	23,212	(44)	(837)	(860)
Other items (net)	(63,336)	(106,889)	(163,858)	(137,442)	(212,343)	(240,851)	(218,438)	(227,115)
Other liabilities	798,938	836,073	835,862	621,928	655,131	629,087	658,955	706,106
<i>Less: Other Assets</i>	862,274	942,962	999,720	759,370	867,474	869,938	877,393	933,221
<i>Plus Consolidation adjustment</i>	-	-	-	-	-	-	-	-

Monetary Statistics



2.4 Monetary Statistics

(Million Rupees)												
Last Saturday/ Last working day	Currency in Circulation	Other Deposits with SBP ^δ	Currency in tills of Scheduled Banks	Banks’ Deposits with SBP	Reserve Money (M ₀) (1+2+3+4)	Scheduled Banks’ Demand Deposits [#]	Narrow Money (M ₁) (1+2+6)	Scheduled Banks’ Time Deposits [#]	Resident Foreign Currency Deposits	Broad Money (M ₂) (7+8+9)	Money Multi- plier (10/5)	
		1	2	3	4	5	6	7	8	9	10	11
2001	Jun.	375,465	11,292	19,178	127,266	533,201	374,675	761,432	610,458	154,154	1,526,044	2.86
	Dec.	429,360	11,132	22,466	125,719	588,677	414,793	855,285	651,542	143,298	1,650,125	2.80
2002	Jun.	433,816	13,847	26,414	110,522	584,599	429,175	876,838	727,076	157,456	1,761,370	3.01
	Dec.	487,746	2,127	25,510	125,152	640,534	513,007	1,002,880	779,877	130,658	1,913,415	2.99
2003	Jun.	494,577	3,499	30,415	140,990	669,481	608,170	1,106,246	846,321	126,138	2,078,705	3.10
	Dec.	567,517	3,495	30,273	145,224	746,510	698,321	1,269,335	861,809	135,019	2,266,162	3.04
2004	Jun.	578,116	2,116	36,432	156,204	772,868	791,413	1,371,645	969,217	145,694	2,486,556	3.22
	Dec.	655,283	5,499	38,836	196,348	895,966	881,046	1,541,828	1,016,729	172,493	2,731,049	3.05
2005	Jun.	665,901	3,335	43,472	196,302	909,010	954,998	1,624,235	1,161,823	180,295	2,966,352	3.26
	Dec.	731,749	3,327	42,527	207,750	985,352	1,069,604	1,804,679	1,207,666	189,525	3,201,870	3.25
2006	Jun. *	757,112	4,927	43,124	219,298	1,024,461	1,010,300	1,772,339	1,361,270	195,501	3,329,110	3.25
2005	Jun.	665,901	3,335	43,472	196,302	909,010	954,998	1,624,235	1,161,823	180,295	2,966,352	3.26
	Jul.	675,328	3,414	37,244	174,853	890,839	907,396	1,586,138	1,185,013	179,711	2,950,863	3.31
	Aug.	669,708	3,314	37,481	190,381	900,884	891,280	1,564,302	1,194,018	178,605	2,936,925	3.26
	Sep.	673,719	3,375	40,003	191,605	908,702	952,278	1,629,372	1,149,466	177,145	2,955,983	3.25
	Oct.	727,280	3,412	43,398	186,920	961,010	919,843	1,650,536	1,154,250	179,584	2,984,369	3.11
	Nov.	742,909	3,449	40,880	183,563	970,801	950,267	1,696,625	1,170,484	183,019	3,050,128	3.14
	Dec.	731,749	3,327	42,527	207,750	985,352	1,069,604	1,804,679	1,207,666	189,525	3,201,870	3.25
	Jan.	757,182	2,904	42,766	199,533	1,002,387	974,251	1,734,338	1,249,426	194,191	3,177,955	3.17
2006	Feb.	755,451	3,386	41,824	195,541	996,202	988,613	1,747,450	1,286,333	190,033	3,223,817	3.24
	Mar.	744,810	3,566	44,927	185,692	978,995	1,011,644	1,760,020	1,296,092	188,389	3,244,501	3.31
	Apr.	746,197	3,799	42,092	197,523	989,612	1,019,240	1,769,236	1,325,360	192,567	3,287,162	3.32
	May	756,191	3,889	42,842	198,059	1,000,981	1,023,326	1,783,405	1,350,540	190,190	3,324,135	3.32
	Jun. *	757,112	4,927	43,124	219,298	1,024,461	1,010,300	1,772,339	1,361,270	195,501	3,329,110	3.25

^δ Excluding IMF A/c Nos. 1 & 2, SAF loan account, counterpart funds, deposits of foreign central banks, foreign governments, international organizations and deposit money banks

[#] Excluding inter-bank deposits and deposits of central & provincial governments and foreign constituents

* As on 24th June 2006.

Note : The quarter end data relate to last working day whereas monthly data relate to last Saturday of the month

2.5 Analysis of Causative Factors for Changes in Monetary Statistics

(Million Rupees)						
	2002-03			2003-04		
	Jul.-Dec.	Jan.-Jun.	Total	Jul.-Dec.	Jan.-Jun.	Total
1. Public Sector	(55,104)	(23,257)	(78,361)	(30,255)	88,361	58,106
i) Budgetary support	(34,018)	(21,934)	(55,952)	(9,721)	73,420	63,699
ii) Commodity operations	(21,042)	(5,553)	(26,595)	(21,248)	13,074	(8,174)
iii) Effect of Zakat fund etc.	(44)	4,230	4,186	714	1,867	2,581
2. Credit to Non-Government Sector (A+B+C)	68,452	80,086	148,538	151,313	164,095	315,408
(A) Credit to private Sector	81,023	86,700	167,723	180,522	144,693	325,215
i) Commercial Banks	77,190	86,050	163,240	186,629	146,829	333,458
ii) Specialized Banks	3,833	650	4,483	(6,107)	(2,136)	(8,243)
(B) Credit to Public Sector Enterprise (PSEs)	(7,453)	(4,132)	(11,586)	(24,908)	21,991	(2,917)
i) Autonomous Bodies	(2,099)	(2,691)	(4,789)	(16,168)	(4,909)	(21,077)
ii) Others	(2,489)	(688)	(3,177)	(8,227)	29,693	21,466
iii) PSEs Special Account-Debt Replacement with SBP	(2,866)	(753)	(3,620)	(513)	(2,793)	(3,306)
(C) Other Financial Institutions (SBP Credit to NBFIs)	(5,118)	(2,482)	(7,600)	(4,301)	(2,589)	(6,891)
3. Counterpart Funds	(26)	(24)	(50)	(21)	21	0
4. Other Items (net)	(26,843)	(34,831)	(61,674)	18,151	(27,339)	(9,188)
5. Domestic Credit Expansion (+) / Contraction (-) (1+2+3+4)	(13,521)	21,974	8,453	139,187	225,138	364,326
6. Foreign Assets (net)	165,567	143,379	308,946	48,272	(4,746)	43,526
7. Monetary Expansion ((5+6)	152,046	165,353	317,399	187,459	220,393	407,852

	2005						
	Jun.	Jul.	Aug..	Sep.	Oct.	Nov	Dec.
1. Public Sector	50,486	9,304	27,110	(25,892)	29,211	21,353	7,845
i) Budgetary support(net)	48,839	21,156	29,869	(26,564)	30,473	22,474	7,474
ii) Commodity operations	1,541	(11,576)	(2,685)	474	(457)	(1,272)	393
iii) Effect of Zakat fund etc.	106	(277)	(74)	199	(805)	151	(22)
2. Credit to Non-Government Sector (A+B+C)	63,195	7,109	3,191	64,251	38,734	69,342	111,520
A) Credit to private Sector	63,649	4,461	3,776	69,371	42,035	66,130	111,877
i) Commercial Banks	63,503	14,446	(5,503)	68,594	41,514	66,310	110,503
ii) Specialized Banks	146	(9,985)	9,279	777	521	(180)	1,374
B) Credit to Public Sector Enterprise (PSEs)	(58)	2,647	915	(5,108)	(3,302)	3,212	(357)
i) Autonomous Bodies	(118)	(375)	173	291	(3,387)	3,458	(2,800)
ii) Others	387	3,022	803	(6,336)	119	(111)	2,464
iii) PSEs Special Account-Debt Replacement with SBP	(327)	0	(61)	937	(33)	(136)	(20)
C) Other Financial Institutions (SBP Credit to NBFIs)	(396)	0	(1,500)	(12)	0	0	0
3. Counterpart Funds	(7)	0	(2)	26	0	(2)	(7)
4. Other Items (net)	(16,023)	(20,610)	(17,290)	(4,315)	(21,272)	(5,770)	8,355
5. Domestic Credit Expansion (+) / Contraction (-) (1+2+3+4)	97,650	(4,197)	13,008	34,070	46,672	84,922	127,713
6. Foreign Assets (net)	4,272	(11,290)	(26,948)	(15,012)	(18,286)	(19,162)	24,029
7. Monetary Expansion (+) / Contraction (-) (5+6)	101,922	(15,488)	(13,940)	19,058	28,386	65,759	151,742

Note The composition of autonomous bodies has changed over the years. At present, WAPDA, OGDC, KESC, PTCL, PIA, and Pak. Steel are included in the autonomous bodies.

2.5 Analysis of Causative Factors for Changes in Monetary Statistics

(Million Rupees)

	2004-05			2005-06		
	Jul.-Dec.	Jan.-Jun.	Total	Jul.-Dec.	Jan.-Jun.	Total
1. Public Sector	30,549	65,237	95,785	68,930	5,397	74,327
i) Budgetary support	25,421	46,375	71,796	84,881	(27,642)	57,239
ii) Commodity operations	3,797	18,166	21,963	(15,123)	32,192	17,069
iii) Effect of Zakat fund etc.	1,331	695	2,026	(829)	846	17
2. Credit to Non-Government Sector (A+B+C)	268,907	149,792	418,699	294,145	60,842	354,987
A) Credit to private Sector	284,703	153,144	437,848	297,651	54,699	352,350
i) Commercial Banks	284,581	152,149	436,731	295,864	73,319	369,183
ii) Specialized Banks	122	995	1,117	1,787	(18,622)	(16,835)
B) Credit to Public Sector Enterprise (PSEs)	(11,183)	(1,506)	(12,689)	(1,994)	5,672	3,678
i) Autonomous Bodies	(1,543)	(526)	(2,069)	(2,641)	3,798	1,157
ii) Others	(8,886)	(128)	(9,014)	(38)	2,068	2,068
iii) PSEs Special Account-Debt Replacement with SBP	(754)	(852)	(1,606)	686	(196)	490
(C) Other Financial Institutions (SBP Credit to NBFIs)	(4,613)	(1,847)	(6,460)	(1,512)	473	(1,039)
3. Counterpart Funds	(21)	109	88	15	(13)	2
4. Other Items (net)	(58,244)	(30,281)	(88,525)	(60,902)	(47,043)	(107,945)
5. Domestic Credit Expansion (+) / Contraction (-) (1+2+3+4)	241,191	184,857	426,048	302,188	19,183	321,371
6. Foreign Assets (net)	3,302	50,446	53,748	(66,669)	108,059	41,390
7. Monetary Expansion (5+6)	244,492	235,303	479,796	235,517	127,240	362,757

	2006					
	Jan.	Feb.	Mar.	Apr.	May	Jun. *
1. Public Sector	22,499	26,876	(90,503)	(7,748)	49,541	4,732
i) Budgetary support	26,104	37,791	(87,543)	(11,376)	13,125	(5,743)
ii) Commodity operations	(3,101)	(10,970)	(3,843)	3,358	36,448	10,300
iii) Effect of Zakat fund etc.	(504)	54	883	270	(32)	175
2. Credit to Non-Government Sector (A+B+C)	(21,560)	38,219	35,193	555	(2,312)	10,747
A) Credit to private Sector	(23,660)	36,664	33,540	1,127	(1,881)	8,909
i) Commercial Banks	(22,627)	37,462	46,308	9,320	(5,247)	8,103
ii) Specialized Banks	(1,033)	(798)	(12,768)	(8,193)	3,365	805
B) Credit to Public Sector Enterprise (PSEs)	1,897	1,555	1,651	(572)	(470)	1,611
i) Autonomous Bodies	3,336	1,476	1,183	330	(1,250)	(1,277)
ii) Others	(1,439)	107	469	(870)	893	2,908
iii) PSEs Special Account-Debt Replacement with SBP	0	(29)	(1)	(32)	(114)	(20)
(C) Other Financial Institutions (SBP Credit to NBFIs)	204	0	2	0	40	227
3. Counterpart Funds	0	(2)	(9)	0	(2)	0
4. Other Items (net)	(14,256)	(15,539)	10,631	(4,451)	(11,131)	(12,297)
5. Domestic Credit Expansion (+) / Contraction (-) (1+2+3+4)	(13,316)	49,553	(44,688)	(11,644)	36,096	3,182
6. Foreign Assets (net)	(10,599)	(3,690)	65,373	54,306	877	1,792
7. Monetary Expansion (+) /Contraction (-) (5+6)	(23,915)	45,862	20,684	42,662	36,973	4,974

* As on 24th June 2006.

2.6 Liabilities and Assets of the State Bank of Pakistan Issue Department

(Million Rupees)

		LIABILITIES			ASSETS				
				Total	Gold and Foreign Assets			Total	Rupee
Last Saturday/ Last working day		Notes held in the Banking Department	Notes in Circulation		(1) Gold Coins and Bullion	(2) Approved Foreign Exchange	(3) India Notes		
2001	Jun.	177.6	392,936.5	393,114.1	35,617.7	111,027.2	580.7	147,225.5	1,726.7
	Dec.	171.5	457,545.7	457,717.3	35,617.7	128,576.9	580.7	164,775.3	1,729.9
2002	Jun.	126.6	458,247.9	458,374.5	39,378.2	245,300.3	528.6	285,207.2	1,738.0
	Dec.	168.9	511,118.2	511,287.1	39,378.2	398,620.2	528.6	438,527.1	1,950.7
2003	Jun.	214.2	522,676.9	522,891.1	41,246.5	459,116.6	535.2	500,898.3	2,351.1
	Dec.	125.8	595,159.2	595,285.0	41,257.0	514,517.5	535.2	556,309.6	2,434.6
2004	Jun.	160.8	611,742.9	611,903.7	47,532.1	514,138.8	543.8	562,214.7	2,799.2
	Dec.	126.0	690,946.2	691,072.2	47,532.1	434,236.5	543.8	482,312.4	3,067.7
2005	Jun.	145.6	705,720.1	705,865.7	53,870.0	484,308.3	593.0	538,771.3	2,961.2
	Dec.	156.6	769,617.5	769,774.1	53,870.0	426,373.5	593.0	480,836.5	2,469.6
2006	Jun.	126.4	795,364.1	795,490.5	53,870.0	559,934.4	593.0	614,397.4	2,586.0
2005	Jun.	145.6	705,720.1	705,865.7	53,870.0	484,308.3	593.0	538,771.3	2,961.2
	Jul.	146.9	708,590.2	708,737.1	53,870.0	489,750.4	593.0	544,213.4	2,632.6
	Aug.	129.5	703,015.4	703,144.9	53,870.0	470,215.6	593.0	524,678.6	2,440.4
	Sep.	158.7	708,623.0	708,781.7	53,870.0	462,027.8	593.0	516,490.8	2,277.2
	Oct.	240.4	766,179.6	766,420.0	53,870.0	442,409.7	593.0	496,872.7	2,115.5
	Nov.	143.5	779,173.3	779,316.8	53,870.0	424,373.1	593.0	478,836.1	2,512.4
	Dec.	156.6	769,617.5	769,774.1	53,870.0	426,373.5	593.0	480,836.5	2,469.6
2006	Jan.	183.8	795,237.1	795,420.9	53,870.0	448,161.0	593.0	502,624.0	2,416.4
	Feb.	157.5	792,536.7	792,694.1	53,870.0	436,839.9	593.0	491,302.9	2,389.6
	Mar.	102.2	794,592.7	794,694.9	53,870.0	437,608.5	593.0	492,071.5	2,690.4
	Apr.	173.4	783,483.5	783,656.8	53,870.0	548,304.1	593.0	602,767.1	2,652.3
	May	130.7	794,210.4	794,341.0	53,870.0	559,218.8	593.0	613,681.8	2,636.5
	Jun.	126.4	795,364.1	795,490.5	53,870.0	559,934.4	593.0	614,397.4	2,586.0

(1) Gold is valued at end financial year (June) on the basis of closing London Market Rate.

(2) Approved Foreign Exchanges includes SDR held with IMF w.e.f June2004

(3) Receivable from Reserve Bank of India.

2.6 Liabilities and Assets of the State Bank of Pakistan Issue Department

(Million Rupees)

Last Saturday/ Last working day		A S S E T S							
		Domestic Assets			With Reserve Bank of India pending transfer to Pakistan				
		Internal Bills of Exchange & other Commercial Papers			Gold Coins and Bullion		Sterling Securities		Govt. of India Securities
		Govt. of Pakistan Securities	Rupee Coin	Total	Govt. of India Securities		Ruppee Coin		Total
2001	Jun.	243,187.2	78.5	244,992.4	581.5	297.1	13.6	4.0	896.2
	Dec.	290,237.4	78.5	292,045.8	581.5	297.1	13.6	4.0	896.2
2002	Jun.	170,389.5	78.5	172,206.0	642.1	303.2	12.4	3.7	961.3
	Dec.	69,769.6	78.5	71,798.8	642.1	303.2	12.4	3.7	961.3
2003	Jun.	18,558.7	78.5	20,988.3	671.7	316.5	12.6	3.7	1,004.5
	Dec.	35,457.8	78.5	37,970.9	671.7	316.5	12.6	3.7	1,004.5
2004	Jun.	45,671.5	78.5	48,549.2	773.1	350.1	12.8	3.8	1,139.8
	Dec.	204,473.9	78.5	207,620.1	773.1	350.1	12.8	3.8	1,139.8
2005	Jun.	162,802.6	78.5	165,842.3	876.2	357.8	13.9	4.1	1,252.0
	Dec.	285,137.5	78.5	287,685.7	876.2	357.8	13.9	4.1	1,252.0
2006	Jun.	177,176.6	78.5	179,841.1	876.2	357.8	13.9	4.1	1,252.0
2005	Jun.	162,802.6	78.5	165,842.3	876.2	357.8	13.9	4.1	1,252.0
	Jul.	160,560.6	78.5	163,271.7	876.2	357.8	13.9	4.1	1,252.0
	Aug.	174,695.5	78.5	177,214.4	876.2	357.8	13.9	4.1	1,252.0
	Sep.	188,683.2	78.5	191,039.0	876.2	357.8	13.9	4.1	1,252.0
	Oct.	266,101.3	78.5	268,295.3	876.2	357.8	13.9	4.1	1,252.0
	Nov.	296,637.9	78.5	299,228.7	876.2	357.8	13.9	4.1	1,252.0
2006	Dec.	285,137.5	78.5	287,685.7	876.2	357.8	13.9	4.1	1,252.0
	Jan.	289,050.1	78.5	291,545.0	876.2	357.8	13.9	4.1	1,252.0
	Feb.	297,671.2	78.5	300,139.3	876.2	357.8	13.9	4.1	1,252.0
	Mar.	298,602.5	78.5	301,371.4	876.2	357.8	13.9	4.1	1,252.0
	Apr.	176,907.0	78.5	179,637.8	876.2	357.8	13.9	4.1	1,252.0
	May	176,692.3	78.5	179,407.3	876.2	357.8	13.9	4.1	1,252.0
2006	Jun.	177,176.6	78.5	179,841.1	876.2	357.8	13.9	4.1	1,252.0

2.7 Liabilities and Assets of the State Bank of Pakistan Banking Department

		(Million Rupees)											
		L I A B I L I T I E S								D e p o s i t s			
Last Saturday/ Last working day		Capital	Reserve	Rural	Industrial	Export	Loans	Housing			Banks	Others	Total
		Paid-up	Fund	Credit Fund	Credit Fund	Credit Fund	Guar- antee Fund	Credit Fund	Federal Govt.	Provincial Govts.			
2001	Jun.	100.0	8,400.0	2,600.0	1,600.0	1,500.0	900.0	4,700.0	7,031.4	18,318.6	127,265.6	473,263.1	625,878.7
	Dec.	100.0	8,400.0	2,600.0	1,600.0	1,500.0	900.0	4,700.0	8,981.3	12,255.2	141,580.1	290,776.2	453,592.7
2002	Jun.	100.0	5,400.0	2,600.0	1,600.0	1,500.0	900.0	4,700.0	16,032.7	27,073.8	110,522.1	284,048.2	437,676.9
	Dec.	100.0	5,400.0	2,600.0	1,600.0	1,500.0	900.0	4,700.0	57,236.1	24,906.5	125,151.8	272,112.1	479,406.5
2003	Jun.	100.0	5,414.5	2,600.0	1,600.0	1,500.0	900.0	4,700.0	36,841.9	32,836.0	140,989.7	285,682.1	496,349.7
	Dec.	100.0	5,414.5	2,600.0	1,600.0	1,500.0	900.0	4,700.0	23,879.4	30,664.6	145,224.3	282,551.3	482,319.6
2004	Jun.	100.0	5,414.5	2,600.0	1,600.0	1,500.0	900.0	4,700.0	2,681.5	34,207.5	156,204.2	273,562.7	466,655.8
	Dec.	100.0	5,414.5	2,600.0	1,600.0	1,500.0	900.0	4,700.0	2,272.7	44,738.5	196,347.7	290,348.5	533,707.4
2005	Jun.	100.0	5,414.5	2,600.0	1,600.0	1,500.0	900.0	4,700.0	47,286.1	45,632.0	196,302.3	273,550.2	562,770.6
	Dec.	100.0	15,414.5	2,600.0	1,600.0	1,500.0	900.0	4,700.0	86,850.0	58,127.1	207,749.7	273,412.8	626,139.6
2006	Jun.	100.0	15,414.5	2,600.0	1,600.0	1,500.0	900.0	4,700.0	70,228.5	58,158.1	219,297.8	272,359.1	620,043.5
2005	Jun.	100.0	5,414.5	2,600.0	1,600.0	1,500.0	900.0	4,700.0	47,286.1	45,632.0	196,302.3	273,550.2	562,770.6
	Jul.	100.0	5,414.5	2,600.0	1,600.0	1,500.0	900.0	4,700.0	44,791.9	42,792.3	174,852.9	274,016.4	536,453.5
	Aug.	100.0	5,414.5	2,600.0	1,600.0	1,500.0	900.0	4,700.0	52,103.4	29,850.3	190,380.6	274,967.8	547,302.1
	Sep.	100.0	15,414.5	2,600.0	1,600.0	1,500.0	900.0	4,700.0	52,493.9	29,033.3	176,188.7	278,784.5	536,500.3
	Oct.	100.0	15,414.5	2,600.0	1,600.0	1,500.0	900.0	4,700.0	75,218.7	39,562.1	186,920.1	275,731.6	577,432.6
	Nov.	100.0	15,414.5	2,600.0	1,600.0	1,500.0	900.0	4,700.0	62,195.2	49,574.3	183,562.7	273,547.5	568,879.7
	Dec.	100.0	15,414.5	2,600.0	1,600.0	1,500.0	900.0	4,700.0	86,850.0	58,127.1	207,749.7	273,412.8	626,139.6
	Jan.	100.0	15,414.5	2,600.0	1,600.0	1,500.0	900.0	4,700.0	83,977.7	39,312.0	199,533.4	273,054.9	595,878.0
	Feb.	100.0	15,414.5	2,600.0	1,600.0	1,500.0	900.0	4,700.0	83,577.4	34,503.6	195,541.2	272,849.3	586,471.5
	Mar.	100.0	15,414.5	2,600.0	1,600.0	1,500.0	900.0	4,700.0	77,375.5	41,206.7	205,965.9	273,274.8	597,823.0
2006	Apr.	100.0	15,414.5	2,600.0	1,600.0	1,500.0	900.0	4,700.0	80,353.4	63,827.8	197,523.3	274,271.3	615,975.8
	May	100.0	15,414.5	2,600.0	1,600.0	1,500.0	900.0	4,700.0	76,583.3	50,727.4	198,059.5	274,866.7	600,236.9
	Jun.	100.0	15,414.5	2,600.0	1,600.0	1,500.0	900.0	4,700.0	70,228.5	58,158.1	219,297.8	272,359.1	620,043.5

2.7 Liabilities and Assets of the State Bank of Pakistan Banking Department

(Million Rupees)

Last Saturday/ Last working day		LIABILITIES					A S S E T S									
		Allocation of Special Drawing Rights		Bills Payable	Re- valuation Accounts	Other Liabi- lities	Total Liabilities/ Assets	Notes and Coins #	Bills Purchased and Discounted							Govt. Treasury Bills
									Internal							
									Agri- cultural Sector	Indu- strial Sector	Export Sector	Housing Sector	Others	Total		
2001	Jun. Dec.	1,526.0 1,526.0	434.2 105.3	33,261.2 33,261.2	91,409.5 97,486.6	772,309.7 605,771.8	177.6 171.6	- -	- -	3.6 3.6	- -	33.4 33.4	37.0 37.0	3,241.9 3,241.9		
2002	Jun. Dec.	1,526.0 1,526.0	323.3 190.7	37,033.3 37,033.3	57,967.6 40,647.9	551,327.0 575,604.5	126.7 168.9	- -	- -	3.6 3.6	- -	33.4 33.4	37.0 37.0	10,064.0 22,650.0		
2003	Jun. Dec.	1,526.0 1,526.0	671.9 143.0	38,883.2 38,883.2	35,628.3 33,967.6	589,873.6 573,653.9	214.3 125.8	- -	- -	3.6 3.6	- -	33.4 33.4	37.0 37.0	- -		
2004	Jun. Dec.	1,526.0 1,526.0	494.4 251.0	45,205.6 45,205.6	38,946.0 57,064.6	569,642.3 654,569.0	160.8 126.0	- -	- -	3.6 3.6	- -	33.4 33.4	37.0 37.0	- -		
2005	Jun. Dec.	1,526.0 1,526.0	1,099.7 118.5	51,646.6 51,646.6	54,792.1 87,784.8	688,649.3 794,029.9	145.6 156.6	- -	- -	3.6 3.6	- -	33.4 33.4	37.0 37.0	- -		
2006	Jun.	1,526.0	225.4	51,646.6	146,859.2	847,115.1	126.4	-	-	3.6	-	33.4	37.0	-		
2005	Jun. Jul. Aug. Sep.	1,526.0 1,526.0 1,526.0 1,526.0	1,099.7 217.1 178.1 121.7	51,646.6 51,646.6 51,646.6 51,646.6	54,792.1 47,622.6 81,752.5 66,388.0	688,649.3 654,280.2 699,219.7 682,997.1	145.6 147.0 129.5 158.7	- - - -	- - - -	3.6 3.6 3.6 3.6	- - - -	33.4 33.4 33.4 33.4	37.0 37.0 37.0 37.0	- - - -		
	Oct. Nov. Dec.	1,526.0 1,526.0 1,526.0	189.5 178.5 118.5	51,646.6 51,646.6 51,646.6	61,683.9 85,880.3 87,784.8	719,293.0 734,925.2 794,029.9	240.4 143.5 156.6	- - -	- - -	3.6 3.6 3.6	- - -	33.4 33.4 33.4	37.0 37.0 37.0	- - -		
2006	Jan. Feb. Mar. Apr. May Jun.	1,526.0 1,526.0 1,526.0 1,526.0 1,526.0 1,526.0	215.6 284.8 208.1 211.1 137.2 225.4	51,646.6 51,646.6 51,646.6 51,646.6 51,646.6 51,646.6	76,244.0 109,116.1 99,477.8 97,316.1 108,342.4 146,859.2	752,324.7 775,859.6 777,495.9 793,490.0 788,703.4 847,115.1	183.8 157.5 102.2 173.4 130.7 126.4	- - - - - -	- - - - - -	3.6 3.6 3.6 3.6 3.6 3.6	- - - - - -	33.4 33.4 33.4 33.4 33.4 33.4	37.0 37.0 37.0 37.0 37.0 37.0	- - - - - -		

Includes one rupee coins, one rupee notes and subsidiary coins

(Contd.)

2.7 Liabilities and Assets of the State Bank of Pakistan Banking Department

(Million Rupees)

		A S S E T S									
Last Saturday/ Last working day		Balance held outside Pakistan	SDR held with IMF	Govt. Debtor Balances	Loans and Advances to Govts.	Loans and Advances to Scheduled Banks					Total (a)
						Agri- cultural Sector	Indus- trial Sector	Export Sector	Housing Sector	Others	
2001	Jun.	21,934.2	281.4	982.4	-	54,607.1	4,242.4	75,472.2	66.9	15,674.5	150,063.0
	Dec.	90,552.4	237.4	940.3	-	53,777.4	3,828.6	50,212.4	66.9	29,006.9	136,892.2
2002	Jun.	42,454.3	509.6	618.7	-	55,163.8	3,415.1	59,547.8	66.9	25,408.2	143,601.8
	Dec.	71,916.8	123.9	-	-	54,137.6	3,021.3	45,859.8	66.9	18,074.3	121,160.0
2003	Jun.	104,384.6	14,092.1	-	-	55,686.8	2,800.3	56,780.4	66.9	15,214.1	130,548.5
	Dec.	104,834.5	14,136.1	319.3	-	55,353.1	2,563.9	77,303.2	66.9	13,992.6	149,279.7
2004	Jun.	132,021.4	-	5,533.1	-	58,005.3	2,328.8	88,292.3	66.9	13,194.5	161,887.8
	Dec.	147,057.8	2,284.8	7,241.5	-	60,737.4	1,169.4	102,522.5	-	9,179.9	173,609.2
2005	Jun.	139,513.0	1,774.6	10,814.0	-	59,753.3	1,498.5	109,446.9	-	11,288.6	181,987.3
	Dec.	167,964.8	1,370.3	14,503.1	-	63,627.6	3,066.9	106,386.3	-	13,102.5	186,183.4
2006	Jun.	123,578.6	1,295.6	16,485.0	-	62,194.0	6,971.5	109,346.9	-	16,102.5	194,614.8
2005	Jun.	139,513.3	1,774.6	10,814.0	-	59,753.3	1,498.5	109,446.9	-	11,288.6	181,987.3
	Jul.	136,542.7	1,753.0	11,692.9	-	58,225.3	1,536.9	106,580.1	-	11,288.6	177,630.8
	Aug.	138,276.2	1,686.5	15,259.2	-	60,225.3	1,607.5	94,632.5	-	11,288.6	167,753.9
	Sep.	141,300.3	1,685.4	15,952.2	-	60,224.1	1,659.6	98,992.8	-	11,100.6	171,977.1
	Oct.	149,839.1	1,675.5	14,789.5	-	60,714.1	1,847.0	102,426.4	-	13,100.6	178,088.1
	Nov.	144,768.2	1,580.6	15,111.3	-	60,714.1	2,100.0	103,543.9	-	13,100.6	179,459.0
	Dec.	167,964.8	1,370.3	14,503.1	-	63,627.6	3,066.9	106,386.3	-	13,102.5	186,183.4
	2006	Jan.	140,336.0	1,389.5	16,389.4	-	60,708.1	3,696.7	105,890.1	-	13,102.5
2006	Feb.	147,660.6	1,321.1	15,564.5	-	60,707.9	4,912.6	102,600.6	-	13,102.5	181,323.5
	Mar.	147,811.2	1,323.0	16,470.6	-	61,700.9	5,413.7	106,093.7	-	13,102.5	186,310.9
	Apr.	132,237.9	1,359.8	14,802.1	-	61,650.9	6,113.7	109,030.1	-	16,102.5	192,897.2
	May	120,549.9	1,314.4	15,724.8	-	61,644.0	6,337.3	108,990.0	-	16,102.5	193,073.7
	Jun.	123,578.6	1,295.6	16,485.0	-	62,194.0	6,971.5	109,346.9	-	16,102.5	194,614.8

2.7 Liabilities and Assets of the State Bank of Pakistan Banking Department

(Concl'd.)
(Million Rupees)

Last Saturday/ Last working day		A S S E T S										
		Loans and Advances to Non-Bank				Other		I n v e s t m e n t s				
		Financial Institutions				Loans						
		Indus- trial Sector	Housing Sector	Others	Total (b)	And Advances (a+b)	Sche- duled Banks	Non-Bank Financial Institutions	Govt. Securities	Others	Total	Other Assets
2001	Jun.	7,897.1	16,496.3	25,816.8	50,210.2	200,273.2	47,727.7	1,989.5	372,382.9	361.5	422,461.6	122,920.4
	Dec.	7,702.3	16,496.6	13,896.6	38,095.2	174,987.4	47,727.7	2,739.5	134,783.5	242.1	185,492.8	150,111.1
2002	Jun.	6,268.2	15,257.3	13,455.0	34,980.5	178,582.3	52,086.6	2,739.5	148,060.8	768.5	203,655.3	115,279.0
	Dec.	6,152.3	15,257.3	8,537.5	29,947.1	151,107.1	39,326.5	2,497.1	111,276.8	926.1	154,026.5	175,574.4
2003	Jun.	5,191.0	14,157.3	8,037.5	27,385.8	157,934.3	38,954.7	2,497.1	91,753.6	907.6	134,112.9	179,098.3
	Dec.	4,440.4	13,857.3	4,786.7	23,084.4	172,364.1	38,954.7	2,497.1	36,747.5	907.6	79,106.9	202,730.2
2004	Jun.	4,418.0	12,607.3	4,219.8	21,245.1	183,132.9	34,000.8	1,747.1	87,524.9	1,291.2	124,564.0	124,193.1
	Dec.	608.1	12,607.3	3,416.7	16,632.1	190,241.3	34,000.8	1,747.1	149,989.0	1,331.2	187,068.1	120,512.6
2005	Jun.	595.0	11,242.8	3,416.7	15,254.0	197,241.3	28,273.8	1,673.4	168,392.0	933.5	199,272.6	139,850.8
	Dec.	358.3	11,242.3	2,141.7	13,742.3	199,925.7	28,273.8	1,673.4	249,452.0	890.9	280,290.1	129,782.4
2006	Jun.	831.7	11,242.3	2,141.7	14,215.7	208,830.5	25,751.5	1,673.4	316,110.5	919.9	344,455.3	152,306.6
2005	Jun.	595.0	11,242.3	3,416.7	15,254.0	197,241.3	28,273.8	1,673.4	168,392.0	933.5	199,272.6	139,850.8
	Jul.	595.0	11,242.3	3,416.7	15,254.0	192,884.8	28,273.8	1,673.4	157,131.8	933.5	188,012.4	123,210.3
	Aug.	370.0	11,242.3	2,141.7	13,754.0	181,507.9	28,273.8	1,673.4	205,741.9	891.9	236,581.0	125,742.5
	Sep.	370.0	11,242.3	2,141.7	13,754.0	185,731.1	28,273.8	1,673.4	170,243.6	891.9	201,082.7	137,049.8
	Oct.	358.3	11,242.3	2,141.7	13,742.3	191,830.4	28,273.8	1,673.4	189,197.2	933.5	220,077.9	140,803.4
	Nov.	358.3	11,242.3	2,141.7	13,742.3	193,201.3	28,273.8	1,673.4	222,733.0	933.5	253,613.7	126,469.9
	Dec.	358.3	11,242.3	2,141.7	13,742.3	199,925.7	28,273.8	1,673.4	249,452.0	890.9	280,290.1	129,782.4
	Jan.	561.9	11,242.3	2,141.7	13,945.9	197,343.3	28,273.8	1,673.4	225,263.9	933.5	256,144.6	140,501.1
	Feb.	561.9	11,242.3	2,141.7	13,945.9	195,269.4	28,273.8	1,673.4	243,622.7	933.5	274,503.4	141,346.2
	Mar.	564.3	11,242.3	2,141.7	13,948.4	200,259.3	25,751.5	1,673.4	238,644.2	933.5	267,002.6	144,490.1
2006	Apr.	564.3	11,242.3	2,141.7	13,948.4	206,845.6	25,751.5	1,673.4	256,981.2	919.9	285,326.0	152,708.3
	May	603.3	11,242.3	2,141.7	13,988.4	207,062.1	25,751.5	1,673.4	259,554.7	919.9	287,899.5	155,985.2
	Jun.	831.7	11,242.3	2,141.7	14,215.7	208,830.5	25,751.5	1,673.4	316,110.5	919.9	344,455.3	152,306.6

2.8 Scheduled Bank's Consolidated Position

Based on weekly position Liabilities & Assets (All Banks)

(Million Rupees)

Last Saturday/ Last working day		Capital (Paid-up) and Reserves	DEMAND LIABILITIES IN PAKISTAN					TIME LIABILITIES IN PAKISTAN				
			Inter-Bank		Others			Inter-Bank		Others		
			Borrow- ings	Deposits	Deposits (General)	Others	Total	Borrow- ings	Deposits	Deposits (General)	Others	Total
2000	Jun.	79,648	43	8,537	475,281	47,420	531,281	5,674	626	652,279	10,759	669,338
	Dec.	78,399	40	10,019	482,128	45,485	537,672	4,942	1,434	674,187	8,741	689,304
2001	Jun.	88,581	34	12,248	527,672	42,870	582,824	3,668	1,037	712,978	9,494	727,177
	Dec.	93,969	21	9,781	549,393	44,731	603,926	2,979	1,591	748,101	9,740	762,411
2002	Jun.	85,886	10	13,251	609,657	47,333	670,251	659	1,445	803,749	12,808	818,661
	Dec.	91,210	2	10,293	662,263	68,095	740,653	915	4,713	853,250	16,830	875,708
2003	Jun.	112,230	1	9,936	785,333	53,352	848,622	621	3,370	903,153	16,020	923,164
	Dec.	108,962	1	11,771	886,895	62,776	961,443	2,573	2,051	918,141	16,872	939,637
2004	Jun.	131,225	15	20,740	1,014,947	56,532	1,092,234	1,878	2,928	1,026,919	20,703	1,052,428
	Dec.	160,644	27	18,680	1,124,763	61,914	1,205,384	1,082	3,655	1,079,464	24,853	1,109,054
2005	Jun.	190,652	99	22,894	1,211,674	70,107	1,304,774	1,024	9,732	1,231,745	27,288	1,269,789
2004	Jun.	131,225	15	20,740	1,014,947	56,532	1,092,234	1,878	2,928	1,026,919	20,703	1,052,428
	Jul.	125,988	15	10,333	1,033,788	55,215	1,099,351	1,784	4,689	1,017,808	20,924	1,045,205
	Aug.	143,152	21	9,009	1,029,154	55,351	1,093,535	1,761	5,494	1,030,830	22,814	1,060,899
	Sep.	146,756	21	9,200	1,034,796	55,984	1,100,001	2,008	2,930	1,038,510	23,960	1,067,408
	Oct.	151,749	634	11,544	1,046,072	58,400	1,116,650	1,252	2,651	1,018,650	26,362	1,048,915
	Nov.	152,250	27	10,565	1,047,137	56,665	1,114,394	1,780	2,349	1,045,379	24,509	1,074,017
	Dec.	160,644	27	18,680	1,124,763	61,914	1,205,384	1,082	3,655	1,079,464	24,853	1,109,054
2005	Jan.	162,814	42	13,010	1,091,933	59,720	1,164,705	1,057	5,755	1,063,362	24,109	1,094,283
	Feb.	175,045	192	11,565	1,129,538	60,393	1,201,688	1,057	6,948	1,079,012	24,100	1,111,117
	Mar.	177,015	42	11,535	1,169,700	65,469	1,246,746	1,338	8,747	1,103,382	19,310	1,132,777
	Apr.	184,926	87	11,201	1,147,864	61,630	1,220,782	3,212	8,327	1,142,154	25,820	1,179,513
	May	174,433	87	11,807	1,158,310	64,863	1,235,067	3,107	6,729	1,161,737	26,210	1,197,783
	Jun.	190,652	99	22,894	1,211,674	70,107	1,304,774	1,024	9,732	1,231,745	27,288	1,269,789

2.8 Scheduled Bank's Consolidated Position

Based on weekly position Liabilities & Assets (All Banks)

(Million Rupees)

							STATUTORY RESERVES ^δ			
Last Saturday/ Last working day		Total Demand and Time Liabilities (a)	Borrowings from State Bank of Pakistan	Borrowings from Banks Abroad	Money at Call and Short Notice in Pakistan	Other Liabilities	Total Liabilities	On Demand Liabilities	On Time Liabilities	Total (b)
2000	Jun.	1,200,619	141,016	22,907	42,469	319,914	1,806,573	28,688	33,467	62,155
	Dec.	1,226,976	144,758	35,798	30,885	384,297	1,901,113	28,428	34,465	62,893
2001	Jun.	1,310,001	139,367	15,169	30,293	400,517	1,983,928	30,656	36,359	67,015
	Dec.	1,366,337	119,490	16,387	40,202	499,795	2,136,180	32,206	38,121	70,327
2002	Jun.	1,488,912	135,556	12,642	31,877	546,159	2,301,032	35,106	40,933	76,039
	Dec.	1,616,361	136,900	14,690	26,257	650,077	2,535,495	38,346	43,785	82,131
2003	Jun.	1,771,786	137,882	21,243	28,551	468,312	2,540,004	43,859	46,158	90,017
	Dec.	1,901,080	153,259	21,470	19,655	516,538	2,720,964	49,055	46,982	96,037
2004	Jun.	2,144,662	162,335	9,872	27,479	527,452	3,003,025	55,986	52,621	108,607
	Dec.	2,314,438	176,354	14,248	28,912	580,366	3,274,962	61,715	55,453	117,168
2005	Jun.	2,574,563	185,068	6,245	22,243	645,616	3,624,387	66,351	63,489	129,840
2004	Jun.	2,144,662	162,335	9,872	27,479	527,452	3,003,025	55,986	52,621	108,607
	Jul.	2,144,556	159,568	3,736	30,395	543,204	3,007,447	56,487	52,260	108,747
	Aug.	2,154,434	152,699	7,095	37,484	566,131	3,060,995	56,551	530,45	109,596
	Sep.	2,167,409	163,924	8,405	31,868	564,053	3,082,415	56,593	53,370	109,963
	Oct.	2,165,565	169,058	11,317	35,095	575,352	3,108,136	57,587	52,446	110,033
	Nov.	2,188,411	170,340	6,073	32,571	573,785	3,123,430	57,348	53,701	111,049
	Dec.	2,314,438	176,354	14,248	28,912	580,366	3,274,962	61,715	55,453	117,168
2005	Jan.	2,258,988	175,682	5,786	30,336	577,668	3,211,274	59,752	54,714	114,466
	Feb.	2,312,805	175,563	5,674	32,505	598,978	3,300,570	61,710	55,556	117,266
	Mar.	2,379,523	179,138	7,693	31,988	608,926	3,384,283	63,937	56,639	120,576
	Apr.	2,400,295	188,433	5,993	25,313	617,621	3,422,581	62,305	58,976	121,281
	May	2,432,850	188,201	5,983	23,631	629,508	3,454,606	59,889	62,935	122,824
	Jun.	2,574,563	185,068	6,245	22,243	645,616	3,624,387	66,351	63,489	129,840

^δ The Statutory Reserves requirements stood at 5% of Demand and Time Liabilities up to 6th Oct. 2000, thereafter at 7% up to 14th Dec. 2000 and again at 5% w.e.f. 15-12-2000.

(Contd.)

2.8 Scheduled Bank's Consolidated Position

Based on weekly position Liabilities & Assets (All Banks)

(Million Rupees)

Last Saturday/ Last working day		BALANCES			Money at Call & Short Notice in (c + d + e + f)	FOREIGN CURRENCY				ADVANCES			
		Cash in Pakistan (c)	With SBP (d)	Others (e)		Pakistan (f)	as % of (a)	Held in Pakistan	with Banks Abroad	Total	To Banks	To Others	Total (i) Discounted & (ii)
2000	Jun.	19,468	153,371	18,250	43,509	19.5	2,222	46,619	48,841	5,788	801,154	806,942	69,554
	Dec.	20,196	68,418	19,351	32,222	11.4	3,594	54,901	58,495	4,841	869,336	874,177	71,089
2001	Jun.	19,178	147,962	18,033	31,179	16.5	4,788	70,856	75,644	3,657	866,490	870,147	75,504
	Dec.	21,225	157,132	19,301	42,659	17.6	4,200	76,184	80,384	3,490	894,602	898,092	73,776
2002	Jun.	26,414	124,883	27,268	32,831	14.2	5,003	89,416	94,419	1,626	894,524	896,150	75,588
	Dec.	25,510	125,351	27,390	27,291	12.7	5,435	56,272	61,707	715	942,238	942,953	73,463
2003	Jun.	30,415	140,077	31,306	28,686	13.0	5,435	68,578	74,013	253	988,572	988,825	80,687
	Dec.	30,273	145,475	29,129	22,729	12.1	8,214	51,097	59,311	197	1,110,553	1,110,750	86,364
2004	Jun.	36,432	151,406	36,762	30,444	11.9	4,806	60,976	65,782	63	1,258,022	1,258,085	99,924
	Dec.	38,836	194,949	39,987	29,636	13.1	6,341	146,708	153,049	130	1,525,213	1,525,343	104,002
2005	Jun.	43,462	188,092	49,021	22,166	11.8	6,777	116,627	123,404	190	1,680,491	1,680,681	120,480
2004	Jun.	36,432	151,406	36,762	30,444	11.9	4,806	60,976	65,782	63	1,258,022	1,258,085	99,924
	Jul.	32,929	166,428	26,850	33,379	12.1	5,136	77,176	82,312	65	1,250,323	1,250,388	96,767
	Aug.	32,349	170,936	26,995	39,888	12.5	4,998	93,424	98,422	66	1,268,288	1,268,354	96,567
	Sep.	35,005	187,963	26,904	34,041	13.1	5,007	99,127	104,134	69	1,314,261	1,314,330	101,746
	Oct.	37,040	159,031	27,626	35,846	12.0	5,195	124,045	129,240	68	1,371,404	1,371,472	102,013
	Nov.	36,744	166,054	26,176	33,220	12.0	6,710	132,171	138,881	223	1,414,350	1,414,573	101,159
	Dec.	38,836	194,949	39,987	29,636	13.1	6,341	146,708	153,049	130	1,525,213	1,525,343	104,002
2005	Jan.	38,802	173,345	29,226	30,581	12.0	7,764	131,762	139,526	77	1,534,011	1,534,088	103,491
	Feb.	35,678	173,434	30,953	32,794	11.8	7,659	132,037	139,696	164	1,548,889	1,549,053	108,004
	Mar.	43,914	171,635	32,544	31,471	11.7	6,384	127,079	133,463	135	1,594,874	1,595,009	116,036
	Apr.	38,291	171,913	32,378	24,836	11.1	5,487	133,269	138,756	161	1,604,839	1,605,000	115,973
	May	37,254	179,456	34,826	23,791	11.3	6,342	125,906	132,248	175	1,636,208	1,636,383	115,866
	Jun.	43,462	188,092	49,021	22,166	11.8	6,777	116,627	123,404	190	1,680,491	1,680,681	120,480

2.8 Scheduled Bank's Consolidated Position *

Based on weekly position Liabilities & Assets (All Banks)

(Conclld.)

(Million Rupees)

		BANK CREDIT		INVESTMENT IN SECURITIES & SHARES										
Last Saturday/ Last working day		Total (i) + (ii) (g)	(g) as % of (a)	Federal Govt. Securities	Provincia Govts. Securities	Treasury Bills	Others	Total (h)	as % of (a)	Others Assets	Advance Tax Paid	Fixed Assets	Total Assets	Excess Reserves (d) - (b)
2000 Jun.		876,496	73.0	115,536	1,730	103,790	65,993	287,049	23.9	257,054	72,941	29,594	1,806,573	91,216
Dec.		945,266	77.0	117,127	1,836	135,711	65,377	320,051	26.1	331,575	75,239	30,300	1,901,113	5,525
2001 Jun.		945,651	72.2	101,161	1,836	123,889	70,048	296,934	22.7	340,220	78,205	30,922	1,983,928	80,947
Dec.		971,868	71.1	118,446	1,728	118,446	74,811	313,431	22.9	418,091	81,070	31,019	2,136,180	86,805
2002 Jun.		971,738	65.3	154,292	1,728	231,507	83,493	471,020	31.6	456,377	64,270	31,812	2,301,032	48,844
Dec.		1,016,416	62.9	172,034	1,515	345,856	91,679	611,084	37.8	545,617	60,082	35,047	2,535,495	43,220
2003 Jun.		1,069,512	60.4	191,709	1,234	412,449	118,234	723,626	40.8	353,842	49,789	38,738	2,540,004	50,060
Dec.		1,197,114	63.0	216,142	182	416,932	125,817	759,073	39.9	382,802	53,388	41,670	2,720,964	49,438
2004 Jun.		1,358,009	63.3	240,842	77	408,438	132,026	781,383	36.4	442,162	53,879	46,766	3,003,025	42,799
Dec.		1,629,345	70.4	209,174	87	265,068	141,065	615,394	26.6	478,192	45,516	49,788	3,274,692	77,781
2005 Jun.		1,801,161	70.0	173,788	77	415,016	140,453	729,334	28.3	563,552	42,386	61,809	3,624,387	58,252
2004 Jun.		1,358,009	63.3	240,842	77	408,438	132,026	781,383	36.4	442,162	53,879	46,766	3,003,025	42,799
Jul.		1,347,155	62.8	231,724	77	416,569	132,451	780,821	36.4	435,584	55,117	46,872	3,007,447	57,681
Aug.		1,364,921	63.4	229,397	77	416,204	130,831	776,509	36.0	448,439	55,053	47,483	3,060,995	61,340
Sep.		1,416,076	65.3	220,651	77	360,186	129,667	710,581	32.8	464,341	54,481	48,889	3,082,415	78,000
Oct.		1,473,485	68.0	219,794	77	326,265	129,481	675,617	31.2	468,851	52,556	48,844	3,108,136	48,998
Nov.		1,515,732	69.3	216,858	77	298,324	129,109	644,368	29.4	462,511	50,258	49,486	3,123,430	55,005
Dec.		1,629,345	70.4	209,174	87	265,068	141,065	615,394	26.6	478,192	45,516	49,788	3,274,692	77,781
2005 Jan.		1,637,579	72.5	200,657	89	265,726	136,047	602,519	26.7	465,549	46,062	48,085	3,211,274	58,879
Feb.		1,657,057	71.6	195,327	77	303,359	148,233	646,996	28.0	483,836	46,094	54,032	3,300,570	56,168
Mar.		1,711,045	71.9	187,977	77	328,800	141,375	658,229	27.7	499,086	43,987	58,909	3,384,283	51,059
Apr.		1,720,973	71.7	186,139	77	352,206	132,568	670,990	28.0	526,240	38,300	59,904	3,422,581	50,632
May		1,752,249	72.0	182,111	77	346,973	129,041	658,202	27.1	536,372	39,805	60,403	3,454,606	56,632
Jun.		1,801,161	70.0	173,788	77	415,016	140,453	729,334	28.3	563,552	42,386	61,809	3,624,387	58,252

* Formate revised from July, 2005.

2.8 Scheduled Bank's Consolidated Position

Based on weekly position Liabilities & Assets (All Banks)

(Million Rupees)

Financial Position	2 0 0 5					2006
	Aug.	Sep.	Oct.	Nov.	Dec.	Jan.
ASSETS						
Cash & Balances With Treasury Banks	234,477	218,192	236,221	233,678	270,185	252,421
Balances With Other Banks	112,409	97,734	94,687	99,366	111,638	97,831
Lending To Financial Institutions	178,863	168,589	123,904	168,705	198,618	162,499
Investments - Net	748,250	766,550	730,330	697,669	730,067	755,725
Advances – Net of Provision	1,654,270	1,673,645	1,742,999	1,804,784	1,908,067	1,875,938
Gross Advances	1,786,200	1,803,293	1,879,695	1,941,819	2,043,982	2,009,207
Less: Provision for Non-Performing Advances	131,931	129,648	136,696	137,035	135,914	133,269
Operating Fixed Assets	64,264	64,972	65,858	64,586	65,856	65,698
Deferred Tax Assets	9,969	9,345	9,218	9,249	8,258	8,248
Other Assets	206,741	166,082	154,713	157,003	167,386	164,971
TOTAL ASSETS	3,209,243	3,165,110	3,157,930	3,235,041	3,460,076	3,383,329
LIABILITIES						
Bills Payable	54,619	52,570	53,628	48,211	45,404	47,516
Borrowings	301,565	303,045	289,048	293,708	336,301	307,044
Deposits and Other Accounts	2,425,752	2,408,424	2,418,434	2,483,395	2,661,697	2,588,582
Sub-ordinated Loans	17,900	17,900	19,925	19,924	20,723	20,723
Liabilities Against Assets Subject to Finance Lease	536	516	532	527	619	608
Other Liabilities	181,509	145,720	125,851	128,482	122,605	128,760
Deferred Tax Liabilities	1,948	2,008	1,994	2,001	2,473	2,487
TOTAL LIABILITIES	2,983,831	2,930,182	2,909,412	2,976,249	3,189,822	3,095,720
NET ASSETS	225,413	234,928	248,518	258,792	270,254	287,609
REPRESENTED BY:						
Paid up Capital / Head Office Capital Account	98,347	98,748	99,113	100,423	105,789	106,126
Reserves	70,530	70,584	70,545	71,366	70,754	80,218
Unappropriated / Unremitted Profit	13,280	18,341	29,778	32,375	36,397	39,447
Surplus/ (Deficit) On Revaluation Of Assets	43,256	47,256	49,083	54,628	57,314	61,818
TOTAL	225,413	234,928	248,518	258,792	270,254	287,609

Format of weekly statement of position has been redesigned from the month of July 05 by Banking Supervision Department.

2.8 Scheduled Bank's Consolidated Position

Based on weekly position Liabilities & Assets (All Banks)

(Million Rupees)

Financial Position	2006					
	Feb.	Mar.	Apr.	May	Jun.	Jul.
ASSETS						
Cash & Balances With Treasury Banks	248,912	260,239	249,124	249,157	273,89	301,398
Balances With Other Banks	96,276	92,985	121,371	110,300	120,345	108,572
Lending To Financial Institutions	192,590	165,564	157,205	175,661	226,451	184,544
Investments - Net	759,919	793,157	827,850	821,399	794,584	830,799
Advances – Net of Provision	1,909,150	1,929,796	1,956,194	1,993,920	2,005,658	2,055,633
Gross Advances	2,042,092	2,063,548	2,077,076	2,115,040	2,127,388	2,177,898
Less: Provision for Non-Performing Advances	132,942	133,751	120,882	121,129	121,730	122,265
Operating Fixed Assets	67,506	68,425	70,150	71,577	72,659	74,790
Deferred Tax Assets	8,493	7,204	6,718	6,943	6,760	7,104
Other Assets	170,116	171,057	174,368	171,251	172,644	162,982
TOTAL ASSETS	3,452,962	3,488,427	3,562,978	3,600,208	3,672,997	3,725,821
LIABILITIES						
Bills Payable	45,773	47,717	49,947	47,636	47,282	48,688
Borrowings	318,523	316,459	334,651	346,751	361,080	359,426
Deposits and Other Accounts	2,630,445	2,650,429	2,695,939	2,733,969	2,786,731	2,813,325
Sub-ordinated Loans	20,722	20,722	21,722	21,721	21,721	21,720
Liabilities Against Assets Subject to Finance Lease	591	618	592	591	740	734
Other Liabilities	133,248	127,073	137,009	129,047	133,514	131,994
Deferred Tax Liabilities	3,661	7,091	8,948	8,996	8,554	11,357
TOTAL LIABILITIES	3,152,963	3,170,109	3,248,809	3,288,712	3,359,621	3,387,244
NET ASSETS	299,999	318,318	314,170	311,496	313,376	338,577
REPRESENTED BY:						
Paid up Capital / Head Office Capital Account	106,404	107,411	116,609	119,500	119,860	122,786
Reserves	85,032	93,303	92,135	90,580	89,780	90,740
Unappropriated / Unremitted Profit	43,703	42,118	28,059	27,547	33,428	48,719
Surplus/ (Deficit) On Revaluation Of Assets	64,860	75,486	77,367	73,869	70,308	76,332
TOTAL	299,999	318,318	314,170	311,496	313,376	338,577

2.9 Scheduled Banks' Liquidity Position

All Banks[@]

(Million Rupees)

		LIQUID LIABILITIES IN PAKISTAN			LIQUID ASSETS MAINTAINED IN PAKISTAN				
Last Saturday		Demand	Time		Cash	Balance	Balance		Unencum-
		Liabilities	Liabilities	Total	in	With	With		bered
					Pakistan	SBP	Agents	Gold	Approved
							of SBP		Securities**
2001	Jun.	565,653	691,683	1,257,336	23,232	90,094	9,021	1	229,742
	Dec.	589,911	726,420	1,316,331	24,672	102,101	8,611	1	245,597
2002	Jun.	649,931	793,887	1,443,819	29,329	76,799	10,314	0	394,455
	Dec.	713,429	839,446	1,552,875	28,433	91,914	4,257	0	539,459
2003	Jun.	810,812	889,173	1,699,985	30,926	155,472	5,987	0	574,986
	Dec.	917,242	906,630	1,823,872	33,682	122,610	3,661	0	532,752
2004	Jun.	958,869	965,782	1,924,652	33,908	162,595	4,689	0	484,641
	Dec.	1,062,884	995,135	2,058,019	39,440	126,506	4,186	0	408,263
2005	Jun.	1,131,465	1,138,439	2,269,904	42,461	120,668	5,621	0	529,035
	Dec.	1,289,884	1,244,768	2,534,652	50,145	146,530	15,173	0	515,681
2006	Jun.	1,281,332	1,421,594	2,702,926	55,454	159,210	7,529	0	567,416
2005	Jun.	1,131,465	1,138,439	2,269,904	42,461	120,668	5,621	0	529,035
	Jul.	1,102,574	1,220,912	2,323,486	44,512	117,924	5,792	0	565,180
	Aug.	1,111,842	1,217,428	2,329,270	44,108	132,217	4,924	0	546,181
	Sep.	1,124,539	1,197,277	2,321,816	42,485	118,820	4,538	0	568,060
	Oct.	1,140,967	1,187,938	2,328,905	52,395	129,180	5,524	0	503,738
	Nov.	1,174,773	1,208,855	2,383,628	50,498	127,253	5,678	0	504,104
2006	Dec.	1,289,884	1,244,768	2,534,652	50,145	146,530	15,173	0	515,681
	Jan.	1,190,805	1,287,740	2,478,545	53,717	137,647	5,797	0	511,434
	Feb.	1,191,808	1,333,193	2,525,001	50,592	135,487	5,864	0	538,427
	Mar.	1,248,036	1,403,501	2,651,537	49,892	149,909	6,266	0	546,580
	Apr.	1,246,268	1,371,950	2,618,218	52,766	137,954	7,202	0	564,293
	May	1,265,987	1,384,203	2,650,190	53,751	137,757	7,018	0	570,108
2006	Jun.	1,281,332	1,421,594	2,702,926	55,454	159,210	7,529	0	567,416

** Valued at a price not exceeding current market price

@ Excluding Indian Banks

2.9 Scheduled Banks' Liquidity Position

All Banks[@]

		LIQUID ASSETS MAINTAINED IN PAKISTAN					(Million Rupees)	
		Foreign Banks Deposits with SBP under section 13(3) of the Banking Companies Ordinance				Total	Minimum of Assets required to be held under Section 29 of the Banking Companies Ordinance	Excess of Assets being held over the minimum required under Section 29 of the Banking Companies Ordinance
Last Saturday		Cash	Unencumbered Approved Securities **	Foreign Currency	Share Capital M F B			
2001	Jun.	60	827	21,122	1,245	375,344	251,467	123,877
	Dec.	8	927	21,620	1,705	405,242	263,266	141,976
2002	Jun.	60	827	21,046	1,705	534,537	288,764	245,773
	Dec.	60	828	19,976	1,705	686,632	310,575	376,057
2003	Jun.	60	936	19,828	1,705	789,900	339,997	449,903
	Dec.	560	327	18,799	1,705	714,096	364,774	349,322
2004	Jun.	190	3,601	10,341	1,705	701,670	382,784	318,886
	Dec.	60	129	14,280	1,705	594,569	408,376	186,193
2005	Jun.	60	4,239	15,919	1,675	719,678	450,694	268,984
	Dec.	156	4,020	17,660	1,705	751,070	503,471	247,599
2006	Jun.	156	4,014	19,172	1,705	814,656	537,716	276,940
2005	Jun.	60	4,239	15,919	1,675	719,678	450,694	268,984
	Jul.	60	4,233	15,919	1,705	755,325	461,507	293,818
	Aug.	60	4,233	15,919	1,705	749,347	462,737	286,610
	Sep.	60	4,233	15,919	1,705	755,820	461,262	294,558
	Oct.	60	4,233	15,919	1,705	712,754	462,584	250,170
	Nov.	60	4,239	16,381	1,705	709,918	473,527	236,391
	Dec.	156	4,020	17,660	1,705	751,070	503,471	247,599
2006	Jan.	495	4,179	18,624	1,705	733,598	492,391	241,207
	Feb.	475	4,175	18,624	1,705	755,349	501,627	253,722
	Mar.	156	4,028	18,624	1,705	777,160	527,520	249,640
	Apr.	156	4,025	18,624	1,705	786,725	520,874	265,851
	May	156	4,012	19,172	1,705	793,679	527,180	266,499
	Jun.	156	4,014	19,172	1,705	814,656	537,716	276,940

Note : Figures of Demand and Time Liabilities of Scheduled Banks shown in this table may not tally with the corresponding provisional figures appearing in the table 2.7 on page 26 & 27.

MFB : Macro Finance Bank (Khushali Bank)

2.10 NBFCs Consolidated Financial Position

(Million Rupees)

Assets/ Liabilities	Jun 05 ^P			Sep 05 ^P		
	DFIs	NBFCs	Total	DFIs	NBFCs	Total
1. Currency and Deposits	7,844	9,495	17,339	9,376	21,656	31,032
a. Currency	1	365	366	37	1,090	1,127
b. Transferable Deposits	-	6,119	6,119	-	16,091	16,091
c. Restricted Deposits	-	2,593	2,593	-	160	160
d. Other Deposits	7,843	418	8,261	9,339	4,315	13,654
2. Investment in securities other than shares	18,234	20,161	38,395	18,552	21,370	39,922
a. Short-term	3,419	9,219	12,638	3,274	9,509	12,783
b. Long-term	14,815	10,942	25,757	15,278	11,861	27,139
3. Loans extended (Advances)	40,418	90,108	130,526	44,163	108,801	152,964
a. Short-term	550	13,035	13,585	280	18,919	19,199
b. Long-term	39,868	77,073	116,941	43,883	89,882	133,765
4. Investment in shares	20,212	98,046	118,258	20,068	115,676	135,744
a. Quoted	20,212	96,890	117,102	20,068	114,458	134,526
b. Non quoted	-	1,156	1,156	-	1,218	1,218
5. Insurance Technical Reserve	-	-	-	-	-	-
a. Life	-	-	-	-	-	-
b. Non-life	-	-	-	-	-	-
6. Financial Derivatives	-	-	-	-	-	-
7. Other accounts receivable	4,423	22,793	27,216	5,007	16,410	21,417
8. Non-financial assets	-	5,868	5,868	-	8,342	8,342
a. Produced assets	-	3,566	3,566	-	4,615	4,615
i. Fixed assets	-	3,353	3,353	-	4,393	4,393
ii. Inventories	-	-	-	-	52	52
iii. Valuables	-	-	-	-	-	-
iv. Other produced assets	-	213	213	-	170	170
b. Non-produced assets	-	2,302	2,302	-	3,727	3,727
i. Land	-	1,572	1,572	-	2,281	2,281
ii. Other-non-produced assets	-	730	730	-	1,446	1,446
Total Assets/ Liabilities	91,131	246,471	337,602	97,166	292,254	389,420
1. Deposits	25,583	25,348	50,931	26,463	28,863	55,326
a. Restricted deposits	-	22,371	22,371	-	17,788	17,788
b. Other deposits	25,583	2,978	28,561	26,463	11,075	37,538
2. Securities other than shares (bonds/debentures etc)	-	7,836	7,836	-	10,352	10,352
a. Short-term	-	4,627	4,627	-	5,884	5,884
b. long-term	-	3,209	3,209	-	4,468	4,468
3. Loans (Borrowings)	30,826	48,435	79,261	34,366	64,562	98,928
a. Short-term	-	18,453	18,453	-	26,351	26,351
b. Long-term	30,826	29,982	60,808	34,366	38,211	72,577
4. Financial Derivatives	-	7	7	-	8	8
5. Other accounts payable	3,276	31,978	35,254	3,143	32,449	35,592
6. Shares and other equity	31,446	132,868	164,314	33,194	156,019	189,213
a. Quoted	10,397	64,092	74,489	10,808	76,650	87,458
b. Non quoted	-	10,713	10,713	-	10,538	10,538
c. Retained earnings	-	37,717	37,717	-	47,647	47,647
d. Current year result	2,777	7,536	10,313	3,304	4,799	8,103
e. General and special reserves	18,272	10,966	29,238	19,082	12,939	32,021
f. Valuation adjustments	-	1,844	1,844	-	3,446	3,446

NBFCs Non Bank Financial Companies

DFIs Development Finance Institutions

2.10 NBFCs Consolidated Financial Position

(Million Rupees)

Assets/ Liabilities	Dec 05 ^P			Mar 06 ^P		
	DFIs	NBFCs	Total	DFIs	NBFCs	Total
1. Currency and Deposits	13,872	21,358	35,230	7,550	26,154	33,704
a. Currency	4	688	692	48	1,800	1,848
b. Transferable Deposits	-	13,643	13,643	-	17,885	17,885
c. Restricted Deposits	-	3,266	3,266	-	231	231
d. Other Deposits	13,868	3,761	17,629	7,502	6,238	13,740
2. Investment in securities other than shares	20,484	18,283	38,767	20,837	16,080	36,917
a. Short-term	5,485	7,722	13,207	5,831	6,019	11,850
b. Long-term	14,999	10,561	25,560	15,006	10,061	25,067
3. Loans extended (Advances)	47,473	115,693	163,166	49,916	101,746	151,662
a. Short-term	371	22,065	22,436	812	23,137	23,949
b. Long-term	47,102	93,628	140,730	49,104	78,609	127,713
4. Investment in shares	23,830	131,174	155,004	25,871	162,222	188,093
a. Quoted	23,830	129,858	153,688	25,871	160,521	186,392
b. Non quoted	-	1,316	1,316	-	1,701	1,701
5. Insurance Technical Reserve	-	-	-	-	-	-
a. Life	-	-	-	-	-	-
b. Non-life	-	-	-	-	-	-
6. Financial Derivatives	-	-	-	-	-	-
7. Other accounts receivable	4,158	16,091	20,249	6,130	31,337	37,467
8. Non-financial assets	-	8,466	8,466	-	8,438	8,438
a. Produced assets	-	4,676	4,676	-	4,746	4,746
i. Fixed assets	-	4,401	4,401	-	4,410	4,410
ii. Inventories	-	99	99	-	107	107
iii. Valuables	-	-	-	-	-	-
iv. Other produced assets	-	176	176	-	229	229
b. Non-produced assets	-	3,790	3,790	-	3,692	3,692
i. Land	-	2,303	2,303	-	2,883	2,883
ii. Other non-produced	-	1,487	1,487	-	809	809
Total Assets/ Liabilities	109,817	311,065	420,882	110,304	345,977	456,281
1. Deposits	34,443	34,138	68,581	29,065	31,411	60,476
a. Restricted deposits	-	19,651	19,651	-	14,239	14,239
b. Other deposits	34,443	14,487	48,930	29,065	17,172	46,237
2. Securities other than shares (bonds/debentures etc)	-	9,355	9,355	-	6,460	6,460
a. Short-term	-	4,596	4,596	-	1,305	1,305
b. long-term	-	4,759	4,759	-	5,155	5,155
3. Loans (Borrowings)	35,369	70,522	105,891	37,562	71,609	109,171
a. Short-term	550	27,411	27,961	2,115	30,172	32,287
b. Long-term	34,819	43,111	77,930	35,447	41,437	76,884
4. Financial Derivatives	-	11	11	-	6	6
5. Other accounts payable	3,298	32,444	35,742	6,363	31,569	37,932
6. Shares and other equity	36,707	164,595	201,302	37,314	204,922	242,236
a. Quoted	11,437	73,534	84,971	11,437	84,455	95,892
b. Non quoted	-	6,289	6,289	-	14,382	14,382
c. Retained earnings	-	56,576	56,576	-	63,331	63,331
d. Current year result	4,676	10,685	15,361	2,070	24,083	26,153
e. General and special reserves	20,594	13,989	34,583	23,807	14,774	38,581
f. Valuation adjustments	-	3,522	3,522	-	3,897	3,897

2.11 Currency in Circulation

(Million Rupees)

END OF PERIOD						Held by	Held by	Currency	Currency	
		Subsidiary	One	Five Rupee	Total	Banking	Issue	In tills of	In	
			Coins			Rupee	Department	Department	Scheduled	Circulation
			and above			Bills & above	of SBP	of SBP	Banks	(4-5-6-7)
		1	2	3	4	5	6	7	8	
2001	Jun.	708	2,726	393,114	396,548	178	1,727	19,178	375,465	
	Dec.	710	2,916	450,105	453,731	187	1,718	22,466	429,360	
2002	Jun.	665	3,055	458,375	462,095	127	1,738	26,414	433,816	
	Dec.	665	3,423	511,287	515,375	169	1,951	25,510	487,746	
2003	Jun.	662	4,004	522,891	527,558	214	2,351	30,415	494,577	
	Dec.	662	4,405	595,285	600,352	126	2,435	30,273	567,517	
2004	Jun.	664	4,941	611,904	617,508	161	2,799	36,432	578,116	
	Dec.	667	5,574	691,072	697,313	126	3,068	38,836	655,283	
2005	Jun	667	6,093	705,720	712,480	146	2,961	43,472	665,901	
	Dec.	667	6,618	769,617	776,902	157	2,470	42,527	731,749	
2006	Jun. *	667	6,918	795,364	802,949	126	2,586	43,124	757,112	
2005	Jun.	667	6,093	705,720	712,480	146	2,961	43,472	665,901	
	Jul.	667	6,095	708,590	715,351	147	2,633	37,244	675,328	
	Aug.	667	6,077	703,015	709,759	129	2,440	37,481	669,708	
	Sep.	667	6,144	709,373	716,184	197	2,265	40,003	673,719	
	Oct.	667	6,188	766,180	773,034	240	2,116	43,398	727,280	
	Nov.	667	6,605	779,173	786,445	144	2,512	40,880	742,909	
	Dec.	667	6,618	769,617	776,902	157	2,470	42,527	731,749	
	Jan.	667	6,645	795,237	802,549	184	2,416	42,766	757,182	
2006	Feb.	667	6,618	792,537	799,822	157	2,390	41,824	755,451	
	Mar.	667	6,918	784,965	792,549	126	2,686	44,927	744,810	
	Apr.	667	6,965	783,483	791,115	173	2,652	42,092	746,197	
	May	667	6,923	794,210	801,800	131	2,637	42,842	756,191	
	Jun. *	667	6,918	795,364	802,949	126	2,586	43,124	757,112	

Note: The quarter end data relate to last working day whereas monthly data are of last Saturday of the month .

Totals may not tally due to separate rounding off.

* As on 24th June 2006