

6.1 Government of Pakistan Treasury Bills

(Million Rupees)

PERIOD	3 months Government of Pakistan Treasury Bills					6 months Government of Pakistan Treasury Bills			
	Issue	Discount		Discount Paid	Outstanding Balance	Issue	Discount		Discharged
		Allowed	Discharged				Allowed	Discharged	
2001 Jun.	9,218.9	251.1	23,794.9	605.1	14,679.1	13,821.4	879.5	379.3	
Dec.	982.7	17.3	6,255.8	144.2	7,954.8	8,079.2	321.7	13,820.9	
2002 Jun.	-	-	4,934.9	65.2	11,250.2	12,943.9	407.0	8,079.2	
Dec.	495.6	4.5	-	-	495.6	12,970.3	279.7	12,943.9	
2003 Jun.	-	-	17,222.3	77.7	498.1	1,487.7	12.4	12,970.3	
Dec.	-	-	5,183.2	16.8	10,365.2	297.6	2.4	24,976.9	
2004 Jun.	-	-	20,926.6	73.4	30,356.2	-	-	297.6	
Dec.	15,113.8	136.2	17,332.4	117.6	61,089.6	-	-	-	
2005 Jun.	74,533.5	1,237.8	76,332.8	867.2	254,698.5	59,097.9	273.1	-	
Dec.	2,734.1	50.9	8,280.6	154.4	14,615.3	1,728.9	71.1	59,097.9	
2006 Jun.	1,800.8	34.2	12,109.3	225.7	2,095.3	623.8	26.2	1,728.9	
2005 Aug.	15,496.7	278.3	83,166.8	1,344.8	128,584.5	15,527.7	622.3	976.7	
Sep.	102,669.6	1,890.4	110,140.0	1,856.4	121,114.1	4,997.5	202.5	37,368.7	
Oct.	8,197.2	152.8	9,579.5	170.5	119,731.8	480.5	19.5	7,881.9	
Nov.	3,683.9	68.7	103,253.9	1,896.1	20,161.8	912.5	37.5	490.9	
Dec.	2,734.1	50.9	8,280.6	154.4	14,615.3	1,728.9	71.1	59,097.9	
2006 Jan.	13,767.0	256.6	8,197.2	152.8	20,185.0	2,669.6	110.3	35,512.7	
Feb.	5,988.4	111.6	3,683.9	68.7	22,489.5	480.2	19.9	15,527.7	
Mar.	13,581.8	253.2	16,304.8	303.9	19,766.5	3,872.5	160.1	4,997.5	
Apr.	98.2	1.8	3,534.1	65.9	16,330.6	96.0	4.0	480.5	
May	196.3	3.7	4,123.1	76.9	12,403.8	192.0	8.0	912.5	
Jun.	1,800.8	34.2	12,109.3	225.7	2,095.3	623.8	26.2	1,728.9	
Jul.	47,494.9	908.9	98.2	3.7	49,492.0	6,559.5	277.5	2,669.6	
Aug.	21,128.4	421.6	1,702.7	32.3	68,917.6	7,184.3	315.7	968.0	

Note : Six months Government of Pakistan Treasury Bills restarted w. e. f. June 1998 and 3 & 12 months Government of Pakistan Treasury Bills restarted w.e.f July 1998.

6.1 Government of Pakistan Treasury Bills

(Million Rupees)

PERIOD	6 months Government of Pakistan Treasury Bills		12 months Government of Pakistan Treasury Bills (Auctioned and Rollover)					
	Discount Paid	Outstanding Balance	Issue	Discount Allowed	Discharged	Discount Paid	Outstanding Balance	
2001	Jun.	20.7	40,986.1	3,367.7	432.3	-	-	48,431.8
	Dec.	879.5	42,737.7	2,869.3	241.0	206.0	23.6	59,872.5
2002	Jun.	321.7	118,439.3	1,682.6	117.4	3,367.7	432.3	78,443.8
	Dec.	407.0	192,607.3	18,829.1	820.9	2,869.3	241.0	180,325.0
2003	Jun.	279.7	148,617.6	25,403.2	596.8	1,682.6	117.4	253,908.5
	Dec.	223.1	78,346.6	392.3	7.7	18,829.1	820.9	297,695.1
2004	Jun.	2.4	78,909.1	-	-	25,403.2	596.8	236,420.9
	Dec.	-	118,457.3	-	-	196.1	3.9	91,601.7
2005	Jun.	-	132,708.3	48,360.1	1,229.2	-	-	65,798.8
	Dec.	2,335.8	59,159.9	82,036.8	7,174.7	-	-	329,870.2
2006	Jun.	71.1	7,934.1	28,686.2	2,513.8	48,360.1	4,039.9	422,647.0
2005	Aug.	23.4	155,879.7	37,909.2	3,290.8	534.9	15.1	165,530.2
	Sep.	1,001.3	123,508.6	15,722.5	1,377.7	6,798.7	201.3	174,454.0
	Oct.	278.1	116,107.2	14,069.5	1,230.5	192.6	7.4	188,330.9
	Nov.	19.1	116,528.8	59,676.1	5,218.9	287.3	12.7	247,719.7
	Dec.	2,335.8	59,159.9	82,150.5	7,184.7	-	-	329,870.2
2006	Jan.	1,412.3	26,316.7	39,647.9	3,468.4	1,239.4	60.6	368,278.7
	Feb.	622.3	11,269.1	13,561.8	1,188.3	94.8	5.2	381,745.6
	Mar.	202.5	10,144.2	53,022.2	4,646.4	2,968.7	169.4	431,799.2
	Apr.	19.5	9,759.7	13,929.3	1,220.7	1,774.3	125.7	443,954.1
	May	37.5	9,039.2	1,379.1	120.9	3,012.3	237.7	442,320.9
	Jun.	71.1	7,934.1	28,686.2	2,513.8	48,360.1	4,039.9	422,647.0
	Jul.	75.3	11,824.1	37,889.9	3,321.1	62,892.7	5,332.3	397,644.2
	Aug.	40.0	18,040.3	490.9	44.1	45,035.0	3,915.0	353,100.1

Source: Exchange and Debt Management Department, SBP

6.2 Sale / Purchase of Treasury Bills Under Open Market Operation by SBP with Banks

SALE

(Billion Rupees)

PERIOD	2002-03		2003-04		2004-05		2005-06		2006-07	
	Bid Amount		Bid Amount		Bid Amount		Bid Amount		Bid Amount	
	Offered	Accepted	Offered	Accepted	Offered	Accepted	Offered	Accepted	Offered	Accepted
July	16.8	12.0	72.1	41.5	74.3	71.5	56.5	46.8	159.3	133.5
August	-	-	19.5	8.0	66.9	57.9	86.0	65.2	131.9	105.7
September	30.1	16.9	101.8	76.0	13.2	4.0	83.9	69.7		
October	-	-	29.9	13.0	61.8	52.6	14.0	9.0		
November	27.4	13.0	-	-	59.9	42.4	32.0	26.5		
December	-	-	32.5	29.5	103.2	95.2	159.2	95.9		
January	-	-	62.7	54.5	15.4	6.5	82.5	67.1		
February	-	-	26.6	22.0	60.8	56.6	80.5	64.7		
March	-	-	26.9	16.6	83.7	60.8	44.5	41.1		
April	-	-	27.3	24.0	90.9	49.6	-	-		
May	-	-	16.0	4.9	73.1	49.2	6.6	4.0		
June	53.2	25.0	145.2	120.9	95.5	64.9	235.4	153.8		
Average										
per month	10.6	5.6	46.7	34.2	66.5	50.9	73.4	53.6	145.6	119.6
per day	0.4	0.2	1.6	1.1	2.2	1.7	2.5	1.8	4.9	4.0

PURCHASE

PERIOD	Amount		Amount		Amount		Amount		Amount	
	Offered	Injected	Offered	Injected	Offered	Injected	Offered	Injected	Offered	Injected
	July	81.4	51.7	-	-	-	-	-	-	-
August	-	-	-	-	-	-	11.2	8.3	27.2	21.2
September	-	-	-	-	-	-	-	-	-	-
October	-	-	7.8	3.5	16.1	14.0	66.9	38.5		
November	-	-	85.9	56.7	-	-	123.6	74.1		
December	-	-	29.3	16.5	-	-	-	-		
January	-	-	-	-	40.3	21.3	139.6	111.5		
February	-	-	-	-	-	-	60.6	42.8		
March	-	-	-	-	-	-	12.7	10.7		
April	-	-	-	-	-	-	210.5	96.9		
May	6.1	3.1	-	-	20.0	9.0	91.4	46.7		
June	-	-	-	-	-	-	-	-		
Average										
per month	7.3	4.6	10.2	6.4	6.4	3.7	59.7	35.8	13.6	10.6
per day	0.2	0.2	0.3	0.2	0.2	0.1	2.0	1.2	0.5	0.4

Source: Exchange and Debt Management Department, SBP

6.3 SBP 3-Day Repo Facility MTBs / FIBs / PIBs (Outstanding)

Cash Accommodation

(Million Rupees)

PERIOD	2001-02	2002-03	2003-04	2004-05	2005-06	2006-07
July	75,176	94,168	-	700	23,861	38,883
August	38,835	9,490	-	10,600	48,241	19,032
September	47,412	87,535	-	84,760	45,245	
October	107,366	214,984	10,440	63,324	116,512	
November	211,461	103,241	400	14,098	91,780	
December	17,261	29,775	-	-	4,520	
January	17,355	140,540	1,350	115,134	29,760	
February	101,956	2,500	8,340	-	12,032	
March	10,368	-	-	21,695	47,815	
April	45,803	6,625	24,745	800	243,238	
May	130,386	-	1,245	70,787	55,246	
June	24,972	-	-	139,550	44,019	
Average						
per month	69,029	57,405	3,877	43,454	63,522	28,958
per day	2,301	1,913	129	1,448	2,117	965

SBP 3-Day Repo Rates

(Percent per annum)

July	13.00	9.00	7.50	7.50	9.00	9.50
August	12.00	9.00	7.50	7.50	9.00	9.50
September	12.00	9.00	7.50	7.50	9.00	
October	10.00	9.00	7.50	7.50	9.00	
November	10.00	7.50	7.50	7.50	9.00	
December	10.00	7.50	7.50	7.50	9.00	
January	9.00	7.50	7.50	7.50	9.00	
February	9.00	7.50	7.50	7.50	9.00	
March	9.00	7.50	7.50	7.50	9.00	
April	9.00	7.50	7.50	9.00	9.00	
May	9.00	7.50	7.50	9.00	9.00	
June	9.00	7.50	7.50	9.00	9.00	

Note: Rates applicable against T-bills & FIBs, PIBs

Source: Exchange and Debt Management Department, SBP

6.4 Auction of Government of Pakistan Market Treasury Bills (Auction Wise)

(Million Rupees)

AUCTION SETTLEMENT DATE	3 Months Treasury Bills				6 Months Treasury Bills	
	Amount Offered	Amount Accepted	Cutt-off Yield (%)	Weighted Average (%)	Amount Offered	Amount Accepted
2005-06						
19-08-05	27,175	9,025	7.9197	7.8436	13,075	2,775
01-09-05	101,375	96,125	8.1000	7.9919	16,075	4,550
15-09-05	29,500	5,300	8.1000	8.1000	7,750	500
29-09-05	30,935	3,135	8.1000	8.1000	3,950	150
13-10-05	9,150	3,450	8.1000	8.1000	3,400	250
27-10-05	10,800	4,900	8.1000	8.0954	2,300	250
10-11-05	1,403	353	8.1000	8.1000	900	150
24-11-05	8,600	3,400	8.1000	8.1000	4,600	800
8-12-05	1,758	Rejected	Rejected	Rejected	9,700	Rejected
22-12-05	9,685	2,785	8.1000	8.0895	13,850	1,800
05-01-06	19,600	13,800	8.1000	8.1000	4,300	1,300
19-01-06	1,500	200	8.1000	8.1000	3,450	600
02-02-06	13,550	3,400	8.1000	8.1000	3,800	500
16-02-06	8,200	2,700	8.1000	8.1000	3,850	Rejected
02-03-06	14,000	1,500	8.1000	8.1000	2,258	508
16-03-06	14,985	9,235	8.1000	8.1000	3,500	3,000
30-03-06	4,800	3,100	8.1000	8.1000	1,800	500
13-04-06	300	100	8.1000	8.1000	800	100
27-04-06	No Bid	No Bid	No Bid	No Bid	No Bid	No Bid
11-05-06	1,100	100	8.1000	8.1000	100	100
25-05-06	600	100	8.1000	8.1000	100	100
08-06-06	2,535	1,535	8.3256	8.2469	600	600
22-06-06	2,500	300	8.3256	8.3256	4,100	50
2006-07						
06-07-06	52,000	44,100	8.3256	8.3148	13,200	5,700
20-07-06	4,300	4,200	8.3256	8.3256	420	220
03-08-06	13,450	6,050	8.6417	8.6115	2,800	250
17-08-06	16,000	9,000	8.6294	8.6294	3,700	2,650
31-08-06	10,050	6,500	8.6417	8.6417	7,750	4,600

6.4 Auction of Government of Pakistan Market Treasury Bills (Auction Wise)

(Million Rupees)

AUCTION SETTLEMENT DATE	6 Months Treasury Bills		12 Months Treasury Bills			
	Cutt-off Yield (%)	Weighted Average (%)	Amount Offered	Amount Accepted	Cutt-off Yield (%)	Weighted Average (%)
2005-06						
19-08-05	8.1388	8.1056	11,800	2,850	8.7907	8.7865
01-09-05	8.1388	8.1245	13,800	7,750	8.7907	8.7830
15-09-05	8.1388	8.1388	6,800	3,900	8.7907	8.7907
29-09-05	8.1388	8.1388	9,300	5,450	8.7907	8.7896
13-10-05	8.1388	8.1388	4,300	700	8.7907	8.7907
27-10-05	8.1388	8.1388	14,900	14,600	8.7907	8.7687
10-11-05	8.1388	8.1388	18,650	7,150	8.7784	8.7674
24-11-05	8.2910	8.2583	65,045	57,745	8.7907	8.7666
8-12-05	Rejected	Rejected	25,500	19,600	8.7907	8.7874
22-12-05	8.2910	8.2451	72,012	69,612	8.7907	8.7648
05-01-06	8.2910	8.2742	38,125	34,725	8.7907	8.7768
19-01-06	8.2910	8.2910	9,795	8,345	8.7907	8.7523
02-02-06	8.2910	8.2910	13,050	11,250	8.7907	8.7843
16-02-06	Rejected	Rejected	5,800	3,500	8.7907	8.7907
02-03-06	8.2910	8.2910	6,850	6,000	8.7907	8.7808
16-03-06	8.2910	8.2910	16,300	14,200	8.7907	8.7832
30-03-06	8.2910	8.2910	38,915	36,915	8.7907	8.7897
13-04-06	8.2910	8.2910	16,050	14,650	8.7907	8.7878
27-04-06	No Bid	No Bid	600	500	8.7907	8.7907
11-05-06	8.2889	8.2889	1,200	500	8.7907	8.7907
25-05-06	8.2910	8.2910	1,500	1,000	8.7907	8.7907
08-06-06	8.4433	8.4179	28,600	25,700	8.7907	8.7863
22-06-06	8.4869	8.4869	8,300	5,500	8.7907	8.7907
2006-07						
06-07-06	8.4869	8.4850	31,175	29,875	8.7907	8.7903
20-07-06	8.4869	8.4869	11,336	11,336	8.7907	8.7865
03-08-06	8.8142	8.8098	9,100	100	9.0046	9.0046
17-08-06	8.8142	8.8142	7,200	100	9.0046	9.0046
31-08-06	8.8142	8.8142	3,335	335	9.0046	9.0046

Source: Exchange and Debt Management Department ,SBP

6.5 Auction of Pakistan Investment Bonds (PIBs)

(Million Rupees)

AUCTION SETTLEMENT DATE	Tenure	Coupon Rate (%)	Amount Offered	Amount Accepted	Price Accepted = Rs.100	Cut-off Yield Accepted (%)	Weighted Average Yield Accepted (%)
29-05-04	3-Years	6.00	2,969.00	1,869.00	104.47	4.3506	4.2354
	5-Years	7.00	4,434.00	3,134.00	107.05	5.3492	5.2699
	10-Years	8.00	10,460.80	10,060.80	104.37	7.3698	7.1268
09-06-04	15-Years	9.00	8,410.90	3,665.90	100.01	8.9988	8.9935
	20-Years	10.00	10,536.00	3,566.00	100.05	9.9942	9.9927
2004-05							
18-08-04	3-Years	6.00	1,750.00	50.00	101.64	5.4005	5.4005
	5-Years	7.00	1,403.00	226.50	100.84	6.7990	6.3309
	10-Years	8.00	1,600.00	150.00	100.00	8.0000	7.9297
12-11-04	3-Years	6.00	350.00	-	-	-	-
	5-Years	7.00	800.00	150.00	101.05	6.7491	6.6994
	10-Years	8.00	875.00	50.00	100.54	7.9208	7.9208
28-03-05	3-Years	6.00	300.00	50.00	99.06	6.3500	6.3500
	5-Years	7.00	400.00	50.00	97.95	7.5000	7.5000
	10-Years	8.00	438.00	44.00	99.32	8.1000	8.1000
19-05-06	3-Years	9.10	3,896.20	3,205.20	99.10	9.4515	9.3887
	5-Years	9.30	6,526.20	4,608.14	98.57	9.6674	9.6461
	10-Years	9.60	5,590.00	3,424.05	98.28	9.8746	9.8454

Source: Exchange and Debt Management Department, SBP

6.6 Monthly KIBOR

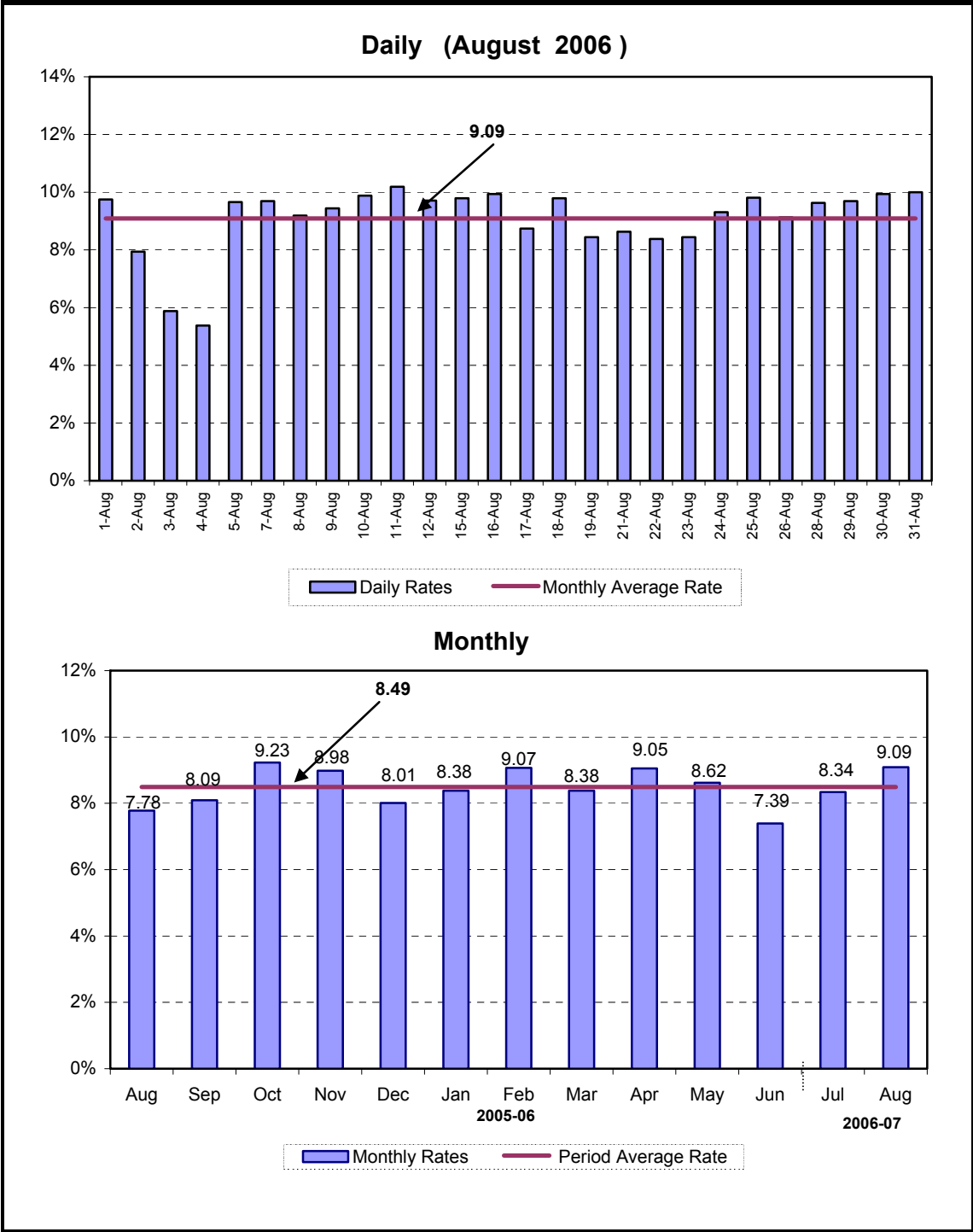
(Percent per annum)

Period			1 Week		2 Week		1Month		3 Month		6 Month		9 Month		12 Month		
			Bid	Offer	Bid	Offer	Bid	Offer	Bid	Offer	Bid	Offer	Bid	Offer	Bid	Offer	
2005	Jul.	Month Average	7.60	8.60	7.72	8.22	7.80	8.30	8.02	8.52	8.40	8.90	8.64	9.14	8.93	9.43	
		End-Month	8.08	9.08	8.10	8.60	8.14	8.64	8.26	8.76	8.60	9.10	8.80	9.30	9.05	9.55	
	Aug.	Month Average	7.35	8.35	7.57	8.07	7.73	8.23	8.07	8.57	8.43	8.93	8.72	9.22	9.03	9.53	
		End-Month	7.42	8.42	7.53	8.03	7.65	8.15	8.04	8.54	8.37	8.87	8.69	9.19	9.04	9.54	
	Sep.	Month Average	7.53	8.53	7.74	8.24	7.85	8.35	8.07	8.57	8.40	8.90	8.71	9.21	9.02	9.52	
		End-Month	7.29	8.29	7.64	8.14	7.89	8.39	8.08	8.58	8.44	8.94	8.71	9.21	9.01	9.51	
	Oct.	Month Average	8.04	9.04	8.15	8.65	8.18	8.68	8.30	8.80	8.53	9.03	8.75	9.25	9.06	9.56	
		End-Month	8.35	9.35	8.41	8.91	8.40	8.90	8.45	8.95	8.60	9.10	8.78	9.28	9.10	9.60	
	Nov.	Month Average	8.13	9.13	8.27	8.77	8.33	8.83	8.48	8.98	8.63	9.13	8.82	9.32	9.09	9.59	
		End-Month	8.25	9.25	8.35	8.85	8.36	8.86	8.55	9.05	8.69	9.19	8.87	9.37	9.10	9.60	
	Dec.	Month Average	7.51	8.51	7.85	8.35	8.14	8.64	8.40	8.90	8.64	9.14	8.88	9.38	9.11	9.61	
		End-Month	7.39	8.39	7.70	8.20	7.92	8.42	8.26	8.76	8.55	9.05	8.85	9.35	9.08	9.58	
	2006	Jan.	Month Average	7.84	8.84	8.07	8.57	8.19	8.69	8.38	8.88	8.63	9.13	8.87	9.37	9.11	9.61
			End-Month	7.93	8.93	8.14	8.64	8.26	8.76	8.48	8.98	8.73	9.23	8.91	9.41	9.13	9.63
		Feb.	Month Average	7.92	8.92	8.11	8.61	8.24	8.74	8.50	9.00	8.75	9.25	8.94	9.44	9.17	9.67
			End-Month	7.97	8.97	8.09	8.59	8.21	8.71	8.58	9.08	8.89	9.39	9.05	9.55	9.28	9.78
		Mar.	Month Average	7.85	8.85	8.07	8.57	8.19	8.69	8.52	9.02	8.84	9.34	9.06	9.56	9.25	9.75
			End-Month	8.22	9.22	8.31	8.81	8.34	8.84	8.63	9.13	8.93	9.43	9.11	9.61	9.29	9.79
		Apr.	Month Average	8.46	9.46	8.54	9.04	8.55	9.05	8.73	9.23	8.98	9.48	9.17	9.67	9.35	9.85
			End-Month	8.71	9.71	8.74	9.24	8.76	9.26	8.87	9.37	9.10	9.60	9.25	9.75	9.45	9.95
		May.	Month Average	8.52	9.52	8.64	9.14	8.71	9.21	8.89	9.39	9.17	9.67	9.33	9.83	9.55	10.05
			End-Month	8.36	9.36	8.48	8.98	8.56	9.06	8.82	9.32	9.16	9.66	9.35	9.85	9.55	10.05
		Jun.	Month Average	7.93	8.93	8.21	8.71	8.37	8.87	8.76	9.26	9.18	9.68	9.40	9.90	9.58	10.08
			End-Month	7.01	8.01	7.75	8.25	8.12	8.62	8.70	9.20	9.11	9.61	9.35	9.85	9.56	10.06
Jul.		Month Average	8.09	9.09	8.45	8.95	8.66	9.16	9.04	9.54	9.41	9.91	9.63	10.13	9.84	10.34	
		End-Month	9.10	10.10	9.39	9.89	9.57	10.07	9.87	10.37	10.15	10.65	10.34	10.84	10.55	11.05	

KIBOR :Karachi Interbank Offered Rate

Source: Exchange & Debt Management Department,SBP

Call Money Rate



6.7 Call Money Rate

(Percent per annum)

MONTH	2001-02	2002-03	2003-04	2004-05	2005-06	2006-07
July	6.94	5.59	0.74	1.90	8.52	8.34
August	8.30	5.32	1.40	3.03	7.78	9.09
September	9.19	7.30	1.01	5.51	8.09	
October	10.41	7.96	2.34	3.40	9.23	
November	9.36	4.90	2.67	4.04	8.98	
December	6.09	4.61	2.43	2.79	8.01	
January	3.61	4.12	1.72	6.53	8.38	
February	5.48	2.36	2.57	2.67	9.07	
March	4.75	1.14	0.99	5.02	8.38	
April	5.66	2.71	3.38	3.95	9.05	
May	6.31	3.83	1.65	6.37	8.62	
June	4.83	0.92	1.46	6.85	7.39	
Average of the period	6.74	4.23	1.86	4.34	8.46	

Source: Daily Business Recorder

6.8 SBP Rates for Market to Market (M 2 M) of Major Currencies

MONTH	US Dollar			Euro			Japanese Yen			Pound Sterling		
	Ready	1Week	1Month	Ready	1Week	1Month	Ready	1Week	1Month	Ready	1Week	1 Month
01-Aug-06	60.2655	60.3095	60.4415	76.7903	76.8835	77.1799	0.5254	0.5263	0.5293	112.4524	112.5503	112.8591
02-Aug-06	60.3100	60.3420	60.4730	77.1908	77.2694	77.5605	0.5263	0.5271	0.5301	113.0149	113.0911	113.3990
03-Aug-06	60.3070	60.3305	60.4635	76.9547	77.0205	77.3086	0.5242	0.5249	0.5279	112.8766	112.9376	113.2470
04-Aug-06	60.3070	60.3375	60.4675	77.1055	77.1798	77.4646	0.5229	0.5236	0.5265	114.0767	114.1480	114.4415
05-Aug-06	60.3010	60.3370	60.4680	77.6707	77.7516	78.0365	0.5271	0.5279	0.5308	115.0875	115.1686	115.4615
07-Aug-06	60.3000	60.3355	60.4620	77.6694	77.7490	78.0382	0.5271	0.5279	0.5309	115.0856	115.1657	115.4537
08-Aug-06	60.3095	60.3458	60.4715	77.4706	77.5510	77.8342	0.5240	0.5248	0.5277	114.9348	115.0167	115.3019
09-Aug-06	60.3070	60.3448	60.4805	77.5940	77.6760	77.9654	0.5237	0.5245	0.5275	114.8909	114.9747	115.2743
10-Aug-06	60.3135	60.3568	60.4890	77.6355	77.7247	78.0094	0.5255	0.5264	0.5293	114.8460	114.9404	115.2327
11-Aug-06	60.3160	60.3593	60.4900	77.1110	77.1999	77.4808	0.5201	0.5210	0.5239	114.3893	114.4834	114.7716
12-Aug-06	60.3260	60.3670	60.4940	76.7890	76.8743	77.1491	0.5188	0.5197	0.5225	114.0674	114.1567	114.4362
15-Aug-06	60.3140	60.3528	60.4805	76.6983	76.7806	77.0612	0.5174	0.5183	0.5212	113.8578	113.9415	114.2233
16-Aug-06	60.3080	60.3440	60.4790	77.1128	77.1919	77.4786	0.5195	0.5203	0.5233	113.9972	114.0760	114.3709
17-Aug-06	60.3340	60.3685	60.5050	77.5895	77.6669	77.9571	0.5231	0.5239	0.5268	114.4114	114.4893	114.7853
18-Aug-06	60.3650	60.3980	60.5325	77.4513	77.5267	77.8137	0.5216	0.5224	0.5253	113.7790	113.8519	114.1437
19-Aug-06	60.3600	60.3925	60.5260	77.4358	77.5106	77.7967	0.5214	0.5222	0.5251	113.5583	113.6301	113.9196
21-Aug-06	60.3925	60.4168	60.5495	77.8822	77.9466	78.2422	0.5227	0.5235	0.5265	114.4861	114.5427	114.8364
22-Aug-06	60.3830	60.4010	60.5340	77.6163	77.6726	77.9632	0.5197	0.5204	0.5233	114.3322	114.3771	114.6693
23-Aug-06	60.3630	60.3838	60.5130	77.3552	77.4151	77.6948	0.5190	0.5197	0.5225	114.1676	114.2175	114.5004
24-Aug-06	60.3450	60.3673	60.4920	77.3744	77.4415	77.7110	0.5184	0.5192	0.5219	114.1818	114.2347	114.5091
25-Aug-06	60.3495	60.3830	60.5055	77.0663	77.1430	77.4133	0.5147	0.5155	0.5183	113.9670	114.0403	114.3084
26-Aug-06	60.3590	60.3905	60.5090	76.9577	77.0315	77.2965	0.5145	0.5153	0.5180	113.9005	113.9699	114.2292
28-Aug-06	60.3515	60.3843	60.5035	77.2891	77.3650	77.6270	0.5158	0.5166	0.5193	114.3178	114.3900	114.6520
29-Aug-06	60.3710	60.4015	60.5205	77.3594	77.4325	77.6898	0.5172	0.5179	0.5205	114.7140	114.7819	115.0435
30-Aug-06	60.4005	60.4290	60.5460	77.4818	77.5523	77.8175	0.5161	0.5169	0.5196	114.8032	114.8674	115.1286
31-Aug-06	60.4130	60.4513	60.5655	77.6307	77.7133	77.9703	0.5159	0.5167	0.5194	115.2318	115.3154	115.5711

6.8 SBP Rates for Market to Market (M 2 M) of Major Currencies

MONTH	Swiss Frank			Australian Dollar			Saudi Arabian Riyal			Kuwaiti Dinnar		
	Ready	1Week	1 Month	Ready	1Week	1 Month	Ready	1Week	1 Month	Ready	1Week	1 Month
01-Aug-06	48.8336	48.9064	49.1544	45.9314	45.9593	46.0404	16.0689	16.0815	16.1195	208.3977	208.5427	208.9702
02-Aug-06	49.0744	49.1380	49.3807	46.1281	46.1471	46.2285	16.0814	16.0908	16.1285	208.5372	208.6406	209.0647
03-Aug-06	48.8791	48.9356	49.1735	45.9027	45.9154	45.9986	16.0793	16.0864	16.1253	208.5485	208.6189	209.0463
04-Aug-06	48.8751	48.9377	49.1741	45.8786	45.8966	45.9765	16.0806	16.0897	16.1275	208.5196	208.6179	209.0384
05-Aug-06	49.3199	49.3873	49.6247	46.1695	46.1915	46.2707	16.0781	16.0887	16.1267	208.5349	208.6522	209.0763
07-Aug-06	49.3191	49.3861	49.6304	46.0632	46.0848	46.1606	16.0787	16.0891	16.1264	208.5026	208.6145	209.0266
08-Aug-06	49.2322	49.2997	49.5378	45.8081	45.8303	45.9054	16.0812	16.0919	16.1287	208.5355	208.6549	209.0739
09-Aug-06	49.2664	49.3348	49.5737	46.0474	46.0706	46.1533	16.0799	16.0909	16.1307	208.5629	208.6864	209.1267
10-Aug-06	49.2898	49.3625	49.5984	46.4293	46.4568	46.5372	16.0821	16.0946	16.1332	208.5421	208.6810	209.1055
11-Aug-06	48.8310	48.9026	49.1355	46.2533	46.2806	46.3598	16.0830	16.0956	16.1337	208.5579	208.7026	209.1415
12-Aug-06	48.5482	48.6182	48.8460	46.2489	46.2744	46.3502	16.0856	16.0977	16.1350	208.5925	208.7292	209.1553
15-Aug-06	48.4937	48.5613	48.7945	45.8929	45.9166	45.9918	16.0820	16.0937	16.1314	208.5438	208.6708	209.0761
16-Aug-06	48.8205	48.8869	49.1226	46.0542	46.0757	46.1573	16.0802	16.0909	16.1312	208.5231	208.6403	209.0710
17-Aug-06	49.1800	49.2454	49.4832	46.2913	46.3111	46.3944	16.0880	16.0983	16.1392	208.6202	208.7250	209.1536
18-Aug-06	48.9837	49.0471	49.2821	45.9438	45.9626	46.0431	16.0954	16.1055	16.1450	208.7202	208.8270	209.2631
19-Aug-06	48.9558	49.0189	49.2524	45.7921	45.8101	45.8916	16.0932	16.1031	16.1428	208.7426	208.8481	209.2913
21-Aug-06	49.3544	49.4112	49.6565	46.0523	46.0648	46.1427	16.1029	16.1104	16.1498	208.8225	208.8993	209.3436
22-Aug-06	49.2059	49.2575	49.4963	46.0934	46.1010	46.1801	16.0998	16.1052	16.1424	208.8005	208.8627	209.3081
23-Aug-06	48.9641	49.0177	49.2472	46.1928	46.2026	46.2798	16.0949	16.1011	16.1377	208.7385	208.8068	209.2355
24-Aug-06	48.9694	49.0294	49.2496	46.0463	46.0561	46.1303	16.0901	16.0965	16.1321	208.6510	208.7209	209.1376
25-Aug-06	48.7574	48.8214	49.0433	45.8505	45.8696	45.9409	16.0908	16.1003	16.1348	208.7063	208.8113	209.2168
26-Aug-06	48.6864	48.7486	48.9674	45.7340	45.7513	45.8192	16.0934	16.1025	16.1366	208.7391	208.8412	209.2325
28-Aug-06	48.8854	48.9489	49.1635	45.8038	45.8223	45.8919	16.0920	16.1013	16.1353	208.6735	208.7797	209.1773
29-Aug-06	49.0203	49.0820	49.2915	46.0238	46.0407	46.1116	16.0970	16.1058	16.1392	208.7409	208.8391	209.2361
30-Aug-06	49.1721	49.2323	49.4507	46.0886	46.1041	46.1708	16.1053	16.1135	16.1471	208.8501	208.9342	209.3026
31-Aug-06	49.2986	49.3669	49.5780	46.1465	46.1694	46.2359	16.1082	16.1189	16.1519	208.8861	209.0041	209.3627

Source: Exchange and Debt Management Department, SBP