

2.1 Gross National Income

(Billion Rupees)

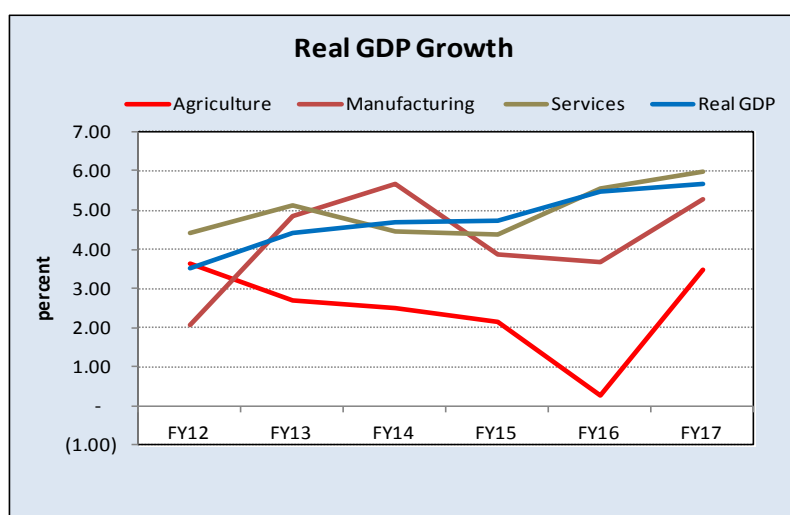
Sector	Current Basic Prices						Constant Basic Prices of 2005-06					
	Amount			Growth (%)			Amount			Growth (%)		
	FY15	FY16 ^R	FY 17 ^P	FY15	FY16 ^R	FY 17 ^P	FY15	FY16 ^R	FY 17 ^P	FY15	FY16 ^R	FY 17 ^P
A. Agriculture Sector	6,536.12	6,759.21	7,369.93	9.37	3.41	9.04	2,202.04	2,208.09	2,284.56	2.13	0.27	3.46
1- Crops (i+ii+iii)	2,690.10	2,629.62	2,869.30	2.95	(2.25)	9.11	868.49	825.35	850.27	0.16	(4.97)	3.02
i. Important Crops	1,735.89	1,725.49	1,847.98	(1.39)	(0.60)	7.10	553.57	523.31	544.88	(1.62)	(5.47)	4.12
ii. Other Crops	769.87	741.45	837.11	10.75	(3.69)	12.90	250.01	251.48	252.01	2.51	0.59	0.21
iii. Cotton Ginning	184.35	162.68	184.21	17.07	(11.75)	13.23	64.92	50.56	53.38	7.24	(22.12)	5.59
2- Livestock	3,612.24	3,846.66	4,160.66	15.42	6.49	8.16	1,246.51	1,288.37	1,332.58	3.99	3.36	3.43
3- Forestry	142.90	170.71	201.21	(7.04)	19.46	17.87	40.76	46.59	53.34	(12.45)	14.31	14.49
4- Fishing	90.87	112.22	138.76	13.76	23.49	23.65	46.28	47.78	48.37	5.75	3.25	1.23
B. Industrial Sector	5,239.15	5,311.05	5,700.11	3.95	1.37	7.33	2,198.03	2,325.44	2,442.20	5.18	5.80	5.02
1- Mining & Quarrying	707.24	656.71	653.51	(4.56)	(7.14)	(0.49)	313.71	335.24	339.75	4.97	6.86	1.34
2- Manufacturing	3,510.54	3,511.57	3,803.63	2.99	0.03	8.32	1,441.46	1,494.17	1,572.95	3.88	3.66	5.27
i. Large-Scale	2,853.22	2,800.18	3,014.55	1.02	(1.86)	7.66	1,159.05	1,193.14	1,251.98	3.28	2.94	4.93
ii. Small-Scale	373.60	406.65	456.67	14.24	8.85	12.30	183.61	198.65	214.91	8.21	8.20	8.18
iii. Slaughtering	283.72	304.74	332.41	10.41	7.41	9.08	98.80	102.37	106.07	3.34	3.61	3.61
3- Electricity and Gas Distribution	480.52	536.85	560.14	18.30	11.72	4.34	186.17	201.87	208.73	13.48	8.43	3.40
4- Construction	540.86	605.92	682.83	11.65	12.03	12.69	256.69	294.15	320.77	7.26	14.60	9.05
Commodity Producing Sector (A+B)	11,775.27	12,070.26	13,070.03	6.89	2.51	8.28	4,400.07	4,533.52	4,726.76	3.63	3.03	4.26
C. Services Sector	14,314.42	15,359.04	16,825.93	10.00	7.30	9.55	6,231.58	6,577.14	6,970.20	4.36	5.55	5.98
1- Wholesale and Retail Trade	5,045.26	5,098.41	5,584.20	2.45	1.05	9.53	1,943.61	2,026.31	2,164.40	2.60	4.25	6.82
2- Transport, Storage and Communication	3,107.79	3,542.86	3,797.27	25.58	14.00	7.18	1,424.26	1,492.88	1,551.71	5.07	4.82	3.94
3- Finance and Insurance	595.96	541.81	584.93	2.04	(9.09)	7.96	335.45	355.97	394.32	6.35	6.12	10.77
4- Housing Services (OD)	1,371.44	1,506.40	1,667.47	11.58	9.84	10.69	718.67	747.35	777.16	3.99	3.99	3.99
5- General Government Services	1,818.48	2,050.56	2,282.51	9.52	12.76	11.31	758.75	832.51	890.05	4.82	9.72	6.91
6- Other Private Services	2,375.50	2,619.00	2,909.55	11.02	10.25	11.09	1,050.84	1,122.14	1,192.56	6.06	6.78	6.28
GDP (Total of GVA at bp) (A+B+C)	26,089.69	27,429.29	29,895.96	8.58	5.13	8.99	10,631.65	11,110.66	11,696.96	4.06	4.51	5.28
Taxes	1,633.88	1,901.74	2,194.27	10.39	16.39	15.38	616.35	725.00	804.38	10.72	17.63	10.95
Subsidies	280.55	228.41	228.07	(17.53)	(18.59)	(0.15)	107.86	85.98	84.42	(21.18)	(20.29)	(1.81)
GDP at mp (GVA+T-S)	27,443.02	29,102.63	31,862.17	9.04	6.05	9.48	11,140.14	11,749.69	12,416.92	4.73	5.47	5.68
Net Factor Income from Abroad	1,674.81	1,784.12	1,772.24	17.27	6.53	(0.67)	548.90	656.29	664.11	15.80	19.56	1.19
Gross National Income	29,117.83	30,886.75	33,634.41	9.48	6.08	8.90	11,689.04	12,405.97	13,081.03	5.20	6.13	5.44
Population (Millions)	189.87	193.56	197.26	1.98	1.94	1.91	189.87	193.56	197.26	1.98	1.94	1.91
Per capita income (Rupees)	153,357	159,572	170,508	7.36	4.05	6.85	61,563	64,094	66,314	3.16	4.11	3.46

P: Provisional R: Revised

Source: Pakistan Bureau of Statistics

Note: Total may differ due to rounding off and growths (%) are arrived at from original value.

FC: Factor Cost, MP: Market Price P: Provisional, R: Revised OD: Ownership of Dwellings



2.2 Expenditure on Gross National Product

(Billion Rupees)

Expenditure	Current Basic Prices					Constant Basic Prices of 2005-06				
	FY 13	FY 14 ^R	FY 15 ^R	FY 16 ^R	FY 17 ^P	FY 13	FY 14 ^R	FY 15 ^R	FY 16 ^R	FY 17 ^P
GDP by Expenditure	22,385.66	25,168.81	27,443.02	29,102.63	31,862.17	10,161.85	10,636.89	11,140.14	11,749.69	12,416.92
Household Final Consumption Expenditure	18,091.83	20,391.21	21,890.28	23,285.75	26,075.28	1,112.40	1,129.12	1,220.93	1,321.40	1,462.58
General Government Final Consumption Expenditure	2,463.12	2,708.92	3,011.20	3,287.93	3,786.76	1,332.65	1,366.26	1,581.76	1,687.44	1,827.12
Gross Fixed Capital Formation	2,990.13	3,280.82	3,871.40	4,061.10	4,517.04	162.59	170.19	178.24	188.00	198.67
Changes in Inventories	358.17	402.70	439.09	465.64	509.80	1,243.43	1,225.03	1,147.32	1,128.92	1,126.40
Export of Goods and Non-factor Services	2,972.18	3,081.31	2,910.17	2,659.18	2,641.62	1,554.63	1,558.58	1,533.53	1,713.07	2,124.08
Less Import of goods and non-factor services	4,489.77	4,696.16	4,679.11	4,656.97	5,668.33	7,865.41	8,304.88	8,545.42	9,137.00	9,926.24

Growth (%)

GDP by Expenditure	11.70	12.43	9.04	6.05	9.48	4.40	4.67	4.73	5.47	5.68
Household Final Consumption Expenditure	9.50	12.71	7.35	6.37	11.98	2.10	1.50	8.13	8.23	10.68
General Government Final Consumption Expenditure	17.10	9.98	11.16	9.19	15.17	10.10	2.52	15.77	6.68	8.28
Gross Fixed Capital Formation	10.70	9.72	18.00	4.90	11.23	2.60	4.67	4.73	5.47	5.68
Changes in Inventories	11.70	12.43	9.04	6.05	9.48	4.40	(1.48)	(6.34)	(1.60)	(0.22)
Export of Goods and Non-factor Services	19.60	3.67	(5.55)	(8.62)	(0.66)	13.60	0.25	(1.61)	11.71	23.99
Less Import of goods and non-factor services	9.70	4.60	(0.36)	(0.47)	21.72	1.80	5.59	2.90	6.92	8.64

P: Provisional R: Revised

Source: Pakistan Bureau of Statistics

1. The series may not be comparable with similar series given in earlier reports due to revisions by the Pakistan Bureau of Statistics.
2. The figures of exports and imports used in this table are based on trade statistics which are compiled on the basis of actual entry of imports and actual exit of exports from the country. The deficit on the current account of the balance of payment computed from these data does not equal the estimates of external resource inflow provided by Planning Division (Table -2.4) as the latter is based on Balance of Payment data compiled on the basis of Payments for imports and receipts from exports
3. The figure of net factor income from abroad given in the table includes the imputed value of accompanied personal baggage whereas Planning Division's estimates of this variable (Difference of national and domestic savings given in Table-2.4) exclude personal baggage. Hence the two figures are not comparable.

2.3 Gross Fixed Capital Formation

Sectors		(Billion Rupees)									
		At Current Market Prices					At Constant Market Prices of 2005-06				
		FY 13	FY 14 ^R	FY 15 ^R	FY 16 ^R	FY 17 ^P	FY 13	FY 14 ^R	FY 15 ^R	FY 16 ^R	FY 17 ^P
TOTAL (I+II)		3,275.22	3,487.83	4,156.31	4,302.73	4,839.03	1,332.65	1,366.26	1,581.76	1,687.44	1,827.12
I- Private Sector		2,487.40	2,690.83	3,128.07	3,199.51	3,475.94	1,005.53	1,062.26	1,190.71	1,264.55	1,316.79
Agriculture		698.90	725.39	820.39	849.93	919.93	300.99	296.80	315.46	315.51	329.52
Mining and Quarrying		44.42	70.14	74.36	93.43	98.88	12.27	17.79	15.41	23.44	17.15
Manufacturing		372.58	381.42	429.48	470.47	504.93	150.24	142.49	162.36	179.32	179.17
(i) Large Scale		351.72	357.56	403.09	441.19	471.60	140.72	132.28	151.39	167.54	166.53
(ii) Small Scale (including Slaughtering)		20.87	23.87	26.40	29.27	33.32	9.51	10.22	10.97	11.77	12.64
Electricity Generation & Distribution and Gas Distribution		162.76	104.93	218.45	167.94	184.60	4.03	7.70	19.95	3.51	4.65
Construction		30.22	49.04	39.70	49.01	89.77	7.59	14.41	14.34	21.37	40.78
Wholesale and Retail Trade		64.42	73.00	74.71	77.12	85.69	26.21	27.46	28.18	29.40	31.41
Transport, Storage and Communication		351.98	436.68	538.93	511.12	518.67	116.43	151.47	209.65	243.51	244.65
Finance & Insurance		47.46	40.77	49.56	57.90	70.62	15.00	13.48	16.61	19.44	19.97
Housing Services (Ownership of Dwellings)		468.46	525.82	568.52	577.28	619.51	250.19	260.20	270.61	281.43	292.69
Other Private Services		246.20	283.65	313.97	345.32	383.35	122.58	130.47	138.14	147.62	156.79
II- Public Sector and General Government (A+B)		787.82	797.01	1,028.24	1,103.23	1,363.09	327.12	304.00	391.05	422.90	510.33
(A) Public Sector (Autonomous and Semi-Autonomous Bodies)		285.09	207.01	284.91	241.63	321.99	122.62	82.09	110.65	94.43	128.68
Agriculture		0.09	0.10	0.13	0.15	0.21	0.05	0.05	0.07	0.08	0.11
Mining and Quarrying		15.20	21.93	31.70	28.42	52.13	6.39	8.09	11.46	10.25	19.12
Manufacturing		5.78	5.85	1.76	1.71	17.33	2.35	2.20	0.66	0.65	6.35
Construction		153.17	84.07	163.23	158.21	171.93	64.33	31.02	58.98	57.03	63.06
Electricity Generation & Distribution and Gas Distribution		16.00	19.92	9.57	5.18	3.45	8.55	9.86	4.56	2.52	1.63
Transport, Storage and Communication		84.28	70.21	72.99	41.05	60.82	36.65	29.02	32.84	21.26	32.50
(i) Railways		24.48	8.77	6.20	5.83	11.24	10.65	3.62	2.79	3.02	6.00
(ii) Post Office and PTCL		12.60	18.14	18.23	13.64	11.37	5.48	7.50	8.20	7.07	6.08
(iii) Others		47.20	43.31	48.56	21.58	38.21	20.53	17.90	21.85	11.18	20.42
Finance & Insurance		10.58	4.93	5.54	6.92	16.13	4.30	1.85	2.09	2.64	5.91
(B) General Government		502.73	589.99	743.33	861.60	1,041.10	204.50	221.90	280.40	328.47	381.65
(i) Federal		147.75	164.74	208.95	229.13	299.10	60.10	61.96	78.82	87.35	109.64
(ii) Provincial		288.46	358.79	442.65	527.46	638.09	117.34	134.95	166.98	201.08	233.91
(iii) Local Bodies		66.51	66.47	91.72	105.01	103.91	27.06	25.00	34.60	40.03	38.09
Growth (%)											
TOTAL (I+II)		10.69	6.49	19.17	3.52	12.46	2.58	2.52	15.77	6.68	8.28
I- Private Sector		12.92	8.18	16.25	2.28	8.64	4.29	5.64	12.09	6.20	4.13
Agriculture		11.91	3.79	13.10	3.60	8.24	4.00	(1.39)	6.29	0.02	4.44
Mining and Quarrying		(14.57)	57.91	6.02	25.65	5.84	(25.47)	44.96	(13.35)	52.06	(26.83)
Manufacturing		30.73	2.37	12.60	9.54	7.32	21.03	(5.15)	13.94	10.44	(0.08)
(i) Large Scale		31.81	1.66	12.73	9.45	6.89	22.08	(6.00)	14.45	10.67	(0.61)
(ii) Small Scale (including Slaughtering)		14.87	14.37	10.61	10.90	13.84	7.35	7.37	7.35	7.36	7.36
Electricity Generation & Distribution and Gas Distribution		22.59	(35.53)	108.19	(23.12)	9.92	(86.48)	91.04	159.29	(82.42)	32.50
Construction		23.58	62.28	(19.05)	23.45	83.17	(1.36)	89.77	(0.49)	49.00	90.86
Wholesale and Retail Trade		11.16	13.32	2.35	3.22	11.12	3.55	4.77	2.65	4.31	6.85
Transport, Storage and Communication		31.25	24.06	23.41	(5.16)	1.48	14.49	30.09	38.41	16.15	0.47
Finance & Insurance		31.49	(14.10)	21.56	16.84	21.96	18.13	(10.16)	23.20	17.04	2.76
Housing Services (Ownership of Dwellings)		14.66	12.24	8.12	1.54	7.32	4.00	4.00	4.00	4.00	4.00
Other Private Services		13.64	15.21	10.69	9.99	11.01	5.34	6.44	5.88	6.87	6.21
II- Public Sector and General Government (A+B)		4.89	1.17	29.01	7.29	23.55	(2.34)	(7.07)	28.64	8.14	20.68
(A) Public Sector (Autonomous and Semi-Autonomous Bodies)		82.97	(27.39)	37.63	(15.19)	33.26	63.51	(33.05)	34.78	(14.66)	36.27
Agriculture		(1.06)	3.23	31.25	15.08	42.07	(3.70)	(3.85)	30.00	15.38	40.00
Mining and Quarrying		(15.88)	44.27	44.54	(10.36)	83.42	(27.20)	26.73	41.54	(10.56)	86.62
Manufacturing		100.42	1.32	(69.94)	(2.61)	911.20	86.66	(6.30)	(69.85)	(1.66)	873.05
Construction		114.60	(45.11)	94.15	(3.07)	8.67	85.70	(51.78)	90.12	(3.30)	10.57
Electricity Generation & Distribution and Gas Distribution		40.64	24.49	(51.95)	(45.90)	(33.41)	27.57	15.34	(53.78)	(44.60)	(35.46)
Transport, Storage and Communication		87.27	(16.69)	3.96	(43.77)	48.18	78.74	(20.83)	13.18	(35.25)	52.84
(i) Railways		473.93	(64.18)	(29.33)	(5.99)	92.88	447.92	(65.97)	(23.05)	8.25	98.94
(ii) Post Office and PTCL		(10.93)	43.94	0.52	(25.16)	(16.66)	(14.99)	36.79	9.43	(13.84)	(14.04)
(iii) Others		77.50	(8.25)	12.14	(55.57)	77.11	69.41	(12.81)	22.08	(48.85)	82.69
Finance & Insurance		50.88	(53.40)	12.29	25.00	133.17	40.57	(56.91)	12.62	26.34	124.18
(B) General Government		(15.55)	17.36	25.99	15.91	20.83	(21.33)	8.51	26.36	17.14	16.19
(i) Federal		2.03	11.50	26.84	9.66	30.54	(4.95)	3.09	27.22	10.82	25.52
(ii) Provincial		(22.61)	24.38	23.37	19.16	20.97	(27.90)	15.00	23.74	20.42	16.33
(iii) Local Bodies		(14.48)	(0.07)	38.00	14.49	(1.04)	(20.33)	(7.60)	38.41	15.70	(4.84)

P: Provisional R:Revised

Source: Pakistan Bureau of Statistics

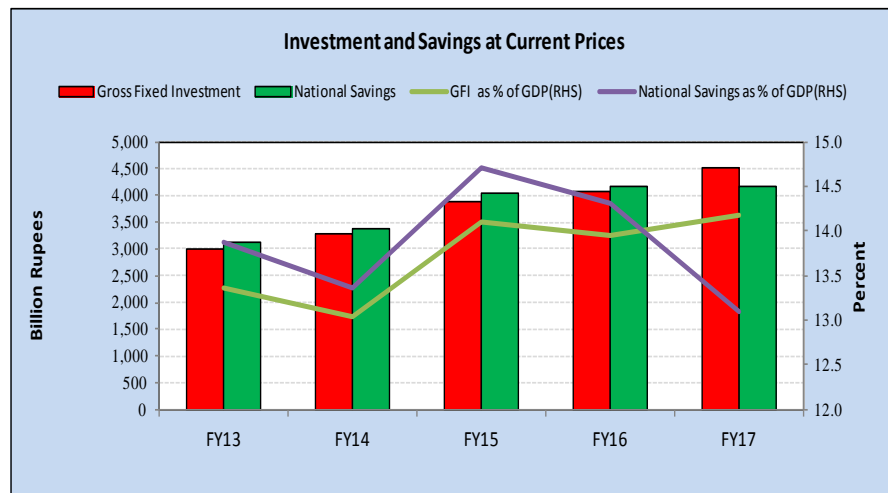
2.4 Investment and Savings at Current Prices

(Billion Rupees)

Item	Amount						As % of GDP				
	Average FY 13-17	FY13	FY14	FY15 ^R	FY16 ^R	FY 17 ^P	FY13	FY14	FY15 ^R	FY16 ^R	FY 17 ^P
Total Investment	4,179.2	3,348.3	3,683.5	4,310.5	4,526.7	5,026.8	15.0	14.6	15.7	15.6	15.8
Gross Fixed Investment	3,744.1	2,990.1	3,280.8	3,871.4	4,061.1	4,517.0	13.4	13.0	14.1	14.0	14.2
Public Sector (Gen. Govt+Public)	1,015.9	787.8	797.0	1,028.2	1,103.2	1,363.1	3.5	3.2	3.7	3.8	4.3
Private Sector	2,728.2	2,202.3	2,483.8	2,843.2	2,957.9	3,153.9	9.8	9.9	10.4	10.2	9.9
Changes in Stocks	435.1	358.2	402.7	439.1	465.6	509.8	1.6	1.6	1.6	1.6	1.6
Net External Resource Inflow	276.3	241.4	322.0	274.4	258.5	285.0	1.1	1.3	1.0	0.9	0.9
Gross National Savings	3,768.0	3,106.9	3,361.5	4,036.1	4,161.7	4,173.9	13.9	13.4	14.7	14.3	13.1
Net Factor Income from abroad	1,564.2	1,161.6	1,428.2	1,674.8	1,784.1	1,772.2	5.2	5.7	6.1	6.1	5.6
Domestic Savings	2,203.8	1,945.3	1,933.3	2,361.3	2,377.6	2,401.7	8.7	7.7	8.6	8.2	7.5
Government	(556.3)	(1,138.8)	(523.3)	(414.2)	(154.0)	(551.2)	(5.1)	(2.1)	(1.5)	(0.5)	(1.7)
Non-Government (including PSEs)	2,781.4	3,084.0	2,456.6	2,775.5	2,638.1	2,952.9	13.8	9.8	10.1	9.1	9.3
GDP (Market Prices)	27,192.5	22,385.7	25,169.0	27,443.0	29,102.6	31,862.2					
GNI (Market Prices)	28,756.7	23,547.3	26,597.0	29,117.8	30,886.7	33,634.4					

P: Provisional, R:Revised

Source: Ministry of Planning, Development and Reform.



2.5 Area, Production and Yield of Important Crops

Area : '000' Hectares

Production : '000' Tonnes

Yield : Kilogram per Hectares

Crop	FY14			FY15			FY16 ^R			FY 17 ^P		
	Area	Production	Yield	Area	Production	Yield	Area	Production	Yield	Area	Production	Yield

Food Crops

Wheat	9,199	25,979	2,824	9,204	25,086	2,726	9,224	25,633	2,779	9,052	25,750	2,845
Rice	2,789	6,798	2,437	2,891	7,003	2,422	2,739	6,801	2,483	2,724	6,849	2,514
Maize	1,168	4,944	4,233	1,142	4,937	4,323	1,191	5,271	4,426	1,334	6,130	4,595

Fibre Crop

Cotton *	2,806	12,769	4,551	2,961	13,960	4,715	2,902	9,917	3,417	2,489	10,671	4,287
----------	-------	--------	-------	-------	--------	-------	-------	-------	-------	-------	--------	-------

Other Crop

Sugarcane	1,173	67,460	57,511	1,141	62,826	55,062	1,131	65,482	57,897	1,217	73,607	60,482
-----------	-------	--------	--------	-------	--------	--------	-------	--------	--------	-------	--------	--------

Growth (%)

Food Crops

Wheat	6.20	7.30	1.00	0.05	(3.44)	(3.49)	0.22	2.18	1.96	(1.86)	0.46	2.37
Rice	20.80	22.80	1.60	3.66	3.02	(0.62)	(5.26)	(2.88)	2.50	(0.55)	0.71	1.26
Maize	10.20	17.20	6.30	(2.23)	(0.14)	2.13	4.29	6.77	2.37	12.01	16.30	3.83

Fibre Crop

Cotton *	(2.50)	(2.00)	0.50	5.52	9.33	3.60	(1.99)	(28.96)	(27.52)	(14.23)	7.60	25.46
----------	--------	--------	------	------	------	------	--------	---------	---------	---------	------	-------

Other Crop

Sugarcane	3.90	5.80	1.90	(2.73)	(6.87)	(4.26)	(0.88)	4.23	5.15	7.60	12.41	4.46
-----------	------	------	------	--------	--------	--------	--------	------	------	------	-------	------

P: Provisional

Source: Pakistan Bureau of Statistics

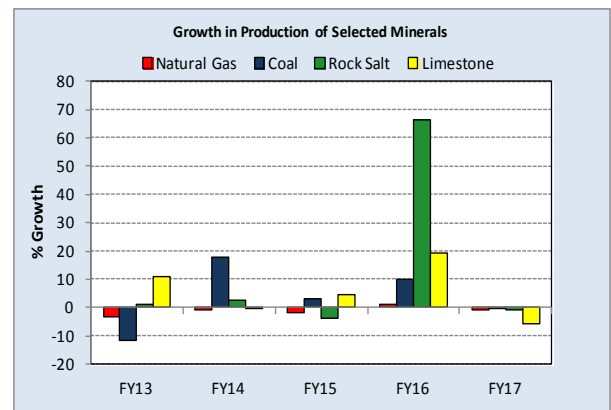
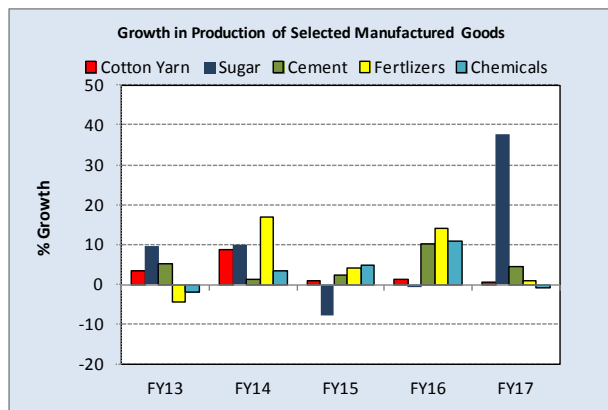
* Production in '000' bales (1 bale = 375 lbs or 170.09711 Kilogram)

2.6 Production of Selected Manufactured Goods and Minerals

Manufactured Goods/Minerals	Average FY 13–16		Production					Growth (%)				
	Production	Growth%	FY13	FY14	FY15	FY16 ^R	FY 17 ^P	FY13	FY14	FY15	FY16 ^R	FY 17 ^P
Manufactured Goods												
Cotton Yarn (Thousand Tons)	3,221	3.0	3,060	3,324	3,360	3,406	3,428	3.6	8.63	1.08	1.37	0.65
Cotton Cloth (Million Meters)	1,033	0.4	1,029	1,036	1,037	1,039	1,043	0.6	0.68	0.10	0.19	0.42
Jute Goods (Thousand Tons)	90	-7.8	103	102	94	55	60	9.3	(0.97)	(7.84)	(41.49)	8.89
Vegetable Ghee (Thousand Tons)	1,170	2.6	1,139	1,185	1,185	1,238	1,312	3.3	4.04	-	4.47	5.97
Cooking Oil (Thousand Tons)	363	4.4	363	375	366	386	392	12.5	3.31	(2.40)	5.46	1.54
Sugar (Thousand Tons)	5,111	4.4	5,074	5,582	5,150	5,115	7,049	9.5	10.01	(7.74)	(0.68)	37.80
Cigarettes (Billion Numbers)	62	-3.5	67	64	63	54	34	8.8	(4.48)	(1.56)	(14.29)	(36.40)
Cement (Thousand Tons)	31,931	4.3	31,055	31,418	32,185	35,442	37,021	5.1	1.17	2.44	10.12	4.46
Pig Iron (Thousand Tons)	161	-4.0	201	89	265	2	0	(19.1)	(55.72)	197.75	(99.25)	(100.00)
Coke (Thousand Tons)	152	113.9	203	32	276	57	0	5.4	(84.24)	762.50	(79.35)	(100.00)
Fertilizers (Thousand Tons)	6,656	6.4	5,717	6,677	6,963	7,946	8,031	(4.4)	16.79	4.28	14.12	1.07
<i>Urea</i>	4,907	5.5	4,215	4,930	5,073	5,847	5,913	(5.7)	16.96	2.90	15.26	1.12
<i>Ammonium Nitrate</i>	514	20.6	401	519	569	647	665	(7.2)	29.43	9.63	13.71	2.73
<i>Nitro-Phosphate</i>	435	20.9	292	447	502	595	630	(13.5)	53.08	12.30	18.53	5.91
<i>Super-Phosphate</i>	83	-14.4	79	88	64	69	82	(30.9)	11.39	(27.27)	7.81	18.33
<i>Dia Ammonium Phosphate</i>	718	3.8	730	693	755	788	741.5	17.2	(5.07)	8.95	4.37	(5.90)
Chemicals (Thousand Tons)	698	3.0	654	677	709	785	777	(1.8)	3.52	4.73	10.72	(1.00)
<i>Soda Ash</i>	410	4.5	366	409	437	469	480	(1.2)	11.75	6.85	7.32	2.29
<i>Caustic Soda</i>	188	6.0	183	167	184	225	224	2.1	(8.74)	10.18	22.28	(0.49)
<i>Chlorine Gas</i>	16	2.3	15	15	17	17	16	(1.7)	-	13.33	-	(4.12)
<i>Sulphuric Acid</i>	84	-7.8	89	85	70	75	56	(10.9)	(4.49)	(17.65)	7.14	(25.33)
Paper & Board (Thousand Tons)	612	7.6	614	685	620	610	407	16.0	11.56	(9.49)	(1.61)	(33.29)
Cycle Tyres & Tubes (Thousand)	11,619	4.5	11,175	12,099	13,028	11,515	11,509	8.7	8.27	7.68	(11.61)	(0.05)
Motor Tyres & Tubes (Thousand)	30,046	4.0	28,133	29,627	30,866	34,253	34,357	2.9	5.31	4.18	10.97	0.30
Tractors (Numbers)	43,469	-9.1	50,871	34,524	48,883	34,914	53,975	5.6	(32.13)	41.59	(28.58)	54.59
Trucks / Buses (Numbers)	4,039	18.8	2,445	3,233	4,614	6,736	8,830	(22.7)	32.23	42.72	45.99	31.09
Motorcycle (Thousand Numbers)	1,780	5.0	1,675	1,728	1,777	2,071	2,501	1.5	3.16	2.84	16.54	20.75
Bicycle (Thousand Numbers)	222	-10.0	233	204	211	199	200	(11.1)	(12.45)	3.43	(5.69)	0.61
Electric Transformers (Thousand Numbers)	24	31.7	26	12	25	32	37	11.5	(53.85)	108.33	28.00	15.63
Minerals												
Natural Gas (Billion Cubic Feet)	1,501	0.2	1,506	1,494	1,466	1,482	1,472	(3.4)	(0.80)	(1.87)	1.06	(0.65)
Crude Oil (Million U.S. Barrels)	30	6.2	28	32	34	32	32	13.3	14.29	7.78	(8.23)	-
Coal (Thousand Tons)	3,239	1.6	2,813	3,311	3,407	3,749	3,747	(11.5)	17.70	2.90	10.04	(0.06)
Rock Salt (Thousand Tons)	2,287	7.9	2,160	2,220	2,136	3,553	3,531	1.1	2.78	(3.78)	66.34	(0.63)
Gypsum (Thousand Tons)	1,402	15.7	1,250	1,322	1,417	1,872	1,998	(0.8)	5.76	7.19	32.11	6.71
Limestone (Thousand Tons)	39,691	8.9	38,932	36,463	40,470	48,287	45,563	11.2	(0.37)	4.34	19.32	(5.64)
China Clay (Thousand Tons)	21	9.9	23	16	19	22	30	6.3	(30.43)	18.75	15.79	35.56
Chromites (Thousand Tons)	117	-6.7	136	83	102	69	104	(23.9)	(38.97)	22.89	(32.35)	50.65
Silica Sand (Thousand Tons)	303	5.6	356	268	269	396	371	32.0	(24.72)	0.37	47.21	(6.38)
Dolomite (Thousand Tons)	379	42.3	336	593	222	717	453	69.3	76.49	(62.50)	222.25	(36.82)
Magnesite (Tons)	10,139	113.4	6,705	3,770	4,611	35,228	18,000	23.2	(43.77)	22.31	664.00	(48.91)
Sulphur (Thousand Tons)	24	-4.7	21	36	20	15	27	(17.8)	71.43	(44.44)	(25.66)	79.71
Baryte (Thousand Tons)	112	43.5	118	132	205	158	54	144.2	13.56	52.99	(22.93)	(66.09)

P: Provisional

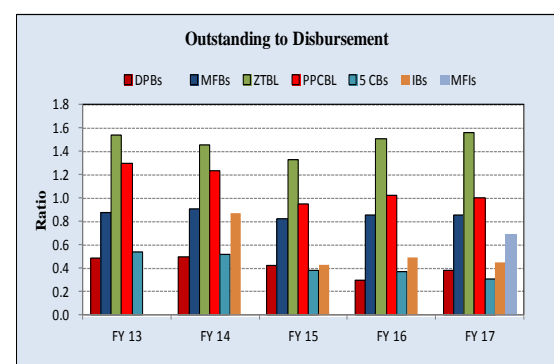
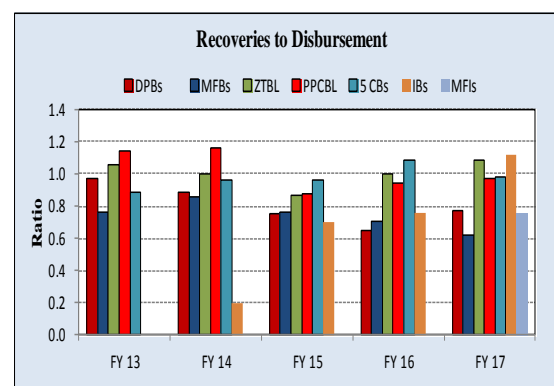
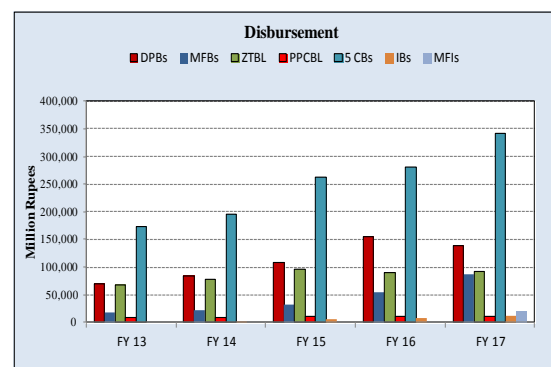
Sources: Pakistan Bureau of Statistics



2.7 Agriculture Credit Disbursement, Recoveries and Outstanding (Net)

(Million Rupees)

Period	DPBs	MFBs	ZTBL	PPCBL	5 CBs	IBs	MFIs	Total
FY 13- 16(Average)								
Disbursement	121,745	49,364	89,294	10,127	270,142	6,846	4,983	552,501
Farm Sector	49,292	30,664	70,274	8,173	126,088	2,038	1,939	288,468
Production Loans	38,233	30,664	63,709	8,089	98,393	1,530	1,939	242,557
Development Loans	7,098	-	6,565	83	2,918	454	-	17,119
Corporate Farming Loans	3,961	-	-	-	24,777	54	-	28,792
Non Farm Sector	72,453	18,700	19,020	1,955	144,054	4,808	3,043	264,033
Recoveries	90,838	34,187	87,923	9,939	269,836	6,012	3,769	502,505
Outstanding	46,505	42,156	130,204	10,572	102,594	3,304	3,448	338,783
FY 14								
Disbursement	84,813	22,796	77,920	8,809	195,488	1,527	-	391,353
Farm Sector	37,549	16,316	67,389	7,055	87,776	1,501	-	217,586
Production Loans	29,405	16,316	58,002	7,045	84,972	1,498	-	197,238
Development Loans	3,932	-	9,387	10	2,804	3	-	16,136
Corporate Farming Loans	4,212	-	-	-	-	-	-	4,212
Non Farm Sector	47,264	6,480	10,531	1,754	107,712	26	-	173,767
Recoveries	74,730	19,543	77,703	10,216	187,951	294	-	370,437
Outstanding	41,689	20,749	113,671	10,816	102,100	1,323	-	290,348
FY 15								
Disbursement	108,708	32,951	95,827	10,486	262,912	4,991	-	515,875
Farm Sector	40,648	24,140	75,178	8,403	123,649	2,299	-	274,317
Production Loans	28,945	24,140	66,074	8,384	117,937	1,702	-	247,182
Development Loans	3,881	-	9,104	19	3,279	547	-	16,830
Corporate Farming Loans	7,822	-	-	-	2,433	50	-	10,305
Non Farm Sector	68,060	8,811	20,649	2,083	139,263	2,692	-	241,558
Recoveries	81,527	25,174	82,716	9,234	252,488	3,510	-	454,649
Outstanding (Principal only)	46,201	27,136	126,788	9,988	101,084	2,157	-	313,354
FY 16								
Disbursement	154,398	53,938	90,977	10,335	280,100	8,540	-	598,288
Farm Sector	72,405	32,558	71,318	8,447	118,564	2,849	-	306,141
Production Loans	62,003	32,558	66,869	8,395	74,197	2,171	-	246,193
Development Loans	9,268	-	4,449	52	2,756	627	-	17,152
Corporate Farming Loans	1,134	-	-	-	41,611	51	-	42,796
Non Farm Sector	81,993	21,380	19,659	1,888	161,536	5,691	-	292,147
Recoveries	99,393	37,937	90,563	9,735	304,346	6,442	-	548,416
Outstanding (Principal only)	45,604	45,810	136,702	10,587	102,722	4,201	-	345,626
FY 17								
Disbursement	139,061	87,772	92,451	10,880	342,068	12,326	19,930	704,488
Farm Sector	46,568	49,644	67,210	8,786	174,362	1,503	7,757	355,829
Production Loans	32,578	49,644	63,890	8,534	116,465	749	7,757	279,617
Development Loans	11,313	-	3,319	252	2,833	640	-	18,357
Corporate Farming Loans	2,677	-	-	-	55,064	114	-	57,854
Non Farm Sector	92,493	38,128	25,241	2,094	167,707	10,823	12,173	348,660
Recoveries	107,704	54,092	100,711	10,570	334,559	13,803	15,078	636,517
Outstanding (Principal only)	52,527	74,927	143,655	10,897	104,472	5,534	13,791	405,803



5 CBs: 5 Major Commercial Banks

DPBs: Domestic Private Bank-5CBs

5 MFBS (Micro Finance Banks) included since July-2011 & 2 MFBS since July 2013)

3 Islamic Banks included since July 2013.

Source: Agricultural Credit & Microfinance

2.8 Holding-wise Agricultural Credit Disbursement

(Million Rupees)

Holding	2013-14	2014-15	2015-16	2016-17			
				Jul-Sep	Jul-Dec	Jul-Mar	Jul-Jun
Farm Sector	217,585.55	274,317.39	306,140.44	44,680.59	143,206.43	231,913.36	355,828.57
Subsistence Holding	124,409.89	145,135.01	152,890.07	21,294.35	64,037.96	102,564.52	158,413.04
Economic Holding	54,051.14	62,362.03	62,349.86	10,265.47	26,918.10	46,095.81	67,897.45
Above Economic Holding	39,124.53	66,820.35	90,900.51	13,120.77	52,250.37	83,253.03	129,518.08
Non Farm Sector	173,767.43	241,557.40	292,146.40	59,179.15	158,524.48	241,172.92	348,659.64
Livestock Dairy & Meat	72,611.59	113,407.37	139,329.15	28,994.16	83,658.30	123,596.41	176,679.57
Small Farm	58,019.45	67,748.74	84,577.43	16,750.34	52,349.58	79,320.99	109,672.03
Large Farm	14,592.15	45,658.63	54,751.73	12,243.82	31,308.72	44,275.42	67,007.54
Poultry	85,828.91	69,803.43	82,397.98	15,843.87	37,666.58	61,458.80	86,212.45
Small Farm	83,349.58	4,873.33	5,677.22	1,020.65	2,259.86	3,577.45	5,150.66
Large Farm	2,479.33	64,930.10	76,720.76	14,823.22	35,406.71	57,881.35	81,061.79
Fisheries	2,407.53	2,327.18	1,719.57	301.70	560.66	978.26	1,383.44
Small Farm	2399.574	284.544	236.482	58.90	115.09	179.03	229.39
Large Farm	7.96	2,042.64	1,483.08	242.80	445.57	799.23	1,154.05
Forestry	174.15	131.062	117.037	27.11	55.91	88.10	108.42
Small Farm	173.65	131.06	117.04	27.11	55.91	88.10	108.42
Large Farm	0.49	-	-	-	-	-	-
Others	12,745.25	55,888.35	68,582.66	14,012.31	36,583.04	55,051.37	84,275.76
Small Farm	12431.474	9,144.12	9,867.76	456.55	1,401.54	2,383.19	4,798.22
Large Farm	313.771	46,744.23	58,714.90	13,555.76	35,181.51	52,668.18	79,477.54
Grand total	391,352.98	515,874.78	598,286.84	103,859.74	301,730.91	473,086.28	704,488.20

Source: Agricultural Credit & Microfinance Department, SBP

Subsistence Holding: upto 12.5 acres in Punjab & Khyber Pakhtunkhwa, upto 16 acres in Sindh, upto 32 acres in Balochistan.

Economic Holding: 12.5 to 50 acres in Punjab & Khyber Pakhtunkhwa, 16 to 64 acres in Sindh, 32 to 64 in Balochistan.

Above Economic Holding: above 50 acres in Punjab & Khyber Pakhtunkhwa, above 64 acres in Sindh, & Balochistan.

Small Farm: Upto 150 goats & sheeps, upto 20 animals for cows & buffaloes upto 50 animals for meat cattle, 5000 birds (broilers), 1000 birds (layers), 2 acres pounds for inland fisheries and one boat exceeding five gross ton capacity for marine fisheries.

Large Farm: Animals in number more than those for Small Farm.

2.9 Land Holding-wise Farm Loan Disbursement

(Amount in Million Rupees)

Period	Size of Farm in Acres						
	Upto 5	5.1 - 12.5	12.6 - 25	25.1 - 50	50.1 - 100	Above 100	Total
FY15							
Q1							
No. of Borrowers	106,509	40,517	12,938	7,855	5,049	2,456	175,324
Amount Disbursed	10,658.57	10,862.03	6,302.52	6,087.23	5,614.00	5,193.89	44,718.24
Q2							
No. of Borrowers	305,655	92,789	20,578	7,788	3,497	727	431,034
Amount Disbursed	21,266.07	15,395.75	9,160.40	6,614.48	6,919.90	6,114.82	65,471.43
Q3							
No. of Borrowers	210,595	79,334	24,910	8,846	4,811	780	329,276
Amount Disbursed	14,561.48	17,866.87	11,358.73	5,935.86	5,874.17	4,185.65	59,782.77
Q4							
No. of Borrowers	318,870	129,670	33,124	10,887	6,067	1,240	499,858
Amount Disbursed	23,854.92	25,561.79	15,166.79	8,241.65	11,045.91	20,473.90	104,344.95
FY16							
Q1							
No. of Borrowers	106,424	42,068	16,359	6,296	4,514	1,027	176,688
Amount Disbursed	10,453.28	9,212.17	6,798.52	3,804.10	6,799.33	2,729.81	39,797.20
Q2							
No. of Borrowers	362,179	83,231	19,140	8,800	5,229	1,134	479,713
Amount Disbursed	24,972.48	15,954.72	9,783.99	6,329.94	8,132.55	17,201.67	82,375.34
Q3							
No. of Borrowers	204,316	63,925	25,022	9,994	5,388	874	309,519
Amount Disbursed	15,777.56	19,594.98	12,039.78	7,061.39	7,228.39	4,231.52	65,933.61
Q4							
No. of Borrowers	379,888	70,287	16,055	7,212	3,959	785	478,186
Amount Disbursed	44,351.15	15,053.38	9,793.74	7,367.22	8,901.25	32,567.54	118,034.29
FY17							
Q1							
No. of Borrowers	125,914	48,063	17,737	7,023	3,934	1,310	203,981
Amount Disbursed	11,551.69	9,433.52	6,776.28	4,173.05	4,626.40	8,119.13	44,680.07
Q2							
No. of Borrowers	440,523	98,645	22,334	7,363	3,760	763	573,388
Amount Disbursed	26,824.31	15,888.48	10,705.72	6,520.96	7,747.60	30,839.87	98,526.93
Q3							
No. of Borrowers	273,474	72,419	26,330	8,142	3,691	929	384,985
Amount Disbursed	19,524.24	19,049.85	12,926.29	6,961.76	6,657.59	23,586.68	88,706.41
Q4							
No. of Borrowers	475,700	91,198	30,995	10,581	4,128	952	613,554
Amount Disbursed	34,868.49	21,501.55	15,520.50	7,794.28	8,518.58	35,711.76	123,915.16

Source: Agricultural Credit & Microfinance Department, SBP

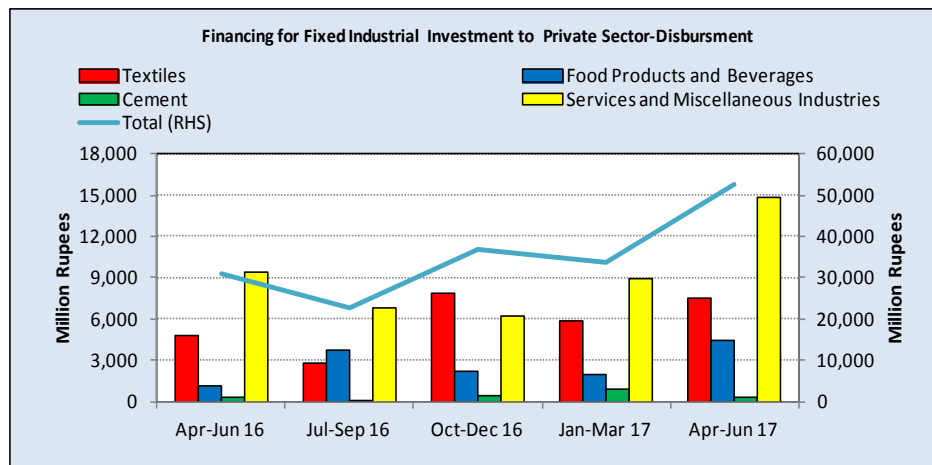
Note: Five Micro Finance Banks (Khushhali, NRSP Microfinance Bank, First Microfinance, PakOman, Tameer) included in FY 12 under category of Upto 5 acres.
Two Microfinance Banks (Waseela & U Microfinance) and Three Islamic Banks (Meezan, Bankislami & Burj) included in FY 2013-14.

2.10 Financing for Fixed Industrial Investment to Private Sector - Disbursement

(Million Rupees)

Industries	Financing					
	Apr-Jun 16	Jul-Sep 16	Oct-Dec 16	Jan-Mar 17	Apr-Jun 17	FY17
Manufacturing	12,479.89	12,943.34	20,162.84	11,051.73	19,210.14	63,368.04
1) Food Products and Beverages	1,190.70	3,727.96	2,215.26	1,906.74	4,453.22	12,303.18
i. Food Products	1,190.70	3,727.96	2,215.26	1,906.74	4,453.22	12,303.18
a. Sugar Industry	692.70	2,501.54	1,820.20	1,453.14	860.75	6,635.64
b. Other Food Industry	498.01	1,226.42	395.06	453.60	3,592.47	5,667.55
ii. Beverages	-	-	-	-	-	-
2) Tobacco	260.00	-	-	-	932.45	932.45
3) Textiles	4,779.91	2,747.75	7,811.01	5,855.15	7,453.32	23,867.23
i. Spinning Textiles	491.02	345.82	3,687.44	2,585.09	2,570.06	9,188.41
ii. Weaving Textiles	449.62	229.53	1,105.69	980.88	1,483.12	3,799.22
iii. Finishing	1,734.33	889.92	1,364.08	712.32	2,313.75	5,280.06
iv. Readymade Garments	475.63	224.73	107.75	162.74	217.03	712.26
v. Others	1,629.31	1,057.75	1,546.05	1,414.11	869.37	4,887.28
4) Tanning and Dressing of Leather	-	-	45.00	-	-	45.00
5) Paper & Paperboard, Printing & Publishing	263.46	291.09	804.72	452.54	265.78	1,814.13
6) Coke & Refined Petroleum	1,289.77	359.44	2,372.76	0.15	130.00	2,862.34
7) Chemical & Chemical Products	2,048.39	5,164.30	4,986.69	286.23	3,098.33	13,535.55
i. Fertilizers and Nitrogen	2,000.00	5,000.00	3,520.60	-	2,000.00	10,520.60
ii. Medicinal & Pharmaceuticals	24.61	67.71	1,258.16	95.19	263.83	1,684.89
iii. Other Chemical And Chemical Products	23.77	96.59	207.94	191.04	834.50	1,330.07
8) Rubber & Plastic Products	467.79	98.42	209.50	522.81	523.94	1,354.67
9) Non-Metallic Mineral Products	273.27	72.40	378.59	911.81	284.83	1,647.63
i. Cement	273.27	65.72	378.59	911.81	284.83	1,640.95
ii. Other Non-Metallic Minerals	-	6.69	-	-	-	6.69
10) Basic Metals	1,191.61	210.95	26.02	240.35	93.61	570.92
11) Fabricated Metal Products Except Machinery & Transport	-	-	-	-	-	-
12) Machinery & Equipment Except Electrical	-	-	-	15.87	-	15.87
13) Electrical Machinery, Apparatus and Office Equipments	27.43	225.72	-	-	-	225.72
14) Electronics Industry	620.56	-	100.00	500.00	1,854.77	2,454.77
15) Transport Industry	-	-	172.35	60.78	72.94	306.07
i. Motor Vehicles, Trailers and Parts & Accessories	-	-	-	-	64.19	64.19
ii. Other Transport Equipment	-	-	172.35	60.78	8.75	241.88
16) Sports Goods	-	-	-	-	-	-
17) Other Manufactured Goods	67.00	45.30	1,040.95	299.30	46.94	1,432.49
Ship Breaking and Waste/Scrap (Junk) etc.	2,681.00	-	-	-	-	-
Electricity, Gas and Water Supply	6,547.49	3,005.53	10,537.74	13,603.87	18,656.88	45,804.02
Services & Miscellaneous Industries	9,410.33	6,746.53	6,200.56	8,896.50	14,855.66	36,699.26
Total	31,118.71	22,695.41	36,901.13	33,552.09	52,722.68	145,871.31

Source: Statistics & Data Warehouse Department, SBP



2.11 Flow of Funds Accounts of Pakistan

Provisional

(Billion Rupees)

Transactions/ Sectors	Overall Domestic Sector		Domestic Economy						Rest of the World	
			General Government		Private sector		Banking ¹			
	FY16	FY17 ^P	FY16	FY17 ^P	FY16	FY17 ^P	FY16	FY17 ^P	FY16	FY17 ^P
Gross national disposable income (GNDI)	30,593.1	33,619.9	3,041.8	3,286.1	27,551.3	30,333.9				
Final consumption	26,573.7	29,862.0	3,287.9	3,786.8	23,285.7	26,075.3				
Gross investment	4,061.1	4,517.0	1,103.2	1,363.1	2,957.9	3,153.9				
Change in Inventories	465.6	509.8			465.6	509.8				
Export of goods and non-factor services									(2,857.2)	(2,851.0)
Imports of goods and non-factor services									5,205.2	6,025.7
Net factor income									2,650.4	2,540.8
Private Transfers									(4,430.2)	(4,393.7)
Official transfers									(60.9)	(53.0)
Non-financial balances (S - I) = CAB³	(507.3)	(1,268.9)	(1,349.3)	(1,863.8)	842.0	594.9			507.3	1,268.9
Foreign financing	459.8	1,242.6	370.5	541.4	284.1	296.0	(194.9)	405.2	(459.8)	(1,242.6)
Non-monetary	654.6	837.4	370.5	541.4	284.1	296.0			(654.6)	(837.4)
Foreign Direct investment (FDI)	240.3	252.4			240.3	252.4			(240.3)	(252.4)
Net foreign borrowing	414.3	585.0	370.5	541.4	43.9	43.6			(414.3)	(585.0)
Monetary	(194.9)	405.2					(194.9)	405.2	194.9	(405.2)
Change in net foreign assets (ΔNFA)	(194.9)	405.2					(194.9)	405.2	194.9	(405.2)
<i>Of which: Valuation changes</i>							(24.0)	(1.0)	24.0	1.0
Domestic financing			983.1	1,363.7	(1,105.8)	(875.9)	122.8	(487.8)		
Monetary			791.3	1,087.1	(914.0)	(599.3)	122.8	(487.8)		
Domestic credit			791.3	1,087.1	628.7	1,157.0	(1,420.0)	(2,244.0)		
Broad money					(1,542.7)	(1,756.2)	1,542.7	1,756.2		
Non-monetary			191.8	276.6	(191.8)	(276.6)				
Non-bank			191.8	276.6	(191.8)	(276.6)				
Net error and omissions/OIN	47.6	26.3	(4.2)	(41.3)	(20.3)	(15.0)	72.1	82.6	(47.6)	(26.3)

Source: Statistics & Data Warehouse Department, SBP

1 For the purpose of flow of funds accounts, banking sector is assumed not to have any nonfinancial transactions - that is, its saving-investment gap is identically equal to zero.

2 Budgetary support including accrued interest

3 CAB: Current Account Balance

Inter-Sectoral Financial Assets Flow FY17

