

SUMMARY

Table 1(a) : Monthly Import of Goods & Services (Million US\$)

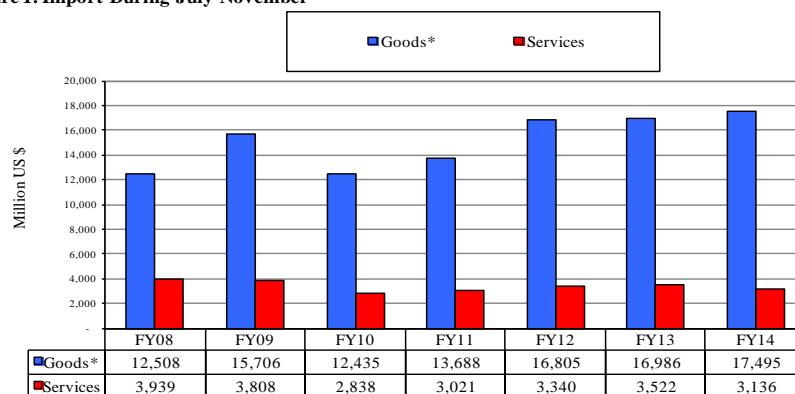
Items	November	
	2013	2012
I. Import Payments (Banks)	3,119	3,320
II. Freight & Insurance	187	199
III. Other Import unaccounted by Banks	236	278
Unclassified Imports	49	1
Imports NRI, Sale of Duty Free Shops	9	37
Imports under Foreign Economic Assistance	141	218
Land borne Imports with Afghanistan	19	13
PIA & PNSC	8	7
Capital Equipment	0	0
Cost of Imports (Ex. Cos.)	0	0
Refund & Rebate	-7	-7
Import from EPZ	0	0
Import from Accounts Abroad	0	3
Private Donations in Kind	18	8
(A) Import General Merchandise (I-II+III)	3,168	3,398
(B) Other Import under BPM5*	38	33
(C) Import of Goods (A+B)	3,205	3,432
(D) Import of Services	627	689
(E) Import of Goods & Services (C+D)	3,833	4,121

* See "Introduction" for details:

Table 1(b) : Key Indicators of Import of Goods and Services (Million US\$)

November 2013	3,833
October 2013	4,280
% Change during October 2013 over September 2013	-10.4
November 2012	4,121
% Change during November 2013 over November 2012	-7.0
July-Nov 2013-14	20,631
July-Nov 2012-13	20,508
% Change during July-Nov 2013-14 over July-Nov 2012-13	0.6
Monthly average during July-November 2013-14	4,126
Monthly average during July-November 2012-13	4,102
FY13	48,401
FY12	48,688
% Change during FY13 over FY12	-0.6
Monthly average during FY13	4,033
Monthly average during FY12	4,057

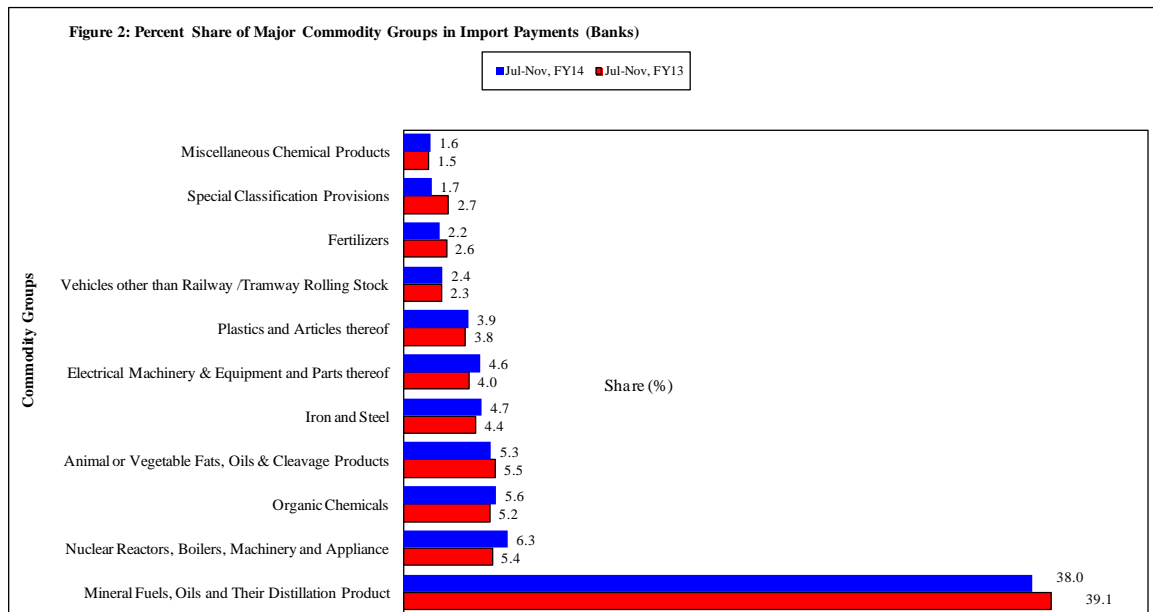
Figure 1. Import During July-November



*The data is import of goods based on Balance of Payments Manual 5 (BPM 5).

Table 2: Import Payments by Major Groups of Goods & Services (Amount in Million)

Goods/ Services	November			July- November		
	2013	2013	2012	2013	2012	% Change
	Pak Rs.	US \$				
Goods						
I. Import Payments (Banks)	335,281	3,119	3,320	17,450	16,499	5.8
Mineral Fuels, Oils and Their Distillation Product	128,687	1,197	1,356	6,630	6,459	2.6
Nuclear Reactors, Boilers, Machinery and Appliance	21,595	201	169	1,096	886	23.7
Organic Chemicals	18,641	173	184	978	862	13.4
Animal or Vegetable Fats, Oils & Cleavage Products	19,350	180	156	924	915	1.0
Iron and Steel	16,962	158	108	823	720	14.3
Electrical Machinery & Equipment and Parts thereof	13,221	123	143	810	654	23.9
Plastics and Articles thereof	12,129	113	111	682	619	10.2
Vehicles other than Railway /Tramway Rolling Stock	6,775	63	61	413	379	8.8
Fertilizers	5,312	49	52	378	427	-11.4
Special Classification Provisions	4,720	44	94	298	453	-34.3
Miscellaneous Chemical Products	8,984	84	57	285	253	12.8
Optical, Photographic, Measuring and Medical Inst.	5,105	47	41	263	172	53.4
Ships, Boats and Floating Structures	3,325	31	67	247	269	-8.0
Oil Seeds and Oleaginous Fruit	5,948	55	35	230	250	-7.8
Man-Made Filaments	4,747	44	51	229	217	5.8
Man-Made Staple Fibers	4,426	41	46	223	229	-2.7
Paper and Paperboard, Articles of Paper Pulp	4,068	38	42	196	185	6.1
Cotton	3,768	35	55	195	262	-25.5
All Other	47,519	442	493	2,550	2,291	11.3
II. Freight & Insurance	20,117	187	199	1,047	990	5.8
III. Other Import Unaccounted by Banks	25,339	236	278	953	1,270	-25.0
(A) Import General Merchandise (I-II+III)	340,503	3,168	3,398	17,356	16,780	3.4
(B) Other Import Under BPM5*	4,031	38	33	139	206	-32.7
(C) Import of Goods (A+B)	344,535	3,205	3,432	17,495	16,986	3.0
Services						
Transportation	27,394	256	280	1,380	1,409	-2.0
Other Business Services	16,439	153	158	571	781	-26.9
Travel	8,627	80	107	456	579	-21.2
Government Services	5,452	51	79	318	377	-15.7
Insurance Services	1,697	16	24	104	106	-1.0
Communication Services	2,688	25	8	92	66	38.2
Financial Services	1,803	17	7	89	49	83.5
Computer & Information Services	1,410	13	13	62	87	-28.6
Royalties & License fees	1,448	13	13	53	65	-18.8
Construction Services	314	3	0	9	2	273.2
Personal, cultural & recreational Services	21	0	0	2	1	58.6
(D) Import of Services	67,294	627	689	3,136	3,522	-11.0
(E) Import of Goods & Services (C+D)	411,829	3,833	4,121	20,631	20,508	0.6



Note: - The share is based on the share of commodities in Import Payments through Banks.

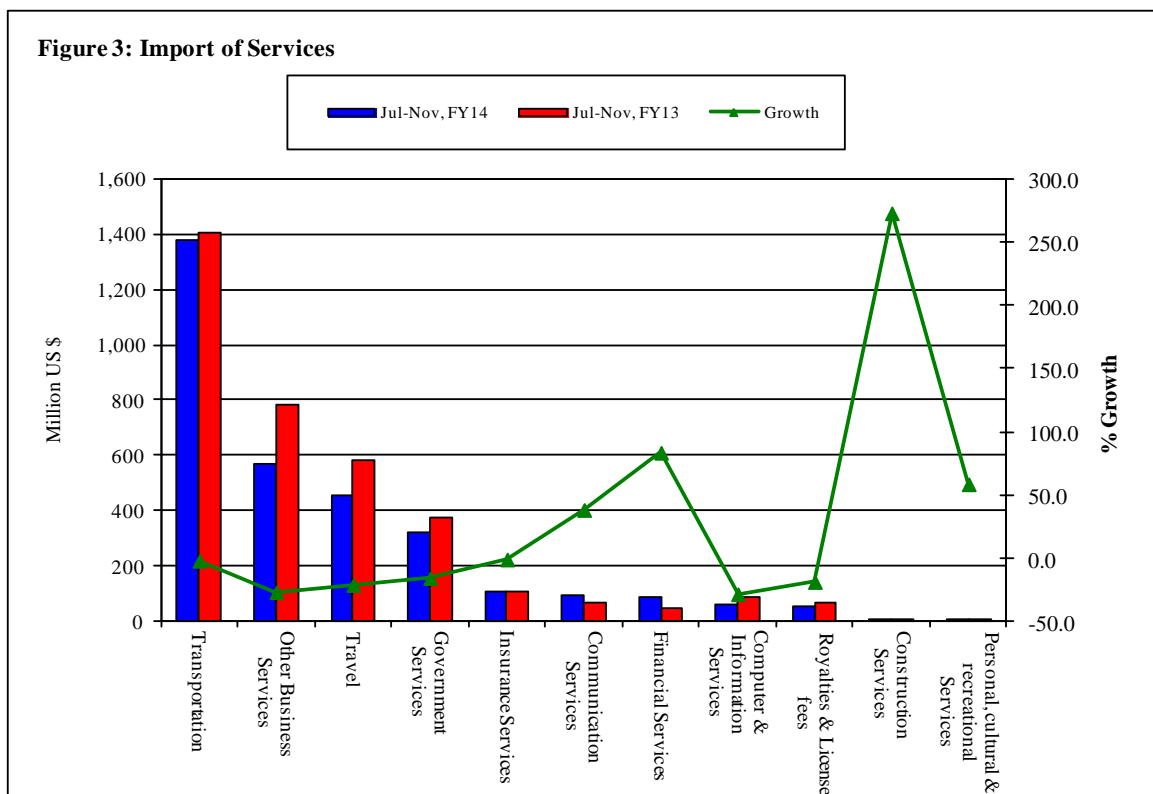
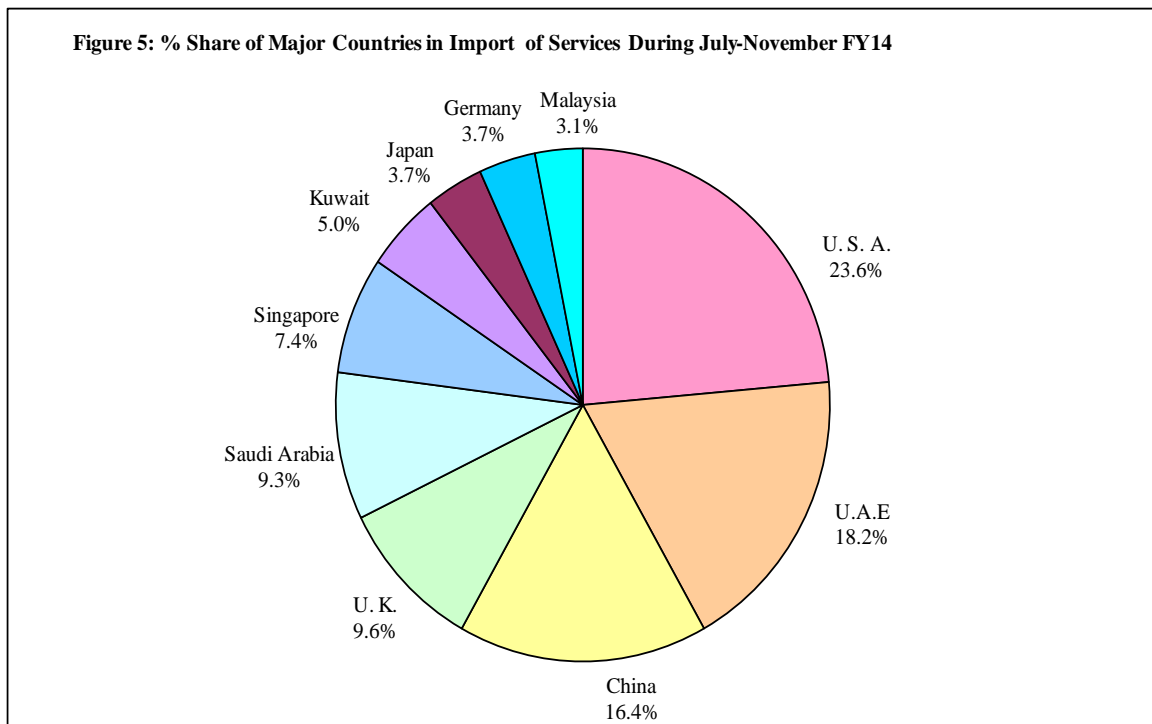
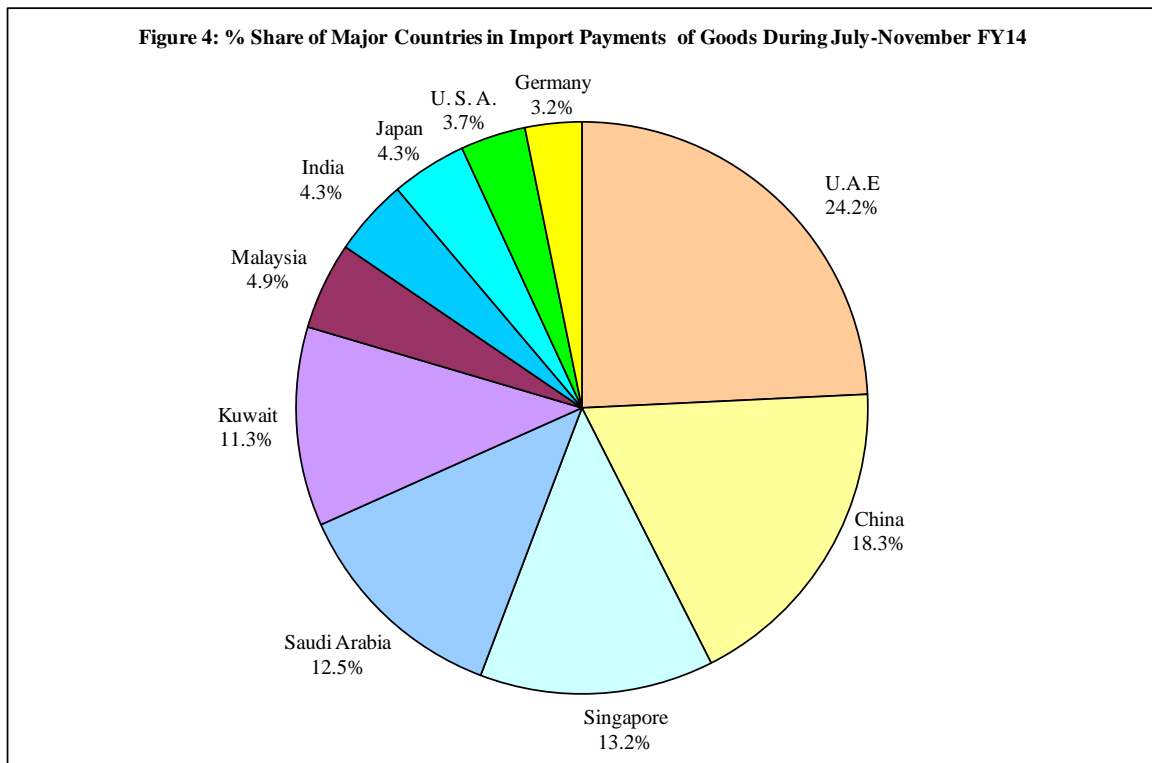


Table 3: Import of Goods & Services by Major Countries

(Amount in Millions)

Country	November			July-November		
	2013	2013	2012	2013	2012	% Change
	Pak Rs.	US \$				
Goods						
I. Total Import Payments (Banks)	335,281	3,119	3,320	17,450	16,499	5.8
U.A.E	60,661	564	482	3,146	2,677	17.6
China	43,049	401	391	2,374	1,860	27.6
Singapore	36,959	344	161	1,718	1,248	37.6
Saudi Arabia	24,647	229	477	1,628	1,700	-4.3
Kuwait	31,689	295	348	1,462	1,527	-4.3
Malaysia	12,726	118	159	641	721	-11.1
India	11,860	110	122	562	511	9.8
Japan	8,944	83	104	555	574	-3.3
U. S. A.	10,307	96	70	479	331	44.5
Germany	7,838	73	89	416	424	-2.1
U. K.	4,123	38	81	337	409	-17.5
Switzerland	9,235	86	99	331	452	-26.8
Oman	6,282	58	77	309	260	18.8
Indonesia	7,324	68	76	297	306	-2.9
Thailand	5,308	49	44	276	215	28.3
All Others	54,329	506	542	2,921	3,283	-11.0
II. Freight & Insurance	20,117	187	199	1,047	990	5.8
III. Other Import Unaccounted by Banks	25,339	236	278	953	1,270	-25.0
(A) Import General Merchandise (I-II+III)	340,503	3,168	3,398	17,356	16,780	3.4
(B) Other Import under BPM5*	4,031	38	33	139	206	-32.7
(C) Import of Goods (A+B)	344,535	3,205	3,432	17,495	16,986	3.0
Services						
U. S. A.	12,020	112	80	442	402	10.1
U.A.E	7,770	73	48	342	269	27.0
China	8,459	79	49	307	208	47.5
U. K.	3,208	30	36	180	213	-15.4
Saudi Arabia	3,014	28	42	174	211	-17.5
Singapore	3,020	28	17	138	105	31.9
Kuwait	2,000	19	23	94	102	-8.0
Japan	1,333	12	13	70	68	2.9
Germany	1,638	15	13	70	80	-12.1
Malaysia	1,002	9	12	59	54	8.2
Hong Kong	1,203	11	7	50	34	48.1
Thailand	1,267	12	4	42	14	197.7
India	806	8	8	38	34	11.5
Switzerland	940	9	8	38	44	-13.3
Canada	409	4	4	30	23	31.0
All Other	19,206	179	325	1,061	1,661	-36.1
(D) Total Import of Services	67,294	627	689	3,136	3,522	-11.0
Total Import of Goods & Services (C+D)	411,829	3,833	4,121	20,631	20,508	0.6



Note: % Share is based on Import Payments through Banks

Figure 6: Annual Import of Goods & Services from FY02 to FY13

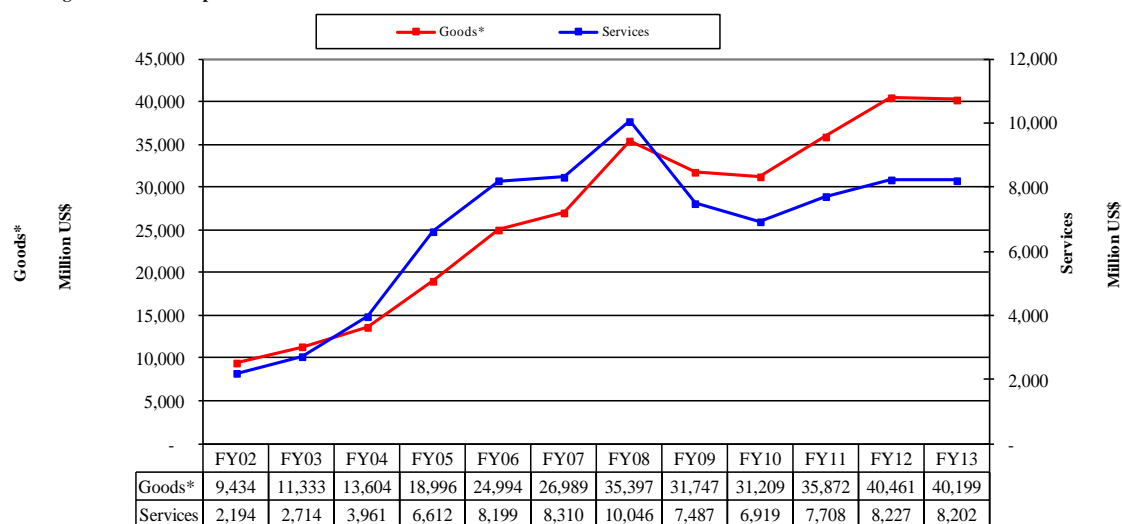
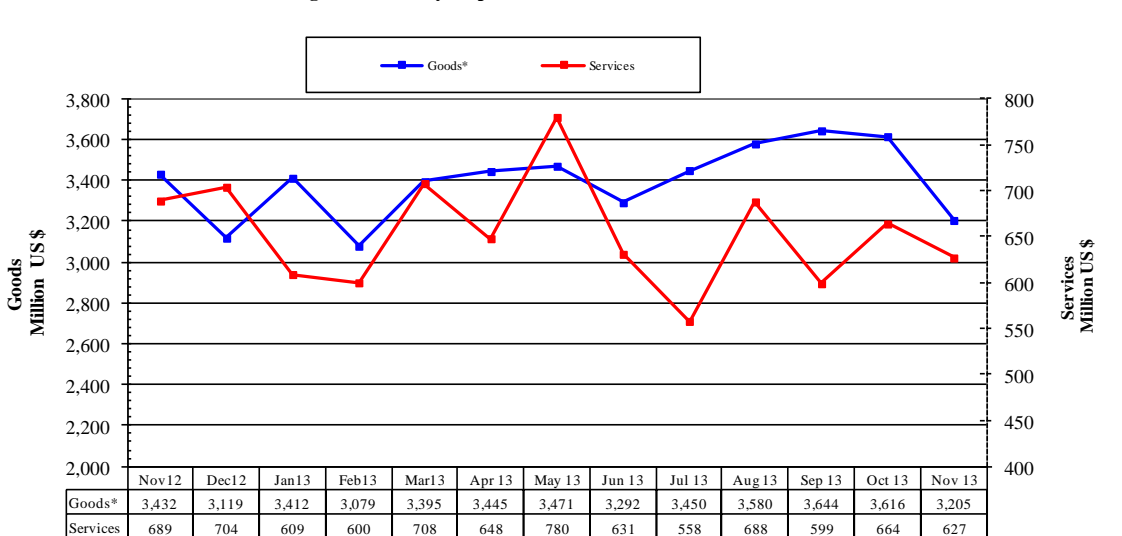


Figure 7: Monthly Imports of Goods & Services



* The data before FY05 is import general merchandise based on Balance of Payments Manual 4 (BPM 4) and onward on Balance of Payments Manual 5 (BPM 5).

Table 4: Annual, Quarterly & Monthly Import of Goods*

(Million US\$)

Period	FY05	FY06	FY07	FY08	FY09	FY10	FY11	FY12	FY13	FY14
Annual	18,996	24,994	26,989	35,395	31,746	31,209	35,872	40,461	40,199	
Growth (%)	39.6	31.6	8.0	31.2	-10.3	-1.7	14.9	12.8	-0.6	
<u>Quarter-wise</u>										
Quarter-I	4,175 (22.0)	5,925 (23.7)	6,933 (25.7)	6,939 (19.6)	10,229 (32.2)	7,485 (24.0)	8,257 (23.0)	10,390 (25.7)	9,809 (24.4)	10,674
Quarter-II	5,047 (26.6)	6,074 (24.3)	6,768 (25.1)	8,548 (24.1)	8,077 (25.4)	7,691 (24.6)	8,627 (24.0)	9,699 (24.0)	10,296 (25.6)	
Quarter-III	4,801 (25.3)	6,261 (25.1)	6,454 (23.9)	9,765 (27.6)	6,275 (19.8)	7,367 (23.6)	9,165 (25.5)	10,082 (24.9)	9,886 (24.6)	
Quarter-IV	4,973 (26.2)	6,734 (26.9)	6,834 (25.3)	10,144 (28.7)	7,165 (22.6)	8,666 (27.8)	9,823 (27.4)	10,290 (25.4)	10,208 (25.4)	
<u>Month-wise</u>										
July	1,440 (7.6)	1,772 (7.1)	2,418 (9.0)	2,411 (6.8)	3,373 (10.6)	2,818 (9.0)	2,925 (8.2)	3,179 (7.9)	3,461 (8.6)	3,450 (19.7)
August	1,311 (6.9)	2,087 (8.4)	2,308 (8.6)	2,259 (6.4)	3,162 (10.0)	2,189 (7.0)	2,933 (8.2)	3,674 (9.1)	3,248 (8.1)	3,580 (20.5)
September	1,424 (7.5)	2,066 (8.3)	2,207 (8.2)	2,269 (6.4)	3,694 (11.6)	2,478 (7.9)	2,399 (6.7)	3,537 (8.7)	3,100 (7.7)	3,644 (20.8)
October	1,616 (8.5)	2,055 (8.2)	2,205 (8.2)	2,604 (7.4)	3,243 (10.2)	2,756 (8.8)	2,620 (7.3)	3,237 (8.0)	3,745 (9.3)	3,616 (20.7)
November	1,745 (9.2)	2,059 (8.2)	2,161 (8.0)	2,963 (8.4)	2,233 (7.0)	2,194 (7.0)	2,811 (7.8)	3,178 (7.9)	3,432 (8.5)	3,205 (18.3)
December	1,686 (8.9)	1,960 (7.8)	2,402 (8.9)	2,980 (8.4)	2,601 (8.2)	2,741 (8.8)	3,196 (8.9)	3,284 (8.1)	3,119 (7.8)	
January	1,427 (7.5)	2,070 (8.3)	2,105 (7.8)	3,329 (9.4)	2,140 (6.7)	2,536 (8.1)	2,797 (7.8)	3,374 (8.3)	3,412 (8.5)	
February	1,591 (8.4)	1,886 (7.5)	2,226 (8.2)	2,913 (8.2)	1,884 (5.9)	2,345 (7.5)	3,076 (8.6)	3,713 (9.2)	3,079 (7.7)	
March	1,783 (9.4)	2,305 (9.2)	2,123 (7.9)	3,523 (10.0)	2,251 (7.1)	2,486 (8.0)	3,292 (9.2)	2,995 (7.4)	3,395 (8.4)	
April	1,508 (7.9)	1,682 (6.7)	2,185 (8.1)	3,391 (9.6)	2,370 (7.5)	2,916 (9.3)	2,910 (8.1)	3,166 (7.8)	3,445 (8.6)	
May	1,741 (9.2)	2,361 (9.4)	2,214 (8.2)	3,246 (9.2)	2,002 (6.3)	2,638 (8.5)	3,359 (9.4)	3,467 (8.6)	3,471 (8.6)	
June	1,724 (9.1)	2,691 (10.8)	2,435 (9.0)	3,507 (9.9)	2,793 (8.8)	3,112 (10.0)	3,554 (9.9)	3,657 (9.0)	3,292 (8.2)	

Notes: 1. Figures in parentheses are percentage to annual import payments of the respective years

2. Due to rounding off separate items, totals may show minor differences

* The data before FY05 is import general merchandise based on Balance of Payments Manual 4 (BPM 4) and onward on Balance of Payments Manual 5 (BPM 5).

Table 5: Annual, Quarterly & Monthly Import of Services

(Million US\$)

Period	FY05	FY06	FY07	FY08	FY09	FY10	FY11	FY12	FY13	FY14
Annual	6,612	8,199	8,310	10,046	7,487	6,919	7,708	8,227	8,202	
Growth (%)	66.9	24.0	1.4	20.9	-25.5	-7.6	11.4	6.7	-0.3	
<u>Quarter-wise</u>										
Quarter-I	1,449 (21.9)	1,953 (23.8)	2,039 (24.5)	2,194 (21.8)	2,392 (31.9)	1,585 (22.9)	1,722 (22.3)	1,976 (24.0)	2,028 (24.7)	1,845
Quarter-II	1,669 (25.2)	2,061 (25.1)	2,193 (26.4)	2,548 (25.4)	2,021 (27.0)	1,892 (27.3)	1,941 (25.2)	2,059 (25.0)	2,198 (26.8)	
Quarter-III	1,764 (26.7)	2,061 (25.1)	2,014 (24.2)	2,569 (25.6)	1,389 (18.6)	1,582 (22.9)	1,837 (23.8)	1,959 (23.8)	1,917 (23.4)	
Quarter-IV	1,730 (26.2)	2,124 (25.9)	2,064 (24.8)	2,735 (27.2)	1,685 (22.5)	1,860 (26.9)	2,208 (28.6)	2,233 (27.1)	2,059 (25.1)	
<u>Month-wise</u>										
July	432 (6.5)	573 (7.0)	735 (8.8)	755 (7.5)	743 (9.9)	568 (8.2)	565 (7.3)	627 (7.6)	654 (8.0)	558 (17.8)
August	473 (7.2)	735 (9.0)	619 (7.4)	757 (7.5)	816 (10.9)	489 (7.1)	561 (7.3)	617 (7.5)	703 (8.6)	688 (21.9)
September	544 (8.2)	645 (7.9)	685 (8.2)	682 (6.8)	833 (11.1)	528 (7.6)	596 (7.7)	732 (8.9)	671 (8.2)	599 (19.1)
October	525 (7.9)	626 (7.6)	645 (7.8)	782 (7.8)	839 (11.2)	691 (10.0)	702 (9.1)	712 (8.7)	805 (9.8)	664 (21.2)
November	489 (7.4)	674 (8.2)	782 (9.4)	963 (9.6)	577 (7.7)	562 (8.1)	597 (7.7)	652 (7.9)	689 (8.4)	627 (20.0)
December	655 (9.9)	761 (9.3)	766 (9.2)	803 (8.0)	605 (8.1)	639 (9.2)	642 (8.3)	695 (8.4)	704 (8.6)	
January	539 (8.2)	672 (8.2)	683 (8.2)	894 (8.9)	448 (6.0)	500 (7.2)	583 (7.6)	636 (7.7)	609 (7.4)	
February	561 (8.5)	622 (7.6)	633 (7.6)	751 (7.5)	458 (6.1)	495 (7.2)	570 (7.4)	656 (8.0)	600 (7.3)	
March	664 (10.0)	767 (9.4)	698 (8.4)	924 (9.2)	483 (6.5)	587 (8.5)	684 (8.9)	667 (8.1)	708 (8.6)	
April	610 (9.2)	617 (7.5)	680 (8.2)	999 (9.9)	542 (7.2)	618 (8.9)	642 (8.3)	639 (7.8)	648 (7.9)	
May	582 (8.8)	744 (9.1)	657 (7.9)	797 (7.9)	523 (7.0)	582 (8.4)	751 (9.7)	734 (8.9)	780 (9.5)	
June	538 (8.1)	763 (9.3)	727 (8.7)	939 (9.3)	620 (8.3)	660 (9.5)	815 (10.6)	860 (10.5)	631 (7.7)	

Notes: 1. Figures in parentheses are percentage to annual import payments of the respective years

2. Due to rounding off separate items, totals may show minor differences