

SUMMARY

Table 1(a) : Monthly Import of Goods & Services

(Million US\$)

Items	May	
	2013	2012
I. Import Payments (Banks)	3,421	3,356
II. Freight & Insurance	205	201
III. Other Import unaccounted by Banks	110	268
Unclassified Imports	52	9
Imports NRI, Sale of Duty Free Shops	12	41
Imports under Foreign Economic Assistance	11	174
Land borne Imports with Afghanistan	18	13
PIA & PNSC	3	13
Capital Equipment	0	0
Cost of Imports (Ex. Cos.)	0	0
Refund & Rebate	-10	-10
Import from EPZ	0	0
Import from Accounts Abroad	0	2
Private Donations in Kind	25	27
(A) Import General Merchandise (I-II+III)	3,326	3,423
(B) Other Import under BPM5*	27	44
(C) Import of Goods (A+B)	3,353	3,467
(D) Import of Services	727	734
(E) Import of Goods & Services (C+D)	4,079	4,201

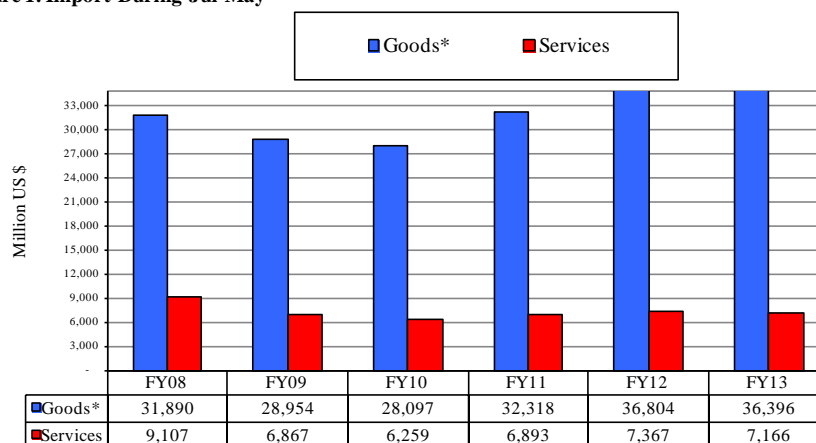
* See "Introduction" for details:

Table 1(b) : Key Indicators of Import of Goods and Services

(Million US\$)

May 2013	4,079
April 2013	4,088
% Change during May 2013 over April 2013	-0.2
May 2012	4,201
% Change during May 2013 over May 2012	-2.9
July-May 2012-13	43,562
July-May 2011-12	44,171
% Change during July-May 2012-13 over July-May 2011-12	-1.4
Monthly average during July-May 2012-13	3,960
Monthly average during July-May 2011-12	4,016
FY12	48,688
FY11	43,580
% Change during FY12 over FY11	11.7
Monthly average during FY12	4,057
Monthly average during FY11	3,632

Figure 1. Import During Jul-May



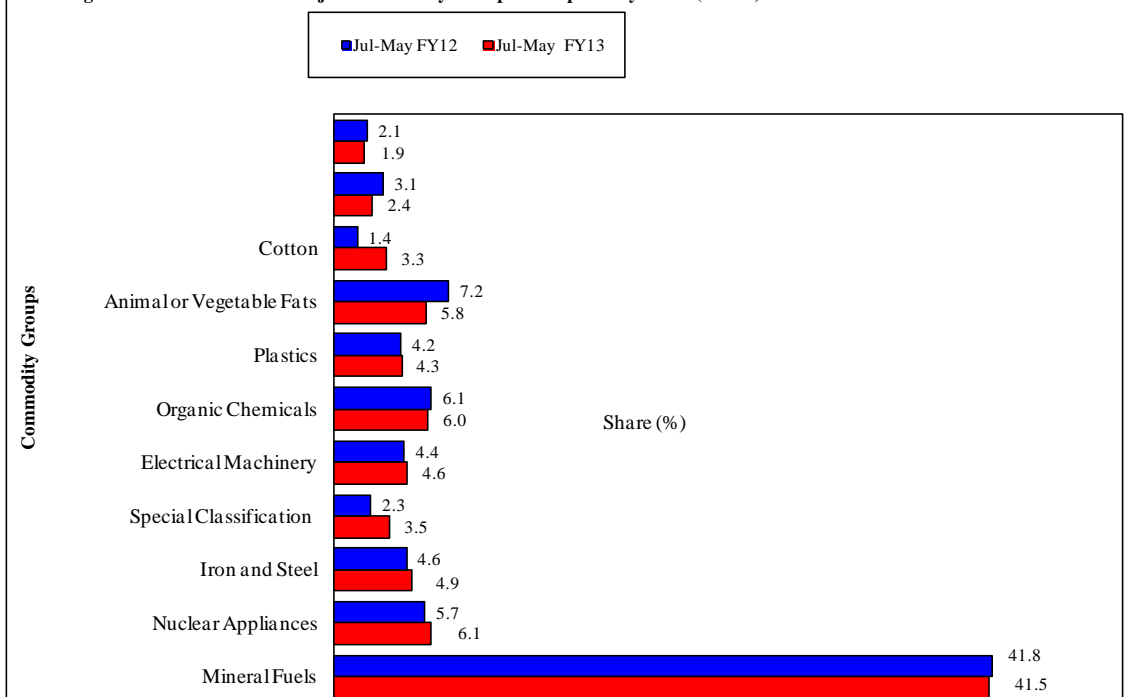
*The data is import of goods based on Balance of Payments Manual 5 (BPM 5).

Table 2: Import Payments by Major Groups of Goods & Services

(Amount in Million)

Goods/ Services	May			July- May		
	2013	2013	2012	2013	2012	%
	Pak Rs.			US \$		Change
Goods						
I. Import Payments (Banks)	336,507	3,421	3,356	36,100	36,143	-0.1
Mineral Fuels, Oils and Their Distillation Product	133,174	1,354	1,224	13,573	13,693	-0.9
Nuclear Reactors, Boilers, Machinery and Appliance	18,714	190	214	1,983	1,881	5.4
Iron and Steel	17,015	173	155	1,597	1,493	7.0
Special Classification Provisions	16,286	166	69	1,140	758	50.4
Electrical Machinery & Equipment and Parts thereof	14,333	146	148	1,514	1,458	3.9
Organic Chemicals	13,992	142	186	1,945	2,015	-3.5
Plastics and Articles thereof	12,604	128	143	1,392	1,383	0.6
Animal or Vegetable Fats, Oils & Cleavage Products	12,332	125	247	1,899	2,377	-20.1
Cotton	8,750	89	60	1,080	470	129.8
Vehicles other than Railway /Tramway Rolling Stock	7,815	79	96	792	1,013	-21.9
Ships, Boats and Floating Structures	6,758	69	74	613	682	-10.0
Miscellaneous Chemical Products	4,720	48	51	537	510	5.4
Organic or Inorganic Compounds of Precious Metals	4,628	47	35	458	450	1.8
Optical, Photographic, Measuring and Medical Inst.	4,568	46	28	346	286	20.9
Man-Made Filaments	4,566	46	46	484	504	-4.0
Paper and Paperboard, Articles of Paper Pulp	4,481	46	46	428	420	1.8
Rubbers and Articles thereof	4,240	43	36	371	377	-1.6
Man-Made Staple Fibers	3,585	36	57	511	553	-7.7
All Other	43,947	447	442	5,438	5,819	-6.5
II. Freight & Insurance	20,190	205	201	2,166	2,169	-0.1
III. Other Import Unaccounted by Banks	8,352	110	268	2,124	2,385	-11.0
(A) Import General Merchandise (I-II+III)	324,668	3,326	3,423	36,058	36,360	-0.8
(B) Other Import Under BPM5*	2,656	27	44	338	444	-23.9
(C) Import of Goods (A+B)	327,324	3,353	3,467	36,396	36,804	-1.1
Services						
Transportation	25,638	261	277	2,884	3,213	-10.2
Other Business Services	18,067	184	169	1,453	1,383	5.1
Travel	8,876	90	142	1,159	1,229	-5.7
Government Services	7,944	81	76	802	743	7.9
Communication Services	3,046	31	10	180	150	20.6
Computer & Information Services	2,353	24	15	189	150	25.9
Insurance Services	2,293	23	21	242	223	8.8
Financial Services	1,793	18	10	112	99	12.9
Royalties & License fees	1,306	13	13	131	121	8.4
Personal, cultural & recreational Services	91	1	1	3	3	-9.6
Construction Services	77	1	0	10	53	-81.2
(D) Import of Services	71,484	727	734	7,166	7,367	-2.7
(E) Import of Goods & Services (C+D)	398,809	4,079	4,201	43,562	44,171	-1.4

Figure 2: Percent Share of Major Commodity Groups in Import Payments (Banks)



Note: - The share is based on the share of commodities in Import Payments through Banks.

Figure 3: Import of Services

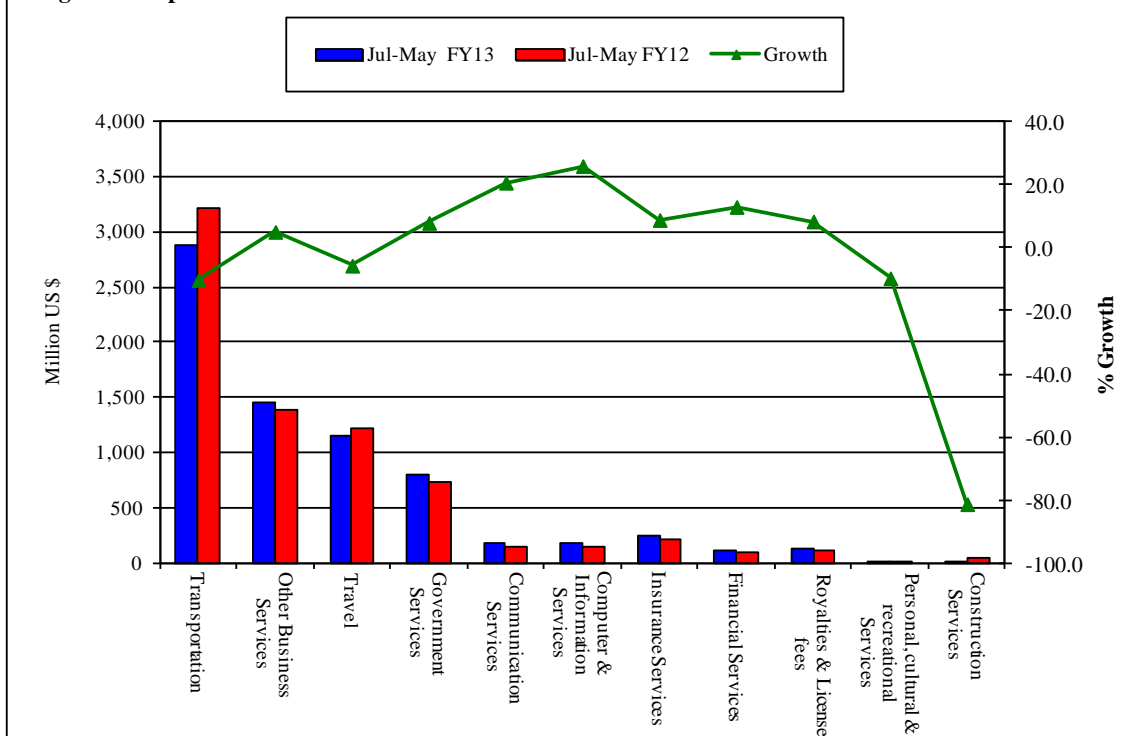
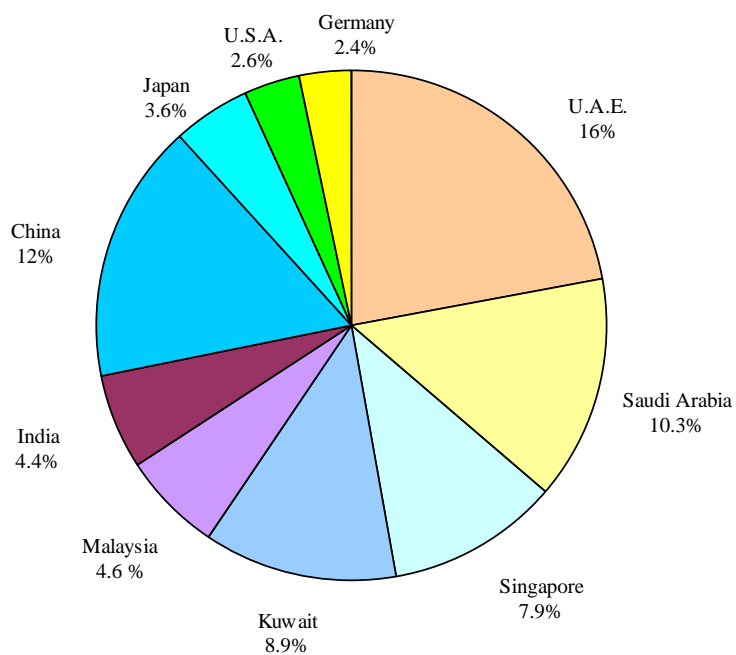
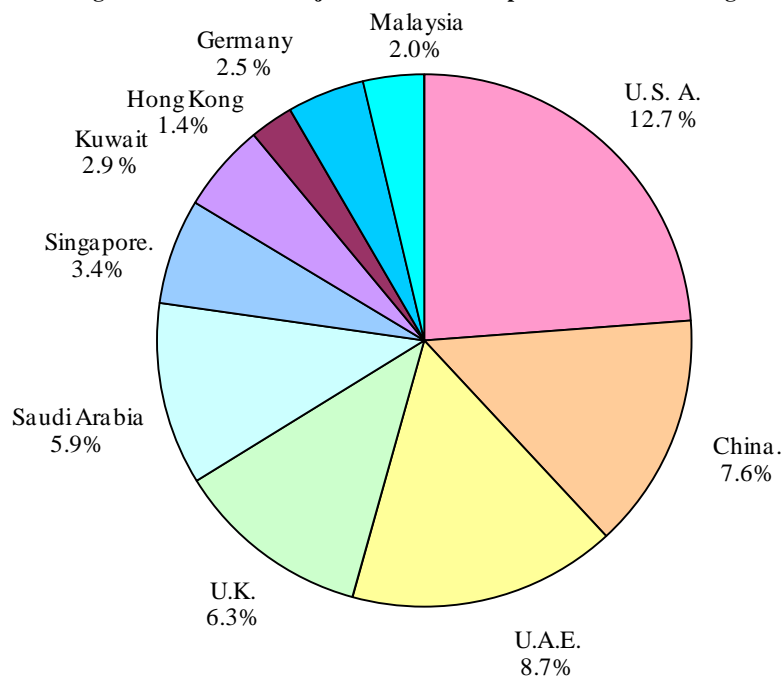


Table 3: Import of Goods & Services by Major Countries

(Amount in Millions)

Country	May			July-May		
	2013	2013	2012	2013	2012	% Change
	Pak Rs.	US \$				
Goods						
I. Total Import Payments (Banks)	336,507	3,421	3,356	36,100	36,143	-0.12
U.A.E.	49,934	508	738	5,789	6,078	-4.77
China	46,597	474	380	4,316	3,821	12.96
Saudi Arabia	36,505	371	336	3,729	4,463	-16.45
Singapore	36,443	370	191	2,862	2,512	13.96
Kuwait	32,933	335	289	3,217	3,391	-5.14
Malaysia	15,231	155	224	1,668	1,939	-13.96
India	12,278	125	106	1,577	1,145	37.75
Japan	10,871	111	120	1,289	1,424	-9.48
U. S. A.	8,565	87	71	925	728	27.11
Germany	6,675	68	82	864	1,091	-20.80
Indonesia	5,130	52	83	654	601	8.78
Thailand	5,104	52	52	496	536	-7.48
U. K.	4,921	50	62	760	601	26.46
South Korea	4,562	46	59	523	598	-12.47
Hong Kong	4,344	44	55	470	470	0.01
All Others	56,414	573	509	6,962	6,746	3.19
II. Freight & Insurance	20,190	205	201	2,166	2,169	-0.12
III. Other Import Unaccounted by Banks	8,352	110	268	2,124	2,385	-10.96
(A) Import General Merchandise (I-II+III)	324,668	3,326	3,423	36,058	36,360	-0.83
(B) Other Import under BPM5*	2,656	27	44	338	444	-23.91
(C) Import of Goods (A+B)	327,324	3,353	3,467	36,396	36,804	-1.11
Services						
U. S. A.	8,503	86	67	910	809	12.49
China	8,053	82	84	545	597	-8.58
U.A.E.	7,872	80	59	622	717	-13.17
U. K.	6,003	61	44	453	439	3.18
Saudi Arabia	4,764	48	43	423	459	-7.98
Singapore	3,183	32	16	244	230	6.12
Kuwait	2,221	23	19	204	225	-9.31
Hon Kong	2,055	21	6	101	97	4.67
Germany	1,490	15	11	179	174	2.79
Malaysia	1,175	12	16	141	152	-6.97
Australia	1,098	11	6	83	60	38.20
Japan	1,072	11	19	154	220	-29.96
Bhutan	926	9	0	10	0	11,187.22
Norway	917	9	1	32	26	21.69
Switzerland	800	8	7	91	128	-28.79
All Other	21,353	217	335	2,974	3,035	-2.01
(D) Total Import of Services	71,484	727	734	7,166	7,367	-2.72
Total Import of Goods & Services (C+D)	398,809	4,079	4,201	43,562	44,171	-1.38

Figure 4: % Share of Major Countries in Import Payments of Goods During Jul -May FY13**Figure 5: % Share of Major Countries in Import of Services During Jul-May FY13**

Note: % Share is based on Import Payments through Banks

Figure 6: Annual Import of Goods & Services from FY03 to FY12

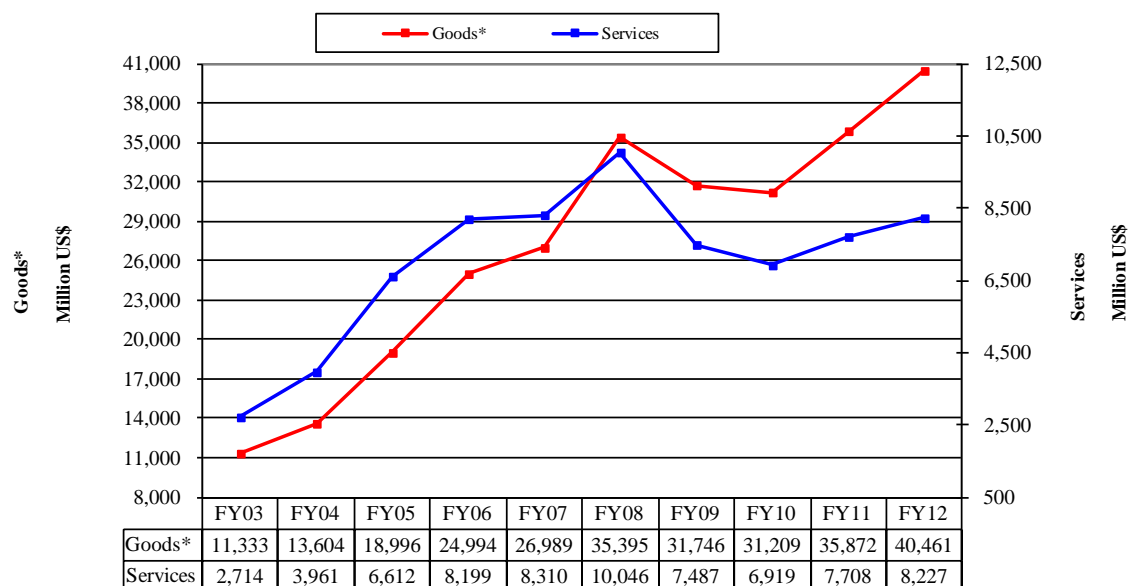


Figure 7: Monthly Imports of Goods & Services



* The data before FY05 is import general merchandise based on Balance of Payments Manual 4 (BPM 4) and onward on Balance of Payments Manual 5 (BPM 5).

Table 4: Annual, Quarterly & Monthly Import of Goods*

(Million US\$)

Period	FY04	FY05	FY06	FY07	FY08	FY09	FY10	FY11	FY12	FY13
Annual	13,604	18,996	24,994	26,989	35,395	31,746	31,209	35,872	40,461	
Growth (%)	20.0	39.6	31.6	8.0	31.2	-10.3	-1.7	14.9	12.8	
<u>Quarter-wise</u>										
Quarter-I	3,014 (22.2)	4,175 (22.0)	5,925 (23.7)	6,933 (25.7)	6,939 (19.6)	10,229 (32.2)	7,485 (24.0)	8,257 (23.0)	10,390 (25.7)	9,658
Quarter-II	3,204 (23.6)	5,047 (26.6)	6,074 (24.3)	6,768 (25.1)	8,548 (24.1)	8,077 (25.4)	7,691 (24.6)	8,627 (24.0)	9,699 (24.0)	10,136
Quarter-III	3,602 (26.5)	4,801 (25.3)	6,261 (25.1)	6,454 (23.9)	9,765 (27.6)	6,275 (19.8)	7,367 (23.6)	9,165 (25.5)	10,082 (24.9)	9,790
Quarter-IV	3,784 (27.8)	4,973 (26.2)	6,734 (26.9)	6,834 (25.3)	10,144 (28.7)	7,165 (22.6)	8,666 (27.8)	9,823 (27.4)	10,290 (25.4)	
<u>Month-wise</u>										
July	1,020 (7.5)	1,440 (7.6)	1,772 (7.1)	2,418 (9.0)	2,411 (6.8)	3,373 (10.6)	2,818 (9.0)	2,925 (8.2)	3,179 (7.9)	3,430
August	930 (6.8)	1,311 (6.9)	2,087 (8.4)	2,308 (8.6)	2,259 (6.4)	3,162 (10.0)	2,189 (7.0)	2,933 (8.2)	3,674 (9.1)	3,222
September	1,064 (7.8)	1,424 (7.5)	2,066 (8.3)	2,207 (8.2)	2,269 (6.4)	3,694 (11.6)	2,478 (7.9)	2,399 (6.7)	3,537 (8.7)	3,006
October	1,057 (7.8)	1,616 (8.5)	2,055 (8.2)	2,205 (8.2)	2,604 (7.4)	3,243 (10.2)	2,756 (8.8)	2,620 (7.3)	3,237 (8.0)	3,690
November	876 (6.4)	1,745 (9.2)	2,059 (8.2)	2,161 (8.0)	2,963 (8.4)	2,233 (7.0)	2,194 (7.0)	2,811 (7.8)	3,178 (7.9)	3,365
December	1,271 (9.3)	1,686 (8.9)	1,960 (7.8)	2,402 (8.9)	2,980 (8.4)	2,601 (8.2)	2,741 (8.8)	3,196 (8.9)	3,284 (8.1)	3,081
January	1,168 (8.6)	1,427 (7.5)	2,070 (8.3)	2,105 (7.8)	3,329 (9.4)	2,140 (6.7)	2,536 (8.1)	2,797 (7.8)	3,374 (8.3)	3,398
February	1,212 (8.9)	1,591 (8.4)	1,886 (7.5)	2,226 (8.2)	2,913 (8.2)	1,884 (5.9)	2,345 (7.5)	3,076 (8.6)	3,713 (9.2)	3,041
March	1,222 (9.0)	1,783 (9.4)	2,305 (9.2)	2,123 (7.9)	3,523 (10.0)	2,251 (7.1)	2,486 (8.0)	3,292 (9.2)	2,995 (7.4)	3,380
April	1,230 (9.0)	1,508 (7.9)	1,682 (6.7)	2,185 (8.1)	3,391 (9.6)	2,370 (7.5)	2,916 (9.3)	2,910 (8.1)	3,166 (7.8)	3,430
May	1,166 (8.6)	1,741 (9.2)	2,361 (9.4)	2,214 (8.2)	3,246 (9.2)	2,002 (6.3)	2,638 (8.5)	3,359 (9.4)	3,467 (8.6)	3,353
June	1,388 (10.2)	1,724 (9.1)	2,691 (10.8)	2,435 (9.0)	3,507 (9.9)	2,793 (8.8)	3,112 (10.0)	3,554 (9.9)	3,657 (9.0)	

Notes: 1. Figures in parentheses are percentage to annual import payments of the respective years

2. Due to rounding off separate items, totals may show minor differences

* The data before FY05 is import general merchandise based on Balance of Payments Manual 4 (BPM 4) and onward on Balance of Payments Manual 5 (BPM 5).

Table 5: Annual, Quarterly & Monthly Import of Services

(Million US\$)

Period	FY04	FY05	FY06	FY07	FY08	FY09	FY10	FY11	FY12	FY13
Annual	3,961	6,612	8,199	8,310	10,046	7,487	6,919	7,708	8227	
Growth (%)	45.9	66.9	24.0	1.4	20.9	-25.5	-7.6	11.4	6.7	
<u>Quarter-wise</u>										
Quarter-I	799 (20.2)	1,449 (21.9)	1,953 (23.8)	2,039 (24.5)	2,194 (21.8)	2,392 (31.9)	1,585 (22.9)	1,722 (22.3)	1,976 (24.0)	1,918
Quarter-II	945 (23.9)	1,669 (25.2)	2,061 (25.1)	2,193 (26.4)	2,548 (25.4)	2,021 (27.0)	1,892 (27.3)	1,941 (25.2)	2,059 (25.0)	2,052
Quarter-III	1,097 (27.7)	1,764 (26.7)	2,061 (25.1)	2,014 (24.2)	2,569 (25.6)	1,389 (18.6)	1,582 (22.9)	1,837 (23.8)	1,959 (23.8)	1,811
Quarter-IV	1,120 (28.3)	1,730 (26.2)	2,124 (25.9)	2,064 (24.8)	2,735 (27.2)	1,685 (22.5)	1,860 (26.9)	2,208 (28.6)	2,233 (27.1)	
<u>Month-wise</u>										
July	305 (7.7)	432 (6.5)	573 (7.0)	735 (8.8)	755 (7.5)	743 (9.9)	568 (8.2)	565 (7.3)	627 (7.6)	618
August	207 (5.2)	473 (7.2)	735 (9.0)	619 (7.4)	757 (7.5)	816 (10.9)	489 (7.1)	561 (7.3)	617 (7.5)	671
September	287 (7.2)	544 (8.2)	645 (7.9)	685 (8.2)	682 (6.8)	833 (11.1)	528 (7.6)	596 (7.7)	732 (8.9)	629
October	327 (8.3)	525 (7.9)	626 (7.6)	645 (7.8)	782 (7.8)	839 (11.2)	691 (10.0)	702 (9.1)	712 (8.7)	756
November	238 (6.0)	489 (7.4)	674 (8.2)	782 (9.4)	963 (9.6)	577 (7.7)	562 (8.1)	597 (7.7)	652 (7.9)	640
December	380 (9.6)	655 (9.9)	761 (9.3)	766 (9.2)	803 (8.0)	605 (8.1)	639 (9.2)	642 (8.3)	695 (8.4)	656
January	378 (9.5)	539 (8.2)	672 (8.2)	683 (8.2)	894 (8.9)	448 (6.0)	500 (7.2)	583 (7.6)	636 (7.7)	556
February	339 (8.6)	561 (8.5)	622 (7.6)	633 (7.6)	751 (7.5)	458 (6.1)	495 (7.2)	570 (7.4)	656 (8.0)	546
March	380 (9.6)	664 (10.0)	767 (9.4)	698 (8.4)	924 (9.2)	483 (6.5)	587 (8.5)	684 (8.9)	667 (8.1)	709
April	379 (9.6)	610 (9.2)	617 (7.5)	680 (8.2)	999 (9.9)	542 (7.2)	618 (8.9)	642 (8.3)	639 (7.8)	658
May	355 (9.0)	582 (8.8)	744 (9.1)	657 (7.9)	797 (7.9)	523 (7.0)	582 (8.4)	751 (9.7)	734 (8.9)	727
June	386 (9.7)	538 (8.1)	763 (9.3)	727 (8.7)	939 (9.3)	620 (8.3)	660 (9.5)	815 (10.6)	860 (10.5)	

Notes: 1. Figures in parentheses are percentage to annual import payments of the respective years

2. Due to rounding off separate items, totals may show minor differences