

SUMMARY

Table 1(a) : Monthly Import of Goods & Services

(Million US\$)

Items	June	
	2013	2012
I. Import Payments (Banks)	3,259	3,486
II. Freight & Insurance	196	209
III. Other Import unaccounted by Banks	81	344
Unclassified Imports	25	66
Imports NRI, Sale of Duty Free Shops	16	39
Imports under Foreign Economic Assistance	3	194
Land borne Imports with Afghanistan	16	14
PIA & PNSC	3	15
Capital Equipment	0	0
Cost of Imports (Ex. Cos.)	0	0
Refund & Rebate	-8	-11
Import from EPZ	0	0
Import from Accounts Abroad	0	2
Private Donations in Kind	25	27
(A) Import General Merchandise (I-II+III)	3,145	3,621
(B) Other Import under BPM5*	29	37
(C) Import of Goods (A+B)	3,174	3,657
(D) Import of Services	589	860
(E) Import of Goods & Services (C+D)	3,763	4,517

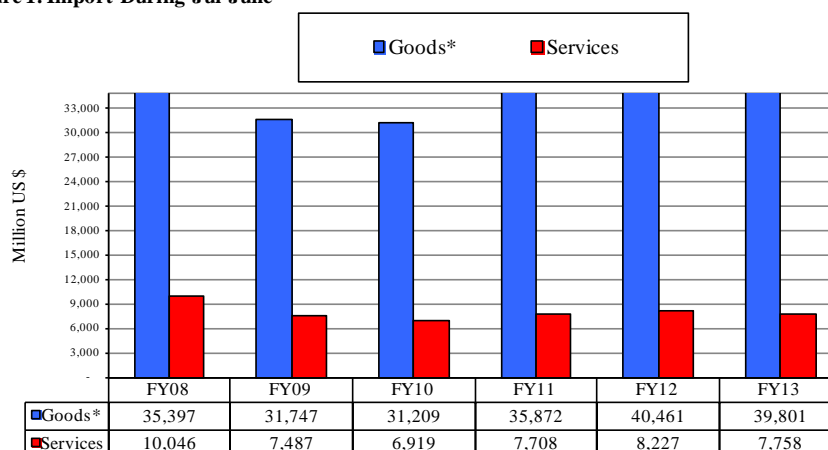
* See "Introduction" for details:

Table 1(b) : Key Indicators of Import of Goods and Services

(Million US\$)

June 2013	3,763
May 2013	4,091
% Change during June 2013 over May 2013	-8.0
June 2012	4,517
% Change during June 2013 over June 2012	-16.7
July-June 2012-13	47,558
July-June 2011-12	48,688
% Change during July-June 2012-13 over July-June 2011-12	-2.3
Monthly average during July-June 2012-13	3,963
Monthly average during July-June 2011-12	4,057
FY12	48,688
FY11	43,580
% Change during FY12 over FY11	11.7
Monthly average during FY12	4,057
Monthly average during FY11	3,632

Figure 1. Import During Jul-June



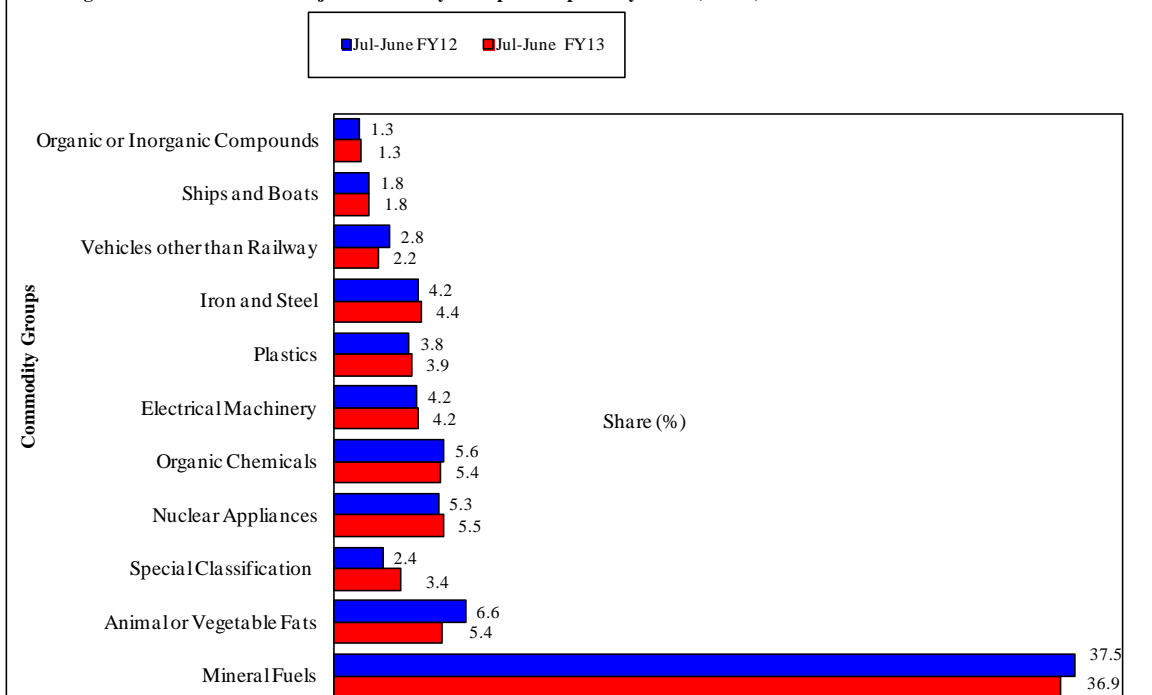
*The data is import of goods based on Balance of Payments Manual 5 (BPM 5).

Table 2: Import Payments by Major Groups of Goods & Services

(Amount in Million)

Goods/ Services	June			July- June		
	2013	2013	2012	2013	2012	%
	Pak Rs.			US \$		Change
Goods						
I. Import Payments (Banks)	321,291	3,259	3,486	39,360	39,629	-0.7
Mineral Fuels, Oils and Their Distillation Product	93,225	946	1,184	14,518	14,878	-2.4
Animal or Vegetable Fats, Oils & Cleavage Products	23,332	237	252	2,135	2,629	-18.8
Special Classification Provisions	19,580	199	208	1,338	966	38.5
Nuclear Reactors, Boilers, Machinery and Appliance	18,903	192	202	2,175	2,084	4.4
Organic Chemicals	18,111	184	192	2,128	2,207	-3.6
Electrical Machinery & Equipment and Parts thereof	15,499	157	196	1,672	1,654	1.1
Plastics and Articles thereof	14,112	143	123	1,535	1,506	1.9
Iron and Steel	13,648	138	187	1,736	1,680	3.3
Vehicles other than Railway /Tramway Rolling Stock	8,617	87	94	879	1,107	-20.6
Ships, Boats and Floating Structures	8,235	84	20	697	702	-0.7
Organic or Inorganic Compounds of Precious Metals	6,417	65	54	523	503	3.8
Fertilizers	5,667	57	33	613	1,047	-41.5
Miscellaneous Chemical Products	5,197	53	39	590	549	7.4
Residues from Food Industries, Animal Fodder	4,869	49	13	377	252	49.8
Cotton	4,829	49	97	1,129	567	99.1
Paper and Paperboard, Articles of Paper Pulp	4,552	46	44	474	464	2.2
Man-Made Filaments	4,358	44	35	528	539	-2.0
Man-Made Staple Fibers	3,899	40	38	550	591	-7.0
All Other	48,238	489	474	5,761	5,702	1.0
II. Freight & Insurance	19,277	196	209	2,362	2,378	-0.7
III. Other Import Unaccounted by Banks	5,517	81	344	2,429	2,729	-11.0
(A) Import General Merchandise (I-II+III)	307,530	3,145	3,621	39,428	39,981	-1.4
(B) Other Import Under BPM5*	2,833	29	37	373	480	-22.3
(C) Import of Goods (A+B)	310,363	3,174	3,657	39,801	40,461	-1.6
Services						
Transportation	25,245	256	297	3,141	3,510	-10.5
Other Business Services	11,107	113	172	1,566	1,555	0.7
Government Services	7,749	79	107	881	850	3.6
Travel	7,104	72	138	1,232	1,367	-9.8
Communication Services	2,423	25	29	205	179	14.5
Computer & Information Services	1,364	14	14	203	164	23.8
Insurance Services	1,181	12	57	255	279	-8.6
Royalties & License fees	1,122	11	30	142	151	-5.8
Financial Services	715	7	7	120	107	12.1
Personal, cultural & recreational Services	17	0	0	3	3	-5.2
Construction Services	13	0	9	10	62	-83.7
(D) Import of Services	58,040	589	860	7,758	8,227	-5.7
(E) Import of Goods & Services (C+D)	368,404	3,763	4,517	47,558	48,688	-2.3

Figure 2: Percent Share of Major Commodity Groups in Import Payments (Banks)



Note: - The share is based on the share of commodities in Import Payments through Banks.

Figure 3: Import of Services

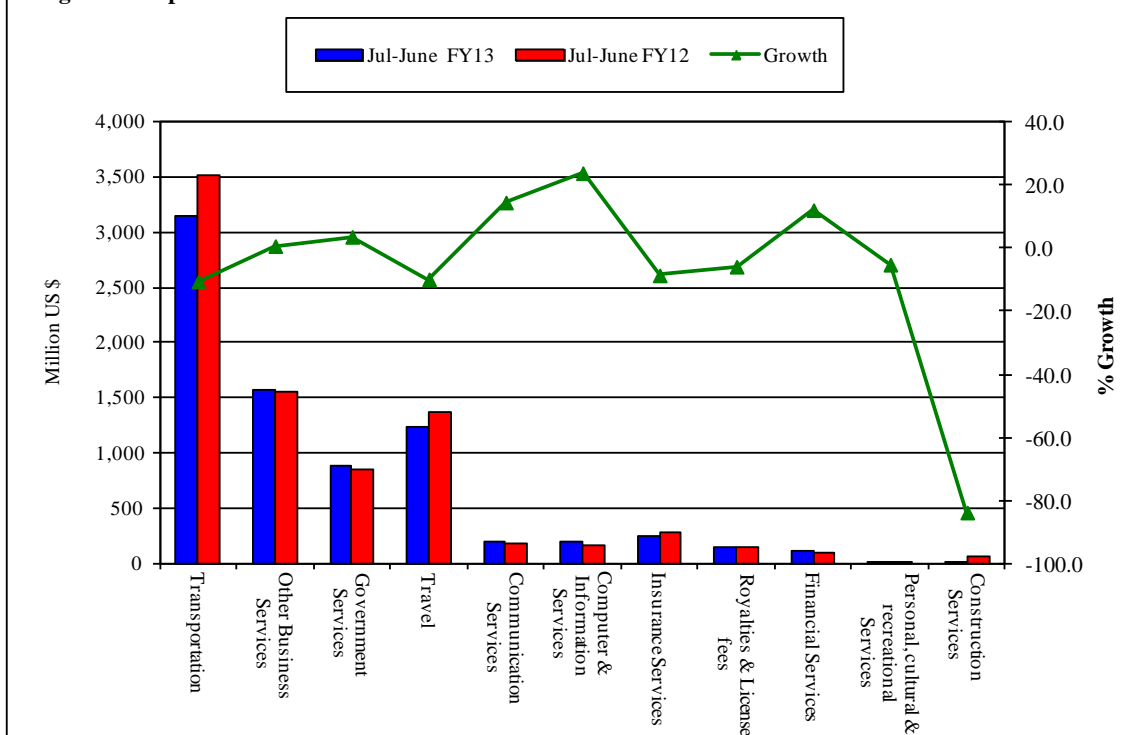
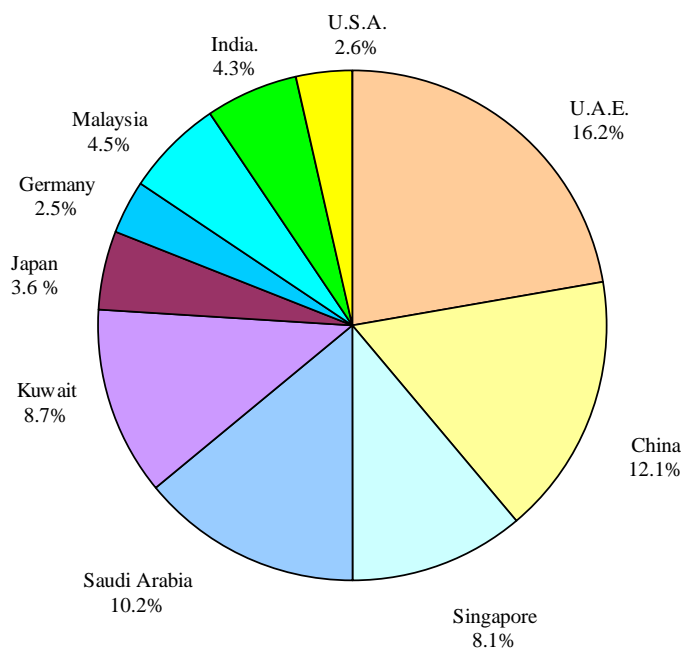
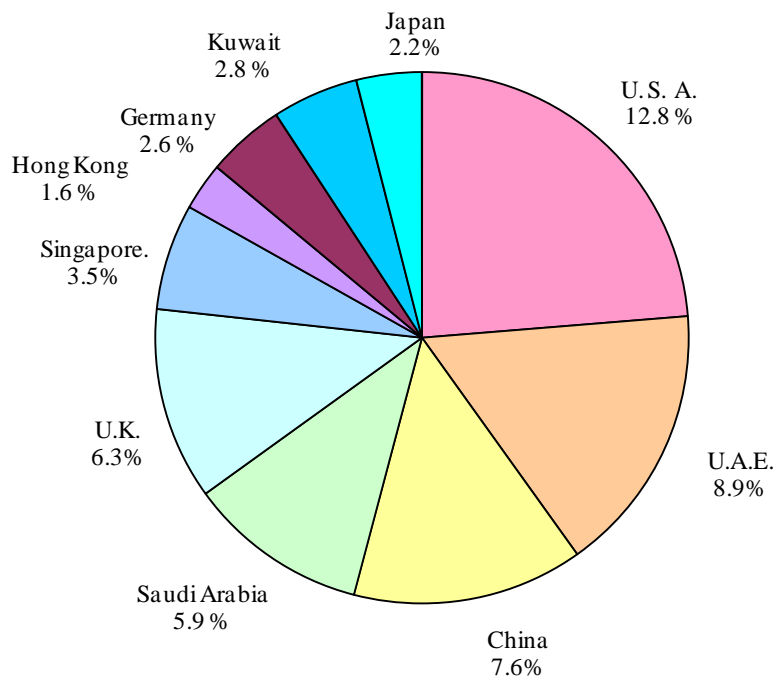


Table 3: Import of Goods & Services by Major Countries

(Amount in Millions)

Country	June			July-June		
	2013	2013	2012	2013	2012	% Change
	Pak Rs.	US \$				
Goods						
I. Total Import Payments (Banks)	321,291	3,259	3,486	39,360	39,629	-0.68
U.A.E.	57,997	588	348	6,377	6,426	-0.77
China	43,895	445	457	4,762	4,278	11.31
Singapore	30,959	314	292	3,176	2,803	13.31
Saudi Arabia	28,620	290	333	4,019	4,796	-16.19
Kuwait	21,301	216	413	3,433	3,804	-9.76
Japan	14,252	145	133	1,433	1,557	-7.94
Germany	10,820	110	84	974	1,175	-17.10
Malaysia	10,301	104	217	1,773	2,156	-17.79
India	9,919	101	109	1,677	1,253	33.81
U. S. A.	9,281	94	62	1,019	789	29.10
U. K.	6,490	66	98	826	699	18.06
France	5,936	60	77	462	414	11.71
Thailand	5,548	56	44	552	580	-4.74
South Korea	4,950	50	50	573	648	-11.52
Indonesia	4,590	47	73	700	674	3.92
All Others	56,431	572	697	7,602	7,577	0.34
II. Freight & Insurance	19,277	196	209	2,362	2,378	-0.68
III. Other Import Unaccounted by Banks	5,517	81	344	2,429	2,729	-10.98
(A) Import General Merchandise (I-II+III)	307,530	3,145	3,621	39,428	39,981	-1.38
(B) Other Import under BPM5*	2,833	29	37	373	480	-22.34
(C) Import of Goods (A+B)	310,363	3,174	3,657	39,801	40,461	-1.63
Services						
U. S. A.	8,322	84	86	994	895	11.12
U.A.E.	6,535	66	47	689	763	-9.81
China	4,202	43	80	588	676	-13.05
Saudi Arabia	3,589	36	39	459	498	-7.80
U. K.	3,551	36	35	489	474	3.16
Singapore	2,550	26	26	270	256	5.49
Hong Kong	2,003	20	22	121	119	2.04
Germany	1,945	20	27	199	202	-1.42
Kuwait	1,523	15	26	220	252	-12.64
Japan	1,318	13	11	167	231	-27.73
Australia	1,177	12	6	95	67	42.95
Malaysia	934	9	15	151	167	-9.62
France	774	8	9	86	86	-0.03
India	661	7	7	114	80	42.86
Canada	623	6	5	63	61	4.64
All Other	18,333	186	418	3,053	3,402	-10.26
(D) Total Import of Services	58,040	589	860	7,758	8,227	-5.70
Total Import of Goods & Services (C+D)	368,404	3,763	4,517	47,558	48,688	-2.32

Figure 4: % Share of Major Countries in Import Payments of Goods During Jul -June FY13**Figure 5: % Share of Major Countries in Import of Services During Jul-June FY13**

Note: % Share is based on Import Payments through Banks

Figure 6: Annual Import of Goods & Services from FY03 to FY12

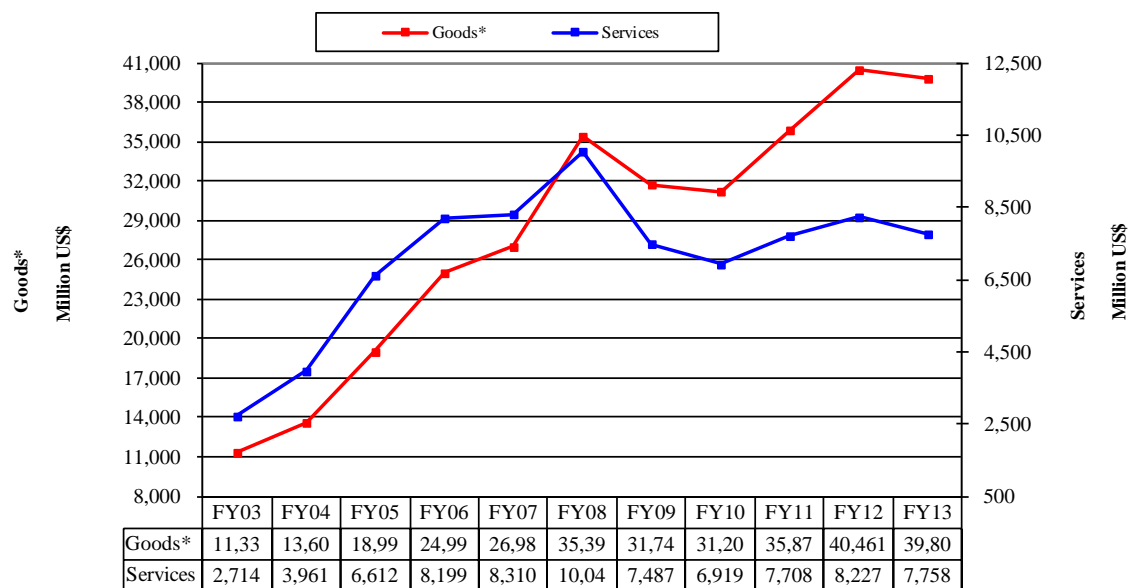
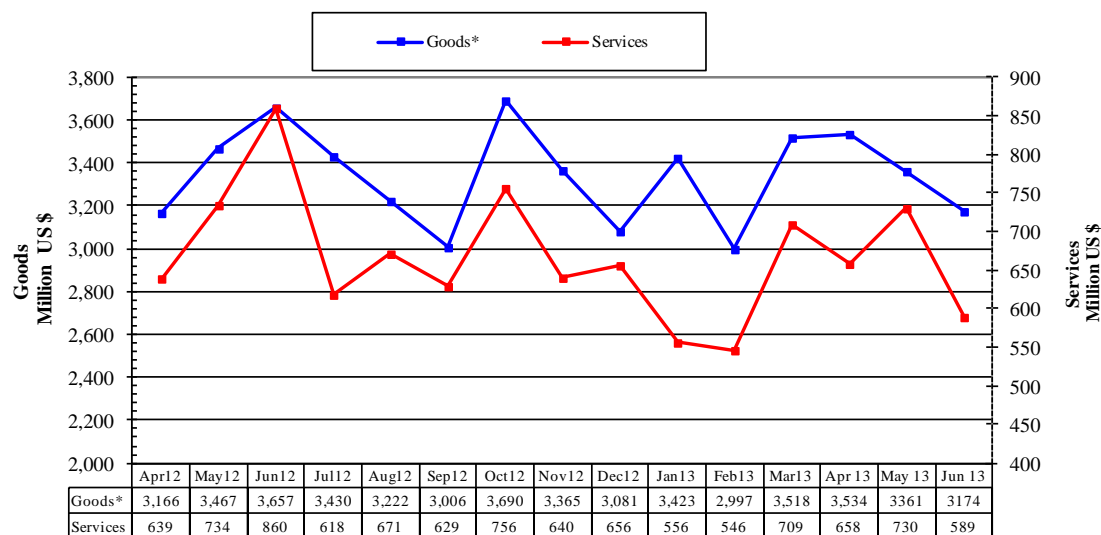


Figure 7: Monthly Imports of Goods & Services



* The data before FY05 is import general merchandise based on Balance of Payments Manual 4 (BPM 4) and onward on Balance of Payments Manual 5 (BPM 5).

Table 4: Annual, Quarterly & Monthly Import of Goods*

(Million US\$)

Period	FY04	FY05	FY06	FY07	FY08	FY09	FY10	FY11	FY12	FY13
Annual	13,604	18,996	24,994	26,989	35,395	31,746	31,209	35,872	40,461	39,801
Growth (%)	20.0	39.6	31.6	8.0	31.2	-10.3	-1.7	14.9	12.8	-1.6
<u>Quarter-wise</u>										
Quarter-I	3,014 (22.2)	4,175 (22.0)	5,925 (23.7)	6,933 (25.7)	6,939 (19.6)	10,229 (32.2)	7,485 (24.0)	8,257 (23.0)	10,390 (25.7)	9,658 (24.3)
Quarter-II	3,204 (23.6)	5,047 (26.6)	6,074 (24.3)	6,768 (25.1)	8,548 (24.1)	8,077 (25.4)	7,691 (24.6)	8,627 (24.0)	9,699 (24.0)	10,136 (25.5)
Quarter-III	3,602 (26.5)	4,801 (25.3)	6,261 (25.1)	6,454 (23.9)	9,765 (27.6)	6,275 (19.8)	7,367 (23.6)	9,165 (25.5)	10,082 (24.9)	9,938 (25.0)
Quarter-IV	3,784 (27.8)	4,973 (26.2)	6,734 (26.9)	6,834 (25.3)	10,144 (28.7)	7,165 (22.6)	8,666 (27.8)	9,823 (27.4)	10,290 (25.4)	10,069 (25.3)
<u>Month-wise</u>										
July	1,020 (7.5)	1,440 (7.6)	1,772 (7.1)	2,418 (9.0)	2,411 (6.8)	3,373 (10.6)	2,818 (9.0)	2,925 (8.2)	3,179 (7.9)	3,430 (8.6)
August	930 (6.8)	1,311 (6.9)	2,087 (8.4)	2,308 (8.6)	2,259 (6.4)	3,162 (10.0)	2,189 (7.0)	2,933 (8.2)	3,674 (9.1)	3,222 (8.1)
September	1,064 (7.8)	1,424 (7.5)	2,066 (8.3)	2,207 (8.2)	2,269 (6.4)	3,694 (11.6)	2,478 (7.9)	2,399 (6.7)	3,537 (8.7)	3,006 (7.6)
October	1,057 (7.8)	1,616 (8.5)	2,055 (8.2)	2,205 (8.2)	2,604 (7.4)	3,243 (10.2)	2,756 (8.8)	2,620 (7.3)	3,237 (8.0)	3,690 (9.3)
November	876 (6.4)	1,745 (9.2)	2,059 (8.2)	2,161 (8.0)	2,963 (8.4)	2,233 (7.0)	2,194 (7.0)	2,811 (7.8)	3,178 (7.9)	3,365 (8.5)
December	1,271 (9.3)	1,686 (8.9)	1,960 (7.8)	2,402 (8.9)	2,980 (8.4)	2,601 (8.2)	2,741 (8.8)	3,196 (8.9)	3,284 (8.1)	3,081 (7.7)
January	1,168 (8.6)	1,427 (7.5)	2,070 (8.3)	2,105 (7.8)	3,329 (9.4)	2,140 (6.7)	2,536 (8.1)	2,797 (7.8)	3,374 (8.3)	3,423 (8.6)
February	1,212 (8.9)	1,591 (8.4)	1,886 (7.5)	2,226 (8.2)	2,913 (8.2)	1,884 (5.9)	2,345 (7.5)	3,076 (8.6)	3,713 (9.2)	2,997 (7.5)
March	1,222 (9.0)	1,783 (9.4)	2,305 (9.2)	2,123 (7.9)	3,523 (10.0)	2,251 (7.1)	2,486 (8.0)	3,292 (9.2)	2,995 (7.4)	3,518 (8.8)
April	1,230 (9.0)	1,508 (7.9)	1,682 (6.7)	2,185 (8.1)	3,391 (9.6)	2,370 (7.5)	2,916 (9.3)	2,910 (8.1)	3,166 (7.8)	3,534 (8.9)
May	1,166 (8.6)	1,741 (9.2)	2,361 (9.4)	2,214 (8.2)	3,246 (9.2)	2,002 (6.3)	2,638 (8.5)	3,359 (9.4)	3,467 (8.6)	3,361 (8.4)
June	1,388 (10.2)	1,724 (9.1)	2,691 (10.8)	2,435 (9.0)	3,507 (9.9)	2,793 (8.8)	3,112 (10.0)	3,554 (9.9)	3,657 (9.0)	3,174 (8.0)

Notes: 1. Figures in parentheses are percentage to annual import payments of the respective years

2. Due to rounding off separate items, totals may show minor differences

* The data before FY05 is import general merchandise based on Balance of Payments Manual 4 (BPM 4) and onward on Balance of Payments Manual 5 (BPM 5).

Table 5: Annual, Quarterly & Monthly Import of Services

(Million US\$)

Period	FY04	FY05	FY06	FY07	FY08	FY09	FY10	FY11	FY12	FY13
Annual	3,961	6,612	8,199	8,310	10,046	7,487	6,919	7,708	8227	7,758
Growth (%)	45.9	66.9	24.0	1.4	20.9	-25.5	-7.6	11.4	6.7	-5.7
<u>Quarter-wise</u>										
Quarter-I	799 (20.2)	1,449 (21.9)	1,953 (23.8)	2,039 (24.5)	2,194 (21.8)	2,392 (31.9)	1,585 (22.9)	1,722 (22.3)	1,976 (24.0)	1,918 (24.7)
Quarter-II	945 (23.9)	1,669 (25.2)	2,061 (25.1)	2,193 (26.4)	2,548 (25.4)	2,021 (27.0)	1,892 (27.3)	1,941 (25.2)	2,059 (25.0)	2,052 (26.5)
Quarter-III	1,097 (27.7)	1,764 (26.7)	2,061 (25.1)	2,014 (24.2)	2,569 (25.6)	1,389 (18.6)	1,582 (22.9)	1,837 (23.8)	1,959 (23.8)	1,811 (23.3)
Quarter-IV	1,120 (28.3)	1,730 (26.2)	2,124 (25.9)	2,064 (24.8)	2,735 (27.2)	1,685 (22.5)	1,860 (26.9)	2,208 (28.6)	2,233 (27.1)	1,977 (25.5)
<u>Month-wise</u>										
July	305 (7.7)	432 (6.5)	573 (7.0)	735 (8.8)	755 (7.5)	743 (9.9)	568 (8.2)	565 (7.3)	627 (7.6)	618 (8.0)
August	207 (5.2)	473 (7.2)	735 (9.0)	619 (7.4)	757 (7.5)	816 (10.9)	489 (7.1)	561 (7.3)	617 (7.5)	671 (8.6)
September	287 (7.2)	544 (8.2)	645 (7.9)	685 (8.2)	682 (6.8)	833 (11.1)	528 (7.6)	596 (7.7)	732 (8.9)	629 (8.1)
October	327 (8.3)	525 (7.9)	626 (7.6)	645 (7.8)	782 (7.8)	839 (11.2)	691 (10.0)	702 (9.1)	712 (8.7)	756 (9.7)
November	238 (6.0)	489 (7.4)	674 (8.2)	782 (9.4)	963 (9.6)	577 (7.7)	562 (8.1)	597 (7.7)	652 (7.9)	640 (8.2)
December	380 (9.6)	655 (9.9)	761 (9.3)	766 (9.2)	803 (8.0)	605 (8.1)	639 (9.2)	642 (8.3)	695 (8.4)	656 (8.5)
January	378 (9.5)	539 (8.2)	672 (8.2)	683 (8.2)	894 (8.9)	448 (6.0)	500 (7.2)	583 (7.6)	636 (7.7)	556 (7.2)
February	339 (8.6)	561 (8.5)	622 (7.6)	633 (7.6)	751 (7.5)	458 (6.1)	495 (7.2)	570 (7.4)	656 (8.0)	546 (7.0)
March	380 (9.6)	664 (10.0)	767 (9.4)	698 (8.4)	924 (9.2)	483 (6.5)	587 (8.5)	684 (8.9)	667 (8.1)	709 (9.1)
April	379 (9.6)	610 (9.2)	617 (7.5)	680 (8.2)	999 (9.9)	542 (7.2)	618 (8.9)	642 (8.3)	639 (7.8)	658 (8.5)
May	355 (9.0)	582 (8.8)	744 (9.1)	657 (7.9)	797 (7.9)	523 (7.0)	582 (8.4)	751 (9.7)	734 (8.9)	730 (9.4)
June	386 (9.7)	538 (8.1)	763 (9.3)	727 (8.7)	939 (9.3)	620 (8.3)	660 (9.5)	815 (10.6)	860 (10.5)	589 (7.6)

Notes: 1. Figures in parentheses are percentage to annual import payments of the respective years

2. Due to rounding off separate items, totals may show minor differences

