

S U M M A R Y

Table 1(a) : Monthly Import of Goods & Services

(Million US\$)

Items	May	
	2012	2011
I. Import Payments (Banks)	3,393	3,384
II. Freight & Insurance	204	271
III. Other Import unaccounted by Banks	104	207
Unclassified Imports	0	114
Imports NRI, Sale of Duty Free Shops	33	13
Imports under Foreign Economic Assistance	58	52
Land borne Imports with Afghanistan	13	16
PIA & PNSC	11	16
Capital Equipment	0	0
Cost of Imports (Ex. Cos.)	0	0
Refund & Rebate	-11	-6
Import from EPZ	0	0
Imports from Accounts Abroad	0	2
(A) Import General Merchandise (I-II+III)	3,293	3,320
(B) Other Import under BPM5*	35	39
(C) Import of Goods (A+B)	3,328	3,359
(D) Import of Services	691	751
(E) Import of Goods & Services (C+D)	4,019	4,110

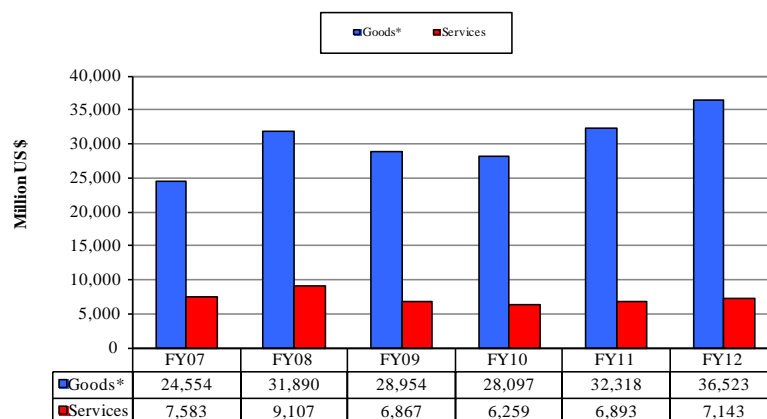
* See "Introduction" for details:

Table 1(b) : Key Indicators of Import of Goods and Services

(Million US\$)

May 2012	4,019
April 2012	3,800
% Change during May 2012 over April 2012	5.7
May 2011	4,110
% Change during May 2012 over May 2011	-2.2
July-May 2011-12	43,666
July-May 2010-11	39,211
% Change during July-May 2011-12 over July-May 2010-11	11.4
Monthly average during July-May 2011-12	3,970
Monthly average during July-May 2010-11	3,565
FY11	43,580
FY10	38,128
% Change during FY11 over FY10	14.3
Monthly average during FY11	3,632
Monthly average during FY10	3,177

Figure 1. Import During Jul-May

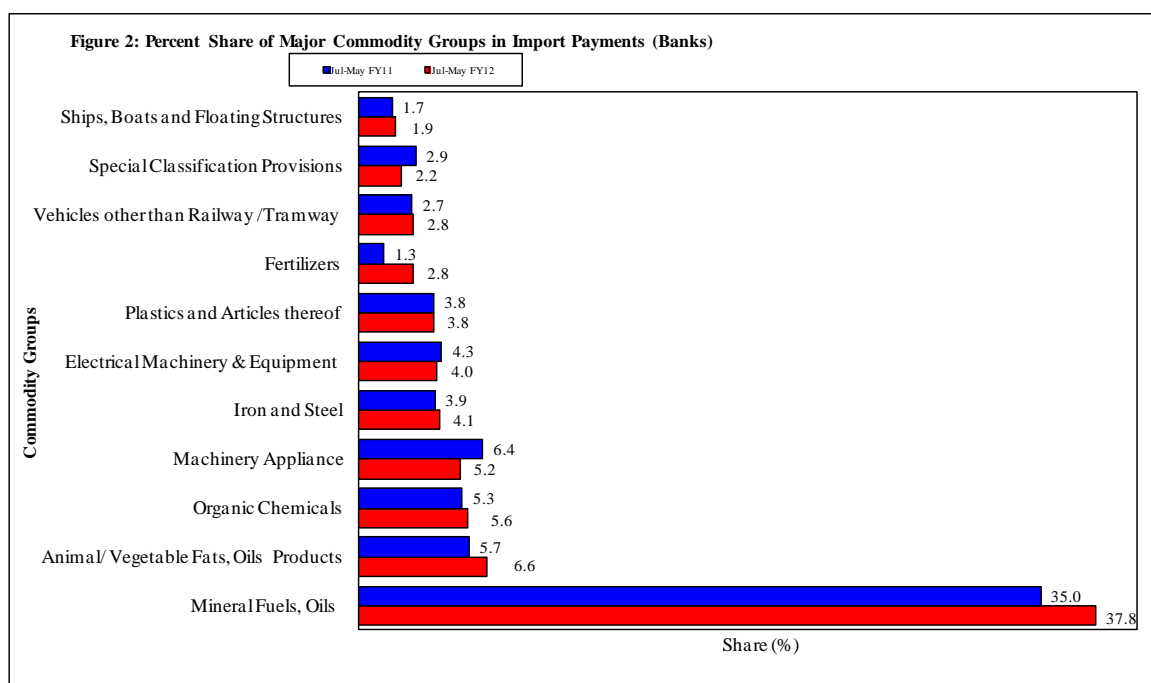


*The data is import of goods based on Balance of Payments Manual 5 (BPM 5).

Table 2: Import Payments by Major Groups of Goods & Services

(Amount in Million)

Goods/ Services	May			July-May		% Change
	2012	2012	2011	2011-12	2010-11	
	Pak Rs.	US \$				
Goods						
I. Import Payments (Banks)	309,642	3,393	3,384	36,180	32,891	10.0
Mineral Fuels, Oils and Their Distillation Product	111,675	1,224	1,321	13,693	11,515	18.9
Animal or Vegetable Fats, Oils & Cleavage Products	22,521	247	175	2,377	1,863	27.6
Organic Chemicals	16,963	186	233	2,015	1,750	15.1
Nuclear Reactors, Boilers, Machinery and Appliance	19,503	214	164	1,881	2,094	-10.1
Iron and Steel	14,141	155	120	1,493	1,283	16.4
Electrical Machinery & Equipment and Parts thereof	13,480	148	121	1,458	1,405	3.8
Plastics and Articles thereof	13,037	143	128	1,383	1,265	9.3
Fertilizers	2,147	24	24	1,014	430	135.7
Vehicles other than Railway /Tramway Rolling Stock	8,762	96	83	1,013	902	12.3
Special Classification Provisions	9,630	106	112	794	962	-17.4
Ships, Boats and Floating Structures	6,788	74	121	682	561	21.6
Oil Seeds and Oleaginous Fruit	961	11	36	661	543	21.8
Man-Made Staple Fibers	5,231	57	46	553	542	2.1
Miscellaneous Chemical Products	4,680	51	52	510	483	5.6
Man-Made Filaments	4,224	46	54	504	488	3.5
Edible Vegetables	6,029	66	28	492	461	6.7
Cotton	5,439	60	82	470	1,011	-53.5
Organic or Inorganic Compounds of Precious Metals	3,188	35	37	450	397	13.3
All Others	41,243	452	447	4,735	4,937	-4.1
II. Freight & Insurance	18,579	204	271	2,171	2,631	-17.5
III. Other Import Unaccounted by Banks	9,468	104	207	2,141	1,745	22.7
(A) Import General Merchandise (I-II+III)	300,532	3,293	3,320	36,150	32,005	13.0
(B) Other Import under BPM5*	3,185	35	39	372	313	18.8
(C) Import of Goods (A+B)	303,717	3,328	3,359	36,523	32,318	13.0
Services						
Transportation	24,161	265	414	3,167	3,652	-13.3
Travel	14,503	159	84	1,238	875	41.5
Communication Services	907	10	16	152	160	-5.4
Construction Services	6	0	20	53	42	26.4
Insurance Services	1,820	20	9	221	138	60.4
Financial Services	879	10	7	100	99	0.7
Computer & Information Services	1,327	15	19	150	151	-0.8
Royalties & License fees	1,214	13	12	121	106	13.9
Other Business Services	13,723	150	132	1,202	1,099	9.4
Personal, cultural & recreational Services	9	0	3	2	10	-78.1
Government Services	4,442	49	35	737	561	31.5
(D) Total Import of Services	62,989	691	751	7,143	6,893	3.6
Total Import of Goods & Services (C+D)	366,706	4,019	4,110	43,666	39,211	11.4



Note: - The share is based on the share of commodities in Import Payments through Banks

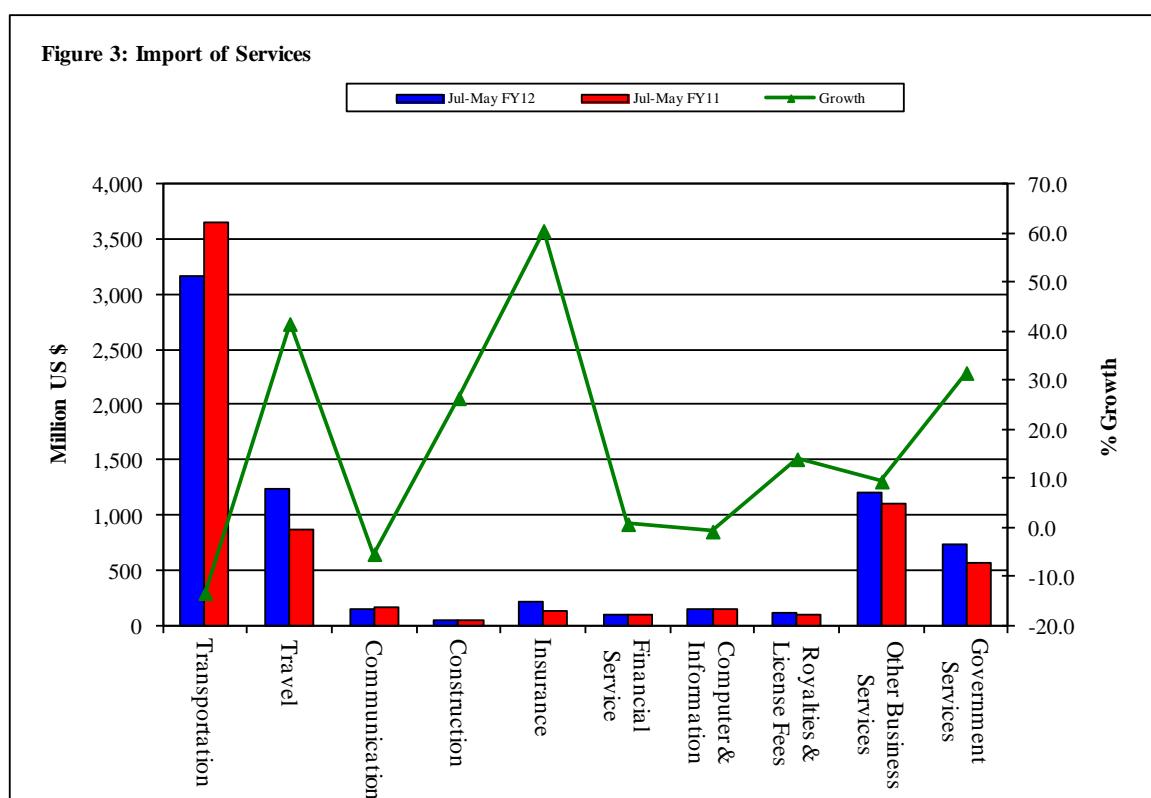
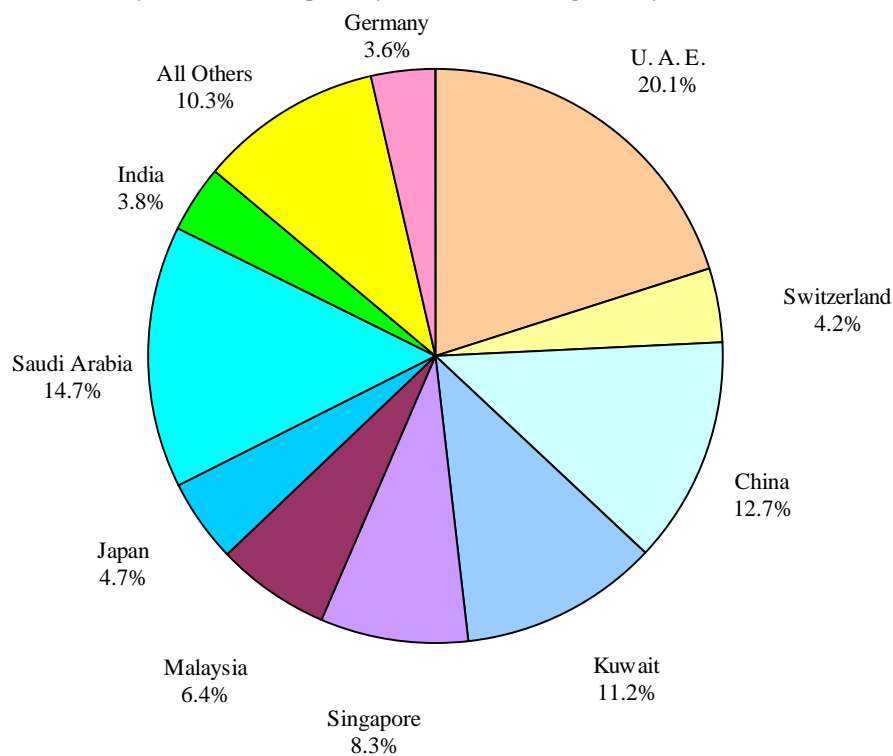


Table 3: Import of Goods & Services by Major Countries

(Amount in Million)

Table 5: Import of Goods & Services by Major Countries				(Amount in Million)		
Country	May			July- May		% Change
	2012	2012	2011	2011-12	2010-11	
	Pak Rs.	US \$				
Goods						
I. Import Payments (Banks)	309,642	3,393	3,384	36,180	32,891	10.0
U. A. E.	67,311	738	482	6,078	5,155	17.9
Saudi Arabia	30,690	336	495	4,463	3,948	13.1
China	38,029	417	337	3,858	3,701	4.2
Kuwait	26,400	289	344	3,391	2,675	26.8
Singapore	17,446	191	216	2,512	2,325	8.0
Malaysia	20,436	224	166	1,939	1,625	19.4
Japan	10,906	120	204	1,424	1,420	0.2
Switzerland	3,416	37	52	1,264	838	50.7
India	9,642	106	106	1,145	1,367	-16.3
Germany	7,475	82	90	1,091	857	27.4
U. S. A.	6,461	71	92	728	1,016	-28.4
Indonesia	7,607	83	41	601	375	60.2
U. K.	5,671	62	45	601	606	-0.9
South Korea	5,370	59	50	598	510	17.2
Thailand	4,740	52	40	536	469	14.2
All Others	48,042	526	624	5,953	6,003	-0.8
II. Freight & Insurance	18,579	204	271	2,171	2,631	-17.5
III. Other Import Unaccounted by Banks	9,468	104	207	2,141	1,745	22.7
(A) Import General Merchandise (I-II+III)	300,532	3,293	3,320	36,150	32,005	13.0
(B) Other Import under BPM5*	3,185	35	39	372	313	18.8
(C) Import of Goods (A+B)	303,717	3,328	3,359	36,523	32,318	13.0
Services						
U. S. A.	6,021	66	79	794	862	-7.9
U. A. E.	5,392	59	96	731	810	-9.8
China	8,296	91	107	571	586	-2.4
Saudi Arabia	5,090	56	65	508	522	-2.7
U. K.	3,945	43	40	423	476	-11.0
Singapore	1,424	16	28	228	290	-21.3
Kuwait	1,785	20	30	226	235	-4.1
Japan	1,773	19	24	218	197	11.0
Germany	1,007	11	14	172	151	13.9
Malaysia	1,463	16	15	154	160	-3.7
Switzerland	609	7	10	131	115	14.4
Thailand	1,062	12	9	123	100	23.0
Hongkong	519	6	9	100	94	7.3
Belgium	1,901	21	4	79	46	71.8
France	570	6	10	74	91	-19.0
All Other	22,132	243	210	2,611	2,160	20.9
(D) Total Import of Services	62,989	691	751	7,143	6,893	3.6
Total Import of Goods & Services (C+D)	366,706	4,019	4,110	43,666	39,211	11.4

Figure 4: % Share of Major Countries in Import Payments (Banks) During Jul-May FY12

Note: % Share is based on Import Payments through Banks

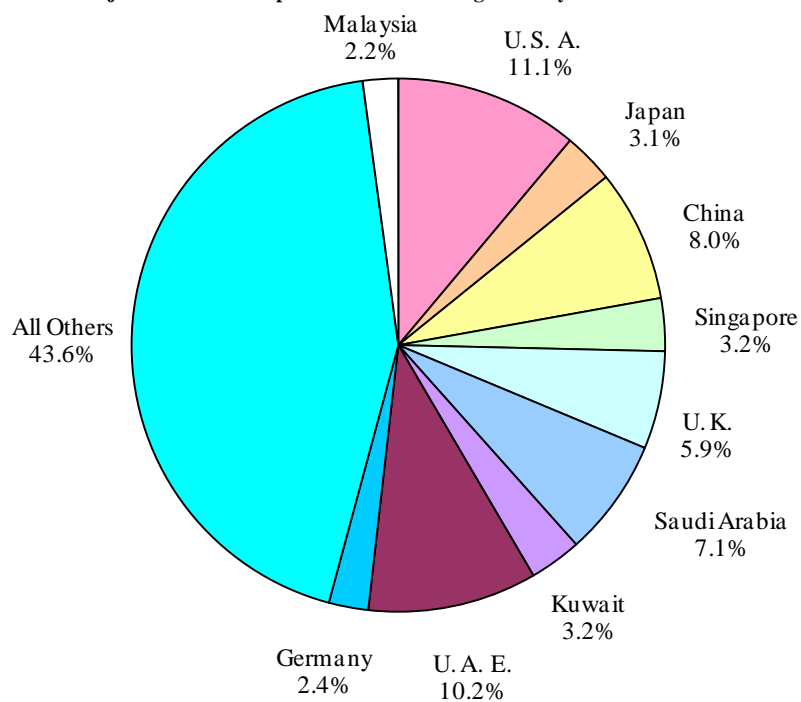
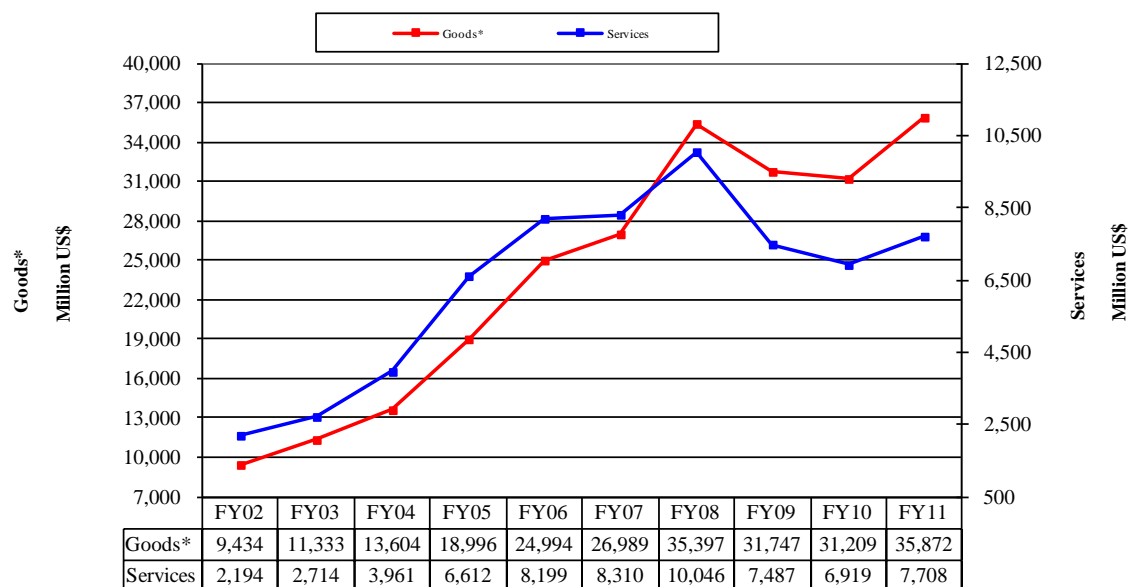
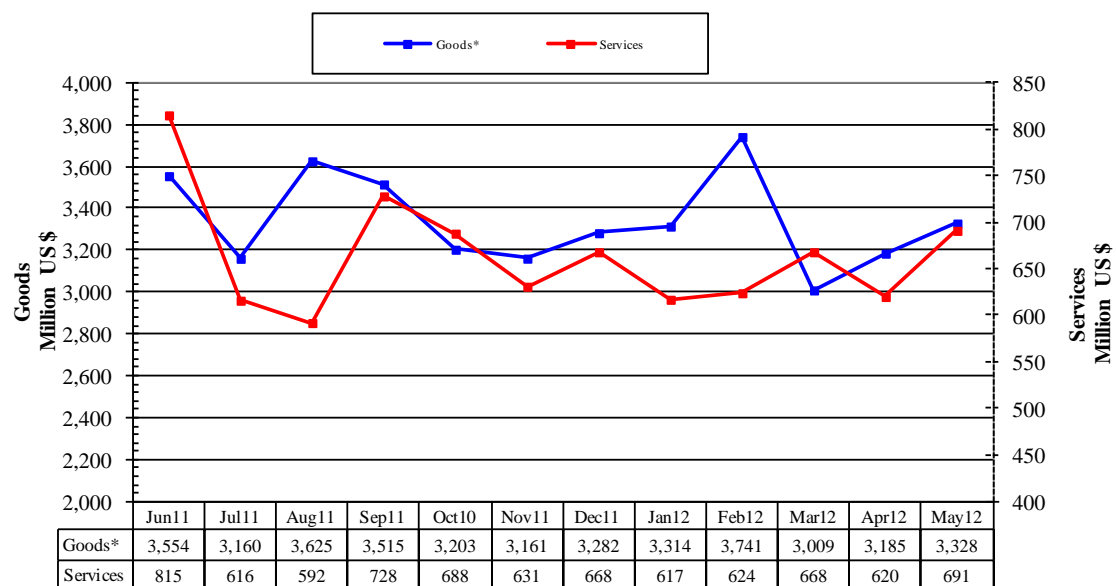
Figure 5: % Share of Major Countries in Import of Services During Jul-May FY12

Figure 6: Annual Import of Goods & Services from FY02 to FY11**Figure 7: Monthly Imports of Goods & Services**

* The data before FY05 is import general merchandise based on Balance of Payments Manual 4 (BPM 4) and onward on Balance of Payments Manual 5 (BPM 5).

Table 4: Annual, Quarterly & Monthly Import of Goods**

(Million US\$)

Period	FY03	FY04	FY05	FY06	FY07	FY08	FY09	FY10	FY11	FY12
Annual	11,333	13,604	18,996	24,994	26,989	35,397	31,747	31,209	35,872	36,523*
Growth (%)	20.1	20.0	39.6	31.6	8.0	31.2	-10.3	-1.7	14.9	
Quarter-wise										
Quarter-I	2,769 (24.4)	3,014 (22.2)	4,175 (22.0)	5,925 (23.7)	6,933 (25.7)	6,940 (19.6)	10,230 (32.2)	7,485 (24.0)	8,257 (23.0)	10,300
Quarter-II	2,853 (25.2)	3,204 (23.6)	5,047 (26.6)	6,074 (24.3)	6,768 (25.1)	8,548 (24.1)	8,077 (25.4)	7,691 (24.6)	8,627 (24.0)	9,646
Quarter-III	2,744 (24.2)	3,602 (26.5)	4,801 (25.3)	6,261 (25.1)	6,454 (23.9)	9,765 (27.6)	6,275 (19.8)	7,367 (23.6)	9,165 (25.5)	10,064
Quarter-IV	2,967 (26.2)	3,784 (27.8)	4,973 (26.2)	6,734 (26.9)	6,834 (25.3)	10,144 (28.7)	7,165 (22.6)	8,666 (27.8)	9,824 (27.4)	
Month-wise										
July	943 (8.3)	1,020 (7.5)	1,440 (7.6)	1,772 (7.1)	2,418 (9.0)	2,411 (6.8)	3,373 (10.6)	2,818 (9.0)	2,925 (8.2)	3,160
August	974 (8.6)	930 (6.8)	1,311 (6.9)	2,087 (8.4)	2,308 (8.6)	2,259 (6.4)	3,162 (10.0)	2,189 (7.0)	2,933 (8.2)	3,625
September	852 (7.5)	1,064 (7.8)	1,424 (7.5)	2,066 (8.3)	2,207 (8.2)	2,269 (6.4)	3,694 (11.6)	2,478 (7.9)	2,399 (6.7)	3,515
October	899 (7.9)	1,057 (7.8)	1,616 (8.5)	2,055 (8.2)	2,205 (8.2)	2,604 (7.4)	3,243 (10.2)	2,756 (8.8)	2,620 (7.3)	3,203
November	920 (8.1)	876 (6.4)	1,745 (9.2)	2,059 (8.2)	2,161 (8.0)	2,963 (8.4)	2,233 (7.0)	2,194 (7.0)	2,811 (7.8)	3,161
December	1,034 (9.1)	1,271 (9.3)	1,686 (8.9)	1,960 (7.8)	2,402 (8.9)	2,980 (8.4)	2,601 (8.2)	2,741 (8.8)	3,196 (8.9)	3,282
January	924 (8.2)	1,168 (8.6)	1,427 (7.5)	2,070 (8.3)	2,105 (7.8)	3,329 (9.4)	2,140 (6.7)	2,536 (8.1)	2,797 (7.8)	3,314
February	827 (7.3)	1,212 (8.9)	1,591 (8.4)	1,886 (7.5)	2,226 (8.2)	2,913 (8.2)	1,884 (5.9)	2,345 (7.5)	3,076 (8.6)	3,741
March	993 (8.8)	1,222 (9.0)	1,783 (9.4)	2,305 (9.2)	2,123 (7.9)	3,523 (10.0)	2,251 (7.1)	2,486 (8.0)	3,292 (9.2)	3,009
April	979 (8.6)	1,230 (9.0)	1,508 (7.9)	1,682 (6.7)	2,185 (8.1)	3,391 (9.6)	2,370 (7.5)	2,916 (9.3)	2,910 (8.1)	3,185
May	959 (8.5)	1,166 (8.6)	1,741 (9.2)	2,361 (9.4)	2,214 (8.2)	3,246 (9.2)	2,002 (6.3)	2,638 (8.5)	3,359 (9.4)	3,328
June	1,029 (9.1)	1,388 (10.2)	1,724 (9.1)	2,691 (10.8)	2,435 (9.0)	3,507 (9.9)	2,793 (8.8)	3,112 (10.0)	3,554 (9.9)	

Notes: 1. Figures in parentheses are percentage to annual import payments of the respective years

2. Due to rounding off separate items, totals may show minor differences

* The total include figures for July to current month

** The data before FY05 is import general merchandise based on Balance of Payments Manual 4 (BPM 4) and onward on Balance of Payments Manual 5 (BPM 5).

Table 5: Annual, Quarterly & Monthly Import of Services

(Million US\$)

Period	FY03	FY04	FY05	FY06	FY07	FY08	FY09	FY10	FY11	FY12
Annual	2,714	3,961	6,612	8,199	8,310	10,046	7,487	6,919	7,708	7,143*
Growth (%)	23.7	45.9	66.9	24.0	1.4	20.9	-25.5	-7.6	11.4	
<u>Quarter-wise</u>										
Quarter-I	579 (21.3)	799 (20.2)	1,449 (21.9)	1,953 (23.8)	2,039 (24.5)	2,194 (21.8)	2,392 (31.9)	1,585 (22.9)	1,722 (22.3)	1,936
Quarter-II	586 (21.6)	945 (23.9)	1,669 (25.2)	2,061 (25.1)	2,193 (26.4)	2,548 (25.4)	2,021 (27.0)	1,892 (27.3)	1,941 (25.2)	1,987
Quarter-III	649 (23.9)	1,097 (27.7)	1,764 (26.7)	2,061 (25.1)	2,014 (24.2)	2,569 (25.6)	1,389 (18.6)	1,582 (22.9)	1,837 (23.8)	1,909
Quarter-IV	900 (33.2)	1,120 (28.3)	1,730 (26.2)	2,124 (25.9)	2,064 (24.8)	2,735 (27.2)	1,685 (22.5)	1,860 (26.9)	2,208 (28.6)	
<u>Month-wise</u>										
July	181 (6.7)	305 (7.7)	432 (6.5)	573 (7.0)	735 (8.8)	755 (7.5)	743 (9.9)	568 (8.2)	565 (7.3)	616
August	184 (6.8)	207 (5.2)	473 (7.2)	735 (9.0)	619 (7.4)	757 (7.5)	816 (10.9)	489 (7.1)	561 (7.3)	592
September	214 (7.9)	287 (7.2)	544 (8.2)	645 (7.9)	685 (8.2)	682 (6.8)	833 (11.1)	528 (7.6)	596 (7.7)	728
October	189 (7.0)	327 (8.3)	525 (7.9)	626 (7.6)	645 (7.8)	782 (7.8)	839 (11.2)	691 (10.0)	702 (9.1)	688
November	195 (7.2)	238 (6.0)	489 (7.4)	674 (8.2)	782 (9.4)	963 (9.6)	577 (7.7)	562 (8.1)	597 (7.7)	631
December	202 (7.4)	380 (9.6)	655 (9.9)	761 (9.3)	766 (9.2)	803 (8.0)	605 (8.1)	639 (9.2)	642 (8.3)	668
January	248 (9.1)	378 (9.5)	539 (8.2)	672 (8.2)	683 (8.2)	894 (8.9)	448 (6.0)	500 (7.2)	583 (7.6)	617
February	185 (6.8)	339 (8.6)	561 (8.5)	622 (7.6)	633 (7.6)	751 (7.5)	458 (6.1)	495 (7.2)	570 (7.4)	624
March	216 (8.0)	380 (9.6)	664 (10.0)	767 (9.4)	698 (8.4)	924 (9.2)	483 (6.5)	587 (8.5)	684 (8.9)	668
April	331 (12.2)	379 (9.6)	610 (9.2)	617 (7.5)	680 (8.2)	999 (9.9)	542 (7.2)	618 (8.9)	642 (8.3)	620
May	276 (10.2)	355 (9.0)	582 (8.8)	744 (9.1)	657 (7.9)	797 (7.9)	523 (7.0)	582 (8.4)	751 (9.7)	691
June	293 (10.8)	386 (9.7)	538 (8.1)	763 (9.3)	727 (8.7)	939 (9.3)	620 (8.3)	660 (9.5)	815 (10.6)	

Notes: 1. Figures in parentheses are percentage to annual import payments of the respective years

2. Due to rounding off separate items, totals may show minor differences

* The total include figures for July to current month