

## S U M M A R Y

Table 1(a) : Monthly Import of Goods &amp; Services

(Million US\$)

Items	March	
	2012	2011
I. Import Payments (Banks)	2,931	3,389
II. Freight & Insurance	176	271
III. Other Import unaccounted by Banks	158	140
Unclassified Imports	14	30
Imports NRI, Sale of Duty Free Shops	21	6
Imports under Foreign Economic Assistance	103	96
Land borne Imports with Afghanistan	13	10
PIA & PNSC	13	10
Capital Equipment	0	0
Cost of Imports (Ex. Cos.)	0	0
Refund & Rebate	-6	-13
Import from EPZ	0	0
Imports from Accounts Abroad	0	0
(A) Import General Merchandise (I-II+III)	2,913	3,258
(B) Other Import under BPM5*	27	34
(C) Import of Goods (A+B)	2,940	3,292
(D) Import of Services	659	684
(E) Import of Goods & Services (C+D)	3,599	3,976

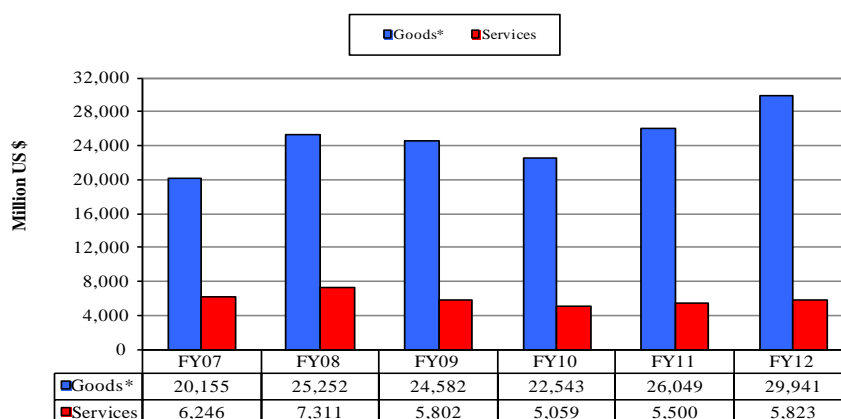
\* See "Introduction" for details:

Table 1(b) : Key Indicators of Import of Goods and Services

(Million US\$)

March 2012	3,599
February 2012	4,365
% Change during March 2012 over February 2012	-17.5
March 2011	3,976
% Change during March 2012 over March 2011	-9.5
July-March 2011-12	35,764
July-March 2010-11	31,549
% Change during July-March 2011-12 over July-March 2010-11	13.4
Monthly average during July-March 2011-12	3,974
Monthly average during July-March 2010-11	3,505
FY11	43,580
FY10	38,128
% Change during FY11 over FY10	14.3
Monthly average during FY11	3,632
Monthly average during FY10	3,177

Figure 1. Import During Jul-Mar

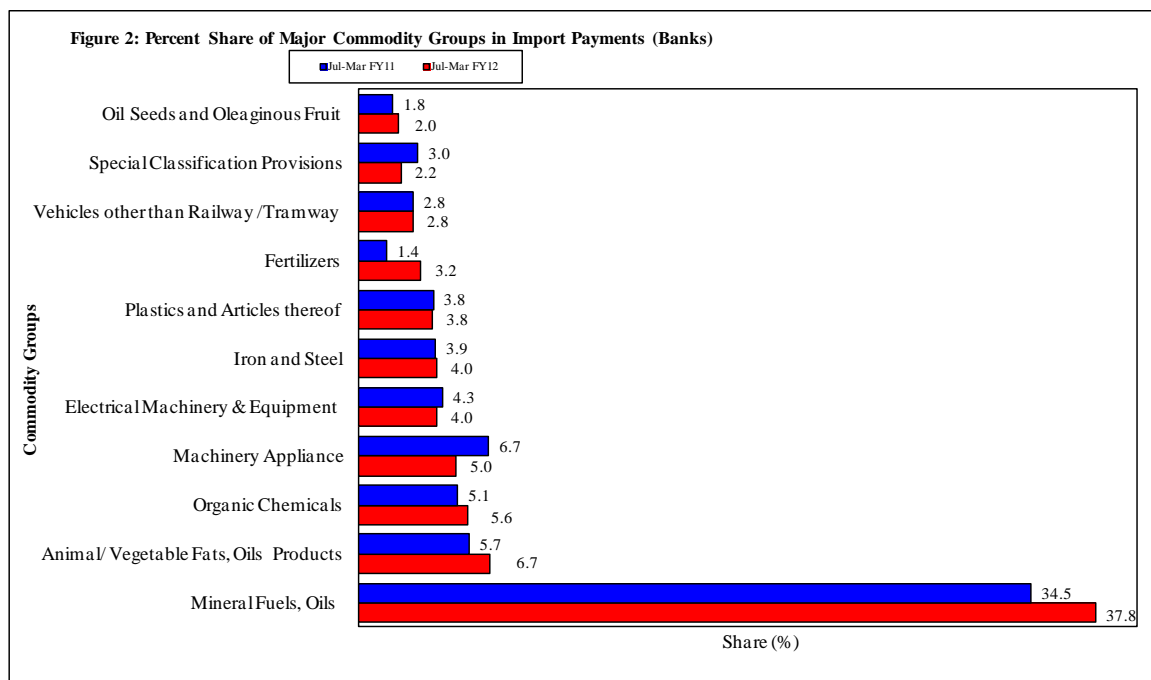


\*The data is import of goods based on Balance of Payments Manual 5 (BPM 5).

**Table 2: Import Payments by Major Groups of Goods & Services**

(Amount in Million)

Goods/ Services	March			July-March		% Change
	2012	2012	2011	2011-12	2010-11	
	Pak Rs.	US \$				
Goods						
I. Import Payments (Banks)	265,878	2,931	3,389	29,566	26,545	11.4
Mineral Fuels, Oils and Their Distillation Product	88,109	971	1,348	11,187	9,165	22.1
Animal or Vegetable Fats, Oils & Cleavage Products	10,813	119	143	1,981	1,504	31.7
Organic Chemicals	15,926	176	199	1,647	1,349	22.1
Nuclear Reactors, Boilers, Machinery and Appliance	14,555	160	181	1,483	1,771	-16.2
Electrical Machinery & Equipment and Parts thereof	14,580	161	135	1,188	1,140	4.2
Iron and Steel	10,423	115	103	1,186	1,045	13.5
Plastics and Articles thereof	12,834	141	129	1,116	1,014	10.1
Fertilizers	4,997	55	60	947	381	148.6
Vehicles other than Railway /Tramway Rolling Stock	7,435	82	85	821	740	10.9
Special Classification Provisions	6,791	75	80	639	803	-20.4
Oil Seeds and Oleaginous Fruit	4,393	48	33	602	466	29.2
Ships, Boats and Floating Structures	10,449	115	15	516	362	42.6
Man-Made Staple Fibers	4,466	49	74	453	427	6.1
Miscellaneous Chemical Products	3,695	41	53	416	385	8.0
Man-Made Filaments	4,464	49	51	415	383	8.3
Organic or Inorganic Compounds of Precious Metals	4,166	46	30	386	327	18.1
Cotton	3,983	44	189	382	854	-55.3
Edible Vegetables	4,077	45	38	379	399	-4.9
All Others	39,719	438	443	3,821	4,031	-5.2
II. Freight & Insurance	15,953	176	271	1,774	2,124	-16.5
III. Other Import Unaccounted by Banks	14,343	158	140	1,859	1,377	35.0
(A) Import General Merchandise (I-II+III)	264,268	2,913	3,258	29,651	25,799	14.9
(B) Other Import under BPM5*	2,442	27	34	290	250	15.8
(C) Import of Goods (A+B)	266,710	2,940	3,292	29,941	26,049	14.9
Services						
Transportation	23,279	256	356	2,659	2,907	-8.5
Travel	11,637	129	69	951	699	36.0
Communication Services	2,564	28	18	131	132	-1.3
Construction Services	6	0	3	52	20	160.9
Insurance Services	1,387	15	16	184	117	57.9
Financial Services	931	10	10	83	81	2.9
Computer & Information Services	1,461	16	23	122	119	2.2
Royalties & License fees	1,156	13	8	100	85	17.7
Other Business Services	10,670	118	134	920	868	6.0
Personal, cultural & recreational Services	10	0	0	2	7	-66.0
Government Services	6,677	74	47	619	465	33.2
(D) Total Import of Services	59,779	659	684	5,823	5,500	5.9
Total Import of Goods & Services (C+D)	326,489	3,599	3,976	35,764	31,549	13.4



Note: - The share is based on the share of commodities in Import Payments through Banks

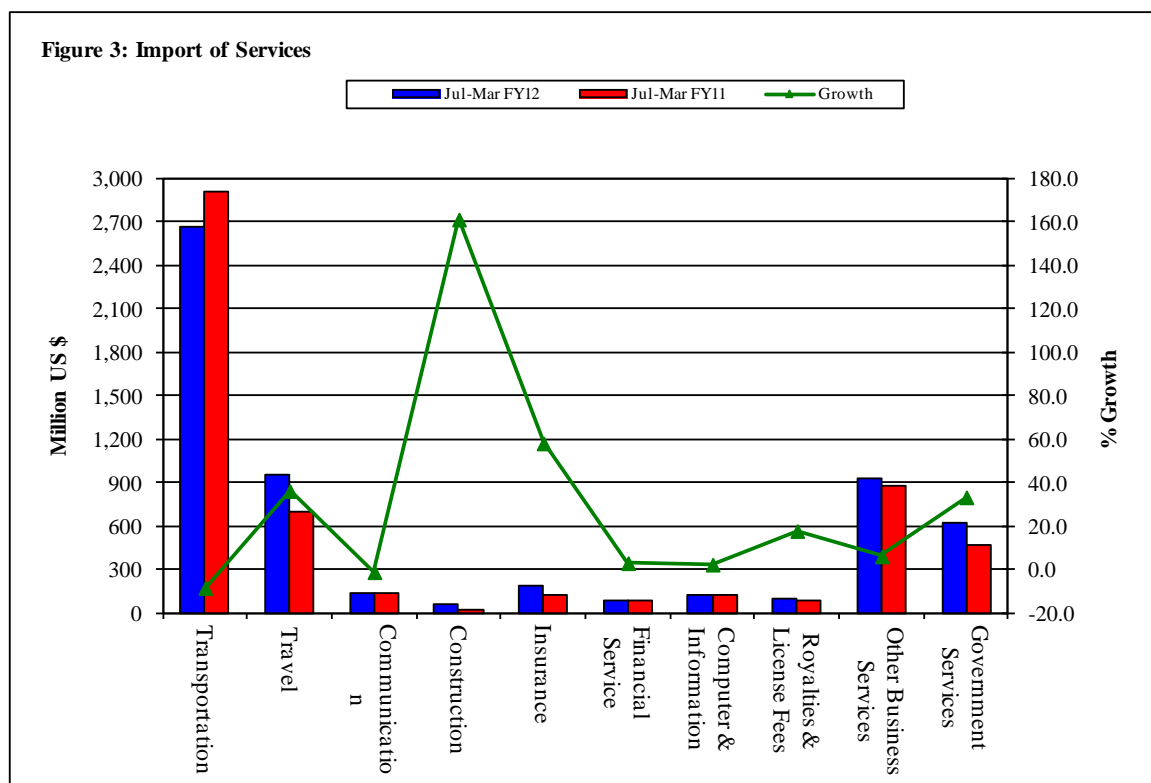
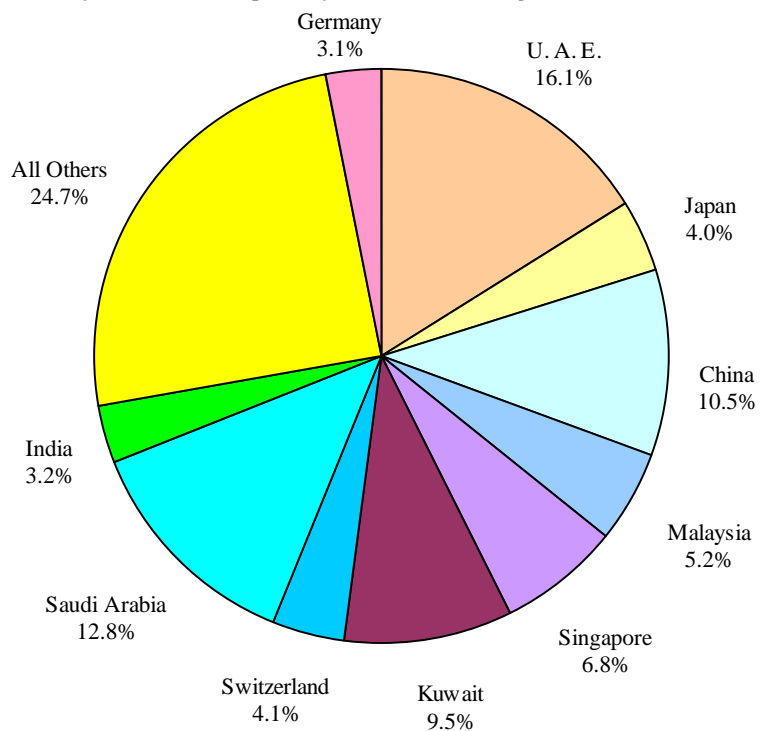


Table 3: Import of Goods &amp; Services by Major Countries

(Amount in Million)

Table 3: Import of Goods & Services by Major Countries				(Amount in Million)		
Country	March			July- March		% Change
	2012	2012	2011	2011-12	2010-11	
	Pak Rs.	US \$				
<b>Goods</b>						
I. Import Payments (Banks)	265,878	2,931	3,389	29,566	26,545	11.4
U. A. E.	55,522	612	543	4,759	4,227	12.6
Saudi Arabia	23,450	259	466	3,796	3,123	21.5
China	35,323	389	333	3,097	3,026	2.4
Kuwait	12,146	134	213	2,798	1,977	41.5
Singapore	21,102	233	216	2,023	1,899	6.5
Malaysia	9,108	100	126	1,529	1,297	17.9
Switzerland	8,063	89	113	1,200	752	59.4
Japan	11,811	130	236	1,195	1,105	8.1
India	12,419	137	216	956	1,178	-18.9
Germany	7,412	82	78	924	694	33.1
U. S. A.	6,256	69	118	572	824	-30.6
U. K.	4,625	51	38	494	492	0.4
South Korea	4,338	48	56	487	395	23.4
Indonesia	4,181	46	45	466	296	57.1
Thailand	3,501	39	47	438	394	11.4
All Others	46,620	514	543	4,833	4,864	-0.6
II. Freight & Insurance	15,953	176	271	1,774	2,124	-16.5
III. Other Import Unaccounted by Banks	14,343	158	140	1,859	1,377	35.0
(A) Import General Merchandise (I-II+III)	264,268	2,913	3,258	29,651	25,799	14.9
(B) Other Import under BPM5*	2,442	27	34	290	250	15.8
(C) Import of Goods (A+B)	266,710	2,940	3,292	29,941	26,049	14.9
<b>Services</b>						
U. S. A.	7,965	88	113	660	720	-8.4
U. A. E.	6,463	71	95	618	644	-4.1
China	2,997	33	45	420	404	4.0
Saudi Arabia	2,224	25	49	411	415	-1.0
U. K.	3,604	40	39	342	386	-11.2
Japan	1,465	16	30	190	157	21.2
Singapore	1,836	20	24	190	237	-19.9
Kuwait	820	9	19	185	174	6.3
Germany	1,689	19	15	149	122	22.5
Malaysia	672	7	14	124	131	-5.3
Switzerland	992	11	11	119	97	21.9
Thailand	779	9	9	100	82	22.1
Hongkong	541	6	8	88	75	18.2
France	457	5	7	62	76	-18.7
India	805	9	18	59	98	-40.5
All Other	26,470	292	187	2,106	1,682	25.2
(D) Total Import of Services	59,779	659	684	5,823	5,500	5.9
Total Import of Goods & Services (C+D)	326,489	3,599	3,976	35,764	31,549	13.4

**Figure 4: % Share of Major Countries in Import Payments (Banks) During Jul-Mar FY12**

Note: % Share is based on Import Payments through Banks

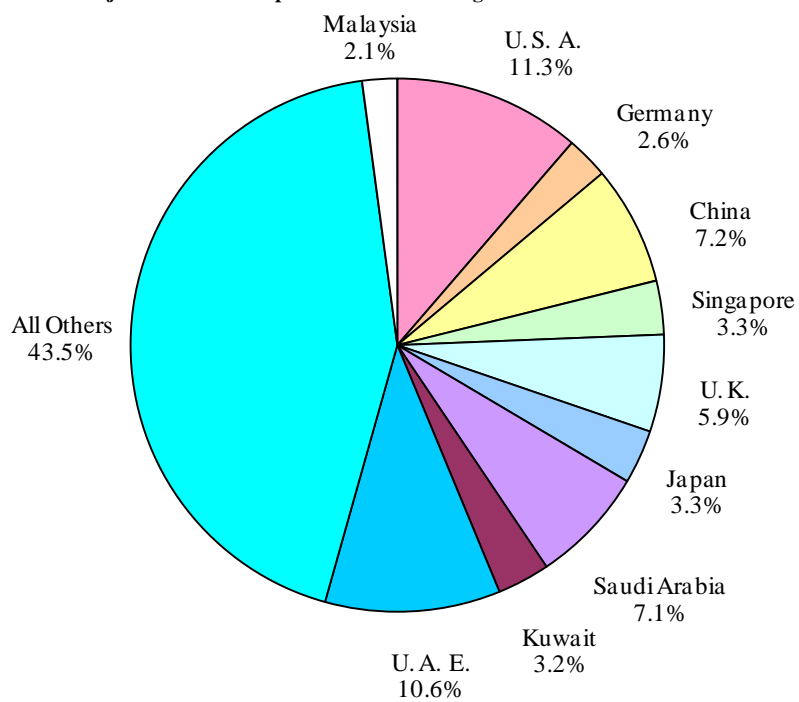
**Figure 5: % Share of Major Countries in Import of Services During Jul-Mar FY12**

Figure 6: Annual Import of Goods &amp; Services from FY02 to FY11

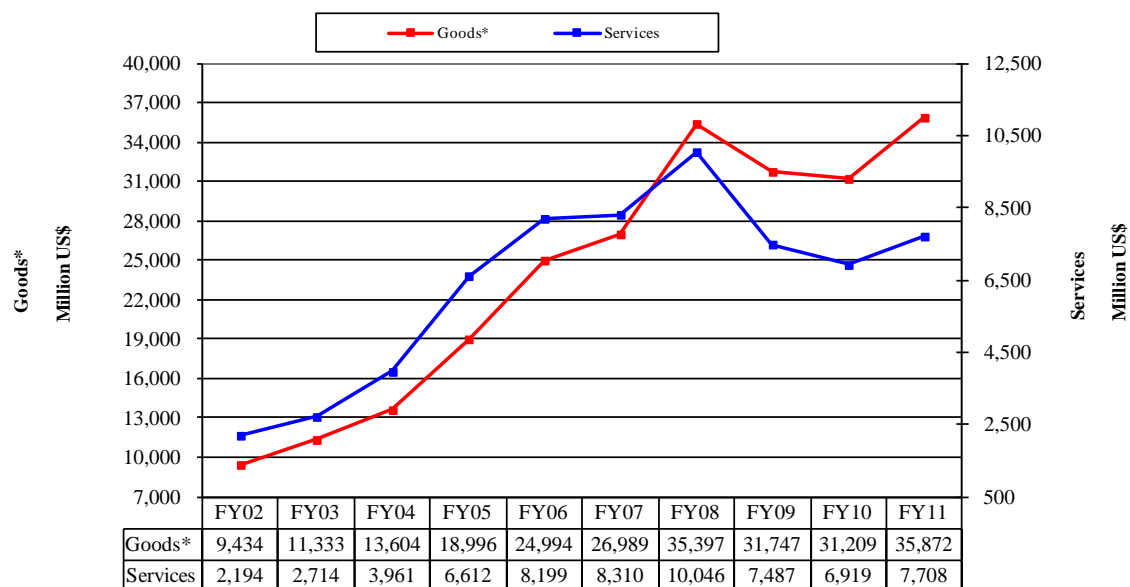
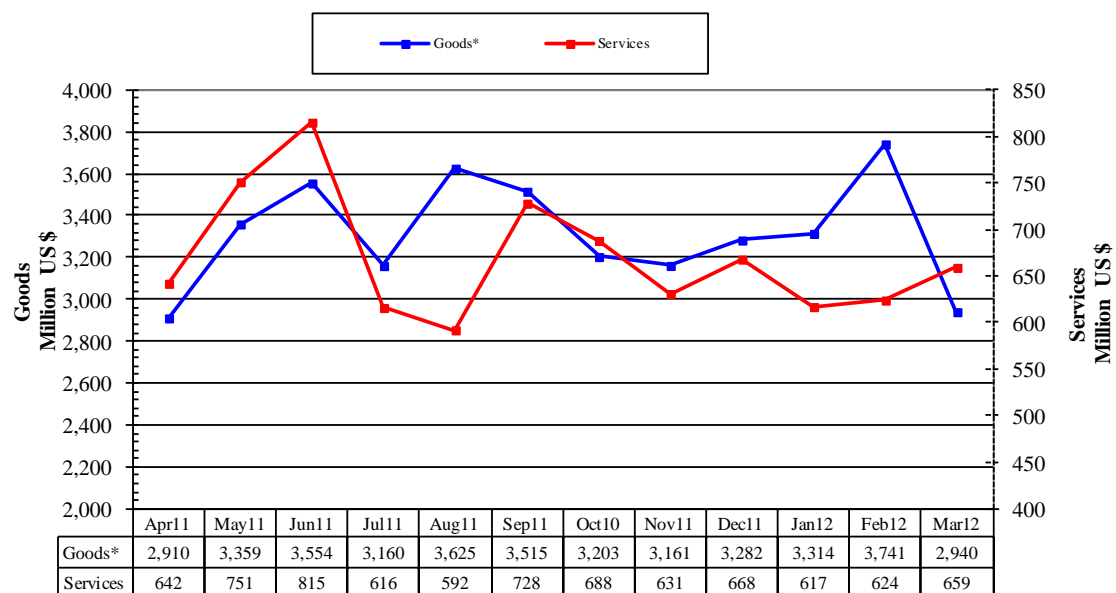


Figure 7: Monthly Imports of Goods &amp; Services



\* The data before FY05 is import general merchandise based on Balance of Payments Manual 4 (BPM 4) and onward on Balance of Payments Manual 5 (BPM 5).

Table 4: Annual, Quarterly &amp; Monthly Import of Goods\*\*

(Million US\$)

Period	FY03	FY04	FY05	FY06	FY07	FY08	FY09	FY10	FY11	FY12
Annual	11,333	13,604	18,996	24,994	26,989	35,397	31,747	31,209	35,872	29,941*
Growth (%)	20.1	20.0	39.6	31.6	8.0	31.2	-10.3	-1.7	14.9	
<b>Quarter-wise</b>										
Quarter-I	2,769 (24.4)	3,014 (22.2)	4,175 (22.0)	5,925 (23.7)	6,933 (25.7)	6,940 (19.6)	10,230 (32.2)	7,485 (24.0)	8,257 (23.0)	10,300
Quarter-II	2,853 (25.2)	3,204 (23.6)	5,047 (26.6)	6,074 (24.3)	6,768 (25.1)	8,548 (24.1)	8,077 (25.4)	7,691 (24.6)	8,627 (24.0)	9,646
Quarter-III	2,744 (24.2)	3,602 (26.5)	4,801 (25.3)	6,261 (25.1)	6,454 (23.9)	9,765 (27.6)	6,275 (19.8)	7,367 (23.6)	9,165 (25.5)	9,995
Quarter-IV	2,967 (26.2)	3,784 (27.8)	4,973 (26.2)	6,734 (26.9)	6,834 (25.3)	10,144 (28.7)	7,165 (22.6)	8,666 (27.8)	9,824 (27.4)	
<b>Month-wise</b>										
July	943 (8.3)	1,020 (7.5)	1,440 (7.6)	1,772 (7.1)	2,418 (9.0)	2,411 (6.8)	3,373 (10.6)	2,818 (9.0)	2,925 (8.2)	3,160
August	974 (8.6)	930 (6.8)	1,311 (6.9)	2,087 (8.4)	2,308 (8.6)	2,259 (6.4)	3,162 (10.0)	2,189 (7.0)	2,933 (8.2)	3,625
September	852 (7.5)	1,064 (7.8)	1,424 (7.5)	2,066 (8.3)	2,207 (8.2)	2,269 (6.4)	3,694 (11.6)	2,478 (7.9)	2,399 (6.7)	3,515
October	899 (7.9)	1,057 (7.8)	1,616 (8.5)	2,055 (8.2)	2,205 (8.2)	2,604 (7.4)	3,243 (10.2)	2,756 (8.8)	2,620 (7.3)	3,203
November	920 (8.1)	876 (6.4)	1,745 (9.2)	2,059 (8.2)	2,161 (8.0)	2,963 (8.4)	2,233 (7.0)	2,194 (7.0)	2,811 (7.8)	3,161
December	1,034 (9.1)	1,271 (9.3)	1,686 (8.9)	1,960 (7.8)	2,402 (8.9)	2,980 (8.4)	2,601 (8.2)	2,741 (8.8)	3,196 (8.9)	3,282
January	924 (8.2)	1,168 (8.6)	1,427 (7.5)	2,070 (8.3)	2,105 (7.8)	3,329 (9.4)	2,140 (6.7)	2,536 (8.1)	2,797 (7.8)	3,314
February	827 (7.3)	1,212 (8.9)	1,591 (8.4)	1,886 (7.5)	2,226 (8.2)	2,913 (8.2)	1,884 (5.9)	2,345 (7.5)	3,076 (8.6)	3,741
March	993 (8.8)	1,222 (9.0)	1,783 (9.4)	2,305 (9.2)	2,123 (7.9)	3,523 (10.0)	2,251 (7.1)	2,486 (8.0)	3,292 (9.2)	2,940
April	979 (8.6)	1,230 (9.0)	1,508 (7.9)	1,682 (6.7)	2,185 (8.1)	3,391 (9.6)	2,370 (7.5)	2,916 (9.3)	2,910 (8.1)	
May	959 (8.5)	1,166 (8.6)	1,741 (9.2)	2,361 (9.4)	2,214 (8.2)	3,246 (9.2)	2,002 (6.3)	2,638 (8.5)	3,359 (9.4)	
June	1,029 (9.1)	1,388 (10.2)	1,724 (9.1)	2,691 (10.8)	2,435 (9.0)	3,507 (9.9)	2,793 (8.8)	3,112 (10.0)	3,554 (9.9)	

Notes: 1. Figures in parentheses are percentage to annual import payments of the respective years

2. Due to rounding off separate items, totals may show minor differences

\* The total include figures for July to current month

\*\* The data before FY05 is import general merchandise based on Balance of Payments Manual 4 (BPM 4) and onward on Balance of Payments Manual 5 (BPM 5).

**Table 5: Annual, Quarterly & Monthly Import of Services**

(Million US\$)

Period	FY03	FY04	FY05	FY06	FY07	FY08	FY09	FY10	FY11	FY12
Annual	2,714	3,961	6,612	8,199	8,310	10,046	7,487	6,919	7,708	5,823*
Growth (%)	23.7	45.9	66.9	24.0	1.4	20.9	-25.5	-7.6	11.4	
<b><u>Quarter-wise</u></b>										
Quarter-I	579 (21.3)	799 (20.2)	1,449 (21.9)	1,953 (23.8)	2,039 (24.5)	2,194 (21.8)	2,392 (31.9)	1,585 (22.9)	1,722 (22.3)	1,936
Quarter-II	586 (21.6)	945 (23.9)	1,669 (25.2)	2,061 (25.1)	2,193 (26.4)	2,548 (25.4)	2,021 (27.0)	1,892 (27.3)	1,941 (25.2)	1,987
Quarter-III	649 (23.9)	1,097 (27.7)	1,764 (26.7)	2,061 (25.1)	2,014 (24.2)	2,569 (25.6)	1,389 (18.6)	1,582 (22.9)	1,837 (23.8)	1,900
Quarter-IV	900 (33.2)	1,120 (28.3)	1,730 (26.2)	2,124 (25.9)	2,064 (24.8)	2,735 (27.2)	1,685 (22.5)	1,860 (26.9)	2,208 (28.6)	
<b><u>Month-wise</u></b>										
July	181 (6.7)	305 (7.7)	432 (6.5)	573 (7.0)	735 (8.8)	755 (7.5)	743 (9.9)	568 (8.2)	565 (7.3)	616
August	184 (6.8)	207 (5.2)	473 (7.2)	735 (9.0)	619 (7.4)	757 (7.5)	816 (10.9)	489 (7.1)	561 (7.3)	592
September	214 (7.9)	287 (7.2)	544 (8.2)	645 (7.9)	685 (8.2)	682 (6.8)	833 (11.1)	528 (7.6)	596 (7.7)	728
October	189 (7.0)	327 (8.3)	525 (7.9)	626 (7.6)	645 (7.8)	782 (7.8)	839 (11.2)	691 (10.0)	702 (9.1)	688
November	195 (7.2)	238 (6.0)	489 (7.4)	674 (8.2)	782 (9.4)	963 (9.6)	577 (7.7)	562 (8.1)	597 (7.7)	631
December	202 (7.4)	380 (9.6)	655 (9.9)	761 (9.3)	766 (9.2)	803 (8.0)	605 (8.1)	639 (9.2)	642 (8.3)	668
January	248 (9.1)	378 (9.5)	539 (8.2)	672 (8.2)	683 (8.2)	894 (8.9)	448 (6.0)	500 (7.2)	583 (7.6)	617
February	185 (6.8)	339 (8.6)	561 (8.5)	622 (7.6)	633 (7.6)	751 (7.5)	458 (6.1)	495 (7.2)	570 (7.4)	624
March	216 (8.0)	380 (9.6)	664 (10.0)	767 (9.4)	698 (8.4)	924 (9.2)	483 (6.5)	587 (8.5)	684 (8.9)	659
April	331 (12.2)	379 (9.6)	610 (9.2)	617 (7.5)	680 (8.2)	999 (9.9)	542 (7.2)	618 (8.9)	642 (8.3)	
May	276 (10.2)	355 (9.0)	582 (8.8)	744 (9.1)	657 (7.9)	797 (7.9)	523 (7.0)	582 (8.4)	751 (9.7)	
June	293 (10.8)	386 (9.7)	538 (8.1)	763 (9.3)	727 (8.7)	939 (9.3)	620 (8.3)	660 (9.5)	815 (10.6)	

Notes: 1. Figures in parentheses are percentage to annual import payments of the respective years

2. Due to rounding off separate items, totals may show minor differences

\* The total include figures for July to current month