

S U M M A R Y

Table 1(a) : Monthly Import of Goods & Services

(Million US\$)

Items	February	
	2012	2011
I. Import Payments (Banks)	3,595	3,194
II. Freight & Insurance	216	256
III. Other Import unaccounted by Banks	155	120
Unclassified Imports	91	1
Imports NRI, Sale of Duty Free Shops	28	8
Imports under Foreign Economic Assistance	14	110
Land borne Imports with Afghanistan	14	10
PIA & PNSC	13	4
Capital Equipment	0	0
Cost of Imports (Ex. Cos.)	0	0
Refund & Rebate	-5	-13
Import from EPZ	0	0
Imports from Accounts Abroad	0	0
(A) Import General Merchandise (I-II+III)	3,534	3,059
(B) Other Import under BPM5*	28	17
(C) Import of Goods (A+B)	3,562	3,076
(D) Import of Services	621	570
(E) Import of Goods & Services (C+D)	4,183	3,646

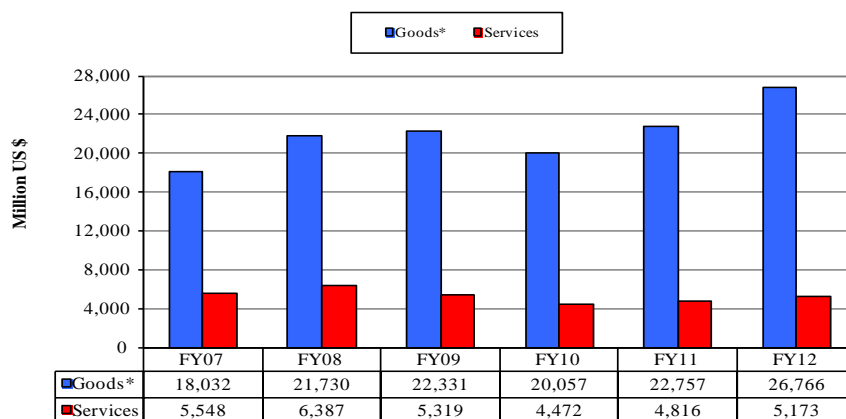
* See "Introduction" for details:

Table 1(b) : Key Indicators of Import of Goods and Services

(Million US\$)

February 2012	4,183
January 2012	3,931
% Change during February 2012 over January 2012	6.4
February 2011	3,646
% Change during February 2012 over February 2011	14.7
July-February 2011-12	31,939
July-February 2010-11	27,573
% Change during July-February 2011-12 over July-February 2010-11	15.8
Monthly average during July-February 2011-12	3,992
Monthly average during July-February 2010-11	3,447
FY11	43,580
FY10	38,128
% Change during FY11 over FY10	14.3
Monthly average during FY11	3,632
Monthly average during FY10	3,177

Figure 1. Import During Jul-Feb

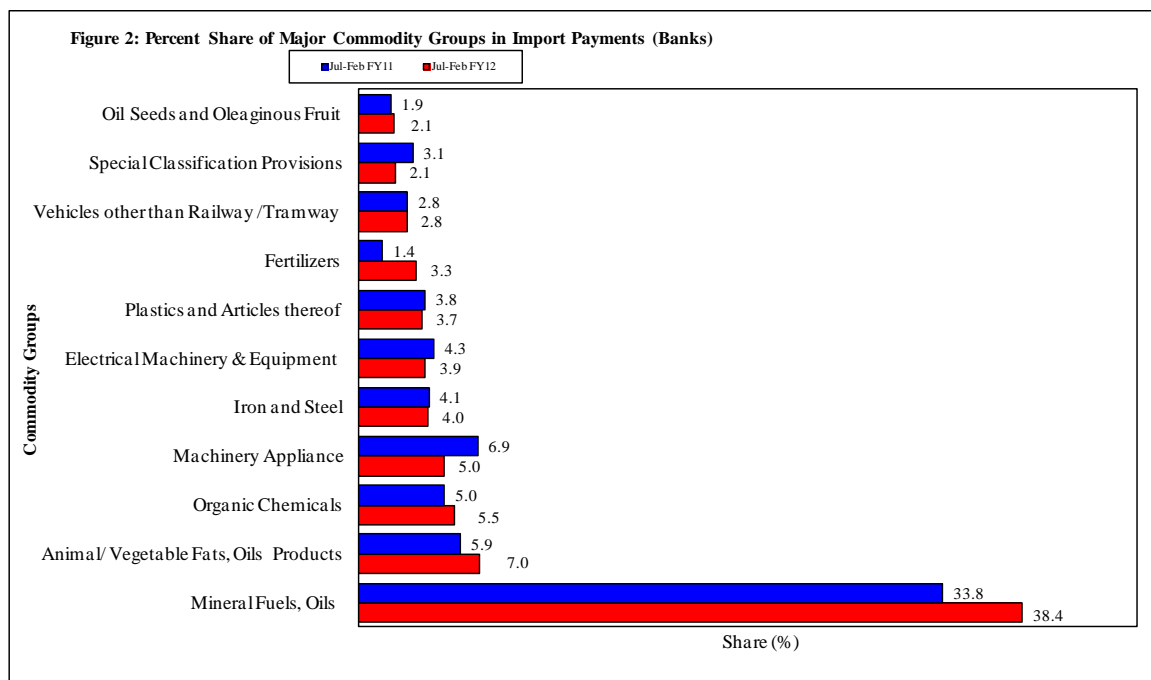


*The data is import of goods based on Balance of Payments Manual 5 (BPM 5).

Table 2: Import Payments by Major Groups of Goods & Services

(Amount in Million)

Goods/ Services	February			July-February		% Change
	2012	2012	2011	2011-12	2010-11	
	Pak Rs.	US \$				
Goods						
I. Import Payments (Banks)	325,793	3,595	3,194	26,635	23,156	15.0
Mineral Fuels, Oils and Their Distillation Product	156,788	1,730	1,366	10,216	7,817	30.7
Animal or Vegetable Fats, Oils & Cleavage Products	15,230	168	136	1,862	1,361	36.8
Organic Chemicals	12,605	139	162	1,472	1,149	28.1
Nuclear Reactors, Boilers, Machinery and Appliance	15,111	167	165	1,322	1,590	-16.8
Iron and Steel	11,611	128	81	1,071	942	13.8
Electrical Machinery & Equipment and Parts thereof	9,138	101	96	1,027	1,005	2.2
Plastics and Articles thereof	11,296	125	115	975	885	10.2
Fertilizers	3,821	42	20	892	321	177.8
Vehicles other than Railway /Tramway Rolling Stock	7,413	82	77	739	656	12.7
Special Classification Provisions	7,230	80	77	564	723	-22.0
Oil Seeds and Oleaginous Fruit	8,509	94	75	554	433	28.0
Man-Made Staple Fibers	3,631	40	45	404	353	14.5
Ships, Boats and Floating Structures	7,701	85	64	401	347	15.5
Miscellaneous Chemical Products	3,760	41	45	375	332	12.9
Man-Made Filaments	3,565	39	44	366	332	10.1
Organic or Inorganic Compounds of Precious Metals	3,950	44	31	340	297	14.6
Cotton	4,498	50	187	338	665	-49.1
Edible Vegetables	3,352	37	36	334	361	-7.5
All Others	36,582	404	372	3,384	3,588	-5.7
II. Freight & Insurance	19,548	216	256	1,598	1,852	-13.7
III. Other Import Unaccounted by Banks	13,928	155	120	1,462	1,237	18.1
(A) Import General Merchandise (I-II+III)	320,173	3,534	3,059	26,499	22,541	17.6
(B) Other Import under BPM5*	2,508	28	17	267	216	23.5
(C) Import of Goods (A+B)	322,681	3,562	3,076	26,766	22,757	17.6
Services						
Transportation	26,311	291	329	2,419	2,551	-5.2
Travel	8,172	90	66	823	630	30.7
Communication Services	797	9	6	102	114	-10.2
Construction Services	347	4	0	52	17	209.2
Insurance Services	1,471	16	11	167	101	64.7
Financial Services	2,615	29	9	90	71	26.8
Computer & Information Services	1,303	14	17	106	96	9.8
Royalties & License fees	1,063	12	12	87	77	13.0
Other Business Services	9,963	110	77	802	734	9.2
Personal, cultural & recreational Services	4	0	0	2	7	-67.4
Government Services	4,155	46	43	523	418	25.1
(D) Total Import of Services	56,201	621	570	5,173	4,816	7.4
Total Import of Goods & Services (C+D)	378,882	4,183	3,646	31,939	27,573	15.8



Note: - The share is based on the share of commodities in Import Payments through Banks

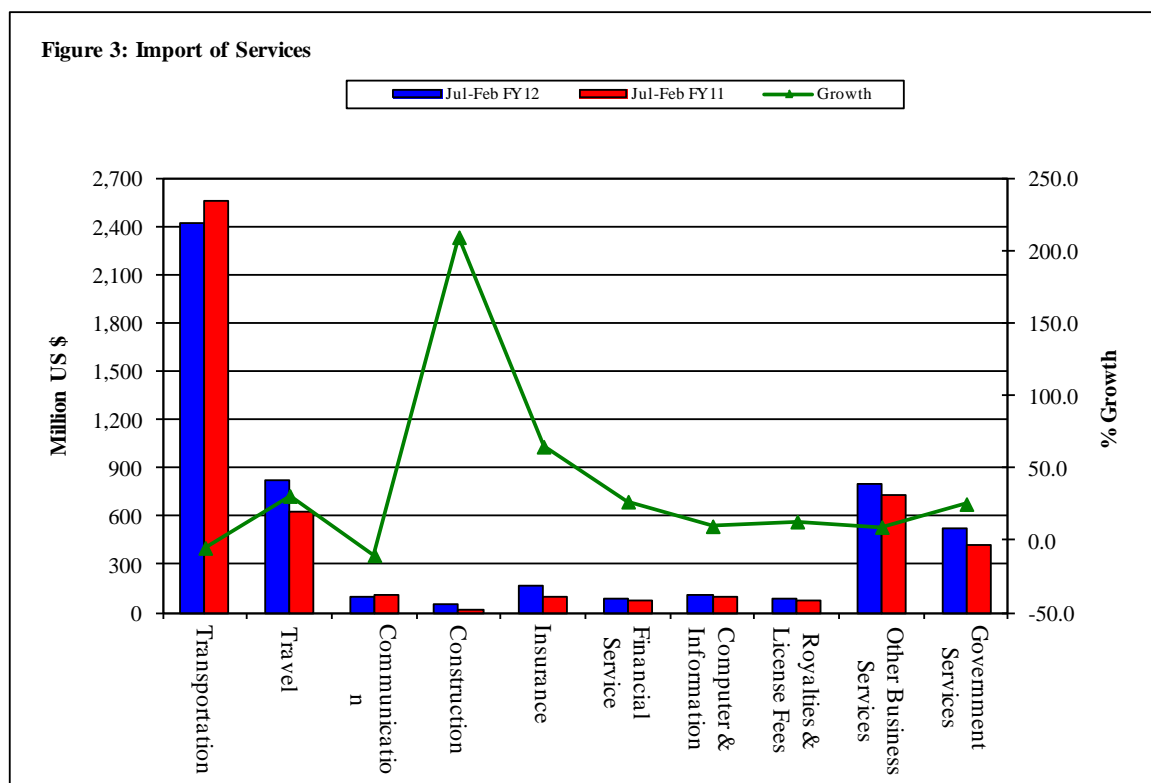
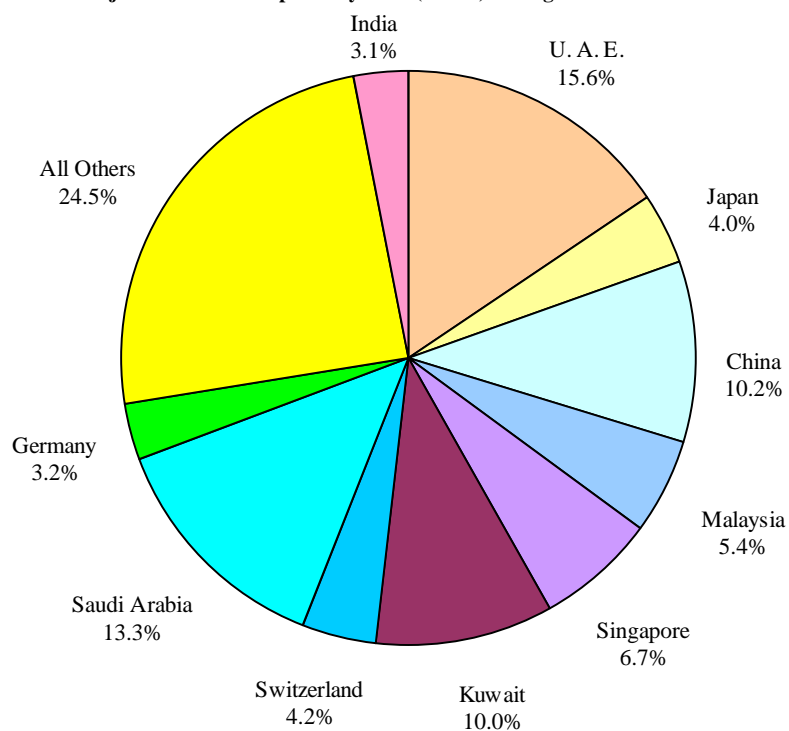


Table 3: Import of Goods & Services by Major Countries (Amount in Million)

Table 3: Import of Goods & Services by Major Countries						
Country	February			July- February		%
	2012	2012	2011	2011-12	2010-11	Change
	Pak Rs.	US \$				
Goods						
I. Import Payments (Banks)	325,793	3,595	3,194	26,635	23,156	15.0
U. A. E.	52,815	583	443	4,146	3,683	12.6
Saudi Arabia	46,739	516	539	3,538	2,657	33.2
China	24,641	272	313	2,708	2,693	0.6
Kuwait	50,517	557	342	2,664	1,764	51.1
Singapore	25,590	282	211	1,790	1,683	6.3
Malaysia	11,741	130	119	1,428	1,171	22.0
Switzerland	9,585	106	73	1,111	640	73.7
Japan	11,052	122	104	1,065	869	22.5
Germany	11,052	122	79	842	615	36.8
India	9,198	102	190	819	963	-14.9
U. S. A.	4,479	49	125	503	706	-28.7
U. K.	4,373	48	51	443	454	-2.4
South Korea	4,413	49	51	440	339	29.7
Indonesia	4,732	52	31	420	251	66.9
Thailand	3,994	44	47	400	346	15.4
All Others	50,872	561	476	4,319	4,321	-0.1
II. Freight & Insurance	19,548	216	256	1,598	1,852	-13.7
III. Other Import Unaccounted by Banks	13,928	155	120	1,462	1,237	18.1
(A) Import General Merchandise (I-II+III)	320,173	3,534	3,059	26,499	22,541	17.6
(B) Other Import under BPM5*	2,508	28	17	267	216	23.5
(C) Import of Goods (A+B)	322,681	3,562	3,076	26,766	22,757	17.6
Services						
U. S. A.	7,821	86	66	580	607	-4.5
U. A. E.	6,261	69	63	523	550	-4.8
Saudi Arabia	4,206	47	51	417	341	22.3
China	3,311	37	39	328	359	-8.6
U. K.	2,657	29	26	299	347	-13.8
Kuwait	3,220	36	28	176	156	13.0
Singapore	2,039	23	30	170	213	-20.0
Japan	1,090	12	21	162	127	27.0
Germany	1,948	22	11	130	107	21.3
Malaysia	960	11	11	117	116	0.3
Switzerland	1,118	12	9	108	86	25.7
Thailand	892	10	10	91	72	25.8
Hongkong	1,238	14	12	78	67	16.7
France	1,070	12	8	57	69	-16.8
India	681	8	16	50	81	-38.3
All Other	17,690	195	168	1,887	1,519	24.3
(D) Total Import of Services	56,201	621	570	5,173	4,816	7.4
Total Import of Goods & Services (C+D)	378,882	4,183	3,646	31,939	27,573	15.8

Figure 4: % Share of Major Countries in Import Payments (Banks) During Jul-Feb FY12

Note: % Share is based on Import Payments through Banks

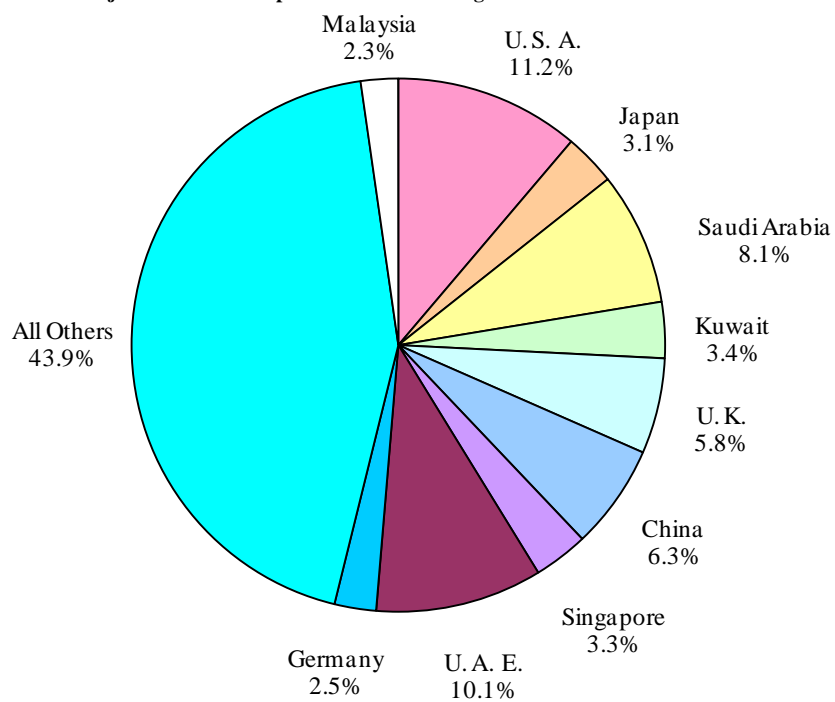
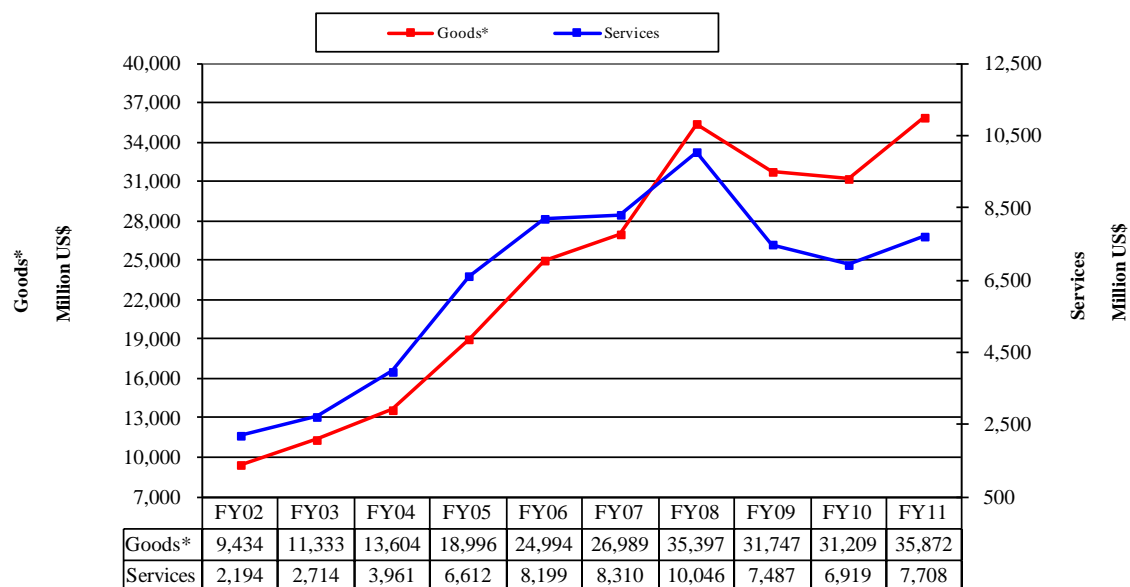
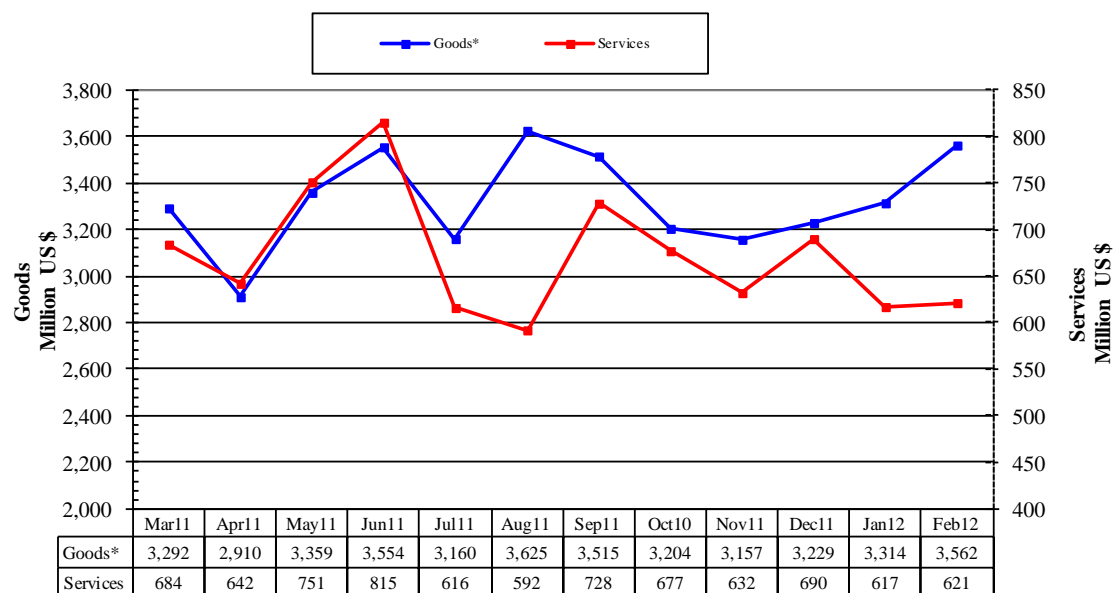
Figure 5: % Share of Major Countries in Import of Services During Jul-Feb FY12

Figure 6: Annual Import of Goods & Services from FY02 to FY11**Figure 7: Monthly Imports of Goods & Services**

* The data before FY05 is import general merchandise based on Balance of Payments Manual 4 (BPM 4) and onward on Balance of Payments Manual 5 (BPM 5).

Table 4: Annual, Quarterly & Monthly Import of Goods**

(Million US\$)

Period	FY03	FY04	FY05	FY06	FY07	FY08	FY09	FY10	FY11	FY12
Annual	11,333	13,604	18,996	24,994	26,989	35,397	31,747	31,209	35,872	23,157*
Growth (%)	20.1	20.0	39.6	31.6	8.0	31.2	-10.3	-1.7	14.9	
Quarter-wise										
Quarter-I	2,769 (24.4)	3,014 (22.2)	4,175 (22.0)	5,925 (23.7)	6,933 (25.7)	6,940 (19.6)	10,230 (32.2)	7,485 (24.0)	8,257 (23.0)	10,300
Quarter-II	2,853 (25.2)	3,204 (23.6)	5,047 (26.6)	6,074 (24.3)	6,768 (25.1)	8,548 (24.1)	8,077 (25.4)	7,691 (24.6)	8,627 (24.0)	9,590
Quarter-III	2,744 (24.2)	3,602 (26.5)	4,801 (25.3)	6,261 (25.1)	6,454 (23.9)	9,765 (27.6)	6,275 (19.8)	7,367 (23.6)	9,165 (25.5)	
Quarter-IV	2,967 (26.2)	3,784 (27.8)	4,973 (26.2)	6,734 (26.9)	6,834 (25.3)	10,144 (28.7)	7,165 (22.6)	8,666 (27.8)	9,824 (27.4)	
Month-wise										
July	943 (8.3)	1,020 (7.5)	1,440 (7.6)	1,772 (7.1)	2,418 (9.0)	2,411 (6.8)	3,373 (10.6)	2,818 (9.0)	2,925 (8.2)	3,160
August	974 (8.6)	930 (6.8)	1,311 (6.9)	2,087 (8.4)	2,308 (8.6)	2,259 (6.4)	3,162 (10.0)	2,189 (7.0)	2,933 (8.2)	3,625
September	852 (7.5)	1,064 (7.8)	1,424 (7.5)	2,066 (8.3)	2,207 (8.2)	2,269 (6.4)	3,694 (11.6)	2,478 (7.9)	2,399 (6.7)	3,515
October	899 (7.9)	1,057 (7.8)	1,616 (8.5)	2,055 (8.2)	2,205 (8.2)	2,604 (7.4)	3,243 (10.2)	2,756 (8.8)	2,620 (7.3)	3,204
November	920 (8.1)	876 (6.4)	1,745 (9.2)	2,059 (8.2)	2,161 (8.0)	2,963 (8.4)	2,233 (7.0)	2,194 (7.0)	2,811 (7.8)	3,157
December	1,034 (9.1)	1,271 (9.3)	1,686 (8.9)	1,960 (7.8)	2,402 (8.9)	2,980 (8.4)	2,601 (8.2)	2,741 (8.8)	3,196 (8.9)	3,229
January	924 (8.2)	1,168 (8.6)	1,427 (7.5)	2,070 (8.3)	2,105 (7.8)	3,329 (9.4)	2,140 (6.7)	2,536 (8.1)	2,797 (7.8)	3,314
February	827 (7.3)	1,212 (8.9)	1,591 (8.4)	1,886 (7.5)	2,226 (8.2)	2,913 (8.2)	1,884 (5.9)	2,345 (7.5)	3,076 (8.6)	3,562
March	993 (8.8)	1,222 (9.0)	1,783 (9.4)	2,305 (9.2)	2,123 (7.9)	3,523 (10.0)	2,251 (7.1)	2,486 (8.0)	3,292 (9.2)	
April	979 (8.6)	1,230 (9.0)	1,508 (7.9)	1,682 (6.7)	2,185 (8.1)	3,391 (9.6)	2,370 (7.5)	2,916 (9.3)	2,910 (8.1)	
May	959 (8.5)	1,166 (8.6)	1,741 (9.2)	2,361 (9.4)	2,214 (8.2)	3,246 (9.2)	2,002 (6.3)	2,638 (8.5)	3,359 (9.4)	
June	1,029 (9.1)	1,388 (10.2)	1,724 (9.1)	2,691 (10.8)	2,435 (9.0)	3,507 (9.9)	2,793 (8.8)	3,112 (10.0)	3,554 (9.9)	

Notes: 1. Figures in parentheses are percentage to annual import payments of the respective years

2. Due to rounding off separate items, totals may show minor differences

* The total include figures for July to current month

** The data before FY05 is import general merchandise based on Balance of Payments Manual 4 (BPM 4) and onward on Balance of Payments Manual 5 (BPM 5).

Table 5: Annual, Quarterly & Monthly Import of Services

(Million US\$)

Period	FY03	FY04	FY05	FY06	FY07	FY08	FY09	FY10	FY11	FY12
Annual	2,714	3,961	6,612	8,199	8,310	10,046	7,487	6,919	7,708	4,540*
Growth (%)	23.7	45.9	66.9	24.0	1.4	20.9	-25.5	-7.6	11.4	
<u>Quarter-wise</u>										
Quarter-I	579 (21.3)	799 (20.2)	1,449 (21.9)	1,953 (23.8)	2,039 (24.5)	2,194 (21.8)	2,392 (31.9)	1,585 (22.9)	1,722 (22.3)	1,936
Quarter-II	586 (21.6)	945 (23.9)	1,669 (25.2)	2,061 (25.1)	2,193 (26.4)	2,548 (25.4)	2,021 (27.0)	1,892 (27.3)	1,941 (25.2)	1,999
Quarter-III	649 (23.9)	1,097 (27.7)	1,764 (26.7)	2,061 (25.1)	2,014 (24.2)	2,569 (25.6)	1,389 (18.6)	1,582 (22.9)	1,837 (23.8)	
Quarter-IV	900 (33.2)	1,120 (28.3)	1,730 (26.2)	2,124 (25.9)	2,064 (24.8)	2,735 (27.2)	1,685 (22.5)	1,860 (26.9)	2,208 (28.6)	
<u>Month-wise</u>										
July	181 (6.7)	305 (7.7)	432 (6.5)	573 (7.0)	735 (8.8)	755 (7.5)	743 (9.9)	568 (8.2)	565 (7.3)	616
August	184 (6.8)	207 (5.2)	473 (7.2)	735 (9.0)	619 (7.4)	757 (7.5)	816 (10.9)	489 (7.1)	561 (7.3)	592
September	214 (7.9)	287 (7.2)	544 (8.2)	645 (7.9)	685 (8.2)	682 (6.8)	833 (11.1)	528 (7.6)	596 (7.7)	728
October	189 (7.0)	327 (8.3)	525 (7.9)	626 (7.6)	645 (7.8)	782 (7.8)	839 (11.2)	691 (10.0)	702 (9.1)	677
November	195 (7.2)	238 (6.0)	489 (7.4)	674 (8.2)	782 (9.4)	963 (9.6)	577 (7.7)	562 (8.1)	597 (7.7)	632
December	202 (7.4)	380 (9.6)	655 (9.9)	761 (9.3)	766 (9.2)	803 (8.0)	605 (8.1)	639 (9.2)	642 (8.3)	690
January	248 (9.1)	378 (9.5)	539 (8.2)	672 (8.2)	683 (8.2)	894 (8.9)	448 (6.0)	500 (7.2)	583 (7.6)	617
February	185 (6.8)	339 (8.6)	561 (8.5)	622 (7.6)	633 (7.6)	751 (7.5)	458 (6.1)	495 (7.2)	570 (7.4)	621
March	216 (8.0)	380 (9.6)	664 (10.0)	767 (9.4)	698 (8.4)	924 (9.2)	483 (6.5)	587 (8.5)	684 (8.9)	
April	331 (12.2)	379 (9.6)	610 (9.2)	617 (7.5)	680 (8.2)	999 (9.9)	542 (7.2)	618 (8.9)	642 (8.3)	
May	276 (10.2)	355 (9.0)	582 (8.8)	744 (9.1)	657 (7.9)	797 (7.9)	523 (7.0)	582 (8.4)	751 (9.7)	
June	293 (10.8)	386 (9.7)	538 (8.1)	763 (9.3)	727 (8.7)	939 (9.3)	620 (8.3)	660 (9.5)	815 (10.6)	

Notes: 1. Figures in parentheses are percentage to annual import payments of the respective years

2. Due to rounding off separate items, totals may show minor differences

* The total include figures for July to current month