

## SUMMARY

Table 1(a) : Monthly Import of Goods &amp; Services

(Million US\$)

Items	April	
	2012	2011
I. Import Payments (Banks)	3,221	2,962
II. Freight & Insurance	193	237
III. Other Import unaccounted by Banks	72	161
Unclassified Imports	17	11
Imports NRI, Sale of Duty Free Shops	25	12
Imports under Foreign Economic Assistance	3	130
Land borne Imports with Afghanistan	13	12
PIA & PNSC	19	5
Capital Equipment	0	0
Cost of Imports (Ex. Cos.)	0	0
Refund & Rebate	-6	-11
Import from EPZ	0	0
Imports from Accounts Abroad	0	2
(A) Import General Merchandise (I-II+III)	3,099	2,886
(B) Other Import under BPM5*	48	24
(C) Import of Goods (A+B)	3,147	2,910
(D) Import of Services	616	642
(E) Import of Goods & Services (C+D)	3,762	3,553

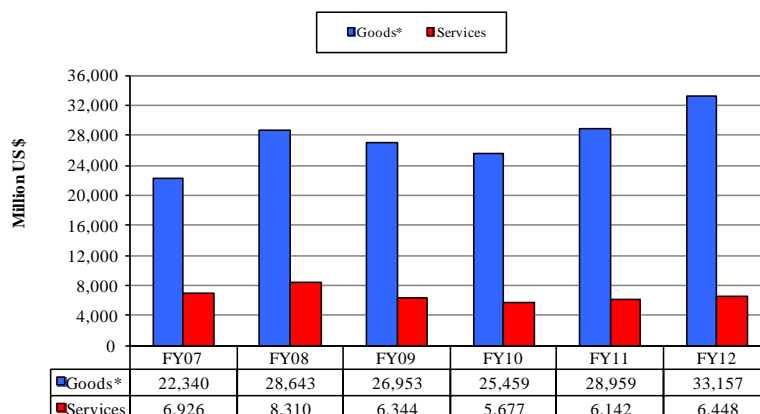
\* See "Introduction" for details:

Table 1(b) : Key Indicators of Import of Goods and Services

(Million US\$)

April 2012	3,762
March 2012	3,677
% Change during April 2012 over March 2012	2.3
April 2011	3,553
% Change during April 2012 over April 2011	5.9
July-April 2011-12	39,605
July-April 2010-11	35,101
% Change during July-April 2011-12 over July-April 2010-11	12.8
Monthly average during July-April 2011-12	3,960
Monthly average during July-April 2010-11	3,510
FY11	43,580
FY10	38,128
% Change during FY11 over FY10	14.3
Monthly average during FY11	3,632
Monthly average during FY10	3,177

Figure 1. Import During Jul-Apr

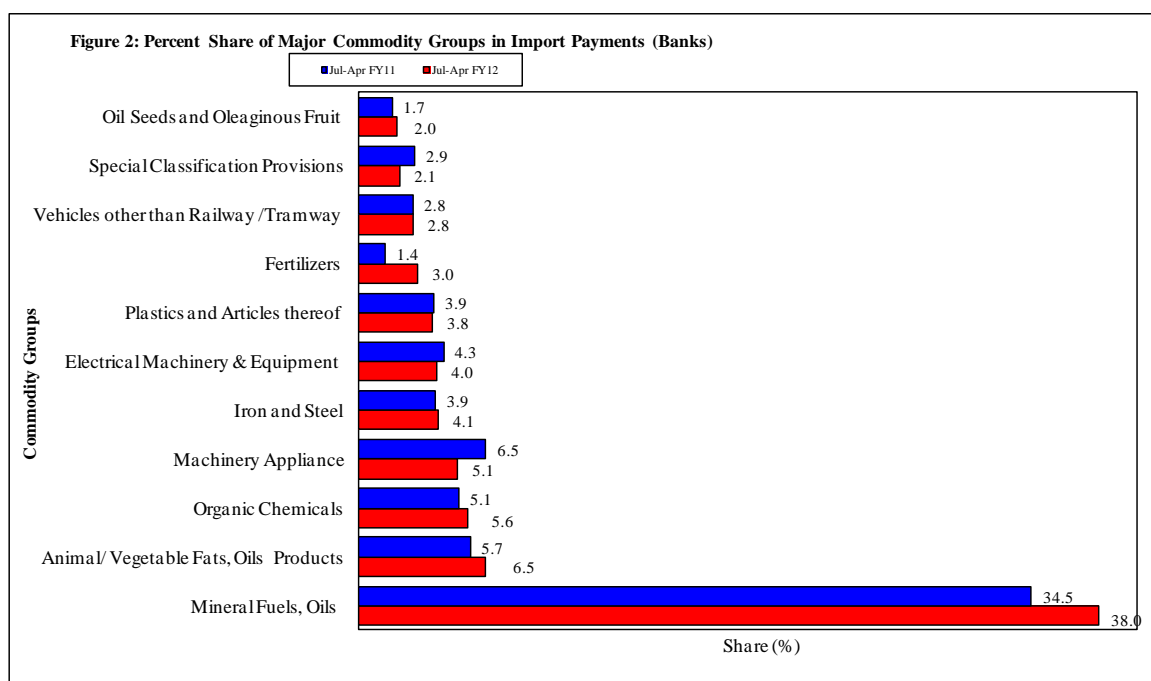


\*The data is import of goods based on Balance of Payments Manual 5 (BPM 5).

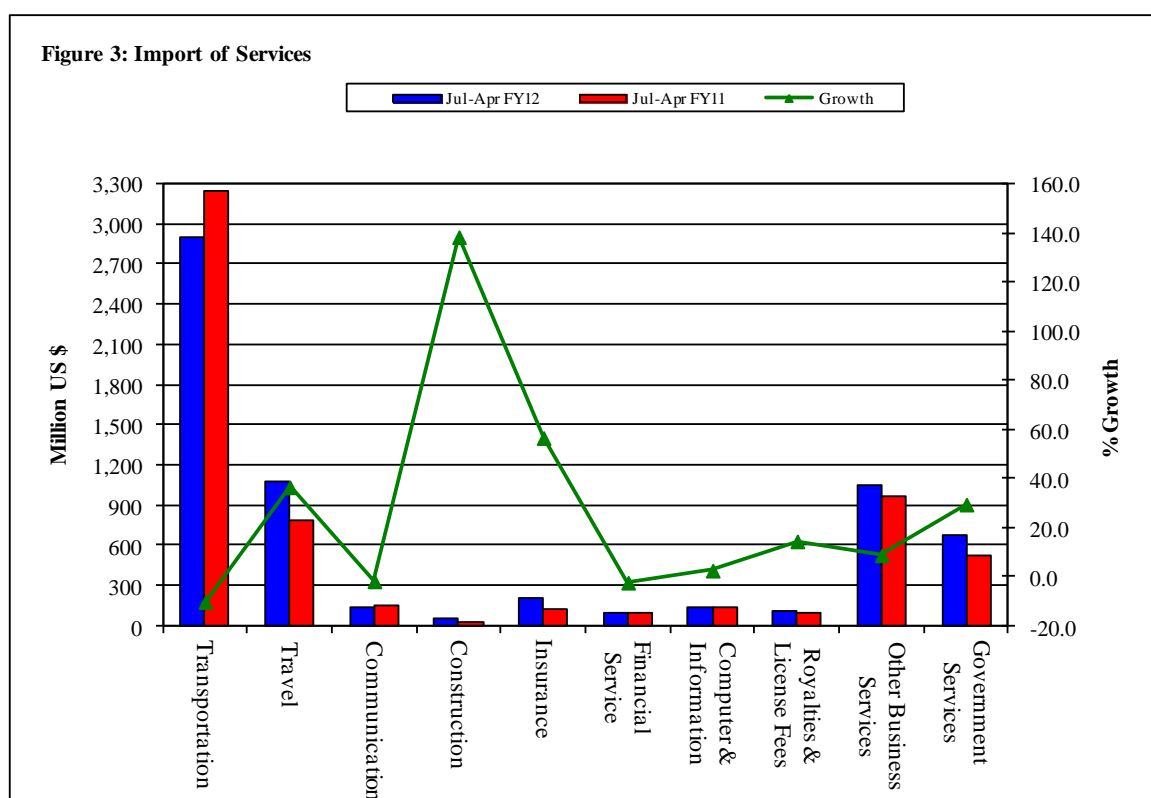
**Table 2: Import Payments by Major Groups of Goods & Services**

(Amount in Million)

Goods/ Services	April			July-April		% Change
	2012	2012	2011	2011-12	2010-11	
	Pak Rs.	US \$				
<b>Goods</b>						
I. Import Payments (Banks)	291,909	3,221	2,962	32,787	29,507	11.1
Mineral Fuels, Oils and Their Distillation Product	116,277	1,283	1,028	12,470	10,193	22.3
Animal or Vegetable Fats, Oils & Cleavage Products	13,538	149	184	2,130	1,688	26.2
Organic Chemicals	16,500	182	168	1,829	1,517	20.6
Nuclear Reactors, Boilers, Machinery and Appliance	16,760	185	160	1,668	1,930	-13.6
Iron and Steel	13,751	152	118	1,338	1,163	15.1
Electrical Machinery & Equipment and Parts thereof	11,133	123	144	1,311	1,283	2.1
Plastics and Articles thereof	11,261	124	124	1,241	1,138	9.1
Fertilizers	3,946	44	25	991	407	143.7
Vehicles other than Railway /Tramway Rolling Stock	8,682	96	78	917	819	12.0
Special Classification Provisions	4,486	49	47	689	850	-19.0
Oil Seeds and Oleaginous Fruit	4,409	49	40	651	506	28.5
Ships, Boats and Floating Structures	8,272	91	78	607	440	38.0
Man-Made Staple Fibers	3,882	43	69	496	496	0.0
Miscellaneous Chemical Products	3,860	43	46	459	431	6.4
Man-Made Filaments	3,927	43	51	458	434	5.6
Edible Vegetables	4,238	47	34	426	433	-1.6
Organic or Inorganic Compounds of Precious Metals	2,607	29	33	415	359	15.4
Cotton	2,580	28	75	411	929	-55.8
All Others	41,802	461	460	4,283	4,491	-4.6
II. Freight & Insurance	17,515	193	237	1,967	2,361	-16.7
III. Other Import Unaccounted by Banks	6,482	72	161	1,999	1,538	30.0
(A) Import General Merchandise (I-II+III)	280,876	3,099	2,886	32,819	28,685	14.4
(B) Other Import under BPM5*	4,323	48	24	337	274	23.0
(C) Import of Goods (A+B)	285,199	3,147	2,910	33,157	28,959	14.5
<b>Services</b>						
Transportation	22,735	251	331	2,905	3,238	-10.3
Travel	11,645	128	92	1,079	791	36.5
Communication Services	977	11	12	142	144	-1.8
Construction Services	114	1	2	53	22	138.3
Insurance Services	1,461	16	12	201	129	56.5
Financial Services	609	7	11	90	92	-2.4
Computer & Information Services	1,153	13	13	135	132	2.5
Royalties & License fees	699	8	9	108	94	14.5
Other Business Services	11,958	132	99	1,052	967	8.8
Personal, cultural & recreational Services	6	0	0	2	7	-65.2
Government Services	4,471	49	61	681	526	29.5
(D) Total Import of Services	55,827	616	642	6,448	6,142	5.0
Total Import of Goods & Services (C+D)	341,027	3,762	3,553	39,605	35,101	12.8



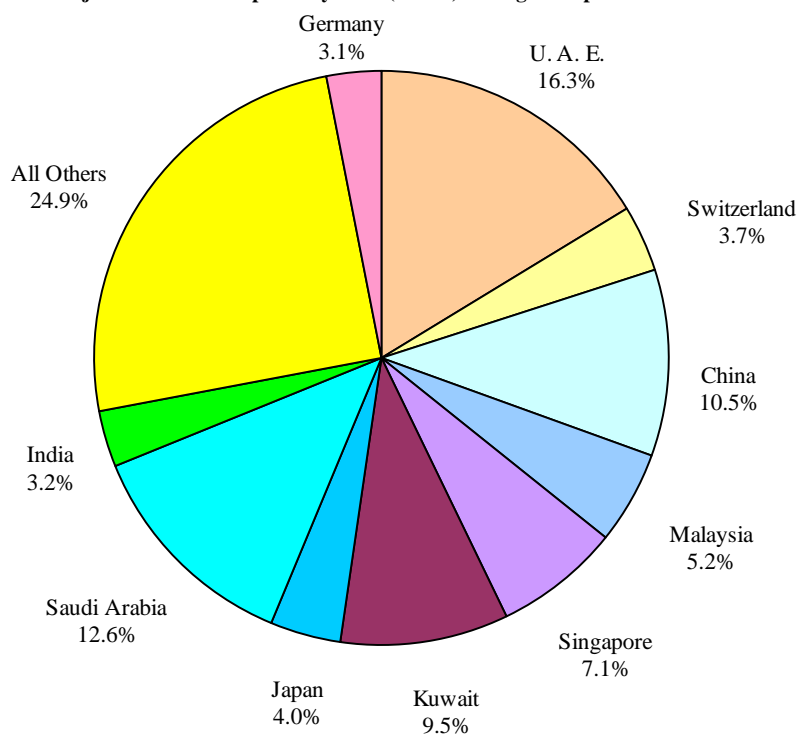
Note: - The share is based on the share of commodities in Import Payments through Banks



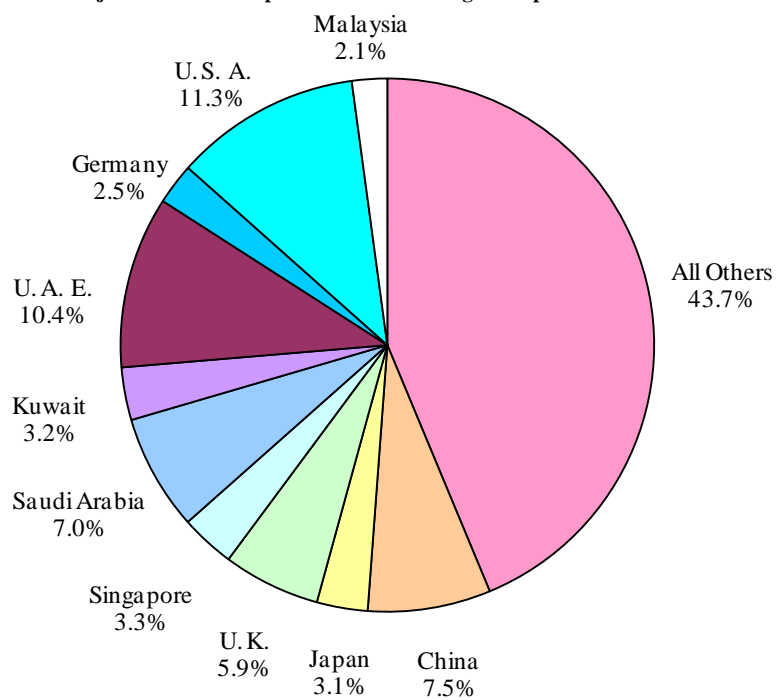
**Table 3: Import of Goods & Services by Major Countries**

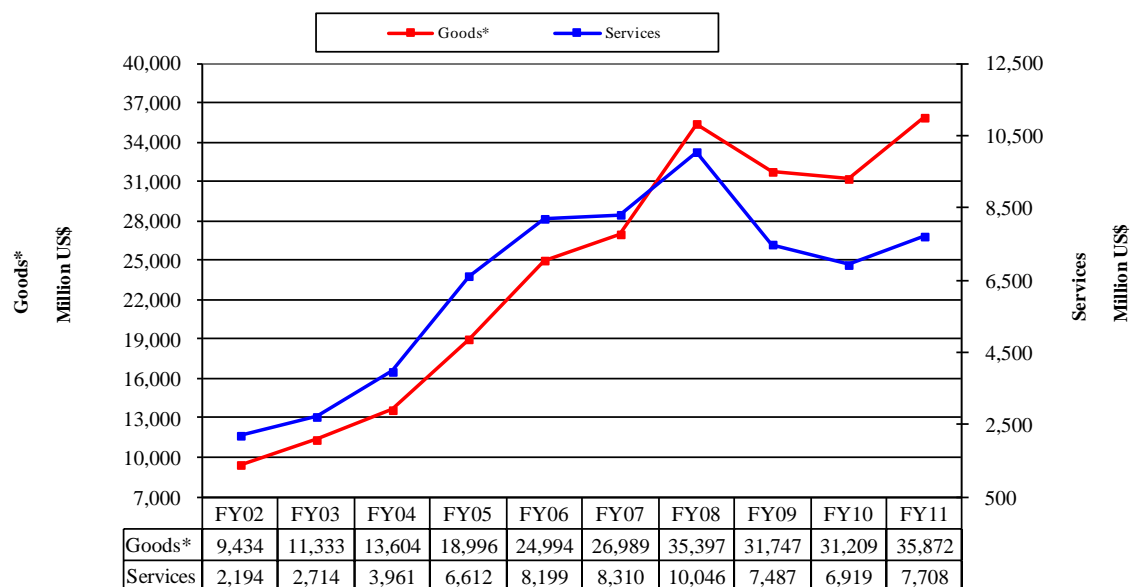
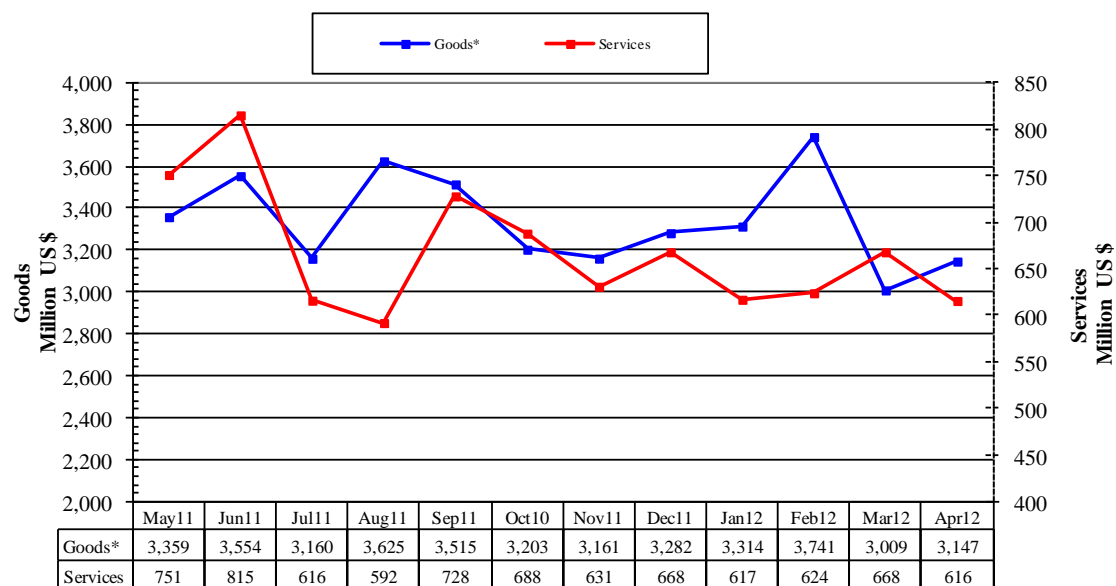
(Amount in Million)

Table 5: Import of Goods & Services by Major Countries				(Amount in Million)		
Country	April			July- April		% Change
	2012	2012	2011	2011-12	2010-11	
	Pak Rs.	US \$				
<b>Goods</b>						
I. Import Payments (Banks)	291,909	3,221	2,962	32,787	29,507	11.1
U. A. E.	52,769	582	447	5,341	4,673	14.3
Saudi Arabia	29,940	330	330	4,127	3,453	19.5
China	31,137	344	338	3,441	3,364	2.3
Kuwait	27,531	304	354	3,102	2,331	33.0
Singapore	26,991	298	210	2,320	2,109	10.0
Malaysia	16,876	186	162	1,715	1,459	17.6
Japan	9,913	109	111	1,304	1,216	7.2
Switzerland	2,425	27	34	1,226	787	55.9
India	7,534	83	83	1,039	1,261	-17.6
Germany	7,752	86	73	1,009	767	31.7
U. S. A.	7,699	85	99	657	924	-28.9
South Korea	4,641	51	64	539	460	17.2
U. K.	4,022	44	69	539	561	-4.0
Indonesia	4,704	52	38	518	334	54.9
Thailand	4,161	46	35	484	429	12.9
All Others	53,814	594	515	5,427	5,379	0.9
II. Freight & Insurance	17,515	193	237	1,967	2,361	-16.7
III. Other Import Unaccounted by Banks	6,482	72	161	1,999	1,538	30.0
(A) Import General Merchandise (I-II+III)	280,876	3,099	2,886	32,819	28,685	14.4
(B) Other Import under BPM5*	4,323	48	24	337	274	23.0
(C) Import of Goods (A+B)	285,199	3,147	2,910	33,157	28,959	14.5
<b>Services</b>						
U. S. A.	6,206	68	63	728	783	-7.1
U. A. E.	4,857	54	70	672	714	-5.9
China	5,448	60	74	481	478	0.5
Saudi Arabia	3,735	41	42	452	457	-1.0
U. K.	3,403	38	50	380	436	-12.7
Singapore	2,101	23	25	213	262	-18.7
Kuwait	1,905	21	31	206	206	0.3
Japan	766	8	16	199	173	15.1
Germany	1,030	11	15	161	137	17.6
Malaysia	1,245	14	14	138	145	-4.9
Switzerland	506	6	7	124	105	18.7
Thailand	1,021	11	9	111	90	22.9
Hongkong	589	7	10	95	84	12.5
France	524	6	5	68	81	-16.2
India	588	6	7	65	106	-38.3
All Other	21,903	241	206	2,357	1,888	24.9
(D) Total Import of Services	55,827	616	642	6,448	6,142	5.0
Total Import of Goods & Services (C+D)	341,027	3,762	3,553	39,605	35,101	12.8

**Figure 4: % Share of Major Countries in Import Payments (Banks) During Jul-Apr FY12**

Note: % Share is based on Import Payments through Banks

**Figure 5: % Share of Major Countries in Import of Services During Jul-Apr FY12**

**Figure 6: Annual Import of Goods & Services from FY02 to FY11****Figure 7: Monthly Imports of Goods & Services**

\* The data before FY05 is import general merchandise based on Balance of Payments Manual 4 (BPM 4) and onward on Balance of Payments Manual 5 (BPM 5).

Table 4: Annual, Quarterly &amp; Monthly Import of Goods\*\*

(Million US\$)

Period	FY03	FY04	FY05	FY06	FY07	FY08	FY09	FY10	FY11	FY12
Annual	11,333	13,604	18,996	24,994	26,989	35,397	31,747	31,209	35,872	33,157*
Growth (%)	20.1	20.0	39.6	31.6	8.0	31.2	-10.3	-1.7	14.9	
<b>Quarter-wise</b>										
Quarter-I	2,769 (24.4)	3,014 (22.2)	4,175 (22.0)	5,925 (23.7)	6,933 (25.7)	6,940 (19.6)	10,230 (32.2)	7,485 (24.0)	8,257 (23.0)	10,300
Quarter-II	2,853 (25.2)	3,204 (23.6)	5,047 (26.6)	6,074 (24.3)	6,768 (25.1)	8,548 (24.1)	8,077 (25.4)	7,691 (24.6)	8,627 (24.0)	9,646
Quarter-III	2,744 (24.2)	3,602 (26.5)	4,801 (25.3)	6,261 (25.1)	6,454 (23.9)	9,765 (27.6)	6,275 (19.8)	7,367 (23.6)	9,165 (25.5)	10,064
Quarter-IV	2,967 (26.2)	3,784 (27.8)	4,973 (26.2)	6,734 (26.9)	6,834 (25.3)	10,144 (28.7)	7,165 (22.6)	8,666 (27.8)	9,824 (27.4)	
<b>Month-wise</b>										
July	943 (8.3)	1,020 (7.5)	1,440 (7.6)	1,772 (7.1)	2,418 (9.0)	2,411 (6.8)	3,373 (10.6)	2,818 (9.0)	2,925 (8.2)	3,160
August	974 (8.6)	930 (6.8)	1,311 (6.9)	2,087 (8.4)	2,308 (8.6)	2,259 (6.4)	3,162 (10.0)	2,189 (7.0)	2,933 (8.2)	3,625
September	852 (7.5)	1,064 (7.8)	1,424 (7.5)	2,066 (8.3)	2,207 (8.2)	2,269 (6.4)	3,694 (11.6)	2,478 (7.9)	2,399 (6.7)	3,515
October	899 (7.9)	1,057 (7.8)	1,616 (8.5)	2,055 (8.2)	2,205 (8.2)	2,604 (7.4)	3,243 (10.2)	2,756 (8.8)	2,620 (7.3)	3,203
November	920 (8.1)	876 (6.4)	1,745 (9.2)	2,059 (8.2)	2,161 (8.0)	2,963 (8.4)	2,233 (7.0)	2,194 (7.0)	2,811 (7.8)	3,161
December	1,034 (9.1)	1,271 (9.3)	1,686 (8.9)	1,960 (7.8)	2,402 (8.9)	2,980 (8.4)	2,601 (8.2)	2,741 (8.8)	3,196 (8.9)	3,282
January	924 (8.2)	1,168 (8.6)	1,427 (7.5)	2,070 (8.3)	2,105 (7.8)	3,329 (9.4)	2,140 (6.7)	2,536 (8.1)	2,797 (7.8)	3,314
February	827 (7.3)	1,212 (8.9)	1,591 (8.4)	1,886 (7.5)	2,226 (8.2)	2,913 (8.2)	1,884 (5.9)	2,345 (7.5)	3,076 (8.6)	3,741
March	993 (8.8)	1,222 (9.0)	1,783 (9.4)	2,305 (9.2)	2,123 (7.9)	3,523 (10.0)	2,251 (7.1)	2,486 (8.0)	3,292 (9.2)	3,009
April	979 (8.6)	1,230 (9.0)	1,508 (7.9)	1,682 (6.7)	2,185 (8.1)	3,391 (9.6)	2,370 (7.5)	2,916 (9.3)	2,910 (8.1)	3,147
May	959 (8.5)	1,166 (8.6)	1,741 (9.2)	2,361 (9.4)	2,214 (8.2)	3,246 (9.2)	2,002 (6.3)	2,638 (8.5)	3,359 (9.4)	
June	1,029 (9.1)	1,388 (10.2)	1,724 (9.1)	2,691 (10.8)	2,435 (9.0)	3,507 (9.9)	2,793 (8.8)	3,112 (10.0)	3,554 (9.9)	

Notes: 1. Figures in parentheses are percentage to annual import payments of the respective years

2. Due to rounding off separate items, totals may show minor differences

\* The total include figures for July to current month

\*\* The data before FY05 is import general merchandise based on Balance of Payments Manual 4 (BPM 4) and onward on Balance of Payments Manual 5 (BPM 5).

Table 5: Annual, Quarterly &amp; Monthly Import of Services

(Million US\$)

Period	FY03	FY04	FY05	FY06	FY07	FY08	FY09	FY10	FY11	FY12
Annual	2,714	3,961	6,612	8,199	8,310	10,046	7,487	6,919	7,708	6,448*
Growth (%)	23.7	45.9	66.9	24.0	1.4	20.9	-25.5	-7.6	11.4	
<b><u>Quarter-wise</u></b>										
Quarter-I	579 (21.3)	799 (20.2)	1,449 (21.9)	1,953 (23.8)	2,039 (24.5)	2,194 (21.8)	2,392 (31.9)	1,585 (22.9)	1,722 (22.3)	1,936
Quarter-II	586 (21.6)	945 (23.9)	1,669 (25.2)	2,061 (25.1)	2,193 (26.4)	2,548 (25.4)	2,021 (27.0)	1,892 (27.3)	1,941 (25.2)	1,987
Quarter-III	649 (23.9)	1,097 (27.7)	1,764 (26.7)	2,061 (25.1)	2,014 (24.2)	2,569 (25.6)	1,389 (18.6)	1,582 (22.9)	1,837 (23.8)	1,909
Quarter-IV	900 (33.2)	1,120 (28.3)	1,730 (26.2)	2,124 (25.9)	2,064 (24.8)	2,735 (27.2)	1,685 (22.5)	1,860 (26.9)	2,208 (28.6)	
<b><u>Month-wise</u></b>										
July	181 (6.7)	305 (7.7)	432 (6.5)	573 (7.0)	735 (8.8)	755 (7.5)	743 (9.9)	568 (8.2)	565 (7.3)	616
August	184 (6.8)	207 (5.2)	473 (7.2)	735 (9.0)	619 (7.4)	757 (7.5)	816 (10.9)	489 (7.1)	561 (7.3)	592
September	214 (7.9)	287 (7.2)	544 (8.2)	645 (7.9)	685 (8.2)	682 (6.8)	833 (11.1)	528 (7.6)	596 (7.7)	728
October	189 (7.0)	327 (8.3)	525 (7.9)	626 (7.6)	645 (7.8)	782 (7.8)	839 (11.2)	691 (10.0)	702 (9.1)	688
November	195 (7.2)	238 (6.0)	489 (7.4)	674 (8.2)	782 (9.4)	963 (9.6)	577 (7.7)	562 (8.1)	597 (7.7)	631
December	202 (7.4)	380 (9.6)	655 (9.9)	761 (9.3)	766 (9.2)	803 (8.0)	605 (8.1)	639 (9.2)	642 (8.3)	668
January	248 (9.1)	378 (9.5)	539 (8.2)	672 (8.2)	683 (8.2)	894 (8.9)	448 (6.0)	500 (7.2)	583 (7.6)	617
February	185 (6.8)	339 (8.6)	561 (8.5)	622 (7.6)	633 (7.6)	751 (7.5)	458 (6.1)	495 (7.2)	570 (7.4)	624
March	216 (8.0)	380 (9.6)	664 (10.0)	767 (9.4)	698 (8.4)	924 (9.2)	483 (6.5)	587 (8.5)	684 (8.9)	668
April	331 (12.2)	379 (9.6)	610 (9.2)	617 (7.5)	680 (8.2)	999 (9.9)	542 (7.2)	618 (8.9)	642 (8.3)	616
May	276 (10.2)	355 (9.0)	582 (8.8)	744 (9.1)	657 (7.9)	797 (7.9)	523 (7.0)	582 (8.4)	751 (9.7)	
June	293 (10.8)	386 (9.7)	538 (8.1)	763 (9.3)	727 (8.7)	939 (9.3)	620 (8.3)	660 (9.5)	815 (10.6)	

Notes: 1. Figures in parentheses are percentage to annual import payments of the respective years

2. Due to rounding off separate items, totals may show minor differences

\* The total include figures for July to current month