

SUMMARY

Table 1(a) : Monthly Import of Goods & Services

(Million US\$)

Items	September	
	2010	2009
I. Import Payments (Banks)	2,519	2,523
II. Freight & Insurance	201	202
III. Other Import unaccounted by Banks	24	104
Unclassified Imports	10	16
Imports NRI, Sale of Duty Free Shops	4	4
Imports under Foreign Economic Assistance	2	79
Land borne Imports with Afghanistan	12	5
PIA & PNSC	3	3
Capital Equipment	0	0
Cost of Imports (Ex. Cos.)	0	0
Refund & Rebate	-7	-4
Import from EPZ	0	0
(A) Import General Merchandise (I-II+III)	2,341	2,425
(B) Other Import under BPM5*	31	22
(C) Import of Goods (A+B)	2,372	2,447
(D) Import of Services	572	513
(E) Import of Goods & Services (C+D)	2,944	2,961

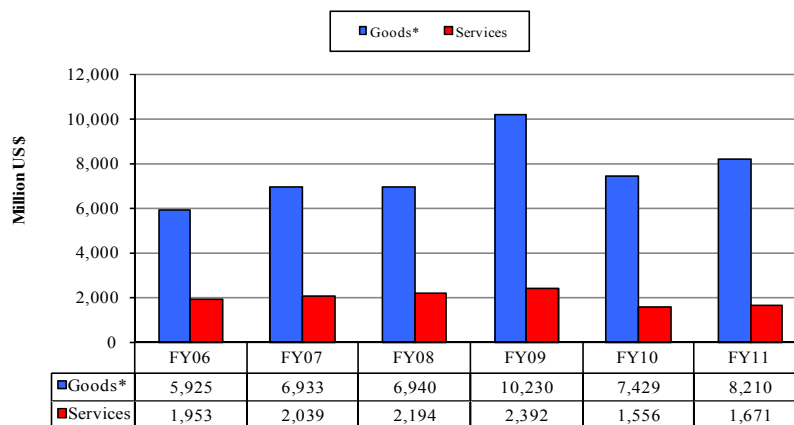
* See "Introduction" for details:

Table 1(b) : Key Indicators of Import of Goods and Services

(Million US\$)

September 2010	2,944
August 2010	3,465
% Change during September 2010 over August 2010	-15.0
September 2009	2,961
% Change during September 2010 over September 2009	-0.6
July-September 2010-11	9,881
July-September 2009-10	8,986
% Change during July-September 2010-11 over Jul-September 2009-10	10.0
Monthly average during July-September 2010-11	3,294
Monthly average during July-September 2009-10	2,995
FY10	37,880
FY09	39,234
% Change during FY10 over FY09	-3.5
Monthly average during FY10	3,157
Monthly average during FY09	3,270

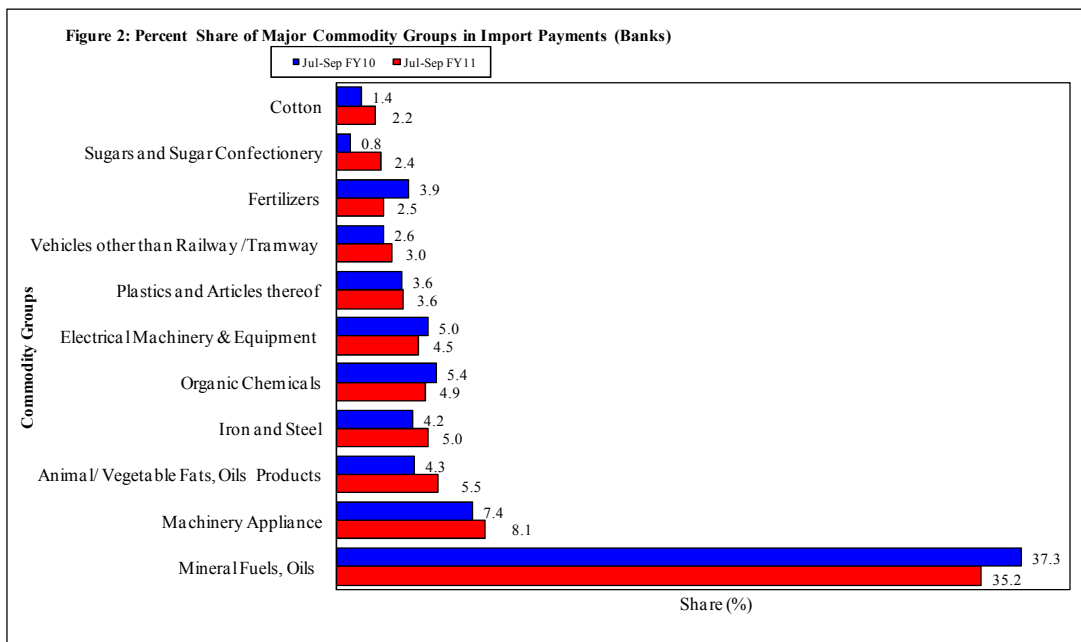
Figure 1. Import During Jul-Sep



*The data is import of goods based on Balance of Payments Manual 5 (BPM 5).

Table 2: Import Payments by Major Groups of Goods & Services (Amount in Million)

Goods/ Services	September			July- September		% Change
	2010	2010	2009	2010-11	2009-10	
	Pak Rs.	US \$				
Goods						
I. Total Import Payments (Banks)	215,998	2,519	2,523	8,471	7,268	16.6
Mineral Fuels, Oils and Their Distillation Product	69,214	807	1,045	2,979	2,713	9.8
Nuclear Reactors, Boilers, Machinery and Appliance	16,305	190	152	687	539	27.6
Animal or Vegetable Fats, Oils & Cleavage Products	11,999	140	97	470	309	51.9
Iron and Steel	11,730	137	93	424	303	40.1
Organic Chemicals	12,556	146	117	411	395	4.2
Electrical Machinery & Equipment and Parts thereof	10,636	124	138	382	362	5.5
Plastics and Articles thereof	7,881	92	91	306	258	18.5
Vehicles other than Railway /Tramway Rolling Stock	7,414	86	67	255	186	37.2
Fertilizers	3,358	39	94	216	286	-24.6
Sugars and Sugar Confectionery	4,182	49	26	204	56	266.2
Cotton	3,322	39	18	183	99	84.6
Miscellaneous Chemical Products	3,543	41	44	128	129	-0.7
Man-Made Staple Fibers	2,902	34	31	123	85	45.2
Edible Vegetables	4,325	50	16	114	65	74.9
Ships, Boats and Floating Structures	4,442	52	16	113	46	147.1
Special Classification Provisions	3,273	38	54	108	144	-24.7
Man-Made Filaments	3,123	36	23	108	74	45.0
Organic or Inorganic Compounds of Precious Metals	2,834	33	30	107	84	27.6
All Other	32,957	384	371	1,153	1,136	1.5
II. Freight & Insurance	17,280	201	202	678	581	16.6
III. Other Import Unaccounted by Banks	2,067	24	104	332	679	-51.1
(A) Import General Merchandise (I-II+III)	200,785	2,341	2,425	8,125	7,365	10.3
(B) Other Import under BPM5*	2,667	31	22	85	64	32.2
(C) Import of Goods (A+B)	203,452	2,372	2,447	8,210	7,429	10.5
Services						
Transportation	23,730	277	288	926	851	8.8
Travel	5,273	61	45	178	147	21.4
Communication Services	1,612	19	12	40	22	81.2
Construction Services	148	2	1	4	9	-53.2
Insurance Services	1,117	13	17	43	47	-7.7
Financial Services	1,192	14	9	26	25	2.7
Computer & Information Services	995	12	8	32	25	24.4
Royalties & License fees	1,065	12	6	23	17	39.5
Other Business Services	7,036	82	78	242	279	-13.2
Personal, cultural & recreational Services	147	2	1	4	5	-20.4
Government Services	6,696	78	48	153	130	17.8
(D) Total Import of Services	49,011	572	513	1,671	1,556	7.4
Total Import of Goods & Services (C+D)	252,463	2,944	2,961	9,881	8,986	10.0



Note: - The share is based on the share of commodities in Import Payments through Banks

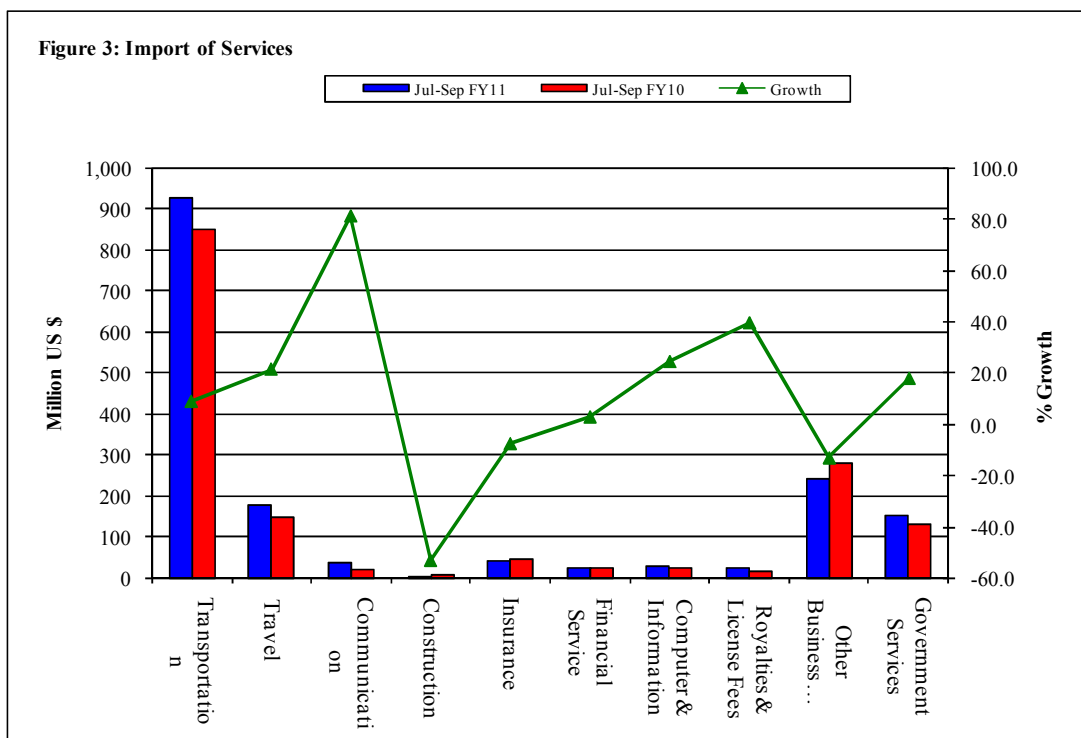
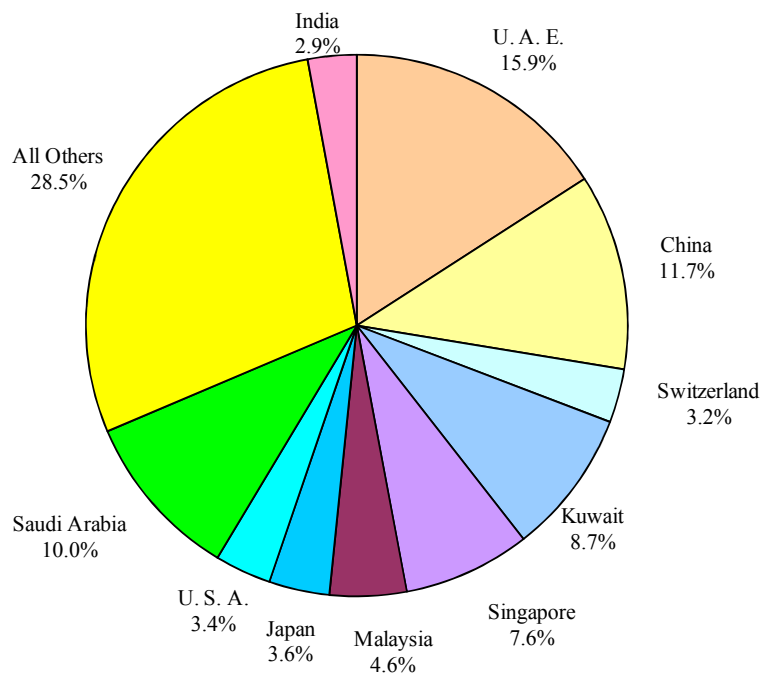


Table 3: Import of Goods & Services by Major Countries

(Amount in Million)

Country	September			July- September		%
	2010	2010	2009	2010-11	2009-10	Change
	Pak Rs.	US \$				
Goods						
I. Total Import Payments (Banks)	215,998	2,519	2,523	8,471	7,268	16.6
U. A. E.	36,675	428	591	1,346	1,292	4.2
China	24,143	282	204	992	594	66.9
Saudi Arabia	19,378	226	286	849	819	3.7
Kuwait	17,169	200	151	734	469	56.5
Singapore	16,976	198	146	643	503	27.8
Malaysia	9,500	111	81	388	266	45.7
Japan	8,813	103	97	306	264	16.1
U. S. A.	7,172	84	58	284	211	34.7
Switzerland	6,300	73	77	270	222	21.9
India	5,841	68	55	247	205	20.6
Germany	5,270	61	80	196	275	-28.7
U. K.	4,903	57	43	166	168	-1.4
Iran	5,213	61	123	164	365	-55.0
South Korea	4,041	47	35	128	108	18.6
Thailand	3,518	41	31	124	84	48.5
All Others	41,084	479	464	1,632	1,422	14.8
II. Freight & Insurance	17,280	201	202	678	581	16.6
III. Other Import Unaccounted by Banks	2,067	24	104	332	679	-51.1
(A) Import General Merchandise (I-II+III)	200,785	2,341	2,425	8,125	7,365	10.3
(B) Other Import under BPM5*	2,667	31	22	85	64	32.2
(C) Import of Goods (A+B)	203,452	2,372	2,447	8,210	7,429	10.5
Services						
U. S. A.	5,689	66	77	218	222	-2.0
U. A. E.	4,674	55	76	160	182	-12.0
Saudi Arabia	3,133	37	41	125	121	2.8
U. K.	3,559	42	39	123	119	3.0
China-Peoples Republic Of	3,140	37	25	119	85	39.2
Singapore	1,850	22	21	73	65	11.8
Kuwait	1,513	18	13	65	40	60.2
Malaysia	1,624	19	9	44	27	64.0
Japan	1,273	15	11	37	34	6.8
Switzerland	935	11	8	34	26	32.8
Turkey	2,436	28	1	33	5	504.9
Germany	941	11	14	32	44	-28.7
Thailand	972	11	9	31	25	24.3
Hon gkong	709	8	4	23	12	86.6
France	566	7	9	21	28	-22.5
All Other	15,996	187	157	535	519	3.0
(D) Total Import of Services	49,011	572	513	1,671	1,556	7.4
Total Import of Goods & Services (C+D)	252,463	2,944	2,961	9,881	8,986	10.0

Figure 4: % Share of Major Countries in Import Payments (Banks) During Jul-Sep FY11

Note: % Share is based on Import Payments through Banks

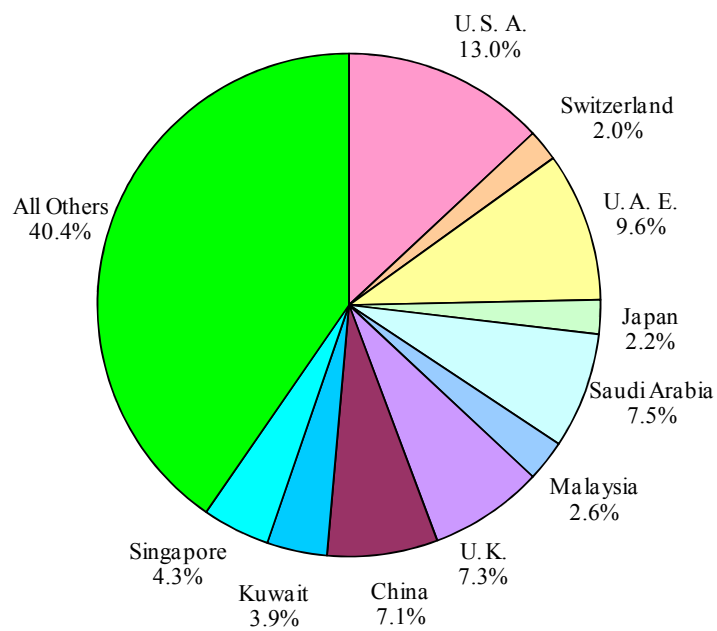
Figure 5: % Share of Major Countries in Import of Services During Jul-Sep FY11

Figure 6: Annual Import of Goods & Services from FY01 to FY10

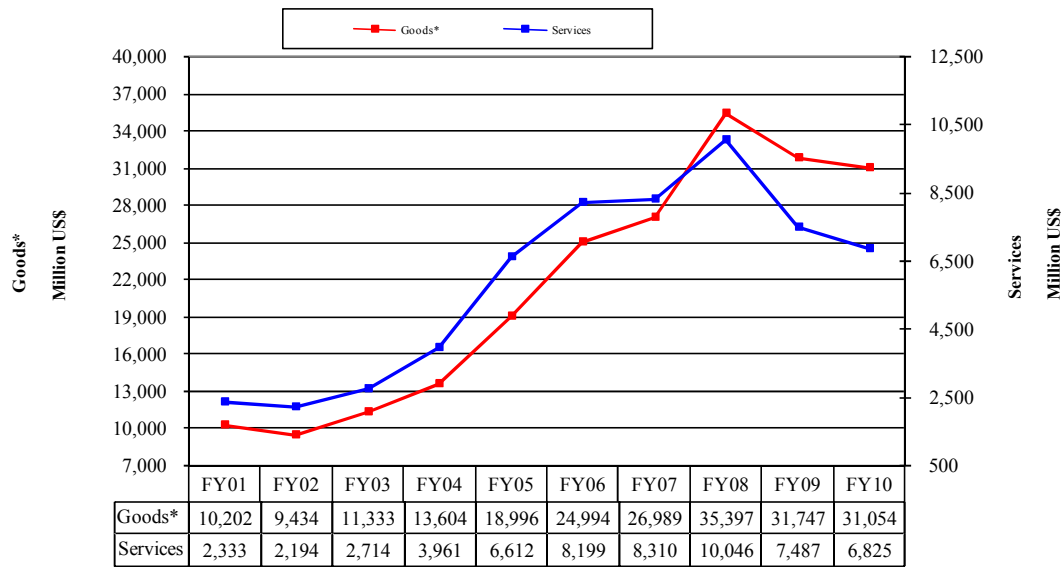
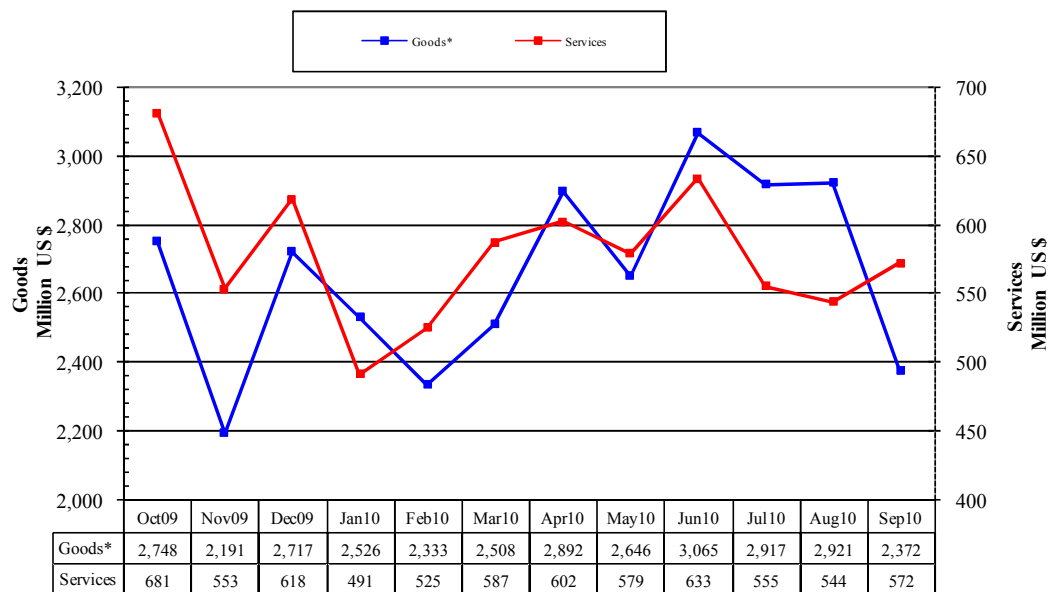


Figure 7: Monthly Imports of Goods & Services



* The data before FY05 is import general merchandise based on Balance of Payments Manual 4 (BPM 4) and onward on Balance of Payments Manual 5 (BPM 5).

Table 4: Annual, Quarterly & Monthly Import of Goods** (Million US\$)

Period	FY02	FY03	FY04	FY05	FY06	FY07	FY08	FY09	FY10	FY11
Annual	9,434	11,333	13,604	18,996	24,994	26,989	35,397	31,747	31,054	8,210*
Growth (%)	-7.5	20.1	20.0	39.6	31.6	8.0	31.2	-10.3	-2.2	
<u>Quarter-wise</u>										
Quarter-I	2,412 (25.6)	2,769 (24.4)	3,014 (22.2)	4,175 (22.0)	5,925 (23.7)	6,933 (25.7)	6,940 (19.6)	10,230 (32.2)	7,429 (23.9)	8,210
Quarter-II	2,216 (23.5)	2,853 (25.2)	3,204 (23.6)	5,047 (26.6)	6,074 (24.3)	6,768 (25.1)	8,548 (24.1)	8,077 (25.4)	7,655 (24.7)	
Quarter-III	2,233 (23.7)	2,744 (24.2)	3,602 (26.5)	4,801 (25.3)	6,261 (25.1)	6,454 (23.9)	9,765 (27.6)	6,275 (19.8)	7,367 (23.7)	
Quarter-IV	2,573 (27.3)	2,967 (26.2)	3,784 (27.8)	4,973 (26.2)	6,734 (26.9)	6,834 (25.3)	10,144 (28.7)	7,165 (22.6)	8,603 (27.7)	
<u>Month-wise</u>										
July	778 (8.2)	943 (8.3)	1,020 (7.5)	1,440 (7.6)	1,772 (7.1)	2,418 (9.0)	2,411 (6.8)	3,373 (10.6)	2,811 (9.1)	2,917
August	850 (9.0)	974 (8.6)	930 (6.8)	1,311 (6.9)	2,087 (8.4)	2,308 (8.6)	2,259 (6.4)	3,162 (10.0)	2,171 (7.0)	2,921
September	784 (8.3)	852 (7.5)	1,064 (7.8)	1,424 (7.5)	2,066 (8.3)	2,207 (8.2)	2,269 (6.4)	3,694 (11.6)	2,447 (7.9)	2,372
October	757 (8.0)	899 (7.9)	1,057 (7.8)	1,616 (8.5)	2,055 (8.2)	2,205 (8.2)	2,604 (7.4)	3,243 (10.2)	2,748 (8.8)	
November	735 (7.8)	920 (8.1)	876 (6.4)	1,745 (9.2)	2,059 (8.2)	2,161 (8.0)	2,963 (8.4)	2,233 (7.0)	2,191 (7.1)	
December	724 (7.7)	1,034 (9.1)	1,271 (9.3)	1,686 (8.9)	1,960 (7.8)	2,402 (8.9)	2,980 (8.4)	2,601 (8.2)	2,717 (8.7)	
January	796 (8.4)	924 (8.2)	1,168 (8.6)	1,427 (7.5)	2,070 (8.3)	2,105 (7.8)	3,329 (9.4)	2,140 (6.7)	2,526 (8.1)	
February	721 (7.6)	827 (7.3)	1,212 (8.9)	1,591 (8.4)	1,886 (7.5)	2,226 (8.2)	2,913 (8.2)	1,884 (5.9)	2,333 (7.5)	
March	716 (7.6)	993 (8.8)	1,222 (9.0)	1,783 (9.4)	2,305 (9.2)	2,123 (7.9)	3,523 (10.0)	2,251 (7.1)	2,508 (8.1)	
April	786 (8.3)	979 (8.6)	1,230 (9.0)	1,508 (7.9)	1,682 (6.7)	2,185 (8.1)	3,391 (9.6)	2,370 (7.5)	2,892 (9.3)	
May	834 (8.8)	959 (8.5)	1,166 (8.6)	1,741 (9.2)	2,361 (9.4)	2,214 (8.2)	3,246 (9.2)	2,002 (6.3)	2,646 (8.5)	
June	953 (10.1)	1,029 (9.1)	1,388 (10.2)	1,724 (9.1)	2,691 (10.8)	2,435 (9.0)	3,507 (9.9)	2,793 (8.8)	3,065 (9.9)	

Notes: 1. Figures in parentheses are percentage to annual import payments of the respective years

2. Due to rounding off separate items, totals may show minor differences

* The total include figures for July to current month

** The data before FY05 is import general merchandise based on Balance of Payments Manual 4 (BPM 4) and onward on Balance of Payments Manual 5 (BPM 5).

Table 5: Annual, Quarterly & Monthly Import of Services

(Million US\$)

Period	FY02	FY03	FY04	FY05	FY06	FY07	FY08	FY09	FY10	FY11
Annual	2,194	2,714	3,961	6,612	8,199	8,310	10,046	7,487	6,825	1,671*
Growth (%)	-6.0	23.7	45.9	66.9	24.0	1.4	20.9	-25.5	-8.8	
<u>Quarter-wise</u>										
Quarter-I	586 (26.7)	579 (21.3)	799 (20.2)	1,449 (21.9)	1,953 (23.8)	2,039 (24.5)	2,194 (21.8)	2,392 (31.9)	1,556 (22.8)	1,671
Quarter-II	531 (24.2)	586 (21.6)	945 (23.9)	1,669 (25.2)	2,061 (25.1)	2,193 (26.4)	2,548 (25.4)	2,021 (27.0)	1,852 (27.1)	
Quarter-III	552 (25.2)	649 (23.9)	1,097 (27.7)	1,764 (26.7)	2,061 (25.1)	2,014 (24.2)	2,569 (25.6)	1,389 (18.6)	1,603 (23.5)	
Quarter-IV	525 (23.9)	900 (33.2)	1,120 (28.3)	1,730 (26.2)	2,124 (25.9)	2,064 (24.8)	2,735 (27.2)	1,685 (22.5)	1,814 (26.6)	
<u>Month-wise</u>										
July	178 (8.1)	181 (6.7)	305 (7.7)	432 (6.5)	573 (7.0)	735 (8.8)	755 (7.5)	743 (9.9)	566 (8.3)	555
August	189 (8.6)	184 (6.8)	207 (5.2)	473 (7.2)	735 (9.0)	619 (7.4)	757 (7.5)	816 (10.9)	477 (7.0)	544
September	219 (10.0)	214 (7.9)	287 (7.2)	544 (8.2)	645 (7.9)	685 (8.2)	682 (6.8)	833 (11.1)	513 (7.5)	572
October	190 (8.7)	189 (7.0)	327 (8.3)	525 (7.9)	626 (7.6)	645 (7.8)	782 (7.8)	839 (11.2)	681 (10.0)	
November	180 (8.2)	195 (7.2)	238 (6.0)	489 (7.4)	674 (8.2)	782 (9.4)	963 (9.6)	577 (7.7)	553 (8.1)	
December	161 (7.3)	202 (7.4)	380 (9.6)	655 (9.9)	761 (9.3)	766 (9.2)	803 (8.0)	605 (8.1)	618 (9.1)	
January	159 (7.2)	248 (9.1)	378 (9.5)	539 (8.2)	672 (8.2)	683 (8.2)	894 (8.9)	448 (6.0)	491 (7.2)	
February	166 (7.6)	185 (6.8)	339 (8.6)	561 (8.5)	622 (7.6)	633 (7.6)	751 (7.5)	458 (6.1)	525 (7.7)	
March	227 (10.3)	216 (8.0)	380 (9.6)	664 (10.0)	767 (9.4)	698 (8.4)	924 (9.2)	483 (6.5)	587 (8.6)	
April	166 (7.6)	331 (12.2)	379 (9.6)	610 (9.2)	617 (7.5)	680 (8.2)	999 (9.9)	542 (7.2)	602 (8.8)	
May	147 (6.7)	276 (10.2)	355 (9.0)	582 (8.8)	744 (9.1)	657 (7.9)	797 (7.9)	523 (7.0)	579 (8.5)	
June	212 (9.7)	293 (10.8)	386 (9.7)	538 (8.1)	763 (9.3)	727 (8.7)	939 (9.3)	620 (8.3)	633 (9.3)	

Notes: 1. Figures in parentheses are percentage to annual import payments of the respective years

2. Due to rounding off separate items, totals may show minor differences

* The total include figures for July to current month