

SUMMARY

Table 1(a) : Monthly Import of Goods & Services

(Million US\$)

Items	October	
	2010	2009
I. Import Payments (Banks)	2,628	2,729
II. Freight & Insurance	210	218
III. Other Import unaccounted by Banks	149	219
Unclassified Imports	133	194
Imports NRI, Sale of Duty Free Shops	4	5
Imports under Foreign Economic Assistance	9	17
Land borne Imports with Afghanistan	10	7
PIA & PNSC	3	3
Capital Equipment	0	0
Cost of Imports (Ex. Cos.)	0	0
Refund & Rebate	-10	-8
Import from EPZ	0	0
(A) Import General Merchandise (I-II+III)	2,567	2,729
(B) Other Import under BPM5*	25	18
(C) Import of Goods (A+B)	2,591	2,748
(D) Import of Services	670	681
(E) Import of Goods & Services (C+D)	3,262	3,429

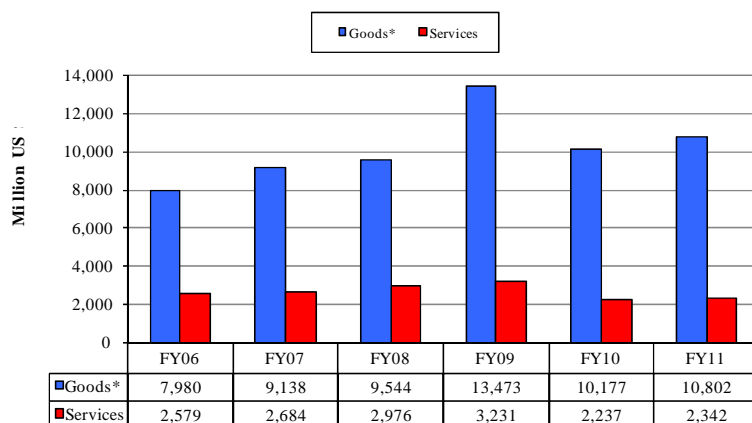
* See "Introduction" for details:

Table 1(b) : Key Indicators of Import of Goods and Services

(Million US\$)

October 2010	3,262
September 2010	2,946
% Change during October 2010 over September 2010	10.7
October 2009	3,429
% Change during October 2010 over October 2009	-4.9
July-October 2010-11	13,143
July-October 2009-10	12,415
% Change during July-October 2010-11 over Jul-October 2009-10	5.9
Monthly average during July-October 2010-11	3,286
Monthly average during July-October 2009-10	3,104
FY10	37,880
FY09	39,234
% Change during FY10 over FY09	-3.5
Monthly average during FY10	3,157
Monthly average during FY09	3,270

Figure 1. Import During Jul-Oct

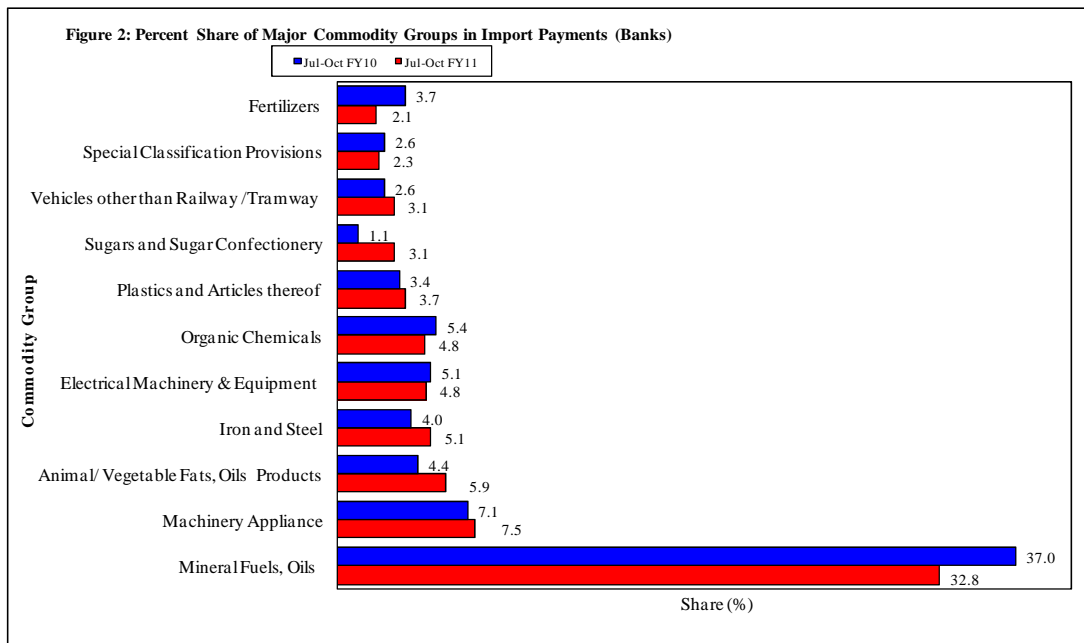


*The data is import of goods based on Balance of Payments Manual 5 (BPM 5).

Table 2: Import Payments by Major Groups of Goods & Services

(Amount in Million)

Goods/ Services	October			July-October		% Change
	2010	2010	2009	2010-11	2009-10	
	Pak Rs.	US \$				
Goods						
I. Total Import Payments (Banks)	225,835	2,628	2,729	11,099	9,997	11.0
Mineral Fuels, Oils and Their Distillation Product	56,957	663	982	3,642	3,694	-1.4
Nuclear Reactors, Boilers, Machinery and Appliance	12,602	147	171	834	709	17.6
Animal or Vegetable Fats, Oils & Cleavage Products	16,355	190	130	660	439	50.2
Iron and Steel	12,207	142	101	566	404	40.3
Electrical Machinery & Equipment and Parts thereof	13,318	155	147	537	509	5.5
Organic Chemicals	10,157	118	146	529	540	-2.0
Plastics and Articles thereof	9,095	106	80	412	338	21.9
Sugars and Sugar Confectionery	12,455	145	59	349	115	204.1
Vehicles other than Railway /Tramway Rolling Stock	7,643	89	70	344	255	34.5
Special Classification Provisions	12,466	145	114	253	258	-1.6
Fertilizers	1,562	18	85	234	371	-36.9
Cotton	3,558	41	22	224	121	84.7
Edible Vegetables	5,198	60	24	175	90	94.7
Miscellaneous Chemical Products	3,075	36	41	164	171	-3.7
Man-Made Staple Fibers	3,519	41	31	164	115	42.1
Oil Seeds and Oleaginous Fruit	5,354	62	51	161	139	16.0
Ships, Boats and Floating Structures	3,998	47	9	160	54	193.3
Organic or Inorganic Compounds of Precious Metals	3,524	41	25	148	109	35.7
All Other	32,791	382	443	1,543	1,565	-1.4
II. Freight & Insurance	18,067	210	218	888	800	11.0
III. Other Import Unaccounted by Banks	12,831	149	219	482	898	-46.3
(A) Import General Merchandise (I-II+III)	220,599	2,567	2,729	10,693	10,095	5.9
(B) Other Import under BPM5*	2,106	25	18	109	82	32.4
(C) Import of Goods (A+B)	222,705	2,591	2,748	10,802	10,177	6.1
Services						
Transportation	26,102	304	286	1,230	1,137	8.2
Travel	15,052	175	160	353	307	15.1
Communication Services	1,366	16	23	56	45	24.4
Construction Services	118	1	1	5	10	-47.3
Insurance Services	835	10	9	53	56	-5.2
Financial Services	714	8	9	34	34	0.6
Computer & Information Services	843	10	12	42	37	12.0
Royalties & License fees	727	8	9	31	26	21.9
Other Business Services	8,486	99	128	341	407	-16.4
Personal, cultural & recreational Services	5	0	4	4	9	-55.6
Government Services	3,325	39	40	193	170	13.4
(D) Total Import of Services	57,573	670	681	2,342	2,237	4.7
Total Import of Goods & Services (C+D)	280,278	3,262	3,429	13,143	12,415	5.9



Note: - The share is based on the share of commodities in Import Payments through Banks

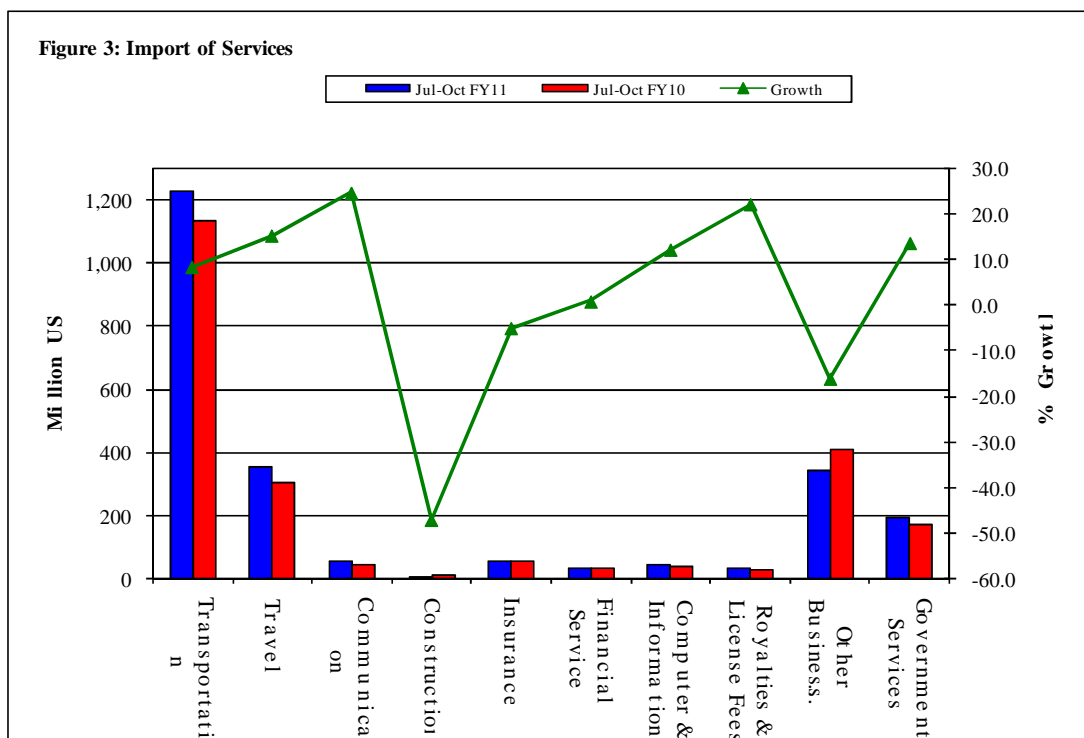
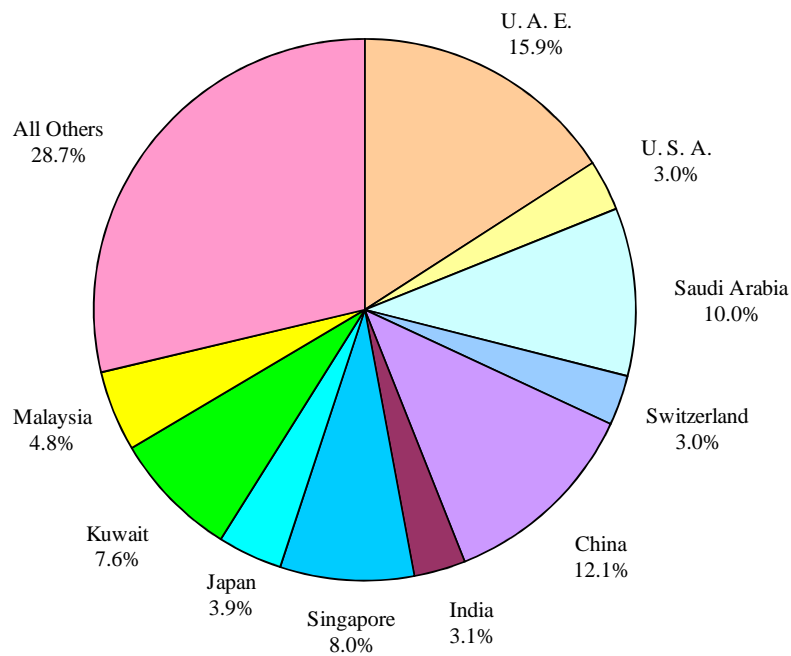


Table 3: Import of Goods & Services by Major Countries

(Amount in Million)

Country	October			July-October		% Change
	2010	2010	2009	2010-11	2009-10	
	Pak Rs.	US \$				
Goods						
I. Total Import Payments (Banks)	225,835	2,628	2,729	11,099	9,997	11.0
U. A. E.	35,810	417	468	1,763	1,761	0.1
China	29,801	347	355	1,338	949	41.1
Saudi Arabia	22,594	263	290	1,112	1,109	0.3
Singapore	20,918	243	138	887	642	38.2
Kuwait	8,957	104	155	838	624	34.3
Malaysia	12,557	146	124	534	390	37.0
Japan	10,553	123	95	429	359	19.6
India	8,148	95	73	342	278	23.0
U. S. A.	4,519	53	86	337	297	13.5
Switzerland	5,308	62	127	332	349	-4.8
Germany	7,862	91	89	288	364	-21.0
U. K.	4,817	56	67	222	236	-5.9
Hong Kong	5,971	69	31	187	91	106.8
Thailand	3,974	46	32	170	115	48.0
South Korea	3,502	41	33	169	141	19.6
All Others	40,544	472	566	2,150	2,294	-6.2
II. Freight & Insurance	18,067	210	218	888	800	11.0
III. Other Import Unaccounted by Banks	12,831	149	219	482	898	-46.3
(A) Import General Merchandise (I-II+III)	220,599	2,567	2,729	10,693	10,095	5.9
(B) Other Import under BPM5*	2,106	25	18	109	82	32.4
(C) Import of Goods (A+B)	222,705	2,591	2,748	10,802	10,177	6.1
Services						
U. S. A.	6,752	79	79	297	301	-1.5
U. A. E.	5,780	67	74	228	256	-11.0
U. K.	4,517	53	40	175	159	10.3
Saudi Arabia	3,598	42	50	166	171	-2.9
China-Peoples Republic Of	3,427	40	68	159	153	3.5
Singapore	2,246	26	17	99	82	19.9
Kuwait	851	10	14	75	54	37.2
Malaysia	1,086	13	13	57	39	43.9
Japan	1,354	16	9	52	44	18.9
Germany	1,470	17	14	49	58	-16.6
Switzerland	786	9	11	43	37	17.0
Thailand	706	8	7	40	32	24.2
Turkey	212	2	2	36	8	367.7
France	902	11	12	32	39	-18.7
Hong Kong	709	8	7	31	19	65.4
All Other	23,175	270	265	805	784	2.6
(D) Total Import of Services	57,573	670	681	2,342	2,237	4.7
Total Import of Goods & Services (C+D)	280,278	3,262	3,429	13,143	12,415	5.9

Figure 4: % Share of Major Countries in Import Payments (Banks) During Jul-Oct FY11

Note: % Share is based on Import Payments through Banks

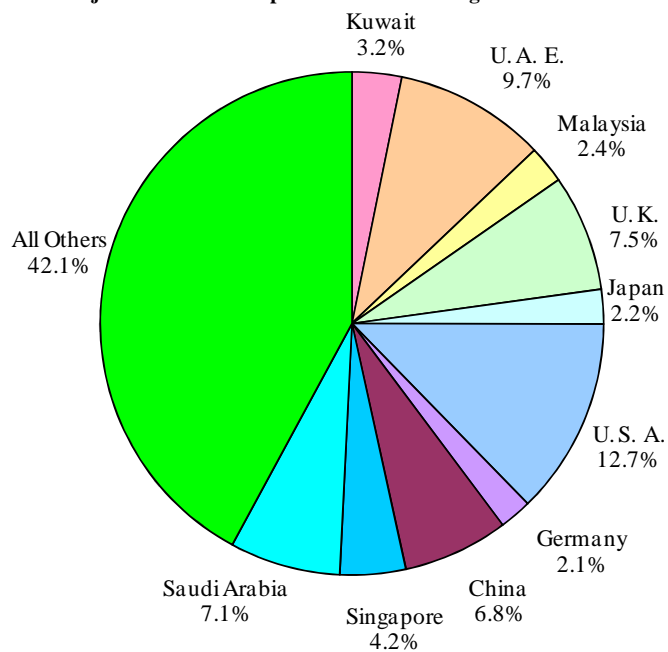
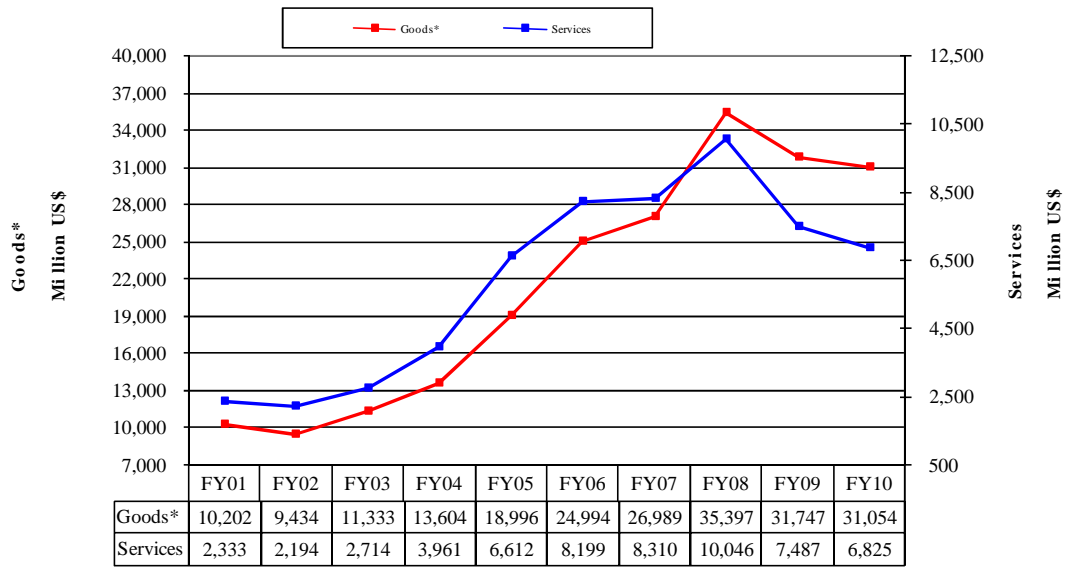
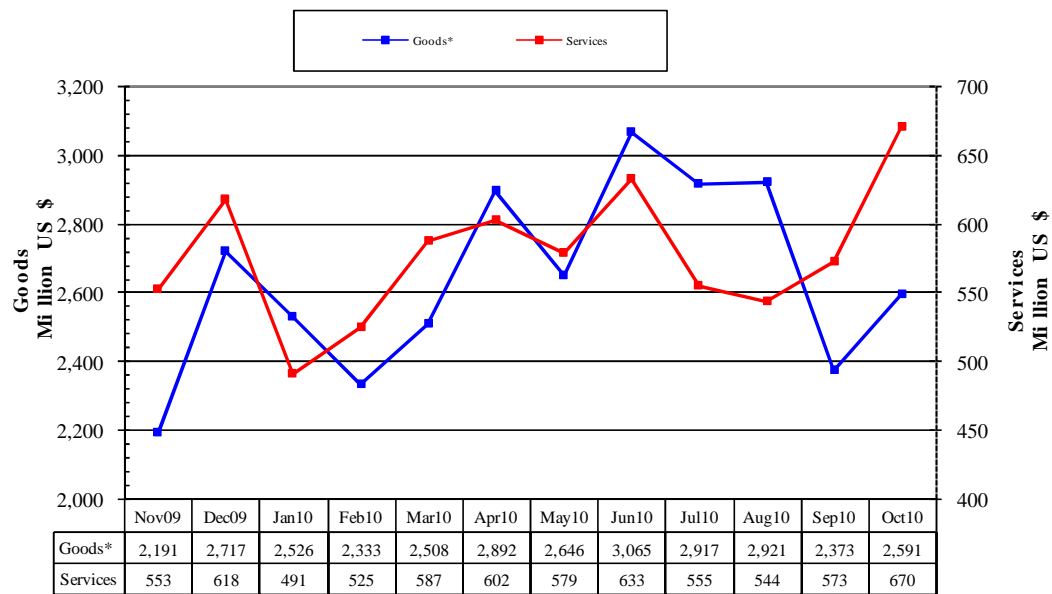
Figure 5: % Share of Major Countries in Import of Services During Jul-Oct FY11

Figure 6: Annual Import of Goods & Services from FY01 to FY10**Figure 7: Monthly Imports of Goods & Services**

* The data before FY05 is import general merchandise based on Balance of Payments Manual 4 (BPM 4) and onward on Balance of Payments Manual 5 (BPM 5).

Table 4: Annual, Quarterly & Monthly Import of Goods**

(Million US\$)

Period	FY02	FY03	FY04	FY05	FY06	FY07	FY08	FY09	FY10	FY11
Annual	9,434	11,333	13,604	18,996	24,994	26,989	35,397	31,747	31,054	10,802*
Growth (%)	-7.5	20.1	20.0	39.6	31.6	8.0	31.2	-10.3	-2.2	
<u>Quarter-wise</u>										
Quarter-I	2,412 (25.6)	2,769 (24.4)	3,014 (22.2)	4,175 (22.0)	5,925 (23.7)	6,933 (25.7)	6,940 (19.6)	10,230 (32.2)	7,429 (23.9)	8,210
Quarter-II	2,216 (23.5)	2,853 (25.2)	3,204 (23.6)	5,047 (26.6)	6,074 (24.3)	6,768 (25.1)	8,548 (24.1)	8,077 (25.4)	7,655 (24.7)	
Quarter-III	2,233 (23.7)	2,744 (24.2)	3,602 (26.5)	4,801 (25.3)	6,261 (25.1)	6,454 (23.9)	9,765 (27.6)	6,275 (19.8)	7,367 (23.7)	
Quarter-IV	2,573 (27.3)	2,967 (26.2)	3,784 (27.8)	4,973 (26.2)	6,734 (26.9)	6,834 (25.3)	10,144 (28.7)	7,165 (22.6)	8,603 (27.7)	
<u>Month-wise</u>										
July	778 (8.2)	943 (8.3)	1,020 (7.5)	1,440 (7.6)	1,772 (7.1)	2,418 (9.0)	2,411 (6.8)	3,373 (10.6)	2,811 (9.1)	2,917
August	850 (9.0)	974 (8.6)	930 (6.8)	1,311 (6.9)	2,087 (8.4)	2,308 (8.6)	2,259 (6.4)	3,162 (10.0)	2,171 (7.0)	2,921
September	784 (8.3)	852 (7.5)	1,064 (7.8)	1,424 (7.5)	2,066 (8.3)	2,207 (8.2)	2,269 (6.4)	3,694 (11.6)	2,447 (7.9)	2,373
October	757 (8.0)	899 (7.9)	1,057 (7.8)	1,616 (8.5)	2,055 (8.2)	2,205 (8.2)	2,604 (7.4)	3,243 (10.2)	2,748 (8.8)	2,591
November	735 (7.8)	920 (8.1)	876 (6.4)	1,745 (9.2)	2,059 (8.2)	2,161 (8.0)	2,963 (8.4)	2,233 (7.0)	2,191 (7.1)	
December	724 (7.7)	1,034 (9.1)	1,271 (9.3)	1,686 (8.9)	1,960 (7.8)	2,402 (8.9)	2,980 (8.4)	2,601 (8.2)	2,717 (8.7)	
January	796 (8.4)	924 (8.2)	1,168 (8.6)	1,427 (7.5)	2,070 (8.3)	2,105 (7.8)	3,329 (9.4)	2,140 (6.7)	2,526 (8.1)	
February	721 (7.6)	827 (7.3)	1,212 (8.9)	1,591 (8.4)	1,886 (7.5)	2,226 (8.2)	2,913 (8.2)	1,884 (5.9)	2,333 (7.5)	
March	716 (7.6)	993 (8.8)	1,222 (9.0)	1,783 (9.4)	2,305 (9.2)	2,123 (7.9)	3,523 (10.0)	2,251 (7.1)	2,508 (8.1)	
April	786 (8.3)	979 (8.6)	1,230 (9.0)	1,508 (7.9)	1,682 (6.7)	2,185 (8.1)	3,391 (9.6)	2,370 (7.5)	2,892 (9.3)	
May	834 (8.8)	959 (8.5)	1,166 (8.6)	1,741 (9.2)	2,361 (9.4)	2,214 (8.2)	3,246 (9.2)	2,002 (6.3)	2,646 (8.5)	
June	953 (10.1)	1,029 (9.1)	1,388 (10.2)	1,724 (9.1)	2,691 (10.8)	2,435 (9.0)	3,507 (9.9)	2,793 (8.8)	3,065 (9.9)	

Notes: 1. Figures in parentheses are percentage to annual import payments of the respective years

2. Due to rounding off separate items, totals may show minor differences

* The total include figures for July to current month

** The data before FY05 is import general merchandise based on Balance of Payments Manual 4 (BPM 4) and onward on Balance of Payments Manual 5 (BPM 5).

Table 5: Annual, Quarterly & Monthly Import of Services

(Million US\$)

Period	FY02	FY03	FY04	FY05	FY06	FY07	FY08	FY09	FY10	FY11
Annual	2,194	2,714	3,961	6,612	8,199	8,310	10,046	7,487	6,825	2,342*
Growth (%)	-6.0	23.7	45.9	66.9	24.0	1.4	20.9	-25.5	-8.8	
<u>Quarter-wise</u>										
Quarter-I	586 (26.7)	579 (21.3)	799 (20.2)	1,449 (21.9)	1,953 (23.8)	2,039 (24.5)	2,194 (21.8)	2,392 (31.9)	1,556 (22.8)	1,672
Quarter-II	531 (24.2)	586 (21.6)	945 (23.9)	1,669 (25.2)	2,061 (25.1)	2,193 (26.4)	2,548 (25.4)	2,021 (27.0)	1,852 (27.1)	
Quarter-III	552 (25.2)	649 (23.9)	1,097 (27.7)	1,764 (26.7)	2,061 (25.1)	2,014 (24.2)	2,569 (25.6)	1,389 (18.6)	1,603 (23.5)	
Quarter-IV	525 (23.9)	900 (33.2)	1,120 (28.3)	1,730 (26.2)	2,124 (25.9)	2,064 (24.8)	2,735 (27.2)	1,685 (22.5)	1,814 (26.6)	
<u>Month-wise</u>										
July	178 (8.1)	181 (6.7)	305 (7.7)	432 (6.5)	573 (7.0)	735 (8.8)	755 (7.5)	743 (9.9)	566 (8.3)	555
August	189 (8.6)	184 (6.8)	207 (5.2)	473 (7.2)	735 (9.0)	619 (7.4)	757 (7.5)	816 (10.9)	477 (7.0)	544
September	219 (10.0)	214 (7.9)	287 (7.2)	544 (8.2)	645 (7.9)	685 (8.2)	682 (6.8)	833 (11.1)	513 (7.5)	573
October	190 (8.7)	189 (7.0)	327 (8.3)	525 (7.9)	626 (7.6)	645 (7.8)	782 (7.8)	839 (11.2)	681 (10.0)	670
November	180 (8.2)	195 (7.2)	238 (6.0)	489 (7.4)	674 (8.2)	782 (9.4)	963 (9.6)	577 (7.7)	553 (8.1)	
December	161 (7.3)	202 (7.4)	380 (9.6)	655 (9.9)	761 (9.3)	766 (9.2)	803 (8.0)	605 (8.1)	618 (9.1)	
January	159 (7.2)	248 (9.1)	378 (9.5)	539 (8.2)	672 (8.2)	683 (8.2)	894 (8.9)	448 (6.0)	491 (7.2)	
February	166 (7.6)	185 (6.8)	339 (8.6)	561 (8.5)	622 (7.6)	633 (7.6)	751 (7.5)	458 (6.1)	525 (7.7)	
March	227 (10.3)	216 (8.0)	380 (9.6)	664 (10.0)	767 (9.4)	698 (8.4)	924 (9.2)	483 (6.5)	587 (8.6)	
April	166 (7.6)	331 (12.2)	379 (9.6)	610 (9.2)	617 (7.5)	680 (8.2)	999 (9.9)	542 (7.2)	602 (8.8)	
May	147 (6.7)	276 (10.2)	355 (9.0)	582 (8.8)	744 (9.1)	657 (7.9)	797 (7.9)	523 (7.0)	579 (8.5)	
June	212 (9.7)	293 (10.8)	386 (9.7)	538 (8.1)	763 (9.3)	727 (8.7)	939 (9.3)	620 (8.3)	633 (9.3)	

Notes: 1. Figures in parentheses are percentage to annual import payments of the respective years

2. Due to rounding off separate items, totals may show minor differences

* The total include figures for July to current month