

SUMMARY

Table 1(a) : Monthly Import of Goods & Services

(Million US\$)

Items	November	
	2010	2009
I. Import Payments (Banks)	2,813	2,324
II. Freight & Insurance	225	186
III. Other Import unaccounted by Banks	124	34
Unclassified Imports	105	14
Imports NRI, Sale of Duty Free Shops	5	4
Imports under Foreign Economic Assistance	6	7
Land borne Imports with Afghanistan	11	7
PIA & PNSC	2	4
Capital Equipment	0	0
Cost of Imports (Ex. Cos.)	0	0
Refund & Rebate	-5	-2
Import from EPZ	0	0
(A) Import General Merchandise (I-II+III)	2,712	2,171
(B) Other Import under BPM5*	36	23
(C) Import of Goods (A+B)	2,748	2,194
(D) Import of Services	567	562
(E) Import of Goods & Services (C+D)	3,315	2,755

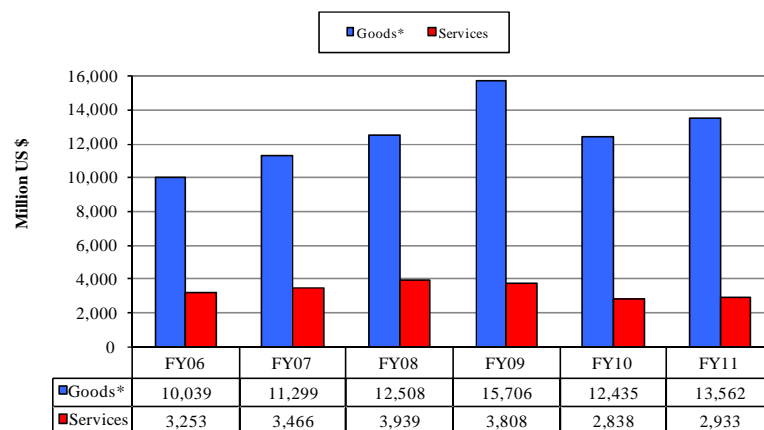
* See "Introduction" for details:

Table 1(b) : Key Indicators of Import of Goods and Services

(Million US\$)

November 2010	3,315
October 2010	3,271
% Change during November 2010 over October 2010	1.3
November 2009	2,755
% Change during November 2010 over November 2009	20.3
July-November 2010-11	16,496
July-November 2009-10	15,273
% Change during July-November 2010-11 over July-November 2009-10	8.0
Monthly average during July-November 2010-11	3,299
Monthly average during July-November 2009-10	3,055
FY10	38,128
FY09	39,234
% Change during FY10 over FY09	-2.8
Monthly average during FY10	3,177
Monthly average during FY09	3,270

Figure 1. Import During Jul-Nov

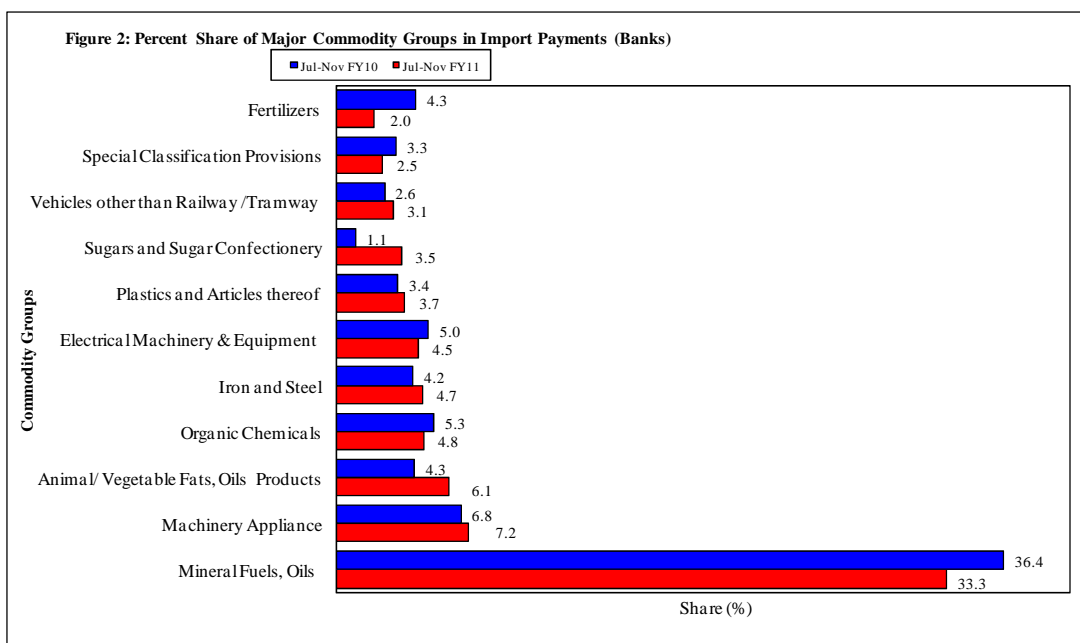


*The data is import of goods based on Balance of Payments Manual 5 (BPM 5).

Table 2: Import Payments by Major Groups of Goods & Services

(Amount in Million)

Goods/ Services	November			July-November		% Change
	2010	2010	2009	2010-11	2009-10	
	Pak Rs.	US \$				
Goods						
I. Total Import Payments (Banks)	240,655	2,813	2,324	13,891	12,320	12.8
Mineral Fuels, Oils and Their Distillation Product	83,701	978	789	4,620	4,483	3.1
Nuclear Reactors, Boilers, Machinery and Appliance	14,606	171	127	1,004	836	20.1
Animal or Vegetable Fats, Oils & Cleavage Products	16,243	190	88	850	527	61.3
Organic Chemicals	11,258	132	115	661	655	0.9
Iron and Steel	7,156	84	112	650	516	26.0
Electrical Machinery & Equipment and Parts thereof	8,923	104	111	620	620	0.1
Plastics and Articles thereof	9,262	108	77	521	415	25.5
Sugars and Sugar Confectionery	12,225	143	16	492	131	275.7
Vehicles other than Railway /Tramway Rolling Stock	7,484	87	67	431	322	33.8
Special Classification Provisions	8,415	98	144	352	401	-12.3
Fertilizers	4,330	51	163	285	534	-46.7
Cotton	3,927	46	22	270	144	88.0
Edible Vegetables	4,732	55	23	230	113	104.1
Man-Made Staple Fibers	4,008	47	25	211	140	50.1
Miscellaneous Chemical Products	3,392	40	40	204	210	-3.1
Man-Made Filaments	4,005	47	23	193	119	61.9
Oil Seeds and Oleaginous Fruit	2,597	30	42	192	181	5.9
Ships, Boats and Floating Structures	2,373	28	16	187	70	165.9
All Others	32,017	374	324	1,919	1,902	0.9
II. Freight & Insurance	19,252	225	186	1,111	986	12.8
III. Other Import Unaccounted by Banks	10,608	124	34	632	989	-36.1
(A) Import General Merchandise (I-II+III)	232,011	2,712	2,171	13,412	12,324	8.8
(B) Other Import under BPM5*	3,037	36	23	150	111	35.2
(C) Import of Goods (A+B)	235,048	2,748	2,194	13,562	12,435	9.1
Services						
Transportation	27,252	318	265	1,554	1,436	8.2
Travel	5,073	59	79	412	386	6.9
Communication Services	937	11	23	67	68	-1.1
Construction Services	617	7	2	12	12	-1.0
Insurance Services	865	10	10	63	66	-4.8
Financial Services	999	12	7	46	41	12.0
Computer & Information Services	1,026	12	12	54	49	10.6
Royalties & License fees	1,277	15	9	46	35	32.0
Other Business Services	6,890	81	85	426	490	-13.1
Personal, cultural & recreational Services	250	3	2	7	11	-36.6
Government Services	3,371	39	68	246	245	0.6
(D) Total Import of Services	48,557	567	562	2,933	2,838	3.3
Total Import of Goods & Services (C+D)	283,605	3,315	2,755	16,496	15,273	8.0



Note: - The share is based on the share of commodities in Import Payments through Banks

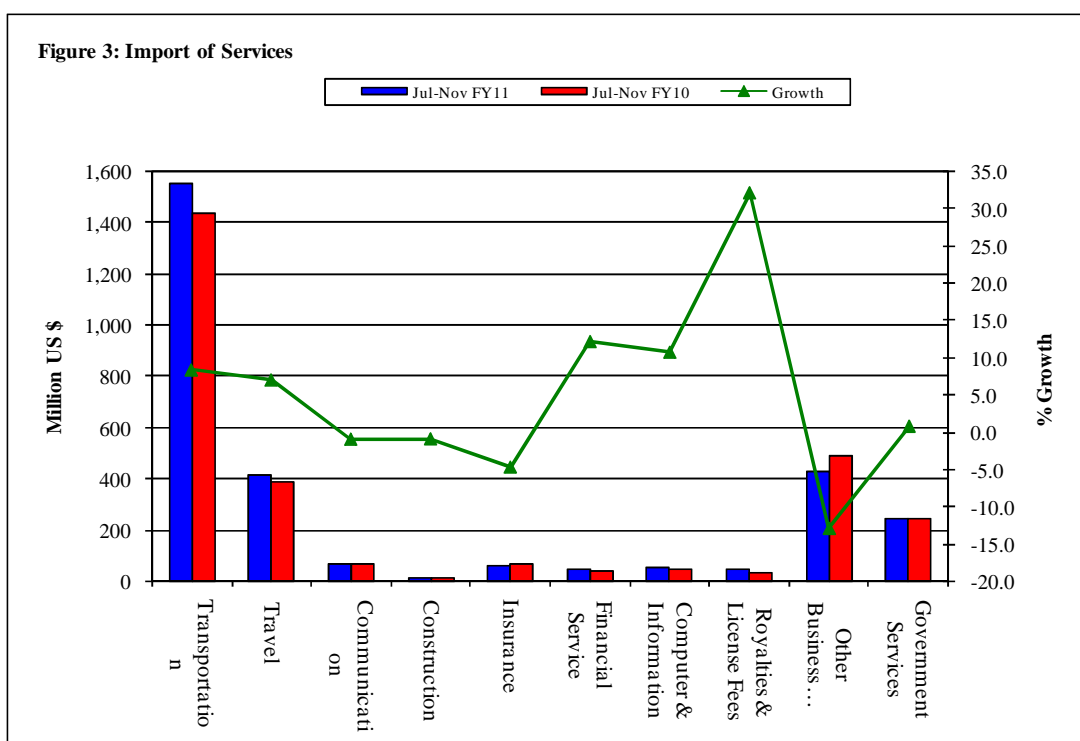
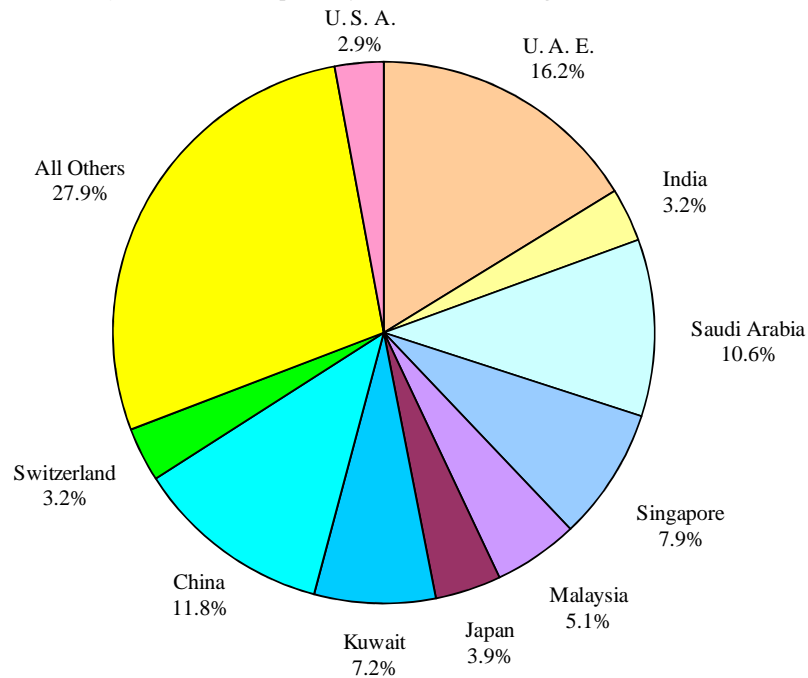


Table 3: Import of Goods & Services by Major Countries

(Amount in Million)

Country	November			July-November		%
	2010	2010	2009	2010-11	2009-10	Change
	Pak Rs.	US \$				
Goods						
I. Total Import Payments (Banks)	240,655	2,813	2,324	13,891	12,320	12.8
U. A. E.	42,108	492	275	2,255	2,036	10.8
China	25,585	299	257	1,638	1,206	35.8
Saudi Arabia	30,367	355	369	1,467	1,478	-0.7
Singapore	18,211	213	157	1,100	799	37.6
Kuwait	14,314	167	168	1,005	792	27.0
Malaysia	14,493	169	91	704	481	46.4
Japan	11,865	139	83	547	442	23.7
Switzerland	10,069	118	93	450	441	1.9
India	8,792	103	59	445	337	32.0
U. S. A.	5,841	68	86	405	382	5.9
Germany	7,397	86	104	374	468	-20.0
U. K.	4,208	49	63	271	299	-9.4
Hong Kong	2,500	29	24	217	115	89.0
Thailand	3,810	45	28	215	143	50.4
South Korea	3,204	37	39	206	181	14.4
All Others	37,892	443	428	2,593	2,722	-4.7
II. Freight & Insurance	19,252	225	186	1,111	986	12.8
III. Other Import Unaccounted by Banks	10,608	124	34	632	989	-36.1
(A) Import General Merchandise (I-II+III)	232,011	2,712	2,171	13,412	12,324	8.8
(B) Other Import under BPM5*	3,037	36	23	150	111	35.2
(C) Import of Goods (A+B)	235,048	2,748	2,194	13,562	12,435	9.1
Services						
U. S. A.	5,656	66	107	366	423	-13.7
U. A. E.	5,817	68	65	303	294	2.9
Saudi Arabia	6,392	75	44	237	233	1.8
U. K.	2,926	34	36	214	209	2.5
China	3,382	40	39	200	181	10.1
Singapore	2,627	31	22	129	107	20.9
Kuwait	1,299	15	15	90	70	28.7
Malaysia	1,406	16	10	74	49	51.3
Japan	1,850	22	13	71	65	10.8
Germany	1,429	17	22	65	88	-26.4
Switzerland	1,407	16	11	60	47	26.3
Thailand	630	7	7	43	39	10.9
France	636	7	6	38	50	-24.0
India	772	9	5	37	28	31.4
Turkey	173	2	1	36	7	390.1
All Other	12,155	142	159	972	949	2.4
(D) Total Import of Services	48,557	567	562	2,933	2,838	3.3
Total Import of Goods & Services (C+D)	283,605	3,315	2,755	16,496	15,273	8.0

Figure 4: % Share of Major Countries in Import Payments (Banks) During Jul-Nov FY11

Note: % Share is based on Import Payments through Banks

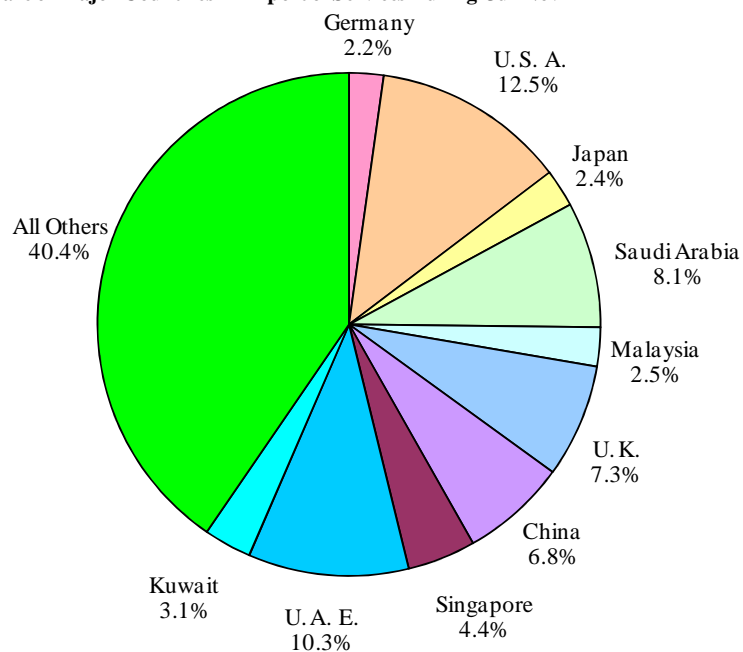
Figure 5: % Share of Major Countries in Import of Services During Jul-Nov FY11

Figure 6: Annual Import of Goods & Services from FY01 to FY10

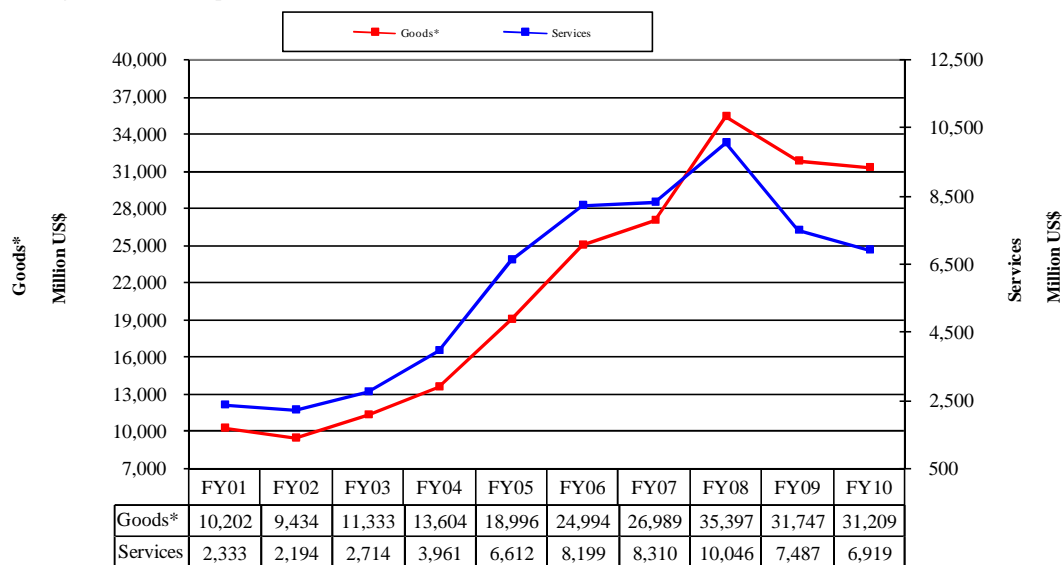
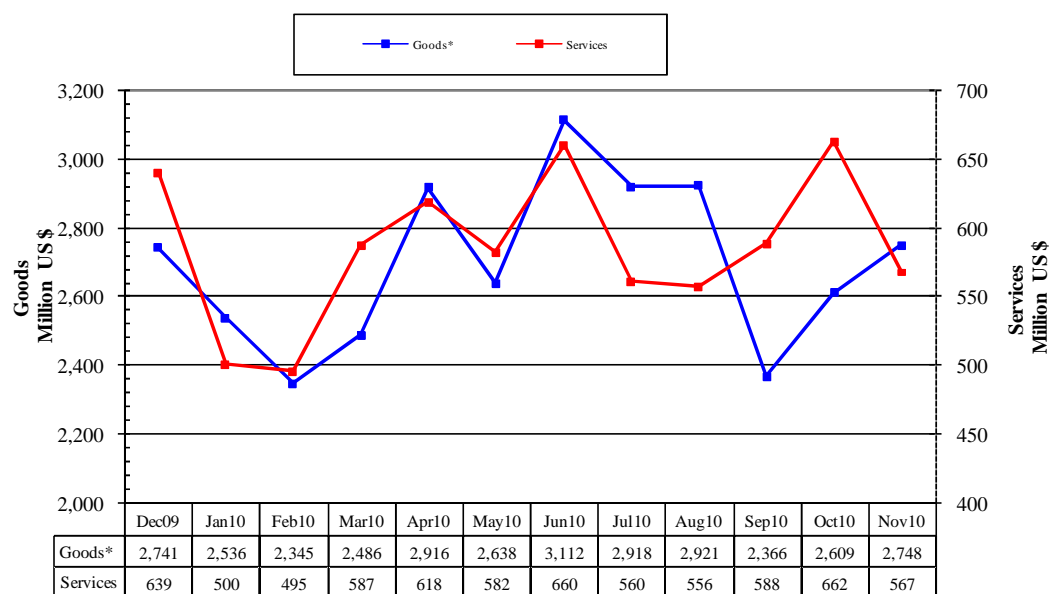


Figure 7: Monthly Imports of Goods & Services



* The data before FY05 is import general merchandise based on Balance of Payments Manual 4 (BPM 4) and onward on Balance of Payments Manual 5 (BPM 5).

Table 4: Annual, Quarterly & Monthly Import of Goods** (Million US\$)

Period	FY02	FY03	FY04	FY05	FY06	FY07	FY08	FY09	FY10	FY11
Annual	9,434	11,333	13,604	18,996	24,994	26,989	35,397	31,747	31,209	13,562*
Growth (%)	-7.5	20.1	20.0	39.6	31.6	8.0	31.2	-10.3	-1.7	
<u>Quarter-wise</u>										
Quarter-I	2,412 (25.6)	2,769 (24.4)	3,014 (22.2)	4,175 (22.0)	5,925 (23.7)	6,933 (25.7)	6,940 (19.6)	10,230 (32.2)	7,485 (24.0)	8,205
Quarter-II	2,216 (23.5)	2,853 (25.2)	3,204 (23.6)	5,047 (26.6)	6,074 (24.3)	6,768 (25.1)	8,548 (24.1)	8,077 (25.4)	7,619 (24.6)	
Quarter-III	2,233 (23.7)	2,744 (24.2)	3,602 (26.5)	4,801 (25.3)	6,261 (25.1)	6,454 (23.9)	9,765 (27.6)	6,275 (19.8)	7,367 (23.6)	
Quarter-IV	2,573 (27.3)	2,967 (26.2)	3,784 (27.8)	4,973 (26.2)	6,734 (26.9)	6,834 (25.3)	10,144 (28.7)	7,165 (22.6)	8,666 (27.8)	
<u>Month-wise</u>										
July	778 (8.2)	943 (8.3)	1,020 (7.5)	1,440 (7.6)	1,772 (7.1)	2,418 (9.0)	2,411 (6.8)	3,373 (10.6)	2,818 (9.0)	2,918
August	850 (9.0)	974 (8.6)	930 (6.8)	1,311 (6.9)	2,087 (8.4)	2,308 (8.6)	2,259 (6.4)	3,162 (10.0)	2,189 (7.0)	2,921
September	784 (8.3)	852 (7.5)	1,064 (7.8)	1,424 (7.5)	2,066 (8.3)	2,207 (8.2)	2,269 (6.4)	3,694 (11.6)	2,478 (7.9)	2,366
October	757 (8.0)	899 (7.9)	1,057 (7.8)	1,616 (8.5)	2,055 (8.2)	2,205 (8.2)	2,604 (7.4)	3,243 (10.2)	2,756 (8.8)	2,609
November	735 (7.8)	920 (8.1)	876 (6.4)	1,745 (9.2)	2,059 (8.2)	2,161 (8.0)	2,963 (8.4)	2,233 (7.0)	2,194 (7.0)	2,748
December	724 (7.7)	1,034 (9.1)	1,271 (9.3)	1,686 (8.9)	1,960 (7.8)	2,402 (8.9)	2,980 (8.4)	2,601 (8.2)	2,741 (8.8)	
January	796 (8.4)	924 (8.2)	1,168 (8.6)	1,427 (7.5)	2,070 (8.3)	2,105 (7.8)	3,329 (9.4)	2,140 (6.7)	2,536 (8.1)	
February	721 (7.6)	827 (7.3)	1,212 (8.9)	1,591 (8.4)	1,886 (7.5)	2,226 (8.2)	2,913 (8.2)	1,884 (5.9)	2,345 (7.5)	
March	716 (7.6)	993 (8.8)	1,222 (9.0)	1,783 (9.4)	2,305 (9.2)	2,123 (7.9)	3,523 (10.0)	2,251 (7.1)	2,486 (8.0)	
April	786 (8.3)	979 (8.6)	1,230 (9.0)	1,508 (7.9)	1,682 (6.7)	2,185 (8.1)	3,391 (9.6)	2,370 (7.5)	2,916 (9.3)	
May	834 (8.8)	959 (8.5)	1,166 (8.6)	1,741 (9.2)	2,361 (9.4)	2,214 (8.2)	3,246 (9.2)	2,002 (6.3)	2,638 (8.5)	
June	953 (10.1)	1,029 (9.1)	1,388 (10.2)	1,724 (9.1)	2,691 (10.8)	2,435 (9.0)	3,507 (9.9)	2,793 (8.8)	3,112 (10.0)	

Notes: 1. Figures in parentheses are percentage to annual import payments of the respective years

2. Due to rounding off separate items, totals may show minor differences

* The total include figures for July to current month

** The data before FY05 is import general merchandise based on Balance of Payments Manual 4 (BPM 4) and onward on Balance of Payments Manual 5 (BPM 5).

Table 5: Annual, Quarterly & Monthly Import of Services

(Million US\$)

Period	FY02	FY03	FY04	FY05	FY06	FY07	FY08	FY09	FY10	FY11
Annual	2,194	2,714	3,961	6,612	8,199	8,310	10,046	7,487	6,919	2,933*
Growth (%)	-6.0	23.7	45.9	66.9	24.0	1.4	20.9	-25.5	-7.6	
<u>Quarter-wise</u>										
Quarter-I	586 (26.7)	579 (21.3)	799 (20.2)	1,449 (21.9)	1,953 (23.8)	2,039 (24.5)	2,194 (21.8)	2,392 (31.9)	1,585 (22.9)	1,704
Quarter-II	531 (24.2)	586 (21.6)	945 (23.9)	1,669 (25.2)	2,061 (25.1)	2,193 (26.4)	2,548 (25.4)	2,021 (27.0)	1,892 (27.3)	
Quarter-III	552 (25.2)	649 (23.9)	1,097 (27.7)	1,764 (26.7)	2,061 (25.1)	2,014 (24.2)	2,569 (25.6)	1,389 (18.6)	1,582 (22.9)	
Quarter-IV	525 (23.9)	900 (33.2)	1,120 (28.3)	1,730 (26.2)	2,124 (25.9)	2,064 (24.8)	2,735 (27.2)	1,685 (22.5)	1,860 (26.9)	
<u>Month-wise</u>										
July	178 (8.1)	181 (6.7)	305 (7.7)	432 (6.5)	573 (7.0)	735 (8.8)	755 (7.5)	743 (9.9)	568 (8.2)	560
August	189 (8.6)	184 (6.8)	207 (5.2)	473 (7.2)	735 (9.0)	619 (7.4)	757 (7.5)	816 (10.9)	489 (7.1)	556
September	219 (10.0)	214 (7.9)	287 (7.2)	544 (8.2)	645 (7.9)	685 (8.2)	682 (6.8)	833 (11.1)	528 (7.6)	588
October	190 (8.7)	189 (7.0)	327 (8.3)	525 (7.9)	626 (7.6)	645 (7.8)	782 (7.8)	839 (11.2)	691 (10.0)	662
November	180 (8.2)	195 (7.2)	238 (6.0)	489 (7.4)	674 (8.2)	782 (9.4)	963 (9.6)	577 (7.7)	562 (8.1)	567
December	161 (7.3)	202 (7.4)	380 (9.6)	655 (9.9)	761 (9.3)	766 (9.2)	803 (8.0)	605 (8.1)	639 (9.2)	
January	159 (7.2)	248 (9.1)	378 (9.5)	539 (8.2)	672 (8.2)	683 (8.2)	894 (8.9)	448 (6.0)	500 (7.2)	
February	166 (7.6)	185 (6.8)	339 (8.6)	561 (8.5)	622 (7.6)	633 (7.6)	751 (7.5)	458 (6.1)	495 (7.2)	
March	227 (10.3)	216 (8.0)	380 (9.6)	664 (10.0)	767 (9.4)	698 (8.4)	924 (9.2)	483 (6.5)	587 (8.5)	
April	166 (7.6)	331 (12.2)	379 (9.6)	610 (9.2)	617 (7.5)	680 (8.2)	999 (9.9)	542 (7.2)	618 (8.9)	
May	147 (6.7)	276 (10.2)	355 (9.0)	582 (8.8)	744 (9.1)	657 (7.9)	797 (7.9)	523 (7.0)	582 (8.4)	
June	212 (9.7)	293 (10.8)	386 (9.7)	538 (8.1)	763 (9.3)	727 (8.7)	939 (9.3)	620 (8.3)	660 (9.5)	

Notes: 1. Figures in parentheses are percentage to annual import payments of the respective years

2. Due to rounding off separate items, totals may show minor differences

* The total include figures for July to current month