

## SUMMARY

Table 1(a) : Monthly Import of Goods &amp; Services

(Million US\$)

Items	May	
	2010	2009
I. Import Payments (Banks)	2,778	2,089
II. Freight & Insurance	222	167
III. Other Import unaccounted by Banks	23	60
Unclassified Imports	1	9
Imports NRI, Sale of Duty Free Shops	4	3
Imports under Foreign Economic Assistance	17	38
Land borne Imports with Afghanistan	7	6
PIA & PNSC	2	2
Capital Equipment	0	0
Cost of Imports (Ex. Cos.)	0	0
Refund & Rebate	-8	-7
Import from EPZ	0	9
(A) Import General Merchandise (I-II+III)	2,579	1,982
(B) Other Import under BPM5*	14	20
(C) Import of Goods (A+B)	2,593	2,002
(D) Import of Services	563	523
(E) Import of Goods & Services (C+D)	3,156	2,525

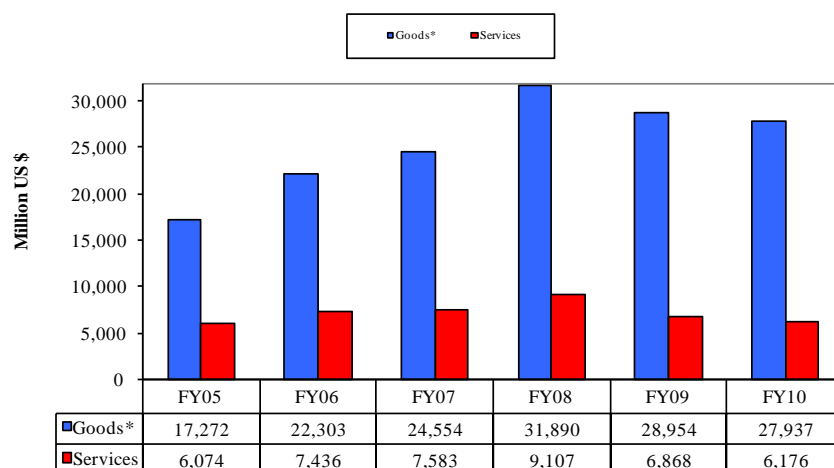
\* See "Introduction" for details:

Table 1(b) : Key Indicators of Import of Goods and Services

(Million US\$)

May 2010	3,156
April 2010	3,494
% Change during May 2010 over April 2010	-9.7
May 2009	2,525
% Change during May 2010 over May 2009	25.0
July-May 2009-10	34,113
July-May 2008-09	35,822
% Change during July-May 2009-10 over July-May 2008-09	-4.8
Monthly average during July-May 2009-10	3,101
Monthly average during July-May 2008-09	3,257
FY09	39,235
FY08	45,443
% Change during FY09 over FY08	-13.7
Monthly average during FY09	3,270
Monthly average during FY08	3,787

Figure 1. Import During Jul-May

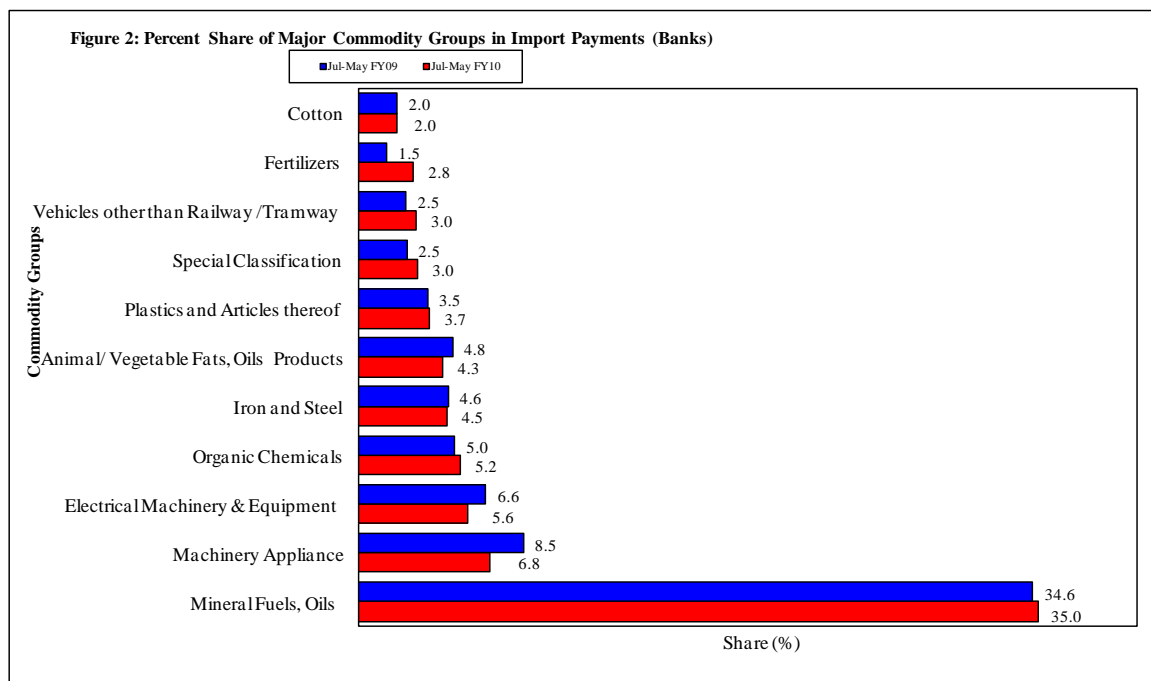


\*The data is import of goods based on Balance of Payments Manual 5 (BPM 5).

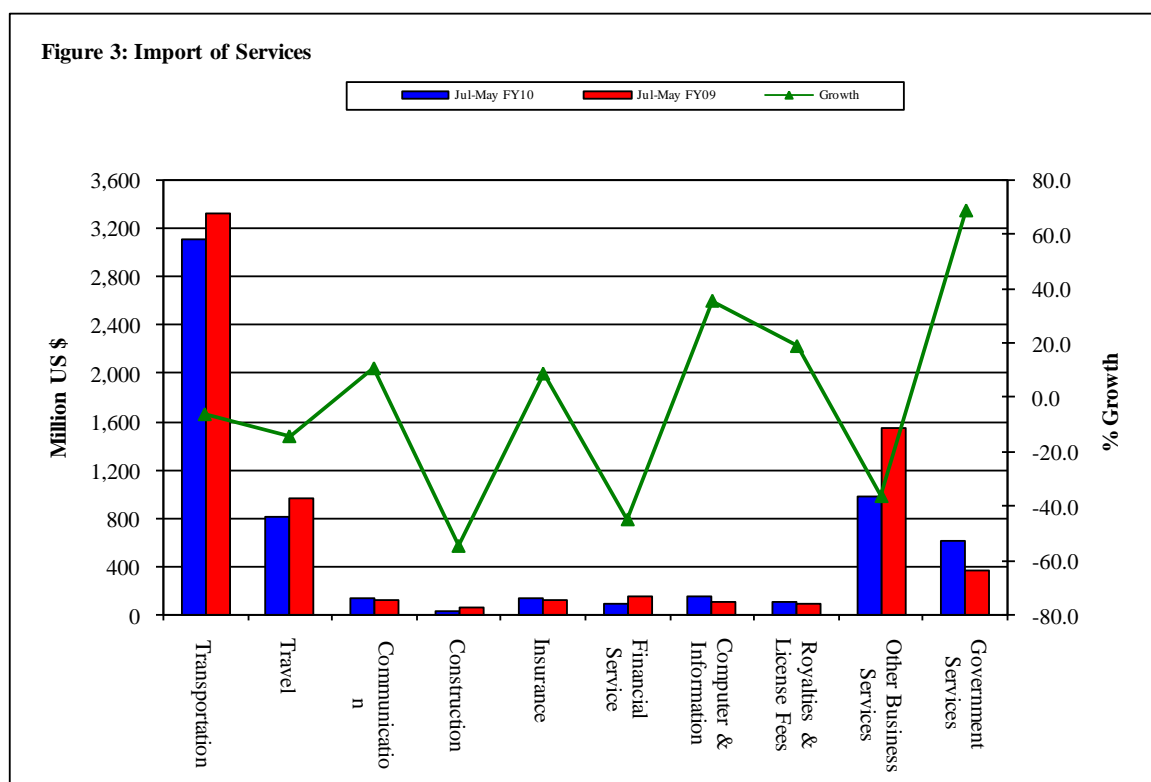
Table 2: Import Payments by Major Groups of Goods &amp; Services

(Amount in Million)

Goods/ Services	May			July-May		% Change
	2010	2010	2009	2009-10	2008-09	
	Pak Rs.	US \$				
Goods						
I. Total Import Payments (Banks)	234,316	2,778	2,089	28,109	28,602	-1.7
Mineral Fuels, Oils and Their Distillation Product	89,822	1,065	579	9,825	9,904	-0.8
Nuclear Reactors, Boilers, Machinery and Appliance	13,345	158	160	1,903	2,419	-21.3
Electrical Machinery & Equipment and Parts thereof	9,757	116	127	1,576	1,874	-15.9
Organic Chemicals	10,649	126	117	1,470	1,416	3.8
Iron and Steel	13,067	155	199	1,272	1,317	-3.4
Animal or Vegetable Fats, Oils & Cleavage Products	9,478	112	86	1,216	1,380	-11.9
Plastics and Articles thereof	9,005	107	76	1,027	1,012	1.5
Special Classification Provisions	4,102	49	62	849	710	19.6
Vehicles other than Railway /Tramway Rolling Stock	7,641	91	45	830	703	18.1
Fertilizers	3,562	42	38	795	418	90.2
Cotton	5,366	64	72	558	568	-1.8
Oil Seeds and Oleaginous Fruit	4,393	52	62	492	336	46.8
Miscellaneous Chemical Products	3,412	40	33	463	362	27.8
Ships, Boats and Floating Structures	2,321	28	24	372	197	89.0
Man-Made Staple Fibers	3,418	41	31	342	286	20.0
Optical, Photographic, Measuring and Medical Inst.	2,758	33	19	338	369	-8.4
Man-Made Filaments	2,989	35	26	314	245	27.9
Pharmaceutical Products	1,660	20	14	311	252	23.2
All Others	37,570	446	319	4,155	4,836	-14.1
II. Freight & Insurance	18,745	222	167	2,249	2,288	-1.7
III. Other Import Unaccounted by Banks	1,940	23	60	1,867	2,321	-19.6
(A) Import General Merchandise (I-II+III)	217,510	2,579	1,982	27,727	28,635	-3.2
(B) Other Import under BPM5*	1,164	14	20	210	319	-34.3
(C) Import of Goods (A+B)	218,674	2,593	2,002	27,937	28,954	-3.5
Services						
Transportation	25,879	307	205	3,105	3,324	-6.6
Travel	6,102	72	48	818	958	-14.7
Communication Services	835	10	10	139	126	10.3
Construction Services	96	1	12	28	62	-55.1
Insurance Services	719	9	11	136	125	8.4
Financial Services	589	7	10	86	158	-45.3
Computer & Information Services	980	12	10	148	109	35.2
Royalties & License fees	1,023	12	6	103	87	18.5
Other Business Services	7,055	84	165	982	1,553	-36.7
Personal, cultural & recreational Services	106	1	1	19	1	--
Government Services	4,043	48	45	613	364	68.4
(D) Total Import of Services	47,427	563	523	6,176	6,867	-10.1
Total Import of Goods & Services (C+D)	266,100	3,156	2,525	34,113	35,822	-4.8



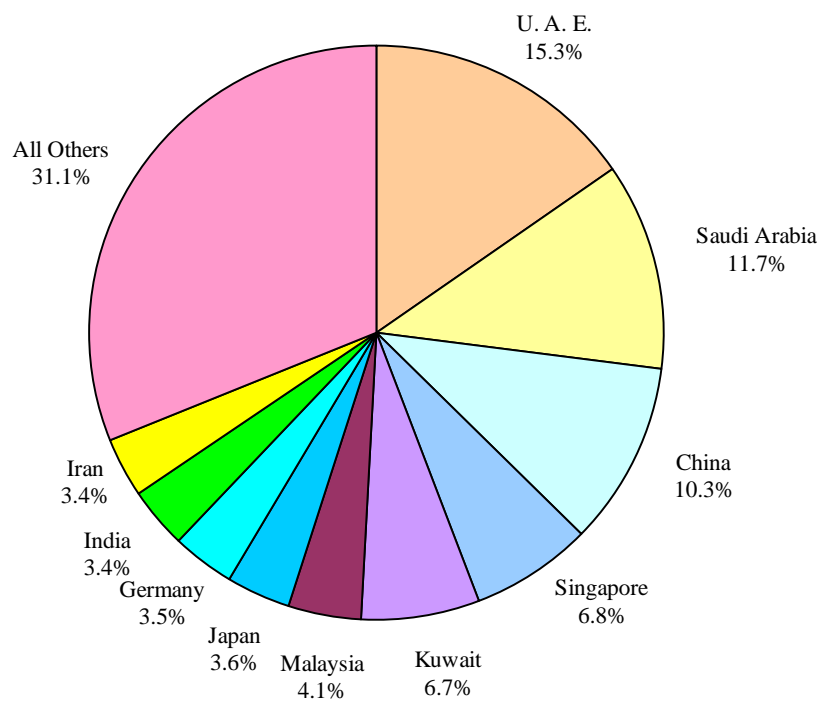
Note: - The share is based on the share of commodities in Import Payments through Banks



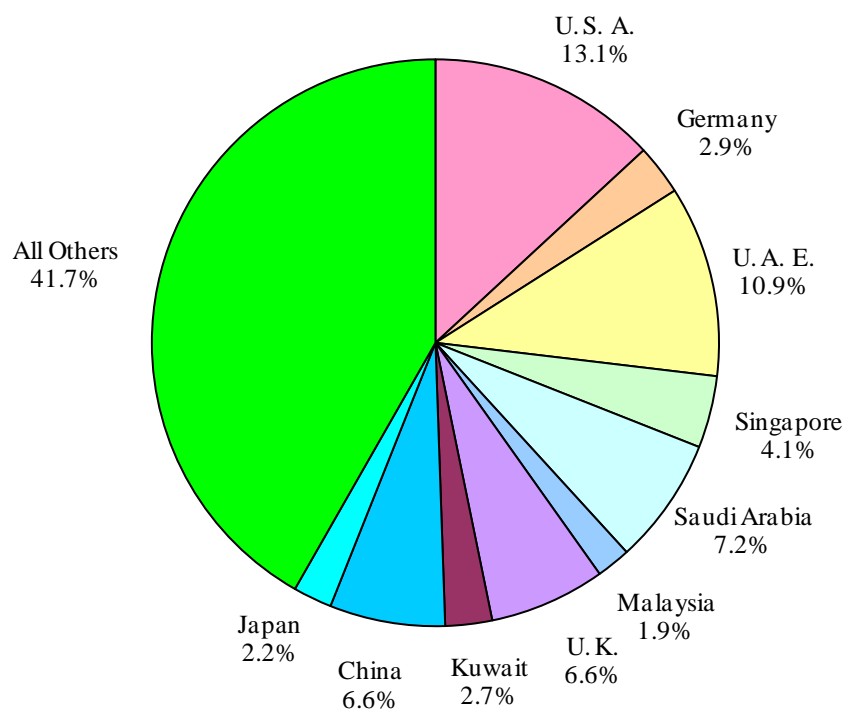
**Table 3: Import of Goods & Services by Major Countries**

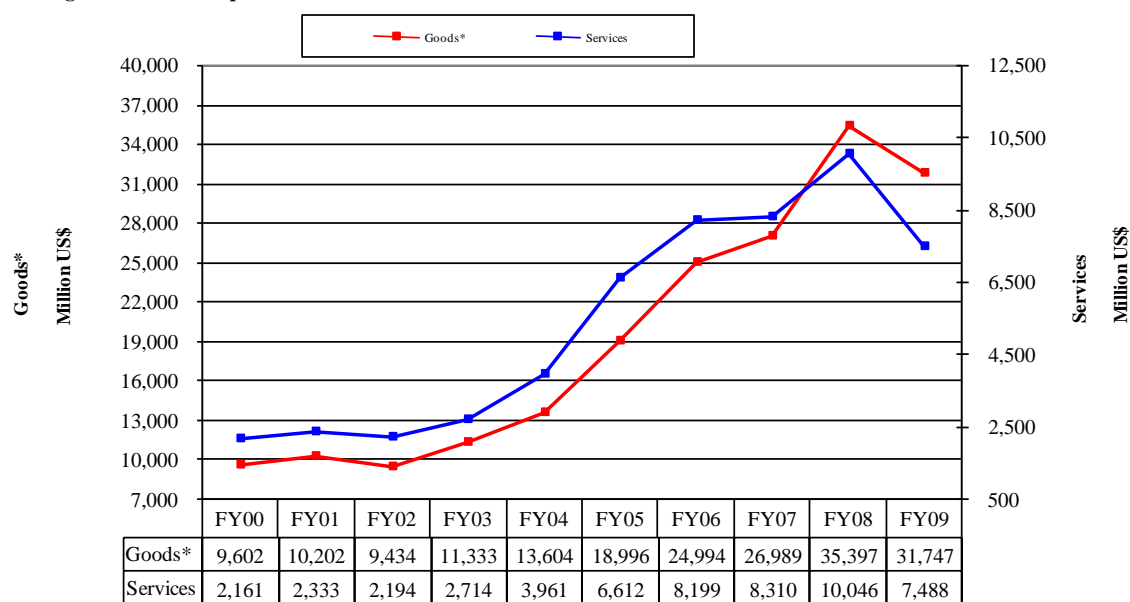
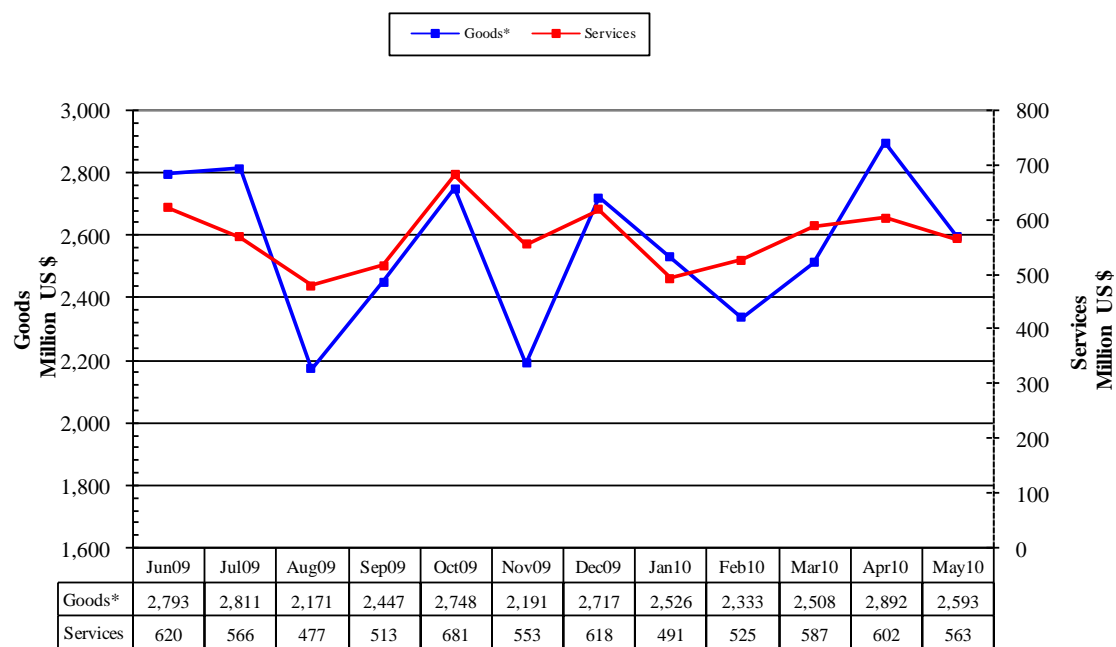
(Amount in Million)

Table 5: Import of Goods & Services by Major Countries						
Country	May			July-May		% Change
	2010	2010	2009	2009-10	2008-09	
	Pak Rs.	US \$				
<b>Goods</b>						
I. Total Import Payments (Banks)	234,316	2,778	2,089	28,109	28,602	-1.7
U. A. E.	34,754	412	147	4,314	4,057	6.3
Saudi Arabia	34,577	410	337	3,279	3,246	1.0
China	23,663	281	226	2,909	2,440	19.2
Singapore	21,203	251	148	1,920	1,396	37.5
Kuwait	14,596	173	104	1,873	2,100	-10.8
Malaysia	8,303	98	66	1,152	1,200	-4.0
Japan	6,802	81	62	1,014	995	1.9
Germany	7,154	85	60	993	1,014	-2.1
India	7,546	89	89	966	956	1.1
Iran	7,182	85	49	944	426	121.7
Switzerland	7,564	90	49	881	926	-4.9
U. S. A.	6,740	80	121	858	990	-13.3
U. K.	6,796	81	76	659	737	-10.7
South Korea	5,080	60	38	480	594	-19.3
Australia	792	9	16	367	257	42.8
All Others	41,565	493	502	5,500	7,267	-24.3
II. Freight & Insurance	18,745	222	167	2,249	2,288	-1.7
III. Other Import Unaccounted by Banks	1,940	23	60	1,867	2,321	-19.6
(A) Import General Merchandise (I-II+III)	217,510	2,579	1,982	27,727	28,635	-3.2
(B) Other Import under BPM5*	1,164	14	20	210	319	-34.3
(C) Import of Goods (A+B)	218,674	2,593	2,002	27,937	28,954	-3.5
<b>Services</b>						
U. S. A.	4,907	58	90	810	865	-6.3
U. A. E.	5,400	64	32	674	727	-7.4
Saudi Arabia	3,928	47	29	447	476	-6.1
U. K.	2,833	34	36	408	526	-22.3
China	3,249	39	25	407	580	-29.9
Singapore	2,407	29	11	254	205	23.8
Germany	1,028	12	11	177	158	12.0
Kuwait	1,325	16	10	165	182	-9.7
Japan	1,131	13	8	137	143	-4.5
Malaysia	935	11	8	120	128	-6.1
Switzerland	903	11	7	101	102	-0.8
France	570	7	4	89	123	-27.5
Thailand	672	8	9	83	81	2.7
India	622	7	7	82	81	1.6
Iran	636	8	4	77	35	121.2
All Others	16,881	200	233	2,145	2,455	-12.6
(D) Total Import of Services	47,427	563	523	6,176	6,867	-10.1
Total Import of Goods & Services (C+D)	266,100	3,156	2,525	34,113	35,822	-4.8

**Figure 4: % Share of Major Countries in Import Payments (Banks) During Jul-May FY10**

Note: % Share is based on Import Payments through Banks

**Figure 5: % Share of Major Countries in Import of Services During Jul-May FY10**

**Figure 6: Annual Import of Goods & Services from FY00 to FY09****Figure 7: Monthly Imports of Goods & Services**

\* The data before FY05 is import general merchandise based on Balance of Payments Manual 4 (BPM 4) and onward on Balance of Payments Manual 5 (BPM 5).

Table 4: Annual, Quarterly &amp; Monthly Import of Goods\*\*

(Million US\$)

Period	FY01	FY02	FY03	FY04	FY05	FY06	FY07	FY08	FY09	FY10
Annual	10,202	9,434	11,333	13,604	18,996	24,994	26,989	35,397	31,747	27,937*
Growth (%)	6.2	-7.5	20.1	20.0	39.6	31.6	8.0	31.2	-10.3	
<b>Quarter-wise</b>										
Quarter-I	2,703 (26.5)	2,412 (25.6)	2,769 (24.4)	3,014 (22.2)	4,175 (22.0)	5,925 (23.7)	6,933 (25.7)	6,940 (19.6)	10,230 (32.2)	7,429
Quarter-II	2,386 (23.4)	2,216 (23.5)	2,853 (25.2)	3,204 (23.6)	5,047 (26.6)	6,074 (24.3)	6,768 (25.1)	8,548 (24.1)	8,077 (25.4)	7,655
Quarter-III	2,670 (26.2)	2,233 (23.7)	2,744 (24.2)	3,602 (26.5)	4,801 (25.3)	6,261 (25.1)	6,454 (23.9)	9,765 (27.6)	6,275 (19.8)	7,367
Quarter-IV	2,443 (23.9)	2,573 (27.3)	2,967 (26.2)	3,784 (27.8)	4,973 (26.2)	6,734 (26.9)	6,834 (25.3)	10,144 (28.7)	7,165 (22.6)	
July	867 (8.5)	778 (8.2)	943 (8.3)	1,020 (7.5)	1,440 (7.6)	1,772 (7.1)	2,418 (9.0)	2,411 (6.8)	3,373 (10.6)	2,811
August	918 (9.0)	850 (9.0)	974 (8.6)	930 (6.8)	1,311 (6.9)	2,087 (8.4)	2,308 (8.6)	2,259 (6.4)	3,162 (10.0)	2,171
September	918 (9.0)	784 (8.3)	852 (7.5)	1,064 (7.8)	1,424 (7.5)	2,066 (8.3)	2,207 (8.2)	2,269 (6.4)	3,694 (11.6)	2,447
October	816 (8.0)	757 (8.0)	899 (7.9)	1,057 (7.8)	1,616 (8.5)	2,055 (8.2)	2,205 (8.2)	2,604 (7.4)	3,243 (10.2)	2,748
November	901 (8.8)	735 (7.8)	920 (8.1)	876 (6.4)	1,745 (9.2)	2,059 (8.2)	2,161 (8.0)	2,963 (8.4)	2,233 (7.0)	2,191
December	669 (6.6)	724 (7.7)	1,034 (9.1)	1,271 (9.3)	1,686 (8.9)	1,960 (7.8)	2,402 (8.9)	2,980 (8.4)	2,601 (8.2)	2,717
January	1,015 (9.9)	796 (8.4)	924 (8.2)	1,168 (8.6)	1,427 (7.5)	2,070 (8.3)	2,105 (7.8)	3,329 (9.4)	2,140 (6.7)	2,526
February	770 (7.5)	721 (7.6)	827 (7.3)	1,212 (8.9)	1,591 (8.4)	1,886 (7.5)	2,226 (8.2)	2,913 (8.2)	1,884 (5.9)	2,333
March	885 (8.7)	716 (7.6)	993 (8.8)	1,222 (9.0)	1,783 (9.4)	2,305 (9.2)	2,123 (7.9)	3,523 (10.0)	2,251 (7.1)	2,508
April	773 (7.6)	786 (8.3)	979 (8.6)	1,230 (9.0)	1,508 (7.9)	1,682 (6.7)	2,185 (8.1)	3,391 (9.6)	2,370 (7.5)	2,892
May	804 (7.9)	834 (8.8)	959 (8.5)	1,166 (8.6)	1,741 (9.2)	2,361 (9.4)	2,214 (8.2)	3,246 (9.2)	2,002 (6.3)	2,593
June	866 (8.5)	953 (10.1)	1,029 (9.1)	1,388 (10.2)	1,724 (9.1)	2,691 (10.8)	2,435 (9.0)	3,507 (9.9)	2,793 (8.8)	

Notes: 1. Figures in parentheses are percentage to annual import payments of the respective years

2. Due to rounding off separate items, totals may show minor differences

\* The total include figures for July to current month

\*\* The data before FY05 is import general merchandise based on Balance of Payments Manual 4 (BPM 4) and onward on Balance of Payments Manual 5 (BPM 5).

Table 5: Annual, Quarterly &amp; Monthly Import of Services

(Million US\$)

Period	FY01	FY02	FY03	FY04	FY05	FY06	FY07	FY08	FY09	FY10
Annual	2,333	2,194	2,714	3,961	6,612	8,199	8,310	10,046	7,488	6,176*
Growth (%)	8.0	-6.0	23.7	45.9	66.9	24.0	1.4	20.9	-25.5	
<b>Quarter-wise</b>										
Quarter-I	577 (24.7)	586 (26.7)	579 (21.3)	799 (20.2)	1,449 (21.9)	1,953 (23.8)	2,039 (24.5)	2,194 (21.8)	2,392 (31.9)	1,556
Quarter-II	564 (24.2)	531 (24.2)	586 (21.6)	945 (23.9)	1,669 (25.2)	2,061 (25.1)	2,193 (26.4)	2,548 (25.4)	2,021 (27.0)	1,852
Quarter-III	634 (27.2)	552 (25.2)	649 (23.9)	1,097 (27.7)	1,764 (26.7)	2,061 (25.1)	2,014 (24.2)	2,569 (25.6)	1,390 (18.6)	1603
Quarter-IV	558 (23.9)	525 (23.9)	900 (33.2)	1,120 (28.3)	1,730 (26.2)	2,124 (25.9)	2,064 (24.8)	2,735 (27.2)	1,685 (22.5)	
<b>Month-wise</b>										
July	182 (7.8)	178 (8.1)	181 (6.7)	305 (7.7)	432 (6.5)	573 (7.0)	735 (8.8)	755 (7.5)	743 (9.9)	566
August	183 (7.8)	189 (8.6)	184 (6.8)	207 (5.2)	473 (7.2)	735 (9.0)	619 (7.4)	757 (7.5)	816 (10.9)	477
September	212 (9.1)	219 (10.0)	214 (7.9)	287 (7.2)	544 (8.2)	645 (7.9)	685 (8.2)	682 (6.8)	833 (11.1)	513
October	195 (8.4)	190 (8.7)	189 (7.0)	327 (8.3)	525 (7.9)	626 (7.6)	645 (7.8)	782 (7.8)	839 (11.2)	681
November	204 (8.7)	180 (8.2)	195 (7.2)	238 (6.0)	489 (7.4)	674 (8.2)	782 (9.4)	963 (9.6)	577 (7.7)	553
December	165 (7.1)	161 (7.3)	202 (7.4)	380 (9.6)	655 (9.9)	761 (9.3)	766 (9.2)	803 (8.0)	605 (8.1)	618
January	230 (9.9)	159 (7.2)	248 (9.1)	378 (9.5)	539 (8.2)	672 (8.2)	683 (8.2)	894 (8.9)	448 (6.0)	491
February	218 (9.3)	166 (7.6)	185 (6.8)	339 (8.6)	561 (8.5)	622 (7.6)	633 (7.6)	751 (7.5)	458 (6.1)	525
March	186 (8.0)	227 (10.3)	216 (8.0)	380 (9.6)	664 (10.0)	767 (9.4)	698 (8.4)	924 (9.2)	484 (6.5)	587
April	190 (8.1)	166 (7.6)	331 (12.2)	379 (9.6)	610 (9.2)	617 (7.5)	680 (8.2)	999 (9.9)	542 (7.2)	602
May	195 (8.4)	147 (6.7)	276 (10.2)	355 (9.0)	582 (8.8)	744 (9.1)	657 (7.9)	797 (7.9)	523 (7.0)	563
June	173 (7.4)	212 (9.7)	293 (10.8)	386 (9.7)	538 (8.1)	763 (9.3)	727 (8.7)	939 (9.3)	620 (8.3)	

Notes: 1. Figures in parentheses are percentage to annual import payments of the respective years

2. Due to rounding off separate items, totals may show minor differences

\* The total include figures for July to current month