

## SUMMARY

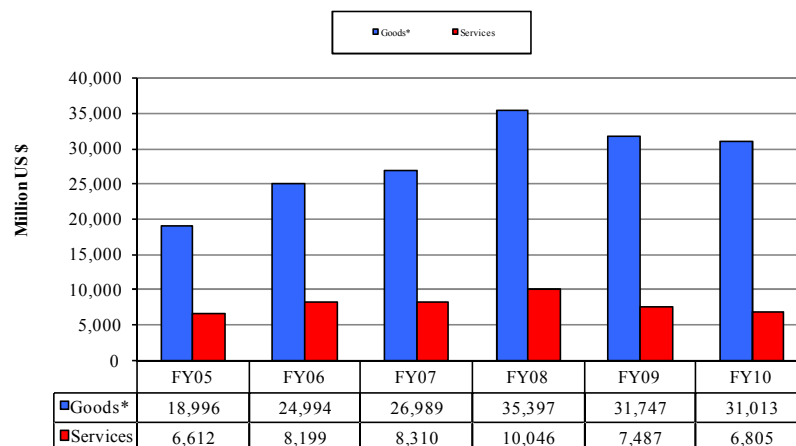
**Table 1(a) : Monthly Import of Goods & Services** (Million US\$)

Items	June	
	2010	2009
I. Import Payments (Banks)	3,079	2,611
II. Freight & Insurance	246	209
III. Other Import unaccounted by Banks	163	373
Unclassified Imports	38	37
Imports NRI, Sale of Duty Free Shops	7	3
Imports under Foreign Economic Assistance	117	323
Land borne Imports with Afghanistan	7	6
PIA & PNSC	2	2
Capital Equipment	0	0
Cost of Imports (Ex. Cos.)	0	0
Refund & Rebate	-8	-6
Import from EPZ	0	9
<b>(A) Import General Merchandise (I-II+III)</b>	<b>2,996</b>	<b>2,775</b>
<b>(B) Other Import under BPM5*</b>	<b>27</b>	<b>18</b>
<b>(C) Import of Goods (A+B)</b>	<b>3,023</b>	<b>2,793</b>
<b>(D) Import of Services</b>	<b>613</b>	<b>620</b>
<b>(E) Import of Goods &amp; Services (C+D)</b>	<b>3,636</b>	<b>3,413</b>

\* See "Introduction" for details:

**Table 1(b) : Key Indicators of Import of Goods and Services** (Million US\$)

June 2010	3,636
May 2010	3,225
% Change during June 2010 over May 2010	12.8
June 2009	3,413
% Change during June 2010 over June 2009	6.5
FY10	37,817
FY09	39,235
% Change during FY10 over FY09	-3.6
Monthly average during FY10	3,151
Monthly average during FY09	3,270

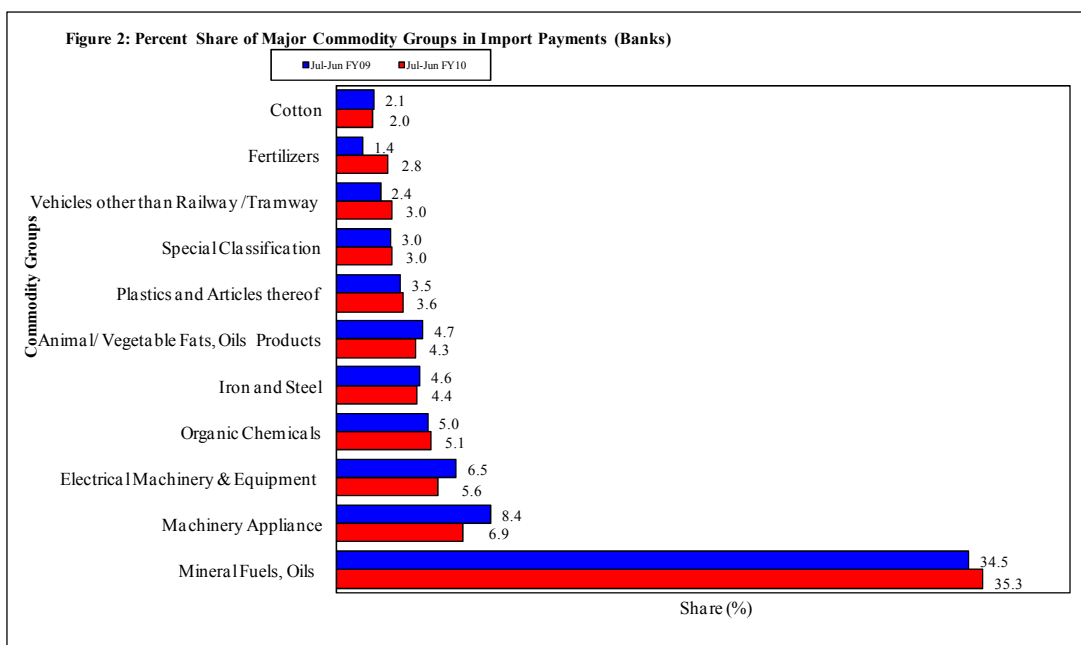
**Figure 1. Import During Jul-Jun**

\*The data is import of goods based on Balance of Payments Manual 5 (BPM 5).

Table 2: Import Payments by Major Groups of Goods &amp; Services

(Amount in Million)

Goods/ Services	June			July-June		% Change
	2010	2010	2009	2009-10	2008-09	
	Pak Rs.	US \$				
Goods						
I. Total Import Payments (Banks)	262,616	3,079	2,611	31,188	31,213	-0.1
Mineral Fuels, Oils and Their Distillation Product	100,075	1,173	859	10,998	10,763	2.2
Nuclear Reactors, Boilers, Machinery and Appliance	20,153	236	201	2,140	2,620	-18.3
Electrical Machinery & Equipment and Parts thereof	13,533	159	170	1,735	2,044	-15.1
Organic Chemicals	11,380	133	141	1,603	1,557	3.0
Iron and Steel	9,022	106	111	1,378	1,428	-3.5
Animal or Vegetable Fats, Oils & Cleavage Products	10,239	120	98	1,336	1,477	-9.6
Plastics and Articles thereof	8,495	100	79	1,127	1,091	3.3
Special Classification Provisions	8,423	99	214	948	924	2.6
Vehicles other than Railway /Tramway Rolling Stock	9,667	113	48	944	751	25.6
Fertilizers	6,238	73	32	868	451	92.7
Cotton	5,490	64	78	622	646	-3.7
Oil Seeds and Oleaginous Fruit	4,355	51	33	543	368	47.5
Miscellaneous Chemical Products	3,634	43	42	505	404	25.0
Man-Made Staple Fibers	4,231	50	30	392	316	24.2
Ships, Boats and Floating Structures	1,330	16	33	388	230	68.4
Optical, Photographic, Measuring and Medical Inst.	2,050	24	38	362	407	-11.0
Man-Made Filaments	3,191	37	20	351	266	32.2
Organic or Inorganic Compounds of Precious Metals	2,621	31	34	341	569	-40.2
All Others	38,490	451	349	4,607	4,901	-6.0
II. Freight & Insurance	21,009	246	209	2,495	2,497	-0.1
III. Other Import Unaccounted by Banks	13,887	163	373	2,070	2,694	-23.2
(A) Import General Merchandise (I-II+III)	255,493	2,996	2,775	30,763	31,410	-2.1
(B) Other Import under BPM5*	2,328	27	18	250	337	-26.0
(C) Import of Goods (A+B)	257,822	3,023	2,793	31,013	31,747	-2.3
Services						
Transportation	29,109	342	309	3,456	3,633	-4.9
Travel	5,197	61	44	879	1,002	-12.3
Communication Services	1,695	20	18	159	144	10.2
Construction Services	56	1	8	29	70	-59.1
Insurance Services	840	10	8	146	133	9.8
Financial Services	776	9	8	95	166	-43.0
Computer & Information Services	1,726	20	13	168	122	37.8
Royalties & License fees	700	8	6	111	93	19.2
Other Business Services	8,512	100	95	1,082	1,648	-34.3
Personal, cultural & recreational Services	10	0	2	19	3	--
Government Services	3,557	42	109	662	473	40.0
(D) Total Import of Services	52,177	613	620	6,805	7,487	-9.1
Total Import of Goods & Services (C+D)	309,998	3,636	3,413	37,817	39,235	-3.6



Note: - The share is based on the share of commodities in Import Payments through Banks

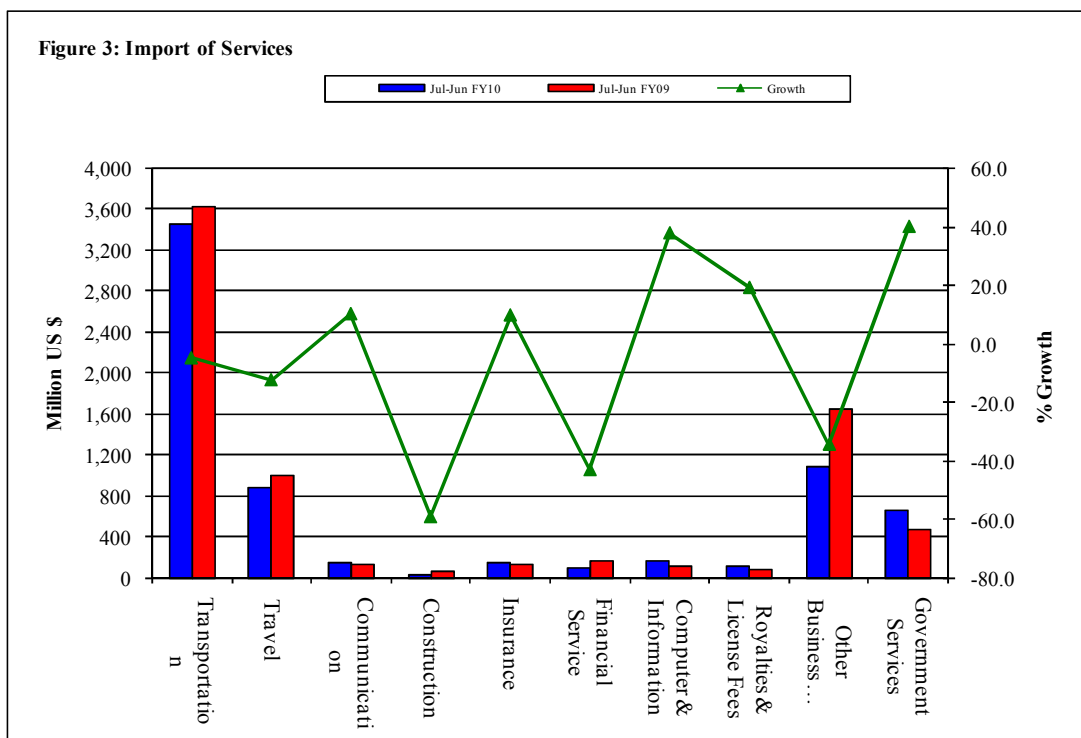
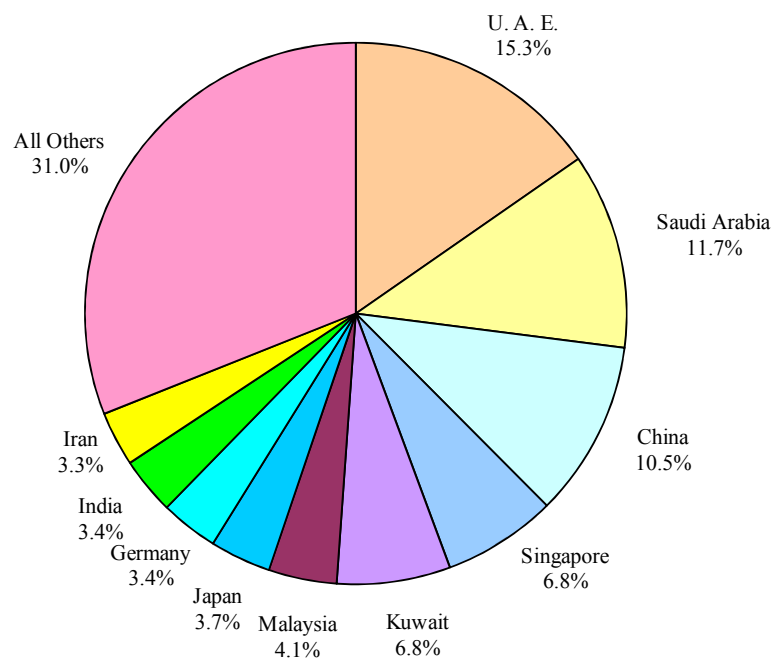


Table 3: Import of Goods &amp; Services by Major Countries

(Amount in Million)

Country	June			July-June		% Change
	2010	2010	2009	2009-10	2008-09	
	Pak Rs.	US \$				
Goods						
I. Total Import Payments (Banks)	262,616	3,079	2,611	31,188	31,213	-0.1
U. A. E.	39,904	468	343	4,782	4,400	8.7
Saudi Arabia	31,187	366	298	3,645	3,545	2.8
China	31,949	375	268	3,284	2,708	21.2
Singapore	17,400	204	175	2,124	1,571	35.2
Kuwait	20,320	238	145	2,111	2,244	-5.9
Malaysia	10,157	119	95	1,271	1,295	-1.8
Japan	10,604	124	74	1,139	1,069	6.5
Germany	7,052	83	58	1,075	1,072	0.3
India	8,113	95	77	1,061	1,033	2.8
Iran	6,246	73	81	1,017	507	100.6
Switzerland	7,217	85	79	966	1,005	-3.9
U. S. A.	6,441	76	170	934	1,160	-19.5
U. K.	4,027	47	64	706	801	-11.9
South Korea	4,851	57	39	537	634	-15.3
Thailand	5,901	69	28	399	409	-2.4
All Others	51,249	601	618	6,138	7,760	-20.9
II. Freight & Insurance	21,009	246	209	2,495	2,497	-0.1
III. Other Import Unaccounted by Banks	13,887	163	373	2,070	2,694	-23.2
(A) Import General Merchandise (I-II+III)	255,493	2,996	2,775	30,763	31,410	-2.1
(B) Other Import under BPM5*	2,328	27	18	250	337	-26.0
(C) Import of Goods (A+B)	257,822	3,023	2,793	31,013	31,747	-2.3
Services						
U. S. A.	6,390	75	117	885	919	-3.7
U. A. E.	6,018	71	58	744	658	13.1
Saudi Arabia	4,329	51	42	498	407	22.2
China	3,967	47	47	453	608	-25.5
U. K.	2,946	35	34	443	605	-26.8
Singapore	2,167	25	21	279	236	18.2
Germany	1,136	13	16	190	183	4.0
Kuwait	1,709	20	13	185	196	-5.6
Japan	1,084	13	10	149	158	-5.4
Malaysia	944	11	10	131	126	4.2
Switzerland	1,013	12	9	113	111	1.6
France	774	9	6	98	142	-30.8
Thailand	989	12	7	95	88	7.8
India	686	8	6	90	87	3.5
Iran	504	6	7	83	42	100.2
All Others	17,521	206	215	2,367	2,921	-19.0
(D) Total Import of Services	52,177	613	620	6,805	7,487	-9.1
Total Import of Goods & Services (C+D)	309,998	3,636	3,413	37,817	39,235	-3.6

**Figure 4: % Share of Major Countries in Import Payments (Banks) During Jul-Jun FY10**



Note: % Share is based on Import Payments through Banks

**Figure 5: % Share of Major Countries in Import of Services During Jul-Jun FY10**

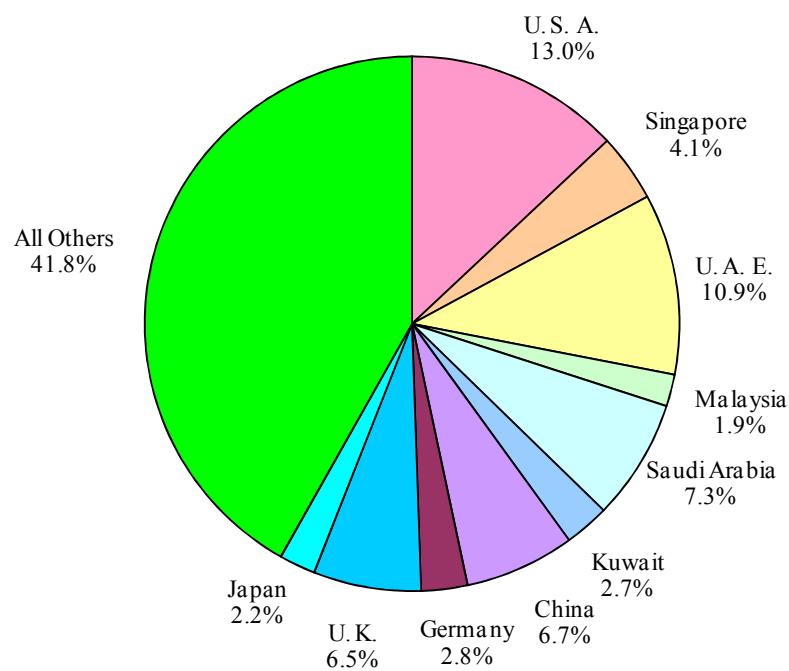


Figure 6: Annual Import of Goods &amp; Services from FY01 to FY10

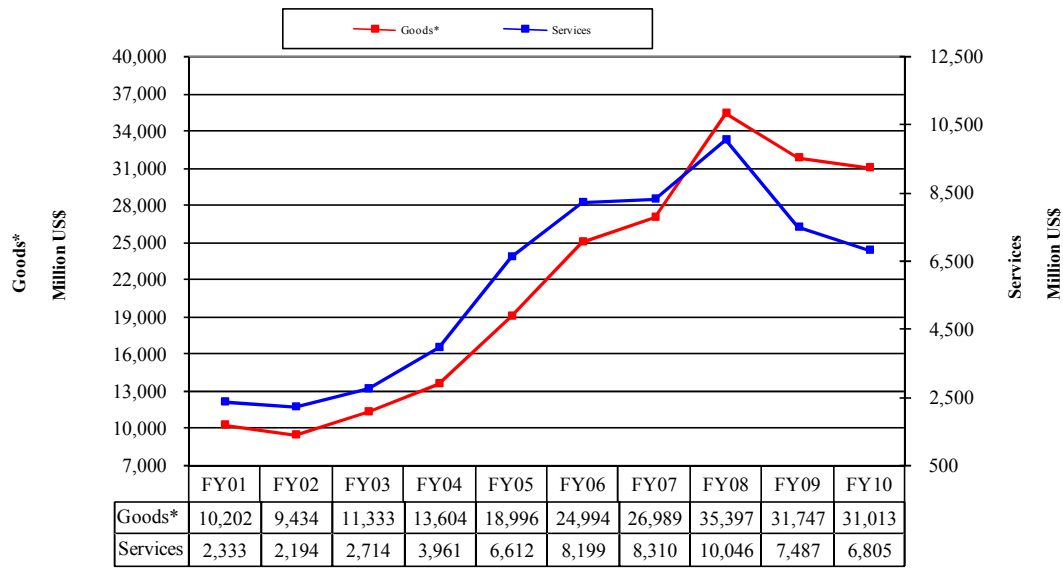


Figure 7: Monthly Imports of Goods &amp; Services



\* The data before FY05 is import general merchandise based on Balance of Payments Manual 4 (BPM 4) and onward on Balance of Payments Manual 5 (BPM 5).

Table 4: Annual, Quarterly &amp; Monthly Import of Goods\*

(Million US\$)

Period	FY01	FY02	FY03	FY04	FY05	FY06	FY07	FY08	FY09	FY10
Annual	10,202	9,434	11,333	13,604	18,996	24,994	26,989	35,397	31,747	31,013
Growth (%)	6.2	-7.5	20.1	20.0	39.6	31.6	8.0	31.2	-10.3	-2.3
<b>Quarter-wise</b>										
Quarter-I	2,703 (26.5)	2,412 (25.6)	2,769 (24.4)	3,014 (22.2)	4,175 (22.0)	5,925 (23.7)	6,933 (25.7)	6,940 (19.6)	10,230 (32.2)	7,429 (24.0)
Quarter-II	2,386 (23.4)	2,216 (23.5)	2,853 (25.2)	3,204 (23.6)	5,047 (26.6)	6,074 (24.3)	6,768 (25.1)	8,548 (24.1)	8,077 (25.4)	7,655 (24.7)
Quarter-III	2,670 (26.2)	2,233 (23.7)	2,744 (24.2)	3,602 (26.5)	4,801 (25.3)	6,261 (25.1)	6,454 (23.9)	9,765 (27.6)	6,275 (19.8)	7,367 (23.8)
Quarter-IV	2,443 (23.9)	2,573 (27.3)	2,967 (26.2)	3,784 (27.8)	4,973 (26.2)	6,734 (26.9)	6,834 (25.3)	10,144 (28.7)	7,165 (22.6)	8,561 (27.6)
July	867 (8.5)	778 (8.2)	943 (8.3)	1,020 (7.5)	1,440 (7.6)	1,772 (7.1)	2,418 (9.0)	2,411 (6.8)	3,373 (10.6)	2,811 (9.1)
August	918 (9.0)	850 (9.0)	974 (8.6)	930 (6.8)	1,311 (6.9)	2,087 (8.4)	2,308 (8.6)	2,259 (6.4)	3,162 (10.0)	2,171 (7.0)
September	918 (9.0)	784 (8.3)	852 (7.5)	1,064 (7.8)	1,424 (7.5)	2,066 (8.3)	2,207 (8.2)	2,269 (6.4)	3,694 (11.6)	2,447 (7.9)
October	816 (8.0)	757 (8.0)	899 (7.9)	1,057 (7.8)	1,616 (8.5)	2,055 (8.2)	2,205 (8.2)	2,604 (7.4)	3,243 (10.2)	2,748 (8.9)
November	901 (8.8)	735 (7.8)	920 (8.1)	876 (6.4)	1,745 (9.2)	2,059 (8.2)	2,161 (8.0)	2,963 (8.4)	2,233 (7.0)	2,191 (7.1)
December	669 (6.6)	724 (7.7)	1,034 (9.1)	1,271 (9.3)	1,686 (8.9)	1,960 (7.8)	2,402 (8.9)	2,980 (8.4)	2,601 (8.2)	2,717 (8.8)
January	1,015 (9.9)	796 (8.4)	924 (8.2)	1,168 (8.6)	1,427 (7.5)	2,070 (8.3)	2,105 (7.8)	3,329 (9.4)	2,140 (6.7)	2,526 (8.1)
February	770 (7.5)	721 (7.6)	827 (7.3)	1,212 (8.9)	1,591 (8.4)	1,886 (7.5)	2,226 (8.2)	2,913 (8.2)	1,884 (5.9)	2,333 (7.5)
March	885 (8.7)	716 (7.6)	993 (8.8)	1,222 (9.0)	1,783 (9.4)	2,305 (9.2)	2,123 (7.9)	3,523 (10.0)	2,251 (7.1)	2,508 (8.1)
April	773 (7.6)	786 (8.3)	979 (8.6)	1,230 (9.0)	1,508 (7.9)	1,682 (6.7)	2,185 (8.1)	3,391 (9.6)	2,370 (7.5)	2,892 (9.3)
May	804 (7.9)	834 (8.8)	959 (8.5)	1,166 (8.6)	1,741 (9.2)	2,361 (9.4)	2,214 (8.2)	3,246 (9.2)	2,002 (6.3)	2,646 (8.5)
June	866 (8.5)	953 (10.1)	1,029 (9.1)	1,388 (10.2)	1,724 (9.1)	2,691 (10.8)	2,435 (9.0)	3,507 (9.9)	2,793 (8.8)	3,023 (9.7)

Notes: 1. Figures in parentheses are percentage to annual import payments of the respective years

2. Due to rounding off separate items, totals may show minor differences

\* The data before FY05 is import general merchandise based on Balance of Payments Manual 4 (BPM 4) and onward on Balance of Payments Manual 5 (BPM 5).

**Table 5: Annual, Quarterly & Monthly Import of Services**

(Million US\$)

Period	FY01	FY02	FY03	FY04	FY05	FY06	FY07	FY08	FY09	FY10
Annual	2,333	2,194	2,714	3,961	6,612	8,199	8,310	10,046	7,487	6,805
Growth (%)	8.0	-6.0	23.7	45.9	66.9	24.0	1.4	20.9	-25.5	-9.1
<b><u>Quarter-wise</u></b>										
Quarter-I	577 (24.7)	586 (26.7)	579 (21.3)	799 (20.2)	1,449 (21.9)	1,953 (23.8)	2,039 (24.5)	2,194 (21.8)	2,392 (31.9)	1,556 (22.9)
Quarter-II	564 (24.2)	531 (24.2)	586 (21.6)	945 (23.9)	1,669 (25.2)	2,061 (25.1)	2,193 (26.4)	2,548 (25.4)	2,021 (27.0)	1,852 (27.2)
Quarter-III	634 (27.2)	552 (25.2)	649 (23.9)	1,097 (27.7)	1,764 (26.7)	2,061 (25.1)	2,014 (24.2)	2,569 (25.6)	1,389 (18.6)	1,603 (23.6)
Quarter-IV	558 (23.9)	525 (23.9)	900 (33.2)	1,120 (28.3)	1,730 (26.2)	2,124 (25.9)	2,064 (24.8)	2,735 (27.2)	1,685 (22.5)	1,794 (26.4)
<b><u>Month-wise</u></b>										
July	182 (7.8)	178 (8.1)	181 (6.7)	305 (7.7)	432 (6.5)	573 (7.0)	735 (8.8)	755 (7.5)	743 (9.9)	566 (8.3)
August	183 (7.8)	189 (8.6)	184 (6.8)	207 (5.2)	473 (7.2)	735 (9.0)	619 (7.4)	757 (7.5)	816 (10.9)	477 (7.0)
September	212 (9.1)	219 (10.0)	214 (7.9)	287 (7.2)	544 (8.2)	645 (7.9)	685 (8.2)	682 (6.8)	833 (11.1)	513 (7.5)
October	195 (8.4)	190 (8.7)	189 (7.0)	327 (8.3)	525 (7.9)	626 (7.6)	645 (7.8)	782 (7.8)	839 (11.2)	681 (10.0)
November	204 (8.7)	180 (8.2)	195 (7.2)	238 (6.0)	489 (7.4)	674 (8.2)	782 (9.4)	963 (9.6)	577 (7.7)	553 (8.1)
December	165 (7.1)	161 (7.3)	202 (7.4)	380 (9.6)	655 (9.9)	761 (9.3)	766 (9.2)	803 (8.0)	605 (8.1)	618 (9.1)
January	230 (9.9)	159 (7.2)	248 (9.1)	378 (9.5)	539 (8.2)	672 (8.2)	683 (8.2)	894 (8.9)	448 (6.0)	491 (7.2)
February	218 (9.3)	166 (7.6)	185 (6.8)	339 (8.6)	561 (8.5)	622 (7.6)	633 (7.6)	751 (7.5)	458 (6.1)	525 (7.7)
March	186 (8.0)	227 (10.3)	216 (8.0)	380 (9.6)	664 (10.0)	767 (9.4)	698 (8.4)	924 (9.2)	483 (6.5)	587 (8.6)
April	190 (8.1)	166 (7.6)	331 (12.2)	379 (9.6)	610 (9.2)	617 (7.5)	680 (8.2)	999 (9.9)	542 (7.2)	602 (8.8)
May	195 (8.4)	147 (6.7)	276 (10.2)	355 (9.0)	582 (8.8)	744 (9.1)	657 (7.9)	797 (7.9)	523 (7.0)	579 (8.5)
June	173 (7.4)	212 (9.7)	293 (10.8)	386 (9.7)	538 (8.1)	763 (9.3)	727 (8.7)	939 (9.3)	620 (8.3)	613 (9.0)

Notes: 1. Figures in parentheses are percentage to annual import payments of the respective years

2. Due to rounding off separate items, totals may show minor differences