

SUMMARY

Table 1(a) : Monthly Import of Goods & Services

(Million US\$)

| Items | July | |
|--|--------------|--------------|
| | 2010 | 2009 |
| I. Import Payments (Banks) | 2,917 | 2,542 |
| II. Freight & Insurance | 233 | 203 |
| III. Other Import unaccounted by Banks | 206 | 449 |
| Unclassified Imports | 149 | 339 |
| Imports NRI, Sale of Duty Free Shops | 7 | 3 |
| Imports under Foreign Economic Assistance | 48 | 104 |
| Land borne Imports with Afghanistan | 7 | 5 |
| PIA & PNSC | 2 | 3 |
| Capital Equipment | 0 | 0 |
| Cost of Imports (Ex. Cos.) | 0 | 0 |
| Refund & Rebate | -8 | -5 |
| Import from EPZ | 0 | 0 |
| (A) Import General Merchandise (I-II+III) | 2,889 | 2,788 |
| (B) Other Import under BPM5* | 25 | 23 |
| (C) Import of Goods (A+B) | 2,914 | 2,811 |
| (D) Import of Services | 556 | 566 |
| (E) Import of Goods & Services (C+D) | 3,470 | 3,377 |

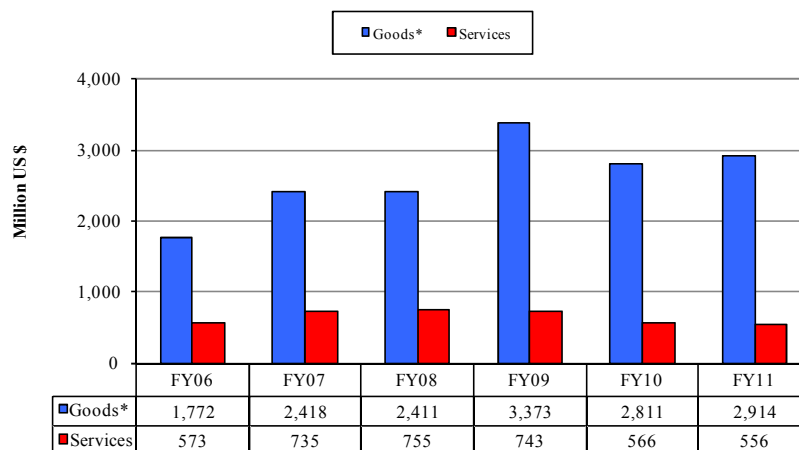
* See "Introduction" for details:

Table 1(b) : Key Indicators of Import of Goods and Services

(Million US\$)

| | |
|--|--------|
| July 2010 | 3,470 |
| June 2010 | 3,678 |
| % Change during July 2010 over June 2010 | -5.6 |
| July 2009 | 3,377 |
| % Change during July 2010 over July 2009 | 2.8 |
| FY10 | 37,880 |
| FY09 | 39,234 |
| % Change during FY10 over FY09 | -3.5 |
| Monthly average during FY10 | 3,157 |
| Monthly average during FY09 | 3,270 |

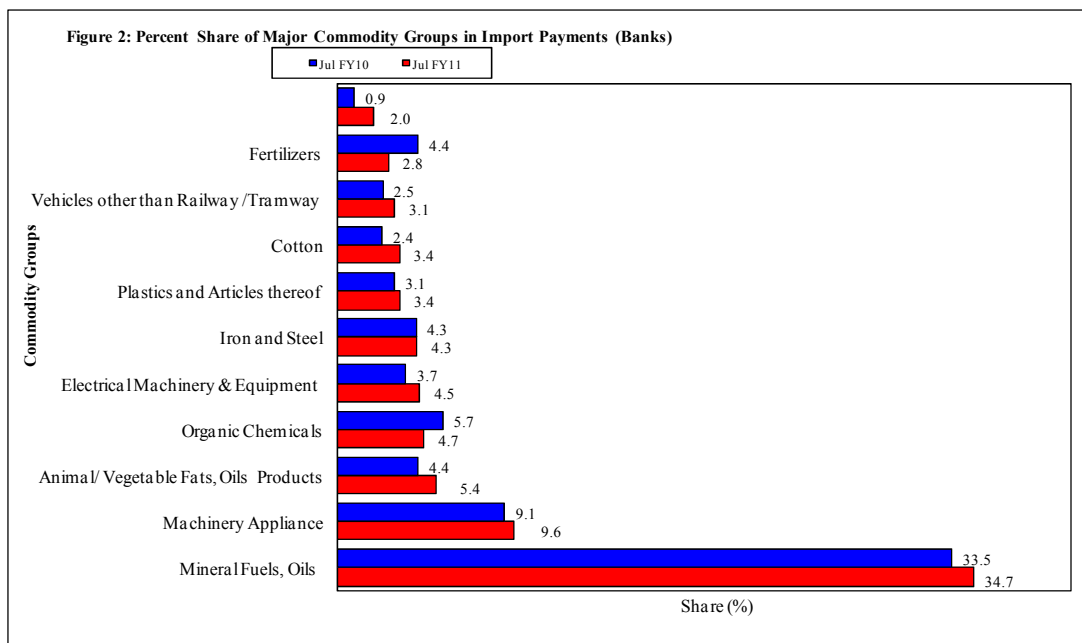
Figure 1. Import During Jul



*The data is import of goods based on Balance of Payments Manual 5 (BPM 5).

Table 2: Import Payments by Major Groups of Goods & Services (Amount in Million)

| Goods/ Services | July | | | % Change |
|--|----------------|--------------|--------------|-------------|
| | 2010 | 2010 | 2009 | |
| | Pak Rs. | US \$ | | |
| Goods | | | | |
| I. Total Import Payments (Banks) | 249,409 | 2,917 | 2,542 | 14.8 |
| Mineral Fuels, Oils and Their Distillation Product | 86,521 | 1,012 | 851 | 18.8 |
| Nuclear Reactors, Boilers, Machinery and Appliance | 24,058 | 281 | 232 | 21.5 |
| Animal or Vegetable Fats, Oils & Cleavage Products | 13,491 | 158 | 112 | 41.1 |
| Organic Chemicals | 11,782 | 138 | 146 | -5.4 |
| Electrical Machinery & Equipment and Parts thereof | 11,233 | 131 | 95 | 38.0 |
| Iron and Steel | 10,846 | 127 | 109 | 16.3 |
| Plastics and Articles thereof | 8,480 | 99 | 79 | 25.8 |
| Cotton | 8,416 | 98 | 62 | 58.2 |
| Vehicles other than Railway /Tramway Rolling Stock | 7,833 | 92 | 63 | 45.4 |
| Fertilizers | 6,960 | 81 | 112 | -27.2 |
| Sugars and Sugar Confectionery | 4,961 | 58 | 23 | 148.6 |
| Oil Seeds and Oleaginous Fruit | 4,299 | 50 | 39 | 29.1 |
| Miscellaneous Chemical Products | 3,467 | 41 | 46 | -12.6 |
| Man-Made Staple Fibers | 3,458 | 40 | 25 | 59.2 |
| Organic or Inorganic Compounds of Precious Metals | 3,438 | 40 | 28 | 43.8 |
| Special Classification Provisions | 2,914 | 34 | 61 | -44.5 |
| Man-Made Filaments | 2,760 | 32 | 27 | 21.5 |
| Coffee, Tea, Mate and Spices | 2,614 | 31 | 24 | 25.4 |
| All Others | 31,877 | 373 | 407 | -8.4 |
| II. Freight & Insurance | 19,953 | 233 | 203 | 14.8 |
| III. Other Import Unaccounted by Banks | 17,575 | 206 | 449 | -54.2 |
| (A) Import General Merchandise (I-II+III) | 247,031 | 2,889 | 2,788 | 3.6 |
| (B) Other Import under BPM5* | 2,138 | 25 | 23 | 7.3 |
| (C) Import of Goods (A+B) | 249,169 | 2,914 | 2,811 | 3.7 |
| Services | | | | |
| Transportation | 28,117 | 329 | 313 | 5.0 |
| Travel | 5,461 | 64 | 51 | 25.4 |
| Communication Services | 1,115 | 13 | 4 | 223.0 |
| Construction Services | 70 | 1 | 3 | -70.9 |
| Insurance Services | 909 | 11 | 13 | -16.8 |
| Financial Services | 516 | 6 | 6 | -6.9 |
| Computer & Information Services | 953 | 11 | 10 | 8.3 |
| Royalties & License fees | 523 | 6 | 7 | -6.9 |
| Other Business Services | 7,236 | 85 | 108 | -21.3 |
| Personal, cultural & recreational Services | 31 | 0 | 2 | -- |
| Government Services | 2,598 | 30 | 50 | -38.7 |
| (D) Total Import of Services | 47,531 | 556 | 566 | -1.8 |
| Total Import of Goods & Services (C+D) | 296,700 | 3,470 | 3,377 | 2.8 |



Note: - The share is based on the share of commodities in Import Payments through Banks

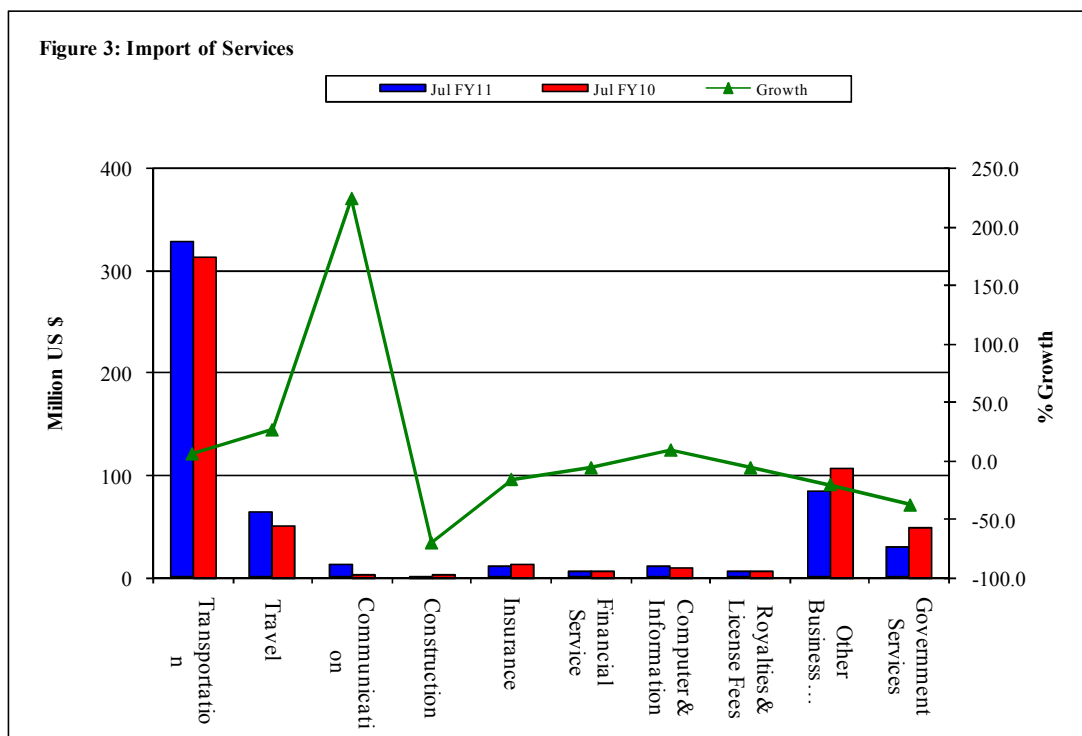
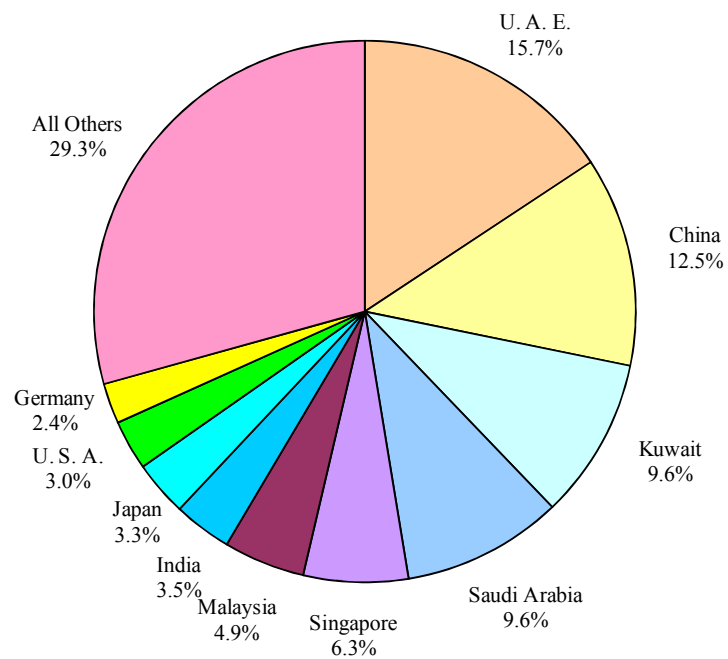


Table 3: Import of Goods & Services by Major Countries

(Amount in Million)

| Country | July | | | % Change |
|---|---------|-------|-------|----------|
| | 2010 | 2010 | 2009 | |
| | Pak Rs. | US \$ | | |
| Goods | | | | |
| I. Total Import Payments (Banks) | 249,409 | 2,917 | 2,542 | 14.8 |
| U. A. E. | 39,156 | 458 | 405 | 13.1 |
| China | 31,210 | 365 | 208 | 75.1 |
| Kuwait | 24,013 | 281 | 126 | 123.1 |
| Saudi Arabia | 23,866 | 279 | 286 | -2.3 |
| Singapore | 15,590 | 182 | 208 | -12.5 |
| Malaysia | 12,114 | 142 | 83 | 70.8 |
| India | 8,688 | 102 | 88 | 15.1 |
| Japan | 8,216 | 96 | 87 | 10.1 |
| U. S. A. | 7,425 | 87 | 101 | -14.4 |
| Germany | 6,017 | 70 | 130 | -46.1 |
| Switzerland | 5,598 | 65 | 88 | -25.2 |
| U. K. | 5,101 | 60 | 61 | -1.8 |
| Bahamas | 4,145 | 48 | 0 | -- |
| Iran | 4,108 | 48 | 92 | -47.7 |
| Hong Kong | 4,100 | 48 | 17 | 188.5 |
| All Others | 50,063 | 586 | 561 | 4.3 |
| II. Freight & Insurance | 19,953 | 233 | 203 | 14.8 |
| III. Other Import Unaccounted by Banks | 17,575 | 206 | 449 | -54.2 |
| (A) Import General Merchandise (I-II+III) | 247,031 | 2,889 | 2,788 | 3.6 |
| (B) Other Import under BPM5* | 2,138 | 25 | 23 | 7.3 |
| (C) Import of Goods (A+B) | 249,169 | 2,914 | 2,811 | 3.7 |
| Services | | | | |
| U. S. A. | 7,514 | 88 | 73 | 19.8 |
| U. A. E. | 4,747 | 56 | 66 | -16.0 |
| Saudi Arabia | 3,906 | 46 | 41 | 10.8 |
| U. K. | 3,578 | 42 | 37 | 12.0 |
| China | 3,141 | 37 | 36 | 1.8 |
| Kuwait | 2,041 | 24 | 11 | 116.5 |
| Singapore | 1,918 | 22 | 25 | -10.2 |
| Malaysia | 1,051 | 12 | 9 | 31.7 |
| Germany | 992 | 12 | 16 | -27.9 |
| France | 827 | 10 | 7 | 29.3 |
| Switzerland | 800 | 9 | 11 | -11.3 |
| Bahrain | 796 | 9 | 2 | 373.6 |
| Thailand | 790 | 9 | 8 | 20.2 |
| Japan | 777 | 9 | 14 | -35.1 |
| India | 721 | 8 | 7 | 13.3 |
| All Others | 13,933 | 163 | 201 | -19.0 |
| (D) Total Import of Services | 47,531 | 556 | 566 | -1.8 |
| Total Import of Goods & Services (C+D) | 296,700 | 3,470 | 3,377 | 2.8 |

Figure 4: % Share of Major Countries in Import Payments (Banks) During Jul FY11



Note: % Share is based on Import Payments through Banks

Figure 5: % Share of Major Countries in Import of Services During Jul FY11

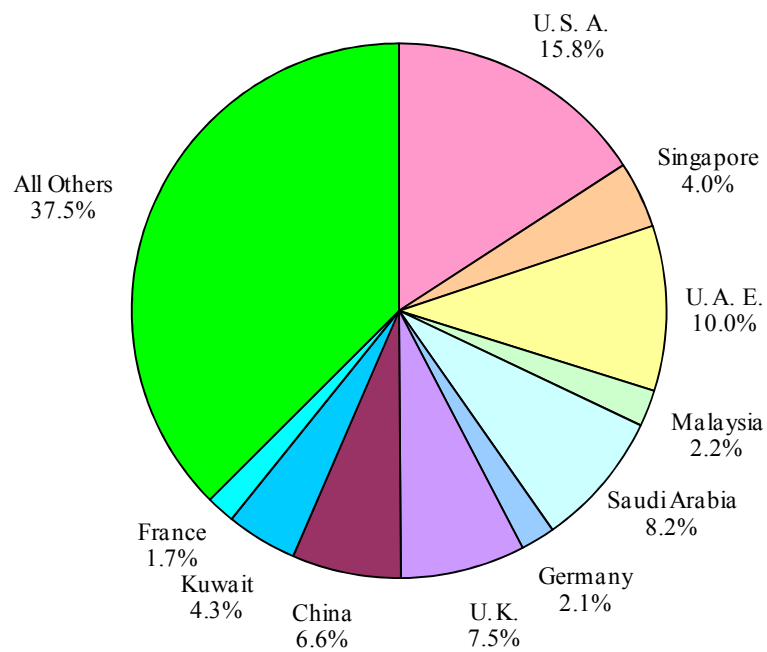


Figure 6: Annual Import of Goods & Services from FY01 to FY10

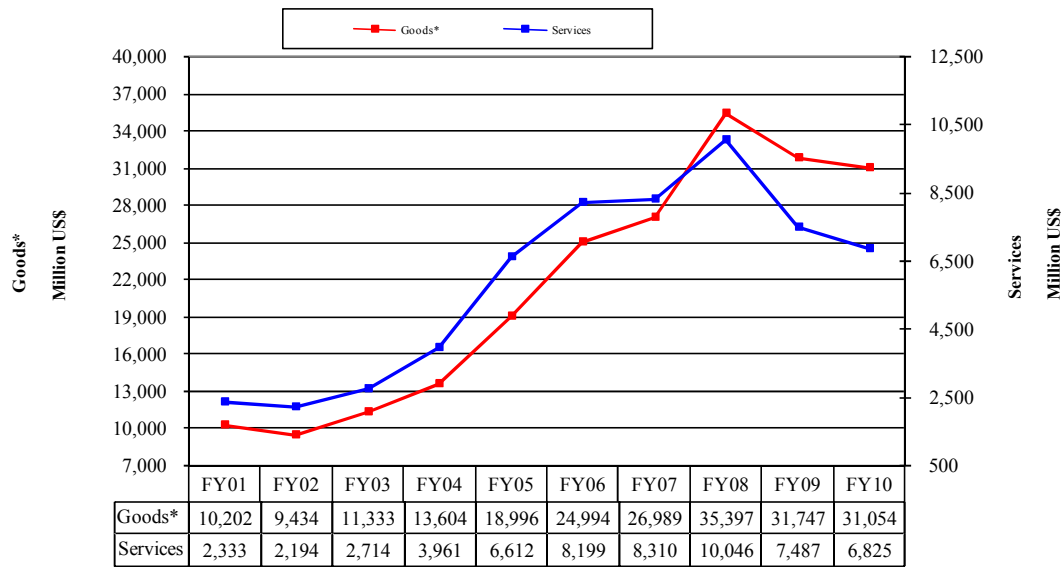
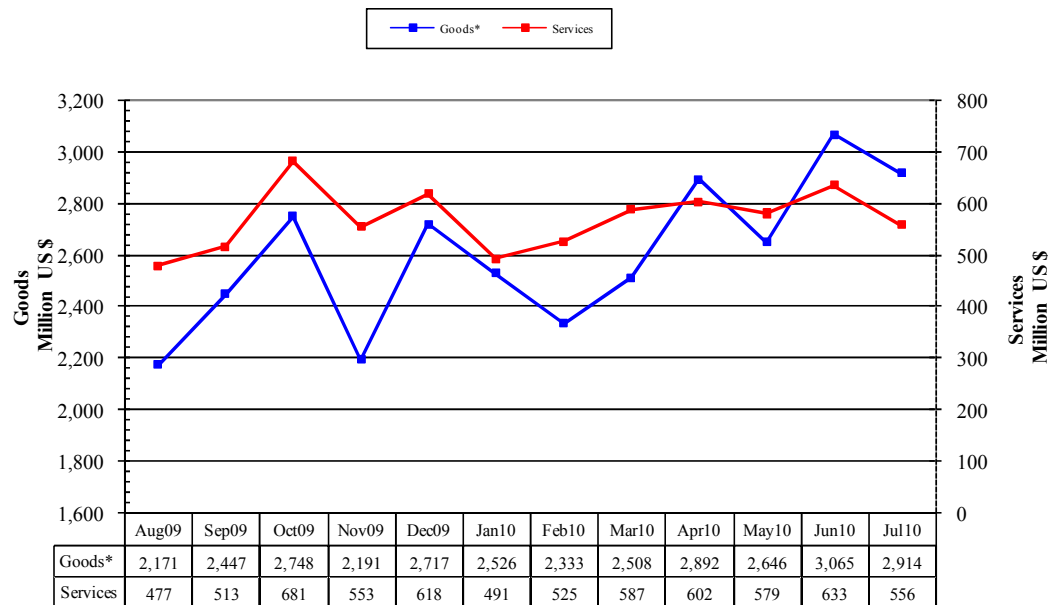


Figure 7: Monthly Imports of Goods & Services



* The data before FY05 is import general merchandise based on Balance of Payments Manual 4 (BPM 4) and onward on Balance of Payments Manual 5 (BPM 5).

Table 4: Annual, Quarterly & Monthly Import of Goods*

(Million US\$)

| Period | FY02 | FY03 | FY04 | FY05 | FY06 | FY07 | FY08 | FY09 | FY10 | FY11 |
|-------------|-----------------|-----------------|-----------------|-----------------|-----------------|-----------------|------------------|------------------|-----------------|-------|
| Annual | 9,434 | 11,333 | 13,604 | 18,996 | 24,994 | 26,989 | 35,397 | 31,747 | 31,054 | |
| Growth (%) | -7.5 | 20.1 | 20.0 | 39.6 | 31.6 | 8.0 | 31.2 | -10.3 | -2.2 | |
| Quarter-I | 2,412 (25.6) | 2,769 (24.4) | 3,014 (22.2) | 4,175 (22.0) | 5,925 (23.7) | 6,933 (25.7) | 6,940 (19.6) | 10,230 (32.2) | 7,429 (23.9) | |
| Quarter-II | 2,216 (23.5) | 2,853 (25.2) | 3,204 (23.6) | 5,047 (26.6) | 6,074 (24.3) | 6,768 (25.1) | 8,548 (24.1) | 8,077 (25.4) | 7,655 (24.7) | |
| Quarter-III | 2,233 (23.7) | 2,744 (24.2) | 3,602 (26.5) | 4,801 (25.3) | 6,261 (25.1) | 6,454 (23.9) | 9,765 (27.6) | 6,275 (19.8) | 7,367 (23.7) | |
| Quarter-IV | 2,573 (27.3) | 2,967 (26.2) | 3,784 (27.8) | 4,973 (26.2) | 6,734 (26.9) | 6,834 (25.3) | 10,144 (28.7) | 7,165 (22.6) | 8,603 (27.7) | |
| July | 778 (8.2) | 943 (8.3) | 1,020 (7.5) | 1,440 (7.6) | 1,772 (7.1) | 2,418 (9.0) | 2,411 (6.8) | 3,373 (10.6) | 2,811 (9.1) | 2,914 |
| August | 850 (9.0) | 974 (8.6) | 930 (6.8) | 1,311 (6.9) | 2,087 (8.4) | 2,308 (8.6) | 2,259 (6.4) | 3,162 (10.0) | 2,171 (7.0) | |
| September | 784 (8.3) | 852 (7.5) | 1,064 (7.8) | 1,424 (7.5) | 2,066 (8.3) | 2,207 (8.2) | 2,269 (6.4) | 3,694 (11.6) | 2,447 (7.9) | |
| October | 757 (8.0) | 899 (7.9) | 1,057 (7.8) | 1,616 (8.5) | 2,055 (8.2) | 2,205 (8.2) | 2,604 (7.4) | 3,243 (10.2) | 2,748 (8.8) | |
| November | 735 (7.8) | 920 (8.1) | 876 (6.4) | 1,745 (9.2) | 2,059 (8.2) | 2,161 (8.0) | 2,963 (8.4) | 2,233 (7.0) | 2,191 (7.1) | |
| December | 724 (7.7) | 1,034 (9.1) | 1,271 (9.3) | 1,686 (8.9) | 1,960 (7.8) | 2,402 (8.9) | 2,980 (8.4) | 2,601 (8.2) | 2,717 (8.7) | |
| January | 796 (8.4) | 924 (8.2) | 1,168 (8.6) | 1,427 (7.5) | 2,070 (8.3) | 2,105 (7.8) | 3,329 (9.4) | 2,140 (6.7) | 2,526 (8.1) | |
| February | 721 (7.6) | 827 (7.3) | 1,212 (8.9) | 1,591 (8.4) | 1,886 (7.5) | 2,226 (8.2) | 2,913 (8.2) | 1,884 (5.9) | 2,333 (7.5) | |
| March | 716 (7.6) | 993 (8.8) | 1,222 (9.0) | 1,783 (9.4) | 2,305 (9.2) | 2,123 (7.9) | 3,523 (10.0) | 2,251 (7.1) | 2,508 (8.1) | |
| April | 786 (8.3) | 979 (8.6) | 1,230 (9.0) | 1,508 (7.9) | 1,682 (6.7) | 2,185 (8.1) | 3,391 (9.6) | 2,370 (7.5) | 2,892 (9.3) | |
| May | 834 (8.8) | 959 (8.5) | 1,166 (8.6) | 1,741 (9.2) | 2,361 (9.4) | 2,214 (8.2) | 3,246 (9.2) | 2,002 (6.3) | 2,646 (8.5) | |
| June | 953 (10.1) | 1,029 (9.1) | 1,388 (10.2) | 1,724 (9.1) | 2,691 (10.8) | 2,435 (9.0) | 3,507 (9.9) | 2,793 (8.8) | 3,065 (9.9) | |

Notes: 1. Figures in parentheses are percentage to annual import payments of the respective years

2. Due to rounding off separate items, totals may show minor differences

* The data before FY05 is import general merchandise based on Balance of Payments Manual 4 (BPM 4) and onward on Balance of Payments Manual 5 (BPM 5).

Table 5: Annual, Quarterly & Monthly Import of Services

(Million US\$)

| Period | FY02 | FY03 | FY04 | FY05 | FY06 | FY07 | FY08 | FY09 | FY10 | FY11 |
|-------------|---------------|---------------|-----------------|-----------------|-----------------|-----------------|-----------------|-----------------|-----------------|------|
| Annual | 2,194 | 2,714 | 3,961 | 6,612 | 8,199 | 8,310 | 10,046 | 7,487 | 6,825 | |
| Growth (%) | -6.0 | 23.7 | 45.9 | 66.9 | 24.0 | 1.4 | 20.9 | -25.5 | -8.8 | |
| Quarter-I | 586 (26.7) | 579 (21.3) | 799 (20.2) | 1,449 (21.9) | 1,953 (23.8) | 2,039 (24.5) | 2,194 (21.8) | 2,392 (31.9) | 1,556 (22.8) | |
| Quarter-II | 531 (24.2) | 586 (21.6) | 945 (23.9) | 1,669 (25.2) | 2,061 (25.1) | 2,193 (26.4) | 2,548 (25.4) | 2,021 (27.0) | 1,852 (27.1) | |
| Quarter-III | 552 (25.2) | 649 (23.9) | 1,097 (27.7) | 1,764 (26.7) | 2,061 (25.1) | 2,014 (24.2) | 2,569 (25.6) | 1,389 (18.6) | 1,603 (23.5) | |
| Quarter-IV | 525 (23.9) | 900 (33.2) | 1,120 (28.3) | 1,730 (26.2) | 2,124 (25.9) | 2,064 (24.8) | 2,735 (27.2) | 1,685 (22.5) | 1,814 (26.6) | |
| July | 178 (8.1) | 181 (6.7) | 305 (7.7) | 432 (6.5) | 573 (7.0) | 735 (8.8) | 755 (7.5) | 743 (9.9) | 566 (8.3) | 556 |
| August | 189 (8.6) | 184 (6.8) | 207 (5.2) | 473 (7.2) | 735 (9.0) | 619 (7.4) | 757 (7.5) | 816 (10.9) | 477 (7.0) | |
| September | 219 (10.0) | 214 (7.9) | 287 (7.2) | 544 (8.2) | 645 (7.9) | 685 (8.2) | 682 (6.8) | 833 (11.1) | 513 (7.5) | |
| October | 190 (8.7) | 189 (7.0) | 327 (8.3) | 525 (7.9) | 626 (7.6) | 645 (7.8) | 782 (7.8) | 839 (11.2) | 681 (10.0) | |
| November | 180 (8.2) | 195 (7.2) | 238 (6.0) | 489 (7.4) | 674 (8.2) | 782 (9.4) | 963 (9.6) | 577 (7.7) | 553 (8.1) | |
| December | 161 (7.3) | 202 (7.4) | 380 (9.6) | 655 (9.9) | 761 (9.3) | 766 (9.2) | 803 (8.0) | 605 (8.1) | 618 (9.1) | |
| January | 159 (7.2) | 248 (9.1) | 378 (9.5) | 539 (8.2) | 672 (8.2) | 683 (8.2) | 894 (8.9) | 448 (6.0) | 491 (7.2) | |
| February | 166 (7.6) | 185 (6.8) | 339 (8.6) | 561 (8.5) | 622 (7.6) | 633 (7.6) | 751 (7.5) | 458 (6.1) | 525 (7.7) | |
| March | 227 (10.3) | 216 (8.0) | 380 (9.6) | 664 (10.0) | 767 (9.4) | 698 (8.4) | 924 (9.2) | 483 (6.5) | 587 (8.6) | |
| April | 166 (7.6) | 331 (12.2) | 379 (9.6) | 610 (9.2) | 617 (7.5) | 680 (8.2) | 999 (9.9) | 542 (7.2) | 602 (8.8) | |
| May | 147 (6.7) | 276 (10.2) | 355 (9.0) | 582 (8.8) | 744 (9.1) | 657 (7.9) | 797 (7.9) | 523 (7.0) | 579 (8.5) | |
| June | 212 (9.7) | 293 (10.8) | 386 (9.7) | 538 (8.1) | 763 (9.3) | 727 (8.7) | 939 (9.3) | 620 (8.3) | 633 (9.3) | |

Notes: 1. Figures in parentheses are percentage to annual import payments of the respective years

2. Due to rounding off separate items, totals may show minor differences