

SUMMARY

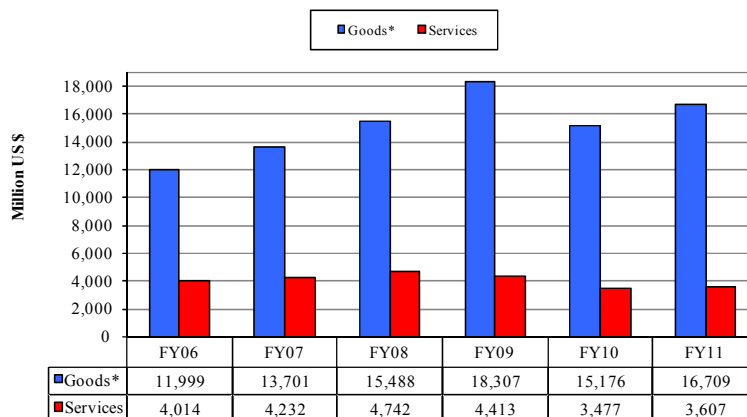
Table 1(a) : Monthly Import of Goods & Services (Million US\$)

Items	December	
	2010	2009
I. Import Payments (Banks)	3,172	2,752
II. Freight & Insurance	254	220
III. Other Import unaccounted by Banks	147	188
Unclassified Imports	124	13
Imports NRI, Sale of Duty Free Shops	3	5
Imports under Foreign Economic Assistance	18	164
Land borne Imports with Afghanistan	10	10
PIA & PNSC	3	4
Capital Equipment	0	0
Cost of Imports (Ex. Cos.)	0	0
Refund & Rebate	-11	-7
Import from EPZ	0	0
(A) Import General Merchandise (I-II+III)	3,065	2,719
(B) Other Import under BPM5*	26	21
(C) Import of Goods (A+B)	3,091	2,741
(D) Import of Services	656	639
(E) Import of Goods & Services (C+D)	3,747	3,380

* See "Introduction" for details:

Table 1(b) : Key Indicators of Import of Goods and Services (Million US\$)

December 2010	3,747
November 2010	3,389
% Change during December 2010 over November 2010	10.6
December 2009	3,380
% Change during December 2010 over December 2009	10.9
July-December 2010-11	20,317
July-December 2009-10	18,653
% Change during July-December 2010-11 over July-December 2009-10	8.9
Monthly average during July-December 2010-11	3,386
Monthly average during July-December 2009-10	3,109
FY10	38,128
FY09	39,234
% Change during FY10 over FY09	-2.8
Monthly average during FY10	3,177
Monthly average during FY09	3,270

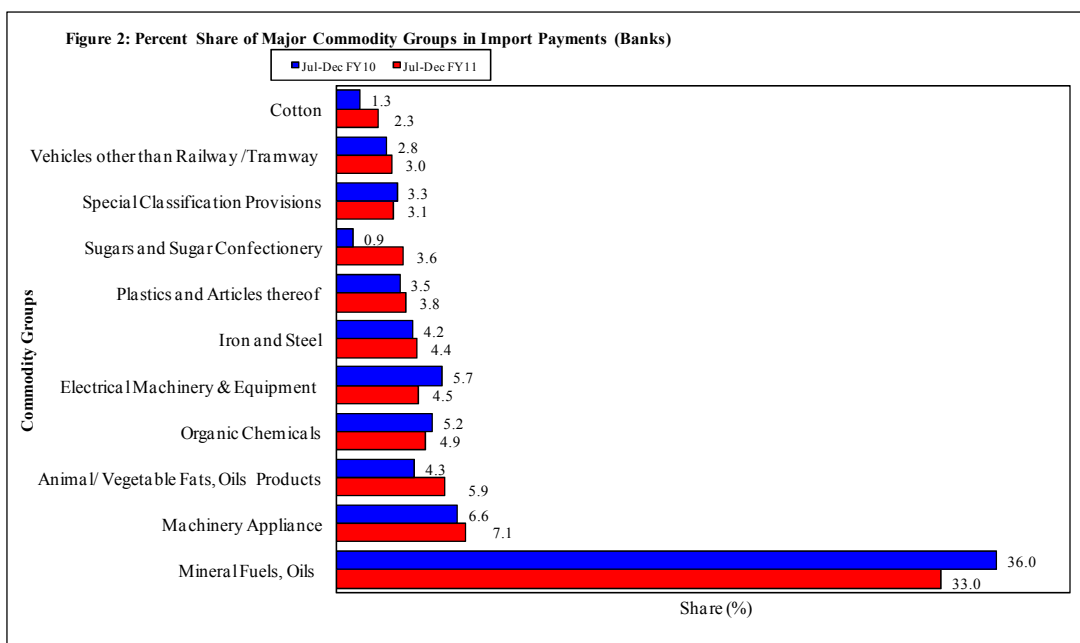
Figure 1. Import During Jul-Dec

*The data is import of goods based on Balance of Payments Manual 5 (BPM 5).

Table 2: Import Payments by Major Groups of Goods & Services

(Amount in Million)

Goods/ Services	December			July-December		% Change
	2010	2010	2009	2010-11	2009-10	
	Pak Rs.	US \$				
Goods						
I. Import Payments (Banks)	271,843	3,172	2,752	17,063	15,072	13.2
Mineral Fuels, Oils and Their Distillation Product	86,096	1,005	941	5,625	5,424	3.7
Nuclear Reactors, Boilers, Machinery and Appliance	17,289	202	160	1,206	996	21.1
Animal or Vegetable Fats, Oils & Cleavage Products	13,720	160	115	1,010	642	57.2
Organic Chemicals	14,603	170	133	831	789	5.4
Electrical Machinery & Equipment and Parts thereof	12,354	144	246	764	866	-11.7
Iron and Steel	8,459	99	112	749	628	19.3
Plastics and Articles thereof	10,474	122	105	643	520	23.5
Sugars and Sugar Confectionery	10,520	123	6	615	137	349.2
Special Classification Provisions	15,529	181	96	533	497	7.2
Vehicles other than Railway /Tramway Rolling Stock	6,848	80	94	511	416	22.9
Cotton	9,860	115	53	385	196	96.3
Oil Seeds and Oleaginous Fruit	8,358	98	21	289	203	42.8
Fertilizers	250	3	101	288	635	-54.7
Edible Vegetables	3,848	45	20	275	132	107.9
Man-Made Staple Fibers	4,046	47	35	258	175	47.1
Ships, Boats and Floating Structures	5,012	58	21	246	91	169.0
Miscellaneous Chemical Products	3,266	38	44	242	254	-4.7
Man-Made Filaments	4,053	47	32	240	151	59.1
All Others	37,257	435	418	2,354	2,320	1.5
II. Freight & Insurance	21,747	254	220	1,365	1,206	13.2
III. Other Import Unaccounted by Banks	12,590	147	188	845	1,177	-28.2
(A) Import General Merchandise (I-II+III)	262,686	3,065	2,719	16,543	15,044	10.0
(B) Other Import under BPM5*	2,211	26	21	167	132	26.1
(C) Import of Goods (A+B)	264,897	3,091	2,741	16,709	15,176	10.1
Services						
Transportation	29,568	345	313	1,903	1,749	8.8
Travel	5,757	67	47	479	433	10.6
Communication Services	1,928	22	23	89	91	-1.5
Construction Services	292	3	3	15	15	3.2
Insurance Services	1,168	14	16	78	82	-5.2
Financial Services	828	10	8	56	49	12.7
Computer & Information Services	1,021	12	19	66	68	-3.4
Royalties & License fees	1,116	13	11	59	46	29.7
Other Business Services	9,442	110	100	536	590	-9.1
Personal, cultural & recreational Services	11	0	2	7	13	-45.2
Government Services	5,116	60	97	319	342	-6.7
(D) Total Import of Services	56,245	656	639	3,607	3,477	3.7
Total Import of Goods & Services (C+D)	321,142	3,747	3,380	20,317	18,653	8.9



Note: - The share is based on the share of commodities in Import Payments through Banks

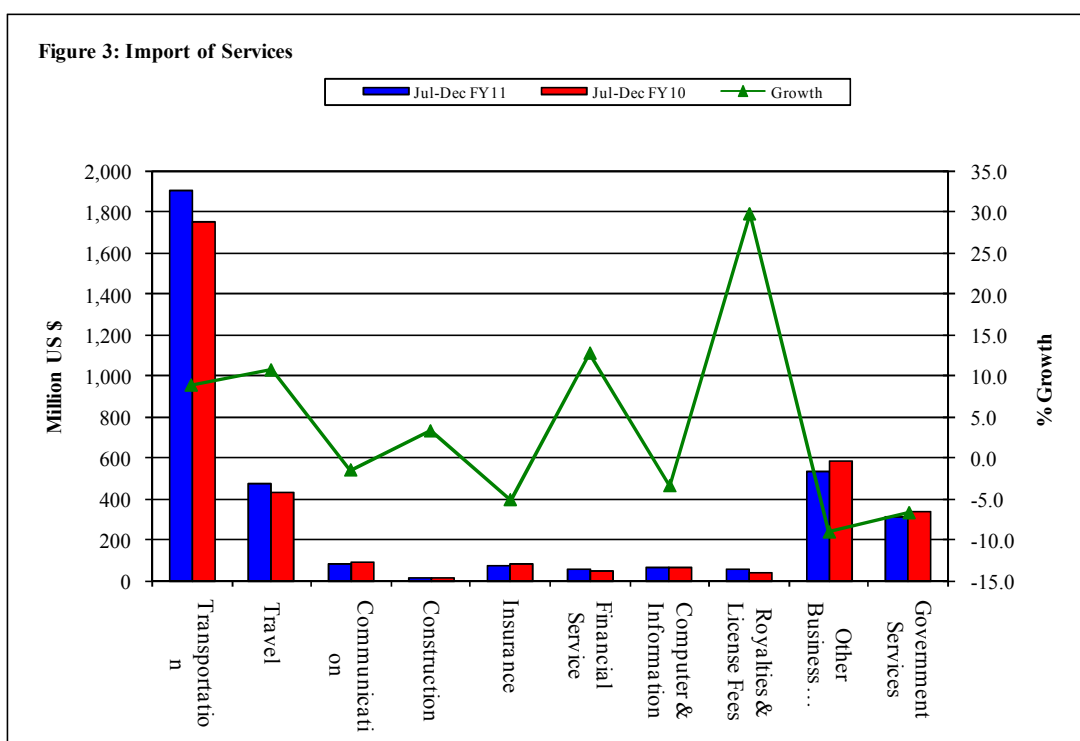
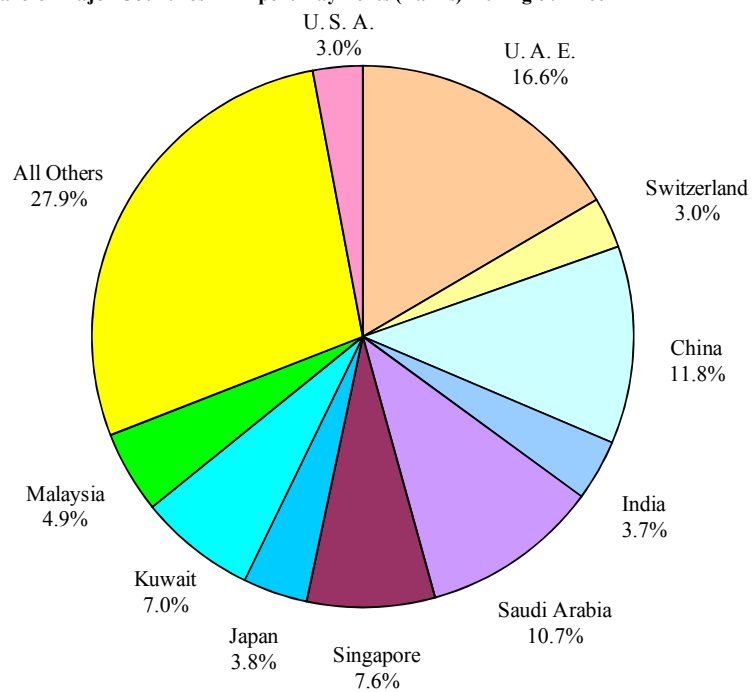


Table 3: Import of Goods & Services by Major Countries

(Amount in Million)

Country	December			July-December		%
	2010	2010	2009	2010-11	2009-10	Change
	Pak Rs.	US \$				
Goods						
I. Import Payments (Banks)	271,843	3,172	2,752	17,063	15,072	13.2
U. A. E.	49,061	572	438	2,827	2,474	14.3
China	32,003	373	330	2,011	1,536	31.0
Saudi Arabia	30,045	351	266	1,818	1,744	4.2
Singapore	17,514	204	129	1,304	928	40.5
Kuwait	15,956	186	182	1,192	974	22.3
Malaysia	11,524	134	108	838	589	42.3
Japan	9,328	109	135	656	577	13.7
India	15,365	179	97	624	434	43.9
Switzerland	5,844	68	110	518	551	-6.0
U. S. A.	8,722	102	75	507	457	10.9
Germany	5,768	67	114	441	582	-24.1
U. K.	4,594	54	47	325	346	-6.2
Thailand	3,504	41	30	256	173	47.6
Hong Kong	3,220	38	32	254	146	73.8
South Korea	3,301	39	42	245	223	10.1
All Others	56,095	654	617	3,248	3,338	-2.7
II. Freight & Insurance	21,747	254	220	1,365	1,206	13.2
III. Other Import Unaccounted by Banks	12,590	147	188	845	1,177	-28.2
(A) Import General Merchandise (I-II+III)	262,686	3,065	2,719	16,543	15,044	10.0
(B) Other Import under BPM5*	2,211	26	21	167	132	26.1
(C) Import of Goods (A+B)	264,897	3,091	2,741	16,709	15,176	10.1
Services						
U. S. A.	8,711	102	89	467	512	-8.8
U. A. E.	7,432	87	93	389	387	0.7
Saudi Arabia	3,637	42	34	279	267	4.6
U. K.	4,142	48	36	263	245	7.0
China	3,719	43	53	243	234	3.7
Singapore	2,256	26	17	155	124	25.4
Kuwait	1,423	17	16	107	86	24.0
Japan	1,311	15	20	87	84	2.8
Malaysia	1,069	12	13	86	62	38.5
Germany	1,256	15	19	79	107	-25.7
Switzerland	909	11	10	71	58	22.2
France	1,427	17	8	54	58	-5.9
India	1,308	15	8	53	36	44.4
Thailand	710	8	7	51	46	11.2
Hongkong	880	10	7	46	32	43.1
All Other	16,053	187	208	1,178	1,139	3.4
(D) Total Import of Services	56,245	656	639	3,607	3,477	3.7
Total Import of Goods & Services (C+D)	321,142	3,747	3,380	20,317	18,653	8.9

Figure 4: % Share of Major Countries in Import Payments (Banks) During Jul-Dec FY11

Note: % Share is based on Import Payments through Banks

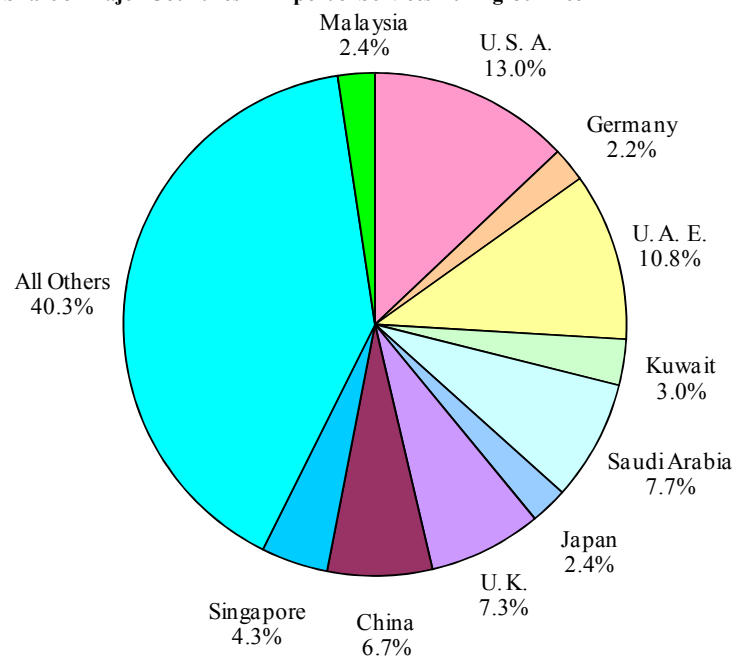
Figure 5: % Share of Major Countries in Import of Services During Jul-Dec FY11

Figure 6: Annual Import of Goods & Services from FY01 to FY10

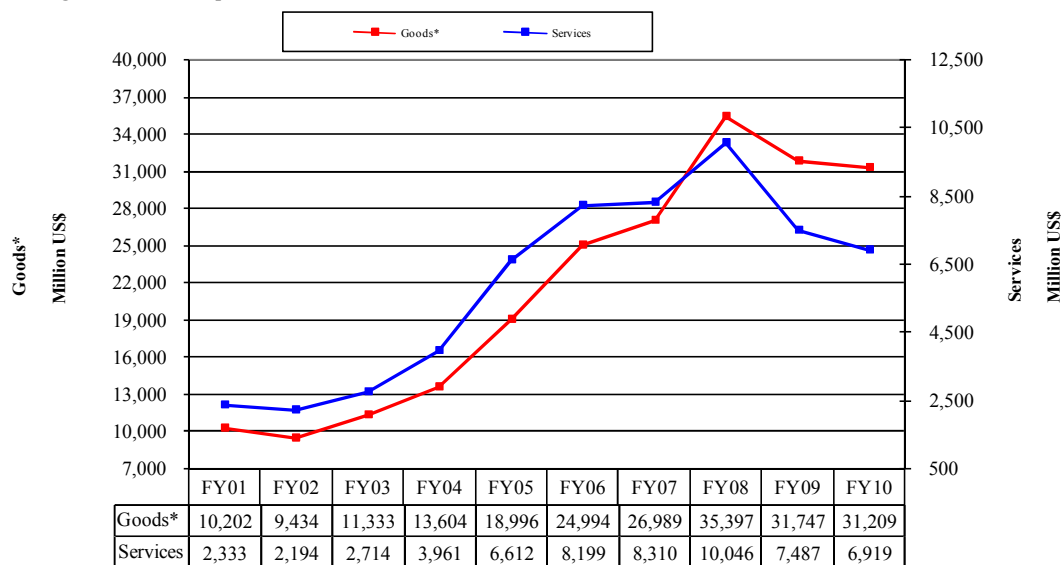
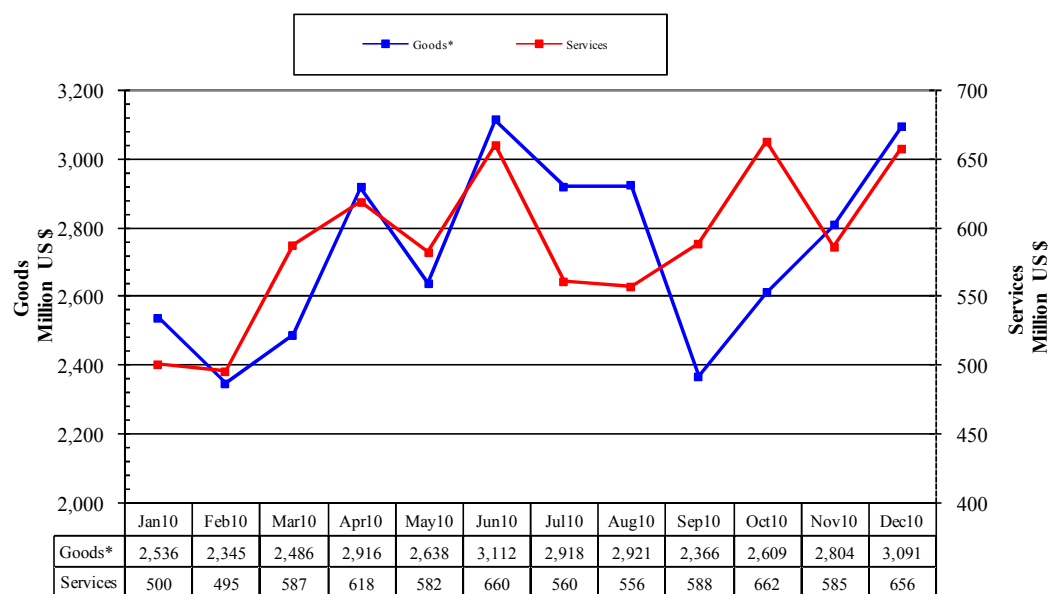


Figure 7: Monthly Imports of Goods & Services



* The data before FY05 is import general merchandise based on Balance of Payments Manual 4 (BPM 4) and onward on Balance of Payments Manual 5 (BPM 5).

Table 4: Annual, Quarterly & Monthly Import of Goods** (Million US\$)

Period	FY02	FY03	FY04	FY05	FY06	FY07	FY08	FY09	FY10	FY11
Annual	9,434	11,333	13,604	18,996	24,994	26,989	35,397	31,747	31,209	16,709*
Growth (%)	-7.5	20.1	20.0	39.6	31.6	8.0	31.2	-10.3	-1.7	
<u>Quarter-wise</u>										
Quarter-I	2,412 (25.6)	2,769 (24.4)	3,014 (22.2)	4,175 (22.0)	5,925 (23.7)	6,933 (25.7)	6,940 (19.6)	10,230 (32.2)	7,485 (24.0)	8,205
Quarter-II	2,216 (23.5)	2,853 (25.2)	3,204 (23.6)	5,047 (26.6)	6,074 (24.3)	6,768 (25.1)	8,548 (24.1)	8,077 (25.4)	7,619 (24.6)	8,504
Quarter-III	2,233 (23.7)	2,744 (24.2)	3,602 (26.5)	4,801 (25.3)	6,261 (25.1)	6,454 (23.9)	9,765 (27.6)	6,275 (19.8)	7,367 (23.6)	
Quarter-IV	2,573 (27.3)	2,967 (26.2)	3,784 (27.8)	4,973 (26.2)	6,734 (26.9)	6,834 (25.3)	10,144 (28.7)	7,165 (22.6)	8,666 (27.8)	
<u>Month-wise</u>										
July	778 (8.2)	943 (8.3)	1,020 (7.5)	1,440 (7.6)	1,772 (7.1)	2,418 (9.0)	2,411 (6.8)	3,373 (10.6)	2,818 (9.0)	2,918
August	850 (9.0)	974 (8.6)	930 (6.8)	1,311 (6.9)	2,087 (8.4)	2,308 (8.6)	2,259 (6.4)	3,162 (10.0)	2,189 (7.0)	2,921
September	784 (8.3)	852 (7.5)	1,064 (7.8)	1,424 (7.5)	2,066 (8.3)	2,207 (8.2)	2,269 (6.4)	3,694 (11.6)	2,478 (7.9)	2,366
October	757 (8.0)	899 (7.9)	1,057 (7.8)	1,616 (8.5)	2,055 (8.2)	2,205 (8.2)	2,604 (7.4)	3,243 (10.2)	2,756 (8.8)	2,609
November	735 (7.8)	920 (8.1)	876 (6.4)	1,745 (9.2)	2,059 (8.2)	2,161 (8.0)	2,963 (8.4)	2,233 (7.0)	2,194 (7.0)	2,804
December	724 (7.7)	1,034 (9.1)	1,271 (9.3)	1,686 (8.9)	1,960 (7.8)	2,402 (8.9)	2,980 (8.4)	2,601 (8.2)	2,741 (8.8)	3,091
January	796 (8.4)	924 (8.2)	1,168 (8.6)	1,427 (7.5)	2,070 (8.3)	2,105 (7.8)	3,329 (9.4)	2,140 (6.7)	2,536 (8.1)	
February	721 (7.6)	827 (7.3)	1,212 (8.9)	1,591 (8.4)	1,886 (7.5)	2,226 (8.2)	2,913 (8.2)	1,884 (5.9)	2,345 (7.5)	
March	716 (7.6)	993 (8.8)	1,222 (9.0)	1,783 (9.4)	2,305 (9.2)	2,123 (7.9)	3,523 (10.0)	2,251 (7.1)	2,486 (8.0)	
April	786 (8.3)	979 (8.6)	1,230 (9.0)	1,508 (7.9)	1,682 (6.7)	2,185 (8.1)	3,391 (9.6)	2,370 (7.5)	2,916 (9.3)	
May	834 (8.8)	959 (8.5)	1,166 (8.6)	1,741 (9.2)	2,361 (9.4)	2,214 (8.2)	3,246 (9.2)	2,002 (6.3)	2,638 (8.5)	
June	953 (10.1)	1,029 (9.1)	1,388 (10.2)	1,724 (9.1)	2,691 (10.8)	2,435 (9.0)	3,507 (9.9)	2,793 (8.8)	3,112 (10.0)	

Notes: 1. Figures in parentheses are percentage to annual import payments of the respective years

2. Due to rounding off separate items, totals may show minor differences

* The total include figures for July to current month

** The data before FY05 is import general merchandise based on Balance of Payments Manual 4 (BPM 4) and onward on Balance of Payments Manual 5 (BPM 5).

Table 5: Annual, Quarterly & Monthly Import of Services

(Million US\$)

Period	FY02	FY03	FY04	FY05	FY06	FY07	FY08	FY09	FY10	FY11
Annual	2,194	2,714	3,961	6,612	8,199	8,310	10,046	7,487	6,919	3,607*
Growth (%)	-6.0	23.7	45.9	66.9	24.0	1.4	20.9	-25.5	-7.6	
<u>Quarter-wise</u>										
Quarter-I	586 (26.7)	579 (21.3)	799 (20.2)	1,449 (21.9)	1,953 (23.8)	2,039 (24.5)	2,194 (21.8)	2,392 (31.9)	1,585 (22.9)	1,704
Quarter-II	531 (24.2)	586 (21.6)	945 (23.9)	1,669 (25.2)	2,061 (25.1)	2,193 (26.4)	2,548 (25.4)	2,021 (27.0)	1,892 (27.3)	1,903
Quarter-III	552 (25.2)	649 (23.9)	1,097 (27.7)	1,764 (26.7)	2,061 (25.1)	2,014 (24.2)	2,569 (25.6)	1,389 (18.6)	1,582 (22.9)	
Quarter-IV	525 (23.9)	900 (33.2)	1,120 (28.3)	1,730 (26.2)	2,124 (25.9)	2,064 (24.8)	2,735 (27.2)	1,685 (22.5)	1,860 (26.9)	
<u>Month-wise</u>										
July	178 (8.1)	181 (6.7)	305 (7.7)	432 (6.5)	573 (7.0)	735 (8.8)	755 (7.5)	743 (9.9)	568 (8.2)	560
August	189 (8.6)	184 (6.8)	207 (5.2)	473 (7.2)	735 (9.0)	619 (7.4)	757 (7.5)	816 (10.9)	489 (7.1)	556
September	219 (10.0)	214 (7.9)	287 (7.2)	544 (8.2)	645 (7.9)	685 (8.2)	682 (6.8)	833 (11.1)	528 (7.6)	588
October	190 (8.7)	189 (7.0)	327 (8.3)	525 (7.9)	626 (7.6)	645 (7.8)	782 (7.8)	839 (11.2)	691 (10.0)	662
November	180 (8.2)	195 (7.2)	238 (6.0)	489 (7.4)	674 (8.2)	782 (9.4)	963 (9.6)	577 (7.7)	562 (8.1)	585
December	161 (7.3)	202 (7.4)	380 (9.6)	655 (9.9)	761 (9.3)	766 (9.2)	803 (8.0)	605 (8.1)	639 (9.2)	656
January	159 (7.2)	248 (9.1)	378 (9.5)	539 (8.2)	672 (8.2)	683 (8.2)	894 (8.9)	448 (6.0)	500 (7.2)	
February	166 (7.6)	185 (6.8)	339 (8.6)	561 (8.5)	622 (7.6)	633 (7.6)	751 (7.5)	458 (6.1)	495 (7.2)	
March	227 (10.3)	216 (8.0)	380 (9.6)	664 (10.0)	767 (9.4)	698 (8.4)	924 (9.2)	483 (6.5)	587 (8.5)	
April	166 (7.6)	331 (12.2)	379 (9.6)	610 (9.2)	617 (7.5)	680 (8.2)	999 (9.9)	542 (7.2)	618 (8.9)	
May	147 (6.7)	276 (10.2)	355 (9.0)	582 (8.8)	744 (9.1)	657 (7.9)	797 (7.9)	523 (7.0)	582 (8.4)	
June	212 (9.7)	293 (10.8)	386 (9.7)	538 (8.1)	763 (9.3)	727 (8.7)	939 (9.3)	620 (8.3)	660 (9.5)	

Notes: 1. Figures in parentheses are percentage to annual import payments of the respective years

2. Due to rounding off separate items, totals may show minor differences

* The total include figures for July to current month