

SUMMARY

Table 1(a) : Monthly Import of Goods & Services

(Million US\$)

Items	April	
	2010	2009
I. Import Payments (Banks)	2,797	2,263
II. Freight & Insurance	224	181
III. Other Import unaccounted by Banks	202	268
Unclassified Imports	151	113
Imports NRI, Sale of Duty Free Shops	4	4
Imports under Foreign Economic Assistance	42	142
Land borne Imports with Afghanistan	6	6
PIA & PNSC	4	2
Capital Equipment	0	0
Cost of Imports (Ex. Cos.)	0	0
Refund & Rebate	-4	-6
Import from EPZ	0	9
(A) Import General Merchandise (I-II+III)	2,775	2,350
(B) Other Import under BPM5*	29	20
(C) Import of Goods (A+B)	2,804	2,370
(D) Import of Services	588	542
(E) Import of Goods & Services (C+D)	3,392	2,913

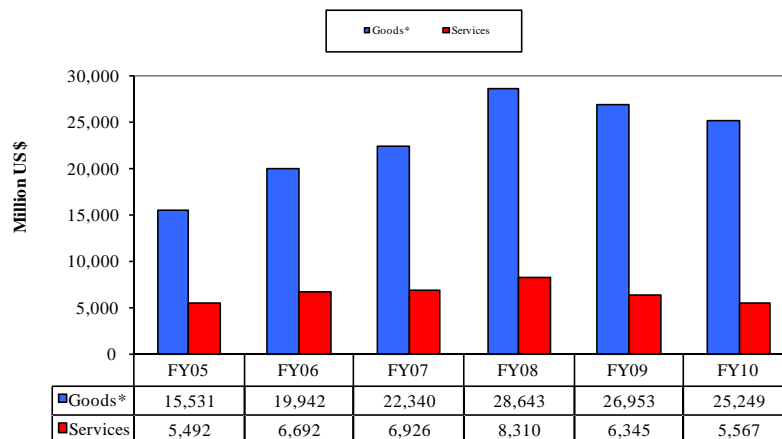
* See "Introduction" for details:

Table 1(b) : Key Indicators of Import of Goods and Services

(Million US\$)

April 2010	3,392
March 2010	3,092
% Change during April 2010 over March 2010	9.7
April 2009	2,913
% Change during April 2010 over April 2009	16.4
July-April 2009-10	30,816
July-April 2008-09	33,296
% Change during July-April 2009-10 over July-April 2008-09	-7.4
Monthly average during July-April 2009-10	3,082
Monthly average during July-April 2008-09	3,330
FY09	39,235
FY08	45,443
% Change during FY09 over FY08	-13.7
Monthly average during FY09	3,270
Monthly average during FY08	3,787

Figure 1. Import During Jul-Apr

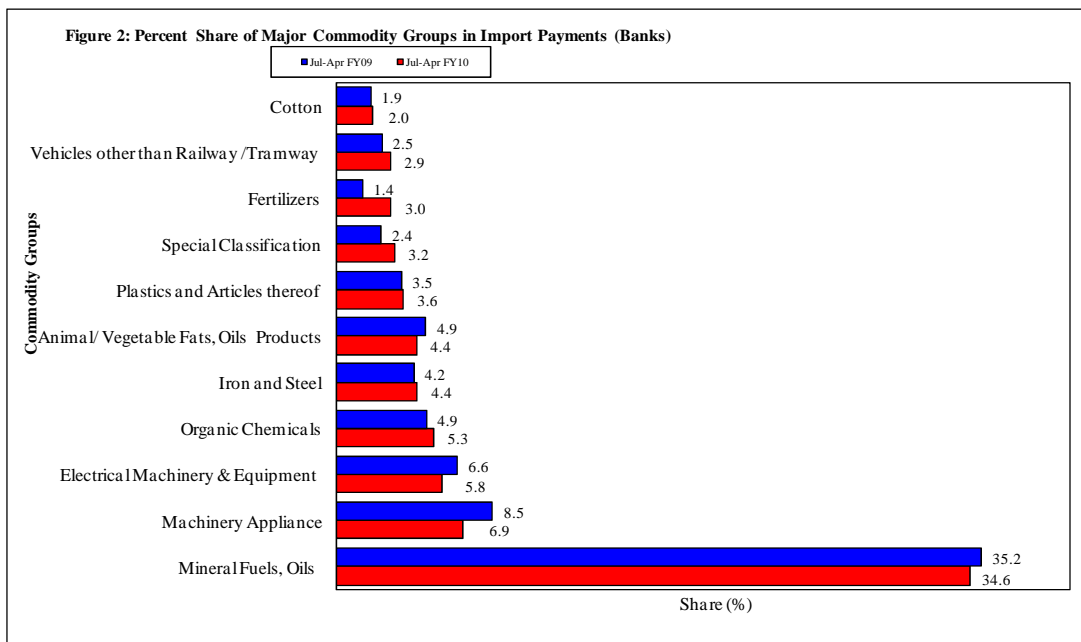


*The data is import of goods based on Balance of Payments Manual 5 (BPM 5).

Table 2: Import Payments by Major Groups of Goods & Services

(Amount in Million)

Goods/ Services	April			July-April		% Change
	2010	2010	2009	2009-10	2008-09	
	Pak Rs.	US \$				
Goods						
I. Total Import Payments (Banks)	234,802	2,797	2,263	25,332	26,513	-4.5
Mineral Fuels, Oils and Their Distillation Product	76,962	917	590	8,759	9,324	-6.1
Nuclear Reactors, Boilers, Machinery and Appliance	15,719	187	179	1,745	2,259	-22.7
Electrical Machinery & Equipment and Parts thereof	10,336	123	203	1,460	1,747	-16.4
Organic Chemicals	14,375	171	108	1,344	1,299	3.5
Iron and Steel	14,530	173	169	1,117	1,118	-0.1
Animal or Vegetable Fats, Oils & Cleavage Products	9,144	109	98	1,104	1,293	-14.7
Plastics and Articles thereof	7,898	94	83	920	936	-1.7
Special Classification Provisions	5,041	60	75	800	648	23.5
Fertilizers	2,430	29	32	753	381	97.8
Vehicles other than Railway /Tramway Rolling Stock	7,155	85	41	741	658	12.6
Cotton	8,201	98	59	494	496	-0.3
Oil Seeds and Oleaginous Fruit	4,568	54	67	440	274	60.9
Miscellaneous Chemical Products	3,440	41	34	422	329	28.4
Ships, Boats and Floating Structures	8,351	99	25	345	173	98.8
Optical, Photographic, Measuring and Medical Inst.	2,222	26	38	305	350	-12.8
Man-Made Staple Fibers	2,724	32	31	302	254	18.9
Pharmaceutical Products	2,226	27	20	291	238	22.2
Man-Made Filaments	2,789	33	27	278	220	26.6
All Others	36,691	437	384	3,710	4,517	-17.9
II. Freight & Insurance	18,784	224	181	2,027	2,121	-4.5
III. Other Import Unaccounted by Banks	16,930	202	268	1,730	2,261	-23.5
(A) Import General Merchandise (I-II+III)	232,948	2,775	2,350	25,035	26,653	-6.1
(B) Other Import under BPM5*	2,417	29	20	214	299	-28.6
(C) Import of Goods (A+B)	235,366	2,804	2,370	25,249	26,953	-6.3
Services						
Transportation	25,528	304	257	2,812	3,119	-9.8
Travel	6,832	81	42	745	910	-18.2
Communication Services	913	11	10	129	116	11.2
Construction Services	209	2	7	27	50	-46.6
Insurance Services	761	9	10	125	114	9.4
Financial Services	989	12	9	79	148	-46.4
Computer & Information Services	1,253	15	16	136	99	37.6
Royalties & License fees	1,090	13	8	91	81	12.5
Other Business Services	7,787	93	135	901	1,388	-35.1
Personal, cultural & recreational Services	41	0	0	18	0	--
Government Services	2,905	48	48	505	319	58.5
(D) Total Import of Services	48,308	588	542	5,567	6,344	-12.2
Total Import of Goods & Services (C+D)	283,673	3,392	2,913	30,816	33,296	-7.4



Note: - The share is based on the share of commodities in Import Payments through Banks

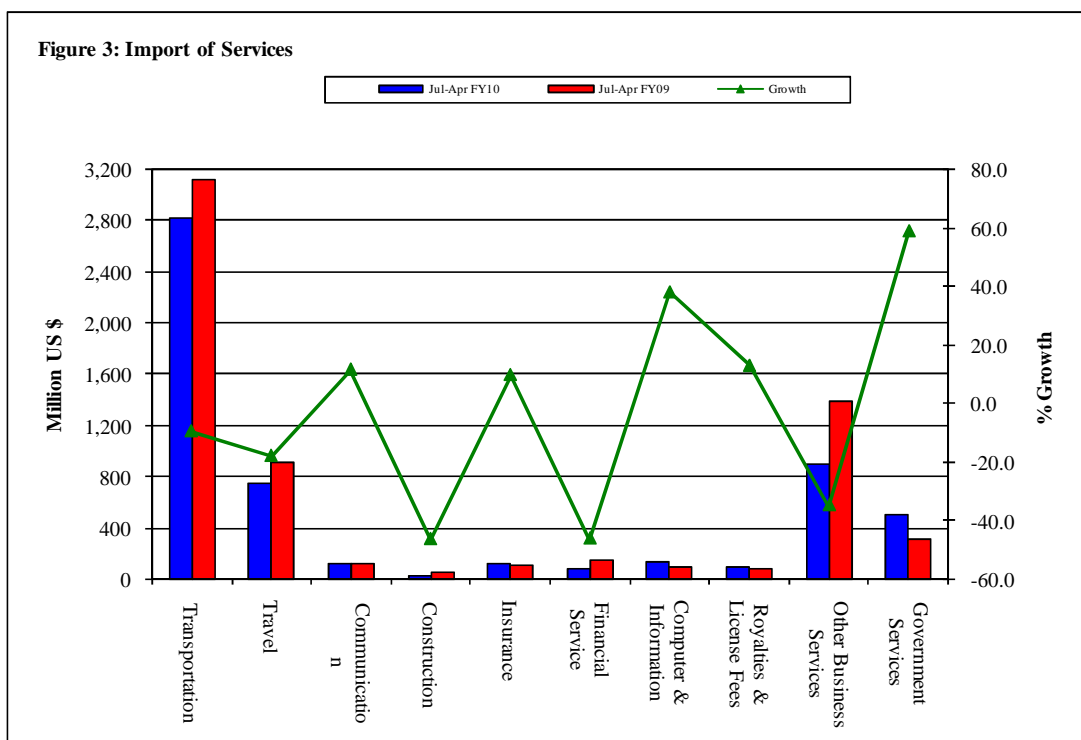
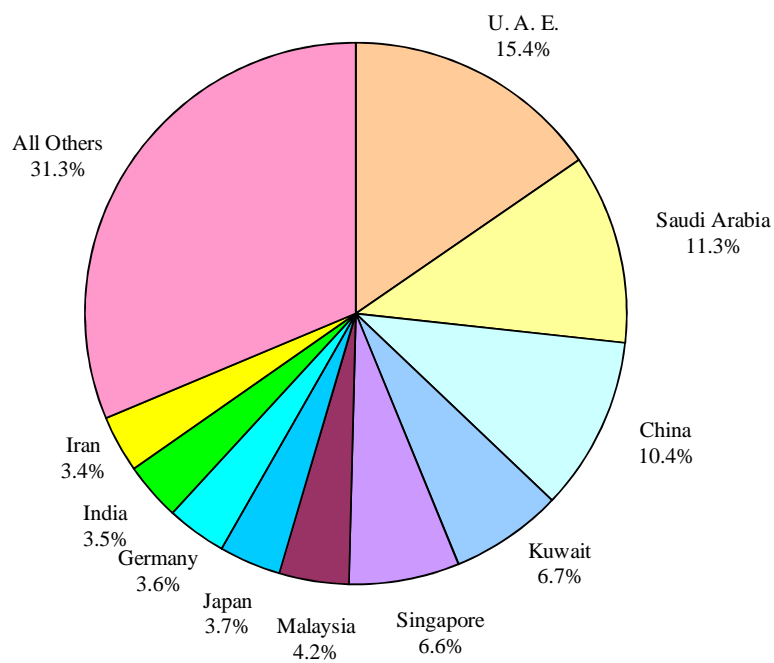


Table 3: Import of Goods & Services by Major Countries

(Amount in Million)

Country	April			July-April		%
	2010	2010	2009	2009-10	2008-09	Change
	Pak Rs.	US \$				
Goods						
I. Total Import Payments (Banks)	234,802	2,797	2,263	25,332	26,513	-4.5
U. A. E.	32,014	381	258	3,902	3,910	-0.2
Saudi Arabia	27,150	323	228	2,869	2,910	-1.4
China	21,257	253	243	2,629	2,215	18.7
Kuwait	17,091	204	96	1,700	1,996	-14.8
Singapore	17,714	211	99	1,670	1,248	33.8
Malaysia	9,049	108	96	1,053	1,134	-7.1
Japan	8,606	103	66	934	933	0.1
Germany	7,213	86	78	908	955	-4.9
India	11,978	143	86	877	867	1.1
Iran	8,225	98	50	859	377	127.8
Switzerland	3,677	44	111	791	878	-9.8
U. S. A.	8,543	102	82	778	869	-10.4
U. K.	4,575	55	65	578	661	-12.6
South Korea	4,703	56	41	420	557	-24.6
Australia	1,092	13	16	357	241	48.5
All Others	51,917	619	649	5,007	6,764	-26.0
II. Freight & Insurance	18,784	224	181	2,027	2,121	-4.5
III. Other Import Unaccounted by Banks	16,930	202	268	1,730	2,261	-23.5
(A) Import General Merchandise (I-II+III)	232,948	2,775	2,350	25,035	26,653	-6.1
(B) Other Import under BPM5*	2,417	29	20	214	299	-28.6
(C) Import of Goods (A+B)	235,366	2,804	2,370	25,249	26,953	-6.3
Services						
U. S. A.	5,423	65	94	756	775	-2.5
U. A. E.	4,556	54	60	617	696	-11.4
Saudi Arabia	3,728	44	31	402	447	-10.1
U. K.	3,662	44	31	378	489	-22.8
China	3,517	44	62	367	555	-33.9
Singapore	2,085	25	17	226	194	16.7
Germany	1,361	16	13	161	147	9.8
Kuwait	1,503	18	10	149	172	-13.2
Japan	1,167	14	10	124	136	-8.7
Malaysia	942	11	9	110	120	-8.7
Switzerland	671	8	11	89	95	-5.6
France	805	10	7	85	119	-28.7
Thailand	542	6	7	76	73	4.5
India	989	12	7	75	74	1.5
Iran	665	8	4	70	31	127.9
All Others	16,692	210	169	1,883	2,222	-15.3
(D) Total Import of Services	48,308	588	542	5,567	6,344	-12.2
Total Import of Goods & Services (C+D)	283,673	3,392	2,913	30,816	33,296	-7.4

Figure 4: % Share of Major Countries in Import Payments (Banks) During Jul-Apr FY10



Note: % Share is based on Import Payments through Banks

Figure 5: % Share of Major Countries in Import of Services During Jul-Apr FY10

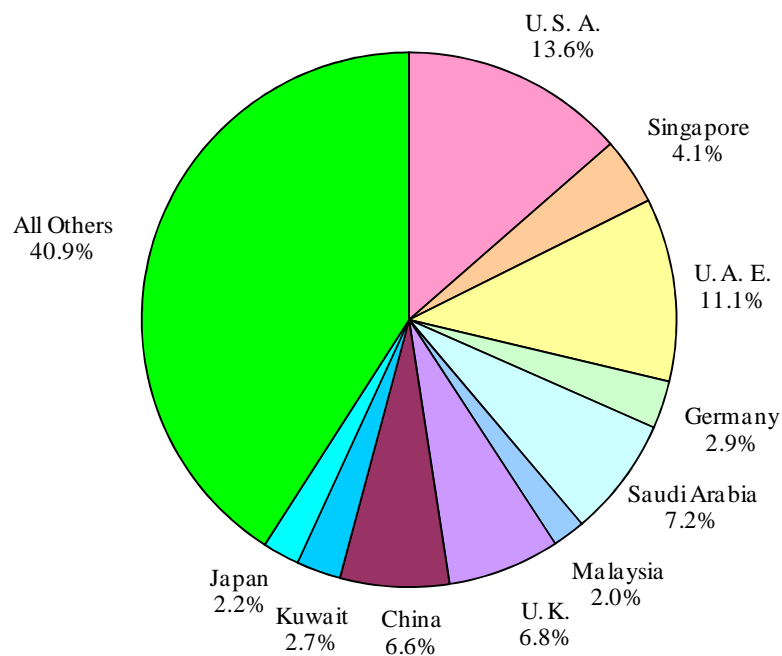
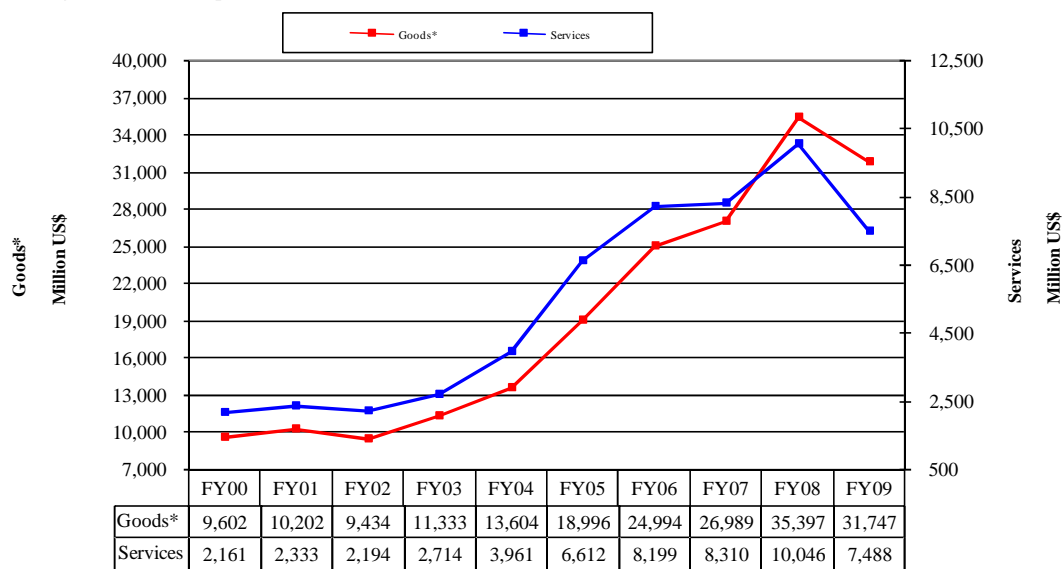
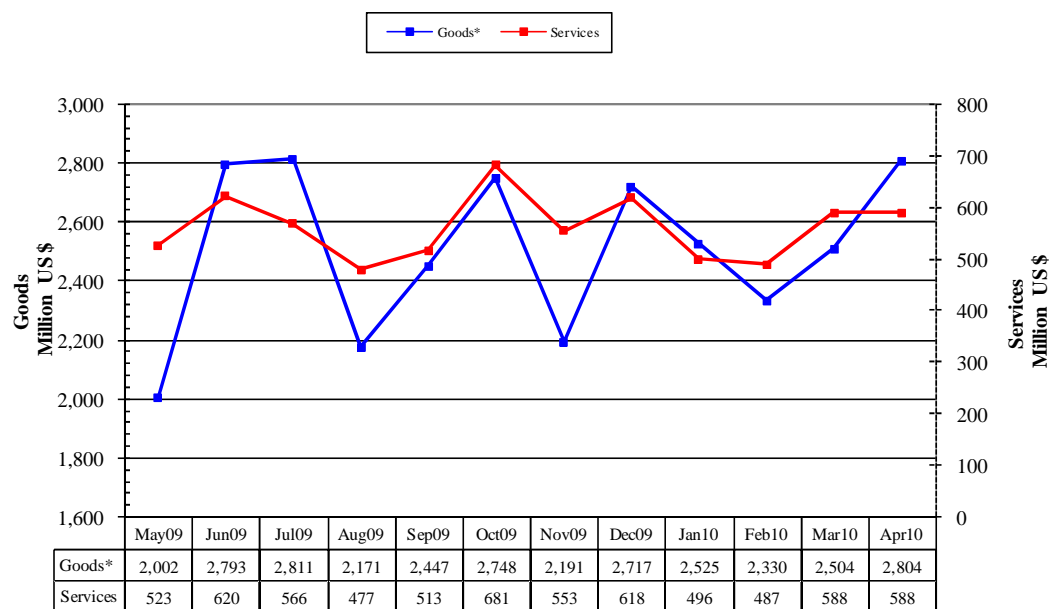


Figure 6: Annual Import of Goods & Services from FY00 to FY09**Figure 7: Monthly Imports of Goods & Services**

* The data before FY05 is import general merchandise based on Balance of Payments Manual 4 (BPM 4) and onward on Balance of Payments Manual 5 (BPM 5).

Table 4: Annual, Quarterly & Monthly Import of Goods** (Million US\$)

Period	FY01	FY02	FY03	FY04	FY05	FY06	FY07	FY08	FY09	FY10
Annual	10,202	9,434	11,333	13,604	18,996	24,994	26,989	35,397	31,747	25,249*
Growth (%)	6.2	-7.5	20.1	20.0	39.6	31.6	8.0	31.2	-10.3	
Quarter-wise										
Quarter-I	2,703 (26.5)	2,412 (25.6)	2,769 (24.4)	3,014 (22.2)	4,175 (22.0)	5,925 (23.7)	6,933 (25.7)	6,940 (19.6)	10,230 (32.2)	7,429
Quarter-II	2,386 (23.4)	2,216 (23.5)	2,853 (25.2)	3,204 (23.6)	5,047 (26.6)	6,074 (24.3)	6,768 (25.1)	8,548 (24.1)	8,077 (25.4)	7,655
Quarter-III	2,670 (26.2)	2,233 (23.7)	2,744 (24.2)	3,602 (26.5)	4,801 (25.3)	6,261 (25.1)	6,454 (23.9)	9,765 (27.6)	6,275 (19.8)	7,360
Quarter-IV	2,443 (23.9)	2,573 (27.3)	2,967 (26.2)	3,784 (27.8)	4,973 (26.2)	6,734 (26.9)	6,834 (25.3)	10,144 (28.7)	7,165 (22.6)	
July	867 (8.5)	778 (8.2)	943 (8.3)	1,020 (7.5)	1,440 (7.6)	1,772 (7.1)	2,418 (9.0)	2,411 (6.8)	3,373 (10.6)	2,811
August	918 (9.0)	850 (9.0)	974 (8.6)	930 (6.8)	1,311 (6.9)	2,087 (8.4)	2,308 (8.6)	2,259 (6.4)	3,162 (10.0)	2,171
September	918 (9.0)	784 (8.3)	852 (7.5)	1,064 (7.8)	1,424 (7.5)	2,066 (8.3)	2,207 (8.2)	2,269 (6.4)	3,694 (11.6)	2,447
October	816 (8.0)	757 (8.0)	899 (7.9)	1,057 (7.8)	1,616 (8.5)	2,055 (8.2)	2,205 (8.2)	2,604 (7.4)	3,243 (10.2)	2,748
November	901 (8.8)	735 (7.8)	920 (8.1)	876 (6.4)	1,745 (9.2)	2,059 (8.2)	2,161 (8.0)	2,963 (8.4)	2,233 (7.0)	2,191
December	669 (6.6)	724 (7.7)	1,034 (9.1)	1,271 (9.3)	1,686 (8.9)	1,960 (7.8)	2,402 (8.9)	2,980 (8.4)	2,601 (8.2)	2,717
January	1,015 (9.9)	796 (8.4)	924 (8.2)	1,168 (8.6)	1,427 (7.5)	2,070 (8.3)	2,105 (7.8)	3,329 (9.4)	2,140 (6.7)	2,525
February	770 (7.5)	721 (7.6)	827 (7.3)	1,212 (8.9)	1,591 (8.4)	1,886 (7.5)	2,226 (8.2)	2,913 (8.2)	1,884 (5.9)	2,330
March	885 (8.7)	716 (7.6)	993 (8.8)	1,222 (9.0)	1,783 (9.4)	2,305 (9.2)	2,123 (7.9)	3,523 (10.0)	2,251 (7.1)	2,504
April	773 (7.6)	786 (8.3)	979 (8.6)	1,230 (9.0)	1,508 (7.9)	1,682 (6.7)	2,185 (8.1)	3,391 (9.6)	2,370 (7.5)	2,804
May	804 (7.9)	834 (8.8)	959 (8.5)	1,166 (8.6)	1,741 (9.2)	2,361 (9.4)	2,214 (8.2)	3,246 (9.2)	2,002 (6.3)	
June	866 (8.5)	953 (10.1)	1,029 (9.1)	1,388 (10.2)	1,724 (9.1)	2,691 (10.8)	2,435 (9.0)	3,507 (9.9)	2,793 (8.8)	

Notes: 1. Figures in parentheses are percentage to annual import payments of the respective years

2. Due to rounding off separate items, totals may show minor differences

* The total include figures for July to current month

** The data before FY05 is import general merchandise based on Balance of Payments Manual 4 (BPM 4) and onward on Balance of Payments Manual 5 (BPM 5).

Table 5: Annual, Quarterly & Monthly Import of Services

(Million US\$)

Period	FY01	FY02	FY03	FY04	FY05	FY06	FY07	FY08	FY09	FY10
Annual	2,333	2,194	2,714	3,961	6,612	8,199	8,310	10,046	7,488	5,567*
Growth (%)	8.0	-6.0	23.7	45.9	66.9	24.0	1.4	20.9	-25.5	
Quarter-wise										
Quarter-I	577 (24.7)	586 (26.7)	579 (21.3)	799 (20.2)	1,449 (21.9)	1,953 (23.8)	2,039 (24.5)	2,194 (21.8)	2,392 (31.9)	1,556
Quarter-II	564 (24.2)	531 (24.2)	586 (21.6)	945 (23.9)	1,669 (25.2)	2,061 (25.1)	2,193 (26.4)	2,548 (25.4)	2,021 (27.0)	1,852
Quarter-III	634 (27.2)	552 (25.2)	649 (23.9)	1,097 (27.7)	1,764 (26.7)	2,061 (25.1)	2,014 (24.2)	2,569 (25.6)	1,390 (18.6)	1,571
Quarter-IV	558 (23.9)	525 (23.9)	900 (33.2)	1,120 (28.3)	1,730 (26.2)	2,124 (25.9)	2,064 (24.8)	2,735 (27.2)	1,685 (22.5)	
Month-wise										
July	182 (7.8)	178 (8.1)	181 (6.7)	305 (7.7)	432 (6.5)	573 (7.0)	735 (8.8)	755 (7.5)	743 (9.9)	566
August	183 (7.8)	189 (8.6)	184 (6.8)	207 (5.2)	473 (7.2)	735 (9.0)	619 (7.4)	757 (7.5)	816 (10.9)	477
September	212 (9.1)	219 (10.0)	214 (7.9)	287 (7.2)	544 (8.2)	645 (7.9)	685 (8.2)	682 (6.8)	833 (11.1)	513
October	195 (8.4)	190 (8.7)	189 (7.0)	327 (8.3)	525 (7.9)	626 (7.6)	645 (7.8)	782 (7.8)	839 (11.2)	681
November	204 (8.7)	180 (8.2)	195 (7.2)	238 (6.0)	489 (7.4)	674 (8.2)	782 (9.4)	963 (9.6)	577 (7.7)	553
December	165 (7.1)	161 (7.3)	202 (7.4)	380 (9.6)	655 (9.9)	761 (9.3)	766 (9.2)	803 (8.0)	605 (8.1)	618
January	230 (9.9)	159 (7.2)	248 (9.1)	378 (9.5)	539 (8.2)	672 (8.2)	683 (8.2)	894 (8.9)	448 (6.0)	496
February	218 (9.3)	166 (7.6)	185 (6.8)	339 (8.6)	561 (8.5)	622 (7.6)	633 (7.6)	751 (7.5)	458 (6.1)	487
March	186 (8.0)	227 (10.3)	216 (8.0)	380 (9.6)	664 (10.0)	767 (9.4)	698 (8.4)	924 (9.2)	484 (6.5)	588
April	190 (8.1)	166 (7.6)	331 (12.2)	379 (9.6)	610 (9.2)	617 (7.5)	680 (8.2)	999 (9.9)	542 (7.2)	588
May	195 (8.4)	147 (6.7)	276 (10.2)	355 (9.0)	582 (8.8)	744 (9.1)	657 (7.9)	797 (7.9)	523 (7.0)	
June	173 (7.4)	212 (9.7)	293 (10.8)	386 (9.7)	538 (8.1)	763 (9.3)	727 (8.7)	939 (9.3)	620 (8.3)	

Notes: 1. Figures in parentheses are percentage to annual import payments of the respective years

2. Due to rounding off separate items, totals may show minor differences

* The total include figures for July to current month