

SUMMARY

Table 1(a) : Monthly Import of Goods & Services (Million US\$)

Items	December	
	2008	2007
I. Import Payments (Banks)	2,237	2,670
II. Freight & Insurance	179	214
III. Other Import unaccounted by Banks	489	465
Unclassified Imports	115	116
Imports NRI, Sale of Duty Free Shops	3	11
Imports under Foreign Economic Assistance	337	318
Land borne Imports with Afghanistan	11	9
PIA & PNSC	4	4
Capital Equipment	0	0
Cost of Imports (Ex. Cos.)	0	0
Refund & Rebate	-10	-11
Import from EPZ	29	18
(A) Import General Merchandise (I-II+III)	2,547	2,921
(B) Other Import under BPM5*	28	30
(C) Import of Goods (A+B)	2,575	2,951
(D) Import of Services	563	764
(E) Import of Goods & Services (C+D)	3,138	3,715

* See "Introduction" for details:

Table 1(b) : Key Indicators of Import of Goods and Services (Million US\$)

December 2008	3,138
November 2008	2,820
%Change during December 2008 over November 2008	11.3
November 2007	3,715
%Change during December 2008 over December 2007	-15.5
July-December 2008	22,009
July-December 2007	20,159
%Change during July-December 2008 over July-December 2007	9.2
Monthly average during July-December 2008	3,668
Monthly average during July-December 2007	3,360
FY08	45,314
FY07	35,299
%Change during FY08 over FY07	28.4
Monthly average during FY08	3,776
Monthly average during FY07	2,942

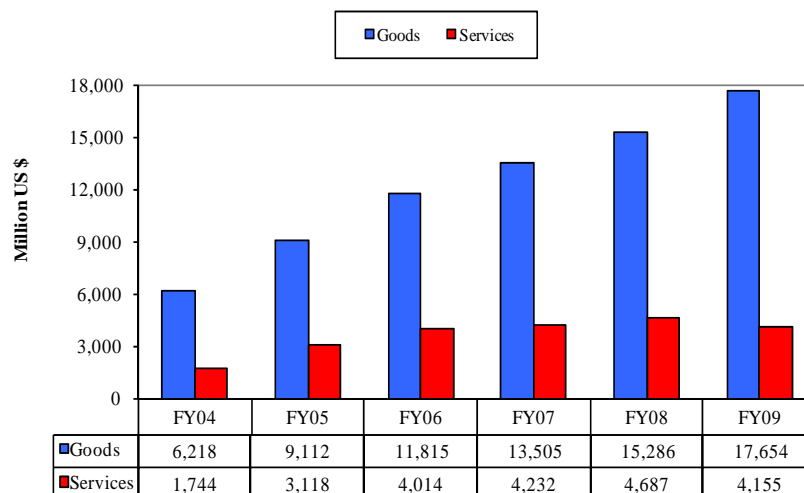
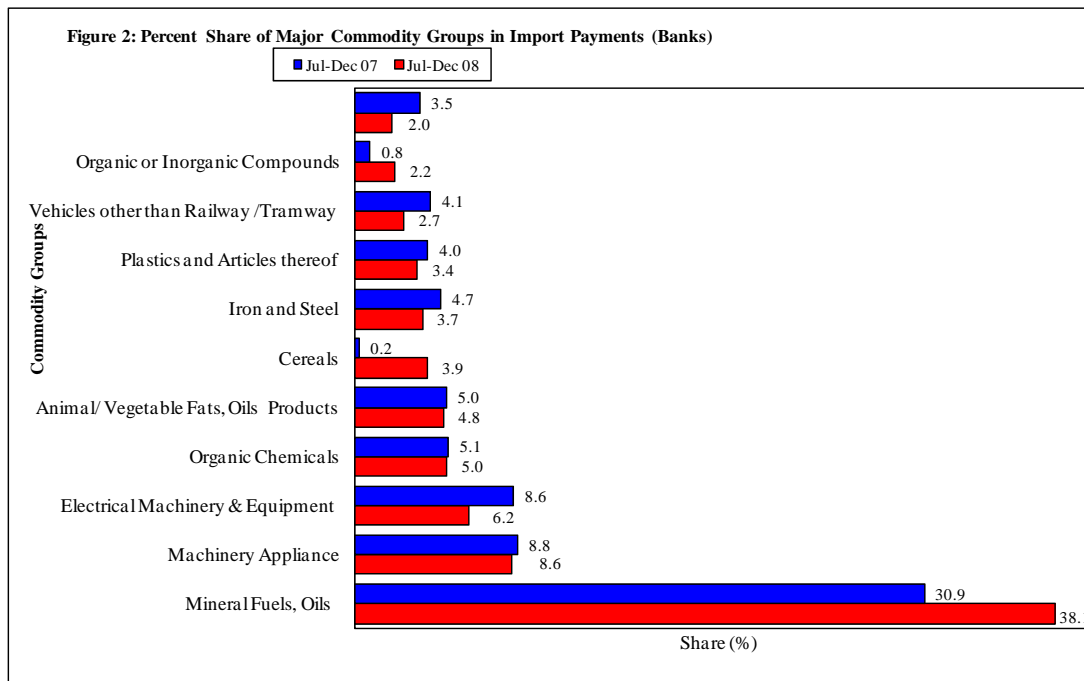
Figure 1. Import During Jul-Dec 2008

Table 2: Import Payments by Major Groups of Goods & Services

(Amount in Million)

Goods/ Services	December			July-December		% Change
	2008	2008	2007	2008-09	2007-08	
	Pak Rs.	US \$				
Goods						
I. Total Import Payments (Banks)	176,514	2,237	2,670	17,850	15,144	17.9
Mineral Fuels, Oils and Their Distillation Product	53,260	675	954	6,793	4,687	44.9
Nuclear Reactors, Boilers, Machinery and Appliance	19,587	248	233	1,526	1,338	14.1
Electrical Machinery & Equipment and Parts thereof	18,819	238	203	1,107	1,305	-15.2
Organic Chemicals	9,279	118	110	892	769	16.0
Animal or Vegetable Fats, Oils & Cleavage Products	7,773	98	159	861	752	14.5
Cereals	966	12	27	701	35	1,913.4
Iron and Steel	6,931	88	118	654	708	-7.6
Plastics and Articles thereof	5,304	67	95	609	602	1.1
Vehicles other than Railway /Tramway Rolling Stock	4,664	59	88	477	623	-23.5
Organic or Inorganic Compounds of Precious Metals	4,901	62	18	390	126	209.3
Special Classification Provisions	6,723	85	100	354	535	-33.8
Cotton	4,123	52	97	344	389	-11.4
Optical, Photographic, Measuring and Medical Inst.	1,923	24	31	215	185	16.3
Miscellaneous Chemical Products	2,958	37	26	200	179	12.2
Fertilizers	3,106	39	39	198	416	-52.3
Man-Made Staple Fibers	1,527	19	29	163	132	23.4
Paper and Paperboard, Articles of Paper Pulp	1,421	18	30	161	200	-19.4
Pharmaceutical Products	2,003	25	14	160	111	44.4
All Others	21,247	269	296	2,043	2,053	-0.5
II. Freight & Insurance	14,121	179	214	1,428	1,212	17.9
III. Other Import Unaccounted by Banks	38,629	489	465	1,232	1,353	-8.9
(A) Import General Merchandise (I-II+III)	201,022	2,547	2,921	17,654	15,286	15.5
(B) Other Import under BPM5*	2,210	28	30	200	187	7.2
(C) Import of Goods (A+B)	203,232	2,575	2,951	17,854	15,472	15.4
Services						
Transportation	22,809	289	332	1,931	1,706	13.2
Travel	3,788	48	130	745	810	-8.0
Communication Services	947	12	4	62	41	51.2
Construction Services	160	2	4	36	26	38.5
Insurance Services	1,578	20	10	69	90	-23.3
Financial Services	2,289	29	25	104	71	46.5
Computer & Information Services	631	8	8	52	71	-26.8
Royalties & License fees	1,184	15	8	49	62	-21.0
Other Business Services	9,787	124	207	963	1,614	-40.3
Personal, cultural & recreational Services	1	0	0	0	0	--
Government Services	1,263	16	36	144	196	-26.5
(D) Total Import of Services	44,437	563	764	4,155	4,687	-11.4
Total Import of Goods & Services (C+D)	247,669	3,138	3,715	22,009	20,159	9.2



Note: - The share is based on the share of commodities in Import Payments through Banks

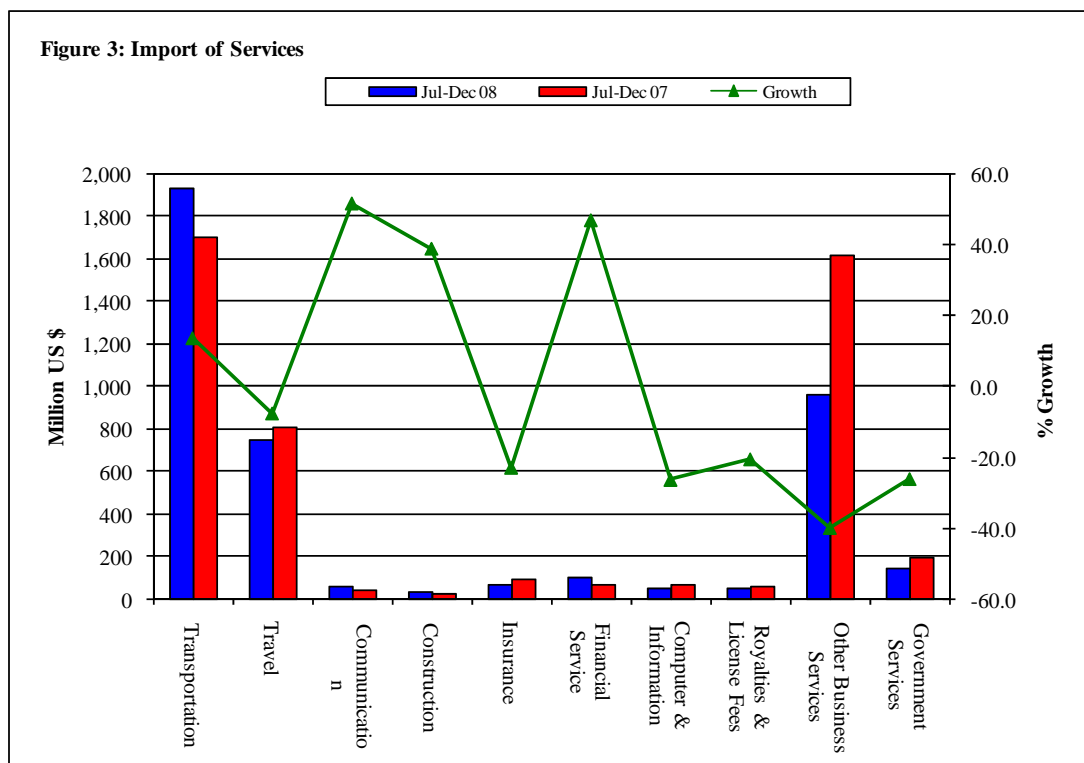
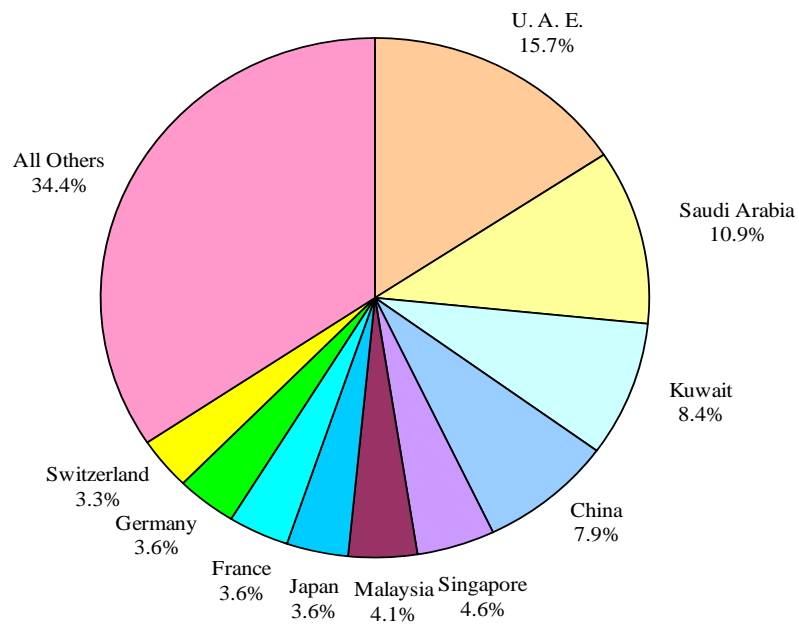


Table 3: Import of Goods & Services by Major Countries

(Amount in Million)

Country	December			July-December		% Change
	2008	2008	2007	2008-09	2007-08	
	Pak Rs.	US \$				
Goods						
I. Total Import Payments (Banks)	176,514	2,237	2,670	17,850	15,144	17.9
U. A. E.	34,923	442	452	2805	2272	23.5
Saudi Arabia	9,009	114	315	1942	1605	21.0
Kuwait	8,852	112	256	1503	1000	50.3
China	14,847	188	227	1411	1416	-0.4
Singapore	7,180	91	102	820	755	8.7
Malaysia	8,885	113	98	724	571	26.7
Japan	7,269	92	126	649	691	-6.1
France	8,896	113	69	639	244	162.1
Germany	9,601	122	92	635	597	6.4
Switzerland	4,619	59	68	580	386	50.3
U. S. A.	8,448	107	114	574	717	-19.9
India	4,940	63	95	562	506	11.0
U. K.	5,952	75	67	412	480	-14.1
South Korea	2,816	36	47	357	315	13.3
Italy	3,755	48	36	319	241	32.5
All Others	36,523	463	506	3916	3347	17.0
II. Freight & Insurance	14,121	179	214	1,428	1,212	17.9
III. Other Import Unaccounted by Banks	38,629	489	465	1,232	1,353	-8.9
(A) Import General Merchandise (I-II+III)	201,022	2,547	2,921	17,654	15,286	15.5
(B) Other Import under BPM5*	2,210	28	30	200	187	7.2
(C) Import of Goods (A+B)	203,232	2,575	2,951	17,854	15,472	15.4
Services						
U. S. A.	4,804	60	82	539	547	-1.3
U. A. E.	6,126	77	83	391	433	-9.6
U. K.	6,307	80	43	365	348	4.7
Saudi Arabia	3,624	46	58	351	274	27.8
China	3,381	43	96	344	581	-40.7
France	1,294	16	14	120	77	56.5
Singapore	1,293	17	20	115	133	-13.4
Kuwait	759	10	22	105	87	20.7
Germany	1,572	20	12	90	95	-5.5
Japan	1056	13	24	71	122	-41.3
Malaysia	936	12	12	64	71	-10.1
Hong Kong	464	6	27	64	170	-62.5
Thailand	687	9	15	57	60	-3.9
Switzerland	508	6	12	49	77	-35.6
Canada	185	2	6	41	58	-28.5
All Others	11,442	145	238	1388	1557	-10.8
(D) Total Import of Services	44,437	563	764	4,155	4,687	-11.4
Total Import of Goods & Services (C+D)	247,669	3,138	3,715	22,009	20,159	9.2

Figure 4: % Share of Major Countries in Import Payments (Banks) During Jul-Dec 2008



Note: % Share is based on Import Payments through Banks

Figure 5: % Share of Major Countries in Import of Services During Jul-Dec 2008

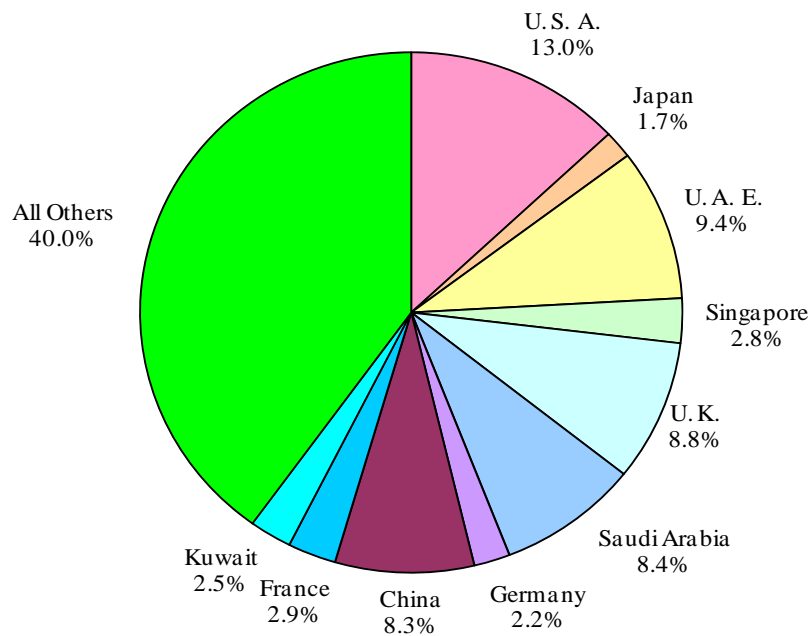
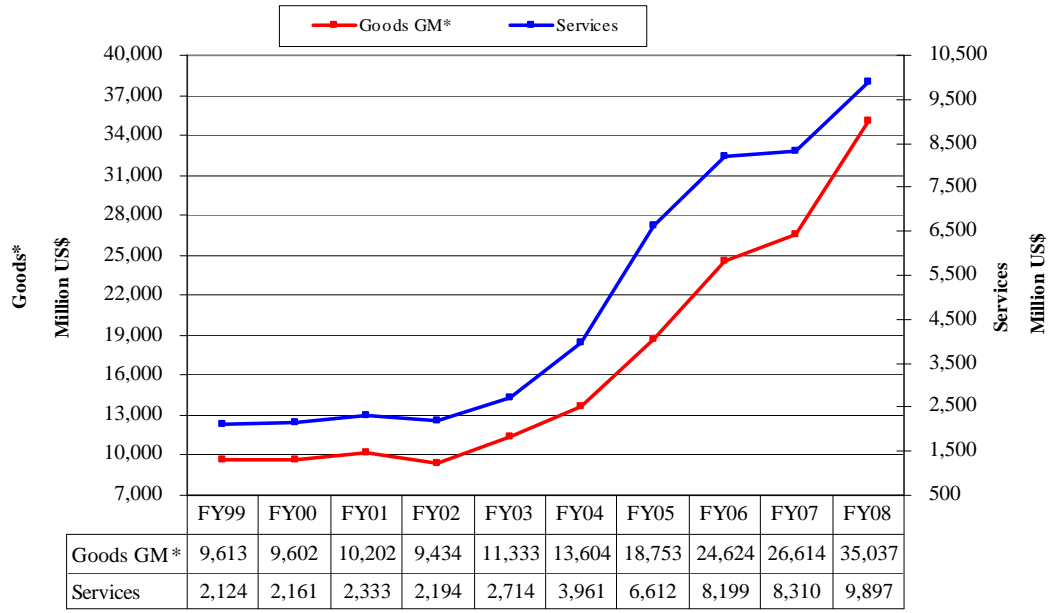


Figure 6: Annual Import of Goods & Services from FY99 to FY08

*General Merchandise

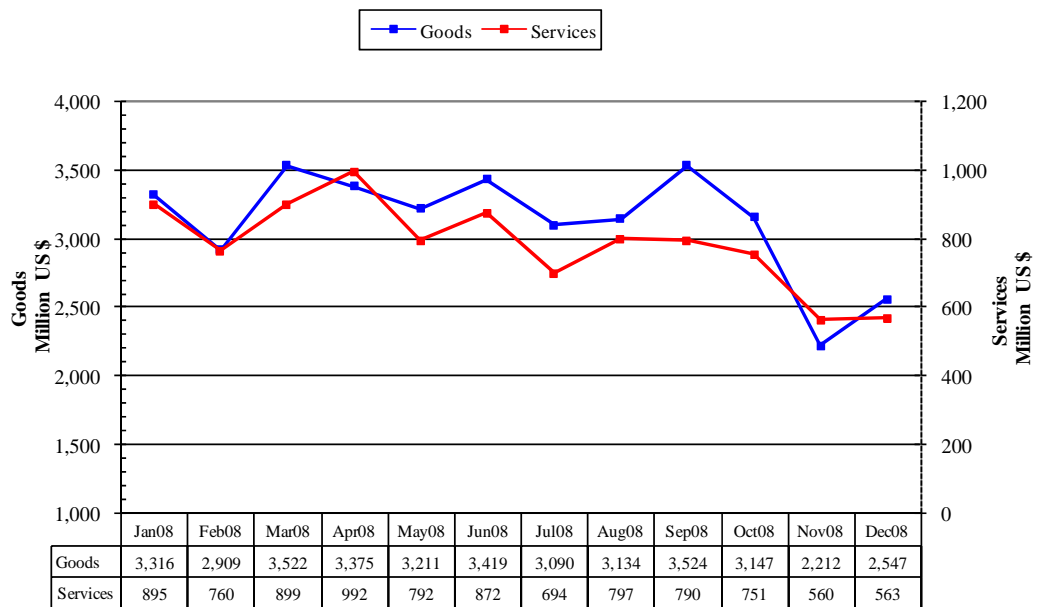
Figure 7: Monthly Imports of Goods & Services

Table 4: Annual, Quarterly & Monthly Import of Goods*

(Million US\$)

Period	FY00	FY01	FY02	FY03	FY04	FY05	FY06	FY07	FY08	FY09
Annual	9,602	10,202	9,434	11,333	13,604	18,753	24,624	26,614	35,037	17,654**
Growth (%)	-0.1	6.2	-7.5	20.1	20.0	37.8	31.3	8.1	31.6	
Quarter-wise										
Quarter-I	2,264 (23.6)	2,703 (26.5)	2,412 (25.6)	2,769 (24.4)	3,014 (22.2)	4,122 (22.0)	5,841 (23.7)	6,824 (25.6)	6,859 (19.6)	
Quarter-II	2,531 (26.4)	2,386 (23.4)	2,216 (23.5)	2,853 (25.2)	3,204 (23.6)	4,990 (26.6)	5,974 (24.2)	6,681 (25.1)	8,426 (24.0)	
Quarter-III	2,435 (25.4)	2,670 (26.2)	2,233 (23.7)	2,744 (24.2)	3,602 (26.5)	4,732 (25.2)	6,160 (25.0)	6,358 (23.9)	9,747 (27.8)	
Quarter-IV	2,372 (24.7)	2,443 (23.9)	2,573 (27.3)	2,967 (26.2)	3,784 (27.8)	4,909 (26.2)	6,649 (27.1)	6,751 (25.4)	10,005 (28.6)	
July	690 (7.2)	867 (8.5)	778 (8.2)	943 (8.3)	1,020 (7.5)	1,424 (7.6)	1,749 (7.1)	2,384 (9.0)	2,379 (6.8)	3,090
August	738 (7.7)	918 (9.0)	850 (9.0)	974 (8.6)	930 (6.8)	1,294 (6.9)	2,056 (8.3)	2,267 (8.5)	2,224 (6.3)	3,134
September	836 (8.7)	918 (9.0)	784 (8.3)	852 (7.5)	1,064 (7.8)	1,404 (7.5)	2,036 (8.3)	2,173 (8.2)	2,256 (6.4)	3,524
October	779 (8.1)	816 (8.0)	757 (8.0)	899 (7.9)	1,057 (7.8)	1,598 (8.5)	2,021 (8.2)	2,178 (8.2)	2,564 (7.3)	3,147
November	826 (8.6)	901 (8.8)	735 (7.8)	920 (8.1)	876 (6.4)	1,727 (9.2)	2,024 (8.2)	2,132 (8.0)	2,942 (8.4)	2,212
December	926 (9.6)	669 (6.6)	724 (7.7)	1,034 (9.1)	1,271 (9.3)	1,665 (8.9)	1,929 (7.8)	2,371 (8.9)	2,921 (8.3)	2,547
January	940 (9.8)	1,015 (9.9)	796 (8.4)	924 (8.2)	1,168 (8.6)	1,406 (7.5)	2,037 (8.3)	2,075 (7.8)	3,316 (9.5)	
February	820 (8.5)	770 (7.5)	721 (7.6)	827 (7.3)	1,212 (8.9)	1,568 (8.4)	1,854 (7.5)	2,200 (8.3)	2,909 (8.3)	
March	675 (7.0)	885 (8.7)	716 (7.6)	993 (8.8)	1,222 (9.0)	1,758 (9.4)	2,269 (9.2)	2,083 (7.8)	3,522 (10.1)	
April	723 (7.5)	773 (7.6)	786 (8.3)	979 (8.6)	1,230 (9.0)	1,499 (8.0)	1,656 (6.7)	2,157 (8.1)	3,375 (9.6)	
May	816 (8.5)	804 (7.9)	834 (8.8)	959 (8.5)	1,166 (8.6)	1,719 (9.2)	2,330 (9.5)	2,187 (8.2)	3,211 (9.2)	
June	833 (8.7)	866 (8.5)	953 (10.1)	1,029 (9.1)	1,388 (10.2)	1,691 (9.0)	2,663 (10.9)	2,407 (9.0)	3,419 (9.8)	

Notes: 1. Figures in parentheses are percentage to annual import payments of the respective years

2. Due to rounding off separate items, totals may show minor differences

* General Merchandise/ Merchandise

** The total include figures for July to current month

Table 5: Annual, Quarterly & Monthly Import of Services

(Million US\$)

Period	FY00	FY01	FY02	FY03	FY04	FY05	FY06	FY07	FY08	FY09
Annual	2,161	2,333	2,194	2,714	3,961	6,612	8,199	8,310	9,897	4,155*
Growth (%)	1.7	8.0	-6.0	23.7	45.9	66.9	24.0	1.4	19.1	
Quarter-wise										
Quarter-I	515 (23.8)	577 (24.7)	586 (26.7)	579 (21.3)	799 (20.2)	1,449 (21.9)	1,953 (23.8)	2,039 (24.5)	2,222 (22.5)	
Quarter-II	535 (24.8)	564 (24.2)	531 (24.2)	586 (21.6)	945 (23.9)	1,669 (25.2)	2,061 (25.1)	2,193 (26.4)	2,465 (24.9)	
Quarter-III	585 (27.1)	634 (27.2)	552 (25.2)	649 (23.9)	1,097 (27.7)	1,764 (26.7)	2,061 (25.1)	2,014 (24.2)	2,554 (25.8)	
Quarter-IV	526 (24.3)	558 (23.9)	525 (23.9)	900 (33.2)	1,120 (28.3)	1,730 (26.2)	2,124 (25.9)	2,064 (24.8)	2,656 (26.8)	
Month-wise										
July	157 (7.3)	182 (7.8)	178 (8.1)	181 (6.7)	305 (7.7)	432 (6.5)	573 (7.0)	735 (8.8)	769 (7.8)	694
August	159 (7.4)	183 (7.8)	189 (8.6)	184 (6.8)	207 (5.2)	473 (7.2)	735 (9.0)	619 (7.4)	760 (7.7)	797
September	199 (9.2)	212 (9.1)	219 (10.0)	214 (7.9)	287 (7.2)	544 (8.2)	645 (7.9)	685 (8.2)	693 (7.0)	790
October	146 (6.8)	195 (8.4)	190 (8.7)	189 (7.0)	327 (8.3)	525 (7.9)	626 (7.6)	645 (7.8)	765 (7.7)	751
November	194 (9.0)	204 (8.7)	180 (8.2)	195 (7.2)	238 (6.0)	489 (7.4)	674 (8.2)	782 (9.4)	936 (9.5)	560
December	195 (9.0)	165 (7.1)	161 (7.3)	202 (7.4)	380 (9.6)	655 (9.9)	761 (9.3)	766 (9.2)	764 (7.7)	563
January	190 (8.8)	230 (9.9)	159 (7.2)	248 (9.1)	378 (9.5)	539 (8.2)	672 (8.2)	683 (8.2)	895 (9.0)	
February	202 (9.3)	218 (9.3)	166 (7.6)	185 (6.8)	339 (8.6)	561 (8.5)	622 (7.6)	633 (7.6)	760 (7.7)	
March	193 (8.9)	186 (8.0)	227 (10.3)	216 (8.0)	380 (9.6)	664 (10.0)	767 (9.4)	698 (8.4)	899 (9.1)	
April	153 (7.1)	190 (8.1)	166 (7.6)	331 (12.2)	379 (9.6)	610 (9.2)	617 (7.5)	680 (8.2)	992 (10.0)	
May	155 (7.2)	195 (8.4)	147 (6.7)	276 (10.2)	355 (9.0)	582 (8.8)	744 (9.1)	657 (7.9)	792 (8.0)	
June	218 (10.1)	173 (7.4)	212 (9.7)	293 (10.8)	386 (9.7)	538 (8.1)	763 (9.3)	727 (8.7)	872 (8.8)	

Notes: 1. Figures in parentheses are percentage to annual import payments of the respective years

2. Due to rounding off separate items, totals may show minor differences

* The total include figures for July to current month