

## SUMMARY

Table 1(a) : Monthly Import of Goods &amp; Services.

(Million US\$)

Items	December	
	2007	2006
I. Import Payments (Banks)	2,670	2,118
II. Freight & Insurance	214	169
III. Other Import unaccounted by Banks	465	422
Unclassified Imports	116	170
Imports NRI, Sale of Duty Free Shops	11	9
Imports under Foreign Economic Assistance	318	51
Land borne Imports with Afghanistan	9	7
PIA & PNSC	4	182
Capital Equipment	0	0
Cost of Imports (Ex. Cos.)	0	3
Refund & Rebate	-11	-8
Import from EPZ	18	9
(A) Import General Merchandise (I-II+III)	2,921	2,371
(B) Other Import under BPM5*	30	31
(C) Import of Goods (A+B)	2,951	2,402
(D) Import of Services	764	766
(E) Import of Goods & Services (C+D)	3,715	3,168

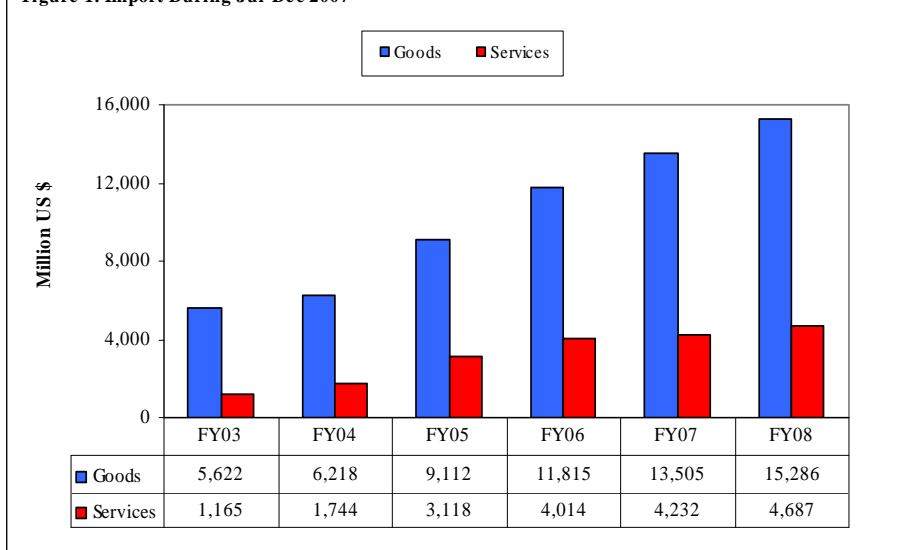
\* See "Introduction" for details:

Table 1(b) : Key Indicators of Import of Goods and Services

(Million US\$)

December 2007	3,715
November 2007	3,918
%Change during December 2007 over November 2007	-5.2
December 2006	3,168
%Change during December 2007 over December 2006	17.3
July-December 2007-08	20,159
July-December 2006-07	17,933
%Change during July-December 2007-08 over July-December 2006-07	12.4
Monthly average during July-December 2007-08	3,360
Monthly average during July-December 2006-07	2,989
FY07	35,254
FY06	33,193
%Change during FY07 over FY06	6.2
Monthly average during FY07	2,938
Monthly average during FY06	2,766

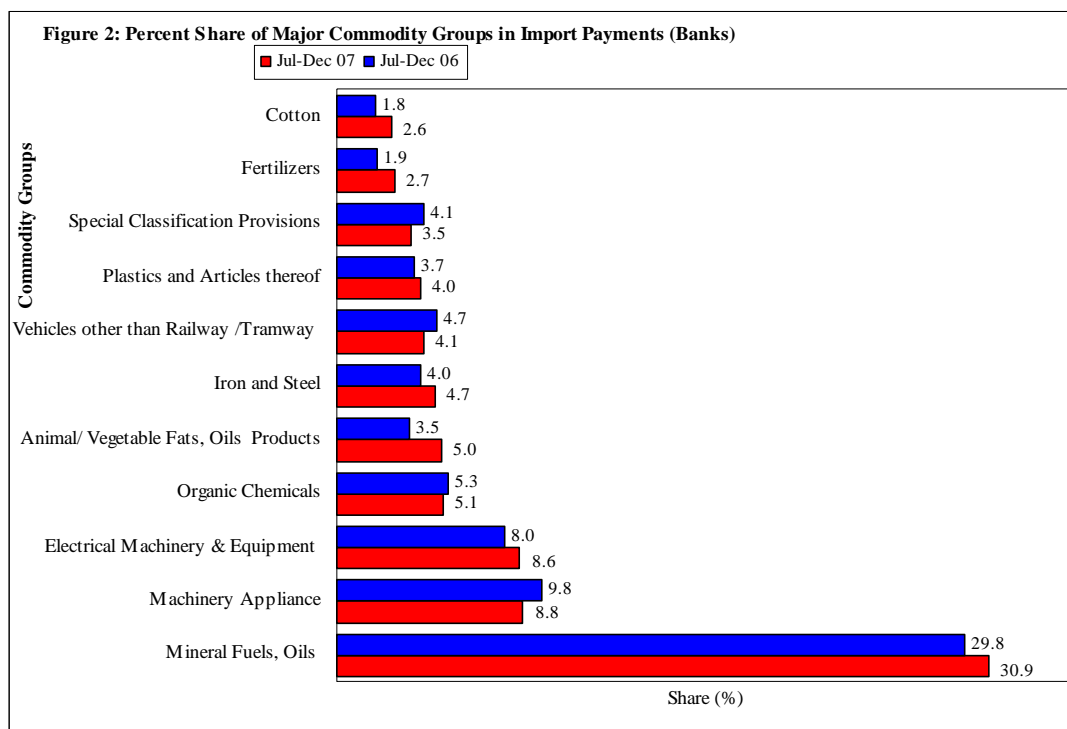
Figure 1. Import During Jul-Dec 2007



**Table 2: Import Payments by Major Groups of Goods & Services**

(Amount in Million)

Goods/ Services	December			July-December		% Change
	2007	2007	2006	2007-08	2006-07	
	Pak Rs.	US \$				
Goods						
I. Total Import Payments (Banks)	163,347	2,670	2,118	15,144	13,411	12.9
Mineral Fuels, Oils and Their Distillation Product	58,385	954	526	4,687	4,000	17.2
Nuclear Reactors, Boilers, Machinery and Appliance	14,239	233	247	1,338	1,309	2.2
Electrical Machinery & Equipment and Parts thereof	12,418	203	197	1,305	1,070	22.0
Organic Chemicals	6,736	110	144	769	705	9.1
Animal or Vegetable Fats, Oils & Cleavage Products	9,751	159	63	752	466	61.5
Iron and Steel	7,242	118	92	708	532	33.0
Vehicles other than Railway /Tramway Rolling Stock	5,405	88	88	623	634	-1.7
Plastics and Articles thereof	5,812	95	78	602	495	21.6
Special Classification Provisions	6,137	100	107	535	553	-3.2
Fertilizers	2,358	39	24	416	252	65.1
Cotton	5,931	97	48	389	243	59.9
Oil Seeds and Oleaginous Fruit	1,633	27	33	269	193	39.1
Paper and Paperboard, Articles of Paper Pulp	1,831	30	22	200	142	40.5
Optical, Photographic, Measuring and Medical Inst.	1,926	31	29	185	188	-2.0
Miscellaneous Chemical Products	1,597	26	29	179	158	13.2
Rubbers and Articles thereof	1,300	21	21	147	142	3.1
Man-Made Staple Fibers	1,801	29	14	132	116	13.8
Man-Made Filaments	1,393	23	20	131	120	9.4
All Others	17,454	285	336	1,778	2,091	-15.0
II. Freight & Insurance	13,068	214	169	1,212	1,073	12.9
III. Other Import Unaccounted by Banks	28,421	465	422	1,353	1,167	15.9
(A) Import General Merchandise (I-II+III)	178,700	2,921	2,371	15,286	13,505	13.2
(B) Other Import under BPM5*	1,829	30	31	187	196	-4.8
(C) Import of Goods (A+B)	180,529	2,951	2,402	15,472	13,701	12.9
Services						
Transportation	20,312	332	261	1,706	1,629	4.7
Travel	7,953	130	183	810	842	-3.8
Communication Services	245	4	8	41	38	7.9
Construction Services	246	4	12	26	43	-39.5
Insurance Services	612	10	12	90	75	20.0
Financial Services	1,529	25	24	71	81	-12.3
Computer & Information Services	489	8	11	71	39	82.1
Royalties & License fees	489	8	6	62	70	-11.4
Other Business Services	12,664	207	216	1,614	1,247	29.4
Personal, cultural & recreational Services	3	0	0	0	0	-200.0
Government Services	2,202	36	33	196	168	16.7
(D) Total Import of Services	46,746	764	766	4,687	4,232	10.8
Total Import of Goods & Services (C+D)	227,275	3,715	3,168	20,159	17,933	12.4



Note: - The share is based on the share of commodities in Import Payments through Banks

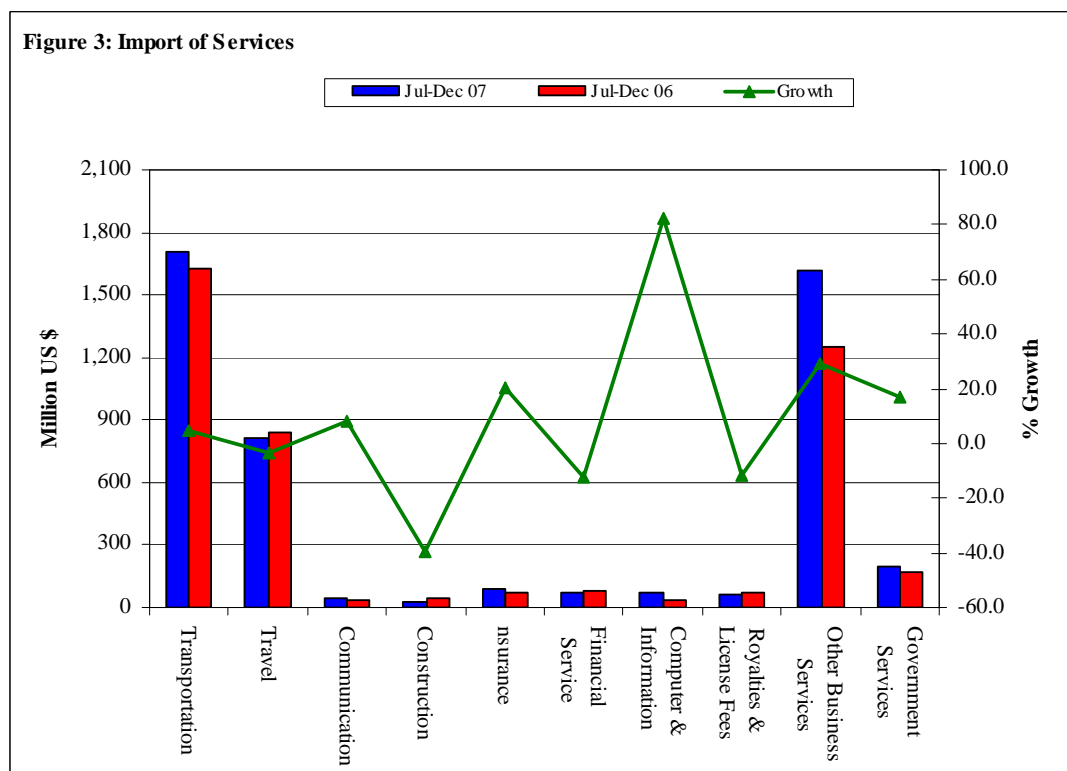
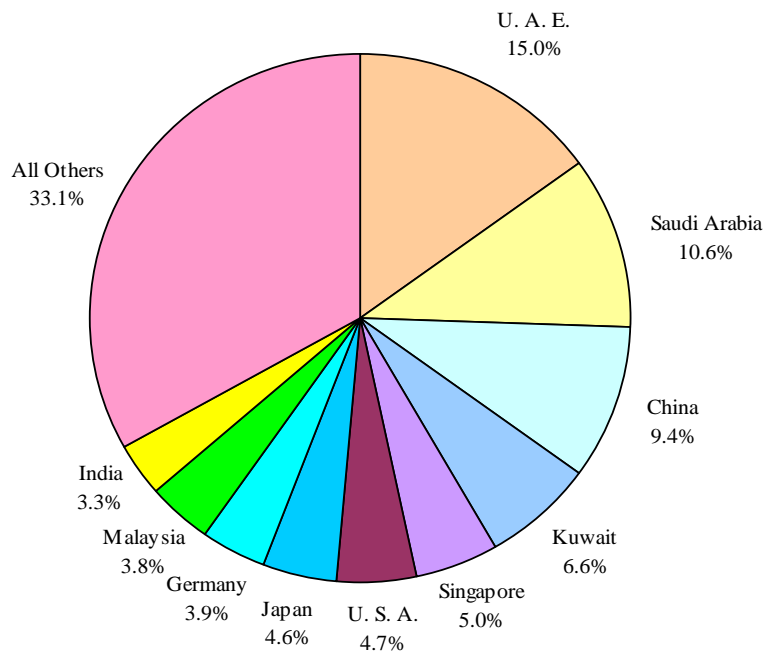


Table 3: Import of Goods &amp; Services by Major Countries

(Amount in Million)

Table 3: Import of Goods & Services by Major Countries						
Country	December			July-December		%
	2007	2007	2006	2007-08	2006-07	Change
	Pak Rs.	US \$				
Goods						
I. Total Import Payments (Banks)	163,347	2,670	2,118	15,144	13,411	12.9
U. A. E.	27,668	452	231	2272	1503	51.1
Saudi Arabia	19,284	315	227	1605	1773	-9.5
China	13,912	227	228	1416	1079	31.3
Kuwait	15,632	256	112	1000	956	4.7
Singapore	6,236	102	61	755	741	1.9
U. S. A.	6,968	114	81	717	478	49.8
Japan	7,717	126	122	691	731	-5.5
Germany	5,598	92	122	597	630	-5.3
Malaysia	6,001	98	59	571	389	46.9
India	5,831	95	79	506	574	-11.8
U. K.	4,092	67	76	480	390	23.1
Switzerland	4,179	68	60	386	394	-2.2
South Korea	2,850	47	58	315	273	15.2
Finland	4,714	77	24	250	158	58.7
France	4,232	69	35	244	263	-7.4
All Others	28,433	465	543	3338	3077	8.5
II. Freight & Insurance	13,068	214	169	1,212	1,073	12.9
III. Other Import Unaccounted by Banks	28,421	465	422	1,353	1,167	15.9
(A) Import General Merchandise (I-II+III)	178,700	2,921	2,371	15,286	13,505	13.2
(B) Other Import under BPM5*	1,829	30	31	187	196	-4.8
(C) Import of Goods (A+B)	180,529	2,951	2,402	15,472	13,701	12.9
Services						
U. S. A.	5,049	82	100	597	488	22.3
China	5,843	96	86	549	429	28.1
U. A. E.	5,048	83	62	435	371	17.2
U. K.	2,617	43	51	371	266	39.3
Saudi Arabia	3,531	58	55	329	285	15.6
Hong Kong	1,623	27	26	165	146	13.1
Singapore	1,194	20	20	120	140	-14.6
Japan	1,470	24	25	112	168	-33.5
France	887	14	10	109	58	87.3
Germany	747	12	20	84	114	-26.3
Kuwait	1333	22	10	76	89	-14.2
Switzerland	755	12	13	68	67	2.6
Malaysia	758	12	10	60	63	-5.2
South Korea	599	10	9	58	61	-4.9
Thailand	930	15	9	57	58	-2.4
All Others	14,362	235	261	1496	1428	4.8
(D) Total Import of Services	46,746	764	766	4,687	4,232	10.8
Total Import of Goods & Services (C+D)	227,275	3,715	3,168	20,159	17,933	12.4

**Figure 4: % Share of Major Countries in Import Payments (Banks) During Jul-Dec 2007**

Note: % Share is based on Import Payments through Banks

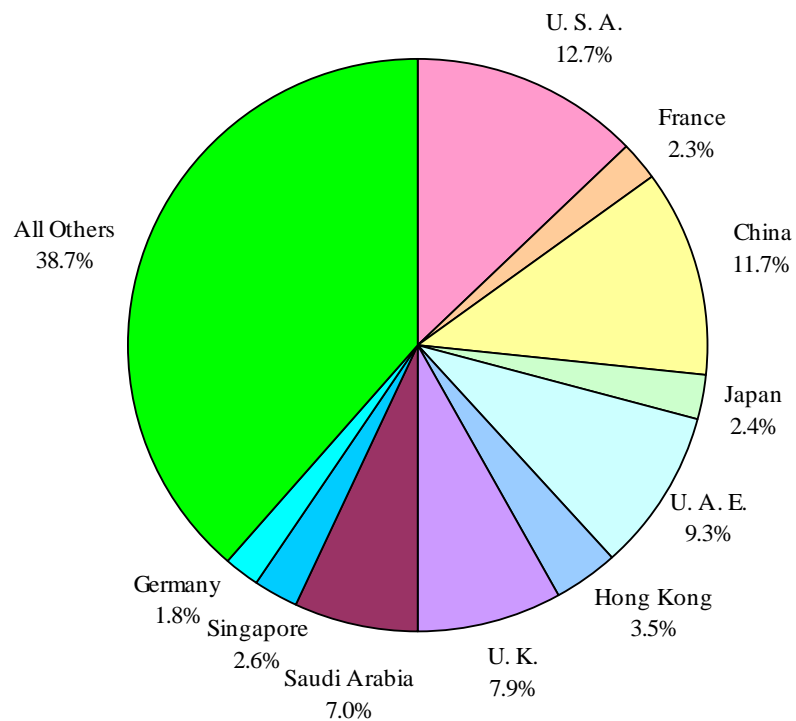
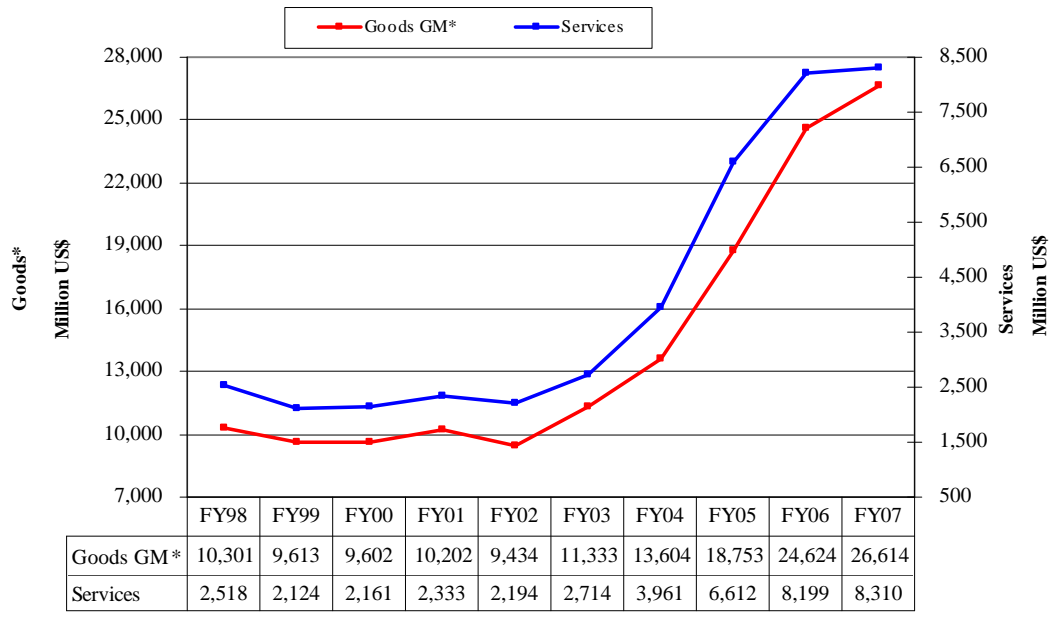
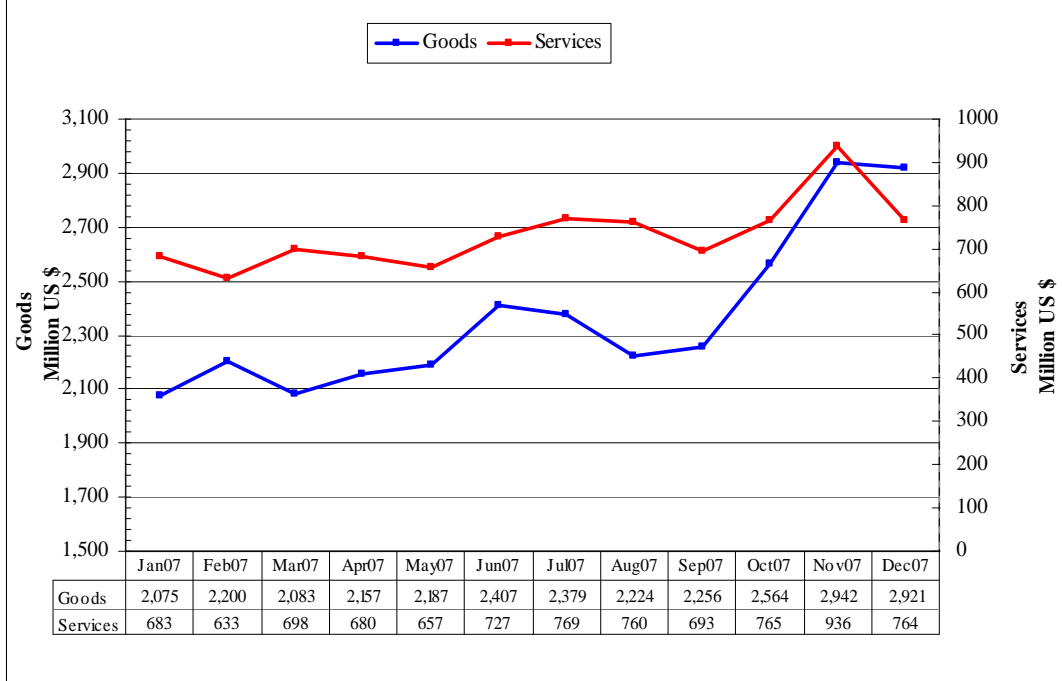
**Figure 5: % Share of Major Countries in Import of Services During Jul-Dec 2007**

Figure 6: Annual Import of Goods &amp; Services from FY98 to FY07



\*General Merchandise

Figure 7: Monthly Imports of Goods &amp; Services



**Table 4: Annual, Quarterly & Monthly Import of Goods\*** (Million US\$)

Period	FY99	FY00	FY01	FY02	FY03	FY04	FY05	FY06	FY07	FY08
Annual	9,613	9,602	10,202	9,434	11,333	13,604	18,753	24,624	26,614	15,286**
Growth (%)	-6.7	-0.1	6.2	-7.5	20.1	20.0	37.8	31.3	8.1	
<b><u>Quarter-wise</u></b>										
Quarter-I	2,165 (22.5)	2,264 (23.6)	2,703 (26.5)	2,412 (25.6)	2,769 (24.4)	3,014 (22.2)	4,122 (22.0)	5,841 (23.7)	6,824 (25.6)	6,859
Quarter-II	2,723 (28.3)	2,531 (26.4)	2,386 (23.4)	2,216 (23.5)	2,853 (25.2)	3,204 (23.6)	4,990 (26.6)	5,974 (24.2)	6,681 (25.1)	8,426
Quarter-III	2,208 (23.0)	2,435 (25.4)	2,670 (26.2)	2,233 (23.7)	2,744 (24.2)	3,602 (26.5)	4,732 (25.2)	6,160 (25.0)	6,358 (23.9)	
Quarter-IV	2,517 (26.2)	2,372 (24.7)	2,443 (23.9)	2,573 (27.3)	2,967 (26.2)	3,784 (27.8)	4,909 (26.2)	6,649 (27.1)	6,751 (25.4)	
<b><u>Month-wise</u></b>										
July	728 (7.6)	690 (7.2)	867 (8.5)	778 (8.2)	943 (8.3)	1,020 (7.5)	1,424 (7.6)	1,749 (7.1)	2,384 (9.0)	2,379
August	645 (6.7)	738 (7.7)	918 (9.0)	850 (9.0)	974 (8.6)	930 (6.8)	1,294 (6.9)	2,056 (8.3)	2,267 (8.5)	2,224
September	792 (8.2)	836 (8.7)	918 (9.0)	784 (8.3)	852 (7.5)	1,064 (7.8)	1,404 (7.5)	2,036 (8.3)	2,173 (8.2)	2,256
October	856 (8.9)	779 (8.1)	816 (8.0)	757 (8.0)	899 (7.9)	1,057 (7.8)	1,598 (8.5)	2,021 (8.2)	2,178 (8.2)	2,564
November	892 (9.3)	826 (8.6)	901 (8.8)	735 (7.8)	920 (8.1)	876 (6.4)	1,727 (9.2)	2,024 (8.2)	2,132 (8.0)	2,942
December	975 (10.1)	926 (9.6)	669 (6.6)	724 (7.7)	1,034 (9.1)	1,271 (9.3)	1,665 (8.9)	1,929 (7.8)	2,371 (8.9)	2,921
January	763 (7.9)	940 (9.8)	1,015 (9.9)	796 (8.4)	924 (8.2)	1,168 (8.6)	1,406 (7.5)	2,037 (8.3)	2,075 (7.8)	
February	751 (7.8)	820 (8.5)	770 (7.5)	721 (7.6)	827 (7.3)	1,212 (8.9)	1,568 (8.4)	1,854 (7.5)	2,200 (8.3)	
March	694 (7.2)	675 (7.0)	885 (8.7)	716 (7.6)	993 (8.8)	1,222 (9.0)	1,758 (9.4)	2,269 (9.2)	2,083 (7.8)	
April	780 (8.1)	723 (7.5)	773 (7.6)	786 (8.3)	979 (8.6)	1,230 (9.0)	1,499 (8.0)	1,656 (6.7)	2,157 (8.1)	
May	783 (8.1)	816 (8.5)	804 (7.9)	834 (8.8)	959 (8.5)	1,166 (8.6)	1,719 (9.2)	2,330 (9.5)	2,187 (8.2)	
June	954 (9.9)	833 (8.7)	866 (8.5)	953 (10.1)	1,029 (9.1)	1,388 (10.2)	1,691 (9.0)	2,663 (10.9)	2,407 (9.0)	

Notes: 1. Figures in parentheses are percentage to annual import payments of the respective years

2. Due to rounding off separate items, totals may show minor differences

\* General Merchandise/ Merchandise

\*\* The total include figures for July to current month

Table 5: Annual, Quarterly &amp; Monthly Import of Services

(Million US\$)

Period	FY99	FY00	FY01	FY02	FY03	FY04	FY05	FY06	FY07	FY08
Annual	2,124	2,161	2,333	2,194	2,714	3,961	6,612	8,199	8,310	4,687*
Growth (%)	-15.6	1.7	8.0	-6.0	23.7	45.9	66.9	24.0	1.4	
<b><u>Quarter-wise</u></b>										
Quarter-I	520 (24.5)	515 (23.8)	577 (24.7)	586 (26.7)	579 (21.3)	799 (20.2)	1,449 (21.9)	1,953 (23.8)	2,039 (24.5)	2,222
Quarter-II	507 (23.9)	535 (24.8)	564 (24.2)	531 (24.2)	586 (21.6)	945 (23.9)	1,669 (25.2)	2,061 (25.1)	2,193 (26.4)	2,465
Quarter-III	609 (28.7)	585 (27.1)	634 (27.2)	552 (25.2)	649 (23.9)	1,097 (27.7)	1,764 (26.7)	2,061 (25.1)	2,014 (24.2)	
Quarter-IV	488 (23.0)	526 (24.3)	558 (23.9)	525 (23.9)	900 (33.2)	1,120 (28.3)	1,730 (26.2)	2,124 (25.9)	2,064 (24.8)	
<b><u>Month-wise</u></b>										
July	189 (8.9)	157 (7.3)	182 (7.8)	178 (8.1)	181 (6.7)	305 (7.7)	432 (6.5)	573 (7.0)	735 (8.8)	769
August	166 (7.8)	159 (7.4)	183 (7.8)	189 (8.6)	184 (6.8)	207 (5.2)	473 (7.2)	735 (9.0)	619 (7.4)	760
September	165 (7.8)	199 (9.2)	212 (9.1)	219 (10.0)	214 (7.9)	287 (7.2)	544 (8.2)	645 (7.9)	685 (8.2)	693
October	177 (8.3)	146 (6.8)	195 (8.4)	190 (8.7)	189 (7.0)	327 (8.3)	525 (7.9)	626 (7.6)	645 (7.8)	765
November	189 (8.9)	194 (9.0)	204 (8.7)	180 (8.2)	195 (7.2)	238 (6.0)	489 (7.4)	674 (8.2)	782 (9.4)	936
December	141 (6.6)	195 (9.0)	165 (7.1)	161 (7.3)	202 (7.4)	380 (9.6)	655 (9.9)	761 (9.3)	766 (9.2)	764
January	215 (10.1)	190 (8.8)	230 (9.9)	159 (7.2)	248 (9.1)	378 (9.5)	539 (8.2)	672 (8.2)	683 (8.2)	
February	228 (10.7)	202 (9.3)	218 (9.3)	166 (7.6)	185 (6.8)	339 (8.6)	561 (8.5)	622 (7.6)	633 (7.6)	
March	166 (7.8)	193 (8.9)	186 (8.0)	227 (10.3)	216 (8.0)	380 (9.6)	664 (10.0)	767 (9.4)	698 (8.4)	
April	157 (7.4)	153 (7.1)	190 (8.1)	166 (7.6)	331 (12.2)	379 (9.6)	610 (9.2)	617 (7.5)	680 (8.2)	
May	159 (7.5)	155 (7.2)	195 (8.4)	147 (6.7)	276 (10.2)	355 (9.0)	582 (8.8)	744 (9.1)	657 (7.9)	
June	172 (8.1)	218 (10.1)	173 (7.4)	212 (9.7)	293 (10.8)	386 (9.7)	538 (8.1)	763 (9.3)	727 (8.7)	

Notes: 1. Figures in parentheses are percentage to annual import payments of the respective years

2. Due to rounding off separate items, totals may show minor differences

\* The total include figures for July to current month