

S U M M A R Y

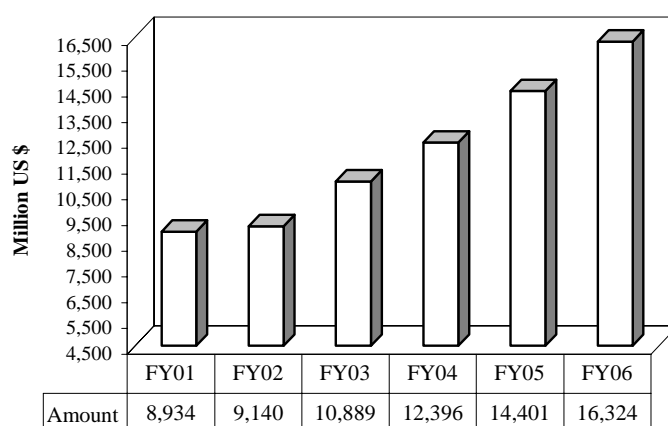
Table 1(a) : Details of Export By Source.		(Amount in Million US \$)		
Items	June		July- June	
	2006	2005	2005-2006	2004-2005
Exports Receipts (Scheduled Banks)	1,430	1,274	15,311	13,993
Less Freight on Export	35	43	488	483
Other Exports Unaccounted by Scheduled Banks	117	138	1,501	890
Land borne Exports *	82	43	982	495
Export of Samples	1	0	3	2
EPZ*	13	0	156	0
Outstanding Export Bills	22	96	362	396
Refund & Rebate	-1	-1	-2	-3
Total Exports	1,512	1,369	16,324	14,401

Note: See page 'v' of Introduction for more details.

* Provisional

		(Amount in million)	
Table 1(b) : Key Indicators of Exports		Pak. Rs.	US \$
June 2006		90,951	1,512
May 2006		89,935	1,497
%Change during June 2006 over May 2006		1.1	1.0
June 2005		81,692	1,369
%Change during June 2006 over June 2005		11.3	10.4
FY06		977,298	16,324
FY05		854,903	14,401
%Change during FY06 over FY05		14.3	13.4
Monthly average during FY06		81,442	1,360
Monthly average during FY05		71,242	1,200

Figure 1: Export for the Period July-June



Note:-From January 2006, the amounts represent the total export used in BOP, computed as per details in table 1(a)

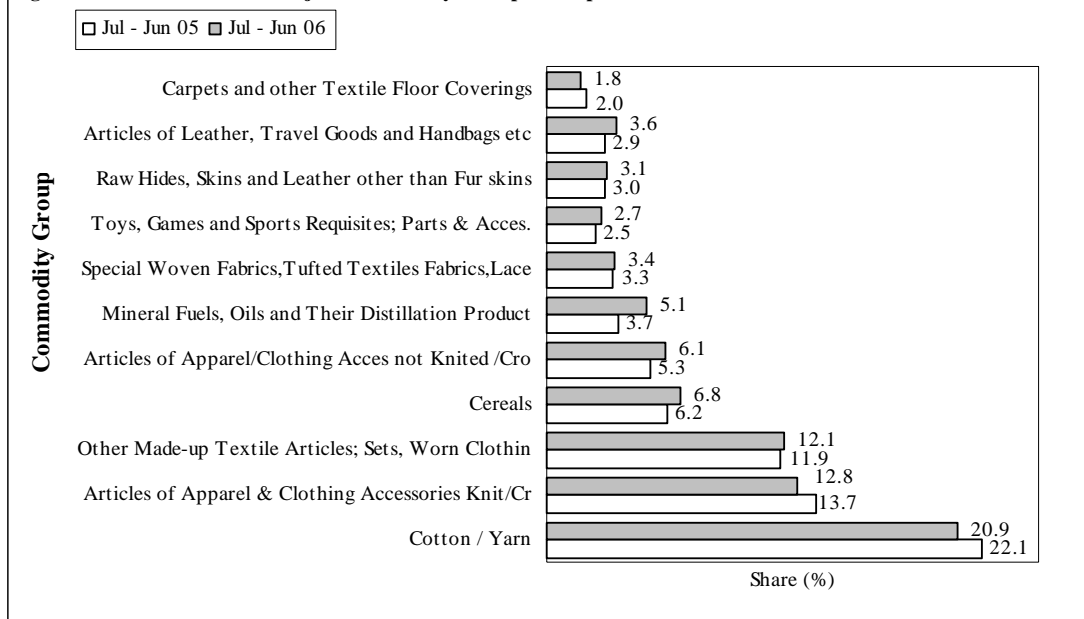
Table 2: Exports by Major Commodity Groups

(Amount in million)

Commodity	June			July- June		
	2006	2006	2005	2005-2006	2004-2005	%
	Pak Rs.	US \$				Change
Cotton / Yarn	18,325	305	278	3,197	3,092	3.4
Articles of Apparel & Clothing Acc Kn/Cr	11,421	190	163	1,954	1,914	2.1
Other Made-up Tex Articles; Sets, Worn Clothing	10,796	179	151	1,848	1,663	11.1
Cereals	6,141	102	69	1,039	863	20.4
Articles of Apparel/Clothing Acc not Kn /Cr	5,595	93	73	929	739	25.7
Mineral Fuels, Oils & Their Distillation Product	4,966	83	50	779	515	51.3
Special Woven Fab, Tufted Tex Fab, Lace	2,913	48	39	526	467	12.6
Toys, Games and Sports Requisites; Parts & Acc.	2,540	42	33	418	349	19.8
Raw Hides, Skins and Leather other Fur skins	2,459	41	36	472	417	13.2
Articles of Leather, Travel Goods & Handbags etc	2,190	36	39	547	412	32.8
Carpets and other Textile Floor Coverings	1,481	25	26	271	279	-2.9
Optical, Photographic, Measuring Medical Inst.	1,388	23	19	216	188	14.9
Plastics and Articles thereof	1,136	19	22	237	257	-7.8
Fish and Crustaceans	1,031	17	13	163	137	19.0
Man-Made Filaments	1,009	17	21	209	247	-15.4
Man-Made Staple Fibers	840	14	24	196	244	-19.7
Organic Chemicals	665	11	4	112	68	64.7
Salt, Sulfur, Earth's and Stones, Lime Stone	657	11	8	123	87	41.4
All Others	10,501	174	206	2,075	2,055	1.0
Total Exports Receipts (Scheduled Banks)	86,054	1,430	1,274	15,311	13,993	9.4
Less Freight on Export	2,118	35	43	488	483	1.0
Other Exports Unaccounted by Scheduled Banks	7,015	117	138	1,501	890	68.7
Land borne Exports *	4,921	82	43	982	495	98.4
Export of Samples	30	1	0	3	2	50
EPZ	782	13	0	156	0	--
Outstanding Export Bills	1,366	22	96	362	396	-8.6
Refund & Rebate	-84	-1	-1	-2	-3	-33.3
Total Exports	90,951	1,512	1,369	16,324	14,401	13.4

Kn: Knitted, Cr: Crocheted, Acc: Accessories, Tex: Textile, Fab: Fabrics

Figure 2: Percent Share of Major Commodity Groups in Export



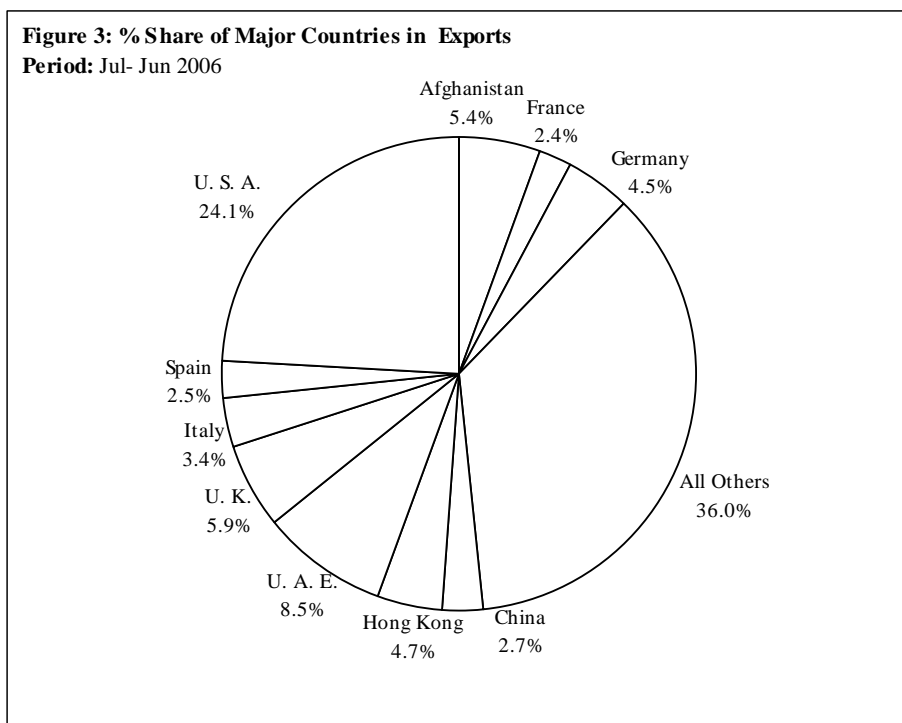
Note: - The share is based on the share of commodities in export receipts (banks) only

Table 3: Exports by Major Countries

(Amount in million)

Country	June			July - June		
	2006	2006	2005	2005-2006	2004-2005	%
	Pak Rs.			US \$		Change
U. S. A.	21,629	360	298	3,687	3,154	16.9
U. A. E.	6,367	106	94	1,298	1,100	18.0
U. K.	5,489	91	81	899	1,035	-13.1
Hong Kong	4,708	78	68	719	649	10.8
Afghanistan	3,914	65	64	832	732	13.7
Germany	3,524	59	60	682	665	2.6
Italy	3,102	52	54	521	539	-3.3
China	2,819	47	35	412	282	46.1
Spain	2,019	34	26	379	323	17.3
France	1,953	32	36	365	400	-8.8
Netherlands (Holland)	1,857	31	23	318	281	13.2
South Africa	1,620	27	15	259	166	56.0
Saudi Arabia	1,566	26	39	322	359	-10.3
Belgium	1,435	24	25	270	291	-7.2
Turkey	1,430	24	28	289	232	24.6
All Others	22,622	374	328	4,059	3,785	7.2
Total Exports Receipts (Scheduled Banks)	86,055	1,430	1,274	15,311	13,993	9.4
Less Freight on Export	2,118	35	43	488	483	1.0
Other Exports Unaccounted by Schedule Banks	7,015	117	138	1,501	890	68.7
Land borne Exports *	4,921	82	43	982	495	98.4
Export of Samples	30	1	0	3	2	50
EPZ*	782	13	0	156	0	--
Outstanding Export Bills	1,366	22	96	362	396	-8.6
Refund & Rebate	-84	-1	-1	-2	-3	-33.3
Total Exports	90,953	1,512	1,369	16,324	14,401	13.4

* Provisional



Note: - The share is based on the share of different countries in export receipts (banks)

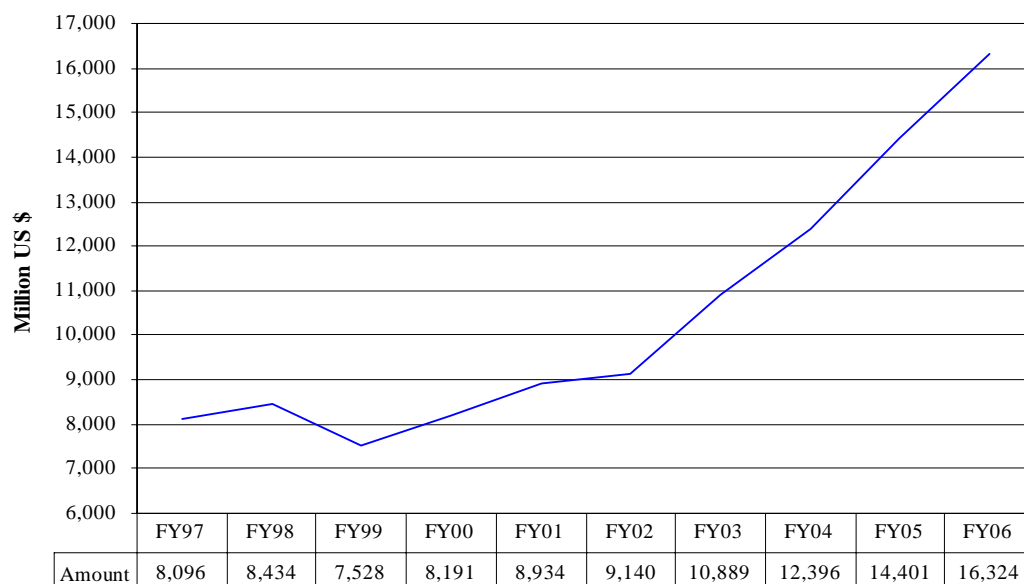
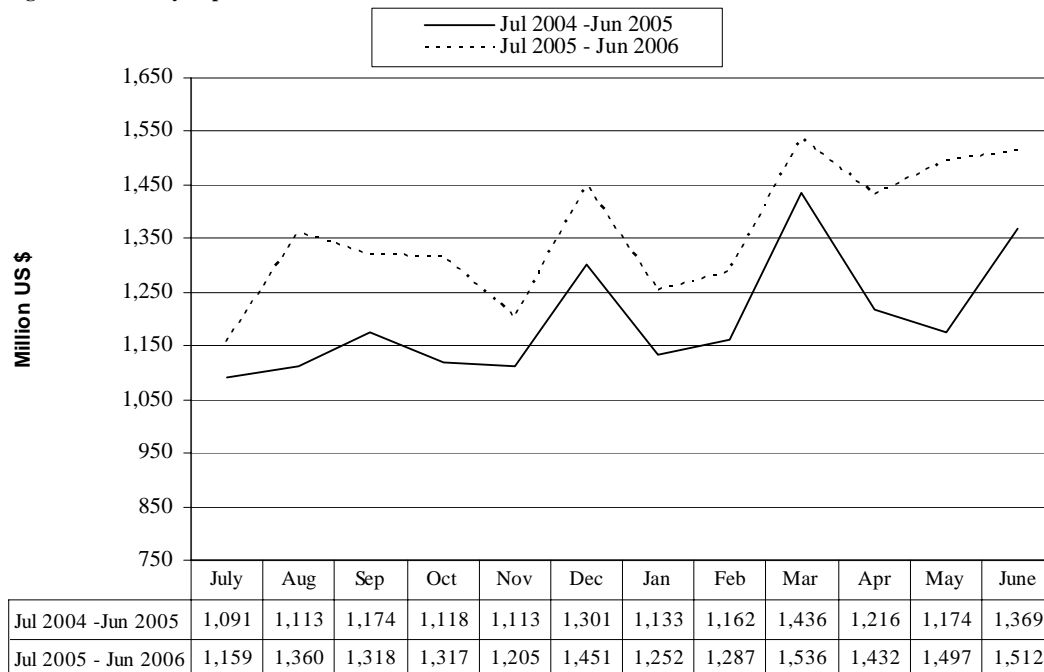
Figure 4: Annual Exports from FY97 to FY06**Figure 5: Monthly Exports from Jul 04 - Jun 05 & Jul 05- Jun 06**

Table 4: Annual, Quarterly & Monthly Export Series

(Million Rs)

Period	1996-97	1997-98	1998-99	1999-00	2000-01	2001-02	2002-03	2003-04	2004-05	2005-06
Annual	316,250	364,486	352,675	424,195	523,225	561,295	636,597	714,123	854,903	977,298
Growth (%)	13.0	15.3	-3.2	20.3	23.3	7.3	13.4	12.2	19.7	14.3
Quarter-wise										
Quarter-I	66,924 (21.2)	83,178 (22.8)	85,631 (24.3)	92,883 (21.9)	115,827 (22.1)	141,253 (25.2)	156,083 (24.5)	174,152 (24.4)	198,246 (23.2)	228,971 (23.4)
Quarter-II	85,102 (26.9)	94,555 (25.9)	81,900 (23.2)	102,384 (24.1)	126,351 (24.1)	142,263 (25.3)	149,647 (23.5)	175,864 (24.6)	211,304 (24.7)	237,374 (24.3)
Quarter-III	80,079 (25.3)	91,881 (25.2)	89,832 (25.5)	103,314 (24.4)	134,933 (25.8)	128,550 (22.9)	151,266 (23.8)	178,302 (25.0)	221,537 (25.9)	244,152 (25.0)
Quarter-IV	84,146 (26.6)	94,872 (26.0)	95,311 (27.0)	125,615 (29.6)	146,115 (27.9)	149,229 (26.6)	179,601 (28.2)	185,806 (26.0)	223,815 (26.2)	266,801 (27.3)
Month-wise										
July	19,511 (6.2)	28,583 (7.8)	27,342 (7.8)	31,325 (7.4)	34,340 (6.6)	43,261 (7.7)	47,534 (7.5)	57,108 (8.0)	63,574 (7.4)	69,100 (7.1)
August	22,590 (7.1)	27,582 (7.6)	29,191 (8.3)	30,107 (7.1)	40,810 (7.8)	50,074 (8.9)	53,262 (8.4)	54,378 (7.6)	65,433 (7.7)	81,114 (8.3)
September	24,822 (7.8)	27,013 (7.4)	29,099 (8.3)	31,451 (7.4)	40,677 (7.8)	47,918 (8.5)	55,288 (8.7)	62,665 (8.8)	69,239 (8.1)	78,757 (8.1)
October	29,880 (9.4)	31,583 (8.7)	28,960 (8.2)	32,087 (7.6)	44,085 (8.4)	53,625 (9.6)	49,900 (7.8)	59,345 (8.3)	67,132 (7.9)	78,619 (8.0)
November	25,057 (7.9)	30,382 (8.3)	26,147 (7.4)	32,457 (7.7)	41,498 (7.9)	48,350 (8.6)	51,203 (8.0)	50,741 (7.1)	66,686 (7.8)	72,004 (7.4)
December	30,165 (9.5)	32,590 (8.9)	26,793 (7.6)	37,840 (8.9)	40,768 (7.8)	40,288 (7.2)	48,544 (7.6)	65,778 (9.2)	77,486 (9.1)	86,750 (8.9)
January	24,615 (7.8)	27,600 (7.6)	29,052 (8.2)	31,942 (7.5)	45,834 (8.8)	43,766 (7.8)	51,957 (8.2)	64,804 (9.1)	67,328 (7.9)	74,914 (7.7)
February	25,821 (8.2)	31,619 (8.7)	29,883 (8.5)	35,584 (8.4)	43,344 (8.3)	40,428 (7.2)	49,485 (7.8)	51,223 (7.2)	68,987 (8.1)	77,067 (7.9)
March	29,642 (9.4)	32,662 (9.0)	30,897 (8.8)	35,788 (8.4)	45,755 (8.7)	44,355 (7.9)	49,824 (7.8)	62,275 (8.7)	85,222 (10.0)	92,171 (9.4)
April	28,340 (9.0)	32,775 (9.0)	29,283 (8.3)	33,405 (7.9)	45,007 (8.6)	49,481 (8.8)	56,736 (8.9)	63,955 (9.0)	72,245 (8.5)	85,915 (8.8)
May	28,228 (8.9)	29,588 (8.1)	28,751 (8.2)	35,740 (8.4)	48,041 (9.2)	47,198 (8.4)	59,348 (9.3)	56,637 (7.9)	69,878 (8.2)	89,935 (9.2)
June	27,577 (8.7)	32,509 (8.9)	37,277 (10.6)	56,469 (13.3)	53,067 (10.1)	52,549 (9.4)	63,517 (10.0)	65,214 (9.1)	81,692 (9.6)	90,951 (9.3)

Notes: 1. Figures in parentheses are percentage to annual export receipts of the respective years
2. Due to rounding off separate items, totals may show minor differences
3. From January 2006, the series is based on total exports used in the compilation of BOP

Table 5: Annual, Quarterly & Monthly Export Series

(Million US\$)

Period	1996-97	1997-98	1998-99	1999-00	2000-01	2001-02	2002-03	2003-04	2004-05	2005-06
Annual	8,096	8,434	7,528	8,191	8,934	9,140	10,889	12,396	14,401	16,324
Growth (%)	-2.6	4.2	-10.7	8.8	9.1	2.3	19.1	13.8	16.2	13.4
Quarter-wise										
Quarter-I	1,866 (23.0)	2,048 (24.3)	1,855 (24.6)	1,798 (22.0)	2,135 (23.9)	2,203 (24.1)	2,623 (24.1)	3,014 (24.3)	3,378 (23.5)	3,837 (23.5)
Quarter-II	2,156 (26.6)	2,167 (25.7)	1,776 (23.6)	1,978 (24.1)	2,189 (24.5)	2,318 (25.4)	2,550 (23.4)	3,055 (24.6)	3,532 (24.5)	3,972 (24.3)
Quarter-III	1,991 (24.6)	2,080 (24.7)	1,948 (25.9)	1,995 (24.4)	2,259 (25.3)	2,137 (23.4)	2,606 (23.9)	3,106 (25.1)	3,731 (25.9)	4,075 (25.0)
Quarter-IV	2,083 (25.7)	2,139 (25.4)	1,949 (25.9)	2,420 (29.5)	2,351 (26.3)	2,482 (27.2)	3,110 (28.6)	3,221 (26.0)	3,760 (26.1)	4,441 (27.2)
Month-wise										
July	553 (6.8)	704 (8.3)	591 (7.9)	607 (7.4)	654 (7.3)	675 (7.4)	795 (7.3)	989 (8.0)	1,091 (7.6)	1,159 (7.1)
August	635 (7.8)	679 (8.1)	633 (8.4)	583 (7.1)	756 (8.5)	781 (8.5)	895 (8.2)	941 (7.6)	1,113 (7.7)	1,360 (8.3)
September	678 (8.4)	665 (7.9)	631 (8.4)	608 (7.4)	725 (8.1)	747 (8.2)	933 (8.6)	1,084 (8.7)	1,174 (8.2)	1,318 (8.1)
October	783 (9.7)	741 (8.8)	628 (8.3)	620 (7.6)	758 (8.5)	862 (9.4)	845 (7.8)	1,031 (8.3)	1,118 (7.8)	1,317 (8.1)
November	623 (7.7)	688 (8.2)	567 (7.5)	627 (7.7)	728 (8.1)	791 (8.7)	874 (8.0)	885 (7.1)	1,113 (7.7)	1,205 (7.4)
December	750 (9.3)	738 (8.8)	581 (7.7)	731 (8.9)	703 (7.9)	665 (7.3)	831 (7.6)	1,139 (9.2)	1,301 (9.0)	1,451 (8.9)
January	612 (7.6)	625 (7.4)	630 (8.4)	617 (7.5)	776 (8.7)	727 (8.0)	893 (8.2)	1,129 (9.1)	1,133 (7.9)	1,252 (7.7)
February	642 (7.9)	716 (8.5)	648 (8.6)	687 (8.4)	727 (8.1)	672 (7.4)	852 (7.8)	893 (7.2)	1,162 (8.1)	1,287 (7.9)
March	737 (9.1)	739 (8.8)	670 (8.9)	691 (8.4)	756 (8.5)	738 (8.1)	861 (7.9)	1,084 (8.7)	1,436 (10.0)	1,536 (9.4)
April	704 (8.7)	740 (8.8)	635 (8.4)	645 (7.9)	737 (8.2)	823 (9.0)	982 (9.0)	1,113 (9.0)	1,216 (8.4)	1,432 (8.8)
May	698 (8.6)	670 (7.9)	593 (7.9)	690 (8.4)	777 (8.7)	785 (8.6)	1,028 (9.4)	982 (7.9)	1,174 (8.2)	1,497 (9.2)
June	681 (8.4)	729 (8.6)	721 (9.6)	1,085 (13.2)	837 (9.4)	874 (9.6)	1,100 (10.1)	1,126 (9.1)	1,369 (9.5)	1,512 (9.3)

Notes: 1. Figures in parentheses are percentage to annual export receipts of the respective years

2. Due to rounding off separate items, totals may show minor differences

3. From January 2006, the series is based on total exports used in the compilation of BOP