

SUMMARY

(Amount in million)

Table 1: Key Indicators of Export Receipts	Pak Rs.	US \$
March 2005	78,848	1,328
February 2005	65,652	1,106
%Change during March 2005 over February 2005	20.1	20.1
March 2004	61,233	1,066
%Change during March 2005 over March 2004	28.8	24.6
July 2004 – March 2005	614,714	10,365
July 2003 – March 2004	509,498	8,855
%Change during July 2004 – March 2005 over July 2003 – March 2004	20.7	17.1
Monthly average during July 2004 – March 2005	68,302	1,152
Monthly average during July 2003 – March 2004	56,611	984
FY04	691,827	12,015
FY03	628,655	10,750
%Change during FY04 over FY03	10.0	11.8
Monthly average during FY04	57,652	1,001
Monthly average during FY03	52,388	896

Figure 1: Export Receipts

Period: July- March

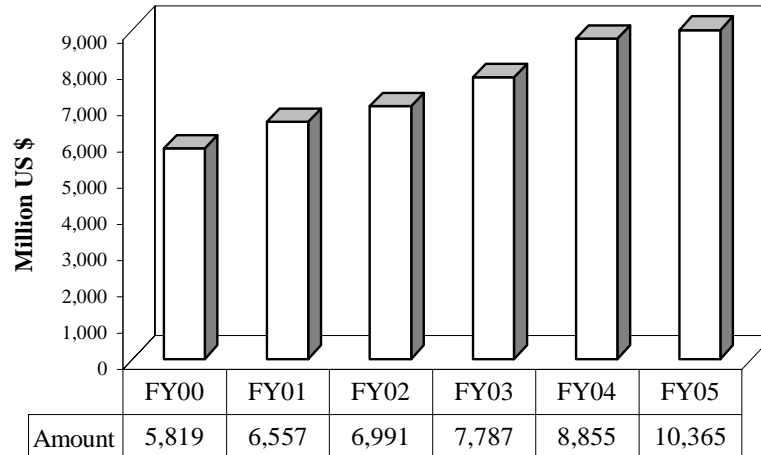


Table 2: Export Receipts by Major Commodity Groups

(Amount in million)

Commodity	March			July- March		
	2005	2005	2004	2004-2005	2003-2004	%
	Rs			US \$		Change
Cotton / Yarn	17,543	296	263	2,293	1,912	20.0
Articles of Apparel & Clothing Acc Kn / Cr	10,688	180	148	1,457	1,260	15.6
Other Made-up Textile Articles; Sets	8,728	147	117	1,244	1,169	6.4
Cereals including rice	6,290	106	60	608	441	37.9
Articles of Apparel/Clothing Acc not Kn / Cr	3,511	59	53	546	514	6.3
Mineral Fuels, Oils and Their Distillation Product	2,688	45	27	375	135	176.6
Special Woven Fab. Tufted Tex. Lace	2,381	40	27	349	285	22.7
Raw Hides, Skins and Leather other than Fur skin	2,072	35	35	313	287	9.3
Articles of Leather, Travel Goods etc	1,971	33	29	305	286	6.7
Toys, Games and Sports Requisites	1,782	30	31	255	237	7.8
Carpets and other Textile Floor Coverings	1,721	29	2	207	170	21.7
Plastics and Articles thereof	1,649	28	12	181	117	55.6
Arms and Ammunition; Parts and Acc thereof	1,329	22	1	76	4	1,640.7
Man-Made Staple Fibers	1,194	20	19	184	153	20.5
Man-Made Filaments	1,178	20	26	195	217	-10.0
Optical, Photographic, Measuring and Med. Inst	1,058	18	15	139	126	9.9
Footwear, Gaiters & the Like; Parts	829	14	6	76	59	28.9
Organic Chemicals	779	13	1	44	34	30.4
All Others	11,459	193	192	1,518	1,451	4.6
Total	78,848	1,328	1,066	10,365	8,855	17.1

Kn: Knitted, Cr: Crocheted, Acc: Accessories, Tex: Textile, Fab: Fabrics

Figure 2: Percent Share of Major Commodity Groups in Export Receipts

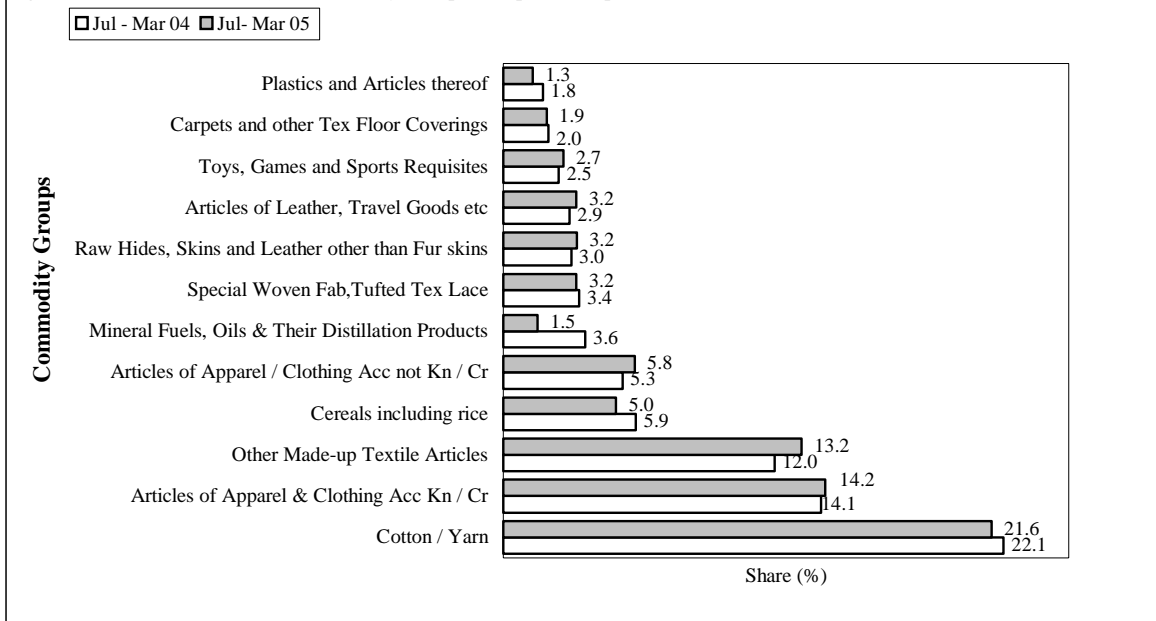


Table 3: Export Receipts by Major Countries (Amount in million)

Country	March			July - March		
	2005	2005	2004	2004-2005	2003-2004	% Change
	Pak Rs			US \$		
U. S. A.	17,000	286	237	2,325	2,021	15.0
U. A. E.	6,895	116	86	853	863	-1.2
U. K.	5,037	85	72	806	644	25.2
Afghanistan	4,624	78	48	500	272	84.2
Hong Kong	3,351	56	64	485	453	7.2
Germany	3,305	56	55	498	469	6.2
Italy	2,654	45	34	388	306	26.8
France	2,210	37	31	310	260	19.3
Saudi Arabia	2,050	35	27	269	301	-10.5
Spain	1,656	28	21	243	212	14.7
Belgium	1,637	28	21	216	181	19.5
Netherlands	1,548	26	29	209	203	2.7
Turkey	1,365	23	23	161	155	3.9
China	1,349	23	25	191	175	9.4
All Others	24,167	406	293	2,911	2,340	24.4
Total	78,848	1,328	1,066	10,365	8,855	17.1

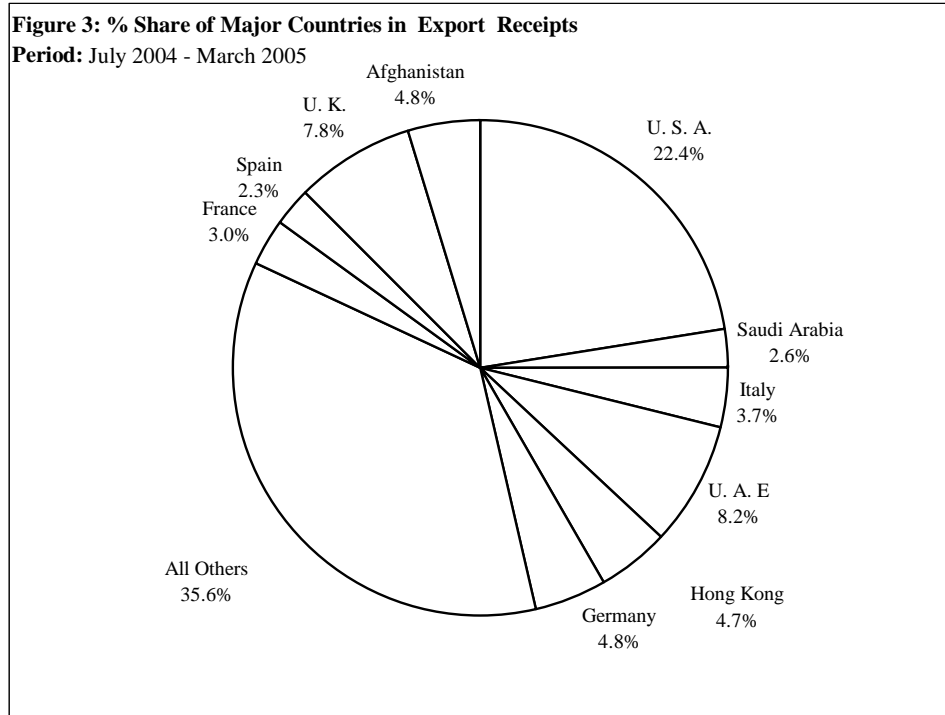


Figure 4: Yearly Export Receipts

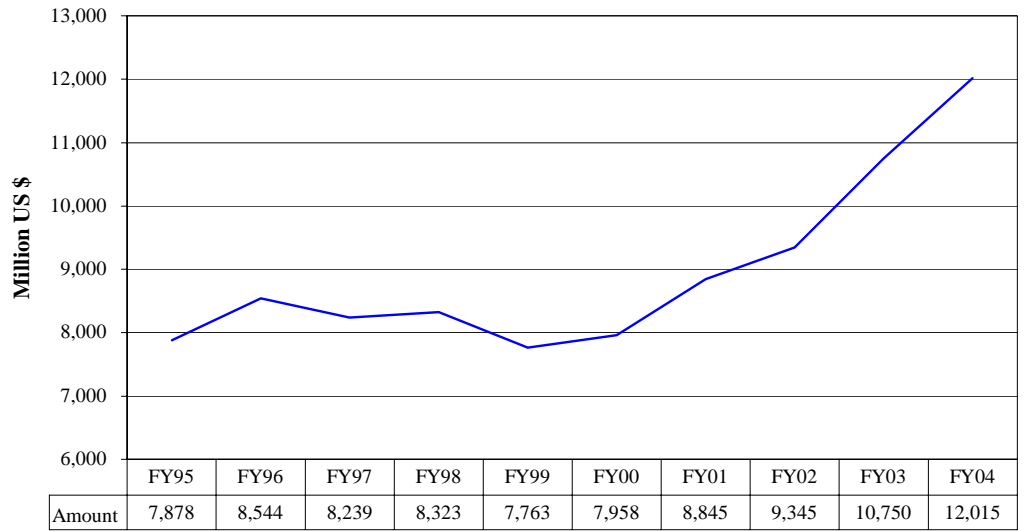


Figure 5: Monthly Export Receipts

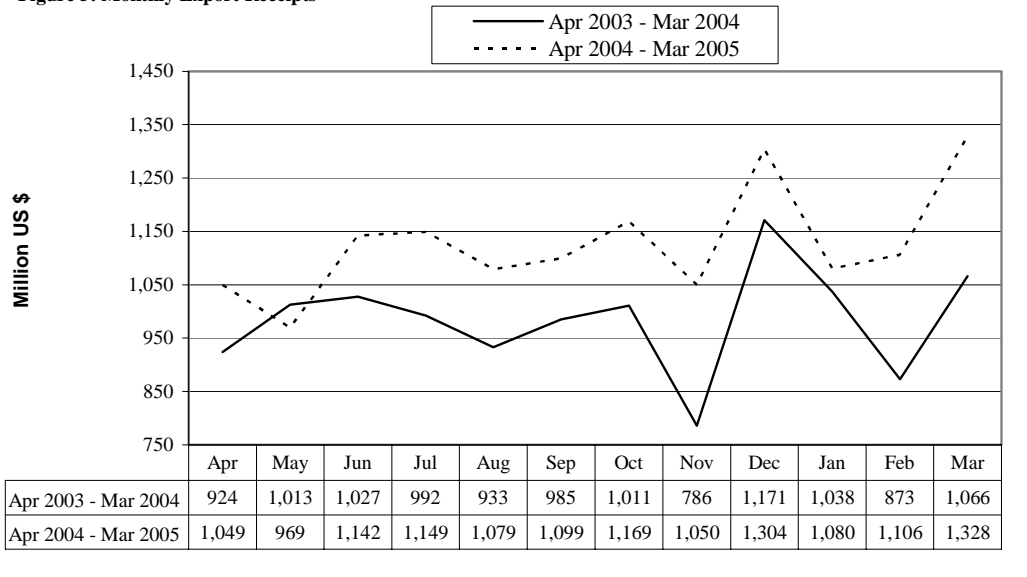


Table 4: Export Receipts Series

(Million Rs)

Period	1995-96	1996-97	1997-98	1998-99	1999-00	2000-01	2001-02	2002-03	2003-04	2004-05
Annual	287,181.1	321,610.8	359,261.5	389,019.2	412,082.1	517,495.6	573,987.2	628,655.3	691,827.5	
Growth (%)	18.1	12.0	11.7	8.3	5.9	25.6	10.9	9.5	10.0	
Quarter-wise										
Quarter-I	63,324.7 (22.1)	70,512.1 (21.9)	85,907.9 (23.9)	92,523.2 (23.8)	92,763.8 (22.5)	118,869.7 (23.0)	144,370.5 (25.2)	157,696.1 (25.1)	168,165.9 (24.3)	195,257.1
Quarter-II	70,934.6 (24.7)	81,271.5 (25.3)	91,938.5 (25.6)	94,906.2 (24.4)	98,966.7 (24.0)	119,704.7 (23.1)	150,425.4 (26.2)	147,405.4 (23.4)	170,451.2 (24.6)	210,762.3
Quarter-III	77,922.1 (27.1)	83,132.8 (25.8)	91,762.1 (25.5)	101,948.1 (26.2)	109,361.2 (26.5)	136,849.1 (26.4)	137,656.1 (24.0)	152,416.7 (24.2)	170,881.2 (24.7)	208,694.2
Quarter-IV	74,999.8 (26.1)	86,694.2 (27.0)	89,653.0 (25.0)	99,641.7 (25.6)	110,990.4 (26.9)	142,072.1 (27.5)	141,535.2 (24.7)	171,137.2 (27.2)	182,329.2 (26.4)	
Month-wise										
July	21,907.2 (7.6)	23,884.4 (7.4)	29,859.6 (8.3)	30,114.1 (7.7)	32,118.9 (7.8)	36,566.6 (7.1)	46,206.5 (8.1)	54,731.1 (8.7)	57,308.1 (8.3)	66,983.6
August	22,441.0 (7.8)	22,410.5 (7.0)	28,053.3 (7.8)	30,789.3 (7.9)	28,909.1 (7.0)	41,241.3 (8.0)	51,444.5 (9.0)	52,468.8 (8.3)	53,894.1 (7.8)	63,440.2
September	18,976.5 (6.6)	24,217.2 (7.5)	27,995.0 (7.8)	31,619.8 (8.1)	31,735.8 (7.7)	41,061.8 (7.9)	46,719.5 (8.1)	50,496.2 (8.0)	56,963.7 (8.2)	64,833.3
October	22,347.2 (7.8)	27,890.8 (8.7)	33,014.4 (9.2)	32,445.0 (8.3)	31,735.8 (7.7)	39,986.2 (7.7)	57,750.7 (10.1)	50,772.7 (8.1)	58,193.6 (8.4)	70,199.6
November	23,749.5 (8.3)	25,545.2 (7.9)	28,551.8 (7.9)	30,154.9 (7.8)	31,941.1 (7.8)	38,842.6 (7.5)	48,957.5 (8.5)	49,925.9 (7.9)	45,059.3 (6.5)	62,910.2
December	24,837.9 (8.6)	28,135.5 (8.7)	30,372.3 (8.5)	32,306.2 (8.3)	35,289.7 (8.6)	40,875.9 (7.9)	43,717.3 (7.6)	46,706.8 (7.4)	67,198.3 (9.7)	77,652.5
January	27,000.0 (9.4)	25,433.7 (7.9)	28,095.3 (7.8)	33,520.1 (8.6)	35,796.5 (8.7)	48,728.2 (9.4)	47,703 (8.3)	54,668.6 (8.7)	59,554.7 (8.6)	64,194.9
February	23,466.1 (8.2)	26,727.5 (8.3)	31,554.7 (8.8)	33,477.2 (8.6)	34,895.6 (8.5)	41,297.8 (8.0)	44,534.4 (7.8)	46,788.2 (7.4)	50,093.8 (7.2)	65,651.6
March	27,456.0 (9.6)	30,971.6 (9.6)	32,112.1 (8.9)	34,950.8 (9.0)	38,669.1 (9.4)	46,823.1 (9.0)	45,418.7 (7.9)	50,959.9 (8.1)	61,232.8 (8.9)	78,847.8
April	24,201.8 (8.4)	29,725.5 (9.2)	31,557.4 (8.8)	36,146.0 (9.3)	33,202.6 (8.1)	44,794.7 (8.7)	45,944.7 (8.0)	53,358.9 (8.5)	60,284.2 (8.7)	
May	25,337.6 (8.8)	28,658.7 (8.9)	28,788.7 (8.0)	31,055.4 (8.0)	35,401.3 (8.6)	48,124.0 (9.3)	46,348 (8.1)	58,454.1 (9.3)	55,895.0 (8.1)	
June	25,460.4 (8.9)	28,310.0 (8.8)	29,306.9 (8.2)	32,440.3 (8.3)	42,386.5 (10.3)	49,153.3 (9.5)	49,242.5 (8.6)	59,324.1 (9.4)	66,149.9 (9.6)	

Notes: 1. Figures in parentheses are percentage to annual export receipts of the respective years

2. Due to rounding off separate items, totals may show minor differences

Table 5: Export Receipts Series

(Million US\$)

Period	1995-96	1996-97	1997-98	1998-99	1999-00	2000-01	2001-02	2002-03	2003-04	2004-05
Annual	8,543.9	8,239.1	8,323.1	7,762.8	7,958.4	8,844.5	9,344.9	10,750.0	12,015.3	
Growth (%)	8.5	-3.6	1.0	-6.7	2.5	11.1	5.7	15.0	11.8	
<u>Quarter-wise</u>										
Quarter-I	2,019.9 (23.7)	1,967.9 (23.9)	2,115.2 (25.4)	1,887.4 (24.3)	1,795.7 (22.6)	2,192.2 (24.8)	2,251.6 (24.1)	2,649.2 (24.6)	2,910.5 (24.2)	3,327.8
Quarter-II	2,111.1 (24.7)	2,058.1 (25.0)	2,109.0 (25.3)	1,883.1 (24.3)	1,912.0 (24.0)	2,073.9 (23.5)	2,450.9 (26.2)	2,511.5 (23.4)	2,967.7 (24.7)	3,523.0
Quarter-III	2,262.0 (26.5)	2,066.9 (25.1)	2,077.3 (25.0)	2,039.9 (26.3)	2,111.8 (26.5)	2,291.3 (25.9)	2,288.4 (24.5)	2,625.8 (24.4)	2,976.7 (24.8)	3,514.4
Quarter-IV	2,150.9 (25.2)	2,146.1 (26.1)	2,021.6 (24.3)	1,952.4 (25.2)	2,138.9 (26.9)	2,287.1 (25.9)	2,354.1 (25.2)	2,963.4 (27.6)	3,160.4 (26.3)	
<u>Month-wise</u>										
July	702.1 (8.2)	676.5 (8.2)	735.4 (8.8)	639.6 (8.2)	622.4 (7.8)	696.4 (7.9)	721.0 (7.7)	915.4 (8.5)	992.5 (8.3)	1,149.4
August	715.7 (8.4)	629.9 (7.7)	690.6 (8.3)	616.7 (7.9)	559.8 (7.0)	764.0 (8.6)	802.4 (8.6)	881.7 (8.2)	932.6 (7.8)	1,079.0
September	602.1 (7.1)	661.5 (8.0)	689.2 (8.3)	631.1 (8.1)	613.5 (7.7)	731.9 (8.3)	728.3 (7.8)	852.1 (7.9)	985.4 (8.2)	1,099.4
October	696.0 (8.2)	730.9 (8.9)	774.6 (9.3)	644.0 (8.3)	613.2 (7.7)	687.5 (7.8)	928.3 (9.9)	859.8 (8.0)	1,011.0 (8.4)	1,169.4
November	691.7 (8.1)	627.7 (7.6)	646.6 (7.8)	593.6 (7.7)	617.0 (7.8)	681.4 (7.7)	800.9 (8.6)	852.2 (7.9)	785.9 (6.5)	1,049.6
December	723.4 (8.5)	699.5 (8.5)	687.8 (8.3)	645.4 (8.3)	681.7 (8.6)	704.9 (8.0)	721.6 (7.7)	799.6 (7.4)	1,170.8 (9.7)	1,304.0
January	786.2 (9.2)	632.4 (7.7)	636.2 (7.6)	672.2 (8.7)	691.4 (8.7)	825.0 (9.3)	792.4 (8.5)	939.6 (8.7)	1,037.6 (8.6)	1,079.9
February	681.5 (8.0)	664.5 (8.1)	714.5 (8.6)	667.9 (8.6)	673.7 (8.5)	692.7 (7.8)	740.3 (7.9)	805.6 (7.5)	873.3 (7.3)	1,106.1
March	794.3 (9.3)	770.1 (9.4)	726.6 (8.6)	699.9 (9.0)	746.6 (9.4)	773.6 (8.8)	755.7 (8.1)	880.6 (8.2)	1,065.9 (8.9)	1,328.4
April	697.5 (8.2)	738.4 (9.0)	712.5 (8.6)	717.0 (9.2)	641.1 (8.1)	733.5 (8.3)	764.2 (8.2)	923.5 (8.6)	1,049.1 (8.7)	
May	727.1 (8.5)	708.6 (8.6)	651.9 (7.8)	607.8 (7.8)	683.5 (8.6)	778.3 (8.8)	770.9 (8.3)	1,012.5 (9.4)	969.1 (8.1)	
June	726.3 (8.5)	699.1 (8.5)	657.2 (7.9)	627.5 (8.1)	814.4 (10.2)	775.3 (8.8)	819.0 (8.8)	1,027.4 (9.6)	1,142.2 (9.5)	

Notes: 1. Figures in parentheses are percentage to annual export receipts of the respective years

2. Due to rounding off separate items, totals may show minor differences