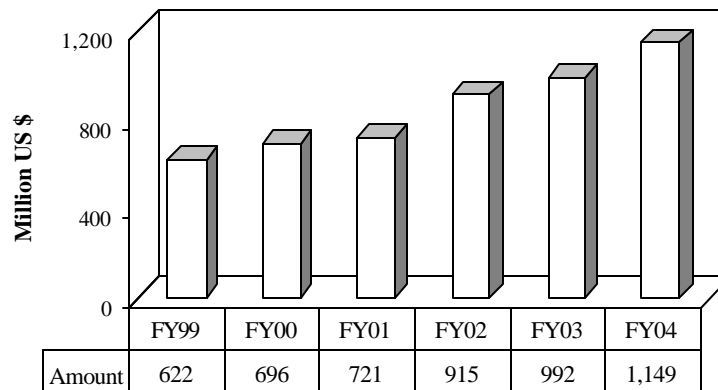


SUMMARY

(Amount in million)

Table 1: Key Indicators of Export Receipts	Pak. Rs.	US \$
July 2004	66,984	1,149
June 2004	66,150	1,142
%Change during July 2004 over June 2004	1.3	0.6
July 2003	57,308	992
%Change during July 2004 over July 2003	16.9	15.8
FY04	691,827	12,015
FY03	628,655	10,750
%Change during FY04 over FY03	10.0	11.8
Monthly average during FY04	57,652	1,001
Monthly average during FY03	52,388	896

Figure 1: Export Receipts
Period: July



Commodity	July			% Change
	2004	2004	2003	
	Pak Rs.	US \$		
Cotton	14,572	250	201	24.4
Articles of Apparel & Clothing Accessories Kn / Cr	10,535	181	140	29.3
Other Made-up Textile Articles, Sets etc	7,189	123	167	-26.3
Cereals	3,932	67	51	31.4
Articles of Apparel/Clothing Accessories not Kn / Cr	3,694	63	60	5.0
Special Woven Fabrics, Tufted Textiles Fabrics, Lace	2,324	40	34	17.6
Mineral Fuels, Oils and Their Distillation Product	2,276	39	8	387.5
Raw Hides, Skins and Leather other than Fur skins	2,091	36	28	28.6
Toys, Games and Sports Requisites; Parts & Accessories	2,041	35	26	34.6
Articles of Leather, Travel Goods and Handbags etc	1,921	33	25	32.0
Man-Made Filaments	1,437	25	20	25.0
Carpets and other Textile Floor Coverings	1,268	22	16	37.5
Man-Made Staple Fibers	977	17	14	21.4
Optical, Photographic, Measuring and Medical Inst.	883	15	13	15.4
Nuclear Reactors, Boilers, Machinery and Appliance	834	14	7	100
Sugars and Sugar Confectionery	707	12	7	71.4
Edible Fruits and Nuts	606	10	9	11.1
Plastics and Articles thereof	602	10	14	-28.6
Other	9,095	157	152	3.3
Total	66,984	1,149	992	15.8

Figure 2: Percent Share of Major Commodity Groups in Export Receipts

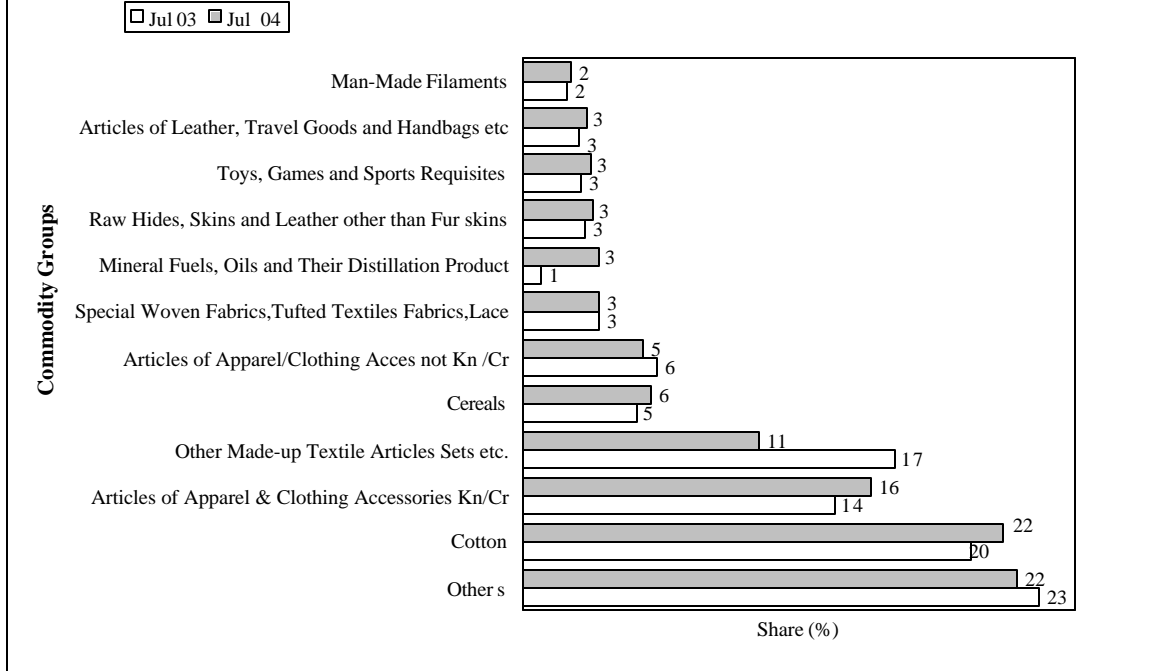


Table 2: Export Receipts by Major Countries				(Amount in million)	
Country	July			% Change	
	2004	2004	2003		
	Pak Rs.		US \$		
U. S. A.	15,902	273	232	17.7	
U. A. E.	5,565	95	128	-25.8	
U. K.	5,237	90	71	26.8	
Hong Kong	3,771	65	55	18.2	
Germany	2,976	51	56	-8.9	
Afghanistan	2,637	45	23	95.7	
France	2,491	43	34	26.5	
Italy	2,199	38	36	5.6	
Saudi Arabia	1,900	33	29	13.8	
Spain	1,450	25	23	8.7	
Netherlands	1,352	23	22	4.5	
Belgium	1,268	22	17	29.4	
China	1,200	21	21	0.0	
Turkey	1,024	18	14	28.6	
Canada	976	17	16	6.3	
Other	17,036	290	215	34.9	
Total	66,984	1,149	992	15.8	

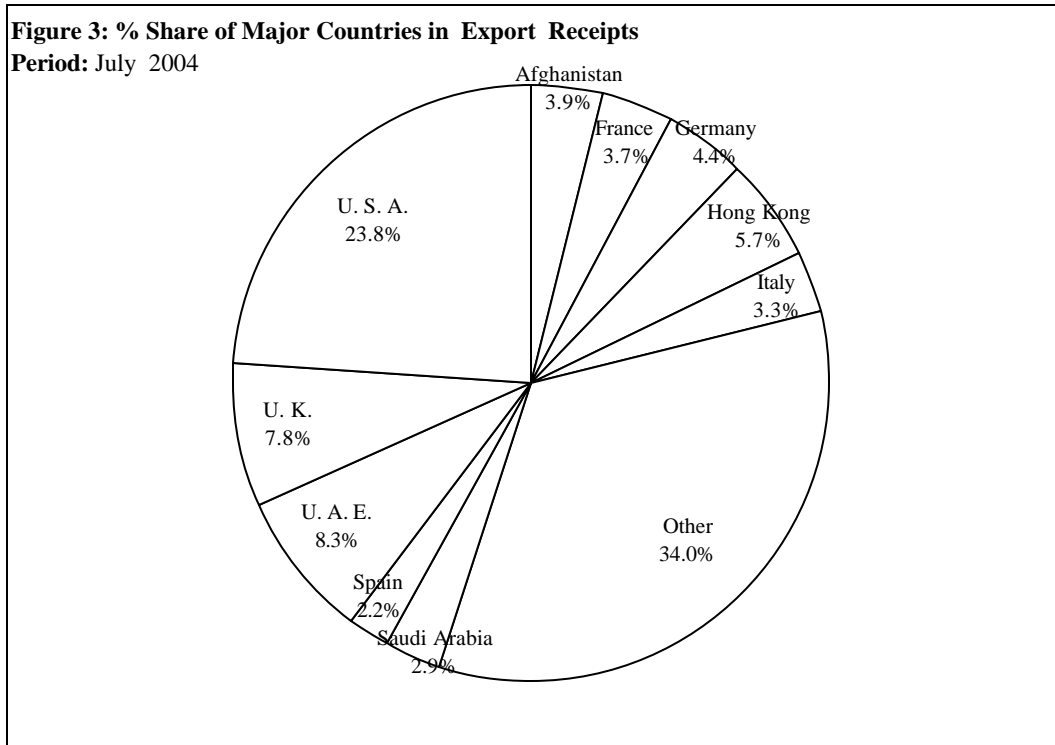


Figure 4: Yearly Export Receipts

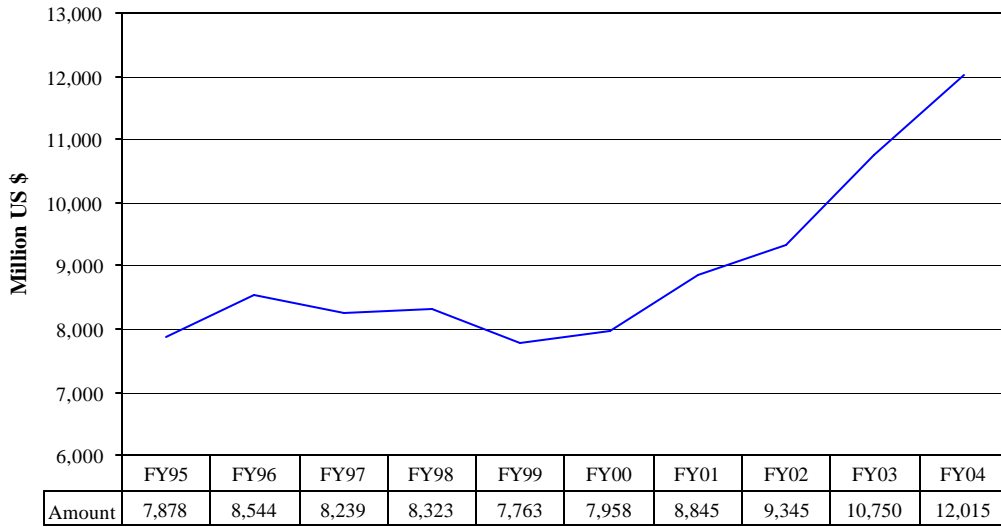


Figure 5: Monthly Export Receipts

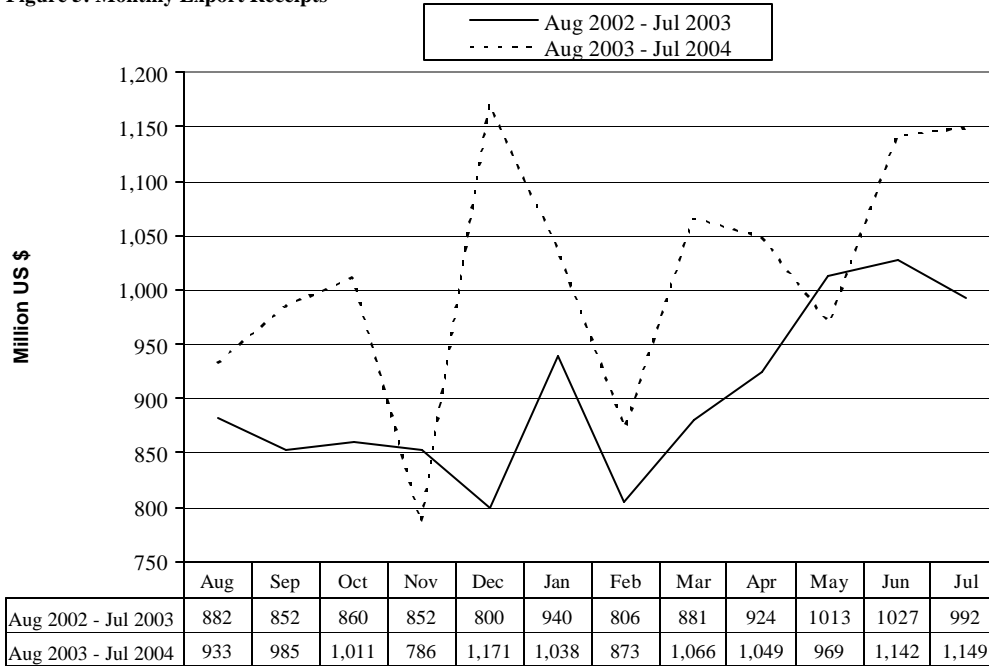


Table 4: Export Receipts Series

(Million Rs)

Period	1995-96	1996-97	1997-98	1998-99	1999-00	2000-01	2001-02	2002-03	2003-04	2004-05
Annual	287,181.1	321,610.8	359,261.5	389,019.2	412,082.1	517,495.6	573,987.2	628,655.3	691,827.5	
Growth (%)	18.1	12.0	11.7	8.3	5.9	25.6	10.9	9.5	10.0	
<u>Quarter-wise</u>										
Quarter-I	63,324.7 (22.1)	70,512.1 (21.9)	85,907.9 (23.9)	92,523.2 (23.8)	92,763.8 (22.5)	118,869.7 (23.0)	144,370.5 (25.2)	157,696.1 (25.1)	168,165.9 (24.3)	
Quarter-II	70,934.6 (24.7)	81,271.5 (25.3)	91,938.5 (25.6)	94,906.2 (24.4)	98,966.7 (24.0)	119,704.7 (23.1)	150,425.4 (26.2)	147,405.4 (23.4)	170,451.2 (24.6)	
Quarter-III	77,922.1 (27.1)	83,132.8 (25.8)	91,762.1 (25.5)	101,948.1 (26.2)	109,361.2 (26.5)	136,849.1 (26.4)	137,656.1 (24.0)	152,416.7 (24.2)	170,881.2 (24.7)	
Quarter-IV	74,999.8 (26.1)	86,694.2 (27.0)	89,653.0 (25.0)	99,641.7 (25.6)	110,990.4 (26.9)	142,072.1 (27.5)	141,535.2 (24.7)	171,137.2 (27.2)	182,329.2 (26.4)	
<u>Month-wise</u>										
July	21,907.2 (7.6)	23,884.4 (7.4)	29,859.6 (8.3)	30,114.1 (7.7)	32,118.9 (7.8)	36,566.6 (7.1)	46,206.5 (8.1)	54,731.1 (8.7)	57,308.1 (8.3)	66,983.6
August	22,441.0 (7.8)	22,410.5 (7.0)	28,053.3 (7.8)	30,789.3 (7.9)	28,909.1 (7.0)	41,241.3 (8.0)	51,444.5 (9.0)	52,468.8 (8.3)	53,894.1 (7.8)	
September	18,976.5 (6.6)	24,217.2 (7.5)	27,995.0 (7.8)	31,619.8 (8.1)	31,735.8 (7.7)	41,061.8 (7.9)	46,719.5 (8.1)	50,496.2 (8.0)	56,963.7 (8.2)	
October	22,347.2 (7.8)	27,890.8 (8.7)	33,014.4 (9.2)	32,445.0 (8.3)	31,735.8 (7.7)	39,986.2 (7.7)	57,750.7 (10.1)	50,772.7 (8.1)	58,193.6 (8.4)	
November	23,749.5 (8.3)	25,545.2 (7.9)	28,551.8 (7.9)	30,154.9 (7.8)	31,941.1 (7.8)	38,842.6 (7.5)	48,957.5 (8.5)	49,925.9 (7.9)	45,059.3 (6.5)	
December	24,837.9 (8.6)	28,135.5 (8.7)	30,372.3 (8.5)	32,306.2 (8.3)	35,289.7 (8.6)	40,875.9 (7.9)	43,717.3 (7.6)	46,706.8 (7.4)	67,198.3 (9.7)	
January	27,000.0 (9.4)	25,433.7 (7.9)	28,095.3 (7.8)	33,520.1 (8.6)	35,796.5 (8.7)	48,728.2 (9.4)	47,703 (8.3)	54,668.6 (8.7)	59,554.7 (8.6)	
February	23,466.1 (8.2)	26,727.5 (8.3)	31,554.7 (8.8)	33,477.2 (8.6)	34,895.6 (8.5)	41,297.8 (8.0)	44,534.4 (7.8)	46,788.2 (7.4)	50,093.8 (7.2)	
March	27,456.0 (9.6)	30,971.6 (9.6)	32,112.1 (8.9)	34,950.8 (9.0)	38,669.1 (9.4)	46,823.1 (9.0)	45,418.7 (7.9)	50,959.9 (8.1)	61,232.8 (8.9)	
April	24,201.8 (8.4)	29,725.5 (9.2)	31,557.4 (8.8)	36,146.0 (9.3)	33,202.6 (8.1)	44,794.7 (8.7)	45,944.7 (8.0)	53,358.9 (8.5)	60,284.2 (8.7)	
May	25,337.6 (8.8)	28,658.7 (8.9)	28,788.7 (8.0)	31,055.4 (8.0)	35,401.3 (8.6)	48,124.0 (9.3)	46,348 (8.1)	58,454.1 (9.3)	55,895.0 (8.1)	
June	25,460.4 (8.9)	28,310.0 (8.8)	29,306.9 (8.2)	32,440.3 (8.3)	42,386.5 (10.3)	49,153.3 (9.5)	49,242.5 (8.6)	59,324.1 (9.4)	66,149.9 (9.6)	

Notes: 1. Figures in parentheses are percentage to annual export receipts of the respective years
2. Due to rounding off separate items, totals may show minor differences

Table 5: Export Receipts Series

(Million US\$)

Period	1995-96	1996-97	1997-98	1998-99	1999-00	2000-01	2001-02	2002-03	2003-04	2004-05
Annual	8,543.9	8,239.1	8,323.1	7,762.8	7,958.4	8,844.5	9,344.9	10,750.0	12,015.3	
Growth (%)	8.5	-3.6	1.0	-6.7	2.5	11.1	5.7	15.0	11.8	
Quarter-wise										
Quarter-I	2,019.9 (23.7)	1,967.9 (23.9)	2,115.2 (25.4)	1,887.4 (24.3)	1,795.7 (22.6)	2,192.2 (24.8)	2,251.6 (24.1)	2,649.2 (24.6)	2,910.5 (24.2)	
Quarter-II	2,111.1 (24.7)	2,058.1 (25.0)	2,109.0 (25.3)	1,883.1 (24.3)	1,912.0 (24.0)	2,073.9 (23.5)	2,450.9 (26.2)	2,511.5 (23.4)	2,967.7 (24.7)	
Quarter-III	2,262.0 (26.5)	2,066.9 (25.1)	2,077.3 (25.0)	2,039.9 (26.3)	2,111.8 (26.5)	2,291.3 (25.9)	2,288.4 (24.5)	2,625.8 (24.4)	2,976.7 (24.8)	
Quarter-IV	2,150.9 (25.2)	2,146.1 (26.1)	2,021.6 (24.3)	1,952.4 (25.2)	2,138.9 (26.9)	2,287.1 (25.9)	2,354.1 (25.2)	2,963.4 (27.6)	3,160.4 (26.3)	
Month-wise										
July	702.1 (8.2)	676.5 (8.2)	735.4 (8.8)	639.6 (8.2)	622.4 (7.8)	696.4 (7.9)	721.0 (7.7)	915.4 (8.5)	992.5 (8.3)	1,149.4
August	715.7 (8.4)	629.9 (7.7)	690.6 (8.3)	616.7 (7.9)	559.8 (7.0)	764.0 (8.6)	802.4 (8.6)	881.7 (8.2)	932.6 (7.8)	
September	602.1 (7.1)	661.5 (8.0)	689.2 (8.3)	631.1 (8.1)	613.5 (7.7)	731.9 (8.3)	728.3 (7.8)	852.1 (7.9)	985.4 (8.2)	
October	696.0 (8.2)	730.9 (8.9)	774.6 (9.3)	644.0 (8.3)	613.2 (7.7)	687.5 (7.8)	928.3 (9.9)	859.8 (8.0)	1,011.0 (8.4)	
November	691.7 (8.1)	627.7 (7.6)	646.6 (7.8)	593.6 (7.7)	617.0 (7.8)	681.4 (7.7)	800.9 (8.6)	852.2 (7.9)	785.9 (6.5)	
December	723.4 (8.5)	699.5 (8.5)	687.8 (8.3)	645.4 (8.3)	681.7 (8.6)	704.9 (8.0)	721.6 (7.7)	799.6 (7.4)	1,170.8 (9.7)	
January	786.2 (9.2)	632.4 (7.7)	636.2 (7.6)	672.2 (8.7)	691.4 (8.7)	825.0 (9.3)	792.4 (8.5)	939.6 (8.7)	1,037.6 (8.6)	
February	681.5 (8.0)	664.5 (8.1)	714.5 (8.6)	667.9 (8.6)	673.7 (8.5)	692.7 (7.8)	740.3 (7.9)	805.6 (7.5)	873.3 (7.3)	
March	794.3 (9.3)	770.1 (9.4)	726.6 (8.6)	699.9 (9.0)	746.6 (9.4)	773.6 (8.8)	755.7 (8.1)	880.6 (8.2)	1,065.9 (8.9)	
April	697.5 (8.2)	738.4 (9.0)	712.5 (8.6)	717.0 (9.2)	641.1 (8.1)	733.5 (8.3)	764.2 (8.2)	923.5 (8.6)	1,049.1 (8.7)	
May	727.1 (8.5)	708.6 (8.6)	651.9 (7.8)	607.8 (7.8)	683.5 (8.6)	778.3 (8.8)	770.9 (8.3)	1,012.5 (9.4)	969.1 (8.1)	
June	726.3 (8.5)	699.1 (8.5)	657.2 (7.9)	627.5 (8.1)	814.4 (10.2)	775.3 (8.8)	819.0 (8.8)	1,027.4 (9.6)	1,142.2 (9.5)	

Notes: 1. Figures in parentheses are percentage to annual export receipts of the respective years

2. Due to rounding off separate items, totals may show minor differences